

Biocomposites from hydrolyzed waste proteinaceous biomass: mechanical, thermal and moisture absorption performances

Cite this: *J. Mater. Chem. A*, 2013, **1**, 13186

Tizazu Mekonnen,^a Paolo Mussone,^a Kirill Alemaskin,^c Lisa Sopkow,^c John Wolodko,^c Phillip Choi^b and David Bressler^{*a}

The main goal of this research is maximizing the utilization of renewable materials in both the matrix and reinforcement, more importantly exploitation of waste material for biocomposite development and evaluating the mechanical, thermal and water resistance performances. Woven roving and chopped strand mat fiber glass, and hemp fiber mats are incorporated to an epoxy resin based matrix cured with novel hydrolyzed specified risk material (SRM) extracts. Aminophenyl sulphone (APS) is used as a control crosslinking agent for the epoxy resin. Results show that the biocomposites developed in this research exhibit promising flexural strength, tensile strength and tensile modulus; despite relatively poor moisture resistance. The use of waste protein hydrolyzate extracts, hydrolyzed proteins, as crosslinking agent of epoxy resins in making biocomposites is novel and promising and results can be extended to other proteinaceous biomasses as curing agent of epoxy resins.

Received 5th September 2013

Accepted 18th September 2013

DOI: 10.1039/c3ta13560h

www.rsc.org/MaterialsA

1. Introduction

Over the past two decades, substantial research efforts have been devoted to developing technologies to incorporate renewable fibers as reinforcing fillers in polymeric composite materials. The use of natural fibers as a mechanical reinforcement material in place of fiberglass for composite materials has many marked advantages. Low cost, low specific density and high specific strength, natural fibers are renewable material and are less energy intensive to produce (grow) than glass fibers.¹ The reduction in fiber density and thus composite density is favorable in certain engineering applications. For instance, biocomposites for automotive parts where vehicle weight and fuel economy are often a concern, lower density is very desirable.² Moreover, glass fibers are abrasive to tooling and can cause irritation and discomfort to personnel during manufacturing.³ Thus, natural fibers such as hemp and flax fibers can potentially compete with E-glass fibers, which serve as a reference because of their great importance in composite technology.⁴

Considerable progress has resulted in a broad range of polymeric matrices reinforced with plant fibers such as hemp,

jute, bamboo, flax and sisal that are now commercially available.^{5,6} During the same period, concerns about the growing environmental footprint and dwindling availability of fossil fuels reserves have driven research and development aimed at developing biodegradable polymeric matrices that could be reinforced with natural fibers. Thermosetting and thermoplastic materials have been synthesized using a broad range of biomass feedstock, from starch⁷ to plant protein⁸ to animal protein.⁹ The growth and commercial success of the global bio-based plastic market, which is expected to reach a total production of approximately 3.5 million metric tons in 2020,¹⁰ remain challenged by biomass processing challenges and by high feedstock costs.

The outbreaks of bovine spongiform encephalopathy (BSE) have resulted in legislations that limited the use of certain cattle tissue known as specified risk material (SRM) as human or animal foodstuffs or fertilizer applications in Canada, the US and European Union.^{11–13} While the fats recovered during the rendering process find a market in the oliochemical industry, large quantities of SRM, mainly composed of protein and ash are either presently incinerated or land filled in regulated facilities in some European Union countries, Canada and the US.¹⁴ The environmental risks posed by such practices and the associated massive costs have inflicted significant economic stress on the rendering industry with profound ramifications to the whole livestock sector. Such waste animal proteins recovered at rendering facilities presently constitute a low-value commodity that can be used as feedstock for the production of a wide array of renewable materials, including plastics.^{9,15–17}

^aBiorefining Conversions and Fermentations Laboratory, University of Alberta, Edmonton, AB T6G 2P5, Canada. E-mail: david.bressler@ales.ualberta.ca; Fax: +1 780-492-4265; Tel: +1 780-492-4986

^bDepartment of Chemical and Materials Engineering, University of Alberta, Edmonton, AB T6G 2V4, Canada

^cAdvanced materials group, Alberta Innovates Technology Futures, Edmonton, AB T6N 1E4, Canada



Our laboratory has recently demonstrated that a thermal hydrolysis protocol for the destruction of BSE prions approved by Canadian Food Inspection Agency (CFIA) and Food and Drug Administration (FDA) of the US can be used as a platform to convert SRM into hydrolyzed protein fragments that can be fractionated for industrial functional utilization.¹⁷ These fragments bear reactive functional groups such as primary and secondary amines, hydroxyls, carbonyls and sulfhydryls associated with the side chain of each amino acid or the end of each main hydrolyzed protein chain.^{9,18} Therefore, the short chain length of the hydrolyzed proteins coupled with the abundant functional group make them a unique crosslinking agent for epoxy resins⁹ replacing petroleum based crosslinking agents such as diamines to constitute the matrix of biocomposites. As such, the reported toxicity and contact dermatitis^{19,20} resulting from the residual amines used as hardeners of epoxy resins could be eliminated. Other renewable epoxy co-reactant crosslinkers such as dimerized fatty acids (*e.g.* pripol 1008, 1009)^{21,22} and phenalkamine²³ prepared from cashew nuts are under investigation. However, cost, some performance limitations and demand for waste utilization motivated for further research of examining alternative curing agents.

The goal of this study was to investigate the compatibility and performance of the renewable thermosetting plastic platform developed in our laboratory with both glass and natural fibers. While the primary aim of this work was to provide technically viable utilization route for SRM in order to mitigate pressing societal and economic issue, it also sought to contribute with information that could lead to a greater understanding of the interaction between hydrophilic natural fibers and hydrophobic polymer matrices. Weak interactions between these two phases often result in poor compatibility.²⁴ The central proposition of this study was that the incorporation of hydrophilic hydrolyzed proteins could improve the hydrophilicity of the epoxy matrix and thus better interaction with natural fibers.

2. Materials and methods

2.1. Materials

Two types of E-glass fiber mats and hemp mat were used as reinforcing fiber mats. The glass fibers were randomly oriented chopped strand mat (CSM) of 450 g m⁻² and woven roving (WR) of 200 g m⁻², respectively purchased from Ashland Inc. (Ohio, US). Wet laid randomly oriented hemp (HE) mat of 300 g m⁻², prepared through in-house filtration method, was obtained from Alberta Innovates Technology Futures, Edmonton, AB. Diglycidyl Ether of Bisphenol A (DGEBA) epoxy resin (Araldite 506 epoxy resin, number average molecular weight <=700 g mol⁻¹), 4-aminophenyl sulphate (APS) (97%, mol wt 248.3 g mol⁻¹) were obtained from Sigma-Aldrich, St. Louise, MO, USA. SRM was exclusively provided by Sanimax Industries, Inc. (Montreal, QC, Canada). SRM samples were hydrolyzed, and proteinaceous fragments extracted and dried in the laboratory according to.¹⁷ SRM transportation and receiving were conducted according to Transport of Dangerous Goods (TDG)

regulations. Handling and hydrolysis of SRM were conducted according to CFIA protocol.²⁵

2.2. Methods

2.2.1. Hydrolysis of SRM and biorefining. Hydrolysis of the SRM was performed using a 2 L batch reactor (Parr 4530, Parr Instrument, Moline, IL, USA) at a temperature of 180 °C, pressure of at least 1200 kPa and agitation of 200 rpm for 40 minutes in aqueous solution to inactive prions in SRM according to CFIA approved techniques of disposal.²⁵ The mass ratio of SRM to water during hydrolysis was kept to one to one, according to our previous study of SRM hydrolysis.¹⁷ The biorefining of hydrolyzed SRM, focused on separation of salt soluble fractions from the insoluble ash and lipids of the SRM, was conducted as follows: 100 g hydrolyzed SRM was extracted with 450 mL salt solution consisting of 18 g NaCl, 0.23 g MgCl₂, 4.1 g KH₂PO₄ and 4.3 g Na₂HPO₄ according to the method used by Park *et al.*²⁶ by agitating at 200 rpm for 30 min in a shaker (Innova lab shaker, New Brunswick, Canada). The supernatant was separated from the residue through centrifugation (7000 × *g* for 30 min) on Beckman Centrifuge followed by triple hexane extraction to remove lipids and other organic residues. The salt soluble hydrolyzed proteins were then lyophilized and grinded to particle size below 100 μm. The molecular sizes of the extracted hydrolyzates were also studied using size exclusion high performance liquid chromatography (SEC-HPLC) according to the method reported by Mekonnen *et al.*¹⁷ and compared with an external standard.

2.3. Composite specimen preparation

Polymer baselines without reinforcement were prepared by curing calculated quantities of epoxy resin with curing agents (*i.e.* hydrolyzed proteins and APS) as shown in Table 1. Prior to curing, the polymer premix was degassed in a vacuum oven for an hour at 100 °C and cured on silicon molds (22.5 cm × 22.5 cm) at 185 °C for four hours⁹ to make polymer baselines. Fixed 20 vol% pre-cut fiber mats were used to reinforce 80 vol% resin matrix composed of calculated quantities of epoxy resin/curing agent and cured (Table 1). A silicon mold with its bottom covered with polytetrafluoroethylene (PTFE) to prevent sticking of the resin on the mold surface was used to prepare the composites.

About 20% wt of resin mix was first poured on the PTFE sheet covered mold and spread out with hand rollers. A fiber mat was then applied on the top of the resin and rolled with the hand rollers to allow the resin to soak in the matrix. More resin was poured on top of the mat and distributed evenly with the hand rollers. More layers of fiber mats, depending on the type of fiber, were added by alternating the fiber and the resin layers and squeezing the resin into the fiber with the hand rollers. Finally, another PTFE sheet was placed on the top of the composite sandwich to get good surface finish.

The number of fiber mat layers varied with type of the fiber: three layers of CSM, eight layers of WR, and two layers of HE fiber to keep the volume fraction shown in Table 1. The composite sandwiches were degassed and then transferred to



Table 1 Quantities of epoxy resin, curing agent and fiber mat^a

Label	Curing agent	Curing agent (wt%)	Epoxy (wt%)	Fiber (vol%)	Resin (vol%)
APS20	APS	20	80	0	100
P20	Hydrolyzed protein	20	80	0	100
P30	Hydrolyzed protein	30	70	0	100
APS20CSM	APS	20	80	20	80
P20CSM	Hydrolyzed protein	20	80	20	80
P30CSM	Hydrolyzed protein	30	70	20	80
APS20WR	APS	20	80	20	80
P20WR	Hydrolyzed protein	20	80	20	80
P30WR	Hydrolyzed protein	30	70	20	80
APS20HE	APS	20	80	20	80
P20HE	Hydrolyzed protein	20	80	20	80
P30HE	Hydrolyzed protein	30	70	20	80

^a APS20, P20, P30 – 20 wt% APS, 20 wt% and 30 wt% hydrolyzed protein, respectively.

PTFE sheet and then to a French press. The sandwich composites were then pressed at a temperature of 185 °C and clamping pressure of 7 ton for 2 h in the French press to squeeze out trapped air bubbles entrapped in the mat layers and also to overcome springiness of fibers. 20% fiber volume fraction and 3 mm thickness of the plates were achieved by using 3 mm shims and the applied pressure to the plates. Each of the APS/resin and hydrolyzed protein/resin composites were post cured for 2 h at 185 °C and 200 °C, respectively. The prepared polymer sheets and composites were then prepared for property evaluation.

2.3.1. Thermal analysis. Thermogravimetric analysis (TGA) was conducted according to ASTM 2550-11 (Standard Test Method for Thermal Stability by Thermogravimetry) with TA Instruments Q600 analyzer. 10 mg of each sample specimens were heated at 5 °C min⁻¹ from 23 °C to 450 °C under a nitrogen atmosphere to prevent sample oxidation at a flow rate of 100 mL min⁻¹. All thermogravimetric studies were replicated 5 times.

2.3.2. Mechanical property testing. The polymer sheet used as controls and the composites were cut into tensile dog bones and flexural bars for mechanical property evaluation. The tensile dog bones and flexural bars were prepared by water jet cutters (Omax 2652) at a pressure of 50 000 psi from the prepared polymer and composite sheets. Tensile strength tests were conducted according to ASTM D638-08 (Standard Test Method for Tensile Properties of Plastics)²⁷ with a crosshead speed of 5 mm min⁻¹ on an Instron (Instron 4302, Norwood, MA, USA) equipped with a load cell of 10 kN. The flexural strength and modulus was also measured at a crosshead speed of 1.39 mm min⁻¹ in accordance with ASTM D790-07 (Standard Test Methods for Flexural Properties of Unreinforced and

Reinforced Plastics and Electrical Insulating Materials).²⁸ Specimens were conditioned at 23 °C and 50% relative humidity for 48 hours and tested according to the respective ASTM procedures.

2.3.3. Water absorption tests. Water absorption performance of the composites was assessed in both short-term (one day and seven days) and long-term (thirty days). The short-term water absorption tests were performed as per ISO 62:2008 (determination of water absorption in plastics). At least five samples of each specimen were cut from the molded composite sheets into 5 cm × 2 cm dimensions and dried to constant weight. The dried specimens (W_1) were then submerged in 100 mL distilled water at room temperature for one day (24 h) and seven days. After removal from the water, the extra water on the surface of the specimens were wiped with a clean dry cloth, weighed immediately (W_2). The percentage of water uptake (water absorption) was calculated by weight difference between the samples immersed in water and dry samples using eqn (1):

$$\text{Water absorption} = ((W_2 - W_1)/W_1) \times 100 \quad (1)$$

The long-term water absorption tests, on the other hand were investigated in accordance with ASTM D570-98 method,²⁹ in such a way that the tensile and flexural properties would also be studied after the long-term moisture conditioning. Tensile and flexural bar samples that were dried to constant weight (W_1) were immersed in deionized water for 30 days. The extra water on the surface of the soaked samples was then wiped with a clean dry cloth and immediately weighed (W_2). The water absorption, tensile and flexural properties were then evaluated in accordance with ASTM D570-98 (ref. 29) (eqn (1)), ASTM D638-08 (ref. 27) and ASTM D790-07,²⁸ respectively.

2.3.4. Scanning electron microscopy (SEM). Fracture surfaces from tensile tests before and after water soaking (1 month) were imaged using a Hitachi S-3000 N scanning electron microscope (SEM) at accelerating voltage 15 kV with a tungsten filament. Fracture surfaces were gold coated prior to imaging using an Edwards S150 Sputter Coater.

2.3.5. Statistical analysis. Statistical analyses of data were conducted using the statistical software package Minitab version 15. Single factor analysis of variance (ANOVA) was used to identify significant differences among mean values, according to the least significant difference (LSD) criteria with a 95% confidence level ($P < 0.05$).

3. Results and discussion

3.1. Specified risk material hydrolysis and characterization

One method of adding value to SRM that otherwise is an industrial waste is hydrolysis with the aim of breaking down BSE causing prion proteins into short protein chains and peptides.^{9,15} Studies have shown that thermal hydrolysis mentioned in the method section at a temperature, pressure and time of at least 180 °C, 450 kPa, 40 min, respectively, inactivates BSE causing prions.^{13,25} The molecular size of representative non-biohazardous unhydrolyzed meat and bone meal (MBM) protein extract and biorefined TH SRM extract



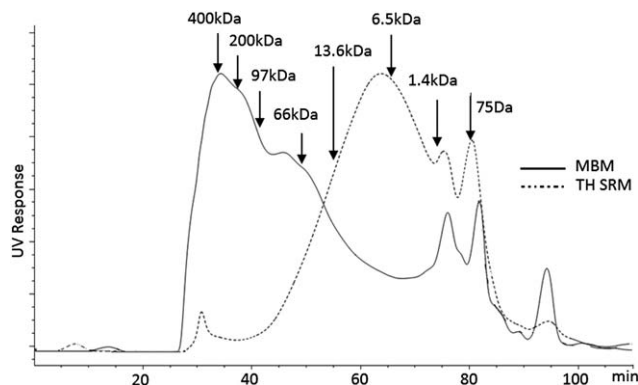


Fig. 1 GP-HPLC chromatograms of meat and bone meal (MBM) protein extract prior to hydrolysis and hydrolyzed protein extract of thermal hydrolyzed specified risk material (TH SRM).

studied using gel permeation chromatography (GPC) is presented in Fig. 1.

The molecular size of unhydrolyzed MBM protein extract was broadly distributed over a wide range of molecular sizes. On the other hand, the hydrolyzed proteins obtained from the hydrolyzed SRM had relatively narrower size distribution. The majority of these hydrolyzates lied below 66 kDa, and the average was about 13 kDa. This showed that the thermal hydrolysis severely chopped the SRM protein molecules into short protein and peptide molecules. Moreover, the narrower molecular size distribution imparted by the hydrolysis offers more uniformity and hence resembling behavior and functionality than a broadly distributed unhydrolyzed protein. Previous works reported that hydrolyzed SRM protein fractions were large enough to possess most of the functional groups of proteins.¹⁷ Additionally, the reactivity of the hydrolyzed protein functional groups with glutaraldehyde¹⁵ and epoxy resin⁹ to make thermosetting polymers was also reported.

3.2. Mechanical properties

The mechanical strength of composites is an intrinsic property of the constituents, *i.e.* reinforcement used, the nature and formulation of the matrix³⁰ and of the nature of the interaction between these two phases.³¹ Tensile strength and modulus of composites made of epoxy resin cured with 20% APS and 20 and

30% hydrolyzed protein, reinforced with CSM, WR and HE fibers and the respective control matrices are summarized in Fig. 2 and 3. In the following section, the effect of the matrices and reinforcing fibers used on the mechanical properties of the composites are discussed.

3.2.1. Effect of matrix type. The matrix in a fiber-reinforced composite holds the fiber together, transfers mechanical loads applied to those fiber and protects them from mechanical damage and other environmental factors.⁴ In this research a thermosetting resin based systems were used as matrices for the composites. The resin systems were (i) synthetic resin composed of epoxy resin cured with APS and (ii) bio-based resin composed of epoxy resin cured with hydrolyzed proteins. The tensile and flexural property of the composites made with each matrix and reinforcing filler combination is presented in Fig. 2 and 3, respectively. The epoxy polymers cured with APS, P20 and P30 generally exhibited higher tensile strength and modulus compared to many polyethylene terephthalate³² and polypropylene³³ owing to their thermosetting behavior.³⁴ The matrices used in this research did not exhibit significant difference ($p > 0.05$) of tensile strength and modulus with each other. Whenever APS cured epoxy was used as the matrix polymer, the composites exhibited significantly higher tensile strength and modulus with all the fiber types. Since the matrices did not exhibit significant difference of either tensile strength or modulus between each other, the only plausible explanation here would be better interaction of the synthetic APS cured polymer with each type of fiber than the hydrolyzed protein based biopolymeric systems. Weak interaction of fiber with the matrix usually results in slippage and segregation of fiber from the matrix during testing or application that may result in poor mechanical property. The P20 and P30 matrix based composites did not exhibit tensile strength difference; however the P30 composite with WR reinforcement exhibited significantly lower tensile modulus. This behavior may be attributed to the higher viscosity of P30 compared with P20, which may have resulted in limited spreading of the matrix on the fiber and therefore weaker interactions between the two phases.

The flexural strength of the synthetic and bioresin polymeric matrices (controls) also did not exhibit significant difference ($p > 0.05$) among each other. Matrices reinforced with CSM resulted in significantly improved flexural strength and

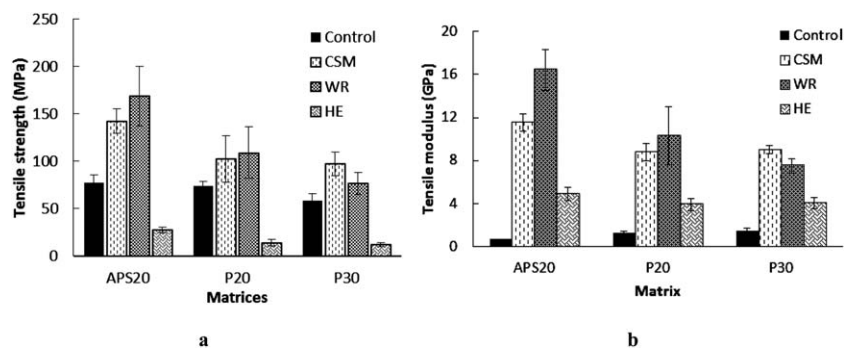


Fig. 2 Tensile strength (a) and tensile modulus (b) of 20APS, 20 and 30P based matrices and their counter composites reinforced with CSM, WR and HE fibers reinforced with CSM, WR and HE fibers.



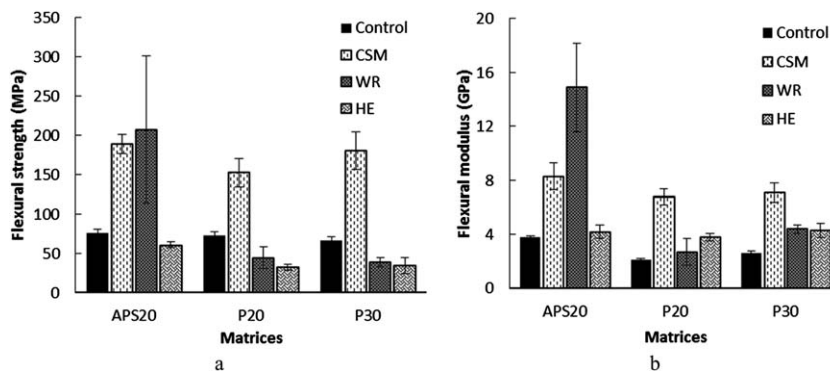


Fig. 3 Flexural strength (a) and flexural modulus (b) 20APS, 20 and 30P based matrices and their counter composites reinforced with CSM, WR and HE fibers reinforced with CSM, WR and HE fibers.

modulus of all systems. Nevertheless, the flexural strength of the P20 and P30 polymeric matrices, were significantly reduced with WR and HE reinforcement. This apparent contraction can be attributed to the difference in number of layers (eight) used in the WR mat, compared with the HE and CSM mats (two). As discussed above, this difference was motivated by the choice to maintain constant volume fraction of fibers. The use of such multiple layers obviously resulted in more interfaces between the reinforcement and polymeric matrix. These interfaces are known weak spots between the matrix and reinforcement, and as a result delamination was visually observed when the tensile and flexure bars were machined (Fig. 4(b), (e) and (h)). The delamination occurred as a result of poor bonding and consolidation, resulted in comparatively weak flexural strength of WR reinforced hydrolyzed protein cured polymers (P20WR and P30WR). Improved flexural strength of the composites was observed when synthetic resin was used than the bioresins, which might be due to better interfacial interaction and consolidation. The flexural modulus on the other hand did not change when the resins are changed, with the exception of the WR reinforced polymers.

3.2.2. Effect of reinforcement. The principal goal of reinforcing polymers is to improve the strength and stiffness of the resulting composites.³⁵ The tensile and flexural strengths (Fig. 2 and 3) of the experimental materials revealed that large disparity exists between the natural fiber containing composites and glass fibers. The tensile strengths of the composites were improved when either of the CSM or WR glass fibers was used as reinforcing filler. However, the tensile strengths of all the composites were significantly reduced from the base polymers during HE reinforcement. Such reduction in tensile strength for composites compared to the unreinforced polymers could be attributed to stress concentration caused by the presence of less strainable fibers in conjunction with a brittle matrix.³⁶ Sawpan *et al.*,³⁶ Fuqua and Ulven³⁷ and Karnani *et al.*³⁸ also observed a similar trend of inferior tensile strength of composite than the pure polymer reinforced with lignocellulosic fibers.

The tensile strength of the composite made of APS based matrix and either of the glass fiber mats (WR and CSM) exhibited the highest tensile strength and modulus. Stiffness is closely related to consolidation of the matrix with the reinforcing fillers.³¹ In all cases studied here, the stiffness of the

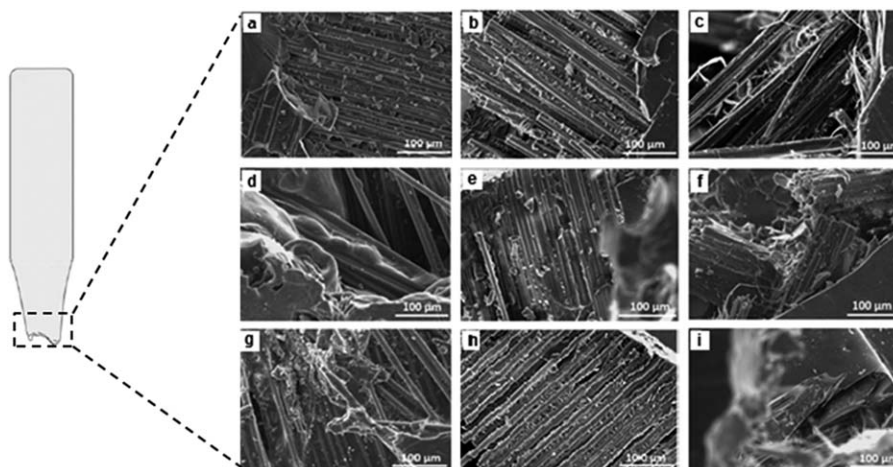


Fig. 4 SEM images of fractured surfaces after tensile testing for (a) APS20CSM (b) APS20WR (c) APS20HE (d) P20WR (e) P20WR (f) P20HE (g) P30CSM (h) P30WR (i) P30HE.



composites was unanimously improved when compared with the control polymers (Fig. 3b): (1) HE reinforcement improved the modulus of the APS20, P20 and P30 matrix polymers by about 600, 202 and 170%, respectively; (2) WR improved the modulus of APS20, P20 and P30 matrices by 2242, 692 and 400%, respectively; (3) CSM also improved the modulus of APS20, P20 and P30 matrices by 1542, 576, and 500%, respectively.

With respect to flexural property, all reinforcing efforts improved the flexural moduli; despite the improvement by HE is only marginal. CSM improved the flexural strength of all its respective composites; while WR reinforced APS resin (APS20WR) exhibited the highest flexural strength (207.6 MPa). A decrease was observed when WR was compounded with the bioresins (P20 and P30) as a result of delamination of layer of the composite, probably because of poor interfacial adhesion of the smooth woven surface of WR with the hydrolyzed protein based bioresins (P20 and P30). Furthermore, since eight layers of WR were used in all WR based composites, it obviously formed more interfaces with the matrix than the other two (HE and CSM) based composites that used only two layers. It can be anticipated that the interface is the weakest link in comparison to the body of the polymer matrix or the fiber itself that results in failure under external force. Thus, the use of eight layer mats in WR reinforcement that resulted in formation of more interfaces might be the reason for the relatively poor flexural strength of WR reinforced composites. Preferential adsorption of resin components onto the surface of the fibers, usually result in a gradient of cure^{39,40} and difference in effectiveness of the interface in transferring stress, that may have led to the observed variation. Reinforcement with HE did not result in greater flexural strength improvement of any of the composites. The presence of pectins and waxes in native HE may lead to the formation of ineffective interface between the fiber and matrix, with subsequent problems such as debonding and voids in the resulting composites.³⁶ Therefore, surface treatment of natural fibers using enzymatic, chemical and physical techniques before introducing it into the polymeric matrix material is a common practice to improve the adhesion between the fiber and the matrix and as a result the mechanical properties of the resulting composite.⁴⁰ In addition, the use of coupling agents and compatibilizers to reduce hydrophilicity and enhance compatibility with different matrices is another area of research.⁴¹

3.3. Thermal stability

Thermal stability data are crucial to design and develop composites. This is because it is one of the limiting factors in the selection of curing temperature in the case of thermosets, extrusion and injection molding temperature in thermoplastic matrix composites and it determines a possible range of user application. The thermal stability data of the polymeric matrices and their counter composites reinforced with CSM, WR and HE based mats investigated with thermogravimetric analysis (TGA) is presented in Fig. 4.

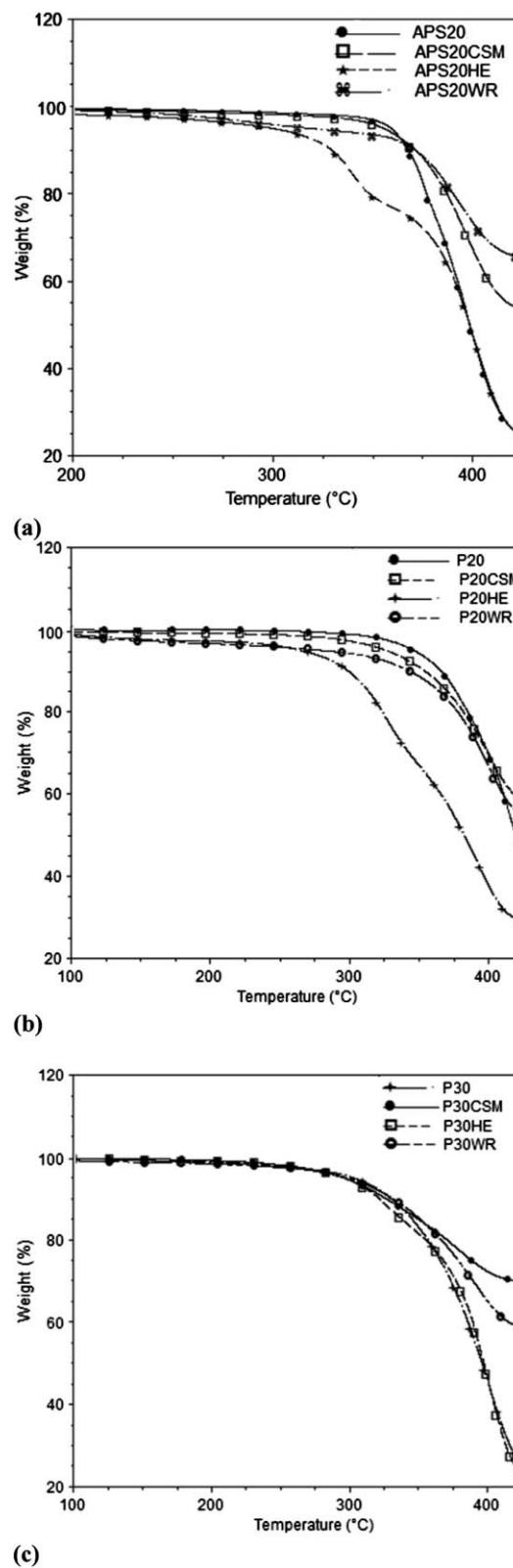


Fig. 5 TGA thermograms of (a) 20% APS based composites (b) 20% hydrolyzed protein based composites (c) 30% hydrolyzed protein based composites, reinforced with each of the CSM, WR and hemp fiber mats. Each experiment was replicated 5 times.



Table 2 Five and twenty five percent weight loss temperatures and residue left after 425 °C degradation^a

Label	T_5 (°C)	T_{25} (°C)	Residue left after 425 °C (%)
APS20	356.3 ± 1.1 ^a	379.5 ± 0.3 ^a	24.9 ± 0.3 ^a
P20	286.3 ± 0.8 ^b	355.0 ± 0.9 ^b	27.8 ± 0.4 ^a
P30	308.2 ± 2.3 ^c	369.2 ± 1.3 ^a	25.5 ± 0.4 ^a
APS20CSM	358.8 ± 1.0 ^a	393.1 ± 1.5 ^c	55.7 ± 1.7 ^b
P20CSM	329.4 ± 7.6 ^d	391.5 ± 2.0 ^c	57.9 ± 0.6 ^b
P30CSM	305.0 ± 5.1 ^b	380.7 ± 3.4 ^{ac}	58.6 ± 0.2 ^b
APS20WR	351.9 ± 6.4 ^a	398.6 ± 3.5 ^c	66.3 ± 2.6 ^c
P20WR	328.9 ± 16.7 ^d	399.6 ± 8.0 ^c	62.8 ± 3.5 ^c
P30WR	303.4 ± 17.9 ^b	378.1 ± 5.7 ^a	54.4 ± 3.5 ^c
APS20HE	295.0 ± 17.0 ^b	356.3 ± 10.2 ^b	24.4 ± 0.5 ^a
P20HE	247.6 ± 17.7 ^e	331.1 ± 1.9 ^d	25.6 ± 3.4 ^a
P30HE	284.2 ± 10.3 ^b	347.3 ± 18.1 ^b	27.3 ± 3.6 ^a

^a Data in this table are means ± standard deviation with a sample size of at least 5 for each group. ^{a-c}Means with the same superscript letters within a column are not significantly different at $P < 0.05$ level.

The composites prepared using hemp, *i.e.* APS20HE, P20HE and P30HE were characterized by two stages of degradations as shown in Fig. 5. These two stages were likely attributed to the difference in thermodegradability of the cellulose and hemicellulose components of the hemp fiber. Previous studies demonstrated that the hemicellulose degrades at lower temperature than cellulose and lignin of lignocellulosic materials in non-oxidative environment.^{33,42} Based on these observations, the first and second degradation peaks of HE based composites may be attributed to hemicellulose and cellulose degradation of the hemp fiber, respectively. This is in line with data obtained by Panthapulakkal and Sain³³ for hemp reinforced polypropylene. Five percent weight loss (T_5), twenty five percent weight loss (T_{25}) and the residue left after 425 °C degradation is summarized in Table 2. The onset of degradation occurred between a wide temperature windows of 296–371 °C. Five percent weight loss (T_5) happened between 248 and 295 °C for HE reinforced composites and above 305 °C for WR and CSM reinforced composites, demonstrating the dependence of degradation on the specific reinforcing fibers. The T_5 and T_{25} temperature's apparently depended on the matrix type as well (Table 2). The APS20 based composites exhibited higher degradation temperature, while the P30 based composites exhibited lower temperature because hydrolyzed protein and some of their constituent amino acids start to degrade above 230 °C.⁴³ The residue left was found to be dependent mainly on the type of reinforcing fiber. The glass fiber composites (CSM and WR) showed more left over residue than the hemp based composites – owing to higher thermal resistivity of glass fibers than hemp.

Thermal stabilities of all the biocomposites achieved here were acceptable for end user application purpose. Thermal stability was shown here to be not a concern at all as far as curing temperature is concerned, as the curing took place at a maximum temperature of 200 °C. Catalysts and/or accelerators can also be included to cut down the curing temperature and the energy consumption as well.

3.4. Water resistance

3.4.1. Water absorption. Water absorption is an important parameter to study the degradation of polymers and polymer composites. Most polymers and polymer composites absorb moisture in humid atmosphere and when immersed in water,^{9,44} resulting in the deterioration of fiber–matrix interface region, diminished stress transfer efficiencies and therefore poorer mechanical and dimensional properties.^{44,45} Triplicate determination of water absorption of composites after one, seven and thirty days of water immersion, calculated by weight gain is displayed in Fig. 5.

It is observed that both the matrix type and fiber type had an effect on the water absorption of the composites. The synthetic matrix, composed of epoxy resin cured with APS, was more resistant to moisture than the hydrolyzed protein (P20 and P30) cured matrix. This behavior signifies that presence of a single functional group ($-\text{NH}_2$) in APS that crosslinks with the epoxy resin effectively may not leave behind any residual groups to associate with water. On the other hand, hydrolyzed proteins have several functional groups such as primary and secondary amine ($-\text{NH}_2$, $-\text{NH}$), carboxyls ($-\text{COOH}$), sulfhydryls ($-\text{SH}$) and hydroxyl ($-\text{OH}$) associated with side chain of the amino acids and the end groups of the hydrolyzed protein chain that would react with epoxy to cure.⁹ Even though such abundant functional groups of hydrolyzates provide an excellent opportunity to crosslink with epoxy resin and bond with the fibers, it is plausible to expect that some hydrophilic unreacted left over functional groups may associate with water leading to higher water absorption. Presence of incomplete network chains is another possibility that can lead to leaching out of matter into the water. Such migration of matter leaves behind voids or pores that would drive more water diffusion into the composites resulting in higher moisture absorption of hydrolyzed protein cured matrices.

It was also observed (Fig. 6) that HE and WR reinforced composites absorbed more water than their counterpart CSM based composites in most cases. WR reinforced composites also exhibited high moisture absorption when compounded with both of P20 and P30. This is consistent with the delamination behavior as a result of the poor interfacial interaction of hydrolyzed protein with WR observed and discussed in the mechanical property section. Glass fibers including WR and

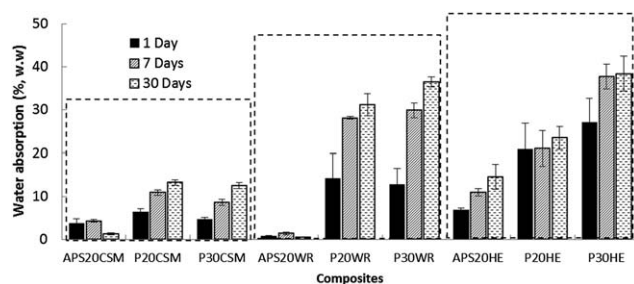


Fig. 6 Water absorption of the APS, 20% and 30% hydrolyzed protein composites reinforced with CSM, WR and HE fibers at day 1, 7 and 30. Error bars are standard deviation of quintuplicate determination.



CSM absorb negligible amounts of water⁴⁴ while cellulosic fibers such as hemp is well-known to absorb water and swell owing to its hydrophilic nature.⁴⁶ It has been demonstrated that lower moisture absorption can be attributed to better adhesion between matrix and fibers, leading to fewer and smaller gaps in the interfacial region and hence less diffusion of water into the biocomposites.⁴⁶ For instance, the water absorption difference observed between WR and CSM reinforced composites might be completely attributed to the adhesion bonding variation.

The highest water absorption was observed when HE is compounded with hydrolyzed protein based polymeric matrices (P20HE and P30HE) because of the absorption contributed by both the matrix and fiber. For hemp reinforced composites, a maximum water gain of 38% for P30HE and a minimum of 14.5% for APS20HE were observed. It was also shown in Fig. 6 that more than half of the total water absorbed in the thirtieth day was absorbed in the first day; its absorption rate was then decelerated until the seventh day and further deceleration of the rate until the final testing day, thirtieth day. Espert *et al.*⁴⁶ and Dhakal *et al.*⁴⁵ reported similar trend of rapid water absorption of biocomposites in the first 20 h, then reduced rate until it reaches a saturation point where no more water was absorbed and the content of water in the composites remained the same.

3.4.2. Influence of water absorption on mechanical properties of the biocomposites. Moisture absorption is one of the main concerns for use of natural fiber reinforced composite materials and the effect on its performance.⁴⁷ Moisture absorption, attributed to diffusivity of water into the material, leads to moisture induced interfacial cracks as a result of degradation in the fiber–matrix interface region.⁴⁵ The tensile and flexural properties of the APS and hydrolyzed protein based composites reinforced with each of the CSM, WR and HE fibers were tested after complete soaking of the respective tensile dog bones and flexural bars for 30 days. The influence of water soaking on mechanical properties of the specimens and comparison with the original dry specimen is shown in Fig. 7.

All composite specimens showed significant reduction of tensile strength when tested after 30 day soaking with the exception of APS20CSM and APS20WR. The most pronounced tensile strength deteriorations were observed for the hydrolyzed protein based matrices. P30HE, P20WR and P30WR exhibited 61, 60 and 46% tensile strength reduction, respectively. This is not surprising, because it was these same composites that exhibited the highest water absorption (Fig. 6) signifying that higher water absorption resulted in deterioration of tensile strength. With respect to tensile modulus, significant reduction

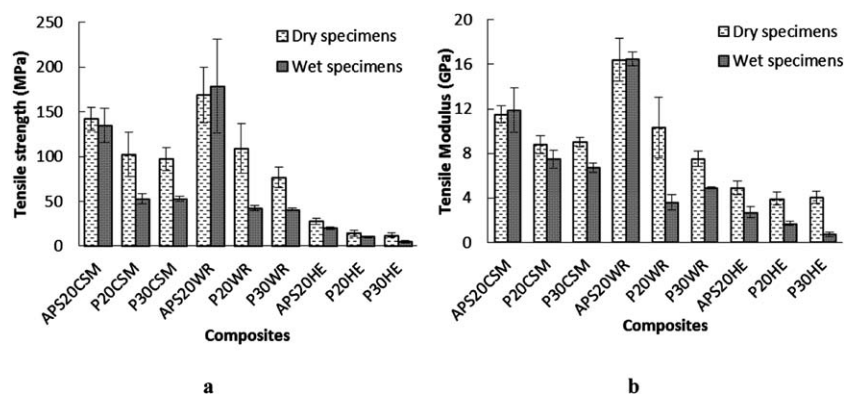


Fig. 7 Comparison of (a) tensile strength and (b) modulus of dry composite specimens and wet composite specimens. Error bars are standard deviations from at least quintuplicate determinations.

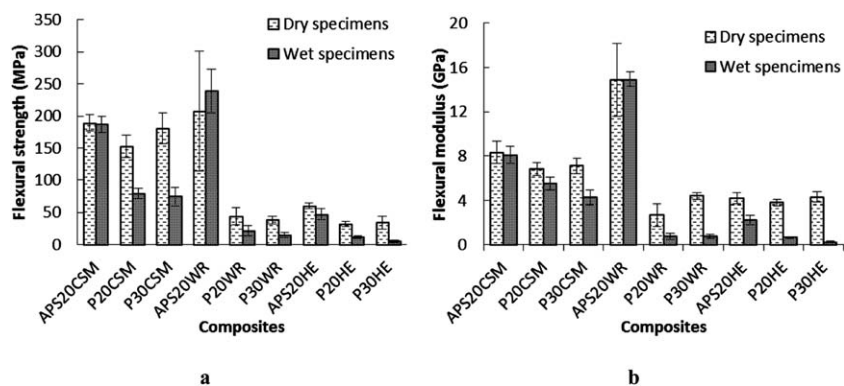


Fig. 8 Comparison of (a) flexural strength and (b) flexural modulus of dry and wet composites. Error bars are standard deviations from at least quintuplicate determinations.



was observed for all composites made of P20 and P30 matrices regardless of the fiber type, and HE reinforced composites regardless of matrix type used. The influence of water absorption resulted in a similar pattern of flexural strength and modulus reduction as that of the tensile strength and modulus (Fig. 8) with reductions in flexural strength and modulus observed when either the matrix was hydrolyzed protein based or fibers used were HE, attributed to high water affinity of both ingredients. The highest reduction of flexural strength and modulus was observed when hydrolyzed protein cured epoxy matrices were reinforced with HE fiber.

Water absorption in composites may alter the structure, mechanical and thermal properties of the matrices,⁴⁸ fibers,⁴⁹ and the interface between the two. High water absorption of the hydrolyzed protein based matrices (P20 and P30) may shrink and deteriorate the chain orientation resulting in the observed relatively poor mechanical performance. Furthermore, higher moisture absorption of either the matrices or fibers causes swelling, resulting in developing gradient shear stress at the interface and initiating micro-cracks and debonding of fiber from the matrix and ultimately deteriorating the integrity of the composite. More micro-cracks and debonding of water soaked specimens (after) compared to the original specimens (before) were observed on SEM micrographs (Fig. 9). As such, the

composite developed may not serve for purposes that require long term moisture exposure. Nevertheless, the good mechanical performance in dry environment could allow it for other applications including indoor construction, furniture adhesives, degradable construction practice, mulching trays *etc.*

In addition, some components of the hydrolyzed protein based matrices (P20 and P30) were observed to be released into the immersion tank. Analysis of the leachate (result not shown here) exhibited that salts used during hydrolyzed protein extraction and minor quantities of incompletely networked hydrolyzed proteins were released during the prolonged soaking. Similar leaching of natural fibers components were expected as natural fibers themselves commonly contain high levels of polar extractives.⁵⁰ It is plausible that the release of such components can result in formation of voids and porosity as shown in Fig. 9, which may act as epicenters of stress concentrators leading to tensile and flexure failure of the composite specimens.

It has been reported that water molecules act as a plasticizing agent in composite materials exposed to moisture,^{46,49,51} which would lead to an increase of the maximum strain after water absorption. The tensile strain and flexural strain at break of dry and wet composite specimens are presented in Table 3. An increase in both tensile and flexural strain rate was observed

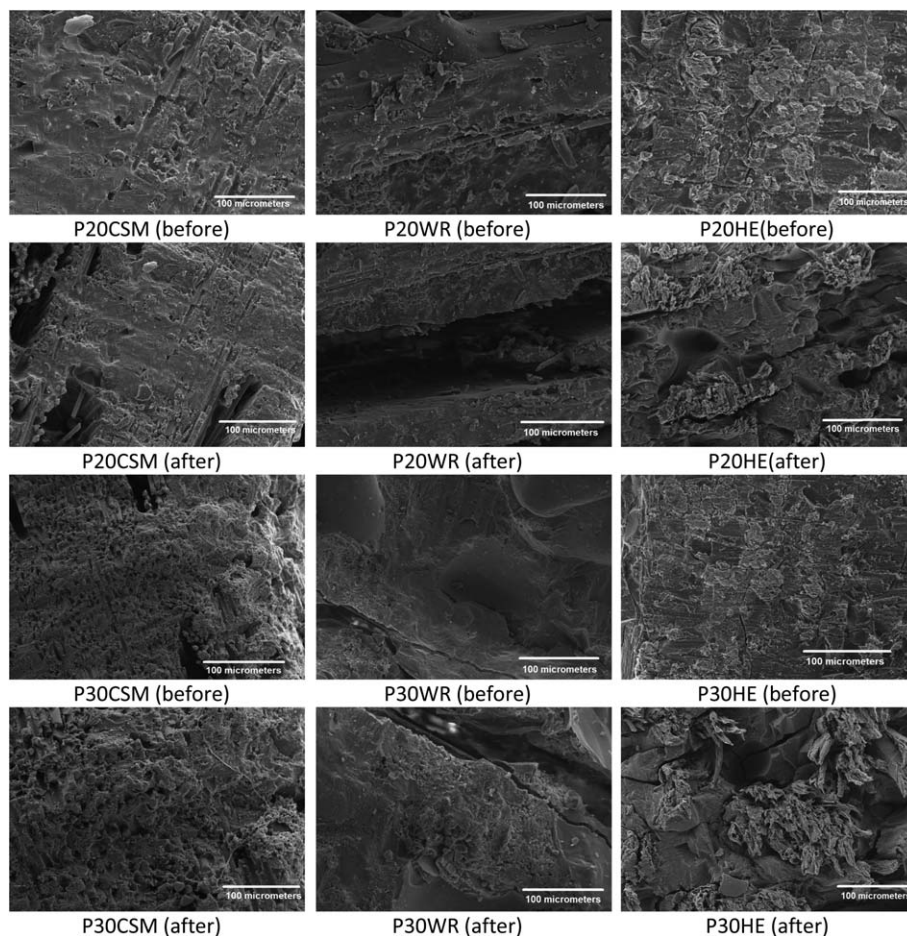


Fig. 9 Scanning electron microscopy of fractured surfaces of protein based composites before and after 1 month soaking in water.



Table 3 Tensile and flexural strain at break of dry and wet composite specimens^a

	Tensile strain at break (%)		Flexural strain at break (%)	
	Dry	Wet	Dry	Wet
APS20CSM	1.6 ± 0.2 ^a	1.5 ± 0.2 ^a	2.6 ± 0.3 ^{ab}	2.6 ± 0.2 ^{ab}
P20CSM	1.6 ± 0.3 ^a	0.8 ± 0.1 ^b	2.5 ± 0.3 ^{ab}	1.5 ± 0.1 ^a
P30CSM	1.5 ± 0.2 ^a	0.9 ± 0.1 ^b	2.7 ± 0.3 ^{ab}	1.8 ± 0.1 ^a
APS20WR	1.4 ± 0.1 ^a	1.4 ± 0.4 ^a	1.4 ± 0.4 ^a	1.7 ± 0.1 ^a
P20WR	1.4 ± 0.2 ^a	1.2 ± 0.2 ^a	1.9 ± 0.3 ^a	3.2 ± 0.9 ^d
P30WR	1.6 ± 0.1 ^a	1.0 ± 0.1 ^b	1.0 ± 0.2 ^b	3.6 ± 1.2 ^d
APS20HE	0.8 ± 0.1 ^c	1.1 ± 0.2 ^b	2.1 ± 0.3 ^{ab}	4.0 ± 0.5 ^d
P20HE	0.6 ± 0.2 ^c	0.9 ± 0.1 ^b	1.0 ± 0.1 ^a	3.3 ± 0.4 ^d
P30HE	0.4 ± 0.1 ^c	1.1 ± 0.5 ^a	1.0 ± 0.3 ^a	4.1 ± 0.7 ^d

^a Data in this table are means ± standard deviation with a sample size of at least 5 for each group. Means with the same superscript letters within adjacent column are not significantly different at $P < 0.05$ level.

for all HE reinforced composites. The mechanism of water plasticizing fibers is that water that penetrated the cellulose network of natural fibers will attach itself by chemical links such as hydrogen bonding to hydroxyl (-OH) groups in the cellulose molecules. The attached water molecules then swell the fiber and force the cellulose molecules apart destroying the rigidity of the cellulose structure. This allows the cellulose molecules to move more freely and hence water here acted as a plasticizer.^{45,46} Moisture absorption has also resulted in flexural strain enhancement of the P20WR and P30WR composites. Since WR fiber barely absorbs any moisture the tensile and flexural strain improvement in these specimens can be due to the plasticization of the hydrolyzed protein cured matrices attributed to left over hydrophilic sites.

4. Conclusion

Biocomposites were successfully developed with hemp and two types of glass fiber mats to reinforce hydrolyzed protein-cured and APS cured epoxy resin polymers using French Press compression. It was observed that all the reinforcing fibers improved the tensile and flexural stiffness of the biocomposites made. The thermal stability study also displayed that all composites prepared were stable until a temperature close to 230 °C. The use of waste protein hydrolyzate extracts, hydrolyzed proteins, as crosslinking agent of epoxy resins in making biocomposites was novel and promising and results could be insightful that can be extended for uses other proteinaceous biomasses as curing agent of epoxy resins. The study also showed that the mechanical performance of the biocomposites was negatively affected by the water absorption. Generally, the conjuncture of hydrolyzed protein cured epoxy with hemp fiber exhibited comparatively lower water resistance. The influence of water absorption was in such a pattern that water-saturated samples presented poor mechanical properties. Water absorbed HE reinforced composites specifically exhibited an improvement in tensile strain due to plasticization effect of the water molecules on the cellulose component. These results highlight the importance of interfacing the matrix and reinforcing fiber

phases may be needed to improve the mechanical performance and degradation behavior under moisture sorption.

Acknowledgements

The financial support from Alberta Prion Research Institute (APRI) and Alberta Livestock and Meat Agency (ALMA) for this research is gratefully acknowledged. We also thank Sanimax Inc. (Montreal, Canada) for supplying SRM and MBM samples.

References

- O. Faruk, A. K. Bledzki, H. P. Fink and M. Sain, *Prog. Polym. Sci.*, 2012, **37**, 1552–1596.
- E. C. Lee, K. A. Flanigan, D. F. Williams, D. F. Meilewski and D. Q. Houston, in *5th Annual SPE Automotive Composites Conference and Exhibition*, Troy, MI, 2005.
- H. Cheung, M. Ho, K. Lau, F. Cardona and D. Hui, *Composites, Part B*, 2009, **40**, 655–663.
- P. Fowler, J. Hughes and R. Elias, *J. Sci. Food Agric.*, 2006, **86**, 1781–1789.
- G. Bogoeva-Gaceva, M. Avella, M. Malinconico, A. Buzarovska, A. Grozdanov, G. Gentile and M. E. Errico, *Polym. Compos.*, 2007, **28**, 98–107.
- G. Mehta, A. Mohanty, M. Misra and L. Drzal, *Green Chem.*, 2004, **6**, 254–258.
- J. C. Benezet, A. Stanojlovic-Davidovic, A. Bergeret, L. Ferry and A. Crespy, *Ind. Crops Prod.*, 2012, **37**, 435–440.
- N. Reddy and Y. Q. Yang, *Biomacromolecules*, 2007, **8**, 638–643.
- T. Mekonnen, P. Mussone, N. El-Daher, P. Choi and D. Bressler, *Macromol. Mater. Eng.*, 2013, DOI: 10.1002/mame.201200429.
- L. Shen, E. Worrell and M. Patel, *Biofuels, Bioprod. Biorefin.*, 2010, **4**, 25–40.
- European Commission, *Off. J. Eur. Communities*, 1994, **L172**, 23–24.
- CFIA, Enhanced Feed Ban Decision Documents, <http://www.inspection.gc.ca/english/anima/heasan/disemala/bseesb/enhren/decdoce.shtml>, accessed, February 12, 2010.
- DHHS-FDA, Food and Drug Administration, in *Final Rule. Fed. Regist.* 73, 22719–22758, ed. DHHS-FDA, April 25, 2008, pp. 22719–22758.
- E. Cascarosa, G. Gea and J. Arauzo, *Renewable Sustainable Energy Rev.*, 2012, **16**, 942–957.
- N. El-Thaher, T. Mekonnen, P. Mussone, D. Bressler and P. Choi, *Ind. Eng. Chem. Res.*, 2013, **52**, 4987–4993.
- S. Lukubira and A. A. Ogale, *J. Appl. Polym. Sci.*, 2013, DOI: 10.1002/app.39156.
- T. H. Mekonnen, P. G. Mussone, N. Stashko, P. Y. Choi and D. C. Bressler, *Process Biochem.*, 2013, **48**, 885–892.
- T. H. Mekonnen, P. G. Mussone, H. Khalil and D. C. Bressler, *J. Mater. Chem. A*, 2013, DOI: 10.1039/c3ta12555f.
- D. Smith, *Metabolism, Pharmacokinetics and Toxicity of Functional Groups: Impact of the Building Blocks of Medicinal Chemistry on Admet*, 2010, pp. 1–530.



- 20 L. Conde-Salazar, R. Valks, J. Malfeito, C. Garcia and S. Ledo, *Contact Dermatitis*, 2004, **51**, 217–218.
- 21 H. Manuel and R. Gaymans, *Polymer*, 1993, **34**, 4325–4329.
- 22 N. Supanchaiyamat, P. Shuttleworth, A. Hunt, J. Clark and A. Matharu, *Green Chem.*, 2012, **14**, 1759–1765.
- 23 S. Pathak and B. Rao, *J. Appl. Polym. Sci.*, 2006, **102**, 4741–4748.
- 24 H. Ku, H. Wang, N. Pattarachaiyakooop and M. Trada, *Composites, Part B*, 2011, **42**, 856–873.
- 25 CFIA, Animal Health Feed Ban Controls, BSE Manual of Procedures, <http://www.inspection.gc.ca/english/anim/heasan/disemala/bseesb/enhren/decdoce.shtml>, accessed September 09, 2010.
- 26 S. K. Park, D. H. Bae and N. S. Hettiarachchy, *J. Am. Oil Chem. Soc.*, 2000, **77**, 1223–1227.
- 27 ASTM D638-08, in *Annual Book of ASTM Standards*, West Conshohocken, PA, 2008.
- 28 ASTM D790-07, in *Annual Book of ASTM Standards*, West Conshohocken, PA, 2007.
- 29 ASTM D570-98, in *Annual Book of ASTM Standards*, West Conshohocken, PA, 1998.
- 30 Y. Dong and D. Bhattachalyya, *Composites, Part A*, 2008, **39**, 1177–1191.
- 31 W. J. Liu, K. Thayer, M. Misra, L. T. Drzal and A. K. Mohanty, *Polym. Eng. Sci.*, 2007, **47**, 969–976.
- 32 V. Tserki, P. Matzinos, N. E. Zafeiropoulos and C. Panayiotou, *J. Appl. Polym. Sci.*, 2006, **100**, 4703–4710.
- 33 S. Panthapulakkal and M. Sain, *J. Appl. Polym. Sci.*, 2007, **103**, 2432–2441.
- 34 J. F. Shackelford, *Introduction to Materials Science Engineering*, New York, 1985.
- 35 R. Malkapuram, V. Kumar and Y. S. Negi, *J. Reinf. Plast. Compos.*, 2009, **28**, 1169–1189.
- 36 M. A. Sawpan, K. L. Pickering and A. Fernyhough, *J. Compos. Mater.*, 2012, DOI: 10.1177/0021998312449028.
- 37 M. A. Fuqua and C. A. Ulven, *J. Biobased Mater. Bioenergy*, 2008, **2**, 258–263.
- 38 R. Karnani, M. Krishnan and R. Narayan, *Polym. Eng. Sci.*, 1997, **37**, 476–483.
- 39 E. Mäder and E. Pisanova, in *Macromolecular Symposium*, 2001, pp. 189–212.
- 40 Y. Li and Y. W. Mai, *J. Adhes.*, 2006, **82**, 527–554.
- 41 J. Gassan and V. S. Gutowski, *Compos. Sci. Technol.*, 2000, **60**, 2857–2863.
- 42 S. N. Monteiro, V. Calado, J. S. Rodriguez and F. M. Marge, *Journal of Materials Research and Technology*, 2012, **1**, 117–126.
- 43 W. J. Tang, C. X. Wang and D. H. Chen, *J. Anal. Appl. Pyrolysis*, 2006, **75**, 49–53.
- 44 O. Errajhi, J. Osborne, M. Richardson and H. Dhakal, *Compos. Struct.*, 2005, **71**, 333–336.
- 45 H. N. Dhakal, Z. Y. Zhang and M. O. W. Richardson, *Compos. Sci. Technol.*, 2007, **67**, 1674–1683.
- 46 A. Espert, F. Vilaplana and S. Karlsson, *Composites, Part A*, 2004, **35**, 1267–1276.
- 47 M. M. Thwe and K. Liao, *Composites, Part A*, 2002, **33**, 43–52.
- 48 R. J. Morgan, J. E. Oneal and D. L. Fanter, *J. Mater. Sci.*, 1980, **15**, 751–764.
- 49 A. Stamboulis, C. A. Baillie and T. Peijs, *Composites, Part A*, 2001, **32**, 1105–1115.
- 50 C. Loxton and J. Hague, *Use of Recycled Wood and Paper in Building Applications*, 1997, pp. 190–192.
- 51 P. V. Joseph, M. S. Rabello, L. H. C. Mattoso, K. Joseph and S. Thomas, *Compos. Sci. Technol.*, 2002, **62**, 1357–1372.

