

Table 1. Continued

	Controlling For Bilingualism				Controlling For Non-Bilingualism			
	E ²	r ²	F	signif.	E ²	r ²	F	signif.
Education By								
Job Type	.0690	.0431	1.338	---	.1892	.1410	3.024	.001
Income	.0569	.0045	2.774	.001	.1134	.0396	1.787	---
Length Employed	.1043	.0661	2.129	.01	.1462	.0121	3.371	.001
Job Stability	.0958	.0264	3.829	.001	.1914	.0775	3.020	.001
Controlling For Day Schooling								
Controlling For Residential Schooling								
	E ²	r ²	F	signif.	E ²	r ²	F	signif.
Job Type	.0473	.0031	0.393	---	.0964	.0367	0.937	---
Income	.0303	.0075	0.239	---	.0696	.0295	0.624	---
Length Employed	.0802	.0510	0.323	---	.0496	.0107	0.575	---
Job Stability	.0276	.0024	0.264	---	.0927	.0080	1.350	---

Table 1. Continued

	Controlling For Eastern Residence				Controlling For Western Residence			
	E ²	r ²	F	signif	E ²	r ²	F	signif
Education By:								
Job Type	.0906	.0487	1.313	---	.1769	.0711	2.537	.01
Income	.0479	.0000	1.976	---	.1103	.0444	1.750	---
Length Employed	.1458	.1104	1.627	---	.1123	.0056	2.339	.001
Job Stability	.0793	.0097	2.923	.001	.0414	.0414	2.579	.01

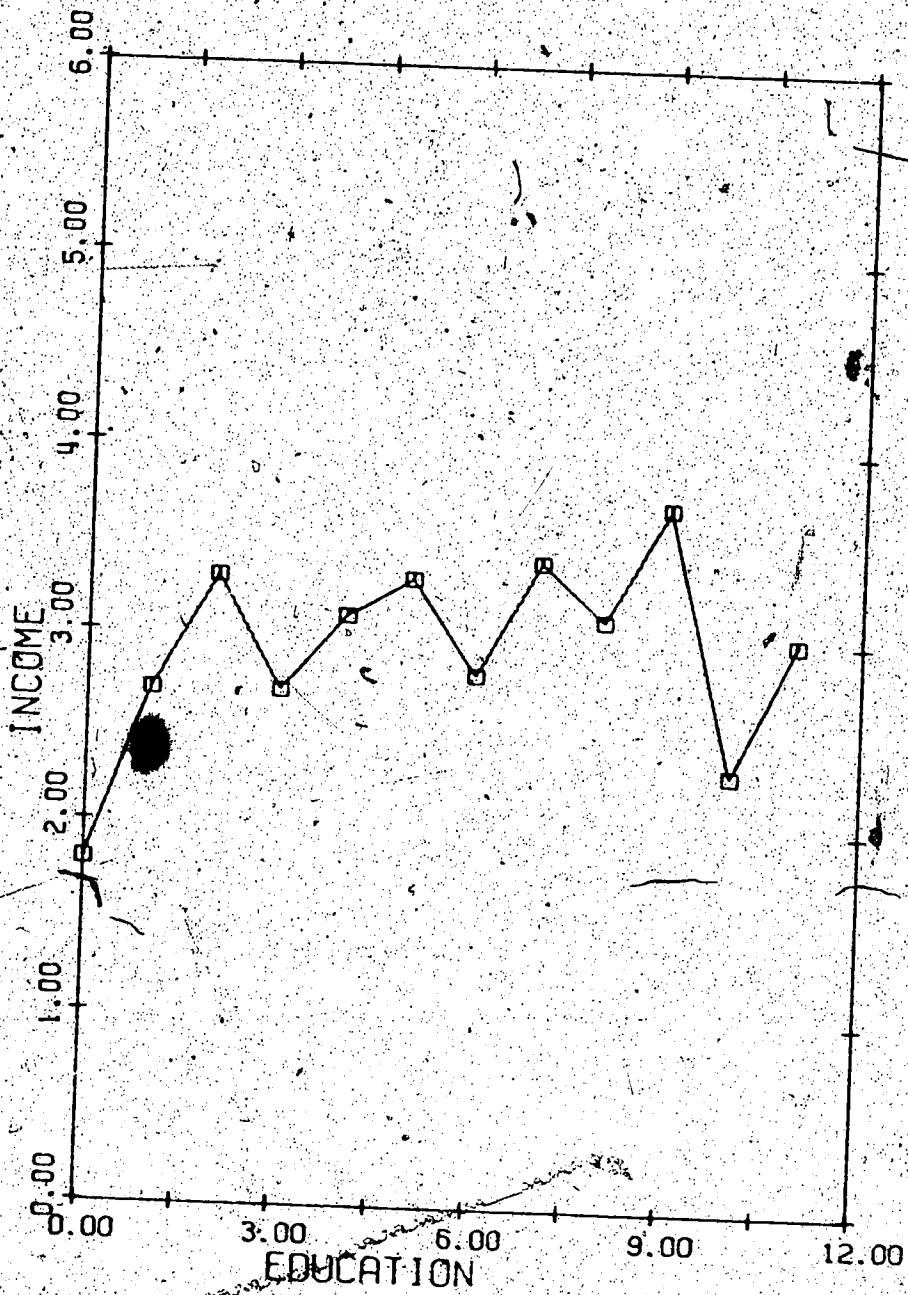


FIGURE 1 EDUCATION BY INCOME
CONTROLLING FOR AGES 18 TO 24 YEARS

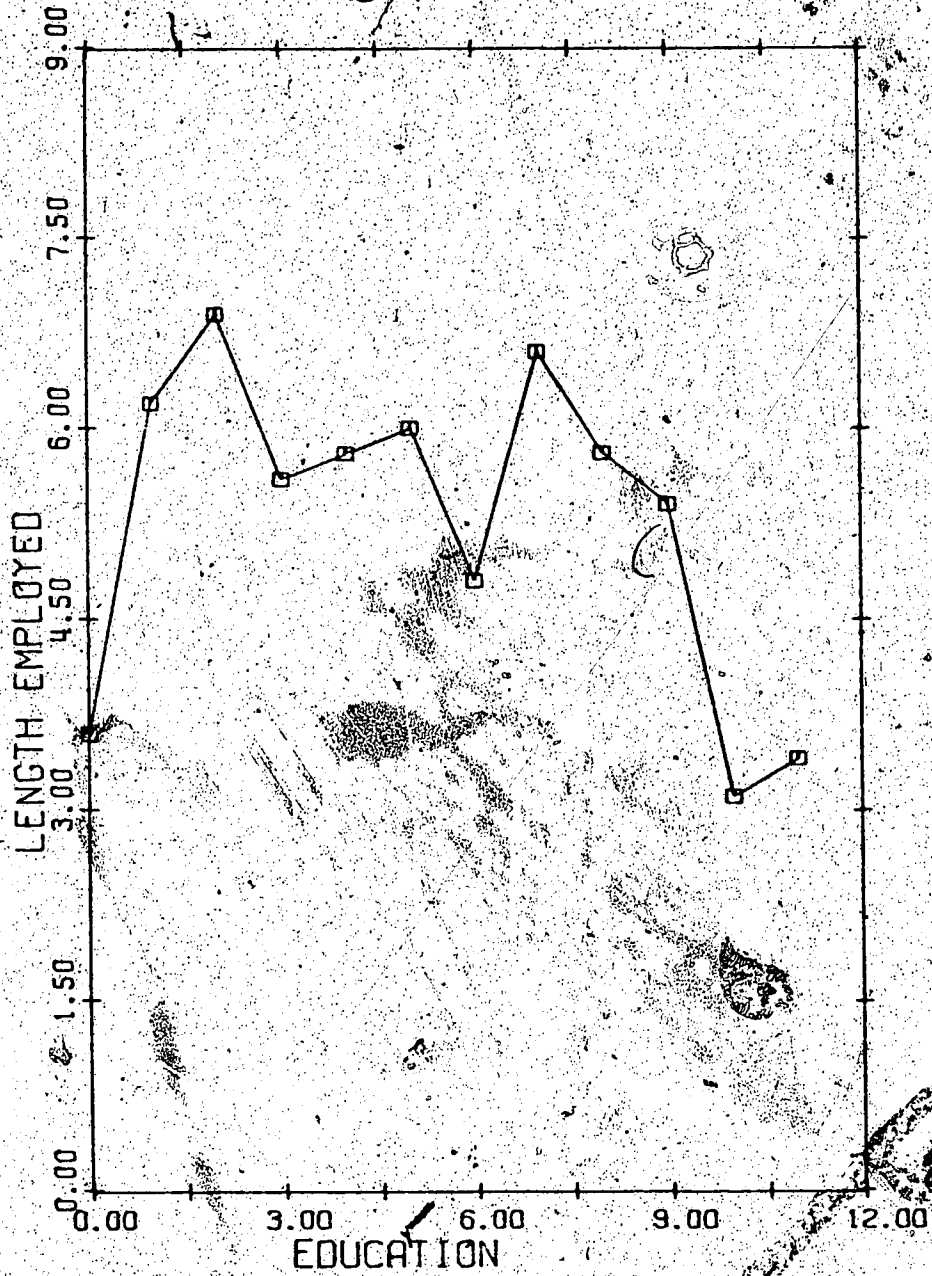


FIGURE 2 EDUCATION BY LENGTH EMPLOYED CONTROLLING FOR AGES 18 TO 24 YEARS

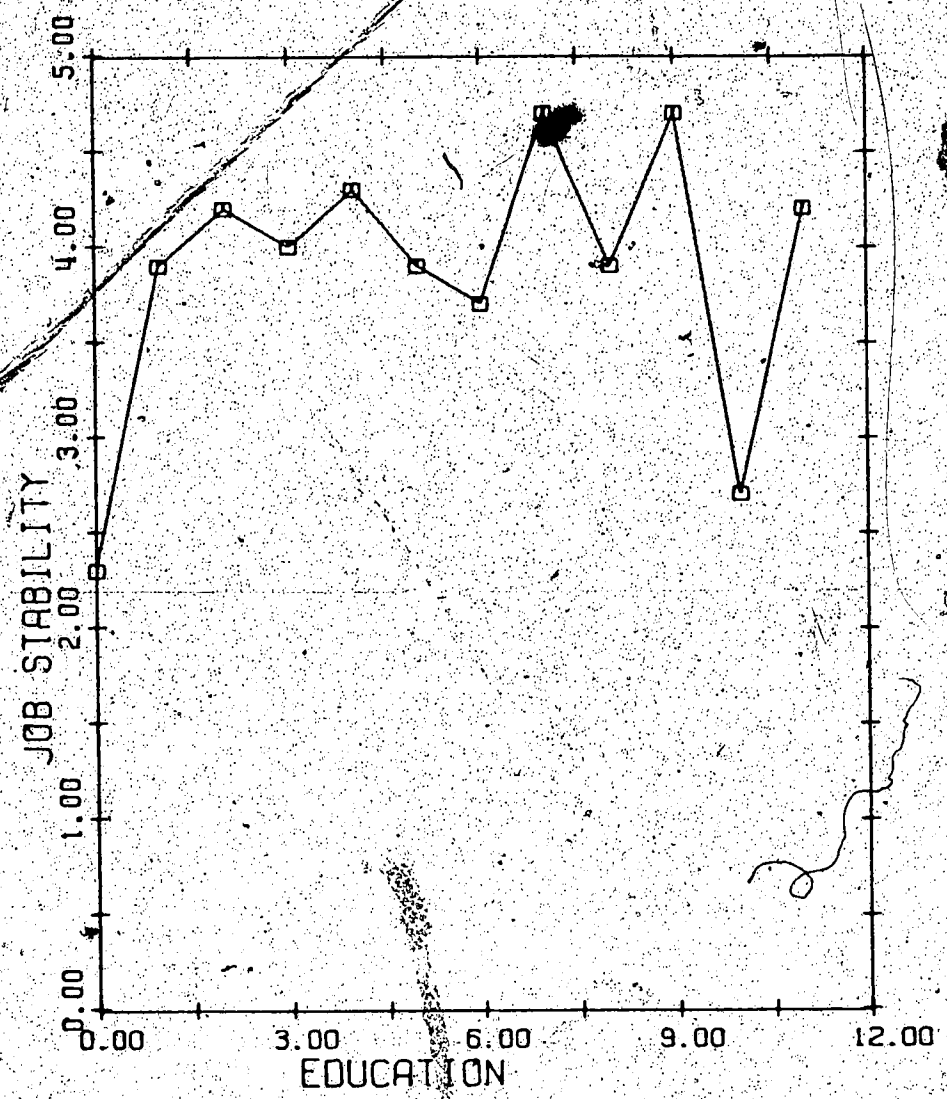


FIGURE 3 EDUCATION BY JOB STABILITY,
CONTROLLING FOR AGES 18 TO 24 YEARS

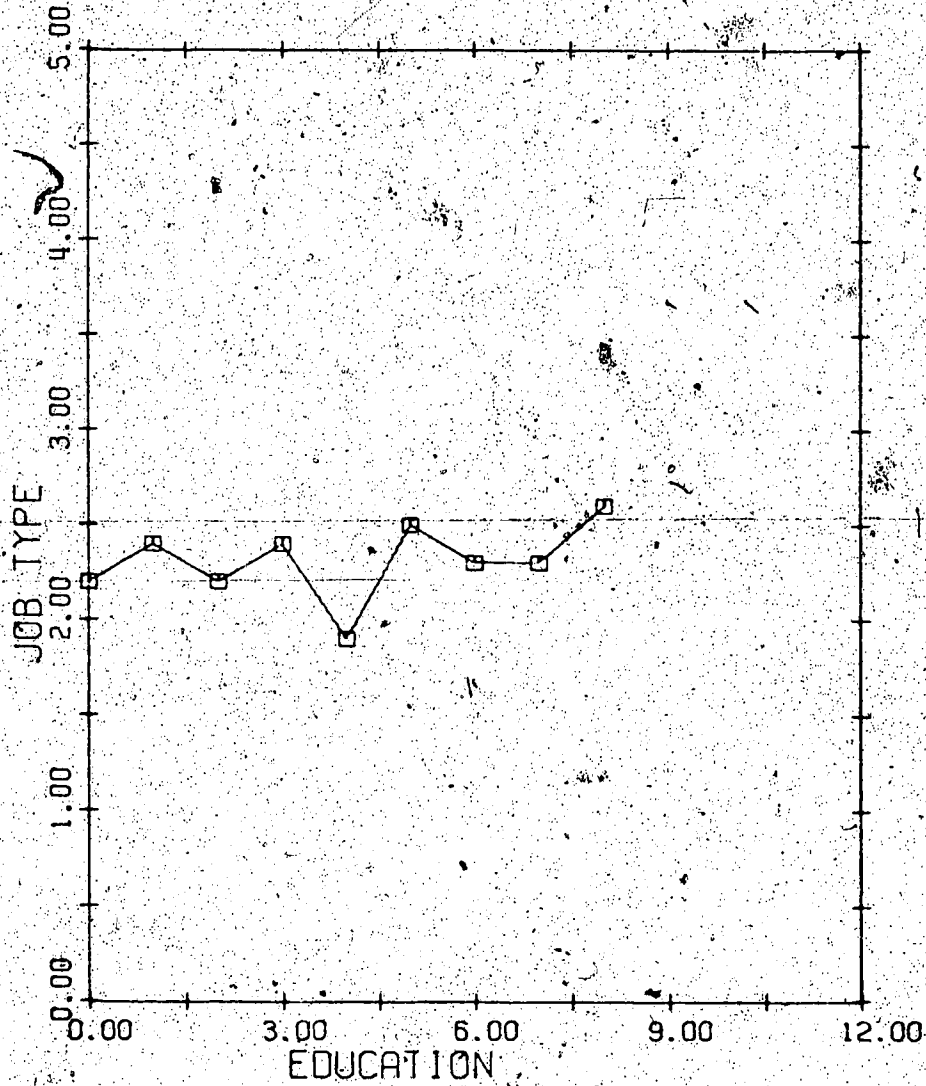


FIGURE 4 EDUCATION BY JOB TYPE
CONTROLLING FOR AGES 25 TO 39 YEARS

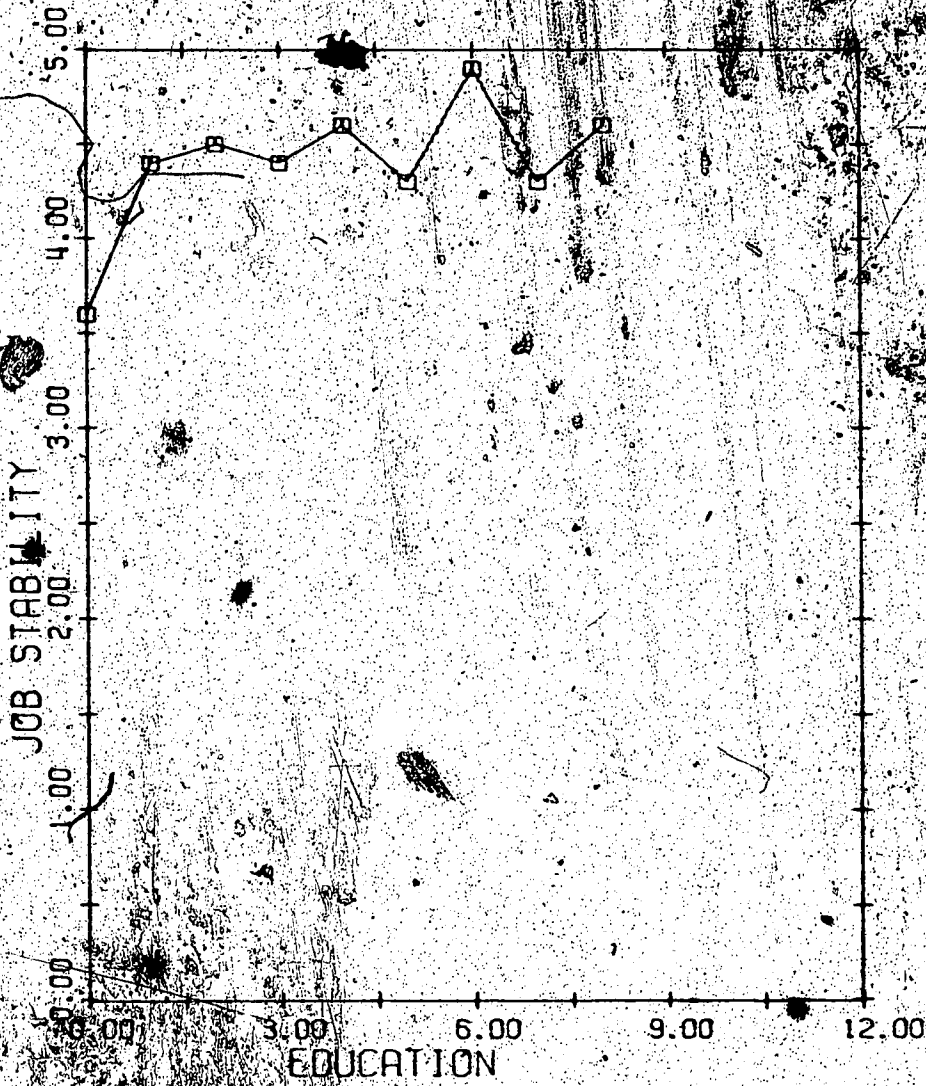


FIGURE 5 EDUCATION BY JOB STABILITY
CONTROLLING FOR AGES 25 TO 39 YEARS

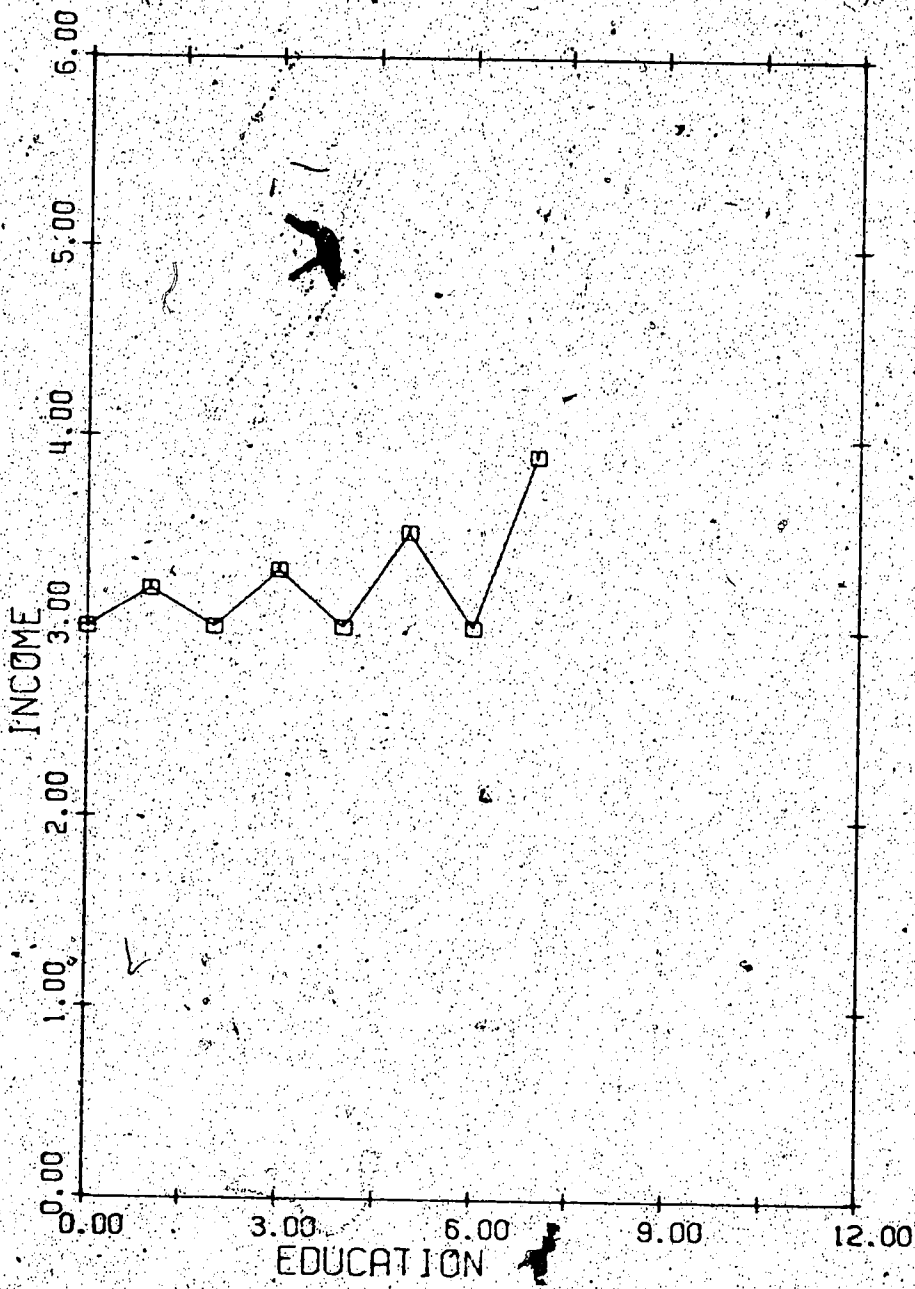


FIGURE 6 EDUCATION BY INCOME
CONTROLLING FOR BILINGUALISM



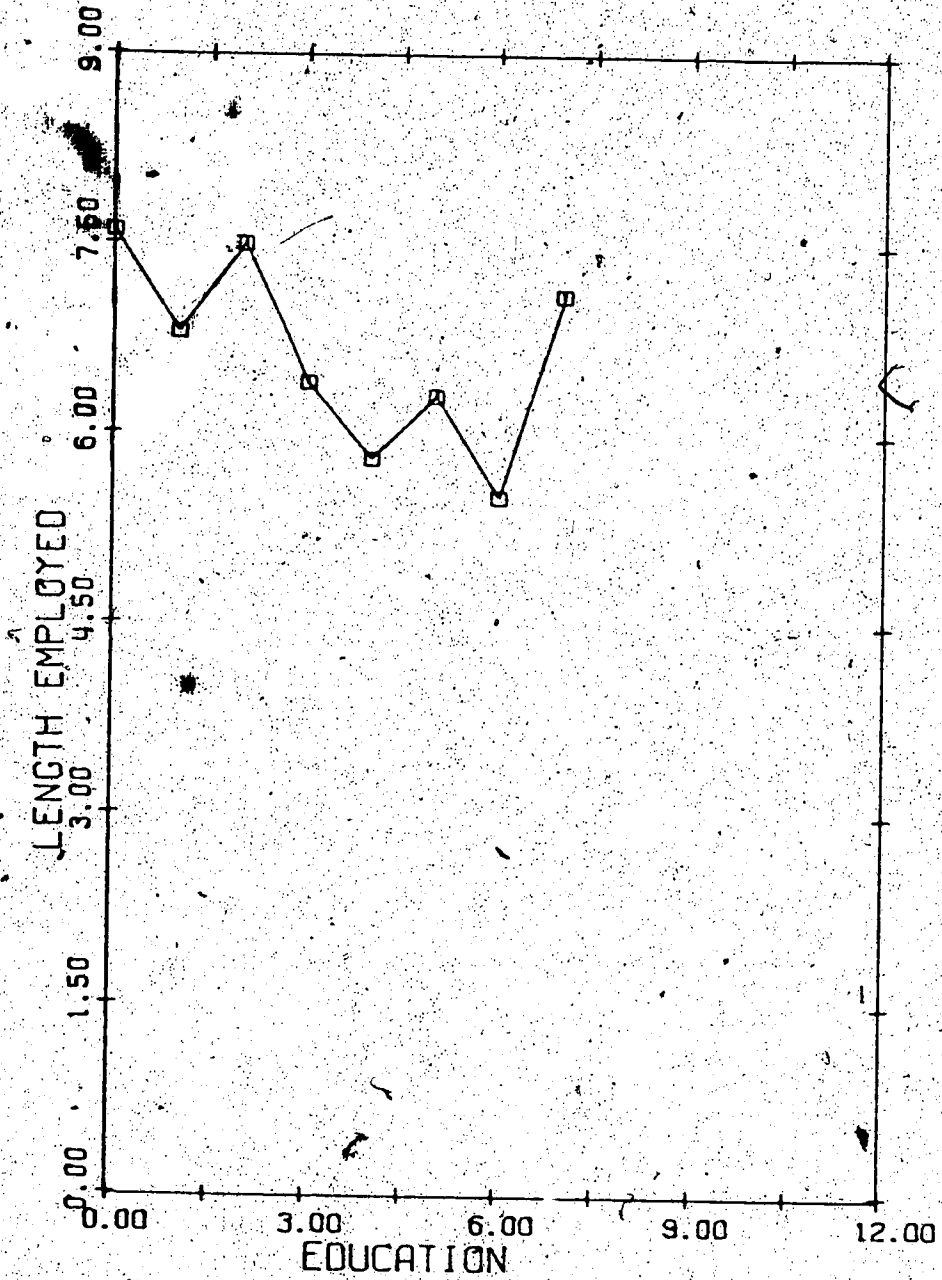


FIGURE 7 EDUCATION BY LENGTH EMPLOYED
CONTROLLING FOR BILINGUALISM

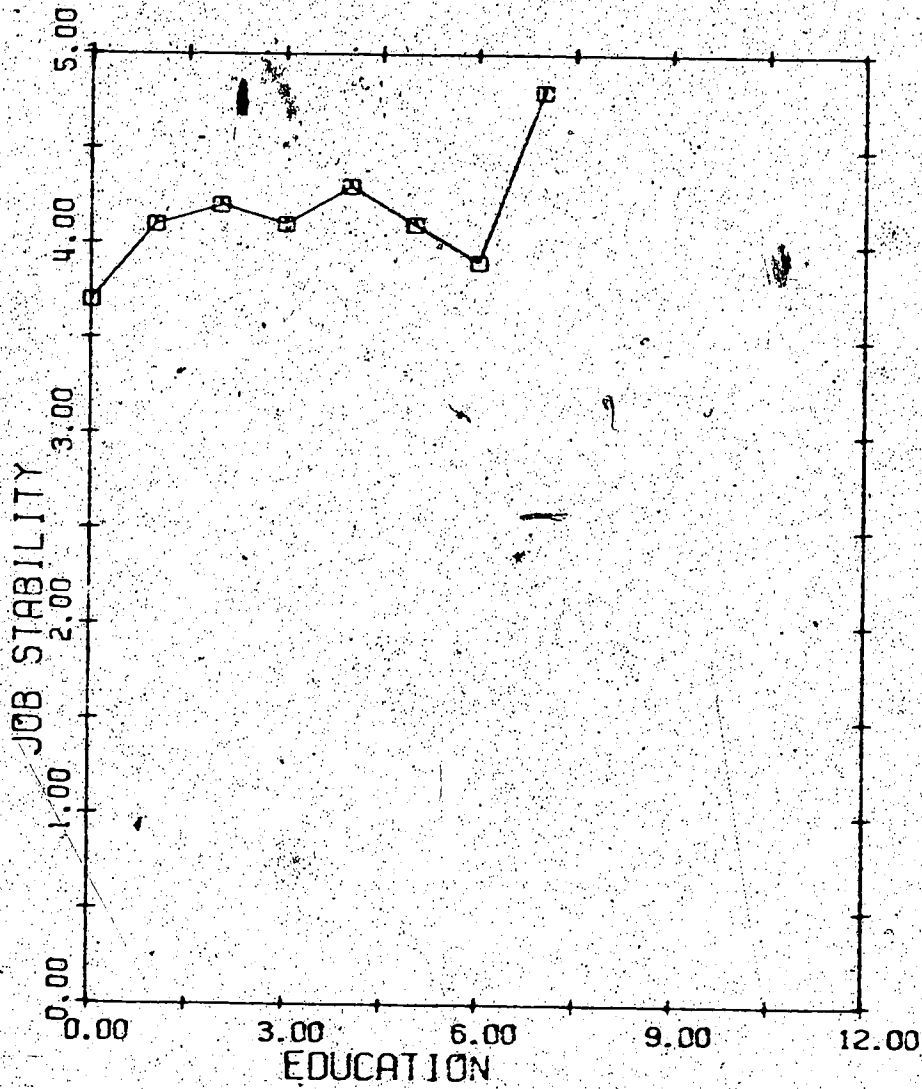


FIGURE 8 EDUCATION BY JOB STABILITY
CONTROLLING FOR BILINGUALISM

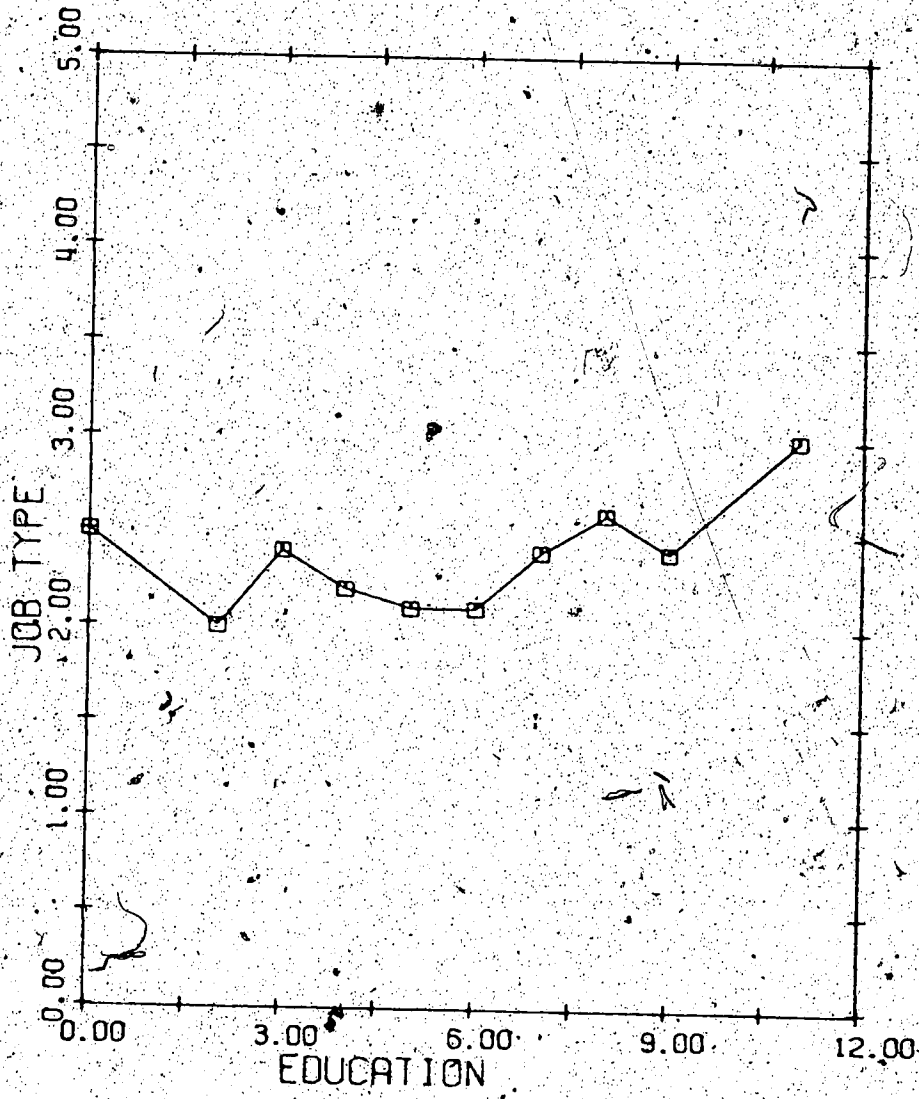


FIGURE 9 EDUCATION BY JOB TYPE
CONTROLLING FOR NON-BILINGUALISM

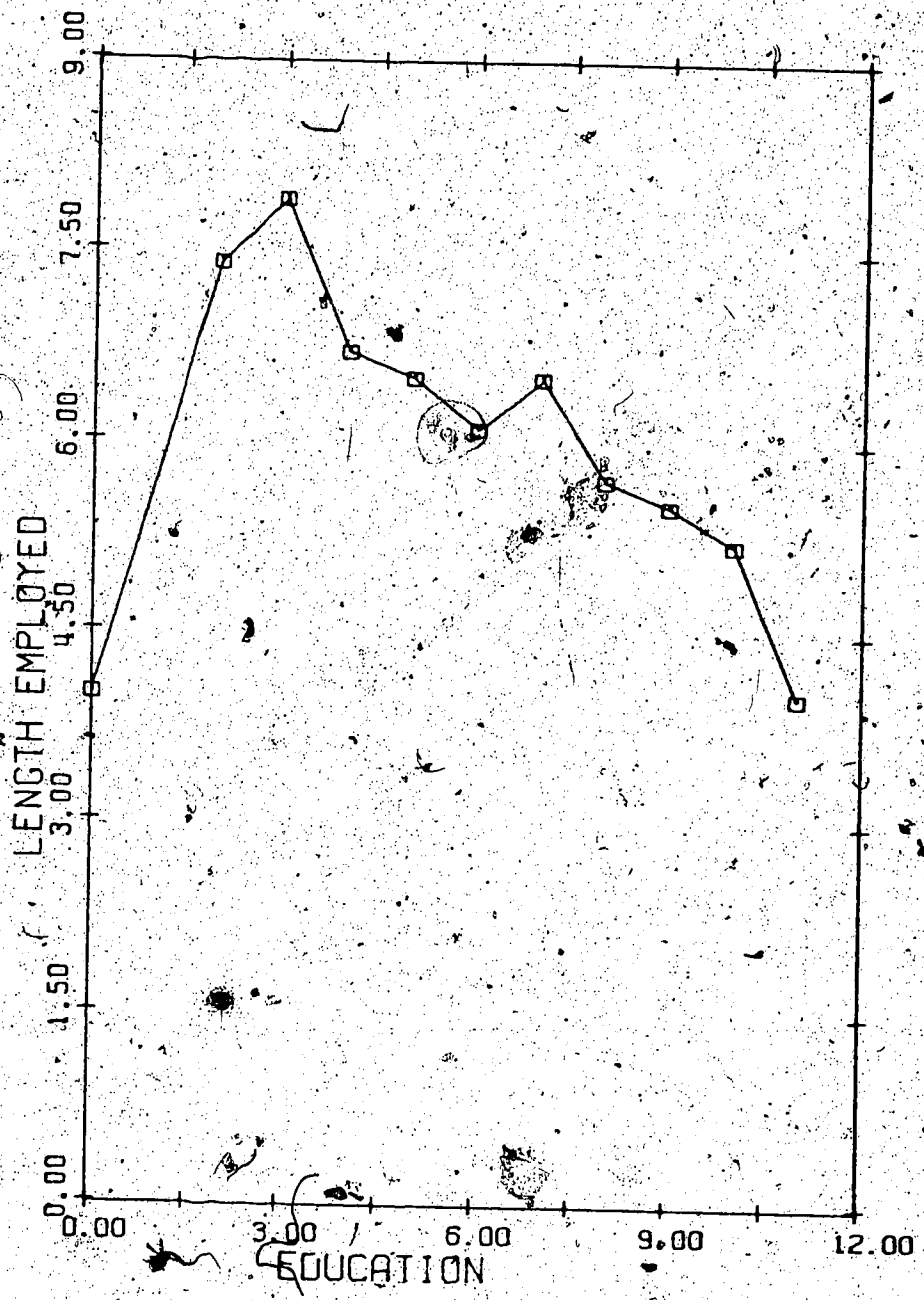


FIGURE 10 EDUCATION BY LENGTH EMPLOYED
CONTROLLING FOR NON-BILINGUALISM

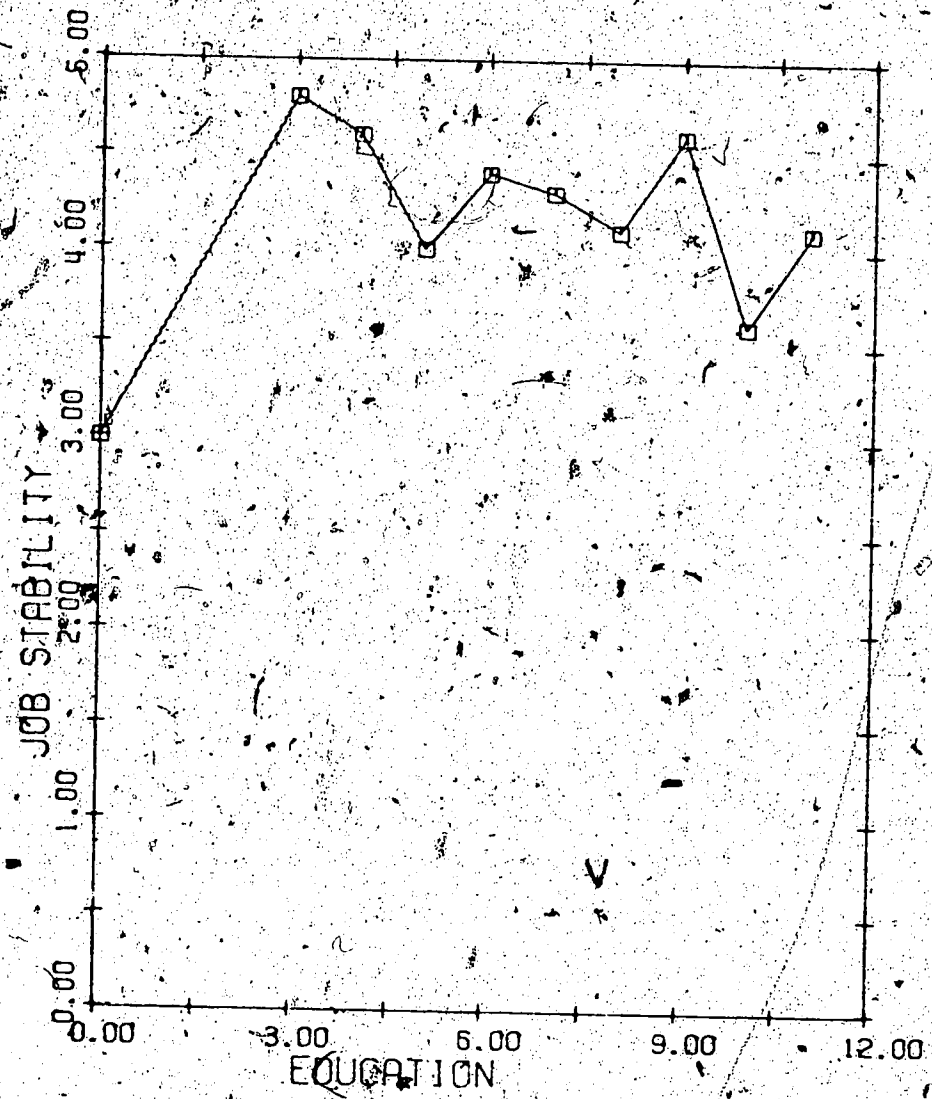


FIGURE 11 EDUCATION BY JOB STABILITY
CONTROLLING FOR NON-BILINGUALISM

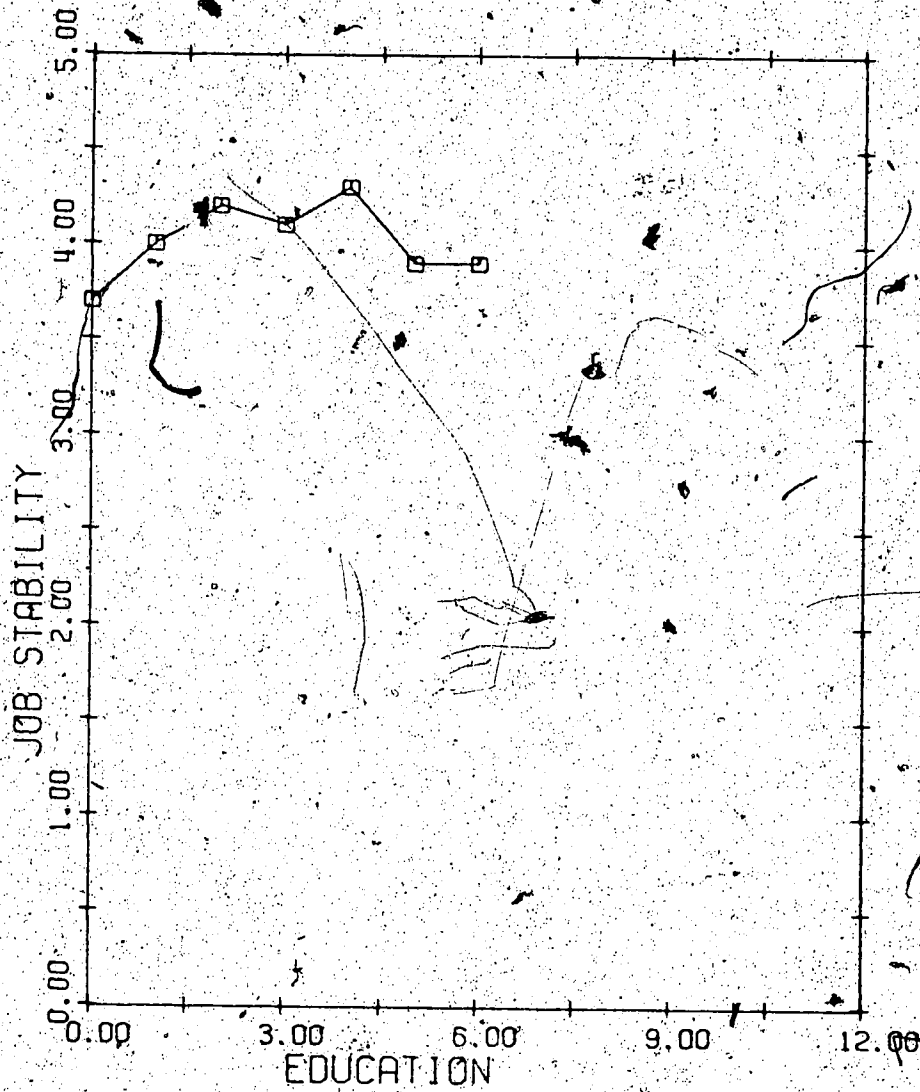


FIGURE 12 EDUCATION BY JOB STABILITY CONTROLLING FOR EAST PRE-SCHOOL RESID.

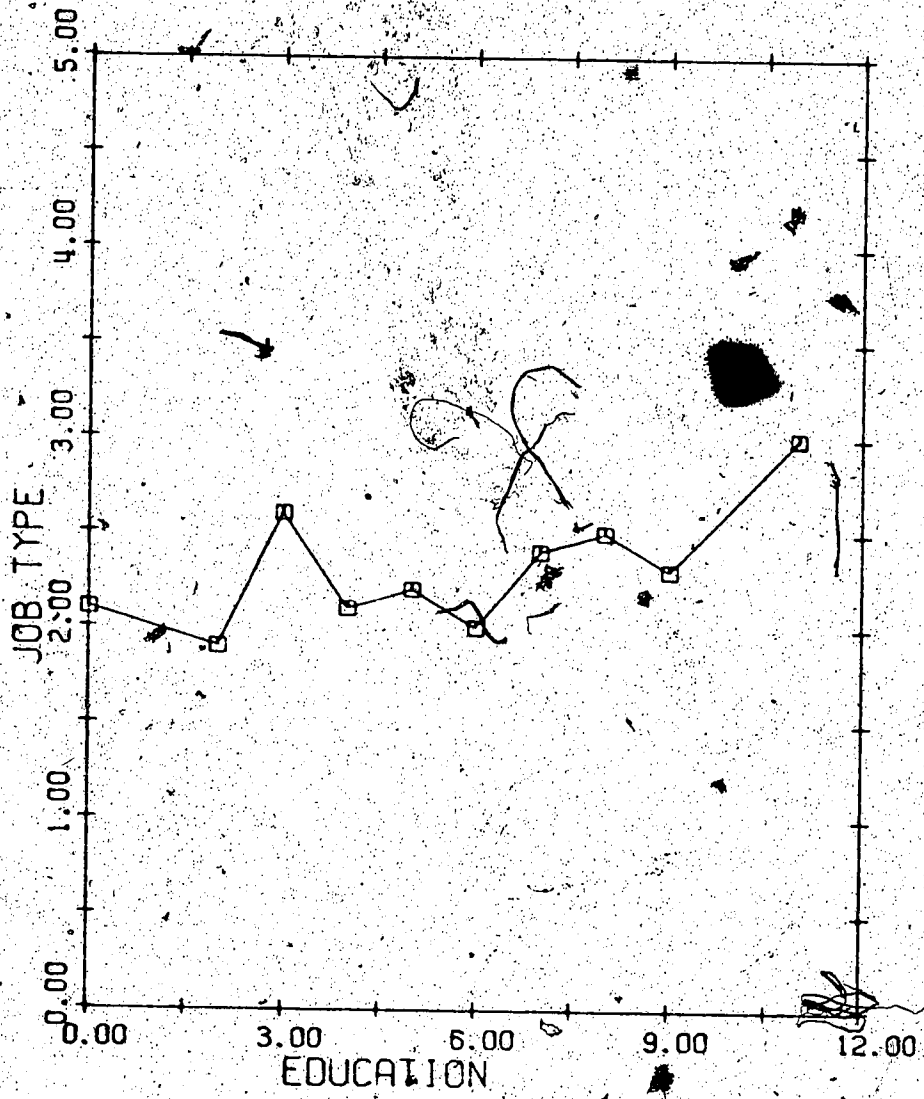


FIGURE 13 EDUCATION BY JOB TYPE
CONTROLLING FOR WEST PRE-SCHOOL RESID.

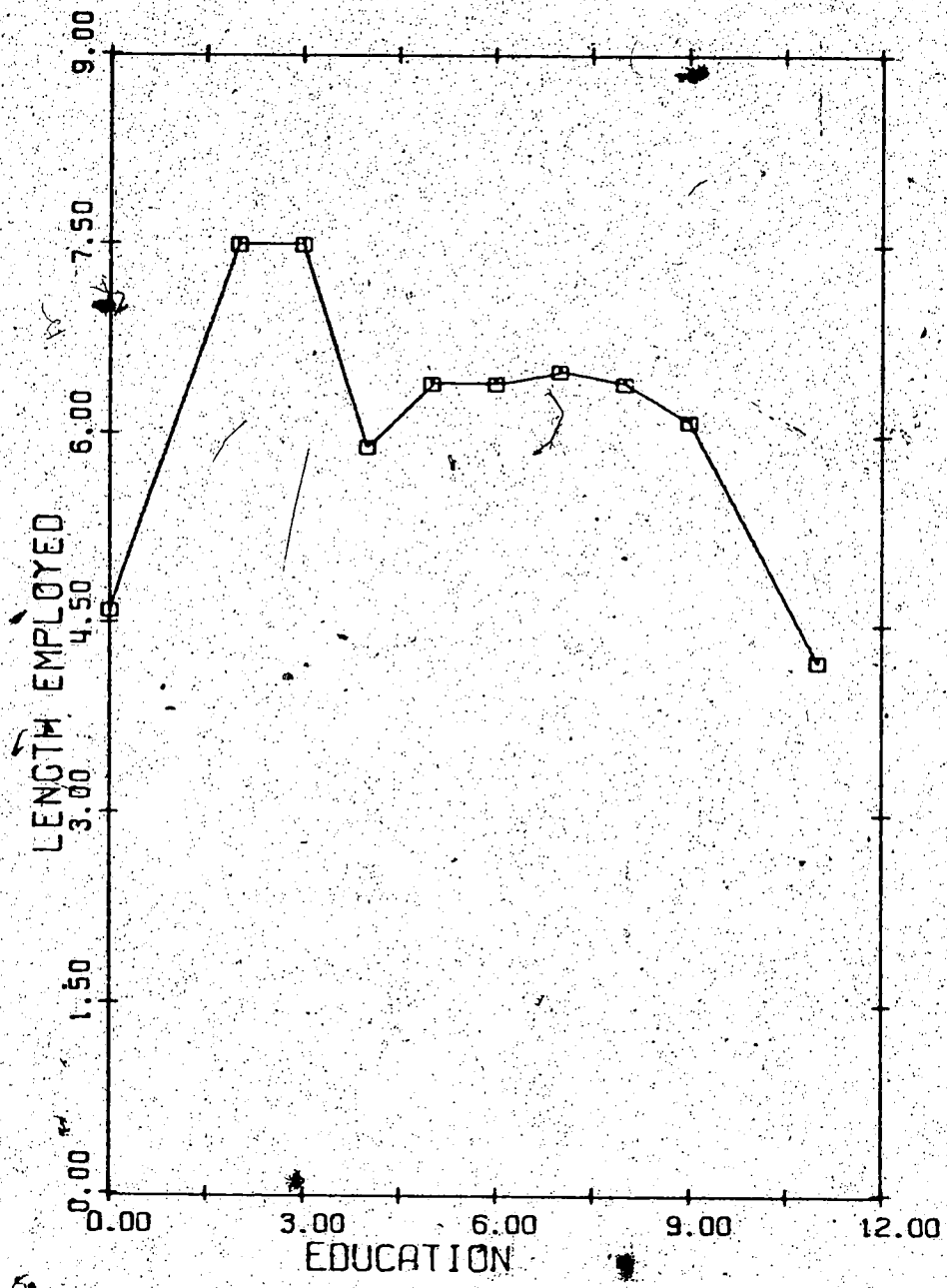


FIGURE 14 EDUCATION BY LENGTH EMPLOYED CONTROLLING FOR WEST PRE-SCHOOL RESID.

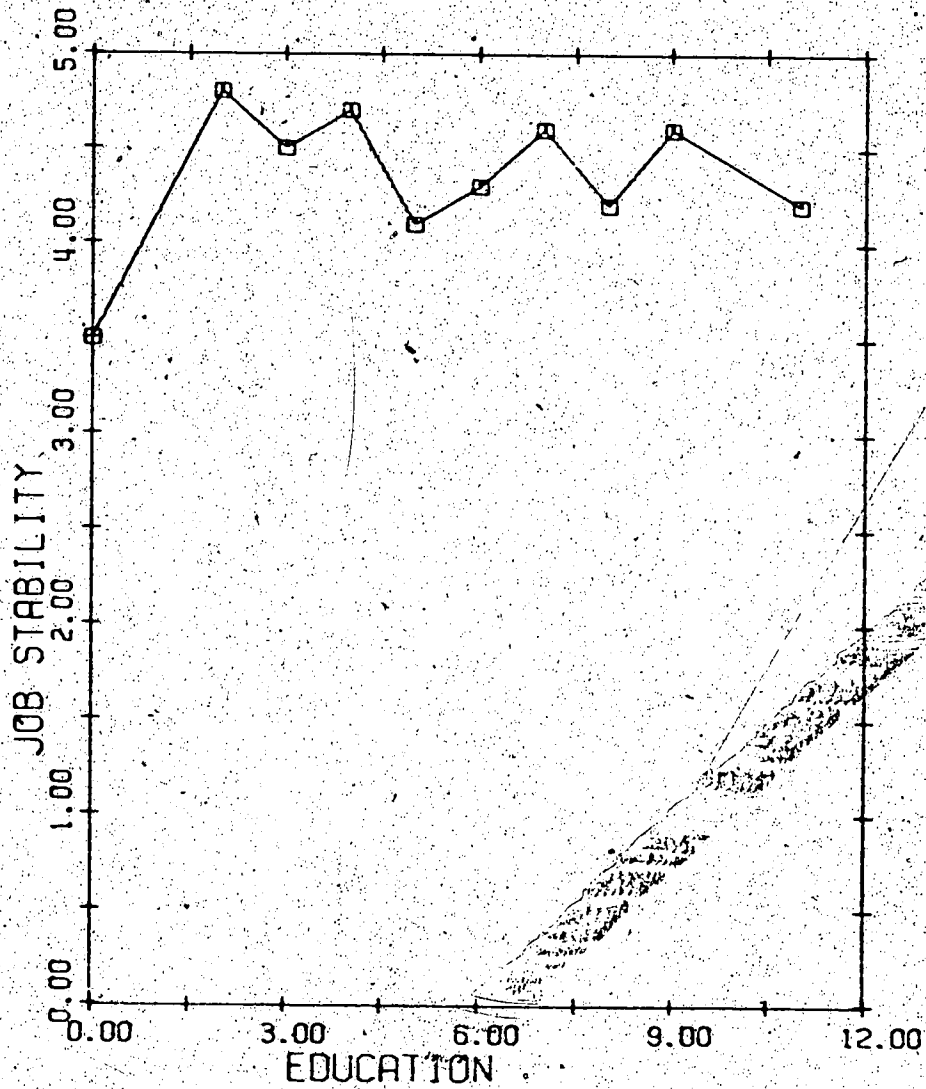


FIGURE 15 EDUCATION BY JOB STABILITY CONTROLLING FOR WEST PRE-SCHOOL RESID.

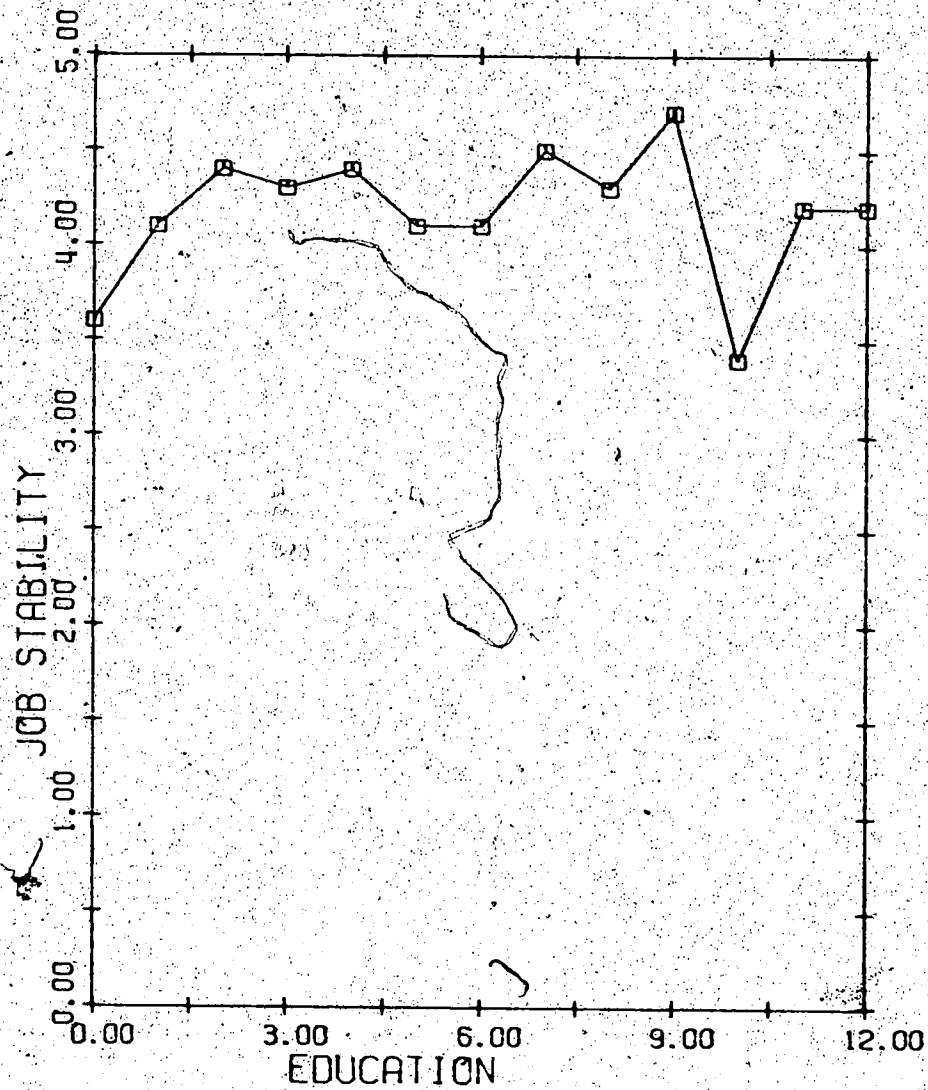


FIGURE 16 EDUCATION BY JOB STABILITY

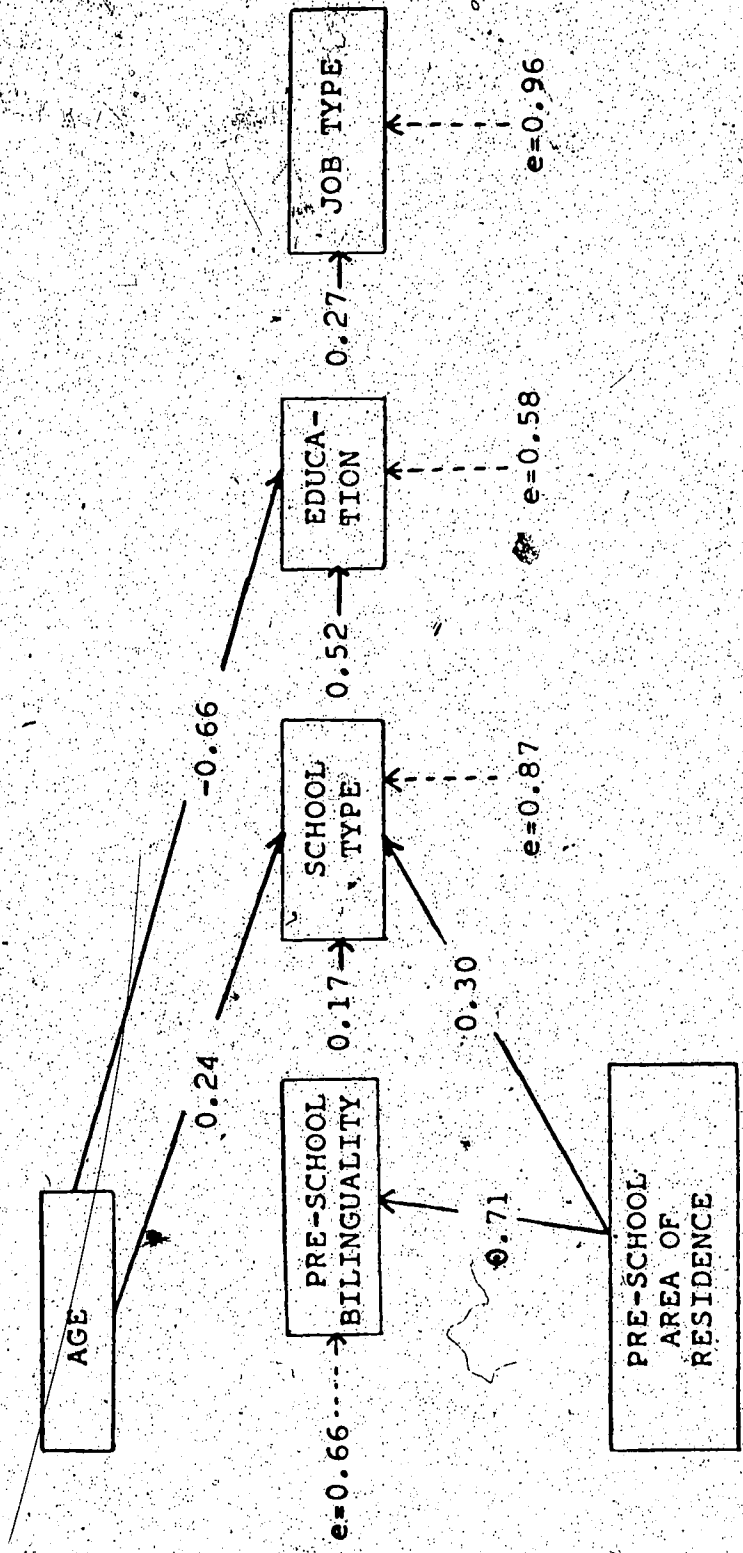


FIGURE 17. PATH MODEL EMPLOYING JOB TYPE AS DEPENDENT VARIABLE INDICATOR

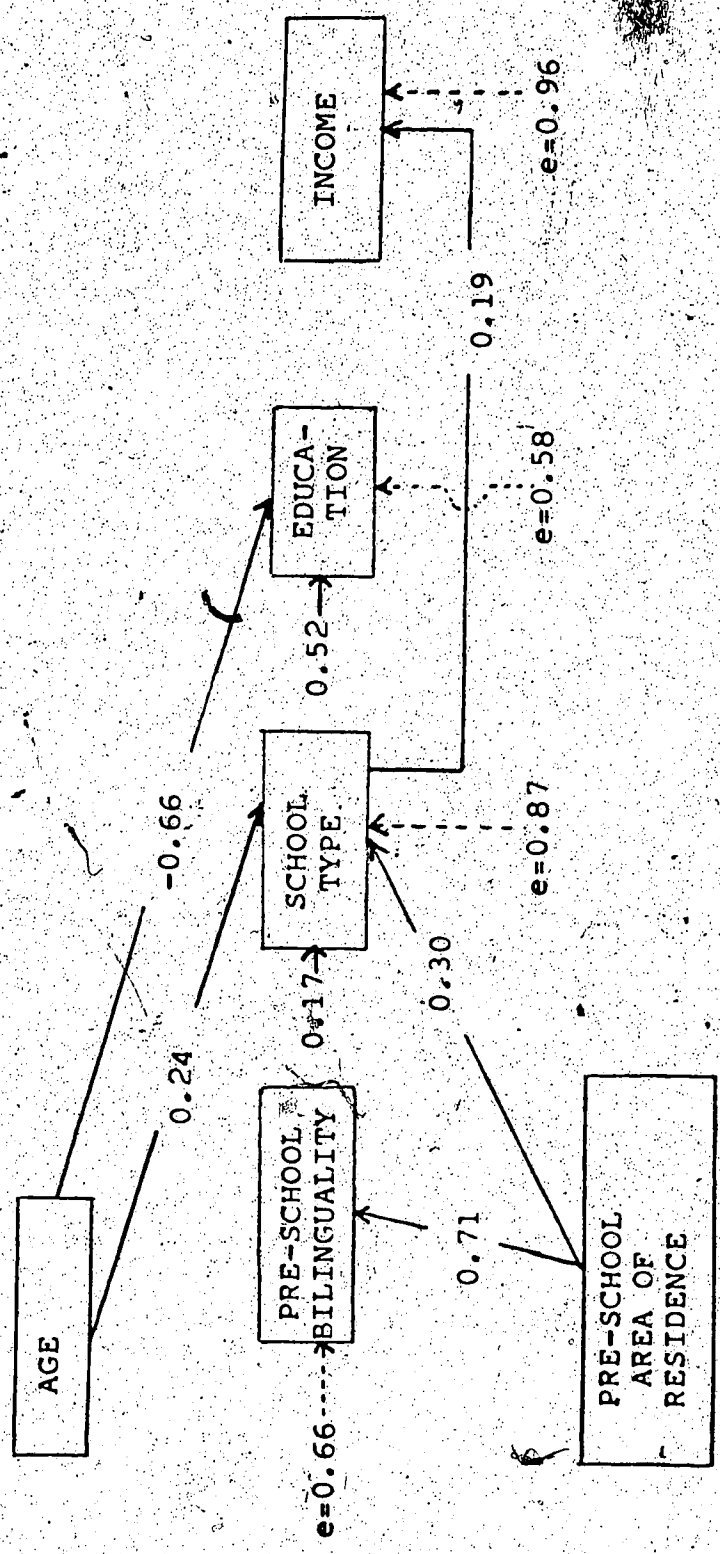


FIGURE 18. PATH MODEL EMPLOYING INCOME AS DEPENDENT VARIABLE INDICATOR

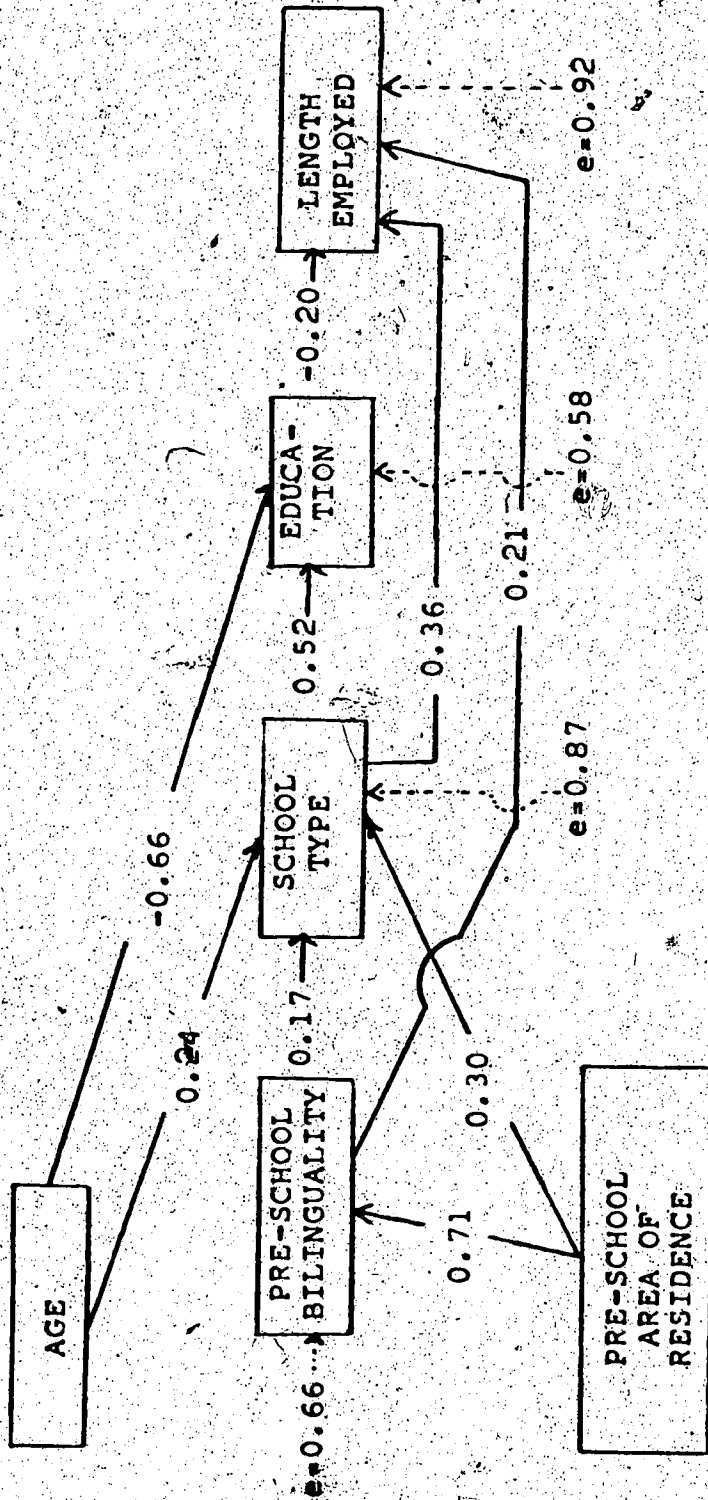


FIGURE 19. PATH MODEL EMPLOYING LENGTH EMPLOYED AS DEPENDENT VARIABLE INDICATOR

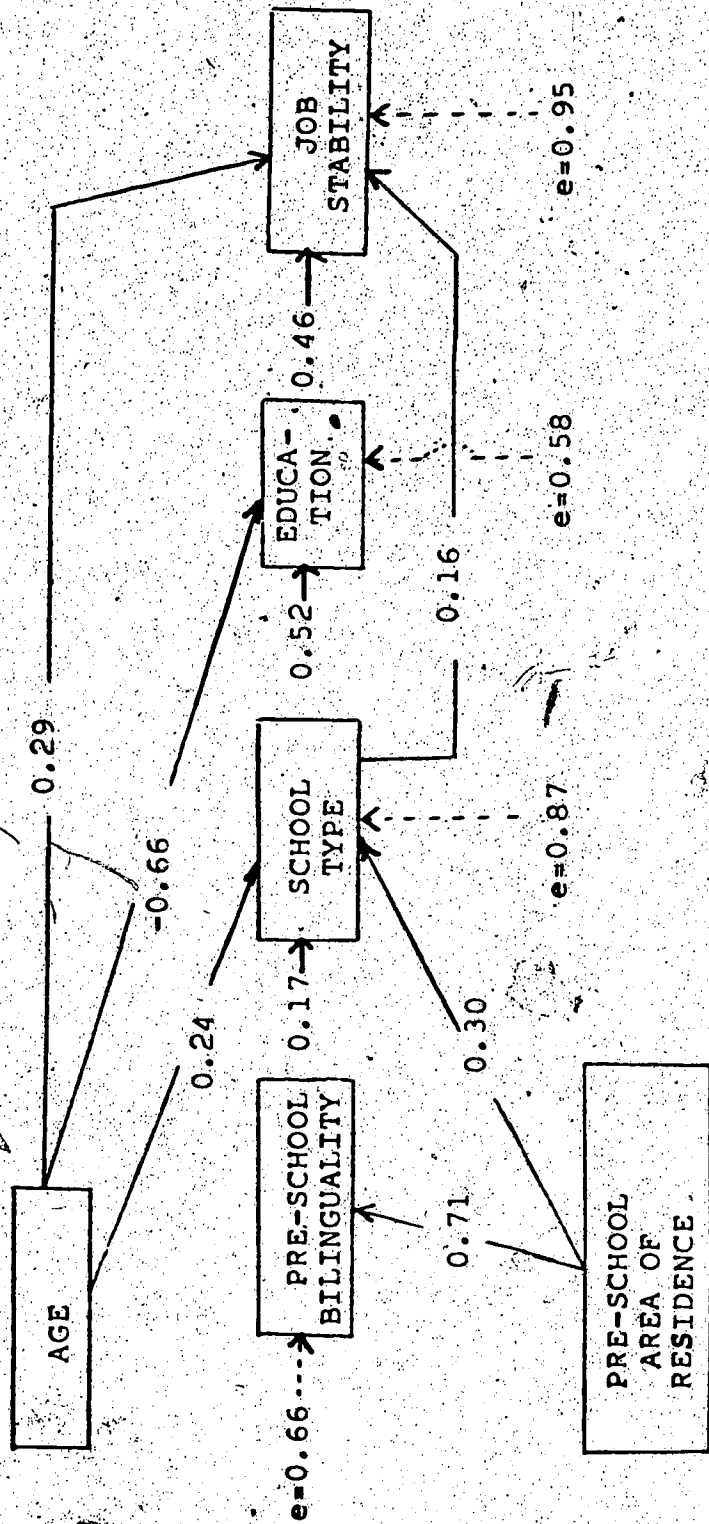


FIGURE 20. PATH MODEL EMPLOYING JOB STABILITY AS DEPENDENT VARIABLE INDICATOR

Table 1. Continued

	Controlling For Bilingualism				Controlling For Non-Bilingualism				
	E ²	r ²	F	signif.	E ²	r ²	F	signif.	
Education By:									
Job Type	.0690	.0431	1.338	---	.1892	.1410	3.024	.001	
Income	.0569	.0045	2.774	.001	.1134	.0396	1.787	---	
Length Employed	.1043	.0661	2.129	.01	.1462	.0121	3.371	.001	
Job Stability	.0958	.0264	3.829	.001	.1914	.0775	3.020	.001	
		Controlling For Day Schooling				Controlling For Residential Schooling			
	E ²	r ²	F	signif.	E ²	r ²	F	signif.	
Job Type	.0473	.0031	0.393	---	.0964	.0367	0.937	---	
Income	.0303	.0075	0.239	---	.0696	.0295	0.624	---	
Length Employed	.0802	.0510	0.323	---	.0456	.0107	0.575	---	
Job Stability	.0276	.0024	0.264	---	.0927	.0080	1.350	---	

Table 1. Continued

	Controlling For Eastern Residence				Controlling For Western Residence			
	E ²	r ²	F	signif	E ²	r ²	F	signif
Education By:								
Job Type	.0906	.0487	1.313	---	.0711	.0411	2.537	.01
Income	.0479	.0000	1.976	---	.1103	.0444	1.750	---
Length Employed	.1450	.1104	1.627	---	.1123	.0056	2.939	.001
Job Stability	.0783	.0097	2.923	.001	.1354	.0414	2.570	.01

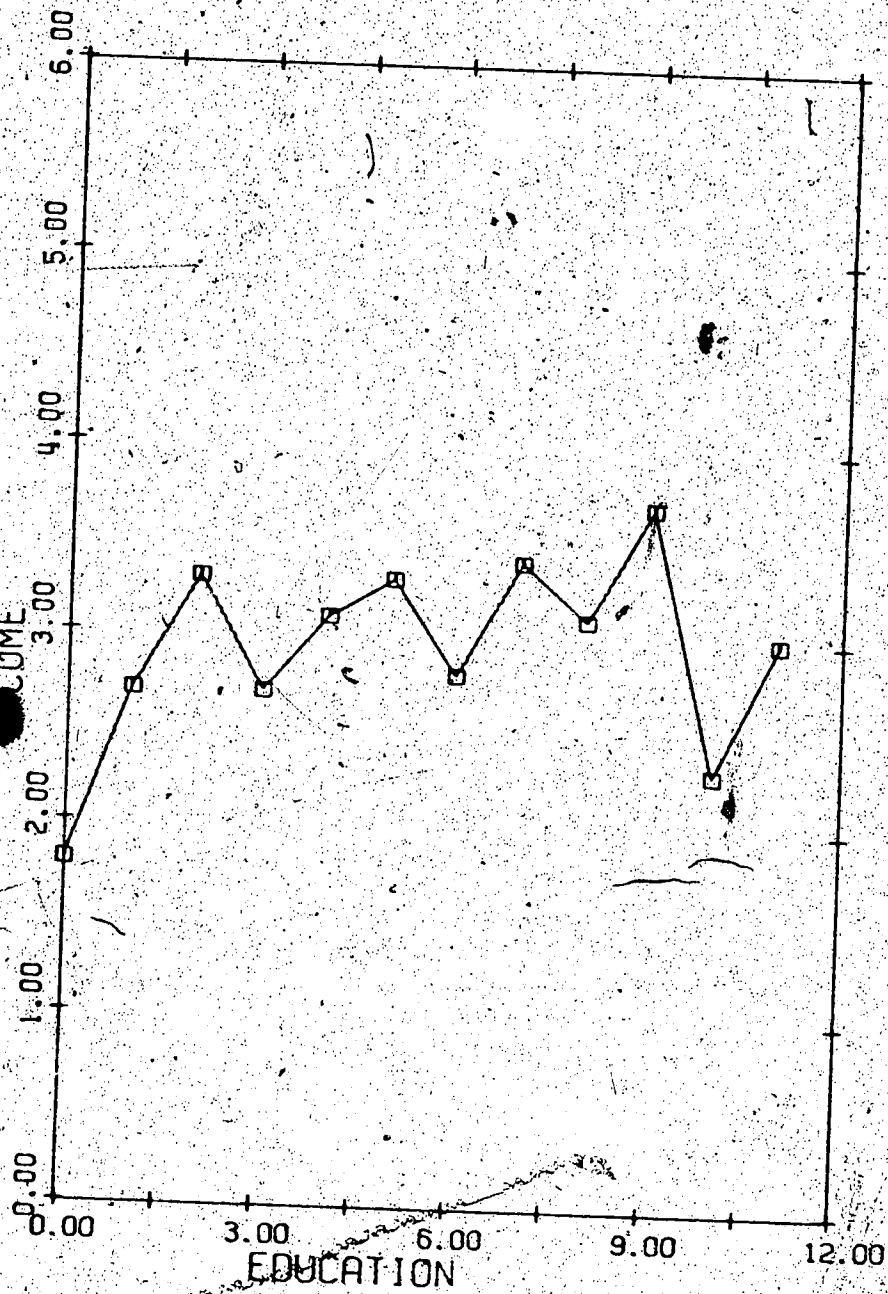


FIGURE 1 EDUCATION BY INCOME
CONTROLLING FOR AGES 18 TO 24 YEARS

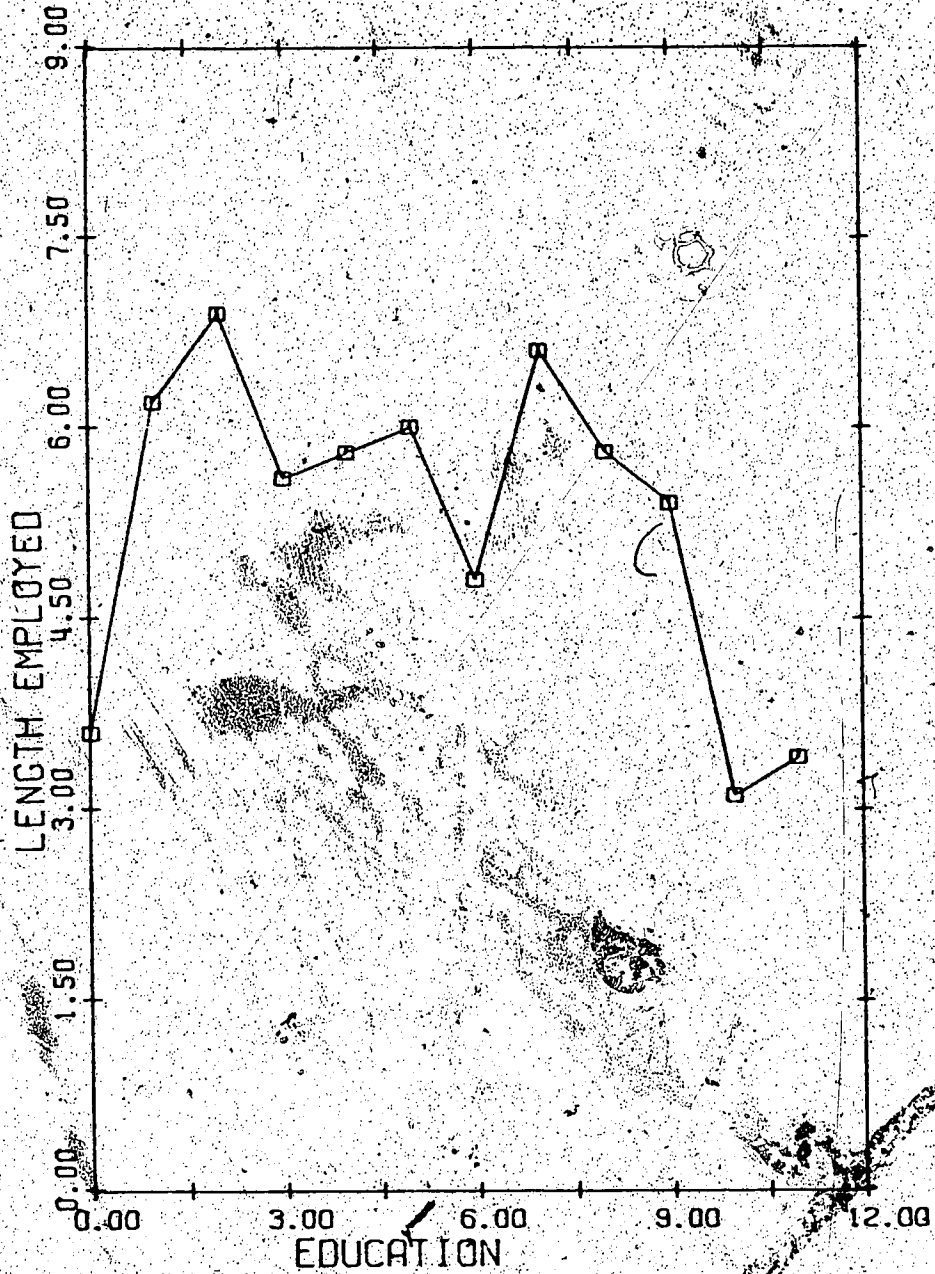


FIGURE 2 EDUCATION BY LENGTH EMPLOYED
CONTROLLING FOR AGES 18 TO 24 YEARS

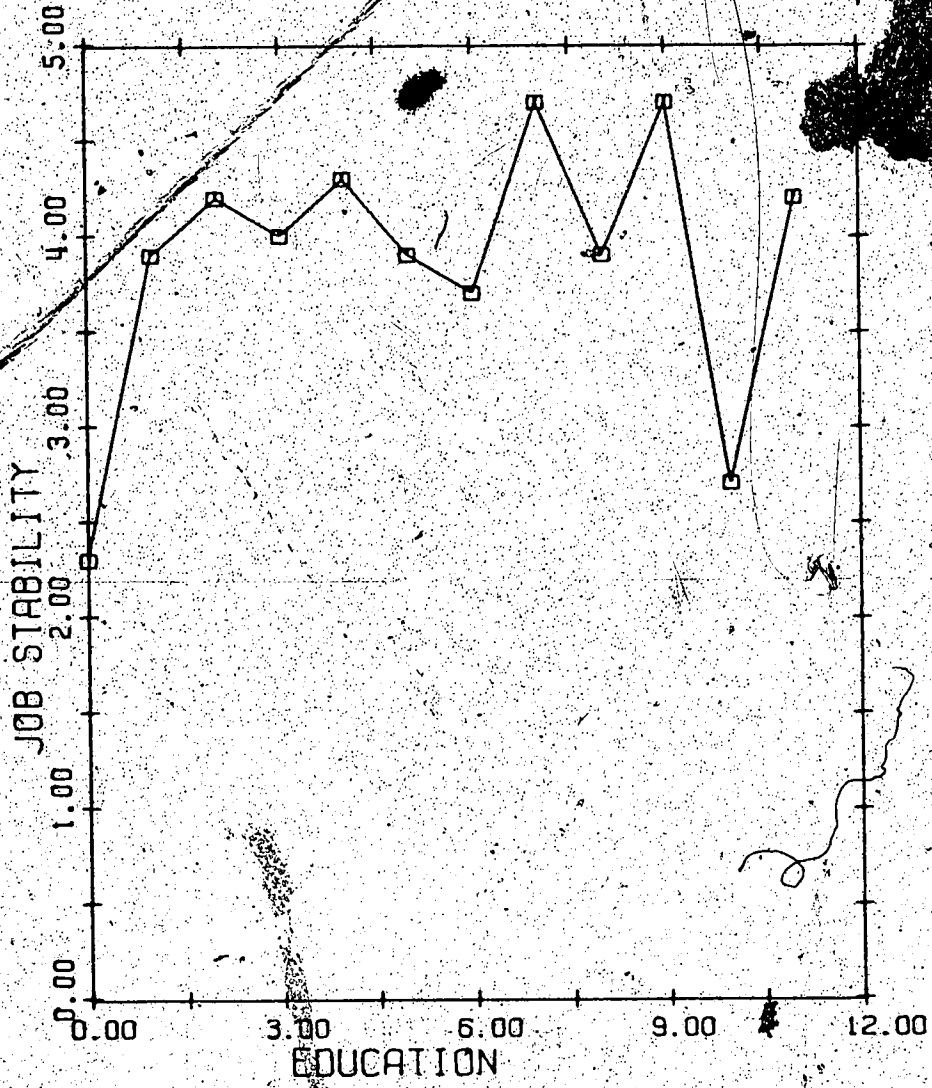


FIGURE 3 EDUCATION BY JOB STABILITY CONTROLLING FOR AGES 18 TO 24 YEARS

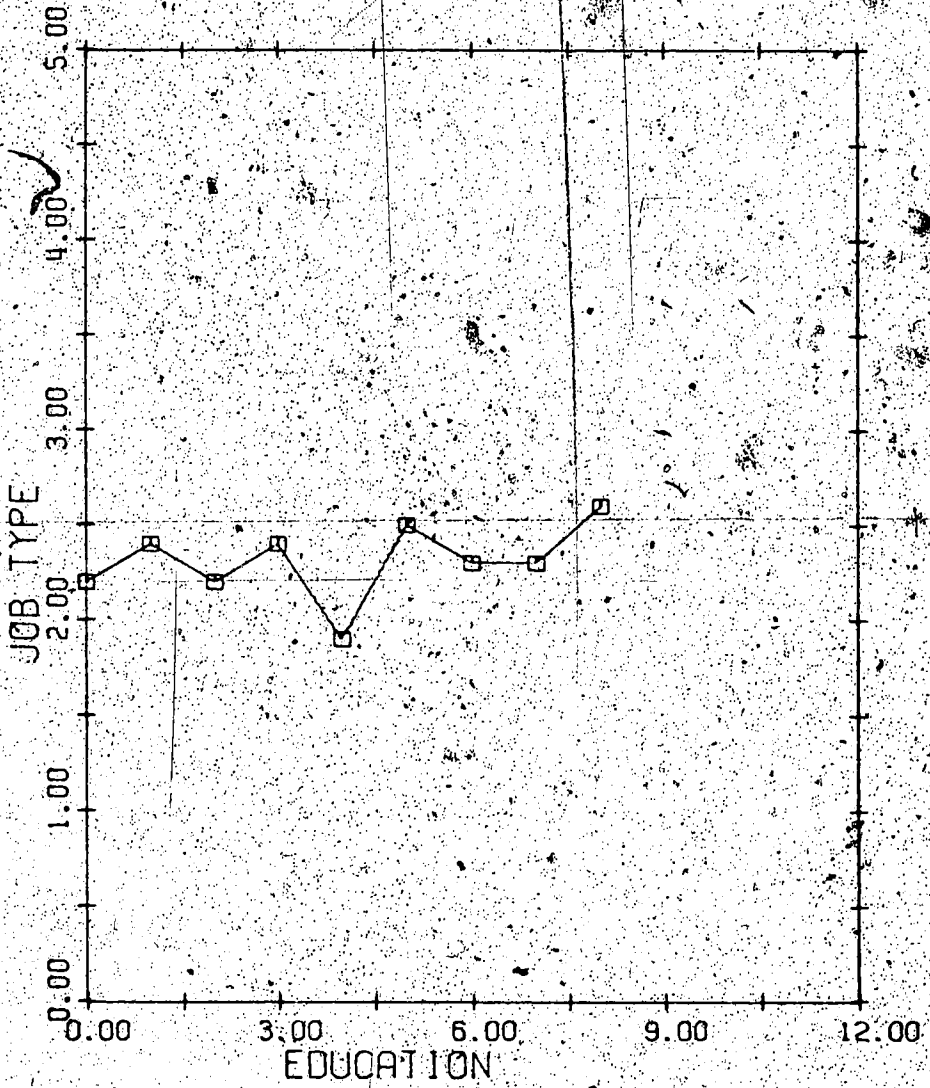


FIGURE 4 EDUCATION BY JOB TYPE
CONTROLLING FOR AGES 25 TO 39 YEARS

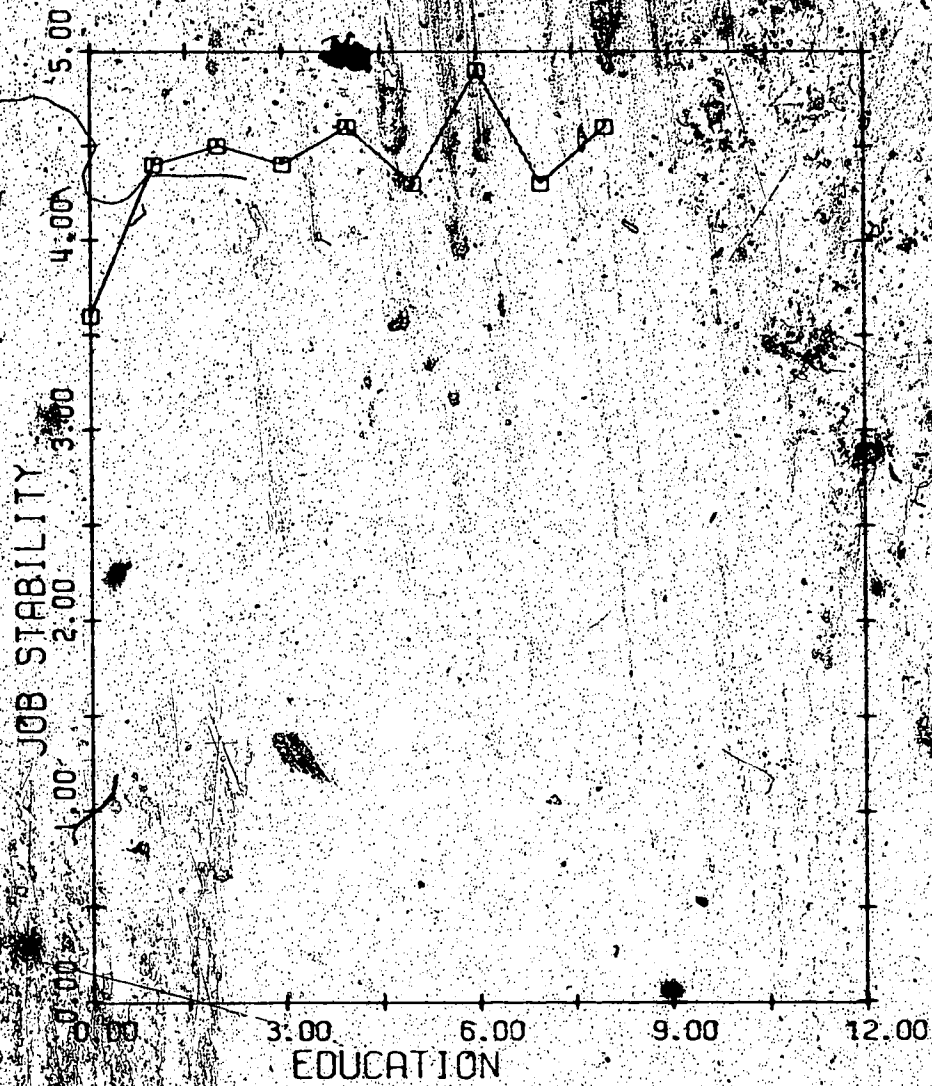


FIGURE 5 EDUCATION BY JOB STABILITY CONTROLLING FOR AGES 25 TO 39 YEARS

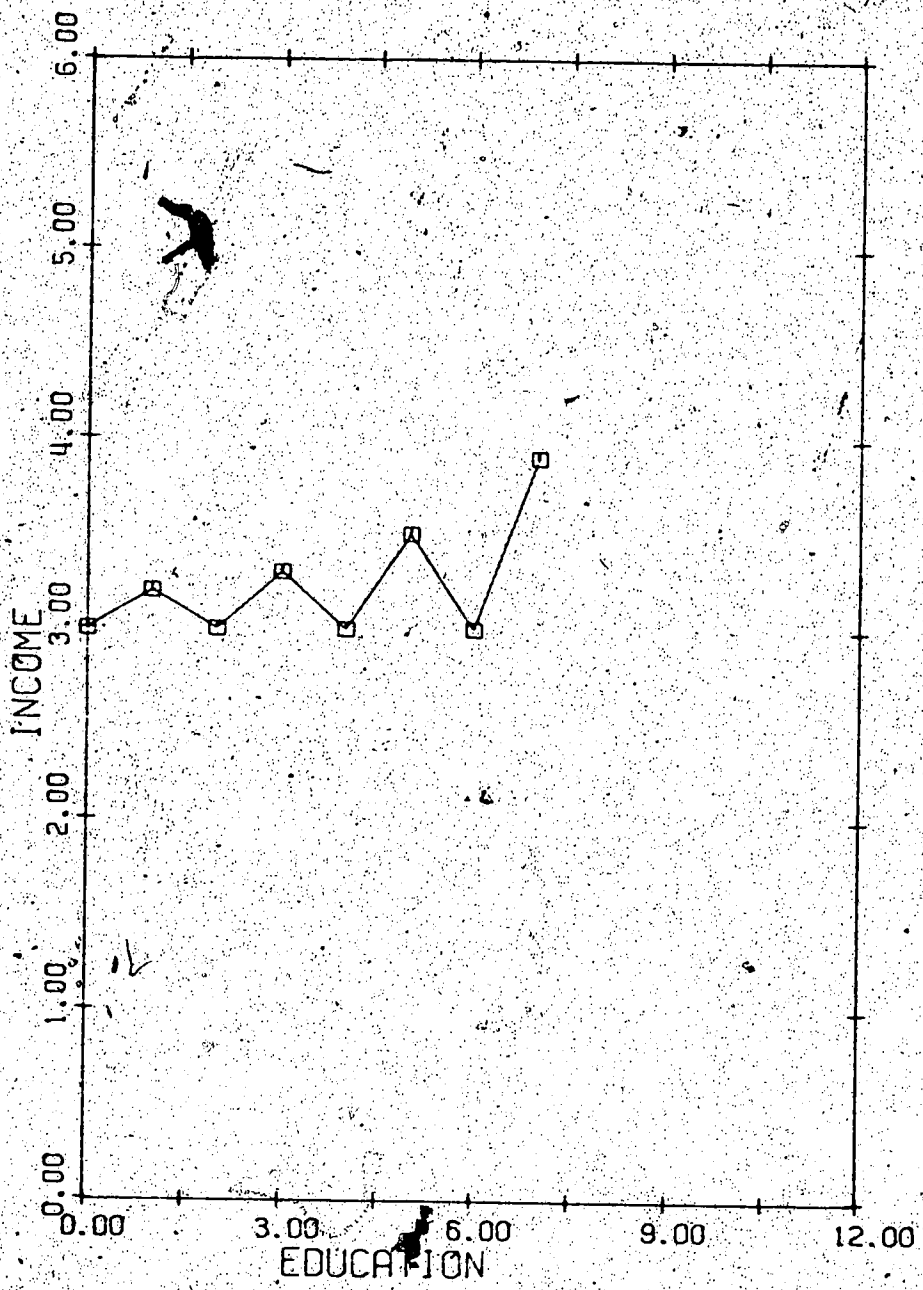


FIGURE 6 EDUCATION BY INCOME
CONTROLLING FOR BILINGUALISM

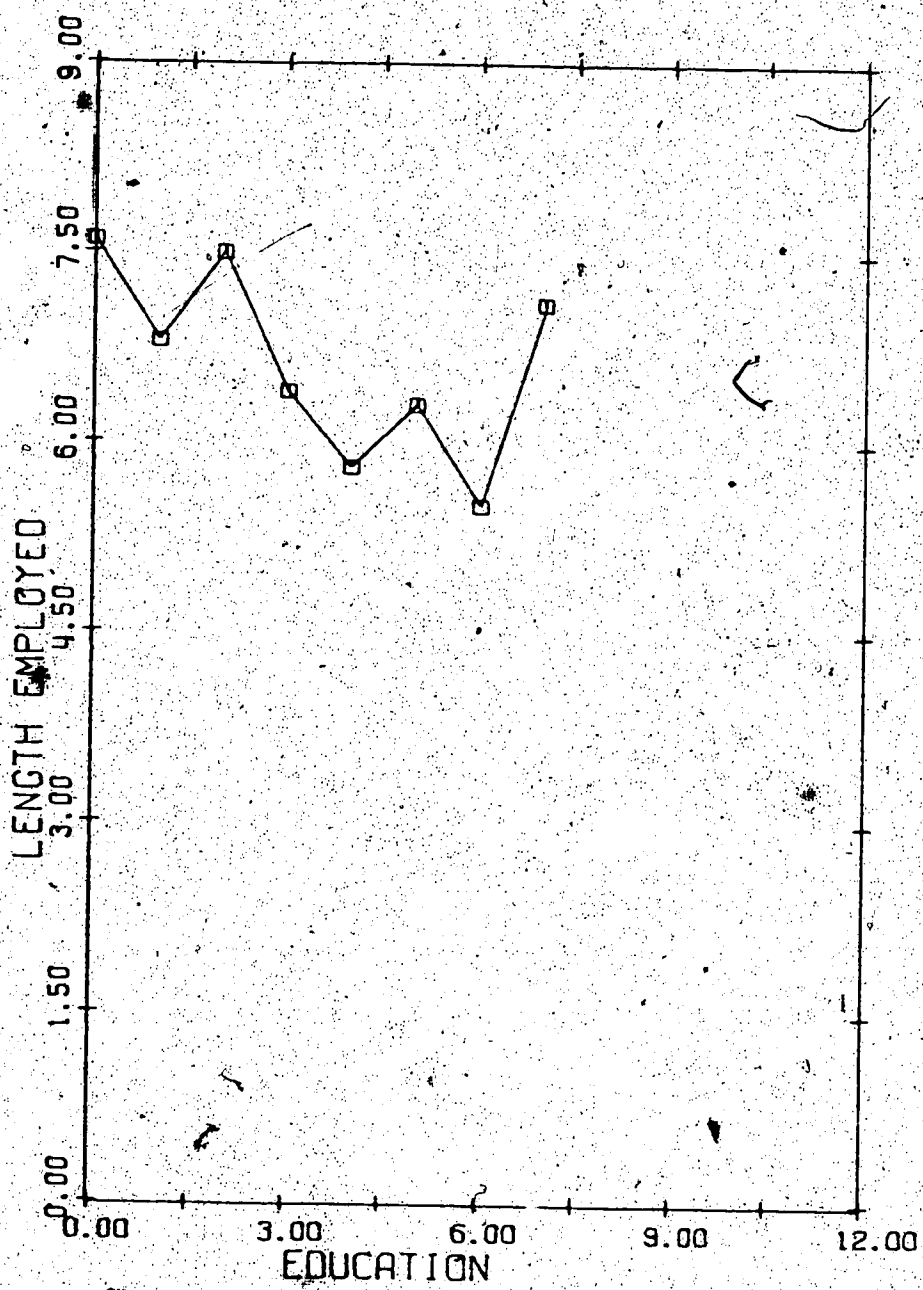


FIGURE 7 EDUCATION BY LENGTH EMPLOYED
CONTROLLING FOR BILINGUALISM

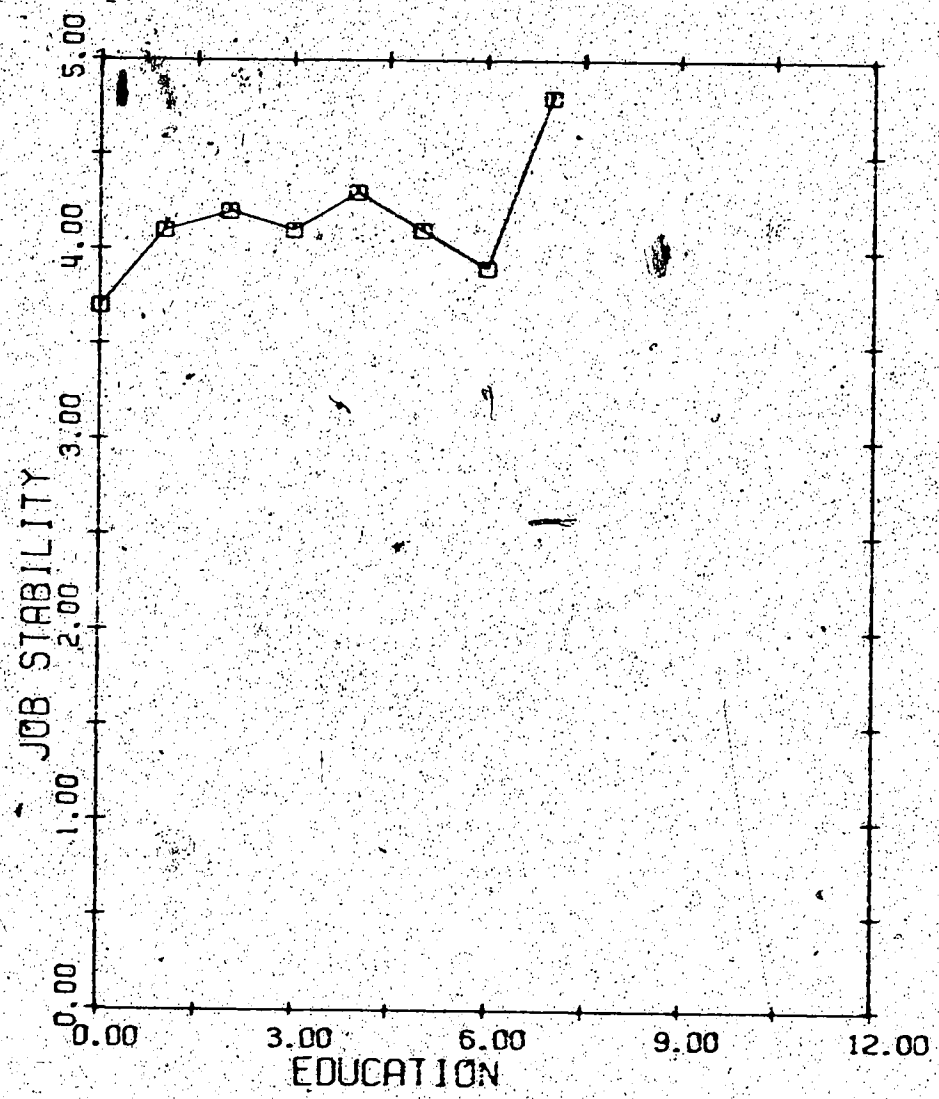


FIGURE 8 EDUCATION BY JOB STABILITY
CONTROLLING FOR BILINGUALISM

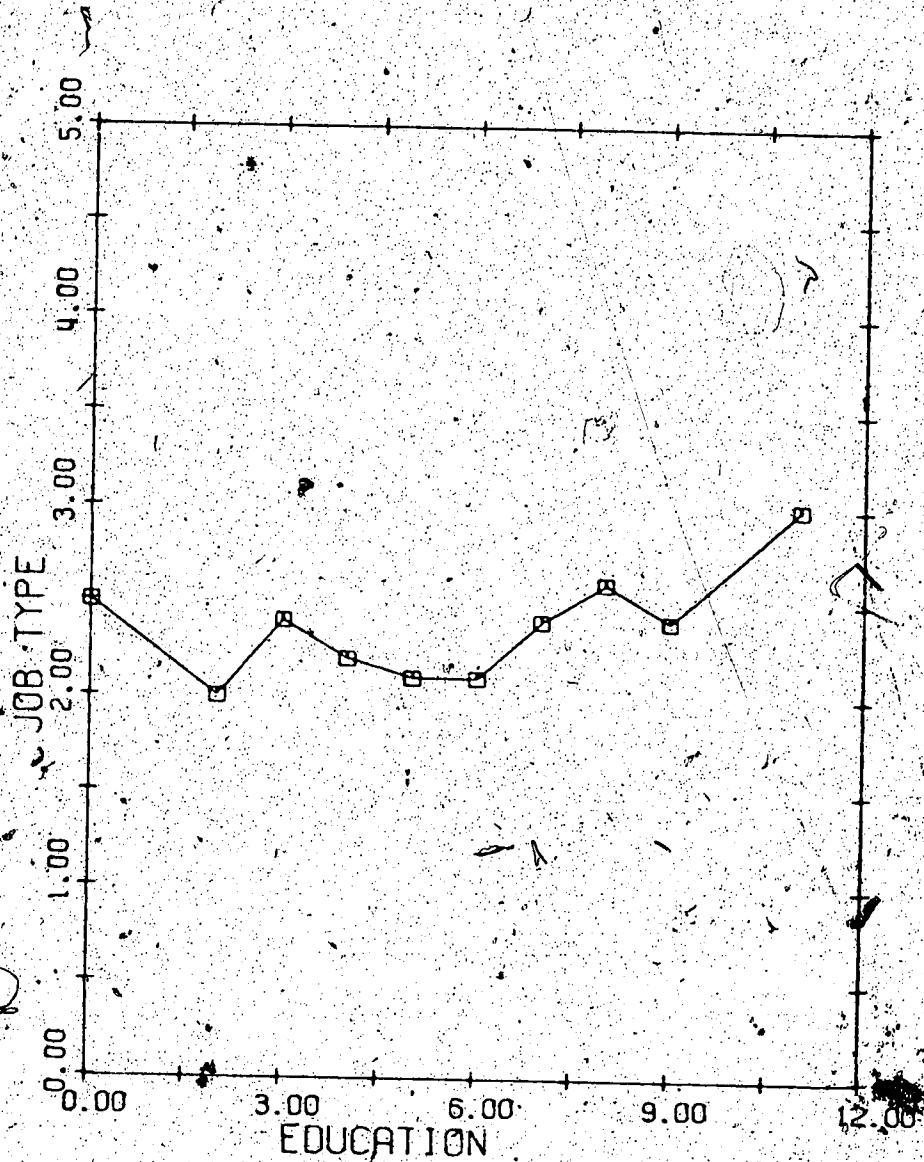


FIGURE 9 EDUCATION BY JOB TYPE
CONTROLLING FOR NON-BILINGUALISM

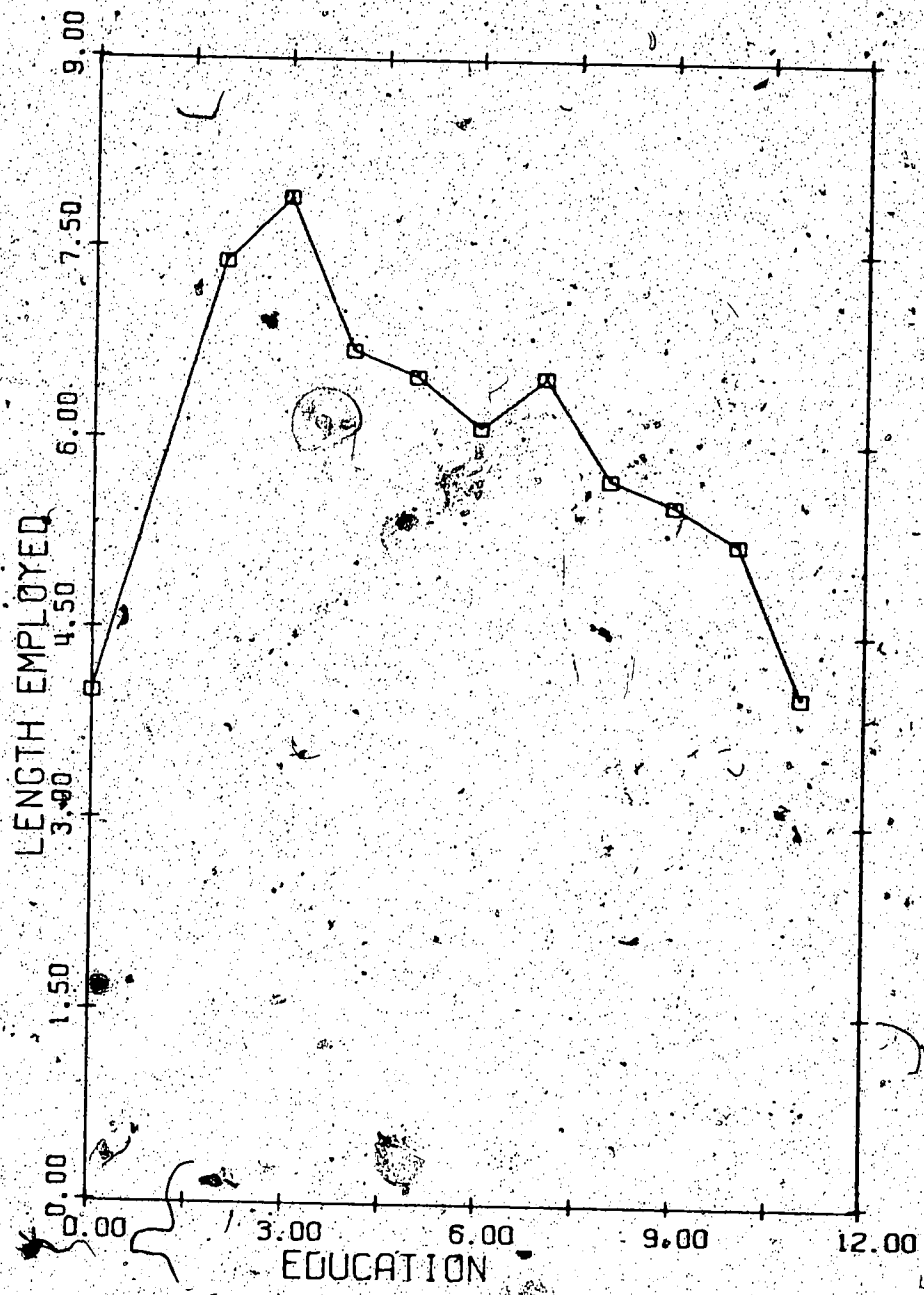


FIGURE 10 EDUCATION BY LENGTH EMPLOYED
CONTROLLING FOR NON-BILINGUALISM

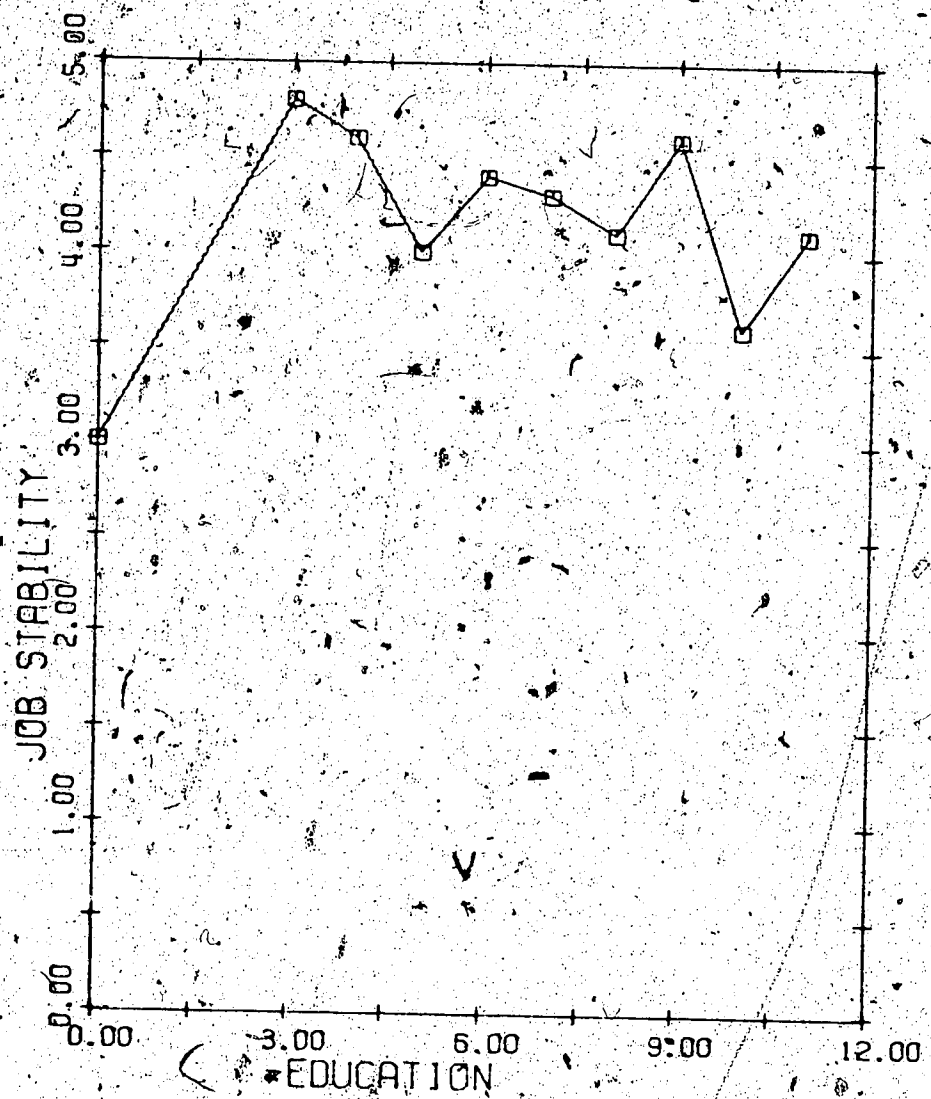


FIGURE 11 EDUCATION BY JOB STABILITY CONTROLLING FOR NON-BILINGUALISM

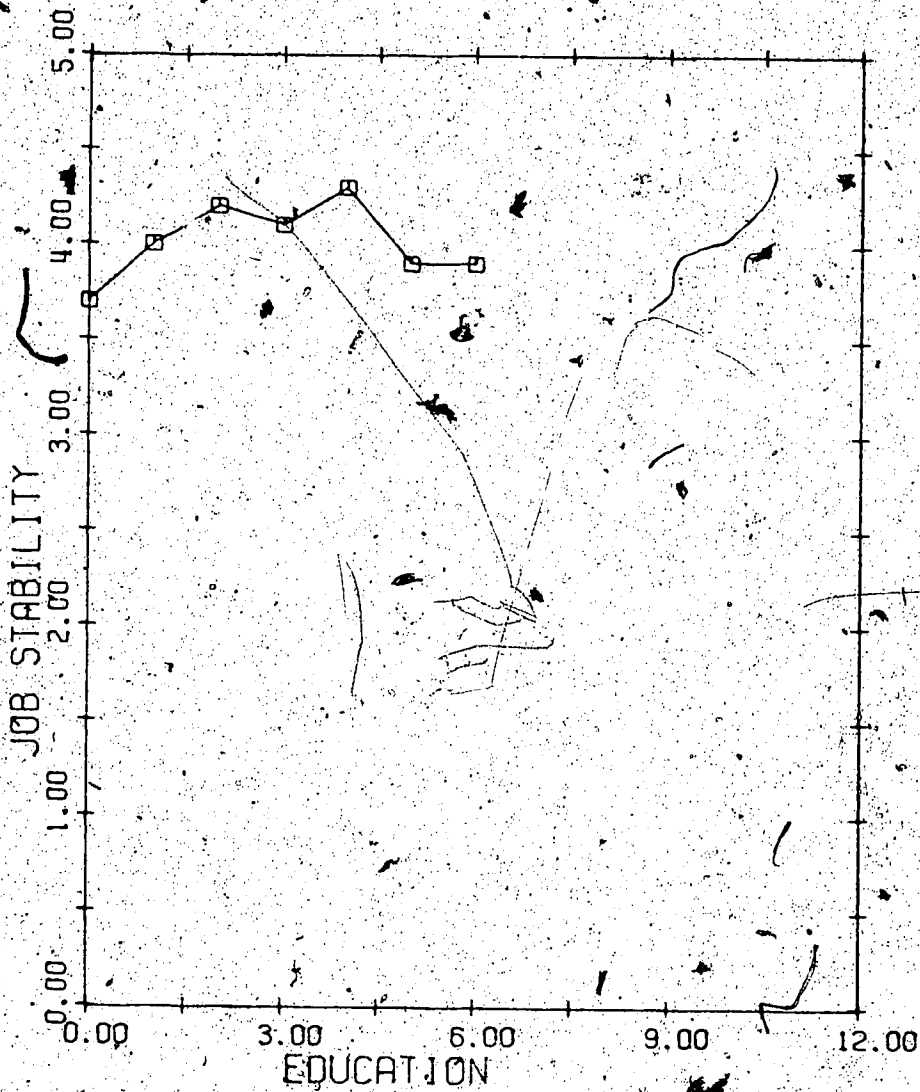


FIGURE 12 EDUCATION BY JOB STABILITY CONTROLLING FOR EAST PRE-SCHOOL RESID.

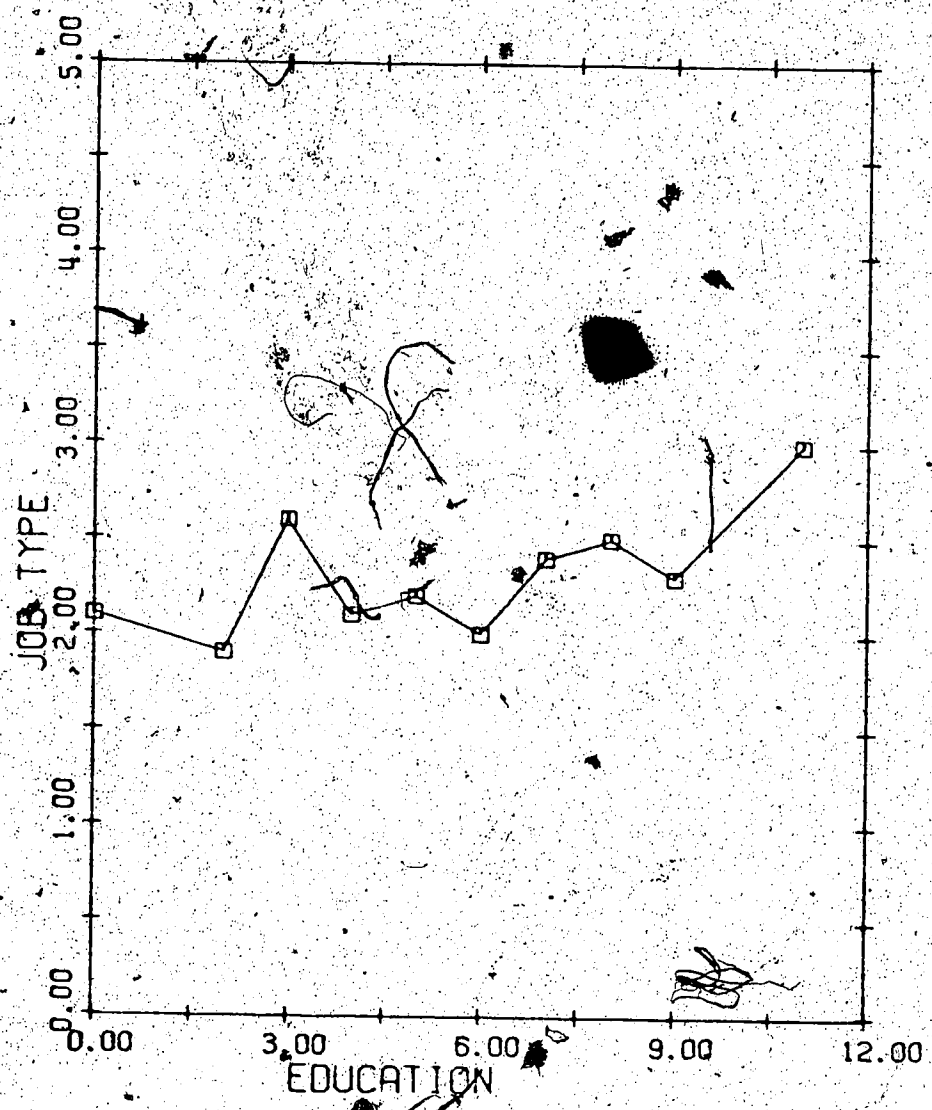


FIGURE 13 EDUCATION BY JOB TYPE
CONTROLLING FOR WEST PRE-SCHOOL RESID.

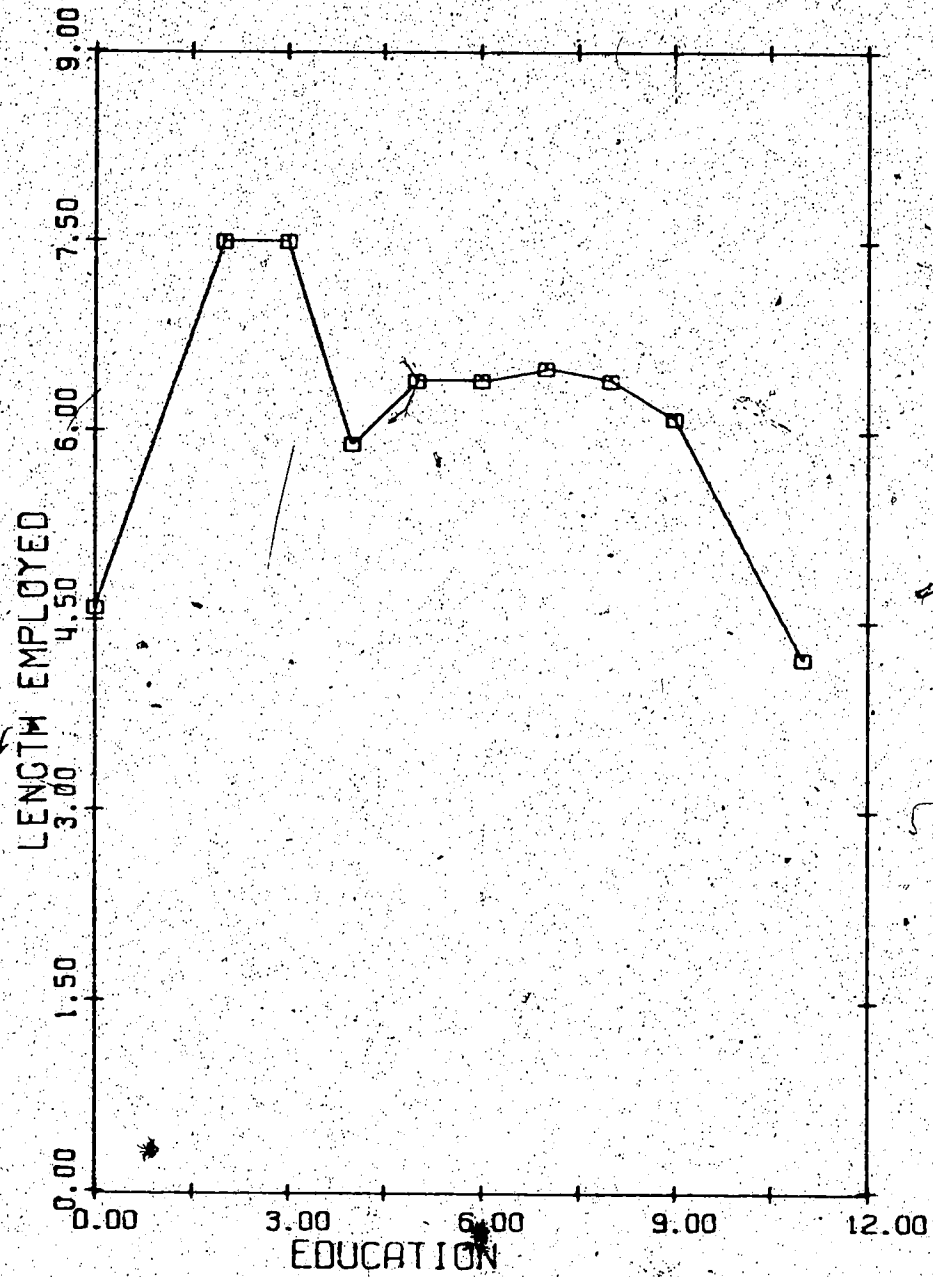


FIGURE 14 EDUCATION BY LENGTH EMPLOYED
CONTROLLING FOR WEST PRE-SCHOOL RESID.

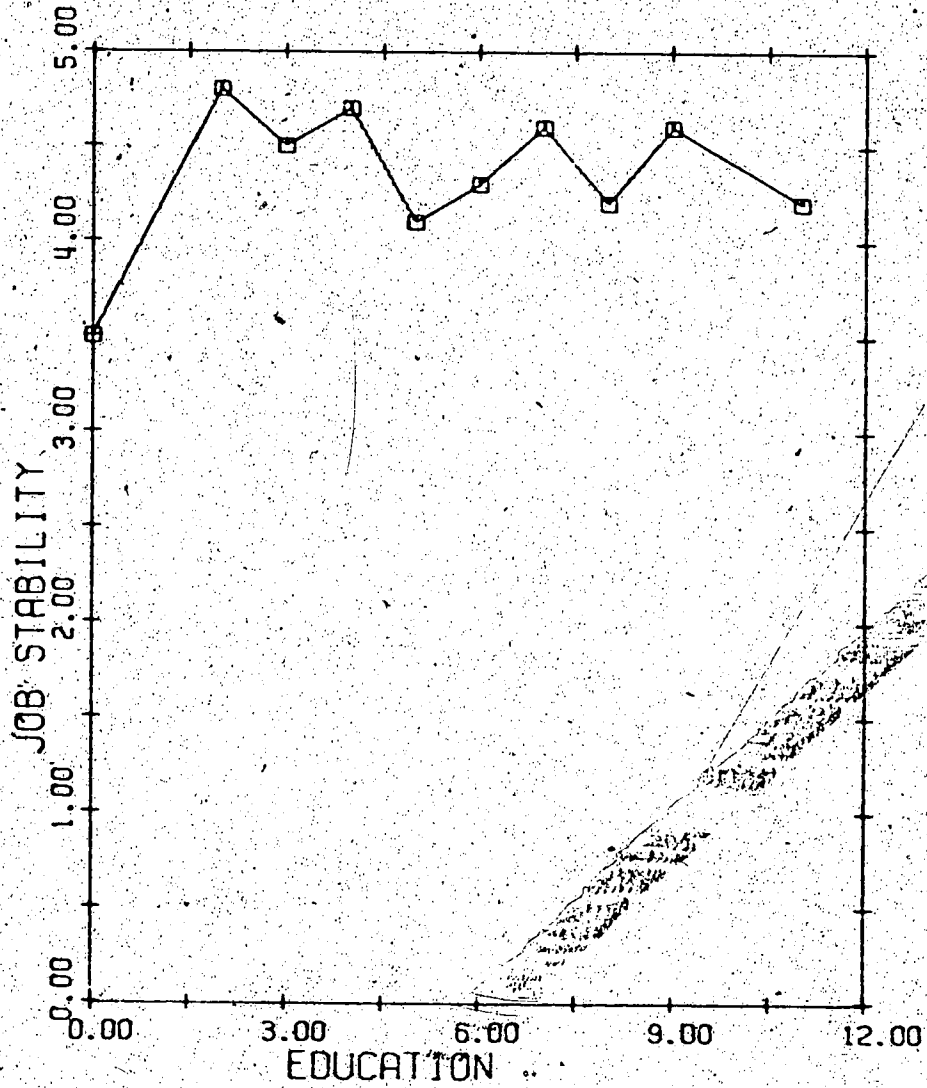


FIGURE 15 EDUCATION BY JOB STABILITY CONTROLLING FOR WEST PRE-SCHOOL RESID.

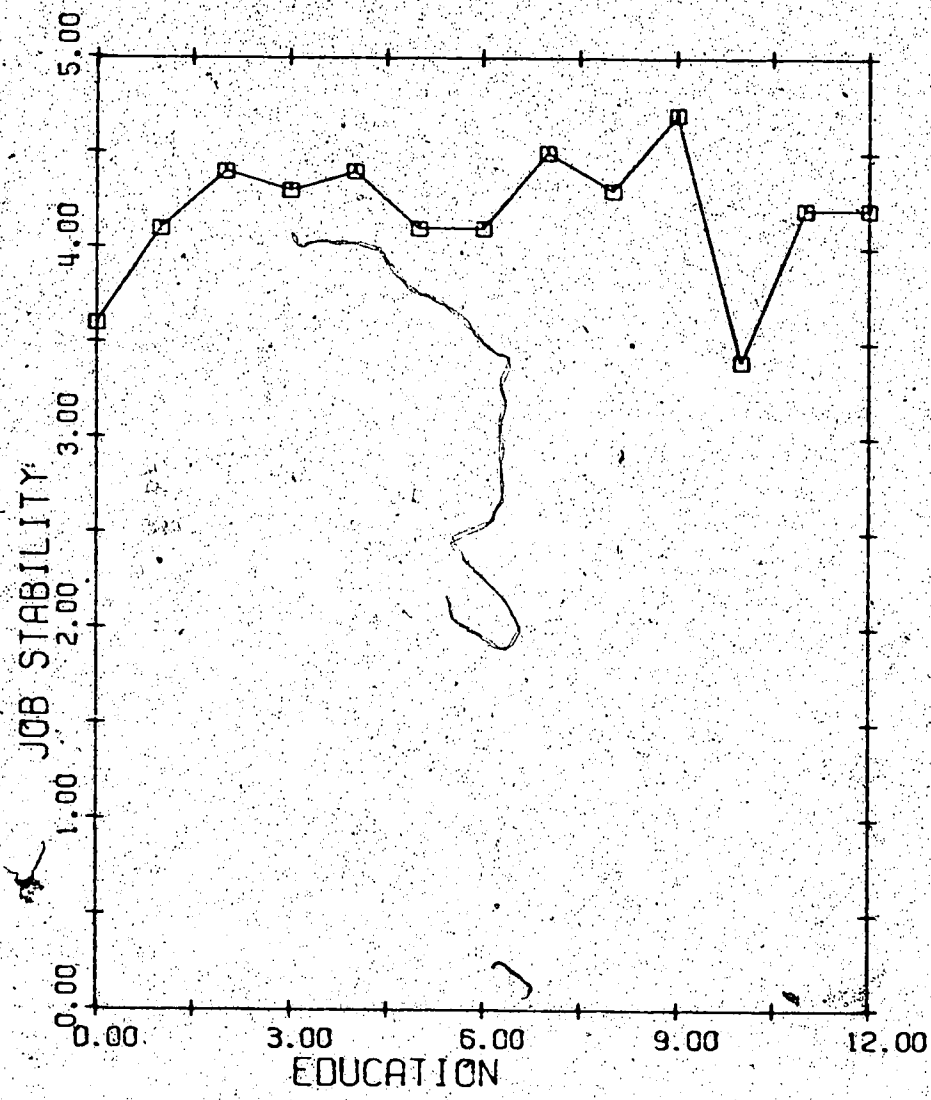


FIGURE 16 EDUCATION BY JOB STABILITY

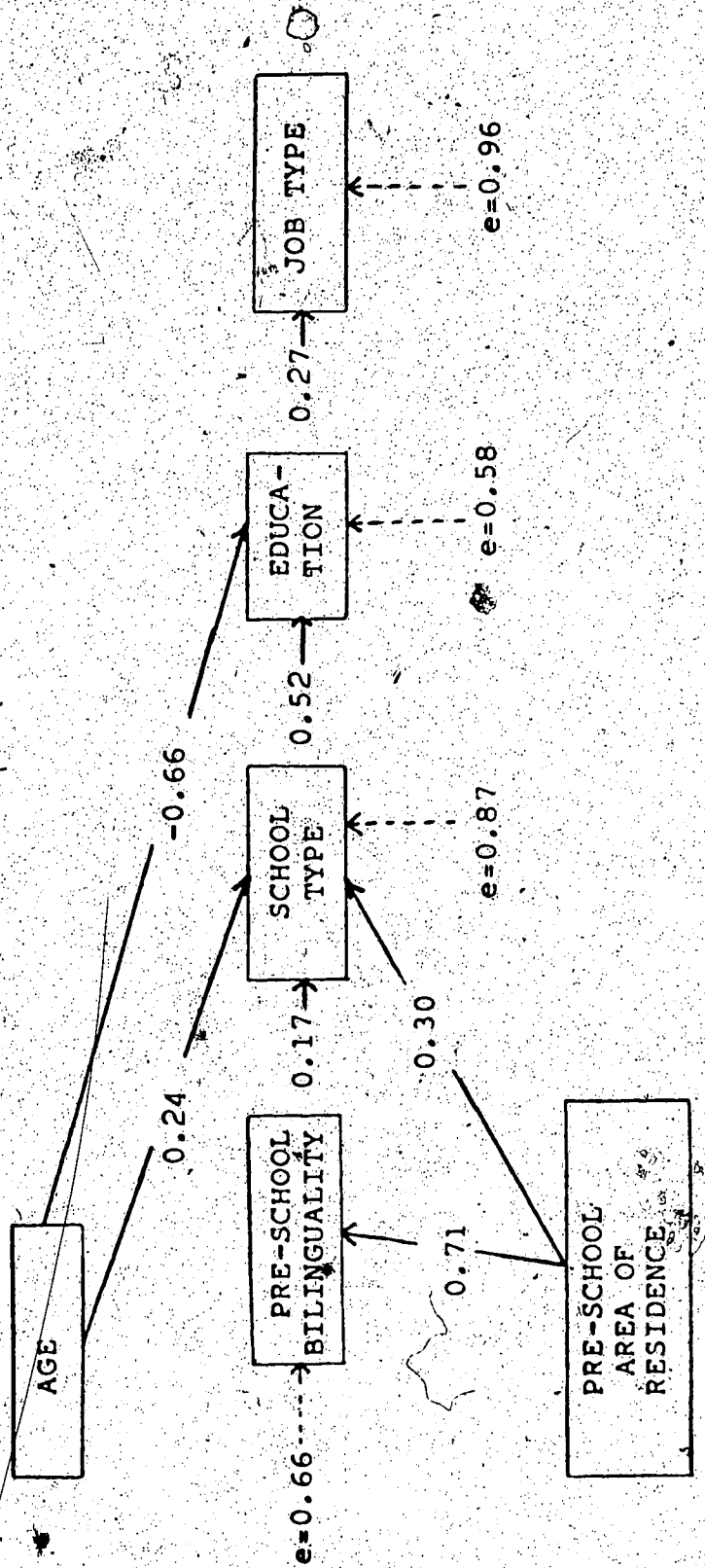


FIGURE 17. PATH MODEL EMPLOYING JOB TYPE AS DEPENDENT VARIABLE INDICATOR

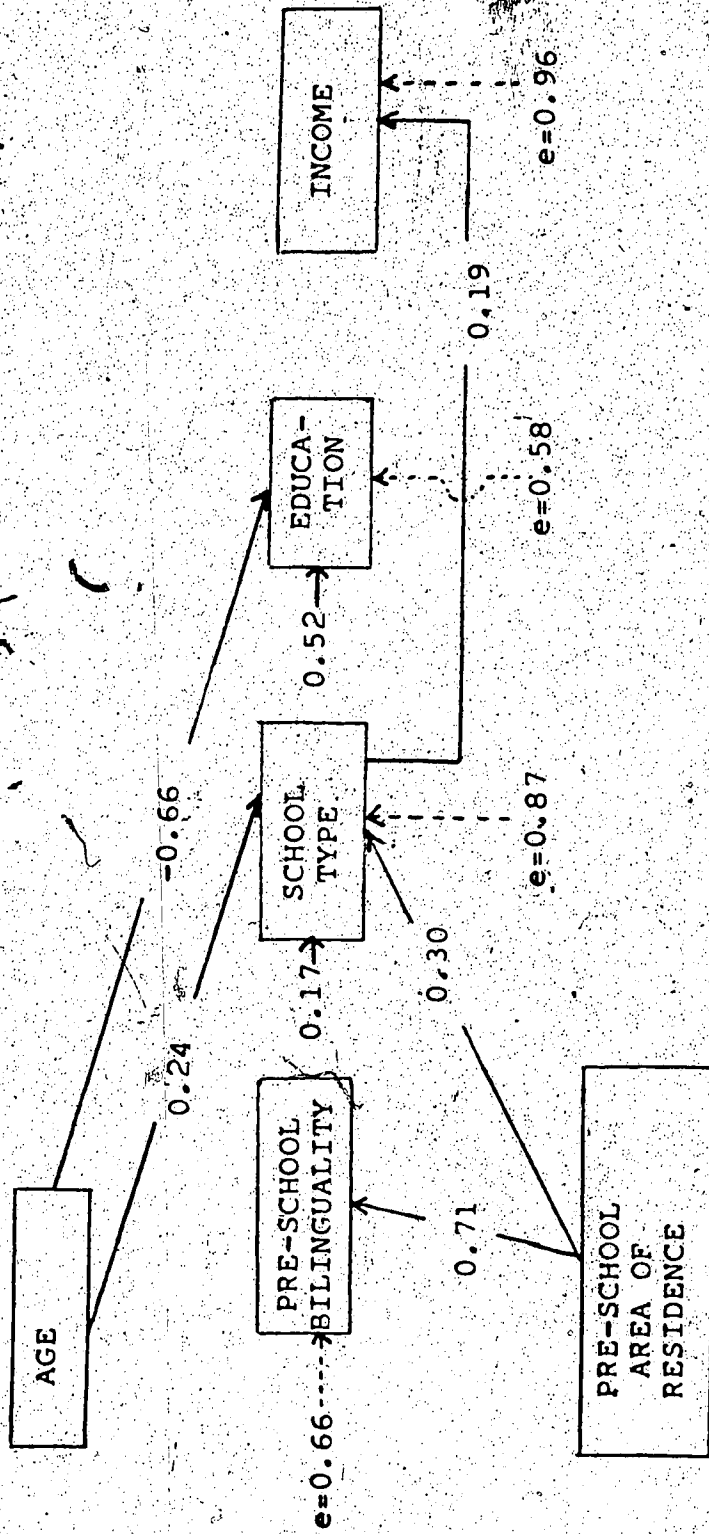


FIGURE 18. PATH MODEL EMPLOYING INCOME AS DEPENDENT VARIABLE INDICATOR

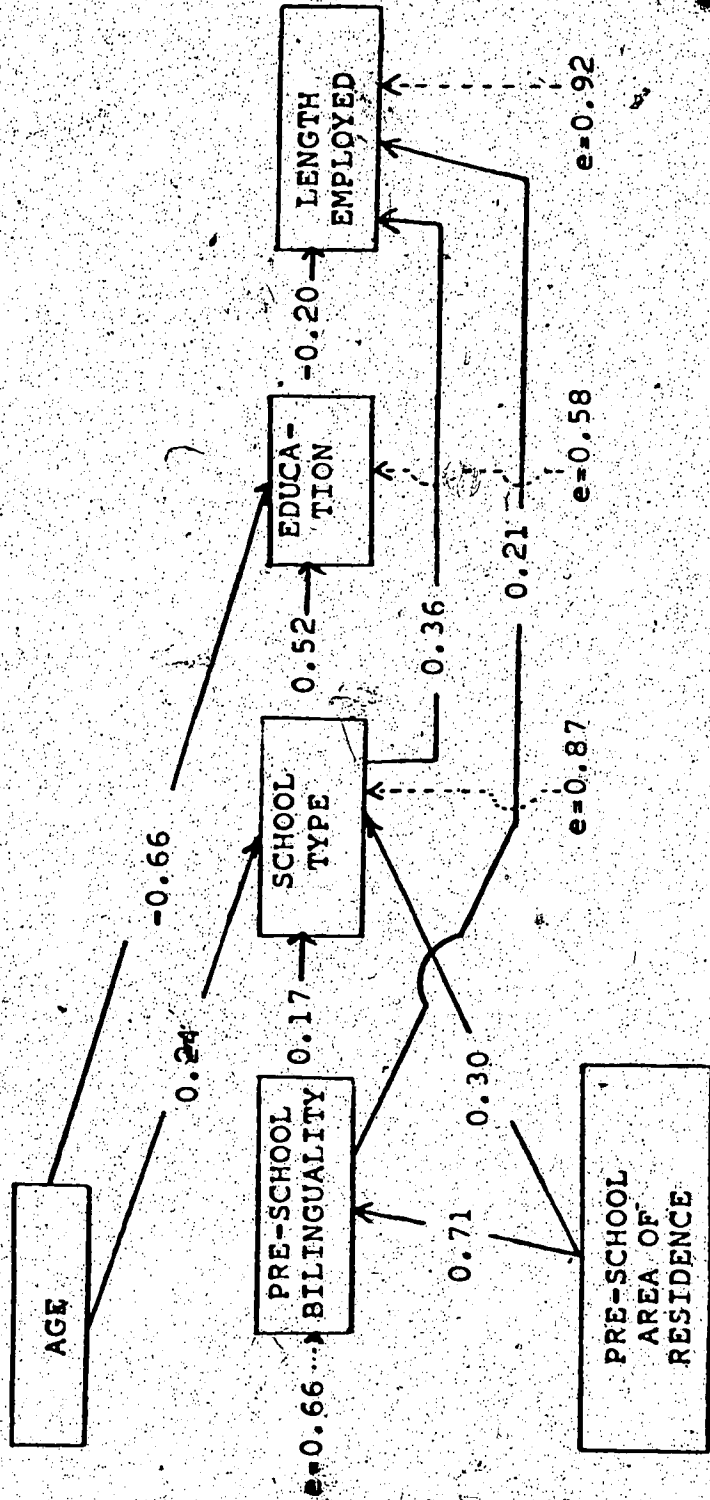


FIGURE 19. PATH MODEL EMPLOYING LENGTH EMPLOYED AS DEPENDENT VARIABLE INDICATOR

[Handwritten signature]

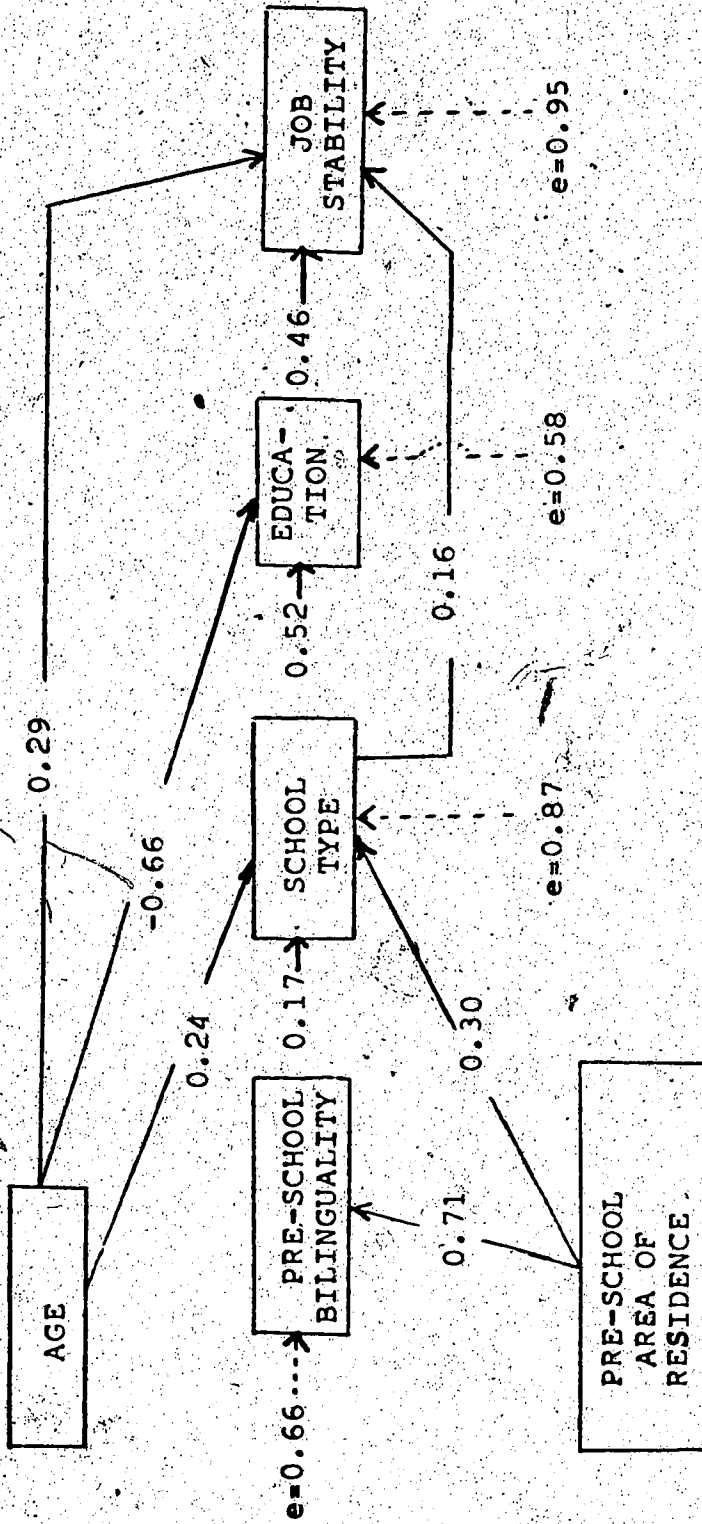


FIGURE 20. PATH MODEL EMPLOYING JOB STABILITY AS DEPENDENT VARIABLE INDICATOR