



women & children's
health research Institute



Supporting Research Excellence

May 2006 to September 2014



© 2014 Women and Children's Health Research Institute (WCHRI), University of Alberta 5-083 Edmonton Clinic Health Academy (ECHA) 11405 87 Avenue NW Edmonton, AB T6G 1C9 780.248.5602 www.wchri.org.

Some rights reserved.

This work is a product of the staff of WCHRI with member contributions.

Rights and Permissions



This work is available under the Creative Commons Attribution-NonCommercial 4.0 International (CC BY-NC 4.0) <https://creativecommons.org/licenses/by-nc/4.0/>. Under the Creative Commons Attribution license, you are free to copy, distribute, transmit and adapt this work, including for commercial purposes, under the following conditions:

Attribution—Please cite the work as follows: Women and Children's Health Research Institute, University of Alberta. 2014. *Supporting Research Excellence May 2006 to June 2014*. License: Creative Commons Attribution-NonCommercial 4.0 International (CC BY-NC 4.0)

NonCommercial—You may not use the material for commercial purposes.

All queries on rights and licenses should be addressed to Women and Children's Health Research Institute, University of Alberta 5-083 Edmonton Clinic Health Academy (ECHA) 11405 87 Avenue NW Edmonton, AB T6G 1C9 780.248.5602 www.wchri.org.

Acknowledgments

The Women & Children's Health Research Institute (WCHRI) is a partnership between the University of Alberta and Alberta Health Services, with the generous support of the Stollery Children's Hospital Foundation and the Royal Alexandra Hospital Foundation. Also, the Faculty of Medicine & Dentistry provides operating and in-kind support.

The University of Alberta and the Faculty of Medicine & Dentistry

The University of Alberta strives to create and support an environment of research excellence across the university to fuel knowledge advancement, discovery and innovation; all of which provide significant contributions to society provincially, nationally and globally. It is through the continued support of the University of Alberta's Faculty of Medicine & Dentistry (FoMD), that WCHRI can house many of its core groups and its entire administrative staff. FoMD also provides partial funding for WCHRI's operating expenses, without which WCHRI would not be able to manage its many grants programs and research support initiatives.



Alberta Health Services

Alberta Health Services is a strong and active supporter of WCHRI and their guidance has been invaluable in ensuring that women's health and Alberta Health Services' standards in the delivery of clinical care, wellness and prevention in Alberta remain a focus of WCHRI's mandate.



The Stollery Children's Hospital Foundation

The Stollery Children's Hospital Foundation is dedicated to raising funds in support of the pursuit of excellence in children's health care. The Stollery Children's Hospital has defined five themes of excellence: journey of the complex child towards optimum health; innovation and discovery; family centred care; investing in highly skilled health care professionals; and quality outcomes, quality care. The Foundation recognizes the tremendous impact that research has on innovation and discovery, disease prevention, treatment and improved health outcomes, which is why it is providing \$30 million over 10 years (2006 to 2016) to support WCHRI.



The Royal Alexandra Hospital Foundation

The Royal Alexandra Hospital Foundation inspires community support for its healthcare facilities. The Foundation empowers compassionate, leading-edge patient care through education, research, technology and facility enhancements. It provides support for the Lois Hole Hospital for Women and a growing number of specialized centres of healthcare located at the Royal Alexandra Campus. The Foundation places a strong focus on research and innovation and is committed to supporting and promoting the on-going work of research through WCHRI with a commitment of \$11 million over 10 years (2006 to 2016).



Table of Contents

WCHRI: An Overview	1
Areas of Research Activity by Members of WCHRI	5
Governance	8
Institute Development	10
Research Programs.....	13
Research Grants	14
Research Catalysts.....	18
Partnerships, Collaborations and Leveraging	23
Support Platforms for Integrated Research (SPIR).....	30
Space	41
Financials.....	42
Appendices.....	44
Appendix A – Oversight Board Membership (as of September 30, 2014)	44
Appendix B – Steering Committee Membership (as of September 30, 2014)	44
Appendix C – Scientific Advisory Committee Membership (as of September 30, 2014)	45
Appendix D – Innovation and Internal Grants Awarded	46
Appendix E – Emerging Research Team Grants Awarded	51
Appendix F – Graduate Students Funded	52
Appendix G – Summer Students Funded	55
Appendix H – Science Shop Students Funded	59
Appendix I – Lunch & Learn Seminar Series	60
Appendix J – Scientific Knowledge and Exchange Program Awardees.....	61
Appendix K – Trainee Travel Grants Funded	62
Appendix L – Resident/Clinical Fellow Research Awardees	68
Appendix M – Recruitment, Retention and Other Awards (usually multi-year awards).....	71
Appendix N – Bridge Funding Awarded	73
Appendix O – Research Informatics Tools	74
Appendix P – Research Informatics Users	75
Appendix Q – Research Coordination Users	80
Appendix R – Biostatistics Service Users.....	84
Appendix S – Lois Hole Clinical Research Users	89
Appendix T – Lipid Analysis Equipment	91
Appendix U – Genotyping Services Users	92
Appendix V – Patient & Community Engagement, Qualitative Research and KT Users.....	93

WCHRI: An Overview

Catalyze, Facilitate and Ensure Accountability (Performance and Financial)

Power of Partnership: The best hospitals with the best care are the ones who invest in discovery. These are the innovators and leaders, shaping our health system for the future. The Women and Children's Health Research Institute (WCHRI) acts as a research arm for the Stollery Children's Hospital (STO) and the Lois Hole Hospital for Women (LHHW) and is the steward of their respective Foundations' investment in health research. The vision of WCHRI is to improve health outcomes for women and children through research; a vision that is shared by the University of Alberta (U of A) and Alberta Health Services (AHS).

With core funding from the Stollery Children's Hospital Foundation (SCHF) (focused on improving children's health) and the Royal Alexandra Hospital Foundation (RAHF) (focused on improving women's health), the vision of WCHRI can be realized. This unique structure creates a collaborative environment with a shared focus on maternal, fetal and newborn health and the families of these patients. The value of WCHRI is particularly important in Edmonton: the most complicated pregnancies are delivered at the RAH/LHHW along with care of the newborns in the STO Unit at the RAH while the STO at the U of A site cares for children from birth through adolescence. Our geography makes it essential to support research that integrates throughout the sites to enable and support continued impact.

Vision

Improved health outcomes for women and children through research

Mission

To effect meaningful health outcomes through cutting-edge transdisciplinary research

Goals

- To facilitate basic and applied health research activities focused on women and children's health
- To encourage collaborative and translational research within the university and outside (community, industry, national/international institutions)
- To promote training in health research with a focus on women and children
- To provide a unified team approach for facilitating communication and establishing representation to the public, granting agencies and authorities
- To ultimately translate this knowledge for the purpose of providing the best clinical health outcomes and clinical practice guidelines
- To act as a catalyst for research and an advocate for women and children's health, with impact locally, provincially, and nationally
- To provide a mechanism for performance accountability
- To be a vehicle for communication of research outcomes

WCHRI: An Overview

WCHRI supports research organized into these three broad themes:

- Perinatal Health
- Children's Health
- Women's Health

Many disorders of both women and children affect multiple organ systems and require complex care and collaborative research. The researchers and clinicians of WCHRI are focusing on more effective ways to improve the care and health of these patients. Moreover, research focused on women and children's health can lead to prevention and reduction of long-term health complications as adults. Research leading to healthier children creates a positive cycle of human development that includes pregnancy, birth, growth and development through childhood and adolescence to adulthood. Our researchers investigate fundamental aspects of this cycle and direct the translation of new information into clinical knowledge, improved health care and a healthier population in general.

WCHRI promotes the full spectrum of biomedical, clinical and translational research through the following resources:

1. Research Grants

Innovation operating grants, emerging team operating grants, bridge funding grants, graduate studentships, resident trainee research projects, trainee travel funds, summer studentships, scientific knowledge exchange programs (SKEP) and grant development assistance

2. Research Catalysts

Endowed and Research Chairs, start-up funds, partnerships, educational programs and an annual Research Day

3. Support Platforms for Integrated Research (SPIR)

Supports basic, clinical and community-based research activities, and includes:

- Knowledge synthesis
- Research coordination
- Data management and informatics
- Biostatistics
- Patient and community engagement
- Qualitative research
- Health outcomes
- Knowledge translation
- Lois Hole Clinical Research Unit

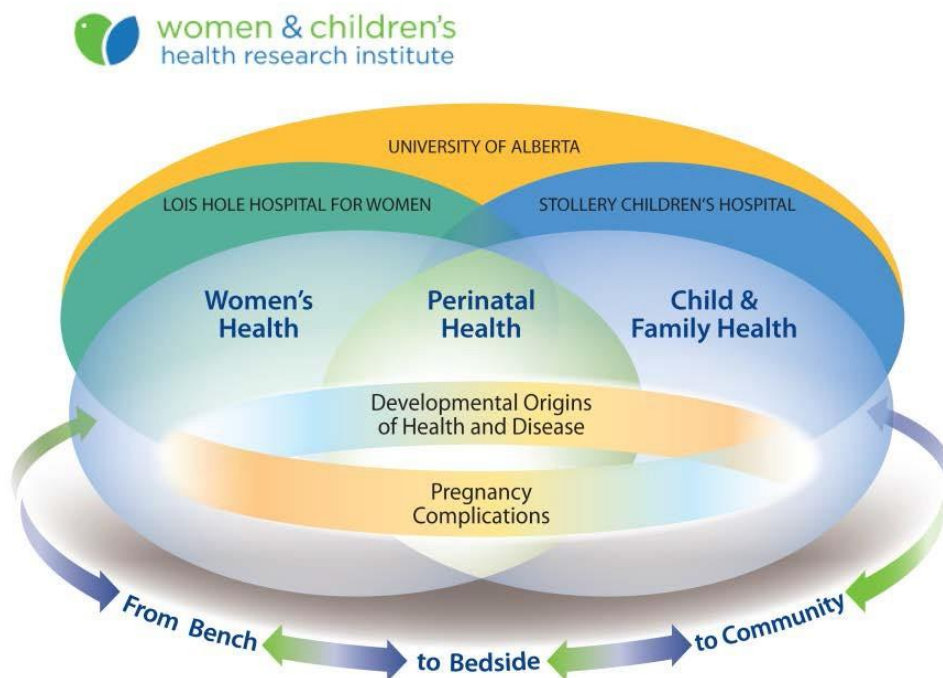
WCHRI: An Overview

The Women and Children's Health Research Institute ([WCHRI](#)) was created in 2006 with the mission of improving health outcomes for women and children through the creation of new knowledge and the translation of that new knowledge into practice. WCHRI promotes the full spectrum of biomedical, clinical and translational research through direct research catalysts, competitive grant competitions, support platforms, physical infrastructure, professional development and training, networking opportunities, and financial support for summer and graduate students and medical resident trainees. Furthermore, WCHRI actively supports and encourages existing research centres, groups and individuals to collaborate thereby reducing duplication, enhancing transdisciplinary teamwork and leveraging limited resources.



WCHRI: An Overview

Historically, health research has been carried out in silos—often disease or organ-based. In contrast, WCHRI focuses on uniting a critical mass of scientists from across health disciplines, social sciences and the community, together with industry partners, policy makers and community stakeholders. This collection of diverse perspectives supports a view of the overall physical, mental and social health of women and children. This approach allows our researchers to tackle complex problems that would otherwise be difficult, if not impossible to address by single researchers.



For the last eight years, WCHRI has acted as a point of convergence for approximately 350 academic members. Our members also include trainees (graduate, undergraduate and medical students, residents and sub-specialty residents) and government and community partners. These members span fourteen U of A faculties, AHS and various government and community organizations. These groups work together, finding synergies and sharing resources, expertise and knowledge. WCHRI provides the foundation and the infrastructure across which diverse disciplines and departments can collaborate on health research issues that will ultimately lead to improved health outcomes for women and children locally, nationally and internationally.

Areas of Research Activity by Members of WCHRI

We believe that research is integral to excellence in healthcare. Our goals are:

- To support basic and discovery research in the laboratory that has the potential to impact outcomes in women and children's health.
- To support clinical and translational research by creating the 'Research-Integrated Hospital.'

These goals will enhance our current investment and allow us to leverage provincial and national opportunities to capitalize on the research and clinical expertise that is currently part of WCHRI.

WCHRI currently has three major areas of focus: Women's Health, Perinatal Health, and Child Health. Within these areas of focus, areas of research excellence by our members include:

Pregnancy Complications

Research has now shown that early life events (i.e. pregnancy complications) can increase the risk of chronic disease later in life for both the mother and her child, and thus impact the health of all Albertans. As such, it is important to strive to improve the health of women in Alberta, by minimizing pregnancy complication rates, and optimizing infant outcomes. Pregnancy complications, particularly preeclampsia and preterm birth, are leading causes for both maternal and neonatal illness and mortality. Research is being conducted in the prevention and/or treatment of pregnancy complications that will lead to improved maternal health and better outcomes for the newborn (neonatal research). Moreover, perinatal mental health and family/community research for healthy families are both areas of research by our members that traverse both women and children's health.

Developmental Origins of Health and Disease (DOHaD)

The DOHaD concept describes how during early life (at conception, and/or during fetal life, infancy and early childhood), the environment induces changes in development that can have long term impact on later health and disease risk.

It is thought that some of these developmental alterations come about through changes in the activity of genes through epigenetic processes. Changes in gene expression and/or action may mediate responses to challenges in adulthood, such as poor diet or unhealthy lifestyle, and so affect disease risk across the life course. Timely interventions may reduce such risk in individuals and also limit its transmission to the next generation. DOHaD thus has very important implications for many societies and for global health policy.

Areas of Research Activity by WCHRI Members

Children's Health

Improved pregnancy outcomes are only the beginning in improving children's health. Disorders of children often affect multiple organ systems. While some of these disorders may be individually rare, collectively they form the most common reason for families to seek care at the Stollery Children's Hospital. Multiple areas of child health research are supported by the SCHF.

- ***Fetal Programming of Chronic Diseases*** - Pregnancy complications can have a long-term impact on offspring such as increased risk for obesity/diabetes, impacts on brain development/mental health and cardiovascular disease in later life. WCHRI members have extensive expertise and research strengths in these areas;
- ***Brain/Neurodevelopment/Mental Health*** - Some WCHRI researchers have wide expertise in neurosciences with specific research strengths in autism; cerebral palsy; stroke; brain tumors; fetal alcohol syndrome; adolescent mental health; breathing and sleep disorders of newborns and children, genetics and neurological development; neurocognitive outcomes after invasive therapies; and pediatric pain management;
- ***Lung Health*** - Some of our members have specific expertise in examining factors before birth and in the environment leading to asthma, lung damage and cystic fibrosis;
- ***Cardiovascular Disorders and Thrombosis*** - A significant strength of many WCHRI members is special expertise in newborn heart transplantation, cardiac congenital abnormalities and cardiovascular function (newborn and children), and blood clotting disorders (thrombosis);
- ***Disorders of the Gastrointestinal System*** - Our member expertise includes research in disease conditions (e.g. eosinophilic esophagitis, inflammatory bowel disease, celiac disease, colitis, short gut syndrome) and complications of liver transplantation;
- ***Disorders of the Kidney*** – Research of kidney disease that has specific impact on children is the focus of some of our members including: acute and chronic kidney injury (the latter from transplantation), and IgA nephropathy;
- ***Childhood Obesity/Nutrition/Endocrinology*** - Some WCHRI researchers have expertise in developing effective treatment programs for children with severe obesity (which can lead to Type II Diabetes in the pediatric population) and also examine genetic and environmental factors that may predispose children to obesity;
- ***Childhood Cancer and Blood Disorders*** – Research strengths lie in examining the molecular basis of certain cancers and related blood disorders, possible new treatment strategies and cancer surveillance;
- ***Musculoskeletal System/Rehabilitation*** - Our members' expertise ranges from basic, clinical and community research to improve children's well-being.

Areas of Research Activity by WCHRI Members

Women's Health

Women's health research is supported by the RAHF, which has a priority to support the Lois Hole Hospital for Women. Our members have specific expertise in the following areas:

- ***Women's Health*** - In addition to perinatal/maternal health as noted above, the impact of a complicated pregnancy on the mother can increase her risk for later life chronic diseases such as metabolic and cardiovascular diseases and diabetes; another important research area is focused on how stress affects women's health;
- ***Mature Women's Health*** - Includes the successful recruitment of the Cavarzan Chair in Mature Women's Health with a targeted focus on urogynecological complications (urinary incontinence) as well as menopause. In addition, WCHRI researchers have expertise in women's cardiovascular health, which is at increased risk for postmenopausal women;
- ***Gynecological Cancer*** - Some of our researchers are focused on specific targeted research in ovarian cancer and we have successfully recruited into the Ovarian Cancer Chair position.

Governance

Organizational Structure

The research activities, support services and facilities of WCHRI are managed by an efficient administrative structure under the direction of Dr. Sandy Davidge. The team spans operational activities (finance, communications, grant administration, strategic planning and human resources) together with Support Platforms for Integrated Research (SPIR).



* Support Platforms for Integrated Research

Oversight Board

WCHRI's Oversight Board is comprised of leaders from U of A, AHS, SCHF and RAHF. The Board provides the convergence point for stakeholders where strategic directions and new initiatives may be forged. The Oversight Board meets quarterly with additional ad hoc communication throughout the year as needed. The Oversight Board is responsible for:

- Determining the direction and scientific mission of WCHRI
- Shaping the strategic vision for research programs and activities
- Ensuring the delivery of quality research
- Respecting relevant legal and regulatory requirements
- Reviewing activities and recommendations from WCHRI committees
- Approving the annual budget
- Monitoring overall performance

Please see Appendix A on page 44 for the membership of this Board.

Governance

Steering Committee

WCHRI's Steering Committee provides cross-organizational representation reflective of the WCHRI transdisciplinary vision. The Committee relies on direction from the Oversight Board to determine appropriate and innovative operational plans and tactics. The Steering Committee is responsible for:

- Achieving the outcomes of the operations plan and annual budget
- Ensuring that the WCHRI scope aligns with the requirements of the stakeholder groups
- Guidance on operational and business issues
- Evaluation of project risk
- Reconciling differences of opinion and approaches

Please see Appendix B on page 44 for the membership of this Committee.

Scientific Advisory Committee

WCHRI's Scientific Advisory Committee provides cross-faculty representation and is responsible for advising the WCHRI Director on:

- Strategic opportunities for new research programs
- Prioritization of the activities of WCHRI research programs
- Environmental scanning for future strategic planning
- Methods for furtherance of WCHRI projects and studies
- Assessment and monitoring of potential or current conflict of interest
- Assisting in the dissemination to stakeholders of key WCHRI results and impacts

A complete list of the current Scientific Advisory Committee members is available as Appendix C on page 45.

Institute Development

Director – Dr. Sandy Davidge



Sandy Davidge

Dr. Sandy Davidge is an internationally recognized expert in women and children's health research and is a strategic leader in the promotion of transdisciplinary research and education. Dr. Davidge is responsible for maintaining and advocating WCHRI's values of collaboration, integrity, teamwork, research excellence and community focus, and developing innovative programs to promote WCHRI and support its members. She also works to build and nurture partnerships with a variety of institutes, organizations and community-groups committed to women and children's health.

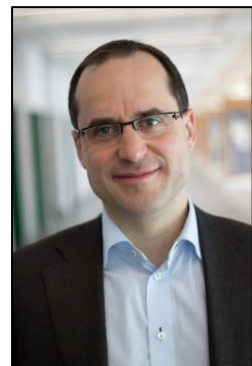
Dr. Davidge's research and leadership experience spans both women and children's health. She is a Professor in the Department of Obstetrics and Gynecology with an adjunct appointment with Department of Physiology at the U of A. She also holds a Tier 1 Canada Research Chair in Maternal and Perinatal Cardiovascular Health.

Associate Director – Dr. Lawrence Richer

Dr. Lawrence Richer assists WCHRI in establishing and maintaining the goals and values of the Institute as well as leading our efforts to provide a coordinated platform to incent, facilitate and support clinical and health outcomes research excellence. Dr. Richer is an Associate Professor and Pediatric Neurologist, who has an active clinical practice and on-going research related to pediatric migraine therapy. He also has a strong interest in clinical and research informatics and has a leadership role in the Faculty of Medicine and Dentistry as Associate Dean, Clinical Research. Dr. Richer's clinical experience complements Dr. Davidge's expertise in biomedical research.

Dr. Richer is leading a number of key projects, including:

- Implementing a "Support Platforms for Integrated Research" by providing strategic direction in the integration of WCHRI's clinical core services and increasing value to our members, stakeholders and funders;
- Liaising with the Strategy for Patient Orient Research (SPOR) initiative in the domain of research informatics and data access;
- Determining and implementing a business plan for the use of ePRO and new research informatics tools in aid of WCHRI goals and values;
- Evaluating privacy issues related to clinical research and guiding preparation of a Privacy Impact Assessment for WCHRI's research informatics area;
- Providing input regarding Institute evaluation and benchmarking; and
- Serving as liaison with the national Maternal Infant Child & Youth Research Network (MICRYN) and the provincial Child Data Centre.



Lawrence Richer

Institute Development

Administrative Team

WCHRI's administrative team manages the day-to-day administration of the financial, human resources and administration of the Institute. Under the direction of the Finance and Operations Officer, Louanne Campbell, the administrative team coordinates the functions of WCHRI including budget, financial reporting, membership, support services and billing. The team supports the development and documentation of efficient procedures, the longer term strategic direction, manpower planning and sustainable funding. Administrative Assistant Deb Key is responsible for all administrative, human resource and secretarial duties associated with the Institute while Jackie Mechlaoui, Finance Assistant, provides payroll and general accounting services.



From left to right: Jackie Mechlaoui, Deb Key, Louanne Campbell

Grant and Research Catalysts

The Grant and Research Catalysts department monitors and administers the annual innovation, graduate and summer studentship competitions, along with research catalysts such as recruitment and retention awards, partnerships and mentoring/networking opportunities. Dr. Lorin Charlton also leads the 'Connecting through Research' initiative with the Department of Pediatrics, created to support the grass-roots evolution and growth of networks or teams of WCHRI researchers working together, sharing expertise and resources to tackle complex interdisciplinary health research issues.

Services include:

- Facilitated research seminars and workshops leading to networking groups and potentially team creation;
- Administrative support to ensure applications and forms are completed correctly and on time;
- Grant workshops held throughout the year to give our applicants guidance in producing top-quality grant applications;
- Operating grant and studentship competition administration and coordination;
- Identification and development of appropriate grant review committees;
- Educational programs (Lunch & Share workshops for WCHRI-funded students, Lunch & Learn educational seminars);
- Management and administration of recruitment and retention processes; and
- Management and administration of partnership processes.



Lorin Charlton

Institute Deveopment

Communications

WCHRI believes that timely, clear and accurate communication is an essential component of our interactions with our members, stakeholders, funders and partners.

Our Communications Coordinator is tasked with generating appropriate and timely messaging, and collaborating with communications professionals from U of A, AHS, SCHF, and RAHF as required.



Olenka Melnyk

Communications activities include:

- Developing communications plans and strategies,
- maintaining the website,
- producing the quarterly newsletter and weekly bulletin,
- writing, editing and overseeing production of the annual report
- responding to the communications needs of and requests from members, funders and partners, and
- production of other WCHRI communications materials (e.g. fact sheets, PowerPoints, brochures).

Research Programs

The overarching goal of WCHRI is to support excellence in research leading to improved health outcomes for women and children. This includes incorporating sustainability strategies such as leveraging resources and cost-recovery mechanisms, which are discussed later in this document. With respect to research grants, research catalysts and research support services, we provide our members with a range of interrelated funding and support opportunities such as:

- Innovative grant funding to support new, cutting-edge research ideas;
- Resident/clinical fellow trainee research awards which allow clinical practitioners to undertake research projects during the course of their clinical training;
- Graduate and summer studentships designed to build capacity and train and support the next generation of researchers in women and children's health;
- Travel awards which partially support the cost of WCHRI Trainee attendance at national and international conferences where they present their original research results;
- Scientific knowledge exchange programs to offset the costs of holding conferences or inviting renowned speakers to give presentations widely relevant to our membership;
- Research Chairs, which support the recruitment of internationally recognized researchers;
- Identification, recruitment and retention of distinguished researchers with expertise and knowledge that aligns with the WCHRI vision;
- Start-up funding for new researchers to allow for laboratory set-up and ongoing salary support for technicians and research associates;
- Partnership resources, where WCHRI collaborates and/or shares limited resources to provide our members with access to a growing variety of research services and support; and
- Research support services to provide infrastructure and expert assistance for clinical research coordination, clinical research informatics and data management, biostatistical analysis, patient and community-based and qualitative research support, and knowledge translation and dissemination.

Each of these programs is discussed in further detail under the following headings: Research Grants, Research Catalysts and Support Platforms for Integrated Research.

Research Grants

One of the key ways that WCHRI supports research excellence is through competitive grant funding and research catalysts. Our programs include: operating grants, bridge funding, studentships (graduate, summer), recruitment and retention awards (start-up grants, endowed chairs) and partnerships. These programs are competitive with only excellent research proposals receiving funding. Our competitive grant programs and partnership strategies facilitate the use of our resources in a way that maximizes impact and leverages funds from other partners and agencies.

Innovation Grant Competitions

While some of the WCHRI innovation grants support projects that have the potential to relatively quickly target a challenging clinical health problem, others generate preliminary data for applications to larger funding institutions.

The innovation grants offer up to \$50,000 to support research excellence for projects directly related to women and children's health promotion, prevention of disease and treatment. Grants are awarded for a two-year time period. The innovation program offers two application streams, one focusing on biomedical/quantitative projects and one on community/patient health.

The successful innovation awards and their project titles are listed in Appendix D on page 46.

Clinical Research Seed Grants

This grant competition is intended to foster clinical and educational research in the Stollery Children's Hospital and the Lois Hole Hospital for Women that would be immediately relevant, or rapidly translatable, towards improved health outcomes for children and women.

Grants will be up to \$15,000 for a one year term. This initiative is designed to encourage a research integrated hospital environment by engaging a variety of care providers in clinical research.

Studentship Programs

WCHRI has numerous trainee members, who have been supported by competitive funding and educational programs, as well as the benefits of being part of the WCHRI community. These trainees include undergraduate and graduate students, postdoctoral fellows and residents, many of whom have completed their training and are now working in academic and other roles supporting women and children's research around the world.

WCHRI provides a range of funding opportunities designed to build capacity and train and support the next generation of researchers in women and children's health. These programs include:

- Graduate and summer studentships
- Scientific knowledge exchange programs
- Research education programs

Research Grants

Graduate Student Research Support

WCHRI offers competitively funded grants of \$24,000 per year for a maximum of two years for students (Master's or PhD) in a full-time, thesis-based graduate program at U of A pursuing studies related to women and children's health. Payments are provided in the form of monthly stipends which may be cost-shared depending on the academic level of the supervisor. A top-up stipend of \$3,000 is awarded to candidates who are successful in achieving external funding. In this way, we are able to leverage our studentship budget and offer more awards to students who may not otherwise qualify for external funding (although all WCHRI grants are offered only to those whose scholastic achievement and research projects are deemed excellent by our committee). Students from all disciplines and departments are eligible and are encouraged to apply. Successful applicants participate in several WCHRI-sponsored activities during the funding cycle. As part of the criteria for the funding, students prepare and deliver a community presentation based on their research. All WCHRI-funded students also present their research at our annual Research Day, held every November.

Appendix F on page 52 provides a full listing of graduate awardees along with their project titles since 2009.

Community Presentations

All WCHRI supported graduate students are required to complete a community presentation after their first year of funding. This process is facilitated by Dr. Renee Polziehn, Professional Development & Outreach Director in the Faculty of Graduate Studies & Research. Dr. Polziehn arranges with local junior high and high schools for the trainees to present their research to a wide range of young students in Edmonton. A representative of WCHRI attends these presentations whenever possible, and we provide guidance and support in developing their presentations.

Summer Student Research Support

WCHRI Summer Studentship awards provide academically gifted young students the opportunity to participate in research related to women and children's health during the summer months. Students work on specific projects under the supervision and mentorship of WCHRI researchers. The program helps to foster a new generation of researchers who may choose to pursue careers in women and children's health.

The WCHRI Summer Student award, valued at \$1,300 per month is offered for the summer months May to August. Incentive awards (of \$250 per month) are available for those who have been successful in obtaining both the WCHRI Summer Student award as well as another competitive summer studentship award.

See Appendix G on page 55 for a listing of all summer students funded since 2009.

Research Grants

Patient - Community Engagement Training Program

The WCHRI Patient – Community Engagement Training Program offers similar summer studentships for projects with a Community-Based Research (CBR) component. This is a granting opportunity that offers students from all departments and disciplines the opportunity to become involved in a community-based research project during the summer months. This program is intended to foster the applicant's interest and skills in community-based research relevant to women and/or children's health and the applicants often have a previous interest and commitment to CBR. The program is a training opportunity that brings together U of A students and community organizations in pursuing summer research projects that are mutually beneficial.

See Appendix H on page 59 for a listing of all science shop students funded since 2010.

Trainee Travel Grants

WCHRI provides (\$750) travel grants to our trainees to present their original research findings at national and international meetings. This gives our students the opportunity to network with their peers and other researchers working in the same field. In this way, trainees learn to collaborate with other researchers while contributing to knowledge translation within the research community.

Appendix K on page 62 provides the student names, abstract titles and conferences that have been funded.

Resident Trainee Research Grants

The intent of this competition is to encourage more medical residents (mandatory for pediatric residents) to discover and pursue research programs of their own. The grant provides them with an opportunity to experience the process of applying for research funding (to learn how to write a research proposal, put together a project budget and follow competition guidelines) as well as to allow them to carry-out a small research project. WCHRI offers up to \$2,000 plus \$500 for biostatistical analysis to trainees at the Resident, Subspecialty Resident and Clinical Fellow levels in various U of A departments. Every year, about 12 residents enter the program and they are provided with all of the same supports that we offer to our graduate and summer students. In addition, WCHRI monitors the preceptor/trainee relationship and provides assistance as required.

See Appendix L on page 68 for a listing of all previously funded trainees.

Research Grants

Scientific Knowledge Exchange Program

WCHRI is pleased to provide two Scientific Knowledge Exchange grants. These awards help to support the following:

1. Visiting lecturers to U of A, and
2. Conferences, symposia and workshops hosted by WCHRI members

This very successful program has allowed our members to sponsor world-class speakers to present their research at the U of A, as well as to host various symposia at the U of A and elsewhere in Alberta.

For a complete list of SKEP awardees please see Appendix J on page 61.

Progress and Final Reporting

All WCHRI funded researchers and trainees are required to submit final reports detailing the outcomes and impacts of their funded research. Our Graduate students are also required to submit a progress report after their first year of funding. In this way, WCHRI is able to capture publications, presentations, research results and other outcomes from our programs. This information is used both to evaluate the effectiveness of our programs as well as to highlight the successes of our students and to share with our funders.

Research Catalysts

Research Chairs

The SCHF and RAHF funded research chairs act as an attractor for new talent and provide a stable source of multi-year research support. SCHF funds a research chair in Autism Research. The RAHF has committed to supporting three chairs in women's health. These include Ovarian Cancer Research Chair, Lois Hole Hospital Chair and the Cavarzan Chair in Mature Women's Health Research. Three of our WCHRI-supported chairs have been filled to date. These include:

- Stollery Children's Hospital Foundation's Chair in Autism Research - Dr. Lonnie Zwaigenbaum
- Cavarzan Chair in Mature Women's Health Research & Innovation - Dr. Sue Ross
- Sawin-Baldwin Chair in Ovarian Cancer – Dr. Lynne Postovit

Recruitment and Retention and Start-Up Support

It is important to identify, recruit and retain new U of A researchers working in women and children's health. WCHRI funds are made available through funded chairs, or other forms of support for senior investigators with expertise in research related to WCHRI's vision. WCHRI also provides start-up and operational funding for new U of A research recruits. The funds complement those provided by AHS and/or U of A faculties, departments and institutes to recruit and retain renowned researchers and clinician-scientists. The funds aid in establishment of their laboratory and/or research program. This commitment often begins the year that the researcher is recruited and continues for three to five years. All researchers are active WCHRI members, participating in programs and serving on committees. All are monitored for progress regarding publications and research outcomes to support our benchmarking and assessment activities.

Please see Appendix M on page 71 for an entire list of researchers who have received WCHRI Recruitment and Retention and Start-Up support.

Discovery Services

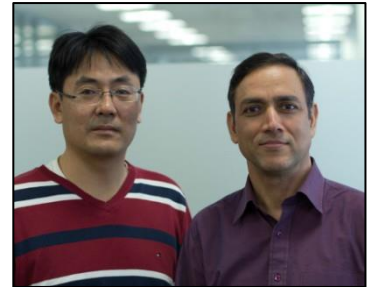
The capacity to support research projects is a key strength of WCHRI. So often research projects demand the talents of highly qualified personnel however projects are frequently allocated funding for only part-time positions. Or perhaps a relatively short term engagement with an expert is all that is required to keep a project on track and produce high-quality research results. WCHRI has services available on a partial cost-recovery basis to address this need.

Research Catalysts

Biostatistics Service

The Biostatistics Service staff works with researchers to produce high quality research based on sound research methods. They are typically involved in planning of a study as well as the work that occurs once the data has been collected and is ready for analysis.

High quality research requires the use of appropriate statistical principles and techniques which may include key statistical aspects such as: study design, sample size and power calculations, data analysis, interpretation of results and review of statistical sections of funding applications and manuscripts. In addition, they provide advice on: research methodologies, data collection forms, database requirements, and statistical software. This ensures research studies have methodological rigour and will meet the standards set by peer-reviewed journals.



From left to right: Sung Hyun Kang, Arun Pokhrel

Statistical thinking provides valuable contributions throughout different stages of the research process: study design, grant proposal development, data analysis, results interpretation and manuscript preparation.

Biostatistics Team

- Sung Hyun Kang, Biostatistician
 - Arun Pokhrel, Biostatistician
-

Projects

For a list of Biostatistics Service supported projects, please see Appendix R on page 84.

Research Catalysts

Genotyping Services

Researchers in numerous groups utilize transgenic mouse models for their experiments and these models are vital for carrying out their research goals. The Genotyping Services provides a skilled animal technician who ensures that animals in the associated research labs are cared for in a manner aligned with associated research protocols and genotyping.

Services provided include:

- Genotyping
- Colony maintenance and breeding (e.g. timed pregnancy)
- Procedures (e.g. tail bleeds, terminal bleeds, immunization)
- Fetal and neonatal manipulations (e.g. injections, intravital microscopy)
- Harvesting tissues
- Retrieve mice for experiments from animal facility

Genotyping Team

- Bruce Motyka, Academic Lead
- Thuraya Marshall, Animal Technician (maternity leave)
- Raven Kirschenman (maternity leave coverage)



*From left to right: Thuraya Marshall, Bruce Motyka
Not pictured: Raven Kirschenman*

Genotyping Services Users

For a list of Genotyping Services users, please see Appendix V on page 93.

Research Catalysts

Research Day

WCHRI's annual Research Day is our time to celebrate our successes and achievements. It brings our membership together to share common interests and research outputs on women and children's health, and is a great venue for our trainees to communicate their recent work, discuss their research and network with colleagues. All of our trainees are expected to present their research at Research Day and every WCHRI funded trainee prepares either a poster or oral presentation for judging by panels of WCHRI researchers.

Education and Mentoring for Students and Resident Trainees

Our trainees represent a significant investment of time as well as money. This investment is fundamental to our belief that research is integral to excellence in care. Research by WCHRI members will continue to provide innovative and novel ideas, forming the basis for advancement in care in our province only as long as our more junior researchers are guided and supported in their training. That is why WCHRI has developed numerous mechanisms by which to help our trainees throughout their programs and beyond. Some of these mechanisms are described below.

Lunch & Share Workshops

The students who are awarded studentship stipends (both graduate and summer students) attend a yearly Lunch & Share session, hosted and facilitated by WCHRI staff. The purpose of the sessions is to introduce the students to each other and to give them the opportunity to share their research programs with their peers. At these sessions, WCHRI staff also provides guidance on our program requirements, other WCHRI educational opportunities, and support for any issues that may arise for the students. The first of these Lunch & Shares was held in the summer of 2012 - it was very well attended and the feedback was encouraging. We have augmented the sessions to include more support and information to our students.

Workshops for Trainees

WCHRI has developed and hosted numerous workshops for our trainees on topics ranging from: how to complete a WCHRI grant application; how to prepare a PowerPoint presentation; how to carry out a systematic review; overviews of ethics requirements; how to write a research protocol, how to prepare a knowledge translation plan; and more. These workshops provide very practical, immediate solutions for some of the daunting issues that our students face during their tenure. We continue to develop these workshops according to feedback from our trainees as well as any other identified need.

Research Catalysts

Lunch & Learn Seminar Series

WCHRI launched a Lunch & Learn Series in 2012. The purpose of the series is to provide our members with a useful, practical and timely exposure to a range of topics important to their research.

Some of the workshops are tailored for trainees (graduate students, postdoctoral fellows, and residents), while others are more suitable for our junior and senior faculty. Attendance at the Lunch & Learns has been very high and it is evident from the feedback and attendance that these very practical courses are of great benefit to our members. The presentations are available to our members on our website along with links to key resources.

The schedule of Lunch & Learns that we have presented is shown in Appendix I on page 60.

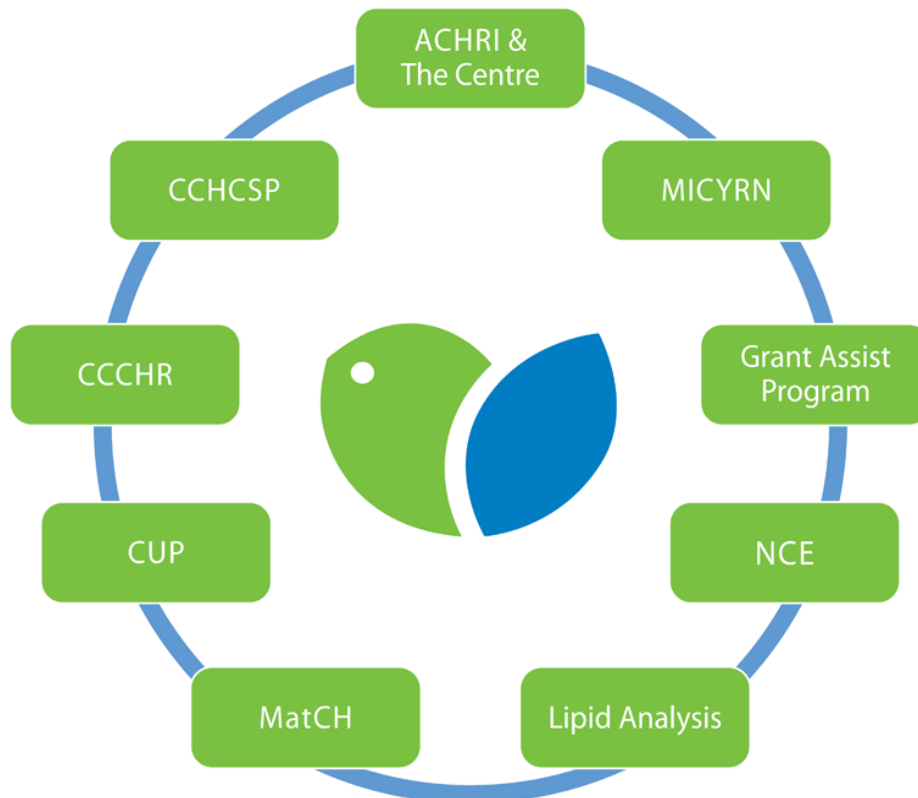
SPSS and Biostatistics Workshops

We have developed a four hour workshop to provide a basic introduction to a very popular program called SPSS (Statistical Product and Service Solutions). The course is delivered by WCHRI's Biostatistician Sung Hyun Kang. Over fifty of our trainees and researchers have since taken this course. We are now in the process of developing hands-on workshops, where those who have taken the introductory course can actually work on their own data analysis.

Partnerships, Collaborations and Leveraging

WCHRI collaborates with many other institutes and organizations that share our vision and commitment to improving the health outcomes of women and children through research excellence. We also partner with these institutions to provide our members with access to a growing variety of research services and support. In terms of financial support, many of these collaborations represent leveraging of our resources to provide shared resources to our members. Please see the following pages for a description of each of these partnerships.

These partnerships, collaborations and networking relationships are integral to the philosophy that pooling and sharing limited resources and infrastructure benefits all of our researchers.



Partnerships, Collaborations and Leveraging

Alberta Children's Hospital Research Institute for Child and Maternal Health & Alberta Centre for Child, Family and Community Research

WCHRI has a Memorandum of Understanding (MoU) with the Alberta Children's Hospital Research Institute for Child and Maternal Health ([ACHRI](#)) and the Alberta Centre for Child, Family and Community Research ([The Centre](#)). This MoU is a natural fit for us as its values greatly mirror our own. These values include:

- Fostering a culture of inquiry
- Creating a collaboration based on respect and accountability
- Building and sustaining excellence in collaborative endeavors
- Encouraging active participation and support in the development of the Child Data Centre (CDC)
- Shared responsibility for the positive relationship between all partners

As stated above, one main goal of the MoU is the development of the CDC. This facility will house academic research sets in one central location and increase access of this data to all researchers. WCHRI members are encouraged to both utilize and contribute to this service.

Canadian Child Health Clinician Scientist Program

The Canadian Child Health Clinician Scientist Program ([CCHCSP](#)) is a transdisciplinary training program for the next generation of clinician-scientists in child and youth health research in Canada. The CCHCSP recruits, trains and provides financial support for researchers and clinician-scientists who have an interest in child and youth health. A core curriculum delivers a common multidisciplinary language of research, while imparting professional skills and values. It provides opportunities for education and collaborative experiences with institutions and researchers across the CCHCSP. Research training is supervised by a research mentor and advisory committee and is structured to facilitate excellence in research with an interdisciplinary focus. Since our inception, WCHRI has partnered with CCHCSP in supporting these programs.

Community-University Partnership for the Study of Children, Youth, and Families

The Community-University Partnership for the Study of Children, Youth, and Families ([CUP](#)) is a unique collaboration between the U of A Faculty of Extension, community agencies, and organizations in and around Edmonton and across Alberta. CUP works to develop opportunities for researchers, service providers, and policy-makers to collaborate on research projects that advance knowledge, improve policies and practices and facilitate sharing information about child and family development.

Council of Canadian Child Health Research

The Council of Canadian Child Health Research ([CCCHR](#)) represents all academic health research centres across Canada with a focus on child and youth health. The CCCHR and its members support child health research, helping to ensure that all children and youth enjoy the benefits of improved health through the application of research findings. The Council promotes networking, collaborations and sharing of resources between each of the 17 hospitals/institutes in Canada which support child and youth health research. WCHRI is an active member of the CCCHR.

Partnerships, Collaborations and Leveraging

Grant Assist Program - Bridge Funding

The Grant Assist Program provides support for researchers and trainees at the U of A who are submitting applications for funding to Canadian Institutes of Health Research (CIHR). The goal of the initiative is to enhance the preparedness and quality of applications submitted to CIHR. Support includes delivery of feedback processes, bridge funding, workshops, resources, editing and general support. The project is supported by the Office of the Vice-President (Research) and Faculty of Medicine & Dentistry (FoMD).

In support of this initiative, WCHRI contributes bridge funding for CIHR applications with a primary focus on women and/or children's health and will be used to leverage additional funding from AIHS or other institutes and faculties.

See Appendix N on page 73 for the list of awardees and their projects.

Lipid & Lipid Metabolite Analysis

The Lipid & Lipid Metabolite Analysis service is a pay-per-use facility developed to assist basic and clinical researchers at U of A and affiliated institutions in measuring lipid-related compounds from a variety of sources. Lipids are of particular importance in some of today's most prevalent health issues: obesity, diabetes, nutrition, neuroscience, and cardiovascular disease. This service is supported by the Group on the Molecular and Cell Biology of Lipids and WCHRI and FoMD.

Services include:

- Quantitative analyses
 - Separation and measurement of fatty acids and total lipid classes by gas-liquid chromatography (GC)
 - Separation and measurement of bile acids, phospholipids, and total lipid classes by high-performance liquid chromatography (HPLC)
- Non-quantitative analyses
 - Lipoprotein profiling (of VLDL, LDL, and HDL) from plasma, cultured cell medium, and other sources by fast-protein liquid chromatography (FPLC)
 - Non-destructive separation and collection of lipoprotein classes (VLDL/LDL/HDL)
- Available on request
 - Customized analysis of other molecules by HPLC, GC, or mass spectrometry
 - High-resolution mass spectrometry-based lipid analysis (qualitative and quantitative) by LC-MS;

Lipids currently measured include cholesterol, triglycerides, phospholipids, fatty acids and cholesteryl esters. Addition of the mass spectrometer will allow measurement of many other lipids, with much lower detection limits than previously possible.

For a list of the lipid analysis equipment used by this program, please see Appendix U on page 92

Partnerships, Collaborations and Leveraging

Maternal and Child Health Graduate Program

In 2012, the Departments of Pediatrics, Medical Genetics, and Obstetrics and Gynecology, in partnership with WCHRI were the recipients of a new U of A interdisciplinary graduate student training program in Maternal and Child Health (MatCH). This multidisciplinary program represents a novel approach to the training of graduate students, as participating departments are uniquely positioned to provide cross pollination between key areas in the rapidly evolving bench to bedside to community, personalized medicine and knowledge translation focus of research in Alberta and Canada. The presence of WCHRI at the U of A was integral to the successful awarding of this program, as the Institute's vision and mission is seen as integral to the program's success.

Maternal Infant Child and Youth Research Network

The Maternal Infant Child and Youth Research Network ([MICYRN](#)) was founded in 2006 as a collaborative national initiative to build capacity for high quality clinical research in Canada. MICYRN links 17 participating academic health centres and hundreds of investigation teams across the country. The overarching goal of MICYRN is to empower the health research community to develop and implement solutions to issues affecting maternal, infant, child and youth health and health services.

MICYRN is focusing on improving data management standards and is encouraging the adoption of REDCap by its member institutes. Since WCHRI was the first organization in Canada to adopt REDCap we have significant experience in this area. In addition, WCHRI developed a version of REDCap for MICYRN members conducting regulated clinical trials. WCHRI also provides REDCap data management administration, support and training to MICYRN members.

Partnerships, Collaborations and Leveraging

Networks of Centres of Excellence (NCE) – Matching Funds

Translating Emergency Knowledge for Kids

WCHRI provides matching funds for several important research initiatives. One of these is a new (NCE) called TREKK (Translating Emergency Knowledge for Kids). TREKK, co-led by WCHRI researchers Dr. Shannon Scott and Dr. Lisa Hartling, was awarded \$1.6 million in funding from the NCE program, with WCHRI providing a smaller amount of matching funds. TREKK has established a strong network of emergency care providers across the country and the team has been very successful in producing high quality research in the realms of both clinical science and knowledge translation. Further, the network has fostered research collaborations, mentored junior investigators and developed a strong platform for knowledge translation activities. The work proposed through TREKK is a natural progression for this group. A unique strength of the TREKK work is the partnering of 36 community hospitals from across the country with the 13 pediatric tertiary care centers. This unique model will allow the team to identify the needs of front-line practitioners working in the community, and respond to those needs through knowledge synthesis activities. This is a highly relevant proposal with significant potential impact in terms of improvements to children's health outcomes, and enhanced health systems.

NeuroDevNet

NeuroDevNet, a Canadian Networks of Centres of Excellence (NCE), is a national initiative focusing on childhood brain development from both basic research and clinical perspectives. The Network, also supported by WCHRI and CIHR, is initially researching the impact of genes and/or the environment on three important developmental disabilities in children. NeuroDevNet works with its partners in academia, the community, not-for-profit sector, industry, and government, and across traditional disciplinary boundaries and sectors, to ensure generated knowledge is translated into tangible diagnostic, preventative, therapeutic, social, economic, and health benefits for all.

Impact on Policy

Over the last year, WCHRI has embraced several provincial, national and international initiatives becoming increasingly active with organizations directly impacting policy in Alberta. WCHRI is a key player within these organizations, which will lead to improved policy decisions with regard to research and health outcomes affecting women and children's health. Some of these are detailed below.

Canadian Institutes for Health Research - Strategy for Patient Oriented Research

The vision of the Strategy for Patient-Oriented Research (SPOR) is to demonstrably improve health outcomes and enhance patients' health care experience through integration of evidence at all levels in the health care system.

The goals to achieve this vision are to:

- create a collaborative, pan-Canadian process for identifying, establishing and addressing patient-oriented research priorities;
- establish an integrated, leading-edge pan-Canadian clinical research infrastructure along the full continuum of patient-oriented research;
- grow Canada's capacity to attract, train and mentor health-care professionals and health researchers, as well as to create sustainable career paths in patient-oriented research;
- strengthen organizational, regulatory and financial support for clinical studies in Canada and enhance patient and clinician engagement in these studies; and
- improve processes for the early identification of best practices, expedite their development and harmonization into guidelines for patient care and support their adoption by clinicians, care-givers and patients.

Patient-oriented research, the cornerstone of evidence-informed health care, refers to a continuum of research, from initial studies in humans to comparative effectiveness and outcomes research, and the integration of this research into the health care system and clinical practice. The goal of patient-oriented research is to better ensure the translation of innovative diagnostic and therapeutic approaches to the point-of-care, as well as to help the provinces and territories meet the challenge of delivering high quality, cost-effective health care. It involves ensuring that the right patient receives the right clinical intervention at the right time, ultimately leading to better health outcomes.

Ultimately, this national initiative is being established to advance research in humans through the development of core infrastructure. WCHRI is already a provincial and national leader in providing clinical research infrastructure and is poised to be a key support unit for women and children's health research in Alberta. We will continue to work strategically with our faculty and our provincial and national partners in the health system for the success of this initiative.

Impact on Policy

Strategic Clinical Networks (SCN)

SCNs are an Alberta Health Services (AHS) initiative for province wide teams that bring together the experiences and expertise of health care professionals, researchers, government and communities and patients and families to address the delivery of health care to Albertans. The SCNs are working to reshape health care in different areas to help AHS and its zones provide a patient-focused, quality health system that is accessible and sustainable for all Albertans. To help reshape health care each network will work towards:

- Improving the patient experience
- Ensuring care is available when it's needed
- Putting strategies in place to keep Albertans healthy
- Providing Albertans with the best health care for generations to come

WCHRI is involved in the development of the research strategies and directions of the Maternal Newborn Child and Youth Network.

Child Health and the Environment

Children, their health and its relationship with the environment, are an identified priority for the Alberta government and other agencies. The Children's Environmental Health Clinic initiative (ChEHC) at the U of A gathers intersectoral multi-stakeholder input to identify and prioritize local, relevant researchable issues or questions for a research program that links the environment and child health. ChEHC hosted two forums to engage various stakeholders and facilitate discussion on these important topics. The team identified four priority themes related to children's health and the environment:

- 1) Improve knowledge translation: improved awareness and understanding of environmental exposures and their impact on children's health;
- 2) Adopt the concept of healthy environments, focusing on vulnerable populations;
- 3) Study exposures; and
- 4) Work around concerns unique to Alberta.
- 5)

WCHRI continues to contribute to this group in an advisory and participatory capacity.

Support Platforms for Integrated Research (SPIR)

Some research projects only need support from a single service, such as biostatistics or study coordination, and WCHRI will continue to respond as needed, to the specific requirements of our members.

Complex projects, far reaching ideas, and collaborative initiatives, however, will benefit from a more integrated approach providing support from multiple angles and at various stages in a project's life span. It is this "bigger-vision" concept that led WCHRI to strategically consolidate processes and services involving clinical and health outcomes research activities under a single program, Support Platforms for Integrated Research (SPIR). The reorganization will allow for more intentional decision-making regarding resource allocation, bring efficiencies in process, and ensure the goals set forth by our funders, members, and patient populations are met.

SPIR aims to provide a coordinated platform to incent, facilitate, and support clinical and health outcomes research excellence related to women and children. This program can support observational and health outcomes research, clinical trials, knowledge translation, and community-based research, on a cost recovery or in-kind basis. Support will be provided through a combination of research infrastructure, strategic partnerships including patients and families, and leveraging research resources available in Alberta or through national programs.

Objectives

The overall objective of SPIR aligns with WCHRI's mission – to improve health outcomes for women and children through clinical and health outcomes research. In addition to leveraging existing research infrastructure and core services, three new support strategies will be developed to address gaps:

1. [a research capacity building strategy](#);
2. enhanced support for clinical trials and innovative clinical research designs; and
3. enhanced support for [health outcomes](#) research.

Each of these support strategies will be coordinated or integrated with existing research support cores, partnerships, and other local or provincial research supports.

Support Platforms for Integrated Research (SPIR)

Specific Aims for the Program

1. Increase capacity in areas of health research relevant to the needs of women and children in Alberta and aligned with strategic opportunities available to WCHRI members;
2. Enhance the 'culture of research' in our clinical and hospital settings;
3. Increase the number of research outputs among WCHRI members;
4. Increase the number of research award submissions and successful applications to local, provincial, and national granting agencies;
5. Enhance support for investigator-initiated and industry-sponsored clinical trials in women and children;
6. Enhance support for the development and application of innovative research designs relevant to women and children's health research;
7. Apply best practices and standards in the conduct of clinical and health outcomes research to ensure the safety and privacy of participants is maximized;
8. Increase the opportunities for women and children to participate directly in the design and conduct of research;
9. Enhance support for health outcomes research using existing and future electronic data sources.

This initiative is led by Dr. Lawrence Richer, Associate Director and Dory Sample, Clinical Research Program Manager. Under the guidance of the SPIR Advisory Committee (SPIRAC), an experienced group of researchers with broad perspectives, transparent funding priorities will be developed based on capacity, opportunity, and strategic priority.



Dory Sample

Support Platforms for Integrated Research (SPIR)

Knowledge Synthesis (Alberta Research Centre for Health Evidence - ARCHE)

Building a solid research proposal requires not only expertise in the specific health issue being addressed, but also a robust understanding of how the health issue is meaningful in a broader sense. This includes understanding the impact of incidence, cost factors, treatment options and challenges, and other considerations. Framing the research plan in the context of this larger picture both strengthens and directs activities through to the knowledge translation strategy. To help our members access this knowledge synthesis expertise, WCHRI entered into a formal partnership with [ARCHE](#) in 2012. Services for WCHRI members are available at a cost recovery or in-kind basis as a result of this partnership.

ARCHE serves as a resource to individuals and groups interested in evidence synthesis and conducting systematic reviews. ARCHE is a research entity under the Department of Pediatrics at the U of A. It was established in 2000 in order to create an evidence base for decision-makers.

The mandate of ARCHE is to:

- Produce high-quality evidence synthesis aimed at priority issues in health;
- Advance the methods of conducting randomized clinical trials and evidence syntheses;
- Provide training and mentoring to health professionals, trainees and students;
- Conduct knowledge translation activities to help inform clinical and policy decisions.

To accomplish the above mandate, ARCHE employs a multi-disciplinary team including epidemiologists, biostatisticians, librarians, project managers and research assistants.

ARCHE produces a variety of knowledge synthesis products including:

- systematic reviews;
- rapid reviews;
- health technology assessments;
- comparative effectiveness reviews;
- overviews of reviews.

ARCHE provides a number of educational initiatives including:

- A graduate-level course in systematic reviews;
- Workshops on critical appraisal, knowledge synthesis, knowledge translation and evidence-based medicine;
- Supervision of graduate students, medical students, residents and post-doctoral fellows.

Knowledge synthesis is defined by CIHR as “the contextualization and integration of research findings of individual research studies within the larger body of knowledge on the topic.” Knowledge synthesis takes different forms including systematic reviews, meta-analyses, overviews of reviews, and rapid reviews. ARCHE has extensive experience producing these knowledge syntheses for a variety of decision makers. ARCHE uses an integrated approach to knowledge synthesis and translation. ARCHE works directly with researchers, clinicians and policy makers to synthesize evidence required for well-informed decision making with regards to clinical practice, policy and future research. ARCHE has reviewed evidence for a range of question types (e.g. therapeutic efficacy and effectiveness, safety, diagnosis, prognosis, risk factors, and health services delivery) and clinical areas (e.g. emergency medicine, airways diseases, cardiovascular disease, mental health, orthopedics, pediatrics and alternative medicine).

Support Platforms for Integrated Research (SPIR)

Research Coordination

WCHRI offers a pool of research staff to meet investigators' needs for skilled, versatile research personnel on a part-time and/or temporary full-time basis. The team collaborates extensively with AHS and Covenant Health to offer services at U of A/Stollery Children's Hospital, Royal Alexandra Hospital/Lois Hole Hospital for Women, Grey Nuns Community Hospital and Misericordia Community Hospital. Research Coordinators are bound by regulations relating to ethical conduct of clinical research, including the International Congress on Harmonization Good Clinical Practice Guidelines (ICHGCP).

Customized services can include:

- Health Canada Clinical Trial Application assistance
- Ethics submission (including initial, renewals and amendments)
- Contract submissions and tracking
- Budget negotiation
- Study set-up
- Oversight of other sites as needed
- Budget tracking
- Recruiting study participants and obtaining informed consents
- Collecting data and biologic samples
- Data entry (and with the assistance of clinical informatics expertise, creation of simple databases in REDCap)
- Liaising with labs, pharmacies, X-ray and imaging facilities, and other medical facilities as needed by the study
- Maintaining regulatory documents
- Assisting with study close-out, and
- Archiving study documentation

Research Coordination Team

- Ronda Danchak
- Cheri Robert
- Debra Lieberman
- Lynell Aucoin
- Cathy Sheppard
- Jodie Pugh
- Lee-Ann Carroll
- Barb Neufeld
- Charlene Cars
- Faye Murdoch
- Heather Rylance
- Shirley Beauchamp
- Marilyn Thompson

Support Platforms for Integrated Research (SPIR)



Left to right, back row: Heather Rylance, Dory Sample, Shirley Beauchamp, Lee-Ann Carroll, Faye Murdoch, Ronda Danchak

Front row: Debra Lieberman, Cheri Robert, Sudeshna Bhattacharya

Not pictured: Marilyn Thompson, Charlene Cars, Lynell Aucoin, Cathy Sheppard, Jodie Pugh, Barb Neufeld

Clinical Research Coordination Projects

For a list of Research Coordination supported projects, please see Appendix Q on page 80.

Support Platforms for Integrated Research (SPIR)

Data Management and Informatics

WCHRI offers expertise in advanced Electronic Data Capture (EDC) and survey solutions to ensure researchers obtain high-quality, statistically sound and verifiable data. The data collection software and data management services meet the highest industry standards of quality, and comply with provincial and federal privacy legislation and with international Good Clinical Practice (GCP) regulatory standards, as well as Health Canada and U.S. Food and Drug Administration (FDA) study requirements.

WCHRI plays a key role in helping investigators minimize costs by training and supporting research assistants and graduate students in the use of the software. Studies that in the past would have required significant software development and support have been undertaken by undergraduates and graduate students after just a few hours of training.

WCHRI supports members in their research through the provision of information technology based services. This is primarily completed through the provision of core software products with custom application development and support where required. WCHRI encourages investigators to adopt common practices and standards as an aid to data quality.

Data management and informatics services include:

- Design of data collection tools
- Study implementation
- Data management planning
- Data coding
- Data entry, cleaning and query management
- Free access to REDCap
- Data reporting

Support Platforms for Integrated Research (SPIR)



Left to right: Stephen Walsh, Pam Marples, Rick Watts

Data Management and Informatics Team

- Rick Watts, Team Lead
- Pam Marples, Medical Informatics Specialist
- Stephen Walsh, Database Developer

Data Management and Informatics Utilized Tools

Please see Appendix O on page 74 for a list of the tools and software currently utilized by WCHRI.

Projects

For a list of supported projects, please see Appendix P on page 75.

Support Platforms for Integrated Research (SPIR)

Patient and Community Engagement / Qualitative Research / Knowledge Translation

WCHRI has partnered with the Community-University Partnership for the Study of Children Youth and Families, at the Faculty of Extension, to augment the capacity of WCHRI members to engage in Community-Based Research (CBR) and Qualitative Research. Under the academic leadership of Dr. Maria Mayan, this resource offers researchers training and support to successfully undertake studies using these approaches. Recently, consultation and support in developing knowledge translation plans have been added to the core activities.



Maria Mayan

Patient and Community Engagement

There is a growing consensus about the need to expand the role of patients or their primary caregivers) and other stakeholders (health care professionals, caregivers, policy and/or decision makers) in healthcare research. The active participation of the stakeholders has become more important as the funding agencies prioritize research that is relevant to the needs of the public and developed in the context of its application. Moving from a traditional role of a patient as a passive data point towards a role of a patient as an engaged partner creates a potential for more relevant research that acts in accordance with an ethical mandate to open and democratize the research process. Meaningful engagement of patients and other stakeholders provides a foundation for higher rates of enrollment and retention and improved translation of research results into practice and policy making.

WCHRI facilitates the engagement of researchers with other stakeholders as collaborators and partners by applying the approach of community-based participatory research. Community-based participatory research is based on the premise that each partner contributes specific strengths, knowledge and experience needed to design and conduct a research project as well as translate its results into policy and practice.

Services include:

- Community partnership brokering
- Grant preparation
- CBR design (including budgeting and ethics protocol)
- Data collection and analysis
- Manuscript preparation
- Patient – Community Engagement Training Program

Knowledge Translation

Knowledge translation is an essential requirement of research grant applications and should be an integral component of all research studies. Knowledge translation refers to “the dissemination of findings generated from research once a project is completed.” However, using research findings to inform knowledge users and ultimately to improve care, is often easier said than done. Integrated knowledge translation requires that researchers and identified knowledge users (patients, health care professionals, caregivers, policy and/or decision makers) collaborate throughout the research project. Through [SPIR](#), WCHRI is developing processes to assist with this collaborative approach. WCHRI support also includes assistance with the development of a knowledge translation and implementation plan.

Support Platforms for Integrated Research (SPIR)

Qualitative Research

Qualitative health research methods are unique in that they are inductive, and the data gathered is used to interpret and construct the meanings of participants' experiences (opinions, actions, behaviors, emotions, beliefs and values) associated with health and illnesses. WCHRI can assist members in the design, conduct, and interpretation of results, of this complex form of health research.



Tatjana Alvdj-Korenic

In the context of political, economic, social, and cultural realities, qualitative health research typically focuses on:

- Identifying health and social needs of participants;
- Examining processes of seeking healthcare, including barriers and access to care;
- Exploring health and illness experiences;
- Understanding trajectories of health and well-being, recovery of illness, or living with a disability;
- Exploring behaviours and experiences of professional care providers;
- Developing health care policy and programs;
- Identifying evidence-based practice and policy.

Services include:

- Grant preparation
- Research design (including budgeting and ethics protocol)
- Data collection and analysis
- Manuscript preparation

Patient and Community Engagement, Qualitative Research and Knowledge Translation Team

- Maria Mayan, Academic Lead
- Tatjana Alvdj-Korenic, Research Coordinator

Patient and Community Engagement, Qualitative Research and Knowledge Translation Core Users

For a list of CBR, Qualitative and KT Core users, please see Appendix V on page 93.

Support Platforms for Integrated Research (SPIR)

Health Outcomes

The ability to access existing administrative and clinical data sources remains a difficult proposition with complex requirements. Navigating this landscape in an effort to connect investigators to data sources is a new WCHRI initiative under [Support Platforms for Integrated Research \(SPIR\)](#).

Through SPIR, WCHRI will work toward enhancing health outcomes research through three key initiatives: partnering with Dr. Padma Kaul and Lab Alberta in the use of linked administrative data from Alberta Health and the Perinatal Registry (consisting of over 250,000 mother-child pairs); enhancing biostatistics support for health outcomes research among WCHRI members, and aligning with other groups, such as faculty, AHS, AIHS, and SPOR who have similar data access interests.

The first initiative, partnering with Dr. Kaul, an epidemiologist and associate professor in the Division of Cardiology, offers a unique opportunity to explore multiple research questions pertaining to maternal and child health, an area of research that is central to WCHRI's vision to improve the health outcomes of women and children in Alberta. The partnership is well established and has already resulted in collaborative research projects with several WCHRI members. Additional biostatistics support is also in place. The third initiative has begun, and successes in establishing avenues to data access will be shared with members on an ongoing basis.



Padma Kaul

Support Platforms for Integrated Research (SPIR)

Lois Hole Clinical Research Unit

The Lois Hole Hospital for Women clinical research unit is located in the Robbins Pavilion on the Royal Alexandra Hospital campus. This WCHRI service provides support to clinical research that occurs on site and is in collaboration with the FoMD's Department of Obstetrics and Gynecology.



Lois Hole Hospital for Women

Lois Hole Clinical Research Unit Team

- Selikke Janes-Kelley, Academic Lead
- Donna Dawson
- Cheryl Lux
- Winnie Savard
- Gloria Harrison
- Lara Ragnarsdottir

Projects

For a list of Lois Hole Clinical Research Unit supported projects, please see Appendix S on page 89.

Space

WCHRI has embraced a truly integrated approach in its use of facilities. By uniting multiple sites under a single organizational umbrella, WCHRI is able to embed itself in numerous sites across the U of A campus and the city of Edmonton. This maintains proximity to relevant clinicians, scientists, subjects, patients and services while avoiding duplication of infrastructure. The success of integrated facilities and dedicated support personnel enables world-class multidisciplinary scientific teams in critical areas of women and children's health to collaborate with clinicians and community partners. This collaborative team-based approach will also be invaluable in the training of the next generation of health-care professionals.

Edmonton Clinic Health Academy (ECHA)

The Edmonton Clinic Health Academy (ECHA) is home to a community of researchers, educators and students from across all faculties and outside academe, working to improve health outcomes for all Canadians. Building on the U of A's history of success in world-class research, education and patient care, faculties and stakeholders work side by side, sharing space, ideas and innovations. Many WCHRI groups call ECHA home including WCHRI Administration and the Grant Support, Research Coordination, Biostatistics and Research Informatics.



Katz Group-Rexall Centre for Pharmacy and Health Research

WCHRI's new biomedical research laboratories are located in the Katz Group-Rexall Centre for Pharmacy and Health Research Building. The facility incorporates lab space for electrophysiology, molecular biology and physiological measurement together with shared equipment which are used for studies of pathology and disease.



Lois Hole Hospital for Women – Women's Clinical Research Unit

The Women's Clinical Research Unit at the Lois Hole Hospital for Women will house a clinical and patient-related research facility that focuses on women and neonate's health research. The unit will be home to diverse clinical research studies and the Lois Hole Clinical Research Unit.



Stollery Children's Hospital Clinical Investigation Unit



To be located on the second floor (2E) of the Stollery Children's Hospital, the Stollery Children's Hospital Clinical Investigation Unit will be part of the new Stollery Children's Ambulatory Care, Education and Clinical Research Centre. This centre will be a consolidated, integrated interdisciplinary, family centered facility dedicated to excellence in research and clinical care.

Financials

Summary of Budget for 2014/15

Revenue

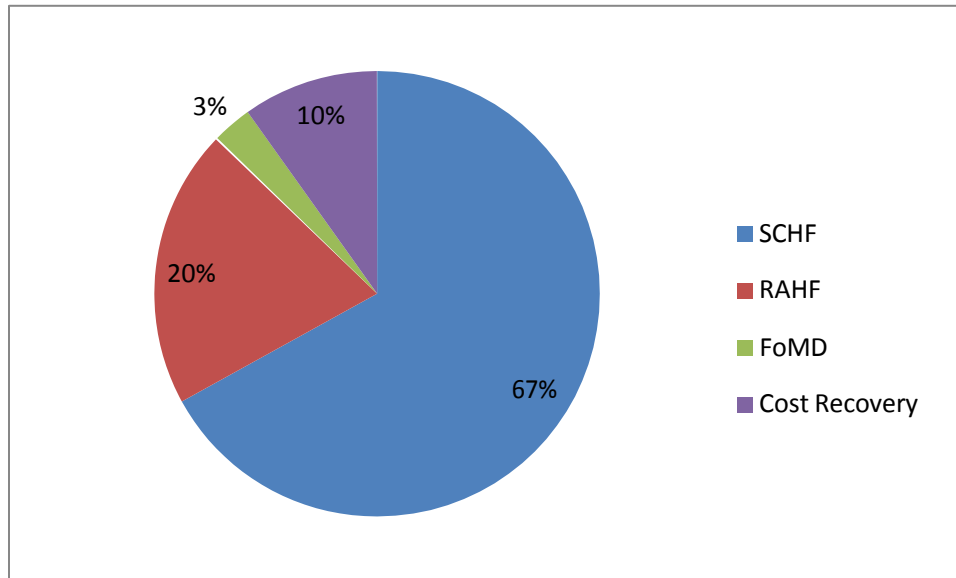
SCHF	\$4,639,550
RAHF	\$1,398,650
FoMD	\$207,377
Cost Recovery	\$647,800
TOTAL REVENUE	<u>\$6,893,377</u>

Expenditures

Research Grants	\$2,057,300
Research Catalysts	\$2,237,678
Support Platforms for Integrated Research	\$2,024,022
Administrative Support	\$574,377
TOTAL EXPENDITURES	<u>\$6,893,377</u>

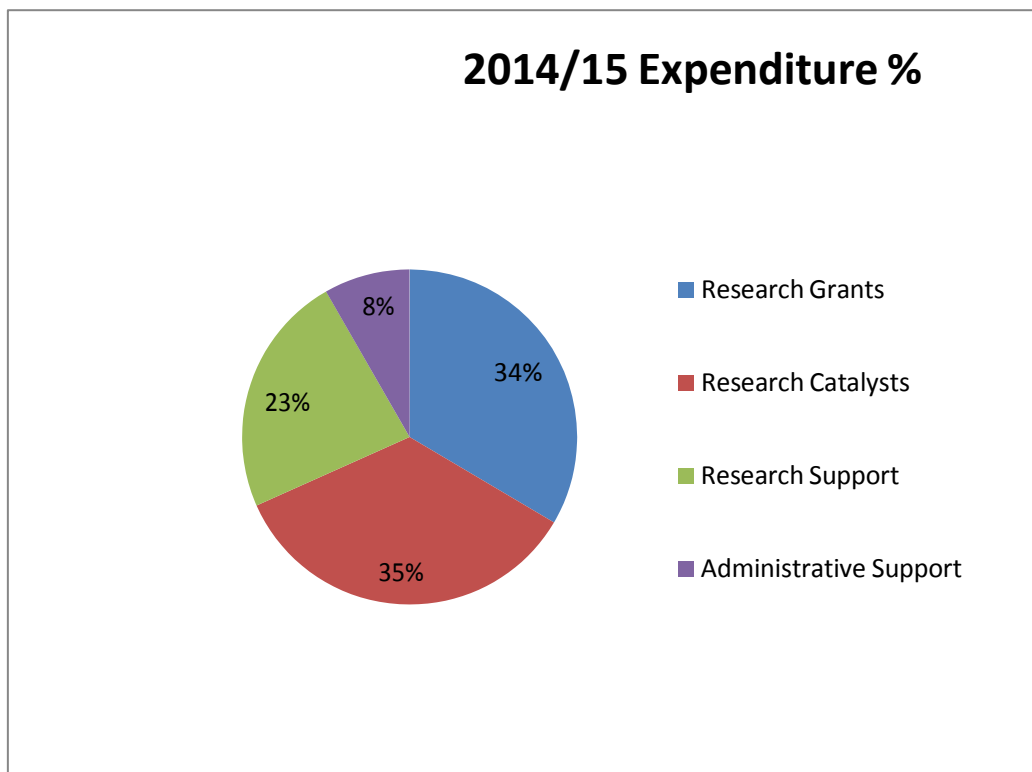
Financials

2014/15 Budgeted Revenue %



The revenue percentages reflect the ratio of researchers who align with child health compared to women's health which is approximately 4:1.

2014/15 Budgeted Expenditure %



Appendices

We have made every effort to ensure the following lists are complete and accurate. Please notify us of any inconsistencies or omissions.

Appendix A – Oversight Board Membership (as of September 30, 2014)

Glen Baker	Vice-President (Research), U of A (Delegate)
Sandra Davidge	Institute Director (non-voting)
Roger Epp	Provost & Vice President (Academic), U of A (Delegate)
David Evans	Vice-Dean of Research, FoMD, U of A
Bob Haennel	Health Services Council Representative
Mike House	President/CEO, SCHF
Tracy MacDonald	Senior Operating Officer, Stollery Children's Hospital, AHS
D. Douglas Miller	Dean, FoMD, U of A
Andrew Otway	President/CEO, RAHF
Joanna Pawlyshyn	Senior Operating Officer, Royal Alexandra Hospital & Sturgeon Community Hospital, AHS
Kathryn Todd	Senior Vice-President Research, AHS
Michael Walter	Head of School, Human Development, U of A

Ex Officio Members

Richard Balan	Stollery Children's Hospital Foundation representative
Dale Sheard	Royal Alexandra Hospital Foundation representative

Appendix B – Steering Committee Membership (as of September 30, 2014)

Glen Baker	Vice-President (Research), U of A (Delegate)
Sandra Davidge	Institute Director (non-voting) and Research Lead, Human Development, U of A
Karen Faulkner	Vice-President, SCHF
Susan Gilmour	Department Chair, Pediatrics, U of A
Tom Hobman	Vice-Dean of Research, FoMD, U of A (Designate)
Selikke Janes-Kelley	Executive Director, Women's Health, Royal Alexandra Hospital, AHS
Lawrence Richer	Associate Dean, Clinical Research, FoMD, U of A
Sharlene Rutherford	Vice-President, RAHF
Radha Chari	Department Chair, Obstetrics and Gynecology, U of A
Christine Westerlund	Director, Critical Care and Operative Services, Stollery Children's Hospital, AHS

Appendix C – Scientific Advisory Committee Membership (as of September 30, 2014)

Sandra Davidge	Institute Director
David Eisenstat	Division Director, Pediatric Hematology/Oncology/Palliative Care
John Greer	Professor, Physiology
Kathleen Hegadoren	Professor, Nursing
Kaysi Kushner	Associate Dean/Associate Professor, Nursing
Gary Lopaschuk	Professor, Pediatrics and Pharmacology
Maria Mayan	Assistant Director, Community-University Partnership
Lawrence Richer	Institute Associate Director, Associate Professor, Pediatric Neurology
Sue Ross	Cavarzan Chair, Professor, Obstetrics and Gynecology

Appendix D – Innovation Grants

Investigator	Project Title / Description of Support	Date
Project Stream		
R. Todd Alexander	Kids kidney stone therapies: development of preclinical models	2014
Fred Berry	Transcriptional regulatory networks controlling somite formation	2014
Stephane Bourque	Pre-clinical testing of resveratrol as an intervention for the programming of obesity by prenatal iron deficiency	2014
Emmanuelle Cordat	An animal model for understanding distal renal tubular acidosis	2014
David Eisenstat	Role of DLX transcription factors in enteric nervous system development: implications for Hirschsprung Disease	2014
Shokrollah Elahi	The immune pathogenesis of neonatal infection: relevant to digestive health	2014
Michael Hawkes	Development and validation of a humanized mouse model for the pre-clinical evaluation of vaccines against liver pathogens	2014
Mary Hitt	Preclinical studies of apoptosis induction for the treatment of granulosa cell tumors	2014
Anita Kozyrskyj	Association between early life fecal immune and metabolic biomarkers and overweight status at 3 years of age	2014
Andrew Mackie	Congenital Heart Adolescents Participating in Transition Evaluation Research: The CHAPTER III Study of Young Adolescents	2014
Heather McDermid	Susceptibility genes in human neural tube defects	2014
David Olson	Chemical identification of the uterine chemotactic factor for birth	2014
Andrew Waskiewicz	Integrated human and zebrafish studies of WNT signaling in pediatric ocular disease	2014
Community / Patient Stream		
Valerie Carson	Parents' role in establishing healthy physical activity and sedentary behaviour habits in young children	2014
Sandra Hodgetts	Disclosing their child's diagnosis of Autism Spectrum Disorder to others: family processes and perceived outcomes	2014
Dawn Kingston	Mental health of women and men seeking infertility treatment	2014
Rhonda Rosychuk	Differences in emergency department visits for asthma: does sex matter?	2014
Shannon Scott	An arts-based knowledge translation tool for pediatric chronic pain	2014
Breast Cancer Stream		
David Brindley	Cytomegalovirus infection and its role in breast cancer	2014
Larry Fliegel	Protein-protein interactions mediating metastasis in breast cancer cells	2014
Roger Leng	Regulation of p53 in breast tumors	2014
D. Alan Underhill	Epigenetic signatures of breast cancer progression	2014
Project Stream		
Klaus Ballanyi	Synaptic processes in inspiratory center inhibition by apnea-related anoxia and opioids	2013
David Brindley	Novel targets for overcoming resistance to chemotherapy and radiotherapy in breast cancer	2013
Thomas Churchill	Developing a prophylactic treatment for Necrotizing Enterocolitis in premature infants	2013
John Greer	Ampakine therapy to alleviate apnea of prematurity	2013
Lisa Hornberger	Mapping Congenital Heart Disease and the emission of developmental toxicants in Alberta, Canada: A geographic information systems (GIS) based framework for supporting interdisciplinary research and surveillance monitoring	2013
Rachel Khadaroo	Establishing clinically relevant biomarkers for the early diagnosis of Necrotizing Enterocolitis	2013

Investigator	Project Title / Description of Support	Date
Alan Underhill	PAX3 target gene networks in birth defects and pediatric Cancer	2013
Larry Unsworth	Engineering bioactive and bioresponsive nanoscaffolds for enhancing neuronal survival in an animal model of perinatal brain injury	2013
Rachel Wevrick	The dopamine reward system in a mouse model of Prader-Willi Syndrome	2013
Toshifumi Yokota	Multi-exon skipping therapy for Duchenne Muscular Dystrophy	2013
Community / Patient Stream		
Kim Adams	Using robots to assess skills and access play and problem solving for children with severe disabilities	2013
Deryk Beal	Genetic contributions to developmental stuttering	2013
Oana Caluseriu	Investigating the cause of rare disorders in children: a pilot study for a personalized practice for families in pediatric genetics	2013
Sarah Curtis	A systematic review of screening instruments for children at risk of Posttraumatic Stress Disorder	2013
Lesley Mitchell	Can we reduce central venous catheter (CVC) replacements in children with Cancer? A prospective cohort study of non-invasive screening for Venous Thrombosis in pediatric Oncology patients with CVC Dysfunction	2013
Jacqueline Pei	Working memory training impacts on FASD and preterm children	2013
Nicole Pitre	Mothering in the light of past interpersonal violence	2013
Craig Steinback	Mechanisms of sympathetic hyperactivity in hypertensive pregnancies	2013
Michael van Manen	Exploring young and adolescent children's experiences of living with a ventricular assist device	2013

Awardees prior to 2013 program update

Investigator	Project Title / Description of Support	Date
Joanna MacLean	Longitudinal cardio-respiratory function in the SAD mouse model of Sickle Cell Disease	2012
Joanna MacLean - Clinical Care	Cardio-respiratory patterns in early life and their relationship to cardio-respiratory variability in later life	2012
Katerina Maximova	Understanding the role of remnant lipoproteins in the development of childhood obesity and pathogenesis of subclinical atherosclerosis	2012
Sujata Persad	Nitrofen, a novel treatment strategy to reduce breast cancer invasiveness: A preclinical pilot study	2012
Gonzalo Garcia Guerra	Pediatric remote ischemic pre-conditioning prior to complex cardiac surgery: the PREP pilot trial	2012
Catherine Morgan	Preoperative and intraoperative renal oxygen saturation as predictors of AKI in children undergoing cardiopulmonary bypass	2012
Gwen Rempel	School-age children with moderate to severe congenital heart disease: A qualitative study to elicit stories about everyday life from the child with congenital heart disease and their school-age siblings	2012
Dawn Kingston	Barriers and facilitators of psychosocial assessment in pregnant and postpartum women and their health-care providers	2012
Ellen Toth	An assessment of prevalence and clinical care of Type 2 Diabetes in Albertan children	2012
Edmond Lou	Ultrasound imaging to quantify the severity of scoliosis without exposure to harmful radiation	2012
Joanne Lemieux	Insight into colonization mechanism of Neisseriales from study of pili proteases	2012
Gregory Tyrrell	A plasminogen binding peptide as a group B streptococcal vaccine candidate	2012
Heather McDermid	The role of the gene Arhgap 19 in neurological development	2012
Ordan Lehmann	A pathway to therapy for congenital eye disease	2012
Shairaz Baksh	Analysis of the Expression of the Pro-apoptotic Protein, MOAP-1, in Pediatric Leukemias	2011

Investigator	Project Title / Description of Support	Date
Monica Gorassini	Intensive Motor Training after Perinatal Stroke to Enhance Walking	2011
Denise Hemmings	Novel mechanisms of estrogen-induced vascular adaptation during pregnancy	2011
Sarah Hughes	The Role of the Merlin Tumour Suppressor in Post-Transcriptional Regulation	2011
Roger Leng	Role of UBE4B in Medulloblastoma	2011
Rhonda Rosychuk	Sex differences in Emergency Department Visits for Atrial Fibrillation/Flutter: Do women and men differ in their access to care	2011
Richard Thompson	Novel Characterization of Ventricular Mechanics and Tissue Properties determined Non-Invasively in Patients with Repaired Tetralogy of Fallot	2011
Michael Walter	Examination of Effectiveness of EGFR and VEGF Inhibition on FOXC1 Activity in Breast Cancer	2011
Rachel Wevrick	The Prader-Willi Syndrome Protein Magel2 in Childhood Obesity	2011
Eytan Wine	Intestinal Epithelial Cell Extrusion in Pediatric IBD: A Key to Unraveling Disease Prognosis and Pathogenesis	2011
Todd Alexander	Delineating the Molecular Mechanism Mediating Hypercalciuria	2010
Francois Bolduc	Drosophila Model for Understanding the Genetic Basis and Treatment of Angelman Syndrome	2010
Bryan Dicken	The Use Vasopressin in the Resuscitation of Neonates with Hypoxia-Reoxygenation Injury: a Randomized Blind Controlled Trial in the Swine Model of Neonatal Hypoxia-Reoxygenation	2010
YangXin Fu	Expression and Functional Role of GUCY1B3 in Ovarian Cancer	2010
Gregory Funk	Reducing the Respiratory Depressant Actions of Opioids by Targeted Inhibition of Opioid-Induced Glial Activation	2010
Ing Swie Goping	Predictive Markers for Taxane Responsiveness in Breast Cancer	2010
Andrea Haqq	Dietary Macronutrient Regulation of Active Ghrelin Levels in Children with Prader-Willi Syndrome (PWS)	2010
Lisa Hartling	Qualifying Bias in Randomized Controlled Trials and Systematic Reviews of Key Neonatal Interventions	2010
Marilyn Langevin	Relationship between Cerebral Oxygenation and Reading Fluency in Stuttering and Non-Stuttering School-Age Children: A Near Infra-red Spectroscopy Pilot Study	2010
Andrew Mackie	Novel Clinic-based Transition Intervention for Youth with Congenital Heart Disease	2010
Bryan Mitchell	Studies of the Mechanisms Leading to Term and Preterm Parturition	2010
Lindsay Ryerson	Prophylactic Peritoneal Dialysis Decreases Time to Achieve a Negative Fluid Balance After the Norwood Procedure—A Randomized Controlled Trial	2010
Lisa Hornberger	Anatomical and Functional Predictors of Fetal Lung Hypoplasia	2010
	The Evolving Role of First Trimester Fetal Echocardiography	2009
Sandra Davidge & Jason Dyck	The impact of intrauterine growth restriction on the early development of cardiovascular and metabolic dysfunction during diet-induced obesity	2009
Sukhdeep Dulai	The effect of liposomal lidocaine on perceived pain in children during percutaneous interosseous pin removal in the outpatient setting: A triple blinded, randomized placebo-controlled clinical trial	2009
Tarek El-Bialy	Effect of non-viral vector loaded basic fibroblast growth Factor (bFGF) gene therapy and therapeutic ultrasound on mandibular growth modification for treatment of obstructive sleep apnea in children	2009
Catherine Field	Assessing folate status early in pregnancy; a pilot project of APrON	2009
Manjula Gowrishankar	The Utility of serum cystatin C measurement in the assessment of renal function in children with Solid organ transplantation	2009

Investigator	Project Title / Description of Support	Date
Jia Li	The effects of dopamine and in combination of a beta3-adrenoceptor antagonist SR 59230A on systemic and regional (myocardial, cerebral and splanchnic) oxygen transport in newborn lambs after cardiopulmonary bypass--A pilot from bedside to bench and back to bedside	2009
Andrew Mackie	Risk factors for loss to follow-up among children and young adults with congenital heart disease: A Mixed methods approach	2009
Heather McDermid	A mouse model for testing Arhgap 19 as a candidate susceptibility gene for neural tube defects	2009
Eric Parent	Full Torso Surface Topography Measurements for the Management of Scoliosis: Reliability, responsiveness and correlations with radiographic measures of cure severity	2009
Lawrence Richer	Single-blind, placebo-challenge study of intravenous fluid hydration in the management of pediatric migraine in the Emergency Department	2009
Edythe Tham	Novel imaging techniques to determine the late effects of anthracycline toxicity on myocardial function in cancer survivors	2009
Bernard Thebaud	Therapeutic potential of Angiotensin Converting Enzyme 2 (ACE2) in experimental chronic lung disease of prematurity	2009
Justine Turner	Exogenous Glucagon-Like Peptide 2 to Promote Intestinal Adaptation in Neonates with Short Bowel Syndrome: Preliminary Investigations in Piglets	2009
Andrew Waskiewicz	An integrative approach to identifying genetic causes of congenital Strabismus	2009
Lori West	An Evaluation of an Online Support Network for Parents of Children with Heart Transplants	2009
Jeffrey Smallhorn	Influence of Preterm Delivery and Bronchopulmonary Dysplasia on Normal maturational Changes in Myocardial Function - Immediate and Short Term Differences measured by Tissue Doppler Echocardiography	2009
Tarek El-Bialy	Effects of Ultrasound and Local Growth Hormone Injections on Lower Jaw Growth in Rats	2008
Cara Dosman	Effect of Oral Iron Supplementation on Sleep in Children with Restless Legs Syndrome: A Randomized Placebo-Controlled Trial	2008
Po-Yin Cheung	The Effect of Milrinone on Regional Blood Flows in Neonates with Congenital Heart Defects prior to Cardiac Surgery	2008
Emmanuelle Cordat	Cellular Characterization of a New Band 3 Mutation causing Distal Renal Tubular Acidosis and Hereditary Spherocytosis	2008
Sarah Curtis	The VISION Study: Variation in Success of Intravenous Placement with Observation using New Techniques	2008
Jeff Fuller	Quantification of Human Papillomavirus Oncogene mRNA Expression as a Predictor of Cervical Cancer Progression	2008
Geoff Ball	One Size Does Not Fit All: Partnering with Parents and Clinicians to 'Set the Agenda' for Pediatric Weight Management	2008
Thierry Lacaze	Transcutaneous Bilirubinometers in the Community and the Reduction of Morbidity associated with Jaundice: A Clustered Randomized Controlled Trial	2008
Hien Huynh	Prevalence of Celiac Disease in Children with Inflammatory Bowel Disease	2008
Lisa Hartling	Music to Reduce Pain and Anxiety in the Pediatric Emergency Department: A randomized Controlled Trial of Children 3-6 years undergoing Intravenous Placement	2008
Denise Hemmings	The Placenta as a Viral Reservoir: Increased Potential for Congenital Cytomegalovirus Infection	2008
Chloe Joynt	A Pilot Study to Determine if Teaching Crisis Resource Management Skills Improves Resuscitation Performance and Retention in Pediatric Residents	2008
Sujata Persad	Molecular and Structural Alterations of the Oesophageal Epithelia in Pediatric Eosinophilic Oesophagitis	2008
Roger Leng	Regulation of TAp73 by Pirh2 in Medulloblastoma	2008
Catherine Morgan	The Role of Inflammatory Mediators in Acute Kidney Injury following Cardiopulmonary Bypass in Children	2008

Investigator	Project Title / Description of Support	Date
Rabin Persad	Prevalence of Gastroesophageal Reflux Symptoms in Pediatric and Adult Patients with Cystic Fibrosis at Stollery Children's and the University of Alberta Hospitals 2008-2009	2008
Carmen Rasmussen	Diffusion Tensor Magnetic Imaging in Children with Tourette Syndrome	2008
Gregory Korbitt	Repopulation of Decellularized Human Aortic Valves with Umbilical Cord derived Endothelial Cells	2008
Shannon Scott	Understanding Storytelling as a Knowledge Transfer Technique for Parents	2008
Gina Rayat	Co-culture of Newborn Pig Islets with Bone Marrow and Sertoli Cells to Promote Long-term Islet Function with Immunosuppressive Drugs	2008
Bernard Thebaud	Isolation, characterization and Therapeutic Potential of Lung Alveolar Progenitor Cells	2008
Suzanne Tough	Examining the Effects of Breastfeeding Difficulties on Postpartum Depression: Healthy Mothers, Healthy Families	2008
Sunita Vohra	Active surveillance of Serious Adverse Events Associated with Pediatric Complementary and Alternative Medicine	2008
Edward Tredget	Signaling Cross-talk between Vitamin D and TGF-beta has Therapeutic Potential in Paediatric Burn Wound Healing	2008
Lori West	Molecular Genetic Analysis of Human B Lymphocytes Repertoire Specific to ABO Blood Group Antigen	2008

Emerging Research Team Grant Competition

In 2009, FoMD and AHS announced the second competition of an Emerging Research Team Grant Program. The competition reflected the increasing emphasis that has been placed on multi- and trans-disciplinary health research, which allows researchers to target complex health issues that cannot easily be addressed by researchers working in isolation.

This funding is for the creation and development of new collaborative research teams with the potential to address important health issues. It is accompanied by the expectation that these teams will become successful in future multidisciplinary competitions for infrastructure and/or operating funds. Projects were funded at up to \$100,000/year for a maximum of three years.

For the 2009 competition, five grants were awarded for a total of nearly \$1,500,000. Applications were evaluated by a committee of 15 researchers and clinician scientists, spanning the health science faculties at the U of A. See Appendix E below for a complete list.

Appendix E – Emerging Research Team Grants

Investigator	Project Title / Description of Support	Date
Rhonda Bell	Sugar mommies	2009
Sunita Vohra	Mindfulness based stress reduction: a non-pharmacological approach to support youth with mental health concerns	2009
Geoff Ball	Pediatric weight management: advancing the evidence in family-centred care	2009
Darryl Adamko	Improved diagnosis and management of pediatric respiratory diseases using metabolomic analysis of urine	2009
Gina Higginbottom	Exploring the maternity experiences of immigrant women	2009

Appendix F – Graduate Students

Student	Supervisor / Mentor	Project Title / Description of Support	Date
Karin Carias	Rachel Wevrick	Studies of MAGEL2, an autism, childhood obesity and Prader-Willi syndrome candidate gene	2014
Katelynn Crick	Lisa Hartling	Project Title: Enhancing the Usability and Uptake of Systematic Reviews in Clinical Practice: Examining the Ratio of Means as an Alternative Summary Measure to Standardized Mean Differences in Meta-Analyses	2014
Rachel Flynn	Shannon Scott	Evaluating the use of LEAN as a quality improvement program for pediatric procedural pain management	2014
Tamara Germani	Lonnie Zwaigenbaum	Development of a Participation Classification System for Preschool Children with Autism Spectrum Disorders	2014
Christen Klinger	Joel Dacks	Comparative Genomic and Functional Analysis of Invasion-Related Trafficking Machinery in Apicomplexan Parasites	2014
David Lim	Justine Turner	'Towards the understanding and advancement of trophic peptide factors glucagon-like peptide 2 and epidermal growth factor in promoting intestinal adaptation in intestinal failure: actions and mechanisms studied in neonatal piglet models of surgical short	2014
Megan Lukasewich	Cindy Jardine	The impact of participatory approaches to research on Aboriginal youth's health and wellness	2014
Manoj Parmar	Hasan Uludag	siRNA delivery using lipid-substituted polymers in breast cancer therapy	2014
Ruwani Seneviratne	Silvia Pagliardini	Ventilation during sleep: the functional role of expiratory activity in infants and rodents	2014
Hoda Soleymani Abyaneh	Afsaneh Lavasanifar	Nanotechnology for enhanced chemotherapy in triple Negative Breast Cancer	2014
Amenah Toosi	Dawn Kingston	Disparities in child health status between migrant and Canadian-born low-income families	2014
Geetha Venkateswaran	Sujata Persad	Osteosarcoma Progression: Role of Beta-catenin/Active Beta-catenin	2014
Sonya Widen	Andrew Waskiewicz	The Role of Wnt Signaling in Pediatric Blinding Disorders	2014
Deenaz Zaidi	Eytan Wine	Alterations in intestinal epithelial cell extrusion and microbial virulence in pediatric inflammatory bowel diseases.	2014
Kirby Ziegler	Darrell Underhill	Defining PAX3 target gene networks and their dysregulation in birth defects and pediatric cancer	2014
Jillian Avis	Geoff Ball	The Resource Information Program for Parents on Lifestyle and Education (RIPPLE)	2013
Stephanie Kowal	Cindy Jardine	Risk communication and vaccination uptake by recent immigrant mothers of Edmonton	2013
Devishree Krishnan	Todd Alexander	Delineating the mechanism linking sodium ingestion to urinary calcium excretion	2013
Joshua Lee	Toshifumi Yokota	Cocktail antisense-mediated exons 45-55 multi-exon-skipping for Duchenne Muscular Dystrophy	2013
Chloe Luck Gibson	Rachel Wevrick	Feeding pathways in mouse models of Prader-Willi Syndrome	2013
Arnaldo Pere	Geoff Ball	Understanding family engagement in tertiary pediatric weight management care	2013
Erica Roberts	Kate Storey	Exploring the role of the APPLE School Administrator in affecting organizational change and knowledge brokering	2013

Student	Supervisor / Mentor	Project Title / Description of Support	Date
Humam Saltaji	Carlos Flores Mir	What is the association between methodological characteristics and treatment effect estimates in clinical trials in pediatric dentistry and orthodontics?	2013
Tara R. Stach	Ordan Lehmann	The genetics of Ocular Fissure Closure	2013
Sarah Treit	Christian Beaulieu	MRI of brain development in Fetal Alcohol Spectrum disorders	2013
Ning Yang	Ing Swie Goping	The role of the Bcl-2 protein Bad in mammary gland development and carcinogenesis	2013
Yong Zhang	Gregory Funk	Shining light on the role of astrocytes and ATP in the ventilatory response to low oxygen	2013
Alicia Pawlowski	Anita Kozyrskyj	Maternal early life trauma and wheeze in young children: Could there be a connection?	2012
Anra Lee	Gwen Rempel	Investigating risk versus protective influences in the lives of adolescents diagnosed with cancer: A mixed methods study	2012
D. Eric Chalmers	Edmond Lou	An Artificial Intelligent System to Optimize the Brace Treatment for Scoliosis.	2012
Erin D. Lewis	Catherine Field	The role of maternal dietary choline intake during suckling on immune system development and function in the offspring.	2012
Ganesh Venkatraman	David Brindley	Role of lysophospholipids in breast cancer chemo-resistance, progression and metastasis.	2012
Jamie L. Zagozewski	David Eisenstat	The Role of Dlx homeobox genes in retinal cell differentiation	2012
Jane W. Ng	David Olson	The role of epigenetics in linking maternal-fetal health to child outcomes.	2012
Joseph J.P. Pagano	Richard Thompson	Non-invasive measurement of myocardial function and tissue properties in patients with repaired tetralogy of Fallot.	2012
Katherine R. Wyper	Jacqueline Pei	The Neuropsychological Profile of High Risk Youth with FASD	2012
Katrina V. Kully-Martens	Carmen Rasmussen	Cognitive Habilitation Using Math Intervention for Children with Fetal Alcohol Spectrum Disorder	2012
Kimberly M. Derkatz	Lori West	The Role of CD22 Signaling in the Induction of B-cell Tolerance after ABO-Incompatible Infant Heart Transplant	2012
Nubia I Zepeda	YangXin Fu	Understanding the role of Notch signaling in ovarian cancer stem cells.	2012
Raie T. Bekele	David N. Brindley	Understanding the mechanism of tamoxifen resistance in breast cancer	2012
Sahin Basak	Hasan Uludag	Development of a Non-Viral Delivery System for siRNA in Treatment of Childhood Leukemias	2012
Satvinder Kaur Ghotra	Jerome Yager	Evaluation of Health Related Quality of Life and Its Determinants in Survivors of Pediatric Stroke	2012
Christelle Lazareno-Saez	Joanne Lemieux	Structural Study of Rhomboid Peptidases	2011
Ensaf Almomani	Emmanuelle Cordat	Molecular Mechanisms Causing Distal Renal Tubular Acidosis	2011
Julia Devos	Rachel Wevrick	The Role of Magel 2 in Childhood Obesity	2011
Mandy Archibald	Shannon Scott	The Use of Narratives and Arts-based Methods as KT Tools	2011

Student	Supervisor / Mentor	Project Title / Description of Support	Date
Meghan Riddell	Sandra Davidge	The Role of the Stroma in the Pathogenesis of IUGR	2011
Rami Abou Zeinab	Fiona Bamforth	Role of Pirh2 in the Regulation of TAp73 in Brain Tumors	2011
Ali Abdalvandi	Sandra Davidge	The Effect of Oxidative Stress on MMPs and ET-1 on Vascular Dysfunction in Preeclampsia	2010
Breanne Landry	Hasan Uludag	Polymeric siRNA Delivery System for Treatment of Childhood Leukemias	2010
Carley Piatt	Joanne Volden	Development of Mathematical Cognition in Children with Autism Spectrum Disorder	2010
Christopher Skappak	Darryl Adamko	The Role of CD4+ Memory T Cells in Zvireus Induced Airway Hyperreactivity (AHR)	2010
Dana Olstad	Kim Raine	'Catalyzing Adoption of the Alberta Nutrition Guidelines for Children and Youth (ANGCY) in Recreational Facilities'	2010
Elise Watkins	Eric Parent	'Evaluating Methods of Recruiting Community Pregnant Women for Community-based Epidemiological Research'	2010
Naheed Hosan	Wendy Høglund	Children's Peer Group Characteristics: Implications for Childhood Depression and Anxiety	2010
Rajesh Stanislaus Alphonse	Bernard Thebaud	'Experimental Therapies to Prevent Pulmonary Hypertension and Promote Lung Vascular Growth in Congenital Diaphragmatic Hernia'	2010
Robertino Mateo	Ordan Lehmann	Determining the cause of Ocular Anomalies in First Nations Families	2010
Anthuvan Rajesh Stanislaus Alphonse	Bernard Thebaud	Experimental therapies to prevent pulmonary hypertension and promote lung vascular growth in congenital diaphragmatic hernia	2009
Carley Piatt	Joanne Volden	Development of mathematical cognition in children with Autism Spectrum Disorder	2009
Constance Rebecca North	Ian Colman	The Relationship between Early Cognitive Development and Depression in Adolescence	2009
Debra Olmstead	Shannon Scott	Individual determinants shaping nurses' management of children's procedural pain	2009
Erin Archibald	Carol Boliek	Respiratory, laryngeal and articulatory adjustments to changes in vocal loudness in typically developing children and children with spastic-type cerebral palsy	2009
Jennifer Zwicker	Greg Funk	Role of Gila in Modulation of preBotC Inspiratory Rhythm Generating Networks	2009
Michele Hamm	Terry Klassen	Knowledge translation in reducing the risk of bias in child health trials	2009
Ming Ye	ASenthilSelvan	Prevalence and risk factors for asthma in young aboriginal children	2009
Naheed Hosan	Wendy Høglund	Children's peer group characteristics: implications for childhood depression and anxiety	2009
Randi Gombos	Denise Hemmings	Cytomegalovirus Infection, Pregnancy and Vascular Dysfunction	2009
Salma Bahreinian	Geoff Ball	Does Chronic Stress Predict the Development of Asthma in Children?	2009
Tyler Pittman	Anita Kozyrskyj	The association between neighborhood stressors and asthma prevalence of school children in Winnipeg	2009
Vinitha Ravindran	Gwen Rempel	Post hospitalization parenting/caregiving processes for families in India with children who have sustained burns	2009

Appendix G – Summer Students

Student	Supervisor / Mentor	Project Title / Description of Support	Date
Colin Andrews	Pagliardini, Silvia	recruitment of abdominal muscle activity and its contribution to ventilation in postnatal rats	2014
Nikytha Antony	Macleon, Joanna	Preterm birth, bronchopulmonary dysplasia and asthma in middle childhood	2014
Nicholas Arrotta	Rowe, Brian	Pediatric Bicycling Injury Prevention Program: understanding helmet wearing and injury profiles	2014
Sarah Aziz	Tyrrell, Gregory	Identification of pertactin-deficient Bordetella pertussis isolates from clinical cases of pertussis in Alberta	2014
Jasmine Bal	Fedorak, Richard N.	Improving knowledge regarding reproduction and pregnancy in inflammatory bowel disease: from bench to bedside	2014
Bo Bao	Yokota, Toshifumi	Exons 45-55 multi-exon-skipping in a dystrophic mouse model of Duchenne Muscular Dystrophy	2014
Amanda Cao	Hemmings, Denise G	Control of blood brain barrier and vascular tone in cerebral arteries by sphingosine 1-phosphate	2014
Nathan Chu	Funk, Gregory	The role of nucleoside transporters and adenosine in the hypoxic ventilatory response	2014
Jennifer Croden	Ross, Sue	Availability and marketing of over-the-counter remedies for menopause symptoms	2014
Ghazal Danesh	Pasdar, Manijeh	Functional significance of P53-plakoglobin interactions in ovarian cancer	2014
Fang Ding	Zwaigenbaum, Lonnie	Early behavioral markers of ASD: Novel risk classification using decision tree models.	2014
Brittany Lissinna	Yang, Jaynie	Motor learning on a split-belt treadmill in young children	2014
Jake Mandziuk	Casey, Joseph R.	Identification of small molecules as therapeutics for corneal dystrophies	2014
Yael Mansour	Bourque, Stephane	Cardiovascular consequences of prenatal iron deficiency: early mechanisms and therapeutics	2014
Qaasim Mian	Cheung, Po-Yin	Does positive pressure ventilation in preterm babies ventilated at birth cause brain injury?	2014
Zhiyuan Ou	Wine, Eytan	Breaking the barrier: host-microbial interactions in pediatric inflammatory bowel diseases	2014
Rebecca Peat	Lopaschuk, Gary	Role of protein acetylation in controlling energy metabolism in the newborn heart	2014
Iyla So	Field, Catherine	Effect of feeding a mixed choline diet on immune development during suckling	2014
Raheem Suleman	Vohra, Sunita	Pediatric Integrative Medicine (PIM) Trial: usual care in pediatric oncology	2014
Doulin Sun	Davidge	Mechanism of resveratrol action to improve cardiovascular function of intrauterine growth restricted rate offspring on a high fat diet	2014
Alexandria Tiffinger	Waskiewicz, Andrew J	Retinal Birth Defect Causality: the role of Growth Factor Bone Morphogenetic Protein 3	2014
Michelle Young	Lou, Edmond	Using 3D ultrasound images to guide insertion of pedicle screws during scoliosis surgery: a preliminary study	2014
Kirsten Arnold	Hughes, Sarah	Merlin regulation of proliferation via post-transcriptional regulation	2013
Ross Ballantyne	Mackie, Andrew	Adults helping children: descriptive study of quality of life for adults with CHD to inform care of children with CHD	2013

Student	Supervisor / Mentor	Project Title / Description of Support	Date
Heather Bronson	Olson, David	Leukocyte recruitment to the uterus at parturition	2013
Nathan Chu	Funk, Gregory	Defining the signaling pathways through which ATP stimulates breathing	2013
Alexandru Cojocaru	Churchill, Thomas	Developing a continuous perfusion system for clinical intestinal preservation	2013
Viane Faily	Mager, Diana	How do parents and child's perceptions of quality of life affect dietary adherence to the gluten free diet and nutrition	2013
Emma Hjartarson	Davidge, Sandra	Mechanisms for impaired cardiovascular adaptations to pregnancy at an advanced maternal age	2013
Joshua Kim	Yokota, Toshifumi	Exons 45-55 multi-exon-skipping for Duchenne muscular dystrophy	2013
Christen Klinger	Dacks, Joel	Characterization of AP5 in apicomplexan parasites	2013
Andrew McCutcheon	Higginbottom, Gina	Immigrant women's experiences in maternity care services in Canada: training in narrative synthesis	2013
Qaasim Mian	Cheung, Po-Yin Co-Supervisor: Schmolzer, Georg	Does positive pressure ventilation in preterm babies ventilated at birth cause brain injury?	2013
Christopher Novak	Zwaigenbaum, Lonnie	Prospective analysis of parent concern in infant siblings with and without ASD	2013
Jeffrey Odenbach	Curtis, Sarah	Systematic review of post-traumatic stress disorder screening in the pediatric emergency department	2013
Zhiyuan Ou	Baksh, Shairaz	Targeted inhibition of breast cancer metastasis	2013
Todd Radostits	Mitchell, Lesley	Identifying genetic markers for risk of thrombosis in pediatric cancer patients: multicentre Canadian study	2013
Fahim Rahman	West, Lori	Inducing tolerance to T-independent antigens in neonatal mice using nanoparticles	2013
Ian Rodger	Wine, Eytan	Microbes in pediatric inflammatory bowel diseases (IBD): a key to unraveling disease pathogenesis	2013
Conrad I. Tsang	Newton, Amanda (Mandi)	Suicide-related behaviours in children and youth: tracking emergency department visits in Alberta	2013
Megan Ure	Alexander, Todd	Deciphering the role of claudin-14 in the pathophysiology of kidney stone formation	2013
Christen Klinger	Joel Dacks	Comparative Genomic Analysis of Multimeric Tethering Complexes in the Apicomplexan Parasites	2012
Dana MacIntyre	Linda Casey	Growth patterns, body composition and growth factors in pre-term infants after hospital discharge: A pilot study	2012
Daniel Zimmerman	Eytan Wine	Intestinal epithelial cell extrusion in pediatric inflammatory bowel disease (IBD)	2012
Danielle Arseneau	Shannon Scott	Research Nurses' experiences of using iPads for data collection in a Pan-Canadian study	2012
Diya Shi	Sandra Wiebe	Neural correlates of self-regulation: The transition from early to middle childhood	2012
Grayson Beecher	Francois Bolduc	Pharmacotherapy of impaired social interaction in Autism Spectrum Disorder	2012

Student	Supervisor / Mentor	Project Title / Description of Support	Date
Hai Chuan Yu	YangXin Fu	Down-regulation of GUCY1B3 by carboplatin and its implication in chemoresistance of ovarian cancer cells	2012
Jennifer Stanfel	Denise Hemmings	Novel mechanisms of estrogen-induced vascular adaptation during pregnancy	2012
Jeremy Fife	Hasan Uludag	Designing Biomaterials to Delivery siRNA in Leukemia Treatment	2012
Lesley Thomas	Gary Lopaschuk	Maturation of fatty acid oxidation in the newborn heart	2012
Matthew Benson	Ordan Lehmann	Defining the molecular basis of pediatric glaucoma	2012
Michelle Casey	David Eisenstat	Role of DXL genes in forebrain development and relevance to autism spectrum disorders	2012
Michelle Chornell	Sandra Davidge	Mechanisms of long-term vascular effects in an animal model of preeclampsia	2012
Moses Fung	Bernard Thebaud	Isolation and characterization of lung endothelial progenitor cells in health and disease	2012
Nathan Chu	Greg Funk	Metabotropic glutamate receptors in the excitation of inspiratory networks by astrocytes	2012
Nicole Dahl	Gwen Rempel	Relationship of child adaptive skills to family management and parenting stress in families of children with complex CHD	2012
Ori Scott	Jerry Yager	Safety of broccoli sprouts in humans - a phase 1 clinical trial	2012
Orysa Svystun	Shairaz Baksh	Post-translational modification of the pro-apoptotic protein MOAP-1 in pediatric leukemias	2012
Sarah Aziz	Jason Dyck	Pre-clinical testing of prenatal resveratrol administration in rats to prevent fetal programming of hypertension	2012
Todd Radostits	Lesley Mitchell	Identifying genetic markers for predicting children at risk for venous thrombosis in the pediatric oncology population	2012
Viane Faily	Catherine Field	Estimated Choline intake in a cohort of pregnant women in Alberta	2012
Ying Ling	Simon Urschel	Human regulatory B cells: phenotypes and maturation of interleukin 10 producing B cells in children	2012
Danielle Arseneau	Shannon Scott	Preparing Multidisciplinary Teams for Clinical Practice Change: A Qualitative Project	2011
Erin Boschee	Lindsay Ryerson	Risk Factors, Indicators and Mortality in Children Receiving Renal Replacement Therapy in Pediatric Intensive Care	2011
Laura A Vogels	Lori West	B Cell Tolerance in a Mouse Model of ABO-incompatible Infant Heart Transplantation	2011
Moses Fung	Bernard Thebaud	Isolation and Characterization of Lung Endothelial Progenitor Cells in Health and Disease	2011
Nanki Longowal	YangXin Fu	Role of GUCY1B3 in Epithelial Ovarian Cancer	2011
Ori Scott	Jerome Yager	Willingness of Expectant Mothers to Consume Broccoli Sprouts: Preventing Fetal Brain Injury	2011
Shaomeng Wang	Denise Hemmings	Mechanisms of Cytomegalovirus-induced Endothelial Permeability	2011
Ying Ling	Simon Urschel	Regulatory Capacity of CD5+CD1d+B Cells (B-10 Cells) in Healthy Children and Following Heart Transplantation	2011
Alyssa Lau	Todd Alexander	Evaluation of Candidate Genes in the Causation of Hypercalciuria, Nephrolithiasis and Osteopenia	2010
Ashraf Kharrat	Samina Ali	Caregiver Satisfaction with Pediatric Pain Management in the Emergency Department	2010

Student	Supervisor / Mentor	Project Title / Description of Support	Date
Caitlyn Schleppe	Denise Hemmings	Regulation of Placental Artery Vasodilation by Sphingosine 1-phosphate, a Bioactive Lipid	2010
Carmen Chan	Sandra Davidge	Role of Neuronal Nitric Oxide Synthase in Endothelial Inflammation	2010
Helen Chung	Ordan Lehmann	Characterization of a Novel Bone Morphogenetic Protein Antagonist in Ocular Disease	2010
Leigh Beamish	Eytan Wine	Osteopontin Involvement in the Formation of Attaching/Effacing Lesions	2010
Peter Iglinski	Catherine Field	Establishing the Essentiality of Dietary Choline during Lactation	2010
Prabhjot Mahal	Lesley Mitchell	Relationship of Prothrombotic Markers to Thrombosis in Survivors of Childhood Cancer	2010
Ryan Alexander	Francois Bolduc	From Flies to Human and Back: the Role of Forkhead on Cognitive Development	2010
Solomia Tsisar	Gary Lopaschuk	Role of the Expression of HIF1-a in mediating the Decrease in Myocardial Glycolysis during the Neonatal Period	2010
Tami Wong	Shannon Scott	Developing and Testing Knowledge Translation Narratives for Parents with a Child with Asthma: Phase I	2010
Kevin Zuo	Andrew Mackie	Determining the Effectiveness of Prenatal Screening for Congenital Heart Disease in the Province of Alberta	2010
Aamir Bharmal	Ioana Bratu	Predictors of gastrocutaneous fistula in the pediatric patient	2009
Adam Hall	Bernard Thebaud	Enhancing the healing capacity of surfactant with stem cells	2009
Andrea Berendt	Sarah Forgie	Recovery of viruses from stethoscopes by culture and nucleic acid amplification, and efficacy of ultraviolet disinfection	2009
Andrea Yu	Amanda Newton	Examining trends in clinical severity in pediatric mental health presentations to the emergency department	2009
Anna Matejki	Carmen Rasmussen	Diffusion tensor magnetic resonance imaging in children with tourette syndrome	2009
Brandon Tanner	Gary Lopaschuk	Changes in energy metabolism in the hypertrophic newborn heart	2009
Casey Berglund	Rhonda Bell	Methods to record infant feeding behaviours and contributions to maternal weight loss	2009
Catriona Richmond	Gwen Rempel	Application of the family management style framework to families of pre-school children who have hypoplastic left heart syndrome	2009
Christopher Cheung	Sandra Davidge	The effect of hyperglycemia on the estrogen regulation of vascular nitric oxide synthases	2009
Jillian Popel	Wael El-Matary	Removal of esophageal foreign bodies in children: Rigid versus flexible esophagoscopy	2009
Lauren Eastman	Denise Hemmings	The placenta as a viral reservoir for human cytomegalovirus	2009
Lauren Ryan	Lori West	Functional in vitro capacity and potential regulatory mechanisms of B-cells in ABO-incompatible infant heart transplant	2009
Lilliam Lim	Linda Chui	Detection of shiga toxin-producing e.coli in patients experiencing diarrhea in both hospital and community settings	2009
Serge Goekjian	Gina Rayat	Rejection of newborn pig islets by human type 1 diabetic immune cells	2009
Simon Bow	Terry Klassen	Developing a register of child-relevant systematic reviews: an evidence base for decision-making	2009

Appendix H – Patient – Community Engagement Training Program Students

Student	Supervisor / Mentor	Project Title / Description of Support	Date
Megan Lukasewich	Jardine, Cindy	The impact of participatory approaches to research on Aboriginal youths	2014
Maira Quintanilha	Bell, Rhonda	Enrich: promoting appropriate maternal body weight in pregnancy and postpartum through healthy eating	2014
Priatharsini Sivananthajothy	Springett, Jane	Understanding perceptions of community engagement held by stakeholders within the family care clinic planning process	2014
Batal, Kareema	Raine, Kim D/ Reed, Shandy	Protecting children from the harmful effects of marketing unhealthy food and beverages: Engaging parents in charge	2013
Halayko, Janine	Magill-Evans, Joyce	Teaching two-wheeled cycling to children with a mild cognitive disability	2013
Kowal, Stephanie	Jardine, Cindy G/ Bubela, Tania	Risk communication and vaccination uptake by recent immigrant mothers of Edmonton	2013
Lefebvre, Megan	Mayan, Maria	Adherence amongst chaos: a community-based research study to explore HIV-positive women's adherence to HIV medication	2013
Robinson, Tristan	Gokiart, Rebecca	Outcomes-based service assessment for at-risk Aboriginal families	2013
Saby, Colin	Chapman, Sherry-Ann	The AACL inclusive recreation community-based research project	2013
Angela Coppola	Tara-Leigh McHugh	Creating a Critical Hours Sports-Based Program with Aboriginal Adolescents: Establishing Cultural Relevance	2012
Melissa Daniels	Geoff Ball	Using Community-based research principles to develop a knowledge translation plan for a pediatric obesity project	2012
Nicole Nosworthy	Rebecca Gokiart	Early childhood development in a multicultural context	2012
Rouzbeh Ghahreman	Ernest Khalema	Audism: The Hidden Problem	2012
Tracy Durksen	Laura Templeton	Exploring social determinants of health in Edmonton's low-income urban Aboriginal community	2012
Ekaterina Chudnovskaya	Rebecca Gokiart	Community - based Evaluation of a 'Caring Community Collaborations' Pilot Project	2011
Julie Hudson	Laurie Schnierer	Early Childhood Development in Low Income Families: Community - driven Inquiries	2011
Mahsa Jessri	Anna Farmer	Barriers to Compliance with Infant Feeding Recommendations among Diverse Etho-cultural Groups in Edmonton	2011
Eun Jung Shim	Maryam Sharifzadeh-Amin	Oral Health of Young Aboriginal Children in Urban Communities	2010
Holly Stack Cutler	Rauno Parrila	Exploring System Barriers and Enablers in Recruiting Low-income Populations	2010
Kyley Alderson	Fay Fletcher	Examination of a Parent Education Program Designed to Support Child Language Development	2010
Marguerite Tiangco	Maryam Sharifzadeh-Amin	Dental Health of Young Aboriginal Children in Urban Communities	2010
Stephanie Patterson	Veronica Smith	Examination of a Parent Education Program Designed to Support Child Language Development	2010

Appendix I – Lunch & Learn Seminar Series

Title	Presented by	Date
How to Prepare an Abstract	Dory Sample, Cheri Robert	August 2014
SPSS Workshop	Sung Kang	Mar, Apr, May, 2014
CCHCSP Lunch & Learn	Dr. Johanna Darrah	May 2014
Graduate Studentship Workshop	Dr. Lorin Charlton	January 2014
Summer Studentship Workshop	Dr. Lorin Charlton	January 2014
Graduate Studentship Workshop	Michelle Bailleux	December 2013
Summer Studentship Workshop	Michelle Bailleux	December, 2013
How to Present Your Data	Drs Sarah Curtis & Chloe Joynt	October 2013
How to Prepare an Abstract	Michelle Bailleux	August, 2013
Pediatric & Women's Genetics	Dr. John Greer	June, 2013
Human Ethics and the Move to REMO	Kim Kordov	May 2013
SPSS Workshop	Hitesh Bhatt	Mar, Apr, May 2013
Systematic Reviews: Everything You Wanted to Know but Were Afraid to Ask	Dr. Lisa Hartling	March 2013
Developing Knowledge Translation Plans: Tools and Resources	Tatjana Alvaj	February 2013
Privacy and Data Security in Clinical Research	Dr. Lawrence Richer	January 2013
Putting your Research Findings to Work: An Introductory Workshop on Knowledge Translation	Dr. Shannon Scott	November 2012
Developing Resources for Pediatric & Women's Genetics	Dr. John Greer	June 2012

Appendix J – Scientific Knowledge and Exchange Program

Awardee	Project Title / Description of Support	Date
Po-Yin Cheung	Linking Physiology with Clinical Practice - New Insights into Neonatal Transition	2014
Hamdy El-Hakim	Thyroid Cancer Care Collaborative: A Cloud-Based Solution to Improving the Quality of Care in the Most Rapidly Growing Cancer in the US	2014
Edmond Lou	Visiting lecturer to bi-annual Edmonton Scoliosis Research Day	2014
Joanna MacLean	Application of 3D photography	2014
David Olson	Preterm Birth - Industry Meeting: commercialization is necessary for translation	2014
Craig Steinback	The role of sex hormones in sympathetic neurovascular regulation	2014
Jerome Yager	Pediatric Research Day and Pediatric Grand Rounds	2014
David Olson	The Inaugural Canadian National Perinatal Research Meeting	2013
Rhonda Rosychuk	Statistical Society of Canada annual scientific meeting	2012
Doug Hill	Brian Greenhill Lecturer in Orthopaedic Surgery Day	2012
Eytan Wine	Autography in health and disease: eating our way to a healthy future - Pediatric Grand Rounds	2012
Carol Boliek	The use of three-dimensional optical motion capture to measure non-speech and speech movements in children with speech disorders	2012
David Olson	LOI - Genome Canada research program (GAPPS/Gates graphics work)	2012
Denise Hemmings	No Name Conference	2012
Gary Lopaschuk	33rd International Society for Heart Research North American Section Meeting	2012
Ian Adatia	Hypoplastic left heart Symposium hosted by the Edmonton Congenital Cardiac Program at the 6th World Congress of Pediatric Cardiology	2012
Jeffrey Bisanz	Biennial Meeting of the International Society for the Study of Behavioural Development	2012
Jerry Yager	CP in Motion: A Conference and Workshop Focusing on Recent Advances in Applied Therapies for Children with Cerebral Palsy	2012
Lisa Hornberger	Fetal Perinatal and Neonatal Cardiology: State of the Art and New Frontiers International Symposium	2012
Rhonda Bell	Iron Status and Bone Metabolism: Impacts on Maternal and Child Health	2012
Samina Ali	Towards Optimizing the Treatment of Children's Pain in the Emergency Department	2011

Appendix K – Trainee Travel Grants

Trainee	Supervisor / Mentor	Project Title / Description of Support	Date
Mohammed Habdan	Nee Khoo	American Society of Echocardiography, 20-24 Jun-14, Portland, OR	2014
Ensaf Almomani	Emmanuelle Cordat	Membrane Proteins in Health and Disease - Canadian Society for Molecular Biosciences, 9-13 Apr-14, Banff, AB	2014
Prashant Bobhate	Ian Adatia	7th International Symposium on Neonatal and Childhood Pulmonary Vascular Disease, 26-30 Mar-14, San Francisco, CA	2014
Michael Bording-Jorgensen	Eytan Wine	Banff Conference in Infectious Disease, 4-8 Jun-14, Banff, AB	2014
Alison Care	Sandra Davidge	Society for Gynecologic Investigation, 24-30 Mar-14, Florence, Italy	2014
Maria Castro Codesal	Alvaro Osornio Vargas	American Thoracic Society, 17-21 May-14, San Diego, CA	2014
Anthony Chiu	Joseph Casey	Association for Research in Vision and Ophthalmology Annual Meeting, 4-8 May-14, Orlando, FL	2014
Gonzalo Garcia Guerra	Sunita Vohra	7th World Congress on Pediatric Intensive and Critical Care, 5-13 May-14, Istanbul, Turkey	2014
Long Guo	Ian Adatia	7th International Conference Neonatal and Childhood Pulmonary Vascular Disease, 26-30 Mar-14, San Francisco	2014
Shreepal Jain	James Coe	PICS - AICS 2014, 6-10 Jun-14, Chicago, IL	2014
Harmanpreet Kaur	Tarek El-Bialy	American Association for Dental Research, 19-22 Mar-14, Charlotte, NC	2014
Atsushi Kawaguchi	Yutaka Yasui	7th World Congress on Pediatric Intensive and Critical Care, 3-8 May-14, Istanbul, Turkey	2014
Amin Komeili	Samer Adeeb	21st IMAST, 15-20 Jul-14, Valencia, Spain	2014
Praveen Kumar	Lisa Hornberger	Pediatric Academic Society 2014, 3-6 May-14, Vancouver, BC	2014
Nicholas Kuzik	Valerie Carson	2014 Global Summit on Physical Activity of Children, 19-22 May-14, Toronto, ON	2014
Amanda Lau	Piush Mandhane	2014 American Thoracic Society International Conference, 15-14 May-14, San Diego, CA	2014
Kelycia Leimert	David Olson	Society for Gynecologic Investigation Annual Meeting 2014, 26-29 Mar-14, Florence, Italy	2014
David Lim	Justine Turner	Digestive Disease Week, 2-7 May-14, Chicago, IL	2014
Chloe Luck	Rachel Wevrick	Keynote symposium - Obesity: a multisystems perspective Vancouver, BC Jan 12-16, 2014	2014
Megan Lukasewich	Cindy Jardine	Canadian Public Health Association - Public Health 2014, 25-29 May-14, Toronto, ON	2014
Linda Mahgoub	Chloe Joynt	2014 PAS / SPR Meeting, 2-7 May-14, Vancouver, BC	2014
Megan O-Reilly	John Greer	International Neonatology Association Conference, 27-Mar to 06-Apr-14, Valencia, Spain	2014
Igor Pravdivyi	Rachel Wevrick	Keynote symposium - Obesity: a multisystems perspective Vancouver, BC Jan 12-16, 2014	2014
Hasnain Raza	Tarek El-Bialy	43rd Annual Meeting of American Association of Dental Research, 19-23 Mar-14, Charlotte, NC	2014
Elise Regehr	Jacqueline Pei	NeuroDevNet Brain Development Conference, 19-24 Jul-14, Montreal, QC	2014

Trainee	Supervisor / Mentor	Project Title / Description of Support	Date
Erica Roberts	Kate Storey	International Society for Behavioral Nutrition and Physical Activity, 20-25 May-14, San Diego, CA	2014
Tristan Robinson	Rebecca Gokiart	The Early Years Conference 2014, 30-Jan - 02-Feb-14, Vancouver, BC	2014
Lori-Ann Sacrey	Lonnie Zwaigenbaum	International Meeting for Autism Research, 14-17 May-14, Atlanta, GA	2014
Gauri Shah	Joan Robinson	AMMI 3-5 Apr-14, Victoria, BC	2014
Rianne Spaans	Jacqueline Pei	National Association for School Psychologists	2014
Lannae Strueby	John Greer	Pediatric Academic Societies Annual Meeting, 2-6 May-14, Vancouver, BC	2014
Geetha Venkateswaran	Sujata Persad	10th Conference on Signalling in Normal and Cancer Cells	2014
Quang Vo	Edmond Lou	10th Meeting of International Research Society of Spinal Deformities, 25-Jun to 3-Jul-14, Sapporo, Japan	2014
Deenaz Zaidi	Eytan Wine	DDW, 3-6 May-14, Chicago, IL	2014
Katrina Kully-Martins	Jacqueline Pei	International Conference on Fetal Alcohol Spectrum Disorder 27-Feb to 2-Mar, 2013 Vancouver, BC	2013
Stefanie Seitz	Simon Urschel	2013 Canadian Society of Transplantation Annual Scientific Conference March 13-16, 2013 Lake Louise, AB	2013
Bader Alsaikhan	Peter Metcalfe	Society of Pediatric Urology/American Urological Association Meeting 2-6 May, 2013 San Diego, CA	2013
Lesley Brennan	Sandra Davidge	Society for Gynecologic Investigation 19-23 March, 2013 Orlando, FL	2013
Tomohito Ishiguro	David Olson	Society for Gynecologic Investigation Annual Scientific Meeting 19-25 Mar, 2013 Orlando, FL	2013
Laura Marcela Reyes	Sandra Davidge	Society for Gynecology Investigation Annual Meeting 20-24 April, 2013 Orlando, FL	2013
Amber Savage	David McConnell	NNDR Conference in Disability Research 29-May to 1-June, 2013 Turku, Finland	2013
Laura Weingarten	Samina Ali	Canadian Association of Emergency Physicians 1-5 Jun, 2013 Vancouver, BC	2013
Jillian Avis	Geoff Ball	Canadian Obesity Summit 1-4 May, 2013 Vancouver, BC	2013
Satvinder Kaur Ghotra	Jerome Yager	Pediatric Academic Societies Annual Meeting 3-7 May, 2013 Washington, DC	2013
Eun-Young Lee	John Spence	Canadian Obesity Summit 1-4 May, 2013 Vancouver, BC	2013
Erin Lewis	Catherine Field	Experimental Biology 18-24 April, 2013 Boston, MA	2013
Katherine Pohlman	Sunita Vohra	International Congress of Complementary Medicine Research 9-14 April, 2013 London, UK	2013
Georg Schmolzer	Po-Yin Cheung	Pediatric Academic Society Annual Meeting 30-Apr to 07-May, 2013 Washington, DC	2013
Mordechai Slae	Hien Huynh	Digestive Disease Week 17-22 May, 2013 Orlando, FL	2013
Dongming Zhou	Christian Beaulieu	Conference of Human Brain Mapping Organization 16-20 June, 2013 Seattle, WA	2013
Rami Abou Zeinab	Roger Leng	American Association of Clinical Oncology 31-May to 4-Jun-13 Chicago, IL	2013
Fatheema Begum Subhan	Catherine Field	Experimental Biology 19-24 April, 2013 Boston, MA	2013

Trainee	Supervisor / Mentor	Project Title / Description of Support	Date
Shyambabu Chaurasiya	Mary Hitt	American Society for Gene and Cell Therapy Annual Meeting 14-18 May, 2013 Salt Lake City, UT	2013
Rebecca Georgis	Rebecca Gokiart	American Educational Research Association 28-Apr to 1-May, 2013 San Francisco, CA	2013
Marilyn Gordon	Shairaz Baksh	Hippo Tumor Suppressor Network - From Organ Size Control to Stem Cells and Cancer 15-24 May, 2013 Monterey, CA	2013
Lyndsey Hahn	David McConnell	Nordic Network on Disability Research Conference 27-May to 4-Jun-13 Turku, Finland	2013
Mariam Hanna	Chloe Joynt	Neonatal Advanced Nursing Forum 29-31 May, 2013 Washington, DC	2013
Jane Ng	David Olson	Annual Infinium HumanMethylation450 Array Workshop 13-20 Apr, 2013 London, UK	2013
Kim-Cuong Nguyen	Lawrence Le	European Symposium on Ultrasonic Characterization of Bone 5-11 May, 2013 Granada, Spain	2013
Jessica Nicoll	Po-Yin Cheung	Pediatric Academic Societies Annual Meeting 3-7 May, 2013 Washington, DC	2013
Megan O'Reilly	Bernard Thebaud	Pediatric Academic Societies 30-Apr to 7-May-13 Washington, DC	2013
Alan Richter	Eric Parent	Society on Scoliosis Orthopedic Rehabilitation Treatment 8-12 May, 2013 Chicago, IL	2013
Tho N.H.T. Tran	Lawrence Le	European Symposium on Ultrasonic Characterization of Bone 5-11 May, 2013 Granada, Spain	2013
Rhonda Zwingerman	Venu Jain	International Conference on Prenatal Diagnosis and Therapy 31-May to 7-June, 2013 Lisbon, Portugal	2013
Kacey Neely	Nicholas Holt	Biennial Childhood Obesity Conference 17-23 June, 2013 Long Beach, CA	2013
Katrina Kully-Martins	Jacqueline Pei	International Conference on Fetal Alcohol Spectrum Disorder 27-Feb to 2-Mar, 2013 Vancouver, BC	2013
Stefanie Seitz	Simon Urschel	2013 Canadian Society of Transplantation Annual Scientific Conference March 13-16, 2013 Lake Louise, AB	2013
Bader Alsaikhan	Peter Metcalfe	Society of Pediatric Urology/American Urological Association Meeting 2-6 May, 2013 San Diego, CA	2013
Samana Ali	Manoj Kumar	4th Congress of European Academic Paediatric Society (EAPS) 1-6 Oct, 2012 Istanbul, Turkey	2012
Sarah McKillop	Sunil Desai	SOIP 44th Congress of the Society of Pediatric Oncology London, UK October 5-8, 2012	2012
Antoinette Nguyen	Jerome Yager	Society for Neuroscience 2012 12-18 Oct-12 New Orleans, LA	2012
Akiko Hirose	Lisa Hornberger	23rd Annual Scientific Sessions of American Society of Echocardiography 29-Jun to 5-Jul, 2012 National Harbor	2012
Angela McBrien	Lisa Hornberger	23rd Annual Scientific Sessions of American Society of Echocardiography 29June to 3July, 2012 National Harbor	2012
Candace Necyk	Sunita Vohra	International Research Congress on Integrative Medicine and Health 15-19 May, 2012 Portland, OR	2012
Carrie Slatter	Dawn Hartfield	Pediatric Academic Societies Annual Conference 27-Apr-12 to 2-May-12 Boston, MA	2012
Christelle Lazareno-Saez	Joanne Lemieux	GTBIO 2012 Francophone Conference 3-6 Apr, 2012 Montpellier, France	2012
D. Eric Chalmers	Edmond Lou	Prosthetics & Orthotics Scientific Meeting 2012 Hong Kong Oct 4-11, 2012	2012

Trainee	Supervisor / Mentor	Project Title / Description of Support	Date
Dana Olstad	Kim Raine	International Conference on Diet and Activity Methods 12-18 May, 2012 Rome, Italy	2012
Emmi Driedger	Samina Ali	Canadian Association of Emergency Physicians Conference 1-6 June, 2012 Niagara Falls, ON	2012
Fatheema Begum	Rhonda Bell	Experimental Biology 2012 - 20-27 Apr-12 San Diego, CA	2012
Ganesh Venkatraman	David Brindley	Lipid Signaling Pathways in Cancer - FASEB Science Research Conference 22-27 July, 2012 Steamboat Springs, CO	2012
Jamil Jivraj	Lonnie Zwaigenbaum	International Meeting for Autism Research 16-19 May, 2012 Toronto, ON	2012
Jessica Foulds	Rose Girgis	Canadian Pediatric Society Annual Conference 5-10 June, 2012 London, ON	2012
Jocelyn Graham	Rhonda Bell	Experimental Biology 2012 20-26 Apr, 2012 San Diego, CA	2012
Juliana VanderPluym	Hanna Kolski	Child Neurology Society 41st Annual Meeting 31-Oct to 4-Nov-12 Huntington Beach, CA	2012
Kennedy Denys	Carmen Rasmussen	Research Society on Alcoholism/FASDSG Annual Conference 22-27 Jun, 2012 San Francisco, CA	2012
Laura Forbes	Rhonda Bell	International Congress for Diet and Activity Methods 8 13-17 May, 2012 Rome, Italy	2012
Mahsa Jessri	Anna Farmer	Canadian Nutrition Society Annual Meeting 2012 23-26-May 2012 Vancouver, BC	2012
Mostafa Shahin	Afsaneh Lavasanifar	2012 AAPS Annual Meeting and Exposition Chicago, IL 14-18 Oct-12	2012
Mostafa Shahin	Afsaneh Lavasanifar	CSPS 2012 Annual Symposium - Modern Therapeutics 2012 12-15 June, 2012 Toronto, ON	2012
Neelam Mabood	Mandi Newton	Canadian Academy of Child and Adolescent Psychiatry 32nd Annual Conference Sep 29-Oct 3, 2012 Montreal, PQ	2012
Raie Bekele	David Brindley	Lipid Signaling Pathways in Cancer - FASEB Science Research Conference 22-27 Jul-12 Steamboat Springs, CO	2012
Sandra Hodgetts	Lonnie Zwaigenbaum	Canadian Association of Occupational Therapists National Conference 6-10 Jun, 2012 Quebec City, PQ	2012
Sarah Treit	Christian Beaulieu	18th Annual Meeting of the Organization for Human Brain Mapping 10-14 June, 2012 Beijing, China	2012
Stephanie Kowal	Cindy Jardine	Advancing Excellence in Gender, Sex, and Health Research Conference 29-31 Oct-12 Montreal, PQ	2012
Valsan Verghese	Sarah Forgie	AMMI Canada - CACMID Annual Conference 1-7 May, 2012 Vancouver, BC	2012
Ahmed Abou-Setta	Donna Dryden	19th Cochrane Colloquium	2011
Daniel Kerage	Denise Hemmings	2012 SGI 59th Annual Scientific Meeting	2011
Francois Jacob	Jerome Yager	American Academy of Neurology	2011
Jaskiran Sidhu	Sujata Persad	American Association of Cancer Research Annual Meeting 2011	2011
Jean-Francois Turcotte	Hien Huynh	NAPRGHAN Annual Conference	2011
Jeanelle Sabourin	Nestor Demianczuk	American Congress of Obstetricians & Gynecologists Annual District Meeting	2011
Jennifer Zwicker	Greg Funk	Society of Neuroscience	2011
Ketan Kulkarni	Bev Wilson	SIOP 43rd International Society of Pediatric Oncology	2011

Trainee	Supervisor / Mentor	Project Title / Description of Support	Date
Luis Altamirano-Diaz	Lori West	ACC American College of Cardiology	2011
Meghan Riddell	Sandra Davidge	Keystone Symposium: Angiogenesis: Advances in Basic Science and Therapeutic Applications	2011
Paul Brooks	Lisa Hornberger	American Society of Echocardiography 22nd annual	2011
Rajesh Alphonse	Bernard Thebaud	American Thoracic Society (ATS)	2011
Rebecca Mercer	Rachel Wevrick	12th International Conference on Human Genetics	2011
Santokh Dhillon	Holger Buchholz	International Society for Heart & Lung Transplantation (ISHLT) Meeting	2011
Stephane Bourque	Sandra Davidge	Keystone Symposium on Molecular and Cellular Biology	2011
Susan Armijo-Olivo	Lisa Hartling	19th Cochrane Colloquium	2011
Timothy Colen	Nee Khoo	Int'l Conference on Neonatal and Childhood Pulmonary Vascular Disease	2011
Vadivel Arul	Bernard Thebaud	American Thoracic Society (ATS)	2011
Yuka Yamamoto	Lisa Hornberger	International Society of Ultrasound in Obstetrics and Gynecology	2011
Zheng Hua	Justine Turner	Environmental Biology 2011	2011
Biagina-Carla Farnesi	Geoff Ball	Ottawa - June 2010 - Canadian Obesity Network 2nd Student Meeting	2010
Charissa Pockett	Holger Buchholz	Canadian Society of Transplantation - Annual Scientific Meeting 2011	2010
Gregory Hansen	Geoff Ball	Conference	2010
Heidi Angeles	Manisha Witmans	Canadian Pediatric Society 87th Annual Conference	2010
I.Esme Dijke	Lori West	American Society of Transplantation Annual Scientific Exchange	2010
Jiang-Qin Liu	Po-Yin Cheung	Annual Meeting of Pediatric Academic Societies	2010
Michele Hamm	Terry Klassen	2010 Pediatric Academic Societies' Annual Meeting	2010
Mylvaganam Jeyakanthan	Lori West	International Society for Heart & Lung Transplantation Meeting	2010
Yuanyuan Xie	Hien Huynh	Sixth Annual International Pediatric Intestinal Failure and Rehabilitation Symposium	2010
Aisha Bruce	Patricia Massicotte	Development of a Pediatric Quality of Life Inventory for Children Requiring Long-term Anticoagulation	2009
Alena Tse	Joan Robinson	Poster presentation - Infections in Children on extracorporeal membrane oxygenation (ECMO)	2009
Arul Vadivel	Bernard Thebaud	Poster presentation - The axonal guidance cue Ephrin promotes alveolar development	2009
		2008 PAS Annual Meeting	2009
Christina VanderPluym	Joan Rolnsem	Pediatric Academic Societies Annual Conference	2009
Jacqueline Ha	Laszlo Bajzar	Poster Presentation - The Profibrinolytic effect of thrombin formation during fibrinolysis	2009
Jutta van den Boom	Lisa Hornberger	Oral and poster presentation. Influence of Preterm Delivery and Bronchopulmonary Dysplasia on normal maturational changes in myocardial function - immediate and short term differences measure by Doppler Echocardiography	2009

Trainee	Supervisor / Mentor	Project Title / Description of Support	Date
Lavinia Colton	Bernard Thebaud	CCCHR Trainee Symposium - trainee presentation	2009
Omar Abu-Sa'da	Jerome Yager	Poster - Effect of Caffeine on the developing rat brain	2009
Rajesh Alphonse	Bernard Thebaud	Akt activation protects lung alveoli from oxidant-induced injury	2009
Simon Urschel	Lori West	Oral Presentation - Is HLA Sensitization after Pediatric Thoracic Transplantation Age Dependent	2009
Thea Chibuk	Dawn Hartfield	Pediatric Complicated Pneumonia	2009
Alena Tse	Joan Robinson	Present Poster as Research Day winner	2008
Catherine Burton	Sarah Forgie	Poster presentation	2008
Catherine Burton	Sarah Forgie	Presenting Abstract - Development of a Pediatric Quality of Life Inventory for Children Requiring Long-term Anticoagulation	2008
Denise Adams	Sunita Vohra	CARE Trainee	2008
Erika Persson	Mia Lang	Pediatric Academic Societies Annual Conference	2008
		Research Day Winner presenting in Winnipeg competition	2008
Gloria Perez	Edythe Tham	Detection of subclinical myocardial dysfunction in patients undergoing anthracycline therapy	2008
Jiaqin Liu	Po-Yin Cheung	Pediatric Academic Societies Annual Conference	2008
Juliana Rey-Parra	Bernard Thebaud	American Pediatric Society for Pediatric Research	2008
Khalfan Alsenaidi	Helen Coe	Poster & Oral - Percutaneous pulmonary valve replacement	2008
Mark Belletrutti	Dawn Davies	Attitudes and opinions of pediatric physicians regarding decisions to withdraw or withhold medically provided hydration or nutrition	2008
Michael Bowman	Kent Stobart	Oral Presentation at SIOP International Conference	2008
Mohamed El-Kalla	Shairaz Baksh	Poster presentation - Molecular mechanisms of RASSF1a directed inflammation	2008
Scott Pharis	Andrew Mackie	Oral Presentation-The impact of new SBE prophylaxis guidelines on the practice of pediatric and adult congenital cardiologist.	2008
Ava Kalyca Chow	Richard Schulz	Poster presentation - Caveolin- 1 regulation of matrix metalloproteinase - 2 in the heart	2007
Gordon Mack	Mary Massicotte	Oral Presentation - Complementary Alternative Medicines and Warfarin: Development and Validation of a Child Focused Education Tool in Children with congenital Heart Disease	2007
Mark Belletrutti	Dawn Davies	Research Poster - Attitudes and opinions of pediatric physicians regarding decisions to withdraw or withhold medically provided hydration or nutrition	2007

Appendix L – Resident/Clinical Fellow Research

Student	Supervisor / Mentor	Project Title / Description of Support	Date
Chantelle Champagne	Dawna Gilchrist	The recent history of offering cardiac repairs to children with Down Syndrome	2014
Maria Castro Codesal	Joanna MacLean	Pediatric Long-Term Noninvasive Ventilation Support in Alberta: a 10-year Experience Exportable across Canada	2014
Etienne Fortin-Pellerin	Lisa Hornberger	Developmental evolution of left ventricular diastolic mechanics and its impact of response to tachycardia and altered loading conditions	2014
Pankaj Jain	Andrew Mackie	Antibiotic prophylaxis for Bacterial Endocarditis: A study of knowledge and implementation of American Heart Association Guidelines among dentists and dental hygienists	2014
Tara McGrath	Samina Ali	A Qualitative Study for the Language of Satisfaction in Children	2014
Jacqueline Ogilvie	Helly Goetz	Anti-NMDA-Receptor Antibodies: a possible cause for developmental regression in autism spectrum disorders?	2014
Mohammed Al Habdan	Nee Khoo	Strain rate as heart rate independent measurement for myocardial function: validation study in human subjects	2013
Andrea Chambers	Troy Turner	Pre-hospital and Emergency Room Management of Pediatric Anaphylaxis at a Canadian Pediatric Centre	2013
Jacqueline Clayton	Sunita Vohra	Systematic review of outcome measures in randomized controlled trials of pediatric concussion management	2013
Elsa Friedrich	Chloe Joynt	Self-evaluation of procedural skill competencies by neonatal perinatal medicine trainees in Canada	2013
Ernst Hoppenbrouwers	Simon Urschel	Functional echocardiography as a monitor of graft function in pediatric recipients post cardiac transplantation with and without angiographically diagnosed cardiac allograft vasculopathy	2013
Praveen Kumar	Lisa Hornberger	Impact of intrauterine exposure to chronic hypoxia on myocardial and arterial function from early postnatal developmental stages in the rat	2013
Joseph MacLellan	Samina Ali	Practice variation in the emergency department treatment of Gingivostomatitis	2013
Aaron Moodley	Dominic Allain	Pre-hospital dexamethasone administration in patients with Croup: a medical record review	2013
Fareeha Nasir	Joan Robinson	Awareness of and adherence to clinical practice guidelines among pediatric physicians in Canada	2013
Tamar Rubin	Sunita Vohra	Systematic review of outcome measures in randomised controlled trials of pediatric eosinophilic esophagitis (EoE) treatment	2013
Jessica Nicoll	Po-Yin Cheung	Exhaled carbon dioxide and its relationship to neonatal breathing patterns in preterm infants immediately after birth	2013
Dongngan Truong	Nee Khoo	3D fusion echocardiography in pediatric and young adult patients	2013
Ruth Vilayil	Jane Schulz	Defining 'technicity' of Edmonton: a retrospective study of method of hysterectomy at the Royal Alexandra Hospital/Lois Hole Hospital for Women, comparing 2001 and 2011	2013
Dawn Danielson	Fiona Bamforth	A survey of primary care providers level of comfort and understanding of newborn metabolic screening in Alberta	2012
Gary Galante	Andrew Mackie	Pericardial effusion following open heart surgery in children: Incidence, risk factors, and outcomes, and utility of routine post-operative surveillance with echocardiography	2012

Student	Supervisor / Mentor	Project Title / Description of Support	Date
Jean-Sebastien Pelletier	Po-Yin Cheung	Receptor analysis of low-dose vasopressin in a swine model of hypoxia-reoxygenation	2012
Joseph LaBossiere	Po-Yin Cheung	The cardioprotective effects of matrix metalloproteinase-2 inhibition in neonatal asphyxia	2012
Jung Lee	Samina Ali	High fidelity simulation in pediatric emergency medicine: A survey of facilitator comfort and practice	2012
Lannae Strueby	Bernard Thebaud	Paracrine effect of mesenchymal stem cells on ventilation induced lung injury	2012
Mordechai Slae	Hien Huynh	Role of environmental factors in children with Eosinophilic Esophagitis	2012
Sadia Nakhuda	Mia Lang	Family-centered care in general pediatric clinical teaching units	2012
Timothy Colen	Jeffrey Smallhorn	Sub-valve and valvar abnormalities are associated with post-operative valve failure in children with primum AVSD	2012
Allison Hobbs	Bryan Dicken	Applying fibroscan elastography to the prediction of hepatic fibrosis in pediatric patients with intestinal failure	2011
Angie Wing Sum Ip	Lonnie Zwaigenbaum	Factors influencing ASD screening by community pediatricians: A mixed methods study	2011
Chelsey Grimbly	Sarah Curtis	Parenteral antibiotic duration in the treatment of pediatric osteomyelitis: A systemic review	2011
Daina Thomas	Samina Ali	Pediatric Pain Management in the Emergency Department: The Triage Nurses' Perspective	2011
Eileen Estrabillo	Linda Casey	Predictors of typical versus atypical feeding behaviors in children	2011
Jean-Francois Turcotte	Justine Turner	Comparison of the treatment of iron deficiency anemia in inflammatory bowel disease in children using oral iron fumarate vs. oral heme iron.	2011
Julia Drager	Justine Turner	Application of 2006 WHO Growth Standards to Young Children Referred to Sub-specialty Clinics for Failure to Thrive	2011
Laura Forbes	Rhonda Bell	Promoting healthy weight gain in pregnancy through dietary behavior change interventions	2011
Laura Weingarten	Samina Ali	A Child's Perspective on Pain Management in the Emergency Department	2011
Mariam Hanna	Chloe Joynt	Internet Use for Obtaining Medical Information by Parents in a Neonatal Intensive Care Unit	2011
Samana Ali	Lisa Hartling	A descriptive study of randomized controlled trials examining nutritional interventions for the neonatal population	2011
Santokh Dhillon	Edythe Tham	Cardiac Magnetic resonance (CMR) evaluation in the surgical management planning of borderline ventricles	2011
Sneha Suresh	Joan Robinson	Oral valganciclovir for CMV treatment in pediatric solid organ transplant patients	2011
Aysel Auer	Justine Turner	The Role of Intralipid Monitoring in Pediatric Parenteral Nutrition Support	2010
Carrie Slatter	Dawn Hartfield	Characteristics and Treatment of Children Admitted to Hospital for Severe Iron Deficiency Anemia	2010
Devika Dixit	Sarah Forgie	Attitudes/Feelings about Personal Protective Equipment (PPE) and Hand Hygiene among Residents	2010
Emmi Driedger	Samina Ali	What are kids getting into these days? Trending substance use presenting to the Stollery Children's Hospital Emergency Department	2010
Jessica Wylie	Seth Marks	Health Care Costs for Children with New Onset Type 1 Diabetes in Edmonton & Northern Alberta	2010

Student	Supervisor / Mentor	Project Title / Description of Support	Date
John Neilson	Lawrence Richer	Orthostatic Intolerance as a Marker of Altered Cerebral Perfusion and Trigger for Migraine Progression - A Pilot Study	2010
Ketan Kulkarni	Mary Patricia Massicotte	Outcomes of Antithrombotic Therapy in Pediatric Liver Transplant	2010
Michael van Manen	Michael Narvey	The use and outcome of paralysis for management of gastroschisis with silo	2010
Natalie	Mia Lang	Educating Minor Hockey Coaches about Concussion	2010
Neelam Mabood	Mandi Newton	Caring for Adolescents Who Visit the Emergency Department for Alcohol Use: A Phenomenological Study of Health Care Providers' Attitudes and Beliefs	2010
Rebeka Stevenson	James Coe	Utility of serial N-terminal natriuretic peptide (NT-proBNP) levels in pediatric heart failure	2010
Yuka Yamamoto	Lisa Hornberger	Anatomical and Functional Predictors of Fetal Lung Hypoplasia	2010
Christina Vanderpluym	Manjula Gowrishankar	Can the measurement of Cystatin C be utilized to determine renal function in children with solid organ transplantation?	2009
Paul Enarson	Terry Klassen	Clinical Markers of Early Septic Shock in the Pediatric Emergency Department	2009
Fawaz Al-Rafae	Justine Turner	The Relationship between Antitissue Transglutaminase Antibody Level and Histological Findings in Children Referred for a Diagnosis of Celiac Disease	2008
Michael van Manen	Leonora Hendson	Eighteen-Month Neurodevelopmental Outcomes of Children Born with Gastroschisis from Northern and Central Alberta	2008
Steven Johnson	Geoff Ball	Measuring Waist Circumference in Children and Youth: Developing a Standard Protocol Based on Cardiometabolic Risk	2007

Appendix M – Recruitment, Retention and Other Awards

Investigator	Area of Research Interest	Start Date
Jennifer Conway	Sensitization across the age spectrum following mechanical circulatory support in heart failure and transplant	2014
Stephane Bourque	Several lines of research including maternal iron deficiency during pregnancy and its long-term cardiovascular and metabolic consequences in the offspring	2014
Sarah Lopaschuk Fund	Travel awards for Residents	2014
Piush Mandhane	Little Bit of Help (LBoH)	2014
Lori West	CNTRP - Translating strategies for immunomodulation and transplantation tolerance	2014
Christy-Lynne Cooke	Mechanisms of in-utero-programming of hypertension and cardiovascular disease in Intrauterine growth restriction (IUGR) models	2014
Michael Hawkes	Host-pathogen interactions in malaria and global febrile illness: animal models and translation to global health	2013
Paul Kantor	Remodeling and recovery in pediatric heart failure	2013
Lynne-Marie Postovit	RAHF Sawin-Baldwin Chair in Ovarian Cancer	2013
Simon Urschel	Mutation of the immune system and impact on transplantation	2013
Michael van Manen	Integrating ethics with the use of technology, understanding of families, and outcomes to determine best practices	2013
Lawrence Richer	Expertise in data management and health research informatics. National representative of WCHRI in the Maternal, Infant, Child & Youth Research Network (MICYRN)	2013
Lisa Hartling / Shannon Scott	Translating Emergency Knowledge for Kids (TREKK)	2012
Helen Steed	CCI Robotic Endometrial Trial	2012
Sandra Davidge	preeclampsia, fetal programming	2012
Dawn Kingston	Maternal Psychosocial Assessment to Care Trial (IMPACT): Intervening Early to Improve Maternal and Family Well-being	2012
Silvia Pagliardini	Breathing, control of breathing, physiology, rhythms	2012
Sue Ross	Cavarzan Chair - mature women's health, pelvic floor disorders, health care systems, clinical trials	2012
Suzanne Tough	Maternal History of Early Adversity	2012
David Eisenstat	Neuro-oncology, cancer development, stem cells	2011
Francois Jacob	Neurology, copper metabolism disorder	2011
YangXin Fu	Notch signaling, ovarian cancer, molecular mechanisms	2011
Christian Beaulieu	NeuroDevNet	2010
Jerome Yager	NeuroDevNet	2010
John Andersen	NeuroDevNet	2010
Sunita Vohra	Complementary/alternative therapies, clinical trials	2010
Lisa Hornberger	The Evolving Role of First Trimester Fetal Echocardiography	2009
David McConnell	Child welfare, cognitive impairment	2009
Emmanuelle Cordat	Kidney disease, membrane proteins	2009
Eytan Wine	Gut, host-microbial interactions	2009

Investigator	Area of Research Interest	Start Date
Joanna MacLean	Sleep, breathing and ventilatory control in infants and children with cleft lip and/or palate	2009
Lori West	ABO incompatibility, cardiac transplantation	2009
Tarek El-Bialy	Bone regeneration, therapy development	2009
Ian Colman	Childhood Trauma and Stress Response	2009
Rebecca Gokiart	Social-Emotional Developmental Competencies in a Multicultural Context	2009
Serdar Dursun	fMRI of impulse control related to substance addiction and risk-taking tendencies	2009
Andrea Haqq	Child/youth, obesity, Prader-Willi Syndrome	2008
Andrew Mackie	Health services utilization and transition, congenital heart disease, clinical trials	2008
Anita Kozyrskyj	Chair in Maternal – Child Health and the Environment - child development, environmental factors/influence	2008
Bernard Thebaud	Neonate, stem cell, lung repair	2008
Carmen Rasmussen	Child development, fetal alcohol spectrum disorder, neurobehavioral functioning	2008
Geoff Ball	Nutrition, pediatric weight management, parent/child/clinician interactions	2008
Ian Adatia	Critical care, pulmonary hypertension, cardiology	2008
Jane Schulz	Mature women's health, pelvic floor disorders, incontinence	2008
Jia Li	Mass spectrometry, cardiology, rhythms	2008
Lonnie Zwaigenbaum	Neurological development, autism spectrum disorder, network/cohort	2008
Piush Mandhane	Child development, environmental factors/influence, asthma	2008
Todd Alexander	Kidneys, calcium, molecular disorders, treatment	2008
Yangxin Fu	Ovarian cancer, tumorigenesis, Notch signaling	2008
Amanda Newton	Pilot study of a Computer-Based Brief Intervention for Adolescent Alcohol Misuse in the Emergency Department	2008
Mary Jetha	Child/ youth, lipid disorders, diabetes, obesity	2007
Amanda Newton	Child/youth, mental health, emergency services	2007
Catherine Morgan	Inflammatory mediators, kidney injury, cardiopulmonary bypass	2007
Denise Hemmings	Congenital cytomegalovirus infection, placenta	2007
Peter Metcalfe	Intra-vesical pressures, molecular pathway characterization, therapy development	2007
Rabin Persad	Gastroesophageal reflux, child	2007
Sarah Curtis	Child/youth, emergency health services	2007
Sujata Persad	Oncology, inflammation, molecular biology, intercellular signaling	2007

Appendix N – Bridge Grants

Investigator	Project Title / Description of Support	Date
Emmanuelle Cordat	Physiological mechanisms of distal renal tubular acidosis	2014
Sarah Hughes	A Genetic Model for Neurofibromatosis Type II	2014
Justine Turner	The role of parenteral polyunsaturated fatty acids in organ dysfunction of preterm neonates	2014
Todd Alexander	Sodium, claudin-14 and the (patho) physiology of (hyper) calciuria and kidney stone formation	2014
Rachel Wevrick	Genetic and functional analysis of a mouse model of pediatric obesity	2013
Jaynie Yang	Intensive Motor Training After Perinatal Stroke to Enhance Walking	2012
Kathy Hegadoren	The impact of violence experiences on the relationship between oxytocin levels and trust	2012
Lisa Hornberger	Fetal Cardiovascular Programming in Maternal Diabetes: Longitudinal Investigation from the Fetal Stage to Early Childhood	2012
Lori West	Exploiting the immunologic immaturity of infancy: pathways to transplant tolerance	2012
Po-Yin Cheung	The cardiovascular support in newborns with hypoxia-reoxygenation injury	2012
Andrea Haqq	Is Prader-Willi Syndrome (PWS) a Unique Model of Childhood Obesity? Evaluation of Automatic Nervous System Function, Body Fat Distribution and Metabolic Profile in Children with PWS	2011
Denise Hemmings	Regulation of Vascular Tone by Sphingosine 1-Phosphate in Pregnancy	2011
Lisa Hartling	Optimizing the Validity, Utility and Transfer of Evidence for Pediatric Health-care practitioners	2011

Appendix O – Research Informatics Tools

Program / Tool	Description
REDCap (Research Electronic Data Capture)	REDCap is a secure, web-based application designed exclusively to support data capture for research studies. REDCap has a straightforward user interface and strong export capabilities that allow it to be used by WCHRI's research teams with little or no end user support.
CheckBox	CheckBox software allows investigators to invite study subjects to participate in web-based surveys.
ePRO (Electronic Patient Reported Outcomes)	ePRO manages longitudinal data collection directly from study subjects. Interfacing directly to Checkbox Survey Server, it issues assessment invitations and reminders according to predefined study schedules while also tracking participant responses.
LabKey	LabKey is a web-based collaboration "portal" designed to support all kinds of scientific research. LabKey Server provides a robust infrastructure for web-based collaboration. Building blocks include "anywhere" database access, file sharing, easy-to-manage security groups, authentication, auditing, message boards and issue trackers.

Appendix P –Research Informatics Users

Investigator	Project Name
Aisha Bruce	The Changing Epidemiology of Hemoglobinopathy Patients in Alberta, Canada
Alberta Heart Institute	Alberta Heart Final Report
	Alberta Heart Database
Alicia Chan	Fabry
Amanda Paton	Assessment of HCP PMH Education Needs
Andrea Haqq	ANS Function in PWS
	Clinical Characteristics of PWS
Andrew Mackie	Chapter II
	Discharge Study
	CHD and HTx Transition Readiness Study (RA: KR)
	Lost to Follow-up
	Marfan Review (Trainee - Varsha Thakur)
	Novel Transition Interventions
	Pericardial Effusion Following Open Heart Surgery in the Pediatric Population
	Prenatal Detection of CHD (Trainee Jean Trines)
	Ready or Not
	Chapter Study
	Evaluation of an Online Peer Support Network for Parents of Children with a Heart or Liver Transplant
	Excess Time to ACHD Care Study
	The Healthy Heart Study
	The Perspectives on Transition Study
Andrew Dixon	Tympanometry in AOM
Anita Kozyrskyj	Maternal Distress and Childhood Asthma
	Maternal Distress and Childhood Asthma-Lottery
	SyMBIOTA
Anna Farmer	The assessment of food insecurity in dietetic practice
Ari Joffe	Alberta Sepsis Network: Pediatrics
	Baby Survey
	PREP
	Brain Death Neurologists Survey
	EEG in severe traumatic brain injury
Arya M. Sharma	5As Tool Study
Beate C. Sydora	Menopause and Inflammatory Bowel Disease
Bernard Thebaud (Joanna MacLean)	The New Breath Study
Bonnie Islam	NECC Survey
Bonnie Kaplan	Alberta Pregnancy Outcomes and Nutrition
Brandy Wicklow	Resveratrol for the treatment of fatty liver in adolescents
Brenda Clark	Neurologic and Developmental Outcomes after Severe Traumatic Brain Injury in Young Children
Brian Rowe	Interventions in Acute Asthma
	Migraine Practice Guidelines Survey
	UHF Grant survey
Bruce Ritchie	PSVT

Investigator	Project Name
Bryan Dicken	Heterotaxy Syndrome: Is a prophylactic ladd procedure necessary in asymptomatic patients?
C17	Data collection platform
	N2 Equipment Maintenance and Calibration
	Stakeholder Feedback Survey
Centre of Genomics and Policy	Direct-to-Consumer Genetic Testing
CHEO	CHEO REDCap Support
CPGDS Consortium	CPGDS Web Site
David Nicholas	Transitioning Institutionalized Adults with Mental Illness to the Community (Davies-Musselwhite/Rogan)
	Vocational Resources Alberta
	Vocational Resources Canada
Dawn Davies	Pediatric Hanging Injuries
	Pediatric Palliative Care
Dawn Kingston	Barriers & Facilitators
	Healthy Outcomes of Pregnancy and postpartum experiences
Denise Avar	DTC Survey
Denise Thomson	Safety Attitudes: Frontline Perspectives
Department of Pediatrics	Anonymous Staff Survey
	DoP Division of Research Member Survey
	EPSC Survey 2010
	Grand Rounds
	Support Staff/Financial In-Service Training Survey
Diana Mager	BCAA in Pediatric Cholestatic Liver Disease
Edythe Tham	Single Ventricle echocardiographic evaluation
El-Matary	IBD Transition
Elaine Gilfoyle	Gastroschisis Outcomes
Elizabeth Pedersen	Ankle Stiffness Study
Epicore	Epicore REDCap Project
Eric Bedard	HRQOL after VATS lung resection for Ca.
Eric Parent	BPET (Tr Flavio Bonnet)
	Lokomat Evaluation (Richter/Hill)
	Low Back Pain
	the SETS study (Tr. Elise and Sanja)
Faculty of Medicine & Dentistry	Provision of REDCap to Faculty
Francois Bolduc	Fly gene array matching
Geoff Ball	Day Patient Intervention
	PCWH - Baseline
	Should I Stay or Should I Go
	The PAC Study
	Working with parents to prevent childhood obesity
Jeff Pugh	Hydrocephalus Registry
Georg Schmolzer	The TOP Project
	Confirmation of Correct Tracheal Tube Placement in Newborns
Gerald Geisbrecht	APRON
Graham Thompson	Appy Practice Variation
	Fluid Resuscitation in Pediatric Severe Sepsis

Investigator	Project Name
Gwen Rempel	Dorfman Systematic Review
	Family Resilience Study
	Patient Navigator
	Safeguarding Survival (Louisa Fricker)
Hien Huynh	Child Smoking
	GO IBD Research Database
	Possible RCT
Ian Adatia	Acoustic analysis
	Chest Closure
	Coaptation after Glenn
	Determination of Pediatric Oxygen Consumption
	Oxygen Consumption Methods
	Single Vs Two CAVSD
	Vasoactive Mediators
	PVS in Ex-premature Infants
	Time-domain Analysis of Heart Sounds in Children
	Safety in cardiac catheterization
	The effects of hyperoxia on oxygen consumption
Jeff Pugh	Hydrocephalus Registry
Jerome Yager	Health related quality of life after pediatric stroke
	Alberta Perinatal Stroke Program
	Edmonton Pediatric Stroke Program
	VIPS and IPSS
Johanna Darrah	AIMS
Jonathan Duff	Hemodynamic Collapse Post-Norwood
Jonathan Gaudet	Sepsis in Canadian Emergency Departments
Joanna MacLean	Enuresis and Sleep Disordered Breathing
	Non-Invasive Ventilation Home Program
	Northern Alberta Sleep Laboratory Database
Judith Hugh	New diagnostic biomarker strategies for estrogen receptor positive breast cancer patients.
Dr. Jennifer Conway	Long Term Outcomes of Pediatric Ventricular Assist Devices
Justin Ezekowitz	Sodium HF
Justine Turner	Attitudes to the use of Human Breast Milk in NICU
	Celiac Patient Satisfaction Survey
Kathleen Hegadoren	Trauma in Pregnancy (TIPS)
Khalid Aziz	The Golden Hour
Karen Forbes	Developmental Study of Clinical Reasoning
Karin Olson	Adolescents with Cancer and Depression
Lawrence Richer	Efficacy of combination therapy with intravenous ketorolac and metoclopramide for pediatric migraine therapy in the Emergency Department
	Ketorolac
	Acute Migraine Systematic Review
	Chronic Migraine Clinical Care Gap
	IIH Registry
	IV Fluid Study
	Pediatric Headache Research Registry
	PROMIC Study
Leah Gramlich	Safety and Performance of Ethanol Lock in Home Parenteral Nutrition Patients

Investigator	Project Name
Leo Dieleman	BROAD Capsule Study Use of an Orally Administered Antibody to Gluten to Prevent the Recurrence of Symptoms and Laboratory Parameters in Persons with Celiac Disease
Lesley Wiart	AICCP Evaluation of a Parent to Parent Support Program
Lindsay Ryerson	Prophylactic Peritoneal Dialysis
Lisa Hartling	Barriers and Facilitators (Tr. Michele Hamm) Communication Tools For Croup SKYFALL Data
Lisa Hornberger	Cardiac Function (TDE)
Lonnie Zwaigenbaum	Connecting the Dots (PD Sandra Hodgetts)
Lori West	Online Support Network for Parents of Children with a Heart of Liver Transplant
Maala Bhatt	Safety Surveillance Development Safety Surveillance Support
Manjula Gowrishankar	Cystatin C AKI Cystatin-C Cystatin C Clinical Testing in Solid Organ Transplant
Manoj Kumar	Epidural analgesia in labour iNO for preterm infants with severe hypoxemic respiratory failure
Mark Belletrutti	Quality of Care in Alberta Pediatric Sickle Cell Patients
Melanie Couture	Melanie Couture
Maria Castro	ASD Screening
Michael Mengel	Transplant Kidney Biopsy Database
Michael van Manen	Variability in postoperative management of esophageal atresia and tracheoesophageal fistula Family experience of the NICU Death in the NICU
MICYRN	Cerebral Palsy Registry - Evaluation Knowledge Translation database MICYRN General
Ming Chan	Acetyl-L-carnitine to enhance nerve regeneration in carpal tunnel syndrome Neuromuscular Disease Health Outcomes
NeuroDevNet	Cerebral Palsy Registry NeuroDevNet System Support
Paediatric Chairs of Canada	PCC Workforce Survey
Peter Metcalfe	OSA + NE Indications for UPJ repair in Children Urodynamic progression in the spina bifida population
Piush Mandhane	Azithromycin CHILD Study Visit Organizer REDCap Data Propagation Tool REDCap to REDCap Data Tool Refer a Friend WCHRI Recruitment
Rachel Khadaroo	Elder Friendly Surgery NEC Study
Research Centre for Women's and Infants' Health	MICYRN Biobank Survey

Investigator	Project Name
Richard Tang-Wai	Cannabinoid Use in Pediatric Epilepsy
Robert Couch	STOPP
Samina Ali	High Fidelity Simulation in Pediatric Emergency Medicine
	Acute Pediatric Musculoskeletal Pain
	Patient Satisfaction with Pain Management
	Safety in Children With Traumatic Injury
	The Genomics Study
	Trending Substance Abuse
	Pediatric Pain Management in the emergency Department: The Triage Nurses' Perspective
Sandra Hodgetts	Occupational therapists' beliefs and perceptions of treatment effects with sensory-based interventions in children with ASD.
Sarah Curtis	PPP Study
	Practice Variation Pain Survey (PEM)
	VISION
Shannon MacDonald	Parents' Views and Experience with Immunization-data entry
Simon Urschel	CRIO Project 5 CMV/EBV Status
Stephanie Atkinson	Weight gain during pregnancy
Stephen Caron	SPARC satisfaction survey
Stephen Freedman	ED Probiotic Treatment of Pediatric Gastroenteritis
Sunita Vohra	ASRLS
	Melatonin in ADHD
	N of 1
	Patient Safety Attitude Survey
	PRISMA Harms Extension
	Rhodiola rosea
Tara McGrath	Language of Satisfaction
Tom Blydt-Hansen	Non-invasive Monitoring of Pediatric Kidney Allograft Injury to Improve Diagnosis and Patient Outcome.
The Alberta Centre for Child, Family & Community Research (Suzanne Tough)	Views & Preferences of Alberta Birth Cohort Parent Participants on the Secondary Use of Research Data
Thierry Lacaze	CHEO Support
	LPT
	PPROM
	TcB RCT
Trina Uwiera	Nocturnal Enuresis
Veronica Smith	Perceptions on early intervention for children with autism
	Participation in Family Role Play in Second Life
	Technology in Inclusive Classrooms: From Implementation to Impact
Winnie Sia	Effectiveness of Postpartum Nutrition and Lifestyle Counseling Interventions on Cardiovascular Risk Reduction in the RAH Postpartum Preeclampsia Clinic

Appendix Q – Research Coordination Users

Investigator	Project Name
Abraham Peliowski	Efficacy and Safety of Targeting Lower Arterial Oxygen Saturations to Reduce Oxygen Toxicity and Oxidative Stress in Very Preterm Infants
Alicia Chan	A Phase 3b Open-Label Study to Evaluate the Effect of Kuvan® on Neurocognitive Function, Maintenance of Blood Phenylalanine Concentrations, Safety, and Population Pharmacokinetics in Young Children with Phenylketonuria A Phase 3b double-blind, placebo-controlled, randomized study to evaluate the safety and therapeutic effects of saproterin dihydrochloride on neuropsychiatric symptoms in subjects with phenylketonuria
Andrea Haqq	MiTy Kids (metformin in women with type2 diabetes in pregnancy kids trial)
Bernard Thebaud	Identification and isolation of endothelial progenitor cells (EPCs) from placenta and umbilical cord blood of premature and term infants
Carina Majaesic	CARESS: Canadian RSV Evaluation Study of Synagis®
David Olson	Single Nucleotide Polymorphisms and Stress in the Etiology of Spontaneous Preterm Birth
Dawn Davies	Develop and Pilot a Parent-Delivered Massage Program in Pediatric Oncology
Dawn Hartfield	A Study of the Epidemiology of Adverse Events in Children Hospitalized in Canada: The Canadian Pediatric Adverse Events Study
Diana Mager	Effect of branched chain amino acid supplementation on neurodevelopmental outcomes in infants with cholestatic liver disease awaiting liver transplantation
Edmond Ryan	Metformin in women with type 2 diabetes in pregnancy trial
Elizabeth Rosolowsky	Genesis (The Genetics and Neuroendocrinology of Short Stature; International Study) GeNeSIS - The genetics and neuroendocrinology of short stature international study
Eytan Wine	Azithromycin Based Therapy for Induction of Remission in Active Pediatric Crohn's Disease
Francois Bolduc	DNS (genes in ID)
Helly Goez	Charting the Territory: Determining and Documenting Trajectories for Families Where a Child Has a Life-Threatening Condition
Hien Huynh	CAPE - A long-term non-interventional registry to assess safety and effectiveness of Humira (adalimumab) in pediatric patients with moderately to severely active Crohn's Disease CIDsCaNN - Canadian children inflammatory bowel disease network: a joint partnership of CIHR and the CHILD foundation - inception cohort study SIMPONI - A phase 1b open-label stud to assess the safety and pharmacokinetics of subcutaneously administered golimumab, a human anti-TNFα antibody, in pediatric subjects with moderately to severely active ulcerative colitis Develop (2) - a multicenter, prospective, long-term, observational registry pediatric patients with inflammatory bowel disease Sucampo - a multicentre, randomised, placebo-controlled, double-blind study of efficacy, safety, and PK of lubiprostone in paediatric subjects aged >6 to <18 with functional constipation PUCFX (Serum infliximab levels and pharmacokinetics following first infliximab dose for induction of remission in children with ulcerative colitis) IDeaL (Infliximab Dose to Level study) A Randomized, Double-blind, Parallel-group Study to Assess the Safety and Efficacy of Asacol (1.2 to 4.8g/day) 400 mg Delayed-release Tablets Given Twice Daily for 26 weeks to Children and Adolescents for the Maintenance of Remission of Ulcerative Colitis

Investigator	Project Name
Hien Huynh	A phase 3, randomized, open-label, parallel-group, multicenter trial to evaluate the safety and efficacy of infliximab (REMICADE) in Pediatric subjects with moderately to severely active ulcerative colitis
	Nurture: A Phase 2, open-label, multicenter study to assess the safety and efficacy of certolizumab pegol in children and adolescents with active Crohn's disease (CD)
	Molecular and structural alterations of the oesophageal epithelia in pediatric eosinophilic oesophagitis (EE)
	A Multidisciplinary Human Study on the Genetic, Environmental and Microbial Interactions that Cause Inflammatory Bowel Disease
	Nuture Extension: An Open-label, Multi-center Study to Assess the Safety of Certolizumab Pegol in Children and Adolescents with Active Crohn's Disease who completed C87035
	A Multicenter International Study of the Long-term Safety of Infliximab (REMICADE®) in Ulcerative Colitis RESULTS UC: REMICADE Safety Under Long-term Study in Ulcerative Colitis
Ioana Bratu (previously Gordon Lees)	Canadian Pediatric Surgery Network (CAPSNet): establishing best perinatal practices for gastroschisis and congenital diaphragmatic hernia using a Canadian dataset
Janet Ellsworth	Biologically-based Outcome Predictors in Juvenile Idiopathic Arthritis (BBOP)
	Determinants of Risk and Outcome in Inflammatory Arthritis
	LEAP: CIHR Team in Linking Exercise, Physical Activity and Pathophysiology in Childhood Arthritis: A Canadian Collaborative Team
	ReachOut: New onset juvenile idiopathic arthritis A Canadian Multicentre Collaborative Outcomes Study
	Teens taking charge: an internet-based self-management program for adolescents with arthritis: a randomized controlled trial
Jason Yap	Everolimus (a 24 month multicenter, single arm, prospective study to evaluate renal function, efficacy, safety and tolerability of everolimus in combination with reduced exposure to cyclosporin or tacrolimus in pediatric liver transplant recipients)
Joanna MacLean	Indicators, results and outcomes of infant sleep studies: a 10 year review
	Improving Metabolic Outcomes with PAP for Obstructive Sleep apnea in children and Teens with Obesity: IMPACT Obesity
Johanna Darrah	Canadian Infants' Motor Abilities: A validation of the Alberta Infant Motor Scale Normative Data
Kahlid Aziz	Canadian NeoNatal Network Database
Karen Benzies	Effects of an Educational Intervention on Father's Interactions with Infants born between 34 and 36 weeks gestation
Kathy Hegadoren	TIPS (A Prospective Matched Cohort Regional Study of Maternal and Child Outcomes after Trauma during Pregnancy)
	Impact of Partner Violence on Women's Health
	Exploring the Relationship between Trust and Plasma levels of Oxytocin in Premenopausal Women: a Pilot Study
Lawrence Richer	A Worldwide, Randomized, Double-blind, Placebo-controlled, Parallel Group Clinical Trial to Evaluate the Safety and Efficacy of Rizatriptan for the Acute Treatment of Migraine in Children and Adolescents
Leo Dieleman	Capsule Endoscopy for the assessment of abnormal intestinal permeability in Crohn's Disease relatives
	Use of an Orally Administered Antibody to Gluten to Prevent the Recurrence of Symptoms and Laboratory Parameters in Persons with Celiac Disease (Gluten Sensitive Enteropathy)

Investigator	Project Name
Lesley Mitchell	The influence of age on the regulation of thrombin; Relevance to the development of Thromboembolic disease and its treatment
	Biomarkers for cardiovascular disease in childhood obesity
	Relationship of prothrombotic markers to thrombosis in survivors of childhood cancer
Manjula Gowrishankar	Serum Cystatin-C Determination of Renal Function in Pediatric Solid Organ Transplantation
	North American Pediatric Renal Transplant Cooperative Study
	Cystatin-C for Prediction of AKI in children who undergo cardiac surgery
Manoj Kumar	Epidural: Is epidural analgesia in labour associated with respiratory distress in term and near-term neonates?
	TcB (effect of phototherapy on the diagnostic accuracy of transcutaneous bilirubin (TcB) as compared to serum bilirubin in preterm infants
	Epidural 2: Is epidural analgesia in labour associated with respiratory distress in late preterm infants? – a retrospective cohort study
Mark Belletrutti	Multiple dose Study to Evaluate the Pharmacodynamics, Safety, and Tolerability of Apixaban in Pediatric Subjects with an Indwelling Central Venous Catheter
	Pilot Study for Standardization of Diagnostic Techniques for Central Venous Catheters - Venous Thromboembolism Study
Ming Chan	Acetyl-L-carnitine to enhance nerve regeneration in carpal tunnel syndrome
Nancy Dower	Open-label safety and tolerability study of dabigatran etexilate given for 3 days at the end of standard anticoagulant therapy in children aged 12 years to less than 18 years
	Open-label safety and tolerability of dabigatran etexilate mesilate given for 3 days at the end of standard anticoagulant therapy in successive groups of children aged 2 years to less than 12 years, and 1 year to less than 2 years
Paul Kantor	PCMR Genes (genotype-phenotype associations in pediatric cardiomyopathy)
	PCMR Biomarkers (cardiac biomarkers in pediatric cardiomyopathy)
	R&R (remodeling and recovery)
Piush Mandhane	The Canadian Healthy Infant Longitudinal Development (CHILD) study
	Asthma (a phase III, randomized, double blind, placebo-controlled study to assess the efficacy, safety, and tolerability of lebrikizumab in adolescent patients with uncontrolled asthma who are on inhaled corticosteroids and a second controller
Rabin Persad	Evaluation of the safe use and tolerance of 09532RF in a pediatric population
	Prevalence of gastroesophageal reflux symptoms in pediatric and adult patients with cystic fibrosis at Stollery Children's Hospital
Richard Fedorak	A randomized, double-blind, active comparator-controlled study to assess the efficacy and the safety of orally administered Pearlum [®] /EffectiCal [®] in postmenopausal women
Richard Tang-Wai	A Multicenter, Randomized, Controlled, Open-label Study to Evaluate the Cognitive Development Effects and Safety, and Pharmacokinetics of Adjunctive Rufinamide Treatment in Pediatric Subjects 1 to less than 4 years of age with Inadequately Controlled Lennox-Gastaut Syndrome
Robert Couch	Ancillary Study to the Canadian STOPP Research Program: The Genetic Susceptibility to Steroid Induced Osteoporosis in the Pediatric Population
	TrialNet: Oral Insulin for Prevention of Diabetes in Relatives at Risk for Type 1 Diabetes
	Steroid-Induced osteoporosis in the pediatric population – Canadian Incidence study (STOPP-CIS)
	Natural History Study of the Development of Type 1 Diabetes
	A multicenter, randomized, double-blind, placebo controlled efficacy and safety trial of intravenous zoledronic acid twice yearly compared to placebo in osteoporotic children treated with glucocorticoids for chronic inflammatory conditions
Rose Girgis	A Canadian, multi-centre, observational registry to study adherence and long term outcomes of therapy in pediatric subjects using SAIZEN via easypod auto-injector for growth hormone treatment

Investigator	Project Name
Rose Girgis	TRIGR : trial to reduce IDDM in the Genetically at risk
	Patro: post-marketing surveillance to monitor the long-term safety and efficacy of Omnitrope™ in infants, children and adolescents
Shairaz Baksh	The role of RASSF1A in Inflammatory Bowel Disease
Stu Carr	An Open-label safety and Efficacy Study of Reslizumab (CTx55700) for the Treatment of Pediatric Subjects with Eosinophilic Esophagitis who Completed Study Res 5 0002 “Canada Specific” Protocol
	Safety of Seasonal Influenza Vaccination in Egg-Allergic Patients
	An Efficacy and Safety Study of Reslizumab (CTx55700) in the Treatment of Eosinophilic Esophagitis in Subjects Aged 12 to 18 Years
Sunita Vohra	Rhodiola rosea for mental and physical fatigue in nurses on shift work
	Melatonin in ADHD (melatonin in youth: n-of-1 trials in a stimulant treated ADHD population)
	Faces, 2 & 3: Is integrating CAM therapies with conventional care cost-effective in reducing pain, nausea/vomiting, and/or anxiety in pediatric inpatients? (multi-stage project)
Susan Gilmour	Functional Outcomes of Pediatric Liver Transplantation (Quality of Life)
	Development and Validation of a Disease-Specific Health-Related Quality of Life Questionnaire for Children After Liver Transplantation
	Studies in Pediatric Liver Transplantation (Pediatric Liver Transplant Database)
Thierry Lacaze	Impact of hospital Readmission on breast feeding and maternal well being: part of a bigger grant " Clinical Outcomes and Health Care Utilization of Near term and Term Infants Born in Alberta
	Transcutaneous Bilirubinometers in the Community and the Reduction of Morbidity Associated with Jaundice: A clustered randomized controlled trial
	A prospective Regional Matched cohort Study of Child Outcome After Trauma During Pregnancy
	The impact on total duration of respiratory support of CPAP vs. mechanical ventilation in infants born 28 to 32 weeks gestation with Respiratory Distress Syndrome: A multi-centre randomized trial
	Effects of intentional delivery after preterm and prelabour rupture of membranes (PPROM) between 32 and 36 weeks of gestation
Verna Yiu	International Network and Registry for Thrombotic Microangiopathy (TMA): Storage of Samples in Biorepository for Future Research
Wendy Vaudry	Pharmacokinetics and safety of valganciclovir in pediatric heart transplant recipients < 4 months of age
	FluGene (risk factors for severe influenza in children)

Appendix R – Biostatistics Service Users

Investigator	Project Name
Academic Members	
Amanda Newton	Pediatric Mental Illness and Addiction
	Chart Review of Clinical Practice in the Emergency Department
	Indicators of Pediatric Emergency Mental Health Service Utilization
	A Multi-Centre Study (SCH, ACH) for Capacity in Children's Mental Health
	Brief Intervention in the Emergency Department for Enhancing Substance Use Care and Outcomes in Youth
	Pathways to Pediatric Mental Health Care: A Distance Support Program for Parents Following Pediatric Emergency
Amanda Newton and Andrea Yu (summer student)	Examining Trends in Clinical Severity in Pediatric Mental Health Presentation to the Emergency Department
Andrew Mackie	RCT of Transition Program for Youth with Heart Disease
	20140314 - Congenital Heart Adolescents Participating in Transition Evaluation Research: The CHAPTER III Study of Young Adolescents
	Ready or Not: Optimizing the Transition to Adult Care for Youth with Complex Cardiac Conditions
	Evaluation of Novel Transition Interventions for Youth with Congenital Heart Disease
Carla Angelski	A 4 Week Longitudinal Simulation Curriculum in the Pediatric Emergency Department
Carmen Rasmussen	Neurobehavioural Outcomes of Children with Fetal Alcohol Spectrum Disorder
Claire LeBlanc	Healthy Buddies WECA Community Project
Craig Steinback	Mechanisms of sympathetic hyperactivity in preeclampsia
Daina Thomas (Mentor: D. Davies)	Opioid Regulation, Parental Bereavement and Associated Risks
Dawn Davies	Outcomes of Pediatric Hanging Injuries Requiring CPR
	Prolonged Hospitalization of Infants and Children
Edythe Tham	Cardiac MRI in the Evaluation and Management of Children with Hypertrophic Cardiomyopathy
Edythe Tham (Gloria Perez)	Novel Imaging Techniques to Determine the Late Effects of Anthracycline Toxicity on Myocardial Function in Cancer Survivors
Geoff Ball	The HIP Study
	Exploring Differences in Dietary Assessment Techniques in Overweight Children and Adolescents
Geoff Ball, Donna Vine	Polycystic Ovary Syndrome (PCOS) in Overweight Adolescent Girls
Georg Schmolzer	Sustained inflation during neonatal resuscitation to reduce chronic lung disease
Gragasin Ferante (Sandy Davidge)	Propofol increases vascular relaxation in aging rats chronically treated with ACE inhibitor Captopril
Heather McDermid	The role of the gene Arhgap19 in neurological development.
Hien Huynh	IDEAL study
Ian Adatia	The Role of Vasoactive Mediators and Angiogenic Regulators in the Development of Pulmonary Arteriovenous Malformations
	20120427.1-Comparing the coaptation length in patients with hypoplastic left heart syndrome before and after tricuspid valve repair
	Instantaneous and Non-invasive Measurement of Pulmonary Artery Pressure Through Acoustic Analysis
	Randomized Controlled Trial to Investigate the Effect of Parental Presence at Intensive Care Unit to Ward Transfer Bedside Rounds on Children's Safety and Parental Anxiety

Investigator	Project Name
Jacob Jaremko	Is there SPACE for a streamlined MRI of the lumbar spine?
Jane Schulz	A Review of Midurethral Sling Procedures Done With and Without Prolapse Surgery
	A Retrospective Review of Patients Seen in a Multidisciplinary Pelvic Floor Clinic
	The Prevalence of Anal Incontinence Following Obstetrical and Sphincter Injury
	A Study of the Prevalence of Incontinence and Pelvic Floor Symptoms in Breast Cancer Patients
	The Prevalence of Bowel Symptoms in a Tertiary Care Urogynecology Population
Jane Schulz	Standards and Practice Patterns of Urogynecologic Surgeries
	Pelvic Floor Disorders and Sexual Dysfunction in Obese Women Undergoing Bariatric Surgery: Impact on Quality of Life
	Vaginal Pessary Erosions in Women with Pelvic Organ Prolapse: Prevalence, Risk Factors and Management
	Prevalence of Bacteriuria and Urinary Tract Infections in the Urogynecology Population in a Tertiary Care Centre
Jason Dyck	CD36 Expression Contributes to Age-induced Cardiomyopathy in Mice
Jaynie Yang	Intensive Motor Training After Perinatal Stroke to Enhance Walking
	Multi-centre Trial-Intensive Motor Training After Perinatal Stroke to Enhance Walking
Jia Li	Early Enhanced Energy and Protein Supply and Glucose Control with Insulin in Neonates after Cardiac Surgery
Joanna MacLean	Sleep, Breathing and Heart Health
Kyla Hildebrand, Tim Vander Leek	Outcomes: Oral Food Challenges in Outpatient Setting
Lawrence Richer	Ketorolac Pediatric migraine study (Randomization schedule)
Leonora Hendson	New Breath: Cardio-respiratory Function, School Age Abilities and Quality of Life in Extremely Low Birth Weight Infants
Lisa Hornberger	Anatomical and Functional Predictors of Fetal Lung Hypoplasia
	Fetal Cardiovascular Programming in Maternal Diabetes: Role of Fetal Hypoxia
Lola Baydala	Life Skills Training (LSTc) Substance Abuse Prevention
	Evaluating Success: Mother Earth's Children's Charter School
	Evaluation of Maskwacis Life Skills Training program
Lori West	ABO-Incompatible Cardiac Transplantation in Infants and Children
Margaret McNeely	Night-time Compression for Breast Cancer Related Lymphedema: A Randomized Controlled Efficacy Trial
Margie Davenport	Pulmonary Vein stenosis in Ex - premature infants
Manisha Witmans	Use of Telehealth for Delivery of Sleep Services
Michael van Manen	The Use and Outcome of Paralysis for Management of Gastroschisis with Silo
Nese Yuksel	BOTULINUM TOXIN A AND BUPIVICAINE TRIGGER POINT INJECTIONS AS TREATMENTS FOR CHRONIC PELVIC PAIN: A PROSPECTIVE PILOT STUDY ON PATIENT OUTCOMES
Nestor Demianczuk	Impact of Amniotic Fluid Volume on Outcome in Patients
Padma Kaul	2014-Pregnancy-Birth Cohort Study
Paul Grundy	Traumatic Lumbar Puncture in Acute Lymphoblastic Leukemia Patients
Rabin Persad	Bones & Crohn's: Bone Density in Children with Inflammatory Bowel
	GERD study
Rhonda Bell	Sugar Mommies: The Effects of Dietary Fructose on Pregnancy and Infant Outcomes
Richard Lehner	Triacylglycerol Metabolism
Samina Ali	Internet Use for Obtaining Medical Information by Parents in a NICU
	SNAP Study
	An Assessment of Patient and Caregiver Perceptions of Treatment
	Patient Satisfaction with Pain Management in the Pediatric Emergency Department.
	Pediatric Pain Management in the Emergency Department: The Triage Nurses' Perspective

Investigator	Project Name
Samina Ali	The Changing Face of Children's Pain Management: Using Genomics to Inform Safe & Effective Prescription
Sarah Curtis	Croup ED Presentations & Management
	Pediatric ED Pain Practices
Shairaz Baksh	The Role of Tumor Suppressor Protein, RASSF1A, in the Pathogenesis of Inflammatory Bowel Disease (IBD)
Shannon Scott	Translating Emergency Knowledge for Kids (TREKK): Needs Assessment
Sujata Persad	Molecular and Structural Alterations of the Esophageal Epithelia
	The Role of O-GlcNAc Post-translational Modification of B-catenin in Prostate Cancer Progression
Sunita Vohra	Detecting NHP-drug Interactions and NHP Adverse Events (SONAR)
	Systematic review of outcome measures in randomized controlled trials of pediatric Eosinophilic Esophagitis (EoE) treatment
	20120501.1-Attitudinal changes of Health Sciences students participating in a CAM-enriched interdisciplinary course and CAM fair
	Melatonin for initial insomnia in stimulant treated pediatric ADHD
	Adverse Events Associated with Spinal Manipulations
	Safety of Pediatric CAM - A Global Health Imperative
	Mindfulness Based Stress Reduction: A Non-pharmacological Approach to Support Children and Youth with Depression and Anxiety
	PIM Inpatient RCT
	Hospital Specialty SONAR (Study Of Natural health product Adverse Reactions)
	PAFS Validation Study
Tim Colen	Longitudinal Assessment of Tricuspid Valve Function in Hypoplastic Left Heart Syndrome: A Three-Dimensional Echocardiography Study
Thierry Lacaze (Amelie Du Pont-Thibodeau)	Transcutaneous Bilirubinometer Randomized Control Trial
Troy Turner	Prehospital Care of Emergency Department Patients with Anaphylaxis
Trainees	
Aaron Moodley	Prehospital administration of dexamethasone in patients with croup: A Medical Record Review
Ashley Fyfe - Brown	A pilot study examining breast tissue gene regulation using percutaneous estriol/estradiol with testosterone and micronized progesterone in the breasts of healthy woman in vivo
Beate Sydora	Systematic review on the use of the menopause specific quality of life (MENQOL) questionnaire
Beth DeBruyne	Hyponatremia in Hypoxic Ischemic Encephalopathy
Bodil Larsen	Calorie Estimation in Critically Ill Children
Caroline Xu	Microbiology of Pediatric Acute Mastoiditis in Alberta: A Comparison of Causative Organisms in Aboriginal and Non-Aboriginal Children
	20140305 - Predictors of Cytologic Adequacy of Surgeon - Performed Fine - Needle Aspiration of Thyroid Nodules
Christine Bentz	Improving "Cost Awareness" in Laparoscopic Hysterectomy: Pilot Study of Effect on OR Disposable Instrument Use and Patient Safety
Dawn Danielson	Assessing the Knowledge, Understanding and Comfort Level of Primary Care Providers as Relates to the Newborn Metabolic Screening in Alberta
Desiree Machado	Morbidity and Mortality of Infants Requiring Heart Transplantation in Western Canada: Waiting for an Answer
Elsa Fiedrich	Self - evaluation of procedural skill competencies by Canadian - trained Neonatal Perinatal Medicine trainees

Investigator	Project Name
Emmi Driedger	What Are Kids Getting Into These Days? Trending Substance Use Presenting to the Stollery Children's Emergency Department
	Fetal Cardiovascular Programming in Maternal Diabetes: Role of Fetal Hypoxia
Etienne Fortin-Pellerin	Evolution of diastolic function in a young infant piglet model
Gary Galante	Pericardial Effusion following Open Heart Surgery in Children: Incidence, Risk Factors, and Outcomes
Graeme Brassard, (Thomas Corbett)	The Effectiveness of the SOS Bakri Balloon in Controlling Post Partum Hemorrhage Unresponsive to Medical Therapy in a Community Hospital in Edmonton, Alberta
Gaurav Negar	Systematic review of the diagnostic accuracy of Transcutaneous devices measuring transcutaneous bilirubin in the preterm infants.
	Survival trends of Preterm infants born at < 28 week of gestational age at Royal Alexander Hospital
Harmanpreet Kaur	Long term effect of low intensity pulsed ultrasound on the mandible condyle in young growing rats during functional appliance treatment.
Joseph MacLellan	Experience and Attitudes of Pediatric Emergency Physicians toward Analgesic use in Patients with Infectious Throat or Mouth Pain
Jung Lee	High Fidelity Simulation in Pediatric Emergency Medicine: A Survey of Facilitator Comfort and Practice
Jutta Van Der Boom	Cardiac Function in Premature Infants Measured by Tissue Doppler Echocardiography
Katharine Kellock	A Tertiary Care Experience in the Diagnosis of Biliary Atresia and a Systematic Review of Risk Factors and Outcomes.
Katherine Peters	The Newborn Individualized Development Care and Assessment Program (NIDCAP) Improves Short and Long-Term Outcomes for Very Low Birth Weight Infants
Katherine Pohlman	Active vs. passive surveillance (M.Sc. Thesis Methodology)
Kiran Talwar	A Retrospective Review of Health Issues in Internationally Adopted Children Upon Assessment in Canada
Laura Reyes/Sandra T. Davidge	Cardiovascular effects of exercise in offspring born growth restricted
Kristine Ly	DEFINING "TECHNICITY" FOR EDMONTON: A RETROSPECTIVE STUDY OF METHOD OF HYSTERECTOMY AT RAH/LHHW COMPARING ALL HYSTERECTOMIES PERFORMED FOR NEOPLASTIC INDICATIONS FROM 2000-2001 AND 2010-2011
Levinus Dieleman	Use of an Orally Administered Antibody to Gluten to Prevent the Recurrence of Symptoms and Laboratory Parameters in Persons with Celiac Disease
Liliane Zorzela	Urinary Tract Infection at PICU. A New Target for Quality
Linda Mahgoub/Ian Adatia	Pulmonary Vein stenosis in Ex - premature infants
Mark Belletrutti	A Survey of Physician Attitudes Regarding Withdrawal of Nutrition
	Use of Telehealth for Delivery of Sleep Services
Matthew Benesch	Gene expression levels in breast cancer and their correlation to patient outcome
Nasir Fareeha	Awareness Of and Adherence to Clinical Practice Guidelines
Natalie Forbes	Educating Minor Hockey Coaches on Concussion
Pankaj Jain/Andrew Mackie	20130610.1 - Antibiotic Prophylaxis for Infective Endocarditis: A Study of Knowledge and Implementation of AHA Guidelines among Dentists and Dental Hygienists
Paul Enarson	Early Clinical Markers of Septic Shock in the Pediatric Emergency Department
Dr. Praveen Kumar/Dr. Lisa Hornburger	Impact of Intrauterine Exposure to Chronic Hypoxia on Myocardial and Arterial Function from early Postnatal Developmental stages in the rat
Rebeka Stevenson	Utility of Serial N-terminal pro Brain Natriuretic Peptide (NT-proBNP) Levels in Pediatric Heart Failure
Rick Mentz	Progesterone levels post embryo transfer predict the likelihood of successful pregnancy in IVF cycles


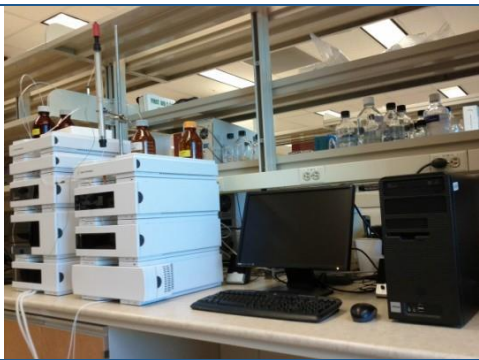
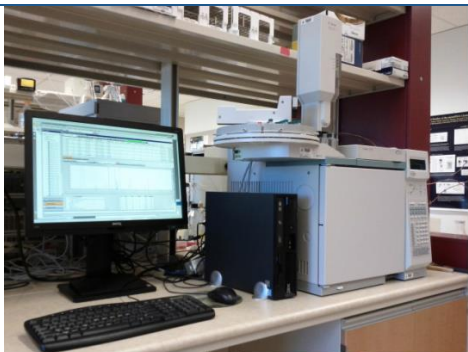
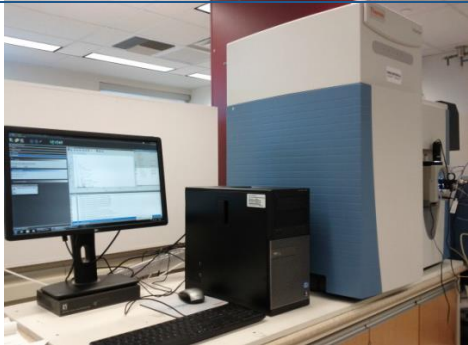
Investigator	Project Name
Ruth Vilayil	Technicity Rate for Edmonton: A Restrospective Chart Review of Method of Hysterectomy at the Royal Alexandra Hospital, comparing 2000-2001 and 2010-2011.
Samantha Smyth	The effect of delayed cord clamping (DCC) on neurodevelopment in infants born at < 29 weeks or < 1250g
Sanja Schreiber	Schroth exercises trial for scoliosis
Santokh Dhillon	To Compare the Echocardiographic Parameters with Cardiac MRI Parameters to Evaluate the Size of Each Cardiac Ventricle in Patients with Borderline Unbalanced Ventricles
Sarah Foster	The VICToRS (Virtual Inter-professional Case-learning Tools for Improving Real Service) Project, an inter-professional collaboration to optimise the design and examine the utility of Virtual Patient learning modules in post-graduate medical education.
Si Xi Zhao	Neonatal hyperglycemia and retinopathy of prematurity
Stacy Liu	Patient and treatment characteristics of children with behavioural problems in the emergency department
Wael El-Matary	Laparoscopic-assisted Percutaneous Endoscopic Gastrostomy vs a Traditional Percutaneous Endoscopic Gastrostomy in Children: A Randomized Controlled Trial
	Transition of Children with Inflammatory Bowel Disease to Adult Care
	Prevalence of Celiac Disease in Children with Inflammatory Bowel Disease (IBD)

Appendix S – Lois Hole Clinical Research Users

Investigator	Project Name
Bernard Thebaud	Identification and isolation of endothelial cells from placentas and umbilical cord blood of premature and term infants
Carmen Young	CHIPS - Control of Hypertension in Pregnancy
	Mag-CP-Magnesium sulphate for fetal neuroprotection of the preterm infant
	CPN- BILBO-birth under 29 weeks: improving outcomes for mothers & babies
	Maternal Morbidity
	Prevention of Severe Maternal Morbidity
David Olson	Comparison of the leukocyte activation markers on the infiltrating leukocytes in the choriondecidua, the fetal membranes, and the placental and peripheral blood during term and preterm human labor
	Leukocyte activation during term and pre term human labor
David W. Kinniburgh & Po-Yin Cheung	Biomonitoring of Environmental Contaminants in the Serum of Pregnant Women and Children living in Alberta
Dawn Kingston	HOPE-Mental Health and e-Screening in Pregnant & Postpartum Women
Denise Hemmings	Cytomegalovirus, inflammation and sphingosine 1- phosphate in preeclampsia
	Sphingosine 1-Phosphate: A double edged sword Regulating Vascular Tone in Pregnancy
Edmond Ryan	MiTY Study (Metformin in Women with Type 2 Diabetes in Pregnancy Trial)
Edythe Tham	Prenatally diagnosed Tetralogy of Fallot: fetal echocardiographic predictors of optimal outcome
Gina Higginbottom	Aboriginal and Immigrant Women's food choices and practice
	Optimizing food choices and practices in the perinatal period for immigrant women
Jane Schulz	PROcedure-specific MODular Training and Evaluation for surgical gynecology: The PROMOTE Trial
	A 14 week randomized parallel group placebo-controlled double-blind multicentre study of fesoterod overactive bladder patients with sub-optimal response to tolterodine 4mg er
	Prevalence of bacteriuria and urinary tract infections in the urogynecology population in a tertiary care centre
	Surgical Management of Stress Incontinence in Women: A Randomized Trial of TVT Secur vs TVT
	SYNERGY - A Randomized, Double-Blind, Parallel-Group, Placebo- and Active-Controlled, Multi-center Study to Evaluate the Efficacy, Safety and Tolerability of Combinations of Solifenacin Succinate and Mirabegron Compared to Solifenacin Succinate and Mirabegron Monotherapy in the Treatment of Overactive Bladder
Lisa Hornberger	Fetal Predictors of Clinical Presentation and Outcome in Tetralogy of Fallot with Absent Pulmonary Valve
	Digital three dimensional reconstruction of the early fetal heart
	Functional Neonatal Echocardiography Program Evaluation and Tool Validation
	Impact of Fetal Heart Disease on Fetal Cerebral and Placenta Blood Flow
	Impact of Perinatal Transition on Cardiovascular Function in the Health Neonate and in Critical Neonatal Heart Disease
	Influence of Preterm Delivery and Broncopulmonary Dysplasia on Normal Maturation Changes in Myocardial Function: Immediate and Short-term differences measured by tissue doppler Echocardiography

Investigator	Project Name
Lisa Hornberger	Utility of novel echocardiographic techniques for assessment of fetal cardiac function in congenital heart disease
	Prospective of SSA-Positive Maternal Surveillance Pregnancies (Heart Sounds at Home)
	Predictors of Neonatal Severity of Pulmonary Stenosis in Fetal CHD-retrospective study
Nan Schuurmans	Botulinum toxin A and bupivacaine trigger point injections as treatments for chronic pelvic pain: a prospective pilot study on patient outcomes
	Chronic Pelvic Pain Study Botulinum toxin A trigger point injections as a treatment for chronic pelvic pain: a prospective cohort study
Nestor Demianczuk	CHIPS - Child Study
	CHIPS - Control of Hypertension in Pregnancy
	CPN – BILBO-birth under 29 weeks: improving outcomes for mothers & babies
	Perinatal Morbidity Study
	Prevention of Severe Maternal Morbidity
Peggy Sagle	Evaluations of Clinical Outcome and costs of a transferrable interdisciplinary lifestyle intervention, pre- and per- pregnancy, in obese infertile Women
Peter Mitchell	Intrauterine hormones and the initiation of labor
Po-Yin Cheung	Biomonitoring of environmental contaminants in the serum of pregnant women and children living in Alberta
Radha Chari	The Predictive Value of the Second Trimester Maternal Serum Screen for Pregnancy Outcome in the High Risk Pregnancy - MSS
Rhonda Bell	Sugar Mommies: Exploring the Effects of Sugar in Pregnancy
Rshmi Khurana	PROSPER Trial (Postpartum PrOphylaxiS for PE Randomized Control Trial) Pilot: A Pilot study assessing feasibility of a randomized, placebo-controlled trial of low-molecular-weight-heparin for postpartum prophylaxis in women at risk of developing venous thromboembolism
	TIPPS - Thrombophilia in Pregnancy Prophylaxis Study
Sandy Davidge	Endothelial dysfunction in preeclampsia
	Uterine Growth Restriction (The balance between Placenta Cell Death and Tissue Remodeling in Intrauterine Growth Restriction)
Sue Chandra	Predicting successful labor induction with a bedside biochemical test
	FACT- Folic Acid Clinical Trial
Tarek Motan	Predictors of IVF Outcomes
	Retrospective Chart Review of the Effect: of Luteal Progesterone in women undergoing superovulation with gonadotropins
Venu Jain	Accuracy of Pulmonary Artery Diameter and Pulmonary Blood flow Parameters without & with Maternal Hyperoxia Challenge in the Prenatal Prediction of Severity of Fetal Lung Hypoplasia
	Does the use of fetal scalp electrode increase the risk of early-onset neonatal sepsis in term pregnancies?
	The Evolving Role of First Trimester Fetal Echocardiography
	The Role of Fetal Hypoxia in Fetal Myocardial Changes and Long-term Cardiovascular Programming
Wendy Vaudry	Maternal Pertussis Immunization Study-Immunization of Women with Diptheria and tetanus toxoid combined with acellular pertussis (Tdap) during mid third trimester of pregnancy: an evaluation of the potential for immunological protection for the Neonate
	Immunization of Women with Diptheria and tetanus toxoid combined with acellular pertussis (Tdap) during mid third trimester of pregnancy: an evaluation of the potential for immunological protection for the Neonate

Appendix T – Lipid Analysis Equipment

Currently being used		
	Agilent 1100 HPLC with:	<ul style="list-style-type: none"> • quaternary pump • temperature-controlled autosampler and column compartment • Alltech ELSD 2000 evaporative light-scattering detector • UV/visible detector • Thermo Scientific Corona Ultra RS charged-aerosol detector (new for 2013)
	Agilent 1200 HPLC with:	<ul style="list-style-type: none"> • quaternary pump • temperature-controlled autosampler and column compartment • multi-wavelength detector • HPLC- and FPLC-ready
	Agilent 6890 GC with:	<ul style="list-style-type: none"> • flame-ionization detector • autosampler
	Thermo Scientific Q-Exactive LC-MS/MS mass spectrometer with:	<ul style="list-style-type: none"> • Orbitrap technology • ultra-high 140,000 resolution • shotgun, nano-HPLC, or UPLC capabilities

Appendix U – Genotyping Service Users

Investigator	Project or Research Focus
David Brindley	Control of cell signaling and hepatic metabolism by lipins
Ing Swie Goping	Deciphering the pro-growth roll of the bad gene in breast cancer
John Greer	Neuroscience - neuromuscular control of respiration
Lori West	Cardiac Transplantation research
Rachel Wevrick	Genes and development, obesity, psychiatric disorders; mouse models for Prader-Willi syndrome; molecular basis of human genetic disorders.
Denise Hemmings	Regulation of vascular tone in pregnancy
	Human cytomegalovirus (HCMV) in cardiovascular disease such as preeclampsia
Bernard Thebaud	Normal and impaired lung development and normal and impaired adaptation of the pulmonary circulation at birth
Shairaz Baksh	Molecular understanding of both cancer initiation and progression
Philip Baker / Sandra Davidge	Umbilical artery blood flow in fetuses
Todd Alexander	Defective proteins may hold the answer to hypertension and osteoporosis; how the kidneys regulate sodium & calcium

Appendix V – Patient & Community Engagement, Qualitative Research and KT Users

Investigator	Study	Area
Claire Leblanc	Healthy Buddies WECA Project	CBR
	Alberta Coalition for Healthy School Communities	CBR
Dawn Davies	Long Hospitalizations of Infants: Parents Perspective	Qualitative
Jaynie Yang	Motor training after perinatal stroke to enhance walking	Knowledge Translation
Jerome Yager	Willingness of expectant mothers to consume broccoli sprouts	Qualitative
Kathryn Dong / Ryan Cooper	Establishment of an Institute for Inner City Health Research at the RAH	CBR
Maria Mayan	Community Practice as a Knowledge Exchange Tool	CBR
	CBR Science Shop	CBR
	Bureaucrazy: Navigating Health and Social Services in Alberta	CBR
Piush Mandhane	Sleep-E Child Project	CBR
Rhonda Bell	Sweet Moms: Maternal intake of fructose during pregnancy and implications for mother & child	Qualitative
Rhonda Bell / Catherine Field	Improving Student Self-Efficacy in Research in Human Nutrition Through Collaboration	Qualitative
Rhonda Bell and colleagues	Promoting healthy maternal body weights in pregnancy and postpartum	Qualitative and Knowledge Translation
Sherry Ann Chapman/ Maury Pinsk	Training for residents (workshops)	CBR
Sherry Ann Chapman/Jill Konkin	Integrated Community Clerkship Program (workshops)	CBR
Leah Gramlich	Integration of Nutritional Care into Care of Patients with Foregut Cancer: A Patient Perspective	Qualitative
Allyson Jones	Benefits and challenges to delivering a home-based Preoperative Rehabilitation Exercise Program (PREP) for patients waiting for total knee arthroplasty: patient and therapist perspective	Qualitative
Vazhkudai Kumaran	Delivery of Neonatal Palliative Care	Qualitative
	Developing Neonatal Palliative Care Policy in NICU	Knowledge Translation
Rebecca Gokiart	Evaluation Capacity Network: Aligning Evaluative Thinking and Practice among Early Childhood Stakeholders	Knowledge Translation
Jennifer Toye	Parent support for parents of preterm infants post NICU discharge	Qualitative
Sunita Vohra	Pediatric Integrative Medicine (PIM) Trial	Qualitative