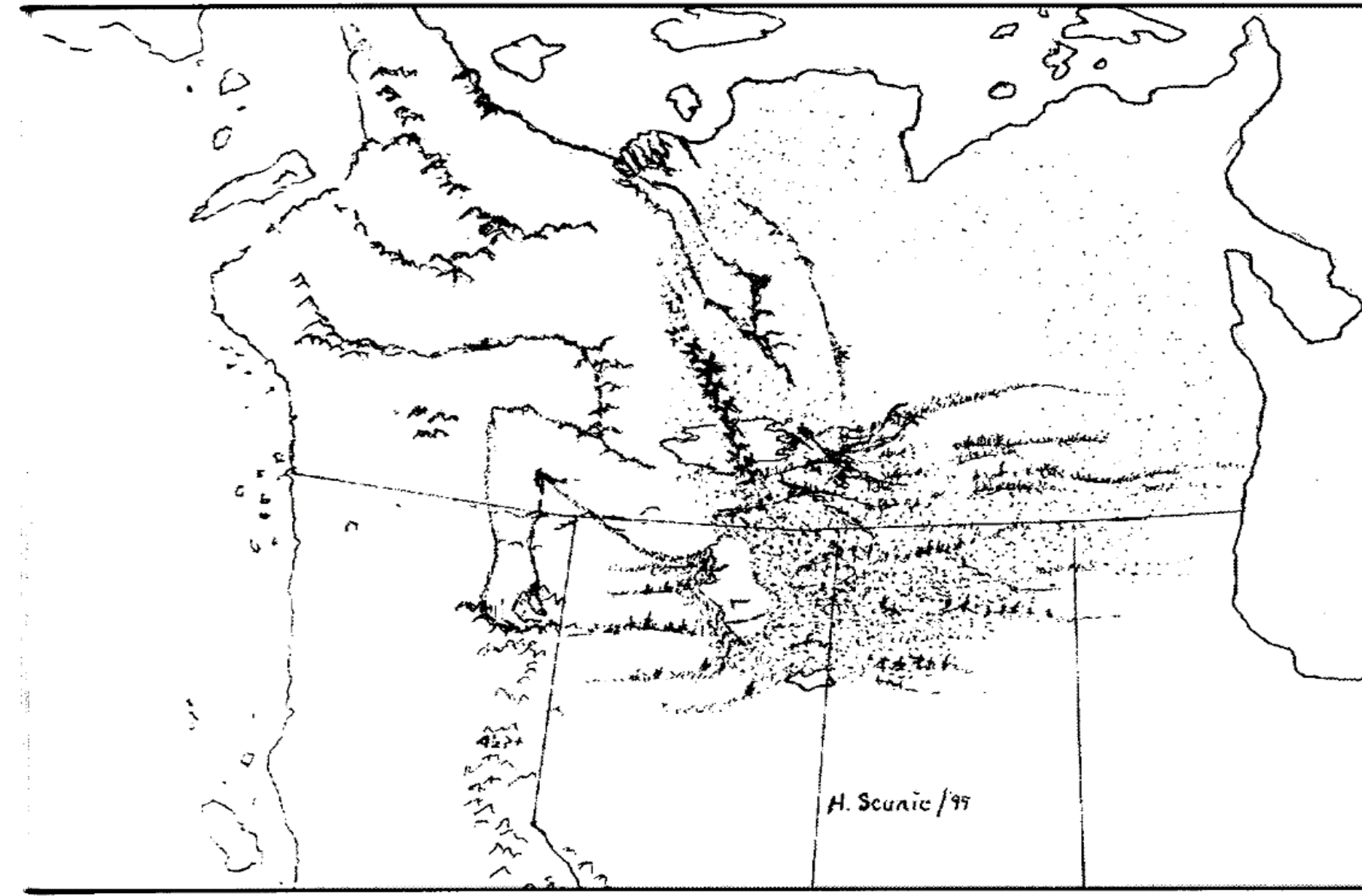


The Athabasca Basin Region

People, Communities, Context

Traditional Knowledge: Legends and Stories

- Spirit power – derived from the spiritual relationship between people and animals.
- Animals often have more power than humans.
- Creation stories speak of animal power, great floods and fires.
- Connection with other northern peoples.



The legend of the Fallen Giant creating a land bridge for the caribou and the Dene people.

*“Hotié nuhech’aníé chu nuheyatié
húton dézq, paqú peh hopüné
dáhoö;q si bënerídí hasq.”*

Paul Disain, Stony Rapids

Translation : Our language and culture is the window through which we see the world.



People and Communities

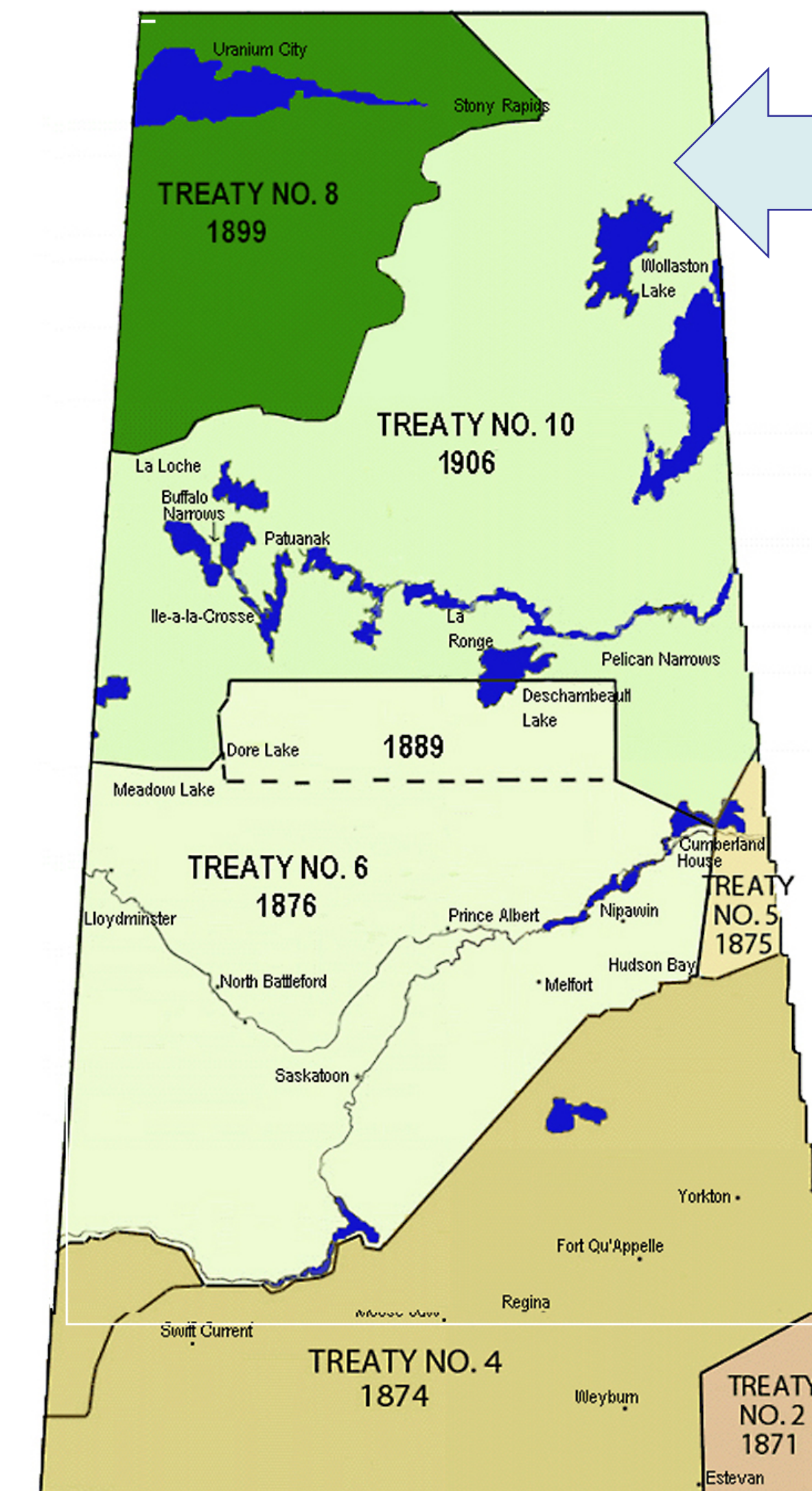
Location

- Northern Saskatchewan, Canada
- Latitude: 57th - 60th parallel
- Traditional territory and land use differ from provincially-imposed boundaries.
- Treaty 8 and Treaty 10 signatories.

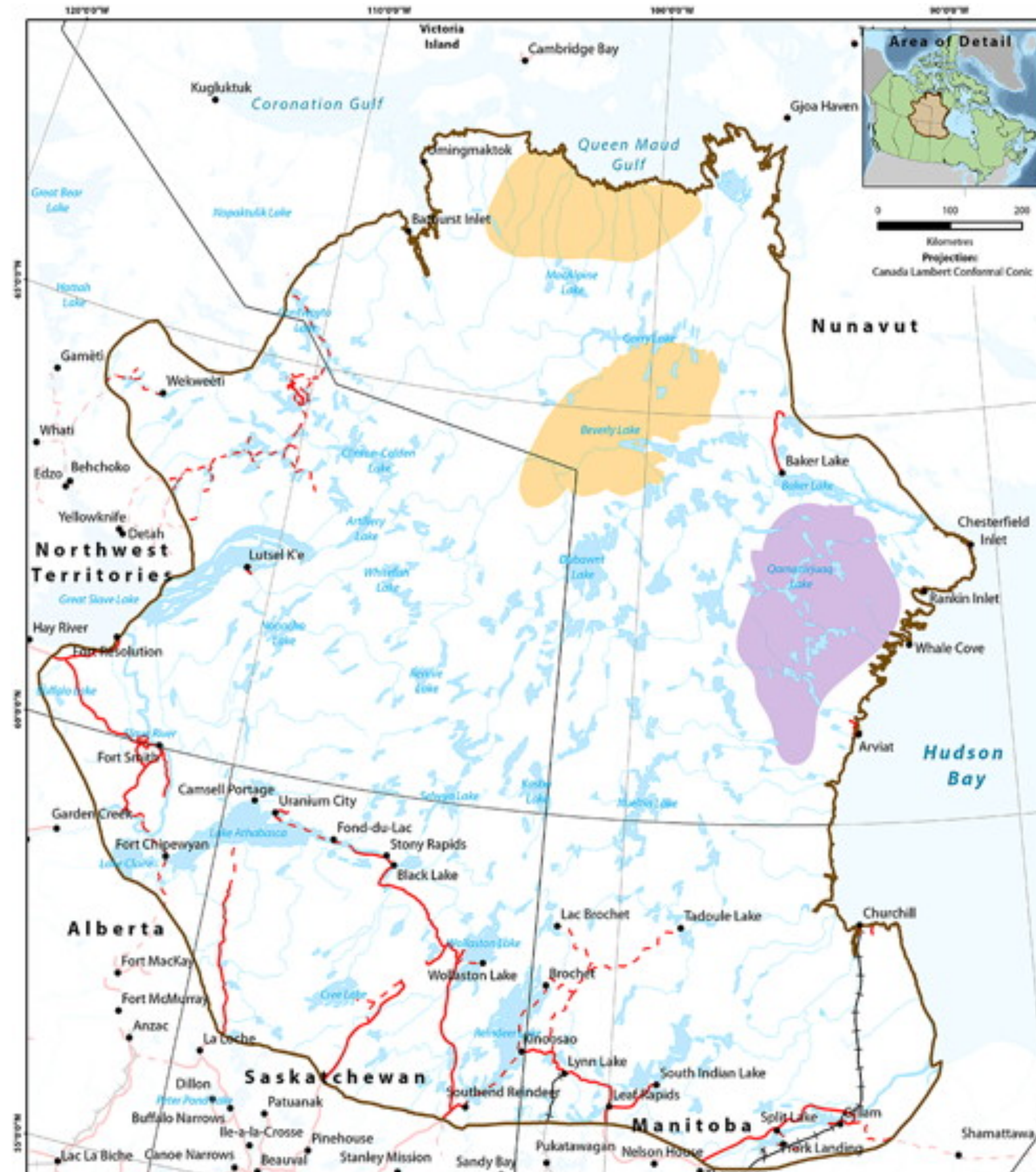
Regional Population

Total of approximately 4,500 residents.

- 4,000 are Dene people. Others identify as Cree or Métis peoples or as non-Indigenous.
- The Denesuliné language is spoken by 85% of the population.
- Caribou hunting, trapping and fishing as subsistence activities are predominant.
- Mixed wage economy from mining operations, small businesses, coops, health services and miscellaneous government activities.



Treaty 8 & 10 signatories in the province of Saskatchewan



Traditional Territory

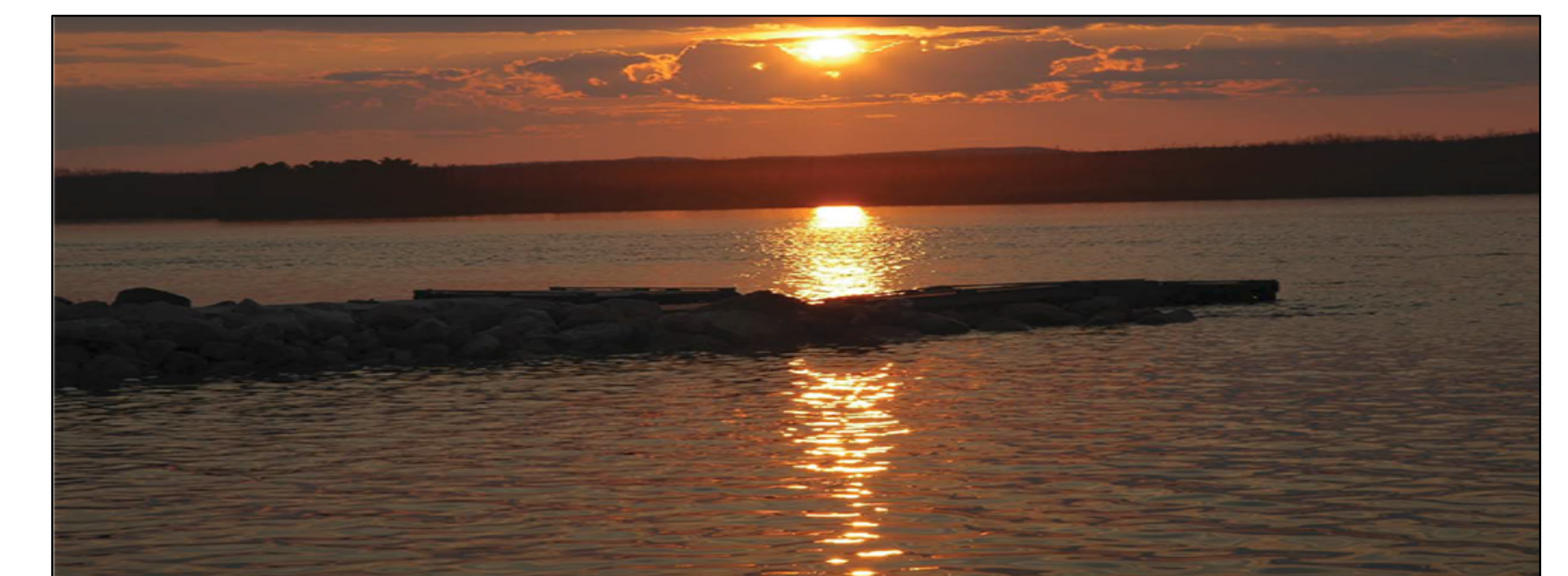
The Communities

- Hatchet Lake Denesuliné First Nation
- Wollaston Lake
- Black Lake Denesuliné First Nation
- Fond du Lac Denesuliné First Nation
- Stony Rapids
- Uranium City
- Camsell Portage



Watershed Context

- The Northern Saskatchewan Environmental Quality Committee (NSEQC) is an advisory committee of the Saskatchewan government which gives local communities a voice on environmental, socio-economic and occupational health & safety issues in regards to the mining industry.
- The Eastern Athabasca Regional Monitoring Program (EARMP) complements other monitoring programs (i.e. Environment Canada, the Nuclear Safety Commission & Saskatchewan Ministry of Environment). The primary goal is to assess ecological integrity of northern watersheds. Active involvement by community members in selection of sampling locations and sample collection. Funded by industry and by government of Saskatchewan.



Next Steps

Tracking Change Project 2017

- Canoe trip with youth and other members of each community, organized by the Prince Albert Grand Council (PAGC).
- Identification of traditional topographical place-names as a way of understanding and documenting traditional ways of knowing.

Bibliography

1. Canada North Environmental Services Limited Partnership (CanNorth) (2016). *Eastern Athabasca Regional Monitoring Program, 2015/2016 Community Report*. Retrieved December 28, 2016 from <http://earmp.ca/links/EARMP%20Community%20Report%2020152016Final%20Report.pdf>
2. Hoffman-Mercredi, L., Coutu, R. (1999). *Inkonze: The stones of traditional knowledge*. Edmonton: Thunderwoman Ethnographics.
3. Prince Albert Grand Council (PAGC). Retrieved December 28, 2016 from <http://pagc.sk.ca>
4. Reynolds, M. (Ed.). (1979). *Dene Stories*. Saskatoon: Saskatchewan Indian Cultural College.