

Reframing Library Architecture

Greg Whistance-Smith



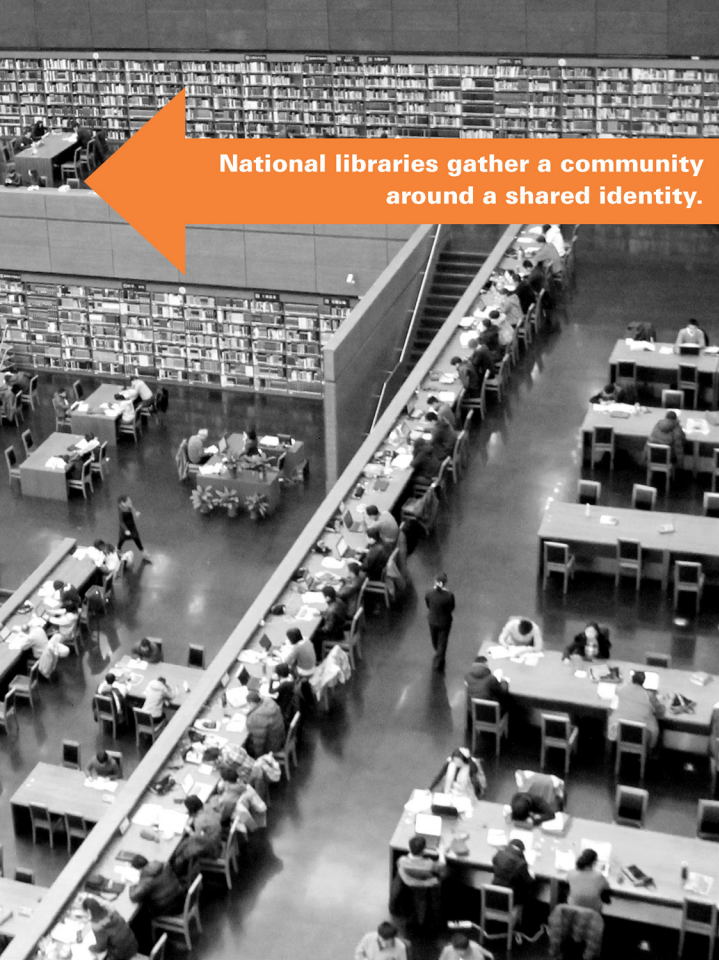
A Spatial Philosophy for Public Libraries

Library as a Medium.....	01
Framing Understanding	02
Mosaic Frameworks	03
Augmenting Spaces	04
An Example Design	05

libraries gather a community



... .. around a collection



National libraries gather a community around a shared identity.

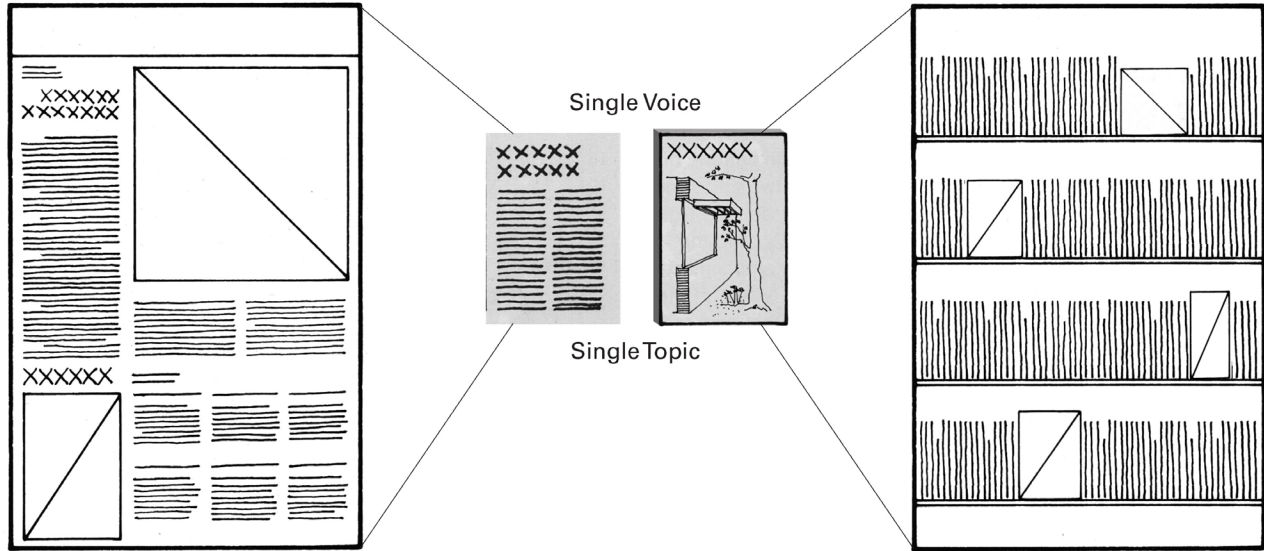


Academic libraries gather a community around a search for knowledge.

The Public Library gathers a community



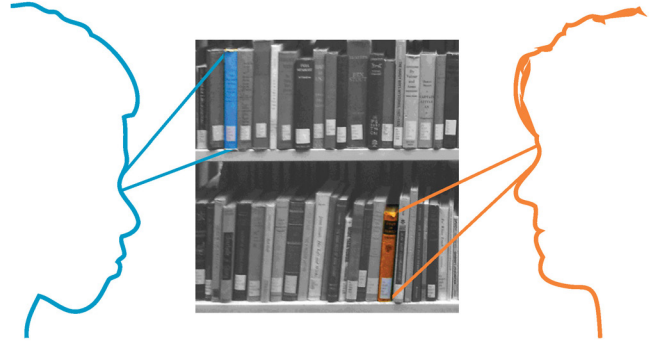
to empower it!



“The electric telegraph, when crossed with typography, created the strange new form of the modern newspaper. Any page of the telegraphic press is a surrealistic mosaic of bits of ‘human interest’ in vivid interaction.”

“When two seemingly disparate elements are imaginatively poised, put in apposition in new and unique ways, startling discoveries often result.”

– McLuhan



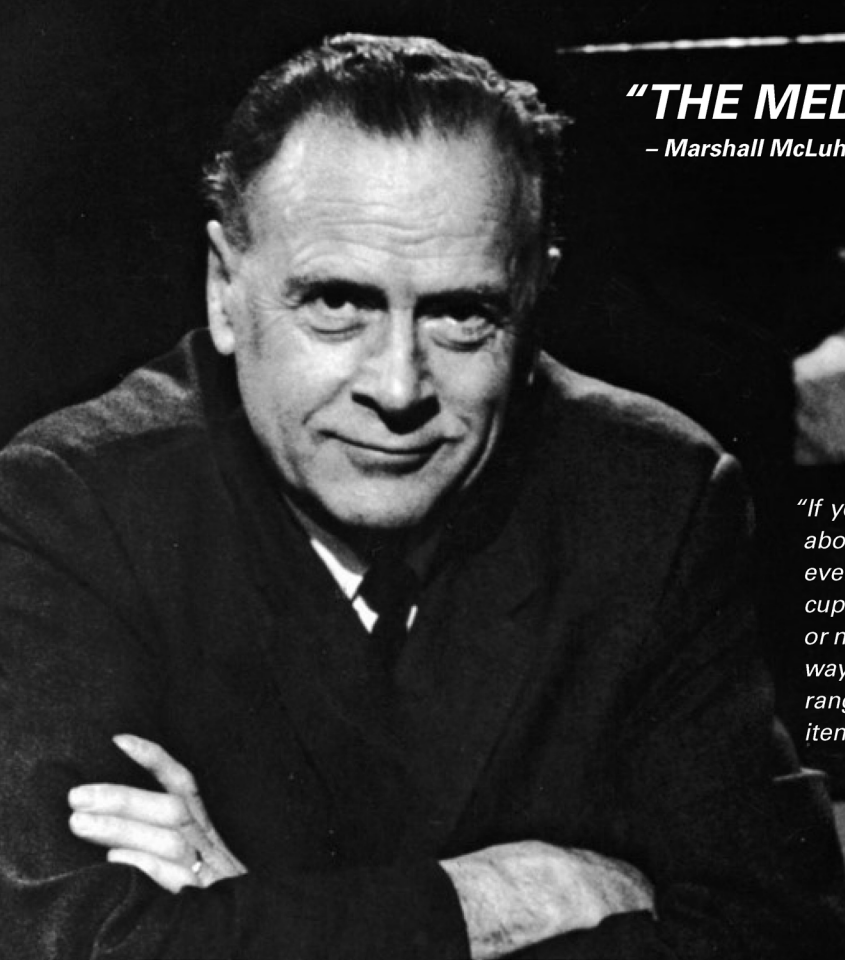
Mosaic surfaces allow diverse browsing experiences.

Each viewer will be attracted to different parts of the whole.



Visual heirarchies break this, orienting a viewer's attention for various ends.





"THE MEDIUM IS THE MESSAGE"

- Marshall McLuhan



"If you say the medium is the message you're talking about a medium meaning a milieu... Every innovation, every new gadget like a pocket calculator or coffee cup or TV camera, brings with it a whole environment or milieu of not just assumptions but ways of thinking, ways of feeling, ways of organizing your life - a whole range of services and disservices without which the item would not function."⁵

And the message of the library is:



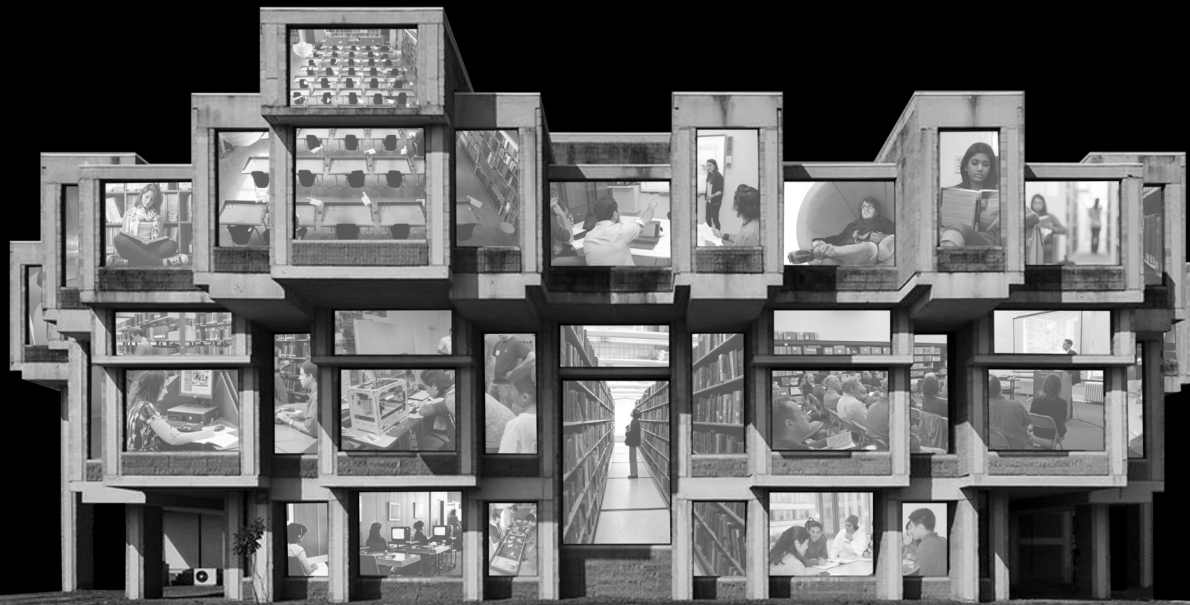
equality of access



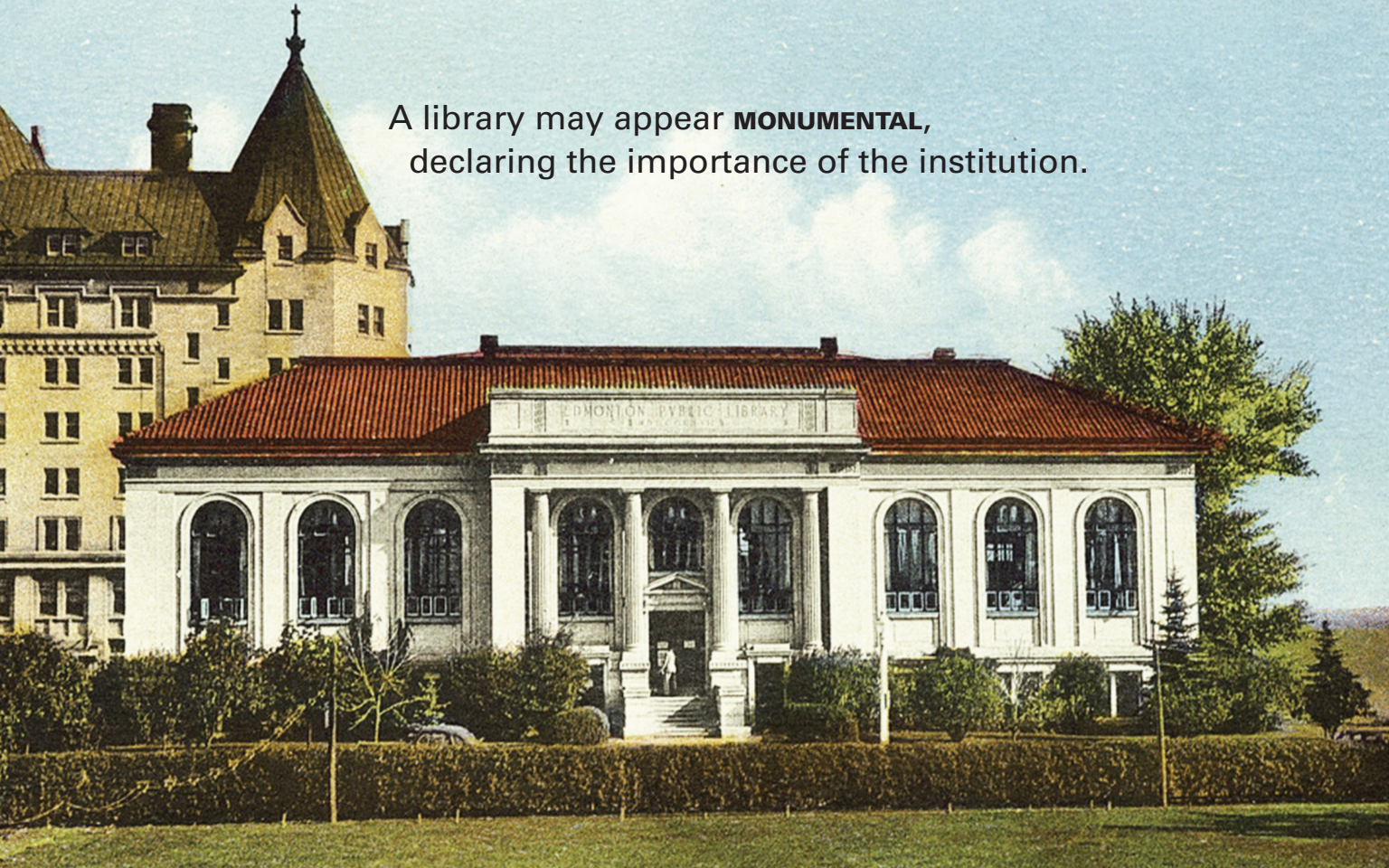
freedom to explore



and room for every voice!



A library may appear **MONUMENTAL**,
declaring the importance of the institution.



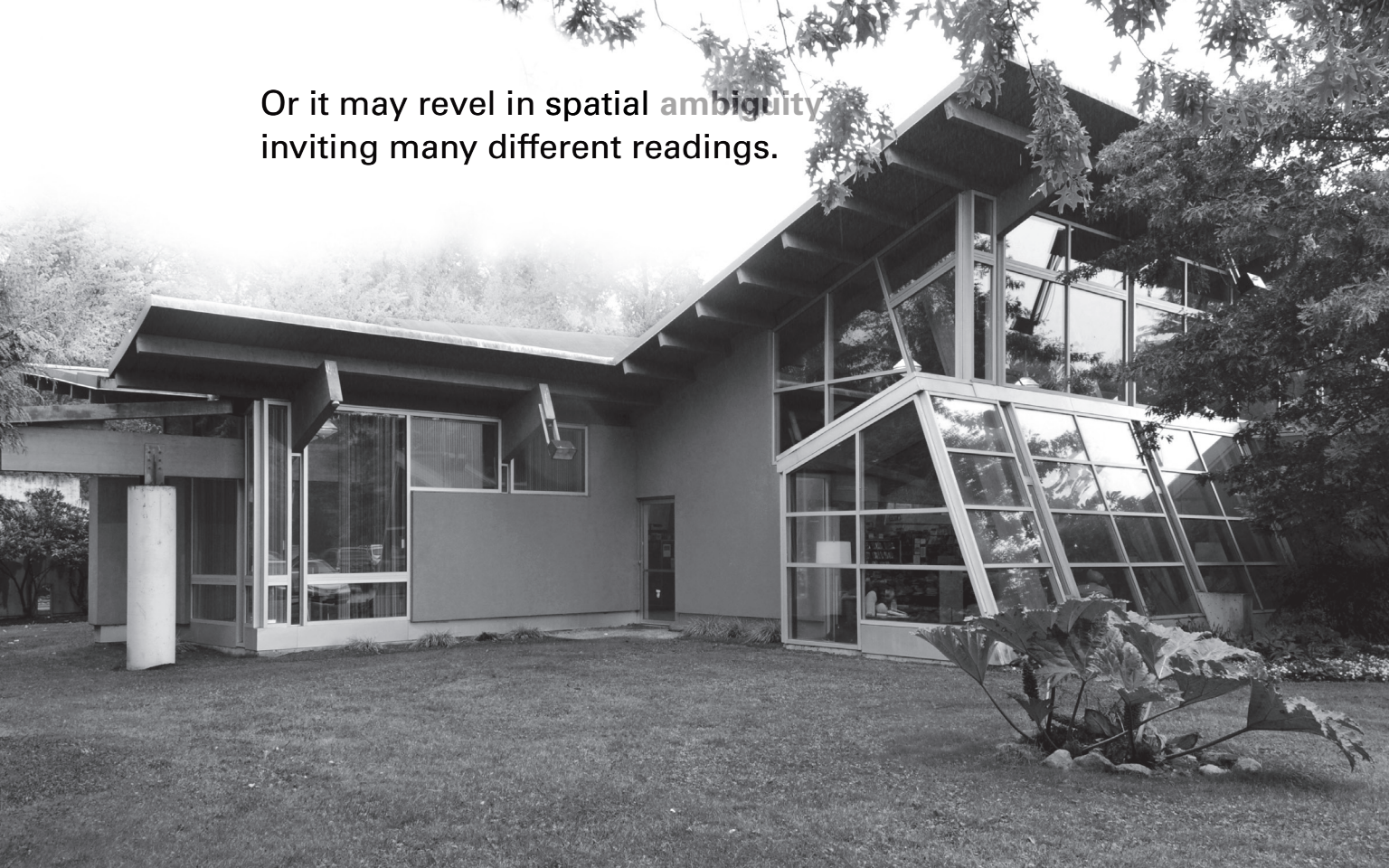
It may seem **alien** compared to neighbouring buildings, signifying a *cutting-edge* space.



It may blend seamlessly into the neighborhood fabric,
conveying deep integration into community life.



Or it may revel in spatial ambiguity
inviting many different readings.







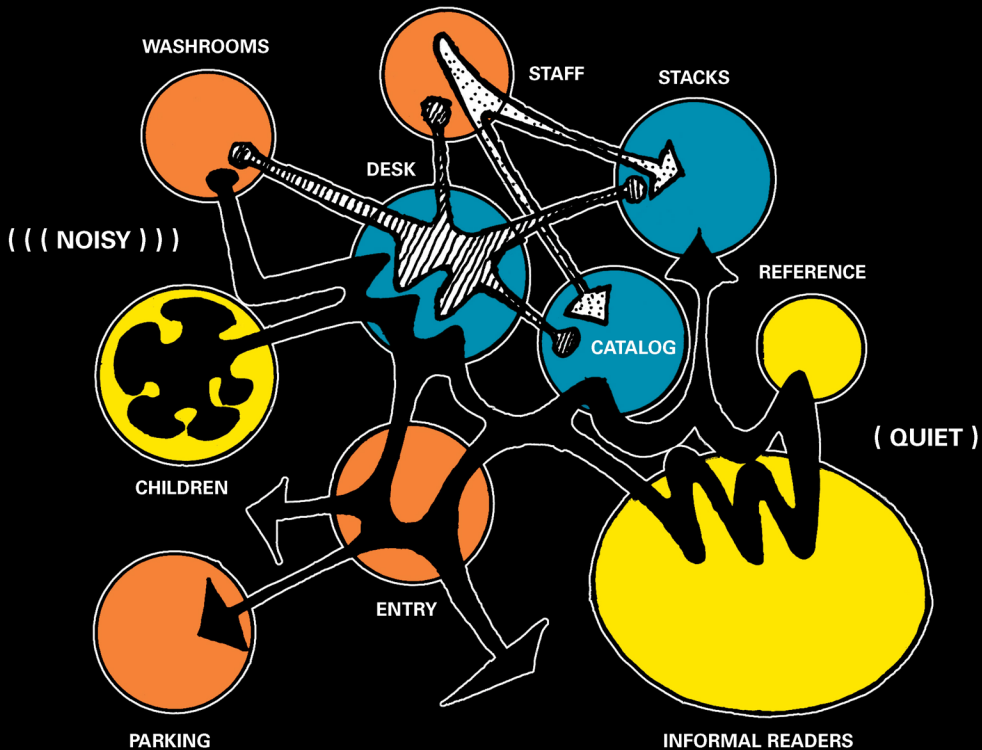


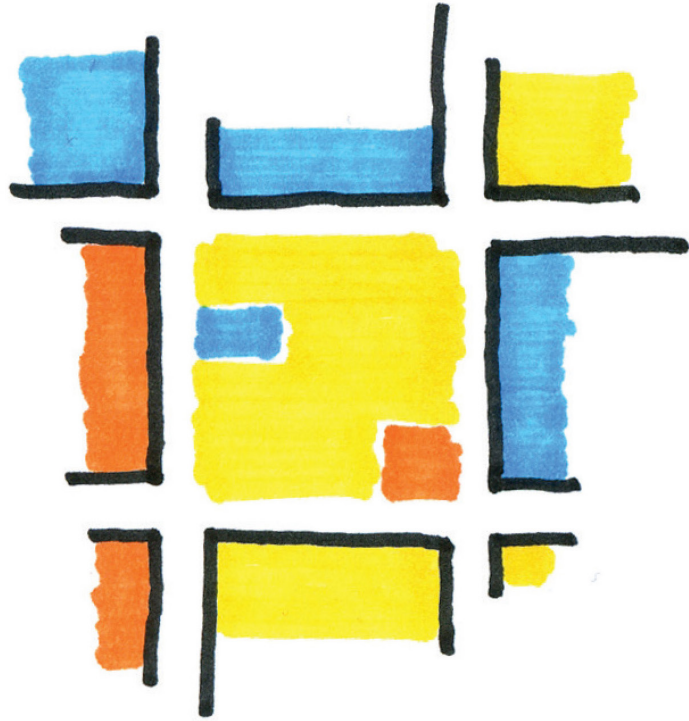


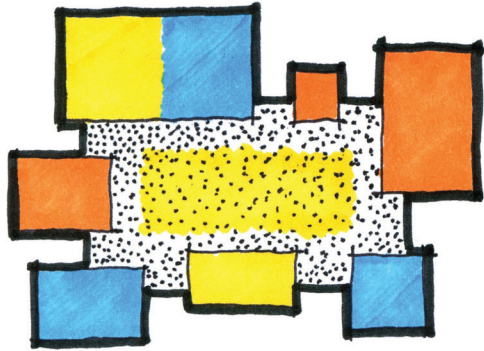
**Collection as commodity?
Collection as treasure?**



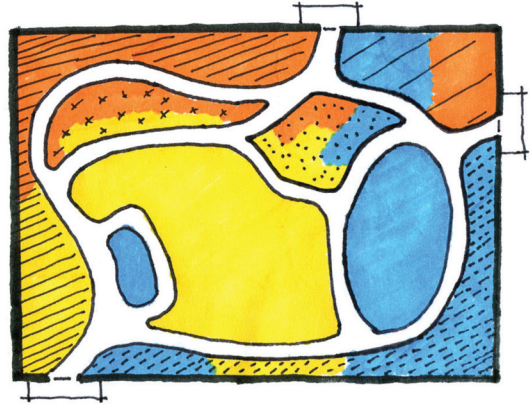






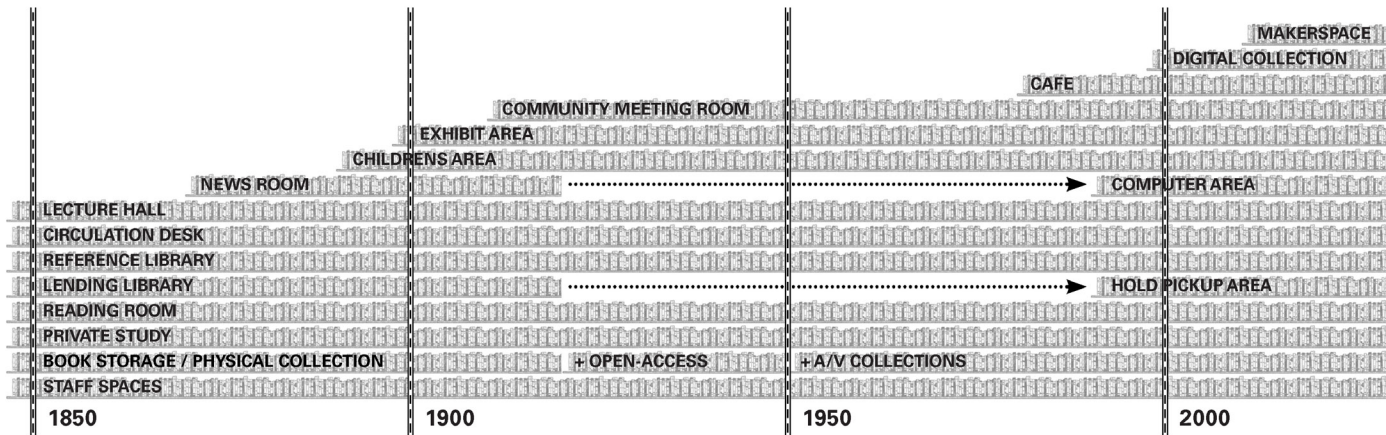


'Village Square' Plan



'Strolling Garden' Plan





The gradual increase of public library areas from 1850 to the present.



Reading Room



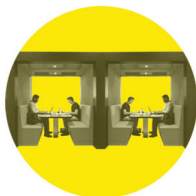
Event Hall



Children's Area



Network Access



Meeting Rooms



Private Niche



Media Stacks



Service Desk



Lending Library



Makerspace



AR Browsing



Staff Areas



Cafe & Gallery



Mech. / Servers

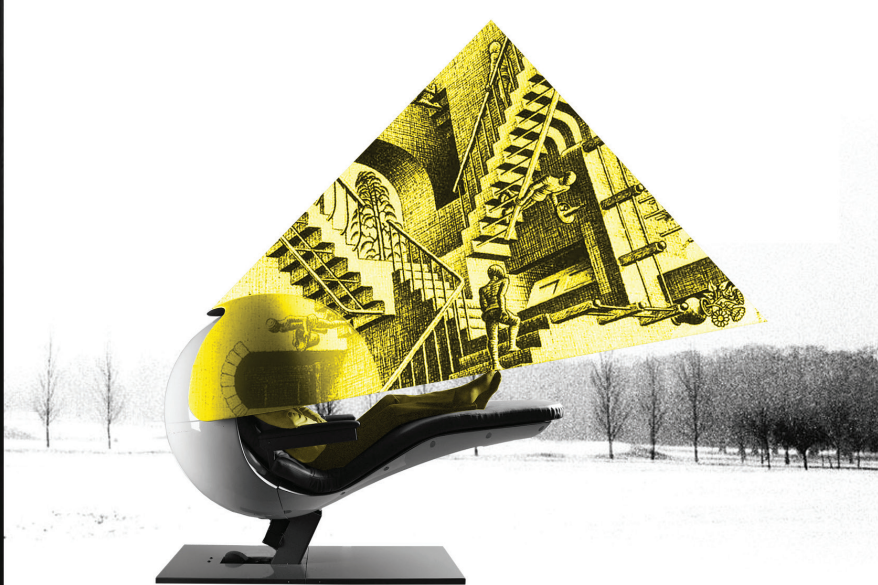


Washrooms

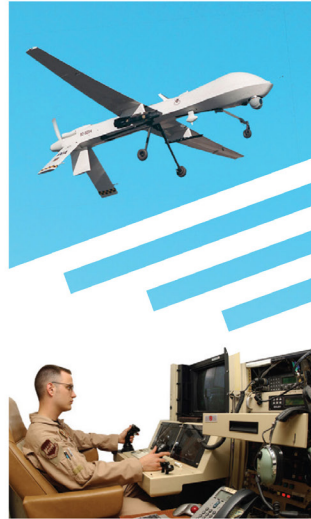
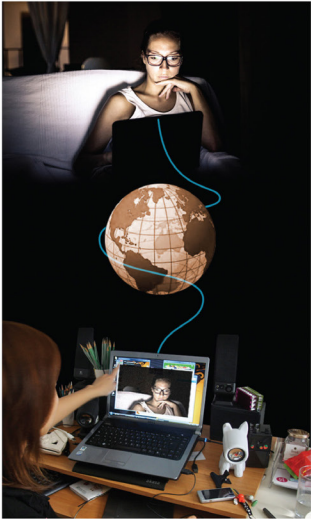
COMMUNICATION
COLLECTION
SUPPORT

Reading Room





Private Niche

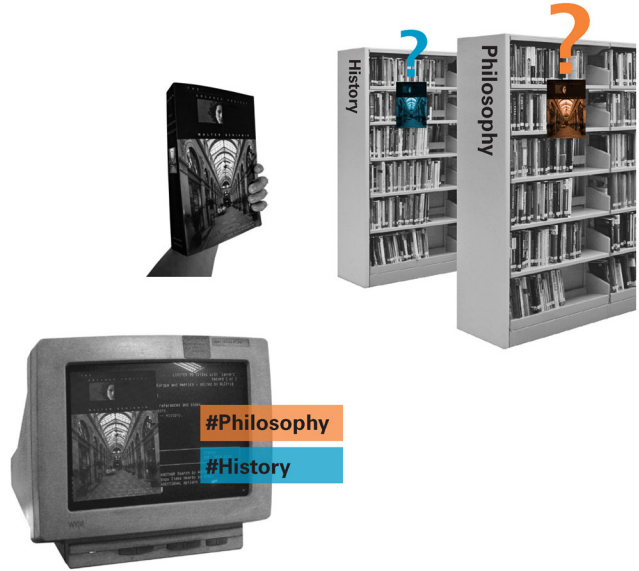


“If our new media constitute so complete a range of expressiveness as both to enhance and almost supplant speech itself, then we have moved into the period of post-literacy. ... Not that we are to be deprived of books any more than of ancient manuscripts. But it is plain that our new culture is not going to lean very heavily on any one means of encoding experience or of representing reality.”

– McLuhan



Extreme Capacity



Flexible Categorization

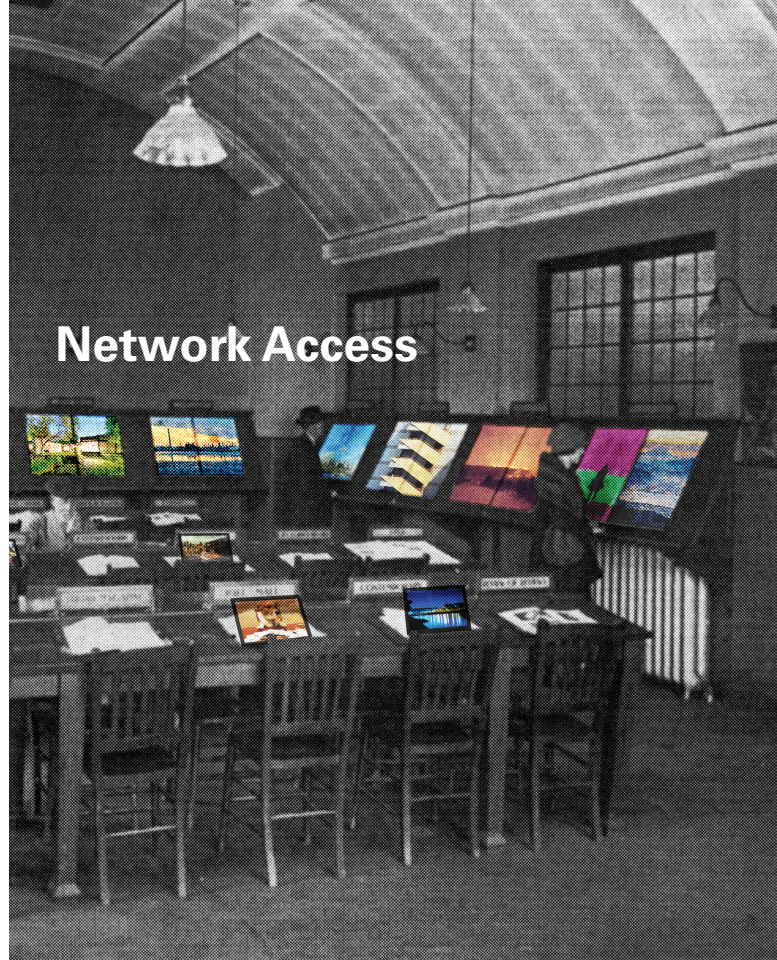
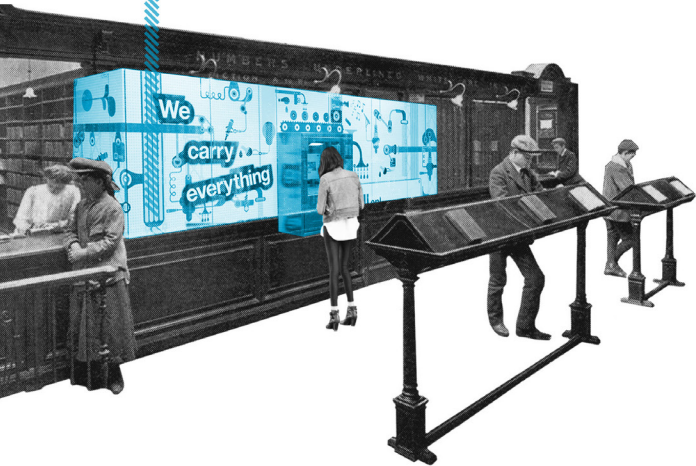


Visual Browsing versus Full-body Browsing

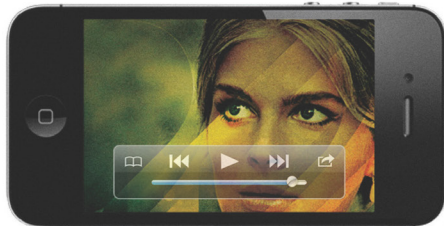
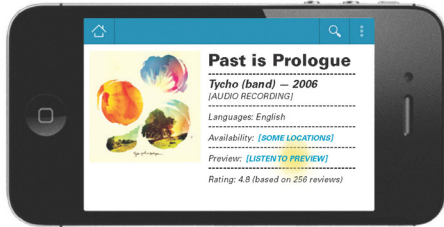




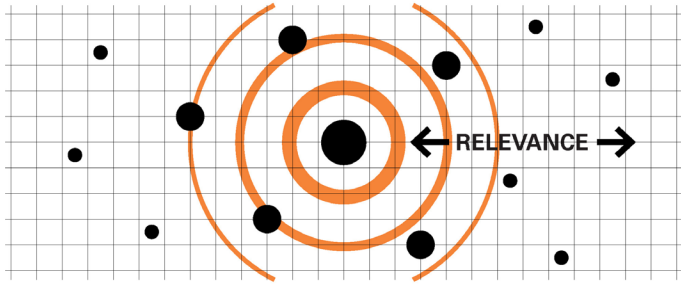
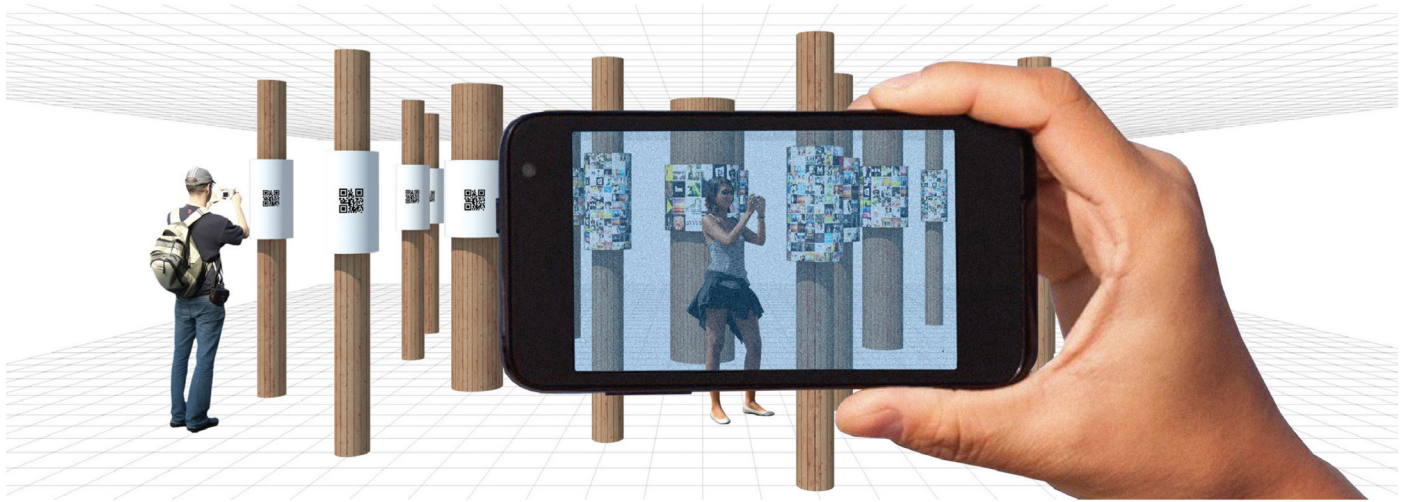
Lending Library



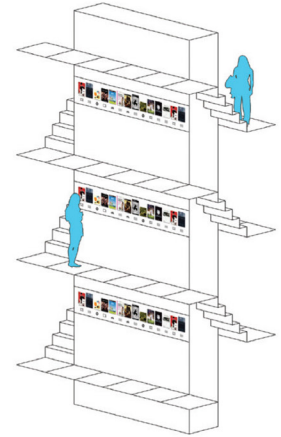
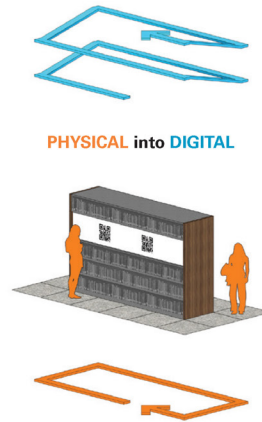
Network Access



Augmented Reality Browsing



"Glade" Interface



“Infinite Tower” Interface

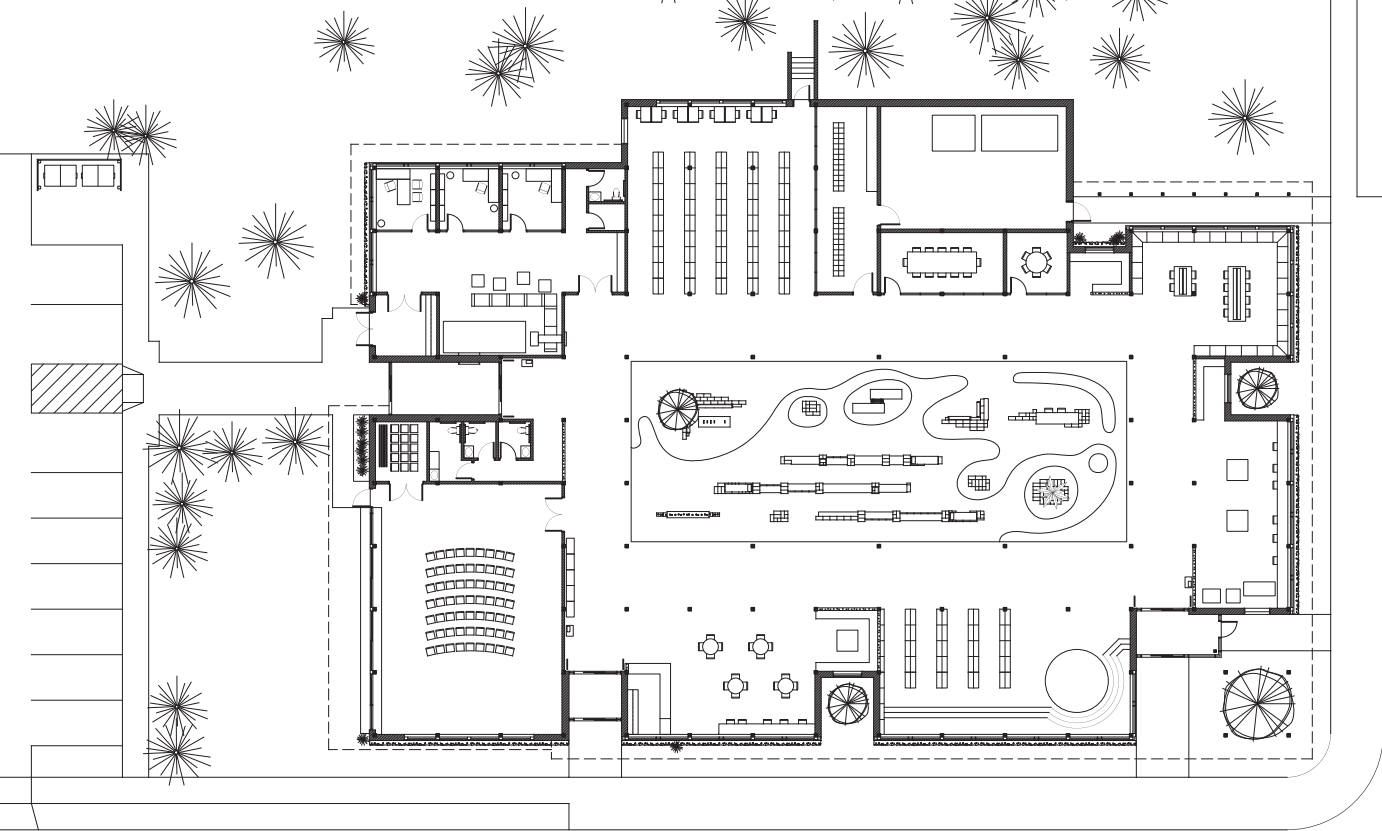


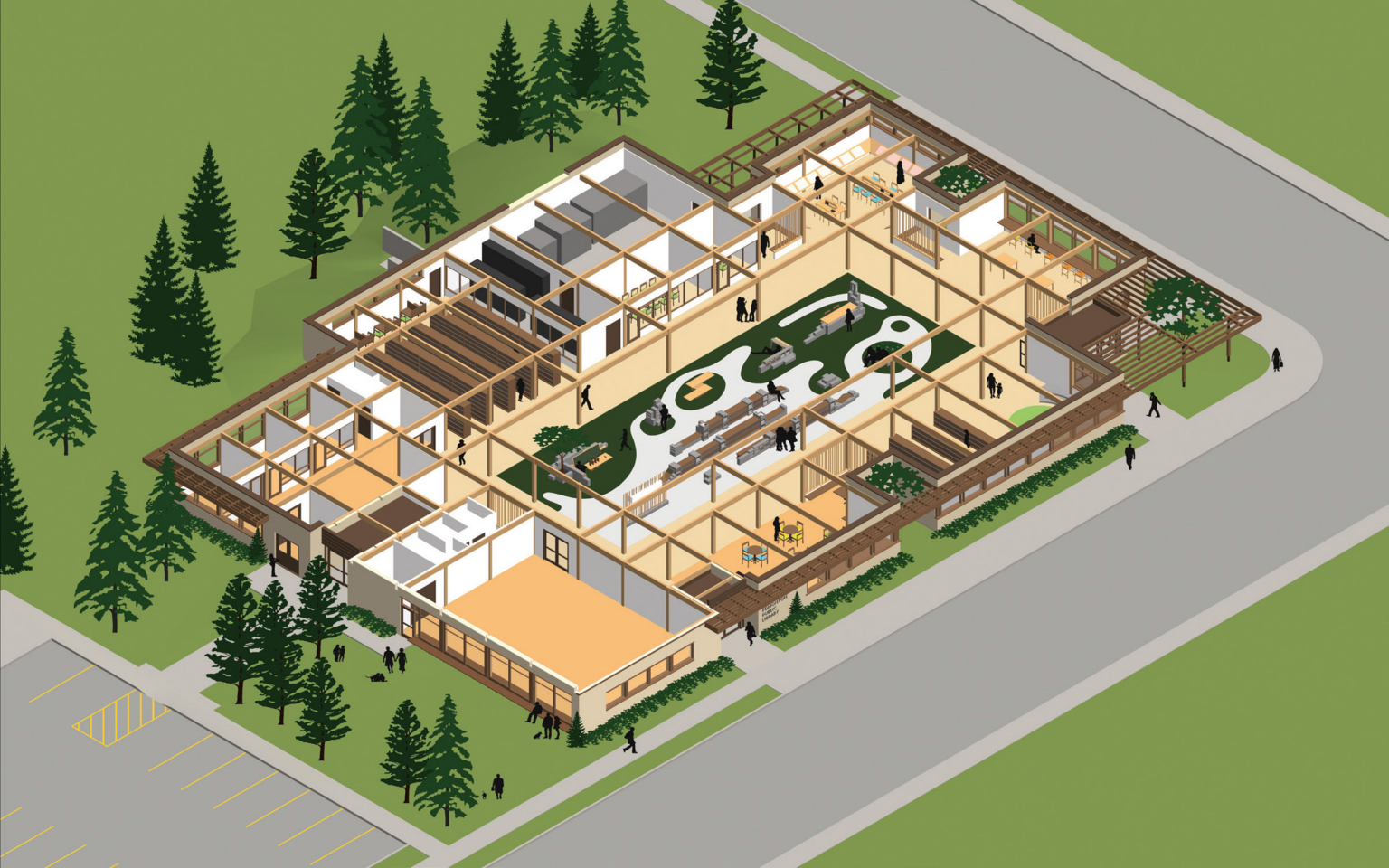
An Illustrative Design





scale 1:750









transverse section



longitudinal section





Q & A

gregws.ca
@greg_ws

