



women & children's  
health research institute



# 2014 Research Day Program Book

November 12, 2014 | Westin Hotel



# Acknowledgments

*The Women & Children's Health Research Institute (WCHRI) is a partnership between the University of Alberta and Alberta Health Services, with the generous support of the Stollery Children's Hospital Foundation and the Royal Alexandra Hospital Foundation. Also, the Faculty of Medicine & Dentistry provides operating and in-kind support.*

## The University of Alberta and the Faculty of Medicine & Dentistry

The University of Alberta strives to create and support an environment of research excellence across the university to fuel knowledge advancement, discovery and innovation; all of which provide significant contributions to society provincially, nationally and globally. It is through the continued support of the University of Alberta's Faculty of Medicine & Dentistry (FoMD), that WCHRI can house many of its core groups and its entire administrative staff. FoMD also provides partial funding for WCHRI's operating expenses, without which WCHRI would not be able to manage its many grants programs and research support initiatives.



## Alberta Health Services

Alberta Health Services is a strong and active supporter of WCHRI and their guidance has been invaluable in ensuring that women's health and Alberta Health Services' standards in the delivery of clinical care, wellness and prevention in Alberta remain a focus of WCHRI's mandate.



## The Stollery Children's Hospital Foundation

The Stollery Children's Hospital Foundation is dedicated to raising funds for specialized equipment, sub-specialty medical education to train the best of the best, research to pave the way to the discovery of new treatments or cures for child health issues and specialized programs that improve patient and family outcomes at the Stollery Children's Hospital.



## The Royal Alexandra Hospital Foundation

The Royal Alexandra Hospital Foundation inspires community support for their healthcare facilities. The Foundation empowers compassionate, leading-edge patient care through education, research, technology and facility enhancements. They provide support for the Lois Hole Hospital for Women and a growing number of specialized centres of healthcare located at the Royal Alexandra Campus.



# Welcome from the Director

Welcome to the 7th Annual Women & Children's Health Research Institute Research Day!



The past year has been an exciting one for WCHRI and I am thrilled to see this excitement continue at our 7th annual Research Day. Every year, more trainees and members join us to share the outcomes of their research over the past year. We have over 200 abstracts submitted this year, with 48 oral presentations planned. The quality of abstracts is once again excellent, making the selection of oral presentations challenging.

We are honoured this year to welcome our distinguished Keynote Speaker, Dr. Martin Offringa. Dr. Offringa is a neonatologist and epidemiologist who is the Programme Head for Clinical Health Evaluative Sciences (CHES), Hospital for Sick Children Toronto, Senior Scientist and Head of the Child Health Evaluative Science Program at The Hospital for Sick Children, and Chair of the International Forum for Standards for Research with Children. He holds a clinical appointment in the Department of Neonatology at SickKids and is a professor in the Department of Paediatrics at the University of Toronto.

Dr. Offringa's keynote presentation titled "Medicines for Children – How to Make it Work" will focus on the very current topic on the importance of developing safe and effective medicines for children. As has been noted by Dr. Offringa and colleagues, most people are surprised to learn that many of the medications given to children in Canada have never been adequately studied or even formally approved for the conditions they are commonly prescribed to treat. Thus, creating new knowledge about therapeutic products used by our children and youth will lead to improved regulations for better health outcomes. We have much to learn from Dr. Offringa as he participates in this year's WCHRI Research Day.

Research Day will begin with three concurrent workshop sessions. One will focus on career options for trainees in Clinical and Basic training programs. A second will provide an update to our members on the Maternal, Newborn, Child and Youth Strategic Clinical Network and SUPPORT units, and the third will be a topic by our Keynote Speaker, Dr. Martin Offringa on "Effective Recruitment Strategies for Paediatric Trials".

This year, due to increased demand, we have divided the Poster presentations into two sessions, one in the morning and one in the afternoon. These will be interspersed with two concurrent oral sessions. Our day will close with a reception. During the day, I hope you will all take the opportunity to network, socialize and support our trainees. We invite you to take the opportunity to meet, mingle and learn more about your colleagues and their research and hope that you will find the day interesting and informative, as well as an opportunity to have some fun.

It is vital for me to mention that the research at WCHRI, and our commitment to improving women and children's health, could not happen without the continued partnership of the University of Alberta and Alberta Health Services and the very generous support of the Stollery Children's Hospital Foundation and the Royal Alexandra Hospital Foundation.

Please keep an eye out for notification of next year's Research Day and mark the date when it is confirmed.

We thank everyone who contributed to another successful and exciting Research Day after a year of hard work! Enjoy the day!

**Dr. Sandy Davidge**  
**Director**  
**Women & Children's Health Research Institute**

# WCHRI Overview

The best hospitals with the best care are the ones who invest in discovery research. These are the innovators and leaders, shaping our health system for the future. WCHRI acts as a research arm for the Stollery Children's Hospital and the Lois Hole Hospital for Women and is the steward of their respective Foundations' investment in health research. The vision of WCHRI is to improve health outcomes for women and children through research; a vision that is shared by the U of A and Alberta Health Services (AHS).

With core funding from the Stollery Children's Hospital Foundation (SCHF) (focused on improving children's health) and the Royal Alexandra Hospital Foundation (RAHF) (focused on improving women's health), the vision of WCHRI can be realized. This unique structure creates a collaborative environment with a shared focus on maternal, fetal and newborn health and the families of these patients. The value of WCHRI is particularly important in Edmonton as the most complicated pregnancies are delivered at the Lois Hole Hospital for Women along with care of the newborns while the Stollery Children's Hospital cares for children from birth through adolescence.

**WCHRI catalyzes and facilitates women and children's health research through a variety of grant programs, research infrastructure/support and strategic partnerships within the university and the broader research community.**

WCHRI goals are:

- To facilitate basic and applied health research activities focused on women and children's health
- To encourage collaborative and translational research within the university and outside (community, industry, national/international institutions)
- To promote training in health research with a focus on women and children
- To provide a unified team approach for facilitating communication and establishing representation to the public, granting agencies and authorities
- To ultimately translate this knowledge for the purpose of providing the best clinical health outcomes and clinical practice guidelines
- To impact locally, provincially, nationally as a catalyst for research and an advocate for women and children's health
- To provide a mechanism for performance accountability
- To be a vehicle for communication of research outcomes

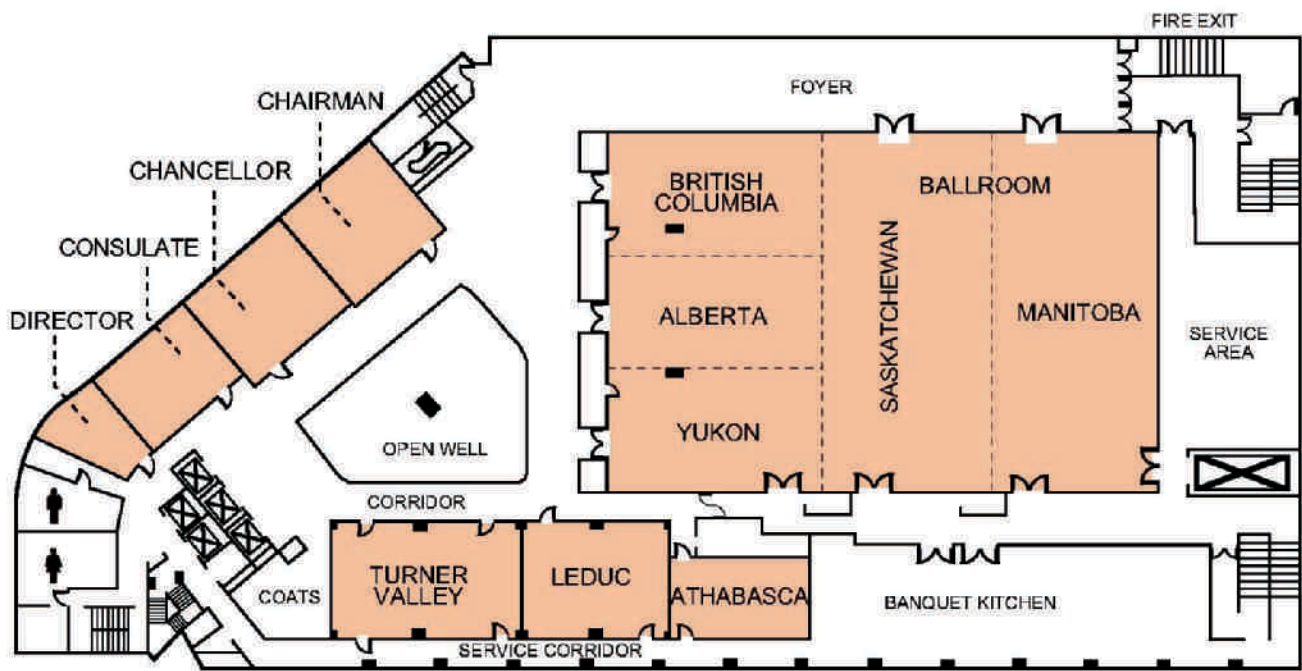
To build on our achievements in women and children's research, we continue to develop strategic initiatives dedicated to enhancing the current investment in research and leveraging new provincial and national opportunities.

*This event has been approved by the Canadian Paediatric Society for a maximum of 5.5 credit hours under the Accredited Group Learning Activity (Section 1) as defined by the Maintenance of Certification program of The Royal College of Physicians and Surgeons of Canada. The specific opinions and content of this event are not necessarily those of the CPS, and are the responsibility of the organizer(s) alone.*

# Program at a Glance

Time					
07:00	07:45	<b>Registration / Poster Set-up</b>			
07:45	07:55	<b>Welcome - Dr. Sandy Davidge - Ballroom</b>			
08:00	08:50	<b>Workshop #1 Chairman Room</b> <i>Update on the Maternal, Newborn, Child and Youth Strategic Clinical Network and SUPPORT Units</i> <b>Dr. Suzanne Tough and Dr. Lisa Hartling</b>	<b>Workshop #2 Turner Valley Room</b> <i>Career Options for Trainees in Clinical and Basic Research Training Programs</i> <b>Ms. Kathryn Ambler, Dr. Eric Loo, Dr. Luis Schang and Dr. Alan Underhill</b>	<b>Workshop #3 Leduc Room</b> <i>Effective Recruitment Strategies for Paediatric Trials</i> <b>Dr. Martin Offringa</b>	
09:00	10:30	<b>Oral #1 Chairman Room</b> Child Health - GI, Metabolism and Lung	<b>Oral #2 Chancellor Room</b> Child Development - Neurocognitive and Mental Health	<b>Oral #3 Leduc Room</b> Maternal - Global Health, Nutrition and Perinatal Immune System	<b>Oral #4 Turner Valley Room</b> Pediatric Subspecialty Residents
10:30	12:00	<b>Poster Viewing &amp; Judging - Ballroom</b>			
12:00	12:45	<b>Lunch - Ballroom</b>			
12:45	13:30	<b>Keynote Speaker - Dr. Martin Offringa</b> <i>Medicines for Children - How to Make it Work</i>			
13:45	15:15	<b>Oral #5 Chairman Room</b> Womens Health - Pregnancy Research	<b>Oral #6 Chancellor Room</b> Women and Children - Oncology	<b>Oral #7 Leduc Room</b> Child Health - Congenital Abnormalities and Transplant	<b>Oral #8 Turner Valley Room</b> Pediatric Residents
15:15	16:45	<b>Poster Viewing &amp; Judging &amp; Reception - Ballroom</b>			
16:45	17:30	<b>Wrap-up - Ballroom</b>			





**BANQUET LEVEL**

# Detailed Program of Events

## 07:00 - 07:45

Registration, Poster Set-up & Breakfast - Foyer

---

## 07:45 - 07:55

Welcome - Ballroom

Dr. Sandy Davidge, Director, WCHRI

---

## 08:00 - 08:50

### Workshop #1 – Chairman Room

*Update on the Maternal, Newborn, Child and Youth Strategic Clinical Network and Alberta SPOR SUPPORT units*

**Dr. Suzanne Tough and Dr. Lisa Hartling**

Strategic Clinical Networks (SCNs) are creating improvements within focused areas of health care. To get the most out of our health care system, Alberta Health Services has developed networks of people who are passionate and knowledgeable about specific areas of health, challenging them to find new and innovative ways of delivering care that will provide better quality, better outcomes and better value for every Albertan. The new Maternal, Newborn, Child and Youth SCN was announced this fall.

SPOR SUPPORT Units are specialized, multidisciplinary research service centres located in provinces or territories across Canada. They provide necessary enabling infrastructure to assist researchers who conduct patient oriented research with access to data platforms and services, tools, methods, training, and connections. SPOR SUPPORT Units will work with health services to support the use of research evidence in decision-making and inform best practices. SPOR Networks are operating funded “networks” that will be established through a competitive process at CIHR that is still under development. CIHR currently plans to fund 2-3 such networks per year.

The Scientific Director of the new SCN (Dr.Suzanne Tough) and a representative of the SPOR SUPPORT Unit (Dr. Lisa Hartling) will share with attendees:

- Updates on the status of the SCN
- What it will mean for Albertans
- What it will mean for clinical and basic researchers in Alberta
- QA about Alberta’s Support Unit
- Timelines for implementation of both

**Dr. Suzanne Tough** is a Professor with the Departments of Paediatrics and Community Health Sciences in the Faculty of Medicine at the University of Calgary and a Health Scholar supported by the Alberta Innovates – Health Solutions. She is also the Scientific Director of the Maternal, Newborn, Child and Youth Strategic Clinical Network and of the Alberta Centre for Child, Family and Community Research, an organization whose vision is to improve child, family and community well-being through applied research. Her research program focuses on improving health and well-being of women during pregnancy to achieve optimal maternal, birth and early childhood outcomes. Suzanne is the Principal Investigator of the All Our Babies Study, a cohort with 3,200 mother-child pairs that is investigating the impact of genetic and environmental factors on maternal-child health. The underlying aim of her research program is to optimize birth and childhood outcomes by creating evidence that informs the development of community and clinical programs and influences policy

**Dr. Lisa Hartling** is an Associate Professor in the Department of Pediatrics at the University of Alberta. She is also Director of the Alberta Research Centre for Health Evidence, the University of Alberta Evidence-based Practice Center, and the Cochrane Child Health Field. She is Joint Lead of the KT Platform for the AB SPOR SUPPORT Unit.

---

**08:00 – 08:50**

**Workshop #2 – Turner Valley Room**

*Career Options for Trainees in Clinical and Basic Research Training Programs*

**Ms. Kathryn Ambler, Dr. Eric Loo, Dr. Luis Schang and Dr. Alan Underhill**

The purpose of the workshop is to introduce the audience to diverse possible career pathways and trajectories that they may like to pursue post-graduation. The four panelists will give personal and/or work-related information including such programs as: the Clinical Investigator program; Mitacs; MD/PhD program; the MatCH program at the UA; translational research, etc. Discussion will include mechanisms of the training process, non-traditional career trajectories and how to get there.

There will be a presentation followed by QA and interaction with the audience. At session end, attendees will have an appreciation of:

- Various research career trajectories in both basic and clinical sciences
- Practical guidelines and information sites for assessing career choices
- The planning process needed to help identify both career objectives and professional development needs
- Effective goal setting
- How to find and work with mentors to implement career plans

Panelists

**Ms. Kathryn Ambler** is a Manager of Health Technology and Services Policy with the Government of Alberta. A physiologist at heart, she entered graduate studies to investigate blood pressure regulation during pregnancy with the intention of becoming a professor. Graduating with a Master of Science degree and significant allergy to mice, she opted to pursue a career in research management and has been facilitating high quality research that supports evidence-based decision making ever since. Her professional focus is on optimization of health care service delivery and has included work in the fields of health technology assessment, obesity management, patient safety and laboratory services. Her discussion will highlight career paths beyond academia with a focus on developing translatable skills and leveraging graduate training for success in the workforce.

**Dr. Eric Loo** is the Business Development Specialist at Mitacs. Mitacs offers programs, such as Accelerate, that can offer graduate student and post-doctoral level trainees a chance to participate in an industry-led research project. Through these internships, trainees can gain an appreciation of deploying their research knowledge within a community/industry setting while building very important professional networks that can help further their careers. In addition, Mitacs offers programs to help facilitate globally reaching research projects within our partner countries. Mitacs Globalink can offer students a chance to travel to one of our partner countries to conduct 3-6 month long research projects with an international academic collaborator. His discussion will focus on experiential training during graduate school – internships and reaching out globally.

**Dr. Luis Schang** is a Professor at the Department of Biochemistry and is cross-appointed to the Department of Medical Microbiology and Immunology. He is also a member of the Li Ka Shing Institute of Virology and a founding member and president of ProPhysis, Inc. He is the director of the MD with Special Training in Research (MD-STIR) program. Dr. Schang is an active member of the International Society for Antiviral Research and the International Herpesvirus Workshop. He is an editor for PLOS ONE and Virology Journal, and a member of the Editorial Board of the Journal of Virology. He also reviews papers for a number of scientific publications. He is an ad hoc member of grant review panels of the CIHR and NIH. His research interests are centered in chemical virology, the use of small chemical probes to interrogate virus-infected cells to identify factors required for viral replication and to identify leads toward the development of new antiviral drugs. During the panel discussion, he will focus on career options inside and outside academia.



**Dr. Alan Underhill** is an Associate Professor in the Department of Oncology and the Mary Johnston Chair in Melanoma Research. He is the Director of the MD/PhD program in the Faculty of Medicine & Dentistry and represents the University of Alberta as a councilor for the Canadian Society for Clinical Investigation. Dr. Underhill also chairs the Cancer Sciences Graduate Coordinating Committee in the Department of Oncology. His research interests are in the area of genetic and epigenetic dysfunction in development and cancer, where he is also involved in intellectual property and translational cancer research. During the panel discussion he will focus on Career options for the Scientist and Clinician/Scientist.

---

**08:00 – 08:50**

**Workshop #3 – Leduc Room**

*Effective Recruitment Strategies for Paediatric Trials*

**Dr. Martin Offringa, Hospital for Sick Children**

Few child health professionals would argue against the need for more research in paediatrics; the question is how to do it better? Improving the quality of research in children relates to the entire research path: from study question, through design, recruitment, and conduct to reporting and implementation of research findings.

Developing appropriate and ethical strategies for recruitment, information, and consent are key elements of any research study but more challenging for those involving children. In a recent paper, the scientific literature on consent on the recruitment of children and families into clinical trials was reviewed at [http://www.huffingtonpost.ca/martin-offringa/drug-safety\\_b\\_5358502.html](http://www.huffingtonpost.ca/martin-offringa/drug-safety_b_5358502.html). Based on current evidence, this interactive workshop will highlight the do's and don'ts in approaching a family with a child that is eligible for inclusion in a trial. At session end, attendees will understand:

- Key study design and site selection considerations
- Role of a familiar environment (hospital or clinic where participants normally attend)
- How to support on site and off site activities
- How to be mindful of age specific issues

Dr. Martin Offringa is a practicing paediatrician and an epidemiologist. After graduation from medical school in 1986 he trained in epidemiology and clinical decision analysis at the Rotterdam Centre for Clinical Decision Analysis and at Tufts University, then completed his training in paediatrics and neonatology. He developed an interest in evidence-based practice and clinical drug research in 1995 while working as a neonatologist in the University of Amsterdam Academic Medical Center.

In 2002, Dr. Offringa was appointed Professor and Head of the Department of Paediatric Clinical Epidemiology at the University of Amsterdam. In 2007 he was appointed co-director of the Dutch National Paediatric Pharmacotherapy Expertise Network NKFK, and in 2008 director of the new Medicines for Children Research Network MCRN in the Netherlands. Both networks are funded by the Dutch Ministry of Health.

Since 2009, Dr Offringa has chaired the steering group of STaR Child Health, an international initiative that aims to enhance the design, conduct, and reporting of clinical trials in children. Most recently, he received a partner grant in the new European consortium Global Research in Paediatrics (GRIP), funded by 7th Framework Programme. GRIP aims to create consensus on international standards, methodologies and interoperability tools for paediatric research. Important gaps in current paediatric medicines research methods will be filled by developing, validation and harmonization of research tools specific for paediatrics.

Between 2006 and 2010 Dr. Offringa shared the editor in chief position of Evidence Based Child Health, the official journal of EPA/UNEPSA, with Dr. Terry Klassen from Canada. In 2012, Dr. Offringa was appointed as Senior Scientist and Head of the Child Health Evaluative Science Program at The Hospital for Sick Children. He also holds a clinical appointment in the Department in Neonatology at SickKids and is a Professor in the Department of Paediatrics at the University of Toronto.

# Oral Presentations #1

## Child Health - GI, Metabolism and Lung

Chairman Room | 09:00 - 10:30

No.	Name	Position	Supervisor	Abstract Title
1	<b>David Lim</b>	Resident	Justine M. Turner	Exogenous glucagon-like peptide-2 therapy promotes adaptation in a translational piglet model of neonatal short bowel syndrome.
2	<b>Wesam Bahitham</b>	PhD Student	Richard Lehner	Liver-specific expression of Es-x (Ces1g) reduces hepatic steatosis and improves dyslipidemia and glucose metabolism
3	<b>Jasmeena Gill</b>	Undergraduate Student	Andrea Haqq	Association between macronutrient intake and fasting levels of ghrelin in children with and without Prader-Willi Syndrome.
4	<b>Zaki Alshafi</b>	MSc Student	Silvia Pagliardini	Optogenetic excitation of preBötzingner Complex neurons potently drives inspiratory activity in vivo
5	<b>Megan O'Reilly</b>	Post Doctoral Fellow	Bernard Thebaud	Enhanced healing capacity of MRL/MPJ mice in response to hyperoxia-induced neonatal lung injury
6	<b>Prabhjot Bedi</b>	Other	Joanna MacLean	Long-term non-invasive ventilation in children in Alberta (2002-2014): clinical course and outcomes of the Edmonton cohort

*For full abstracts please visit our website at [www.wchri.org/researchday](http://www.wchri.org/researchday)*

## Oral Presentations #2

### Child Development - Neurocognitive and Mental Health

Chancellor Room | 09:00 - 10:30

No.	Name	Position	Supervisor	Abstract Title
7	<b>Sara Japoni</b>	PhD Student	David Eisenstat	DLX Transcriptional Regulation of Neural Progenitor Cell Fate in the Developing Forebrain
8	<b>Samantha Smyth</b>	Undergraduate Student	Khalid Aziz	The effect of delayed cord clamping on neurodevelopment in preterm and low weight infants
9	<b>Clara Lee</b>	PhD Student	Jacqueline Pei	Working memory in children born preterm Introduction Research showed that children born preterm have higher risk of working memory (WM) impairments. Ho
10	<b>Alanna Chomyn</b>	Undergraduate Student	Jennifer Toye	Evaluating the combined influence of socioeconomic position and preterm birth on child language development
11	<b>Lori Sacrey</b>	Post Doctoral Fellow	Lonnie Zwaigenbaum	Can Parents' Concerns Predict a Later Autism Spectrum Disorder Outcome:
12	<b>Megan Lukasewich</b>	MSc Student	Cindy Jardine	"We came out of our shells": Aboriginal youth's perspective on health changes occurring through participatory research approaches

*For full abstracts please visit our website at [www.wchri.org/researchday](http://www.wchri.org/researchday)*

## Oral Presentations #3

### Maternal - Global Health, Nutrition and Perinatal Immune System

Leduc Room | 09:00 - 10:30

No.	Name	Position	Supervisor	Abstract Title
13	<b>Yael Mansour</b>	Undergraduate Student	Stephane Bourque	Prenatal iron deficiency in the absence of maternal anemia causes fetal hypoxia
14	<b>Caroline Richard</b>	Post Doctoral Fellow	Catherine Field	Effect of feeding a docosahexaenoic acid rich diet on immune system development during the suckling period of the offspring
15	<b>Antoinette Nguyen</b>	PhD Student	Jerome Yager	Investigating the effects of Broccoli Sprouts on Inflammatory Cytokines and Oxidative Stress in a Neonatal Model of the Fetal Inflammatory Response
16	<b>Shokrollah Elahi</b>	Assistant Professor		Why are babies more susceptible to infections than the adults?
17	<b>Michael Bording-Jorgensen</b>	MSc Student	Eytan Wine	Enhanced Enteric Pathogen Killing by Inflammasome-Activated Macrophages
18	<b>Christen Klinger</b>	MSc Student	Joel Dacks	Characterization of membrane trafficking in the algae <i>Chromera velia</i> and <i>Vitrella brassicaformis</i> reveals a complex ancestor of apicomplexan parasites

*For full abstracts please visit our website at [www.wchri.org/researchday](http://www.wchri.org/researchday)*

# Oral Presentations #4

## Pediatric Subspecialty Residents

Turner Valley Room | 9:00 - 10:30

No.	Name	Position	Preceptor	Abstract Title
19	<b>Etienne Fortin-Pellerin</b>	Health/Clinical Fellow	Lisa Hornberger	Increased Diastolic Untwisting Velocity in Response to Tachycardia as Evidence of Diastolic Reserve in the Young Infant Heart
20	<b>Long Guo</b>	Resident	Ian Adatia	Hyperoxia reduces oxygen consumption in children with pulmonary hypertension.
21	<b>M. Florencia Ricci</b>	Health/Clinical Fellow	Charlene Robertson	Frequency and potentially modifiable predictors of Major Neuromotor Disability following complex cardiac surgery in early infancy
22	<b>Janeva Kircher</b>	Resident	Samina Ali	Caregiver Satisfaction with Children's Pain Management in the Emergency Department
23	<b>Catherine Corriveau-Bourque</b>	Subspecialty Resident	Aisha Bruce	The changing epidemiology of pediatric hemoglobinopathy patients in northern Alberta, Canada
24	<b>Christopher Ewing</b>	Subspecialty Resident	Piushkumar Mandhane	Electronic screen usage is associated with decreased sleep duration among children with sleep-disordered breathing

*For full abstracts please visit our website at [www.wchri.org/researchday](http://www.wchri.org/researchday)*



## Poster Presentations / Judging - Ballroom

Ballroom | 10:30 - 12:00

*For full abstracts please visit our website at [www.wchri.org/researchday](http://www.wchri.org/researchday)*

No.	Presenter	Supervisor	Abstract Title
<b>Child / Youth Health - Nutrition</b>			
49	Arnaldo Perez	Geoff Ball	Why do families initiate pediatric weight management? A multi-center, qualitative study of parents' reasons and facilitators
50	Hasnain Raza	Tarek El-Bialy	Effect of Low intensity pulsed ultrasound on orthodontically induced tooth root resorption
51	Abeer Alzaben	Diana Mager	Quality of life in children and adolescents with Celiac Disease on gluten free diet
52	Jillian Avis	Geoff Ball	Attrition and the Management of Pediatric Obesity: An Integrative Review
<b>Child / Youth Health - Congenital Abnormalities</b>			
53	Elise Watkins	Eric Parent	Predictors to identify adolescents with Idiopathic Scoliosis who will benefit from Schroth exercises within a randomized control trial
54	Harmanpreet Kaur	Tarek El-Bialy	Effect of Functional Appliance and Ultrasound on the mandibular growth.
55	Cassandra Janetzki-Flatt	Oana Caluseriu	Investigating the Genetic Cause of A Congenital Myasthenic- Like Syndrome
56	Sue Rene Soon	Hamdy El-Hakim	A systematic review of the evidence on spontaneous resolution of laryngomalacia and its symptoms
<b>Child / Youth Health - Infection, Inflammation &amp; Immunology</b>			
57	Carolina Araujo	Daniela Costa	Effects of fluid extract of mulberry (Morus Nigra) on antioxidant enzyme activity in
58	Sarah Aziz	Greg Tyrrell	Increased incidence of pertactin-deficient Bordetella pertussis infections in Alberta 2012-2013
59	Vivian Figueiredo	André Talvani	The affect of high fat diet in acute Trypanossoma Cruzi Infection
60	Iyla So	Catherine Field	Effect of feeding a mixed choline diet on immune development during suckling
61	Melissa Wood	Sarah Forgie	Using photography-based social media in microbiology and infectious diseases education
62	Han Zhang	Hamdy El-Hakim	Variables Associated with Repeat Ventilation Tube Insertion in Healthy Non-Syndromic Children
63	Joe Ou	Eytan Wine	Breaking the barrier: host-microbial interactions in pediatric inflammatory bowel diseases
64	Allen Fu	Eytan Wine	Characterizing pathobionts and their interaction with the intestinal epithelial lining: contributions to inflammatory bowel diseases
65	Deenaz Zaidi	Eytan Wine	Broken fences; epithelial gaps and microbes in inflammatory bowel disease.
66	Misagh Alipour	Eytan Wine	Mucus Attenuation in the Terminal Ileum of Children with Ulcerative Colitis Promotes Bacterial Interaction with the Mucosal Surface

# Poster Presentations / Judging - Continued

Ballroom | 10:30 - 12:00

No.	Name	Supervisor	Abstract Title
<b><i>Child / Youth Health - Mental Health &amp; Neurology</i></b>			
67	Tamara Germani	Lonnie Zwaigenbaum	Prevalence of Overweight and Obese Children and Adolescents with Autism Spectrum Disorder in Edmonton, Alberta
68	Chloe Luck	Rachel Wevrick	Hedonic Feeding in a mouse model of Prader-Willi Syndrome
69	Qaasim Mian	Georg M. Schmölder	Excessive tidal volumes administered through Positive Pressure Ventilation in preterm infants may cause brain injury
70	Supraja Rengan	Jennifer Toye	Influence of socioeconomic status on neurodevelopmental outcomes in very preterm infants, in the Canadian context
71	Rachel Skow	Craig Steinback	Sex differences in the neurovascular responses following exposure to low oxygen
72	Charlotte Usselman	Margie Davenport	Longitudinal cerebrovascular function during pregnancy: a case study
73	Jenny Yoon	Sujata Persad	Neuroprotective Effects of Sulforaphane on Hypoxic-Ischemic Neurons
74	Ann-Marie Przyszlupski	Jerome Yager	Hypoxic-ischemic neuroprotection by sulforaphane is concentration-dependent and not influenced by hypothermia
75	Brittany Lissinna	Jaynie Yang	Motor learning on a split-belt treadmill in children
76	Jennifer Gyoba	Francois Bolduc	A Drosophila melanogaster Fragile X syndrome model of sensory processing
77	Rebecca Long	Lawrence Richer	Autonomic responses in children with persistent post-concussion symptoms
78	Jamie Zagozewski	David Eisenstat	Dlx homeobox genes and epigenetic regulation of retinal cell fate
79	Deena Hamza	Peter Silverstone	The importance of early screening in primary care to identify substance use in youth, and the most versatile and brief tool available to date
80	Tristan Robinson	Rebecca Gokiert	Supporting Early Child Development through the Co-Creation of Knowledge in a CBR Partnership
81	Alaura Androschuk	Francois Bolduc	Energetic requirement of memory formation
<b><i>Child / Youth Transplant</i></b>			
82	Mohamed Elborae	Khalid Aziz	Umbilical lines are an independent risk factor for adverse outcomes in very preterm babies
<b><i>Maternal Health - Fetal Origins of Disease</i></b>			
83	Christy-Lynn Cooke		Fetal growth restriction and increased susceptibility to cardiovascular disease in offspring born from dams of advanced maternal age
84	Taher Al Jishi	Consolato Sergi	Factor V Leiden mutation in women with early recurrent pregnancy loss: a meta-analysis and systematic review of the causal association
85	Sarah Bridgman	Anita Kozyrskyj	Association between early life fecal immune and metabolic biomarkers and overweight status at 3 years of age: study overview
86	Vanessa Marensi	Elaine Leslie	Characterizing the post translational modification of placental glutathione S-Transferase

## Poster Presentations / Judging - Continued

Ballroom | 10:30 - 12:00

No.	Presenter	Supervisor	Abstract Title
<b>Maternal Health - Infection, Inflammation &amp; Immunology</b>			
87	Juliana Monteiro	Solina Richter	Early Breastfeeding in a Brazilian Baby Friendly Hospital according to the health professionals' concept
88	Ginger Sullivan	Beverley O'Brien	Support for Women Experiencing Obstetrical Fistula in Northern Ghana
89	Jasmin Bal	Richard Fedorak	C-Reactive Protein is elevated with clinical disease activity during pregnancy in women with Inflammatory Bowel Disease
90	Nanlin Yin	David Olson	A novel in vitro model for understanding the regulation of uterine chemotactic factor for labour initiation
<b>Maternal Health - Mental Health</b>			
91	Ariane Thaise Frello Roque	Gerri Lasiuk	The experience of high risk puerperium women: vital power influence
92	Mais Aljunaidy	Sandra Davidge	Mechanisms of Vascular Dysfunction in a Rat Model of Preeclampsia and Fetal Growth Restriction.
<b>Maternal Health - Nutrition</b>			
93	Shieva Auch	Gerri Lasiuk	Associations among lifetime interpersonal violence and selected perinatal outcomes: preliminary findings from the TIPS
94	Devishree Krishnan	Todd Alexander	Effect of sodium ingestion on urinary calcium excretion
95	Nicholas Kuzik	Valerie Carson	Physical activity and sedentary behaviour of toddlers and preschoolers in child care centres in Alberta, Canada
96	Lesley Brennan	Stephane Bourque	Relationship between maternal iron level and birth outcome in Alberta women: An APRON cohort analysis
<b>Maternal Health - Preeclampsia</b>			
97	Sydney Schmidt	Margie Davenport	Exercise During Pregnancy: Current recommendations by Canadian maternity health care providers.
98	Kelycia Leimert	David Olson	PGF2 $\alpha$ promotes uterine transformation through positive feedback interactions and synergy with IL-1 $\beta$ in human myometrium smooth muscle cells (HMSMC)
99	Rose Sun	Sandra T. Davidge	Mechanism of resveratrol action on improving cardiovascular function in growth restricted offspring on a high-fat diet
<b>Systematic Review and Knowledge Translation</b>			
100	Priatharsini (Tharsini) Sivananthajothy	Jane Springett	Understanding Perceptions of Community Engagement held by Stakeholders within the Family Care Clinic Planning Process
101	Osnat Wine	Alvaro Osornio-Vargas	DoMiNO Project: Data mining and newborn outcomes Exploring environmental variables and health outcomes using an integrated KT approach
102	Irena Buka	Alvaro Osornio-Vargas	Children summer exposure to environmental tobacco smoke. Results from the first phase of a larger seasonal exposure study.
103	Katelynn Crick	Lisa Hartling	A Descriptive and Comparative Analysis of Child-Relevant Systematic Reviews in the Cochrane Database of Systematic Reviews
104	Maryam Elyasi	Maryam Amin	Impact of Sense of Coherence on Oral Health-Related Behaviors: A systematic review

## Poster Presentations / Judging - Continued

Ballroom | 10:30 - 12:00

No.	Name	Supervisor	Abstract Title
<b>Women's Health - Oncology</b>			
105	Abul Kalam Azad	YangXin Fu	RUNX3 plays an oncogenic role in ovarian granulosa cell tumor (GCT) cells
106	Preethi Krishnan	Sambasivarao Damaraju	Identification of microRNAs as Prognostic Markers for Breast Cancer
107	Mahalakshmi Kumaran	Sambasivarao Damaraju	Germline Copy Number Variations As Genetic Susceptibility Determinants In Sporadic Breast Cancer
108	Ray Amith	Larry Fliegel	Deletion of the Na <sup>+</sup> /H <sup>+</sup> exchanger NHE1 results in decreased invasiveness of MDA-MB-231 breast cancer cells
109	Matthew Benesch	David Brindley	Autotaxin Inhibition Suppresses Inflammatory Cytokine Production in Mammary Adipose Tissue and Delays Breast Tumor Growth and Metastasis in Mice
110	Shyambabu Chaurasiya	Mary Hitt	Examining the therapeutic potential of mutant vaccinia viruses for Breast Cancer Therapy
111	Powel Crosley	Mary Hitt	Effective treatments for granulosa cell tumour: The potential of small molecule drugs
<b>Women's Mental Health</b>			
112	Saima Hirani	Gerri Lasiuk	Gender and the study of resilience: A critical review
113	Elaine Hyshka	T. Cameron Wild	The Royal Alexandra Hospital's Addiction Recovery and Community Health team: Addressing health inequities faced by women in Edmonton's inner city
114	Katherine Wyper	Jacqueline Pei	The use of alternative therapies at the 2nd Floor Women's Recovery Centre
<b>Women's Health - Nutrition</b>			
115	Sarah Elliott	Rhonda Bell	Postpartum Calorimetry (PCAL) Study: Baseline Anthropometric and Body Composition Data
116	Leticia C. R. Pereira	Linda J. McCargar	Estimated energy costs of exclusive breastfeeding: preliminary data from the Postpartum Calorimetry study
117	Sarah Lee	Noreen Willows	A qualitative investigation of the experience of food insecurity among students with children who use the Campus Food Bank

For full abstracts please visit our website at [www.wchri.org/researchday](http://www.wchri.org/researchday)

## LUNCH - Ballroom

12:00 - 12:30 **Afternoon Poster Set-up**

12:00 - 12:45 **Buffet Lunch**

---

**12:45**

**Welcome to Dr. Martin Offringa, Keynote Speaker - Ballroom  
by Dr. Lawrence Richer, Associate Director, WCHRI**

---

**12:45 - 13:30**

### **KEYNOTE PRESENTATION**

*Medicines for Children - How to Make it Work*

**Dr. Martin Offringa**



We are delighted to have Dr. Martin Offringa as our keynote speaker at Research Day this year. Dr. Offringa is a neonatologist focused on enhancing the quality and quantity of clinical research in child health to improve health outcomes, particularly with respect to medicines in children that have not been properly studied. See Dr. Offringa's full biography under Workshop #3.

#### **Research Tools to Facilitate Interoperability in Paediatric Research**

Multicentre collaborative research is necessary to expedite the study of treatments for paediatric disorders, expand the paediatric medicines evidence base, and quickly bring new beneficial interventions for patients to the bedside.

The lack of standardization across the field of paediatric clinical (drug) research is an ever-increasing obstacle to the development and safe use of medicine in children. To combat this hurdle, a series of activities that facilitate inter-operability, has been identified. These activities, all aimed to improve the quality of design, conduct, and reporting of paediatric clinical research, include developing guidance for the selection and measurement of valid, responsive and feasible health outcomes in paediatric clinical trials; recommendations for an adequate sample size definition when prior paediatric information is lacking; guidance for selecting an appropriate comparator in comparative effectiveness research; a tool to reduce the risk of bias in paediatric trials; a tool for data and safety monitoring committees in paediatric randomized clinical trials; avenues for the improvement of consistency and quality in the ethical review of paediatric clinical research; guidance for involvement of parents and patients in the trial design process. This keynote will offer an overview of these activities and examine the extent to which they can actually facilitate inter-operability in paediatric clinical research.

The Keynote will help attendees to better understand:

- Improving the quality of design, conduct, and reporting of paediatric clinical research by developing and promoting the use of modern research standards
- Harmonizing terminology and data standards for drug and vaccine research and medicinal use
- Identifying, developing and harmonizing outcome assessment, endpoints, and biomarkers to evaluate paediatric drug and vaccine responses
- Developing systems that will foster harmonization of acquisition of clinical data for clinical trials
- Standardizing information given to patients and parents in the recruitment process of clinical trials



## Oral Presentations #5

### Women's Health - Pregnancy Research

Chairman Room | 13:45 - 15:15

No.	Name	Position	Supervisor	Abstract Title
25	<b>Beate Sydora</b>	Research Associate/ Assistant	Sue Ross	Outcomes of an Interdisciplinary Menopause Clinic at the Lois Hole Hospital
26	<b>Rhonda Rosychuk</b>	Professor		Sex Differences in Outcomes After Discharge from the Emergency Department for Atrial Fibrillation/Flutter in Alberta
27	<b>Maira Quintanilha</b>	PhD Student	Rhonda Bell	Coping with contrasts between "back home" and "here": African-immigrant women's pregnancy and postpartum experiences
28	<b>Vivian Huang</b>	Health/Clinical Fellow	Richard Fedorak	Fecal calprotectin is elevated with clinical disease activity during pregnancy in women with inflammatory bowel disease
29	<b>Charlotte Usselman</b>	Post Doctoral Fellow	Craig Steinback	Sympathetic baroreflex sensitivity in normotensive pregnant women
30	<b>Barbara Verstraeten</b>	PhD Student	David Olson	IL-1B and PGF2a stimulate IL-1 Receptor (R)1 and 2 and Accessory Proteins (AcP) as well as IL-6R in human myometrial smooth muscle cells (HMSMC).

*For full abstracts please visit our website at [www.wchri.org/researchday](http://www.wchri.org/researchday)*

## Oral Presentations #6

### Women and Children - Oncology

Chancellor Room | 13:45 - 15:15

No.	Name	Position	Supervisor	Abstract Title
31	Luxin Sun	PhD Student	Mark Glover	Development of Phosphomimetic Inhibitors of the BRCA1 C-terminal Domain for Cancer Therapy
32	Ganesh Venkatraman	PhD Student	David Brindley	Inhibition of Autotaxin/LPA signaling sensitizes breast cancer to chemotherapy
33	Yue Yuen	Undergraduate Student	Lesley Mitchell	Polymorphisms in the genes coding for coagulation factor V and factor II are risk factors for deep vein thrombosis in pediatric cancer patients
34	Kirby Ziegler	MSc Student	D. Alan Underhill	Defining PAX3 target gene networks and their dysregulation in birth defects and pediatric cancer
35	Mohamed ELdeeb	PhD Student	Richard Fahlman	The anti-apoptotic form of tyrosine kinase Lyn that is generated by proteolysis is degraded by the N-end rule pathway in Chronic myelogenous leukemia
36	Raheem Suleman	Undergraduate Student	Sunita Vohra	Prevalence of pain, nausea/vomiting, and anxiety among pediatric oncology inpatients

*For full abstracts please visit our website at [www.wchri.org/researchday](http://www.wchri.org/researchday)*

# Oral Presentations #7

## Child Health - Congenital Abnormalities and Transplant

Leduc Room | 13:45 – 15:15

No.	Name	Position	Supervisor	Abstract Title
37	Yusuke Echigoya	Post Doctoral Fellow	Toshifumi Yokota	Exons 45-55 skipping of the human dystrophin gene in vitro with antisense oligonucleotide cocktails
38	Cadence Moorhouse	Undergraduate Student	Oana Caluseriu	Molecular characterization of al-awadi/raas-rothschild/schinzel/fuhrmann-like syndrome
39	Maryam Hejazi	MSc Student	David Eisenstat	Genetic regulation of photoreceptor cell differentiation in developing retina
40	Katrina Labonte	Undergraduate Student	Lori West	Investigation of A-Antigen Specific Tolerance Following ABO-Incompatible Heart Transplantation Using a Novel Blood Group A Transgenic Mouse Model
41	Shine Hariharan	Post Doctoral Fellow	Ian Adata	Cardiovascular associations and complications in pediatric patients listed for liver transplantation
42	Awrad Nasralla	MSc Student	Gina Rayat	Using Manganese Porphyrin to Improve Neonatal Pig Islet Function in Diabetic Mice

*For full abstracts please visit our website at [www.wchri.org/researchday](http://www.wchri.org/researchday)*

# Oral Presentations #8

## Pediatric Residents

Turner Valley Room | 13:45 – 15:15

No.	Name	Position	Preceptor	Abstract Title
43	<b>Chantelle Champagne</b>	Resident	Dawna Gilchrist	Ought we to mend their broken hearts? The history of cardiac repairs in children with Down syndrome
44	<b>Gordana Djordjevic</b>	Resident	Joan Robinson	Can one prescribe carbapenems to patients with IgE-mediated allergy to penicillins or cephalosporins?
45	<b>Alex Jackman</b>	Resident	Sunita Vohra	Perceptions of complementary and alternative medicine among undergraduate healthcare professional trainees in a Canadian university
46	<b>Abbeir Hussein</b>	Resident	Sarah Curtis	Acute Physical Injury and Subsequent Stress Symptoms
47	<b>Elizabeth DeBruyne</b>	Resident	Samina Ali	Emergency medical services provider comfort with pre-hospital analgesia administration to children
48	<b>Hannah Weinstangel</b>	Resident	Irena Buka	Environmental pediatrics: An introduction and an evidence-based online resource

*For full abstracts please visit our website at [www.wchri.org/researchday](http://www.wchri.org/researchday)*

# Poster Presentations / Judging / Reception

Ballroom | 15:15 - 16:45

*For full abstracts please visit our website at [www.wchri.org/researchday](http://www.wchri.org/researchday)*

No.	Name	Supervisor	Abstract Title
<b>Child/Youth Health - Cardiology</b>			
118	Ernst Hoppenbrouwers	Nee Khoo	Functional echocardiography as non-invasive method to detect cardiac allograft vasculopathy in children post cardiac transplantation
119	Mohamed Elgendi	Ian Adatia	The voice of the heart: the heart sound signature of children with pulmonary artery hypertension
120	Lindsay Mills	Nee Khoo	Premature Infants have Increased Left Ventricular Twist from Enhanced Apical Rotation and Deformation
121	Tarek Kaddoura	Ian Adatia	Automated measurement of electro-mechanical activation time differentiates pulmonary hypertensive patients with and without right ventricular failure
122	Santokh Dhillon	Lisa K Hornberger	Myocardial Mechanics Of The Systemic Right Ventricle In Hypoplastic Left Heart Syndrome Through The Perinatal Transition
123	Rebecca Peat	Gary Lopaschuk	Role of Protein Succinylation in the Regulation of Energy Metablism in the Newborn Heart.
124	Amin Shah	Sandra Davidge	Effect of Resveratrol on cardiovascular and metabolic function in intrauterine growth restricted male and female rates on a high-fat diet
<b>Child / Youth Health</b>			
125	Vanessa Lam	Michael van Manen	Retrospective Review of Death in the NICU
126	Laura Reyes	Sandra Davidge	The effect of aerobic exercise training in the femoral arteries from intrauterine growth restricted offspring.
<b>Child / Youth Health - Breathing</b>			
127	Nikytha Antony	Joanna MacLean	Effects of preterm birth and bronchopulmonary dysplasia on asthma presentation in middle childhood.
128	Megan Fowler	Dawn Hartfield	Spontaneous Pneumothorax in Children: Examining the Epidemiology and Etiology
129	Ann L. Revill	Gregory D. Funk	Muscarinic modulation of persistent inward currents in motoneurons that control airway patency
130	Andre Isaac	Hamdy El-Hakim	The Correlation Between Acoustic Rhinometry, Subjective Symptoms and Endoscopic Findings in Symptomatic Children with Nasal Obstruction
131	Allison Carroll	Piush Mandhane	3D modeled custom-made non-invasive positive pressure mask in an infant
132	Maria Castro Codesal	Joanna MacLean	Long- term Noninvasive Ventilation in Children in Alberta (2002-2014): Trends of the Home Ventilation Program in Edmonton



## Poster Presentations / Judging / Reception - Contd

Ballroom | 15:15 - 16:45

No.	Name	Supervisor	Abstract Title
<b><i>Child / Youth Health - Congenital Abnormalities</i></b>			
133	Beatriz Carvalho Henriques	Katherine Aitchison	CYP2D6: Detecting New Structures for Clinical Practice
134	Suzan Shenouda	Consolato Sergi	Combined Morphometric and Immunohistochemical Algorithm for Identification of Ganglion cells
135	Quang Vo	Edmond Lou	In-vivo measurements of axial vertebral rotation using a 3D spinal image: A pilot study
136	Lina Becerra	Kim Adams	Using robots to assess skills and access play and problem solving for children with severe disabilities
137	Mark Assmus	Peter Metcalfe	Postnatal Surveillance of Pediatric Hydronephrosis due to Utero-Pelvic Junction Obstruction
138	Bo Bao	Toshifumi Yokota	Optimizing Exon 51 Skipping as a Treatment of Duchenne Muscular Dystrophy
139	Jose Luis Cabeza Gonzalez	Alvaro Osornio Vargas	The interactions of economic, legal and political factors on environment and their potential child health effects
140	Anthony Chiu	Joseph Casey	Identifying Chemical Correctors for the Folding Defect in Corneal Dystrophy-Causing Mutants of SLC4a11
141	Michelle Young	Edmond Lou	The Use of Ultrasound for Guided Pedicle Screw Insertion: A Preliminary Investigation
142	Renee Leduc	Heather McDermid	Identification and analysis of genetic variants contributing to anencephaly.
143	Alexandria Tiffinger	Andrew Waskiewicz	Role of bmpr1ab in ocular developmental disease
144	Sonya Widen	Andrew Waskiewicz	The role of BMP3 in eye development and pediatric ocular disease
145	Sukhpreet Tamana	Carmen Rasmussen	Neuropsychological Functioning in Children and Adolescents with FASD and Comorbid Seizure Disorder
146	Punit Virk	Oana Caluseriu	Antisense-mediated gene therapy in cells from patients with Fibrodysplasia Ossificans Progressiva
<b><i>Child / Youth Health - Mental Health &amp; Neurology</i></b>			
147	Conrad Tsang	Amanda Newton	Predicting return emergency department visits and hospital admissions for deliberate self-harm in children and adolescents: a cohort study
148	Marghalara Rashid	Amanda Newton	The Impact of Pediatric Traumatic Brain Injury (TBI) on Family Functioning: A Systematic Review
149	Rohit Lodhi	Katherine Aitchison	Antipsychotic associated metabolic syndrome: clinical course and vulnerability factors
150	Vanessa Carias	Rachel Wevrick	The role of MAGEL2, a protein implicated in Prader-Willi syndrome, in the regulation of various RING-zinc finger-type E3 ubiquitin ligases

# Poster Presentations / Judging / Reception - Contd

Ballroom | 15:15 - 16:45

No.	Name	Supervisor	Abstract Title
151	Ain Kamaludin	Rachel Wevrick	Investigating autophagy in a mouse model of Prader-Willi Syndrome
152	Preeti Kar	Jerome Yager	A study of biomarkers for oxidative stress and metabolism following broccoli sprout ingestion
153	Basma Al Jabri	Helly Goez	Case report of Infantile Neuronal Ceroid Lipofuscinoses: a novel mutation in CLN1/PPT1
154	FangChao Ding	Lonnie Zwaigenbaum	Predicting Autism Spectrum Disorder using 12 and 18 months behavioural data: novel risk classification using decision tree models
155	David Rossolatos	Katherine Aitchison	COMT genotype predicts age of diagnosis in substance-induced psychosis
156	Leslie Roper	Katherine Aitchison	Stressful prenatal and childhood events and adolescent mental health
<b>Child / Youth Health - Oncology</b>			
157	Geetha Venkateswaran	Sujata Persad	Role of $\beta$ -catenin/Active $\beta$ -catenin in Osteosarcoma progression
158	Sabina Baghirova	Richard Schulz	Determining the nuclear localization and targets of nuclear matrix metalloproteinase-2 in ischemia-reperfusion injury
159	Brandon Chan	Richard Schulz	Doxorubicin-induced oxidative stress activates intracellular matrix metalloproteinase-2 in human fibrosarcoma cells
160	Brodie Heywood	Katherine Aitchison	ABCB1: From target validation to clinical utility
161	Xiaoyun Tang	David Brindley	Expression of lipid phosphate phosphatase-1 in cancer cells attenuates lysophosphatidatesignaling,tumor growth and metastasis in mice
162	Allison Norris	Shannon Scott	Developing a knowledge translation tool with families about pediatric chronic pain: a study protocol
<b>Maternal Health - Mental Health</b>			
163	Qendresa Beka	Padma Kaul	Impact of diabetes during pregnancy on maternal mental health
<b>Systematic Review and Knowledge Translation</b>			
164	Katherine Bannar-Martin	Shannon Scott	A protocol for a systematic review of the use of process evaluations in knowledge translation research
165	Colin Andrews	Silvia Pagliardini	Abdominal recruitment and expiratory activity In REM sleep
166	Rachel Flynn	Shannon Scott	A theory based evaluation of Lean process improvement in pediatric healthcare- research proposal
167	Michelle Foisy	Lisa Hartling	Overviews of reviews: A new publication type and an emerging method of knowledge synthesis
168	Aimee Gonzalez de Armas	Shannon Scott	Engaging consumers to evaluate knowledge translation approaches in a Pan-Canadian child health study
169	Humam Saltaji	Carlos Flores-Mir	Assessing Methodological Quality of Clinical Trials Included in Orthodontic and Pediatric Dental Systematic Reviews

## Poster Presentations / Judging / Reception - Contd

Ballroom | 15:15 - 16:45

No.	Name	Supervisor	Abstract Title
170	Carissa Samoluk	Jill Konkin	Contraception use and delivery on campus
171	Shannon Scott		Information needs and preferences of parents seeking care for their children in general emergency departments in Canada
172	Lauren Albrecht	Shannon D. Scott	Knowledge translation tools for parents with children with croup and gastroenteritis
<b>Women's Health - Oncology</b>			
173	Samir H Barghout	YangXin Fu	RUNX3 and Wnt signaling pathway contribute to carboplatin resistance of epithelial ovarian cancer cells
174	Juliana Valencia Serna	Hasan Uludag	Cell and Tumor Growth arrest of Chronic Myeloid Leukemia Cells by siRNA delivery with Lipid-modified Polymers carriers
175	Manoj Parmar	Hasan Uludag	Targeting cell cycle proteins in breast cancer cells by siRNA using lipid-substituted polyethylenimine
176	Hoda Soleymani Abyaneh	Afsaneh Lavasanifar	Towards development of polymeric micellar nano-carriers for tumor targeted drug delivery: The effect of core forming block on micellar stability and s
177	Deniz Meneksedag	Hasan Uludag	Probing the Effect of Endogenous Molecules on siRNA-PEI Polyplexes
178	Habib Al Yousef	Roger Leng	Influences of ubiquitin ligases on p53 regulation post-irradiation in ATM-proficient and ATM-deficient cells
179	Ghazal Danesh	Manijeh Pasdar	Comprehensive characterization of cell-cell adhesion proteins in ovarian cancer
180	Jasdeep Mann	Ing Swie Goping	Proliferative function of Bad in breast cancer.
181	Ning Yang	Ing Swie Goping	Characterization of cell death induced by the cyanine dye D112: a potentially selective anti-cancer compound
<b>Women's Health - Uro/gynecological</b>			
182	Amanda Cao	Denise Hemmings	Regulation of blood brain barrier permeability in posterior cerebral arteries by sphingosine 1-phosphate
183	Harneet Chahal	Zubia Mumtaz	Abortion-seeking behavior among rural women in Chakwal, Pakistan
184	Michelle Chan	Andrea Neilson	Short and Medium Terms Effects of Dilation and Curettage/ Evacuation of uterus for Termination of Pregnancy
185	Tasneem Siyam	Nese Yuksel	Assessment of quality of life and breast cancer risk after HT administration in women who underwent BPSO
<b>Women's Health - Mental Health</b>			
186	Rongfang Hu	Kathleen M Hegadoren	Gender differences in sleep quality and memory among ICU patients
187	Vikas Chadha	Sue Ross	Literature Review: Menopausal Symptoms and Experiences among Aboriginal Women around the World
188	Jennifer Croden	Sue Ross	The availability of natural health products for menopausal symptoms in Canadian pharmacy chains and their regulation by Health Canada

## Poster Presentations / Judging / Reception - Contd

Ballroom | 15:15 - 16:45

No.	Name	Supervisor	Abstract Title
189	Nicole Veltri	Sue Ross	Health and demographics of women attending a specialized menopause clinic and treatment options provided: a chart review
190	Sangho Choi	Beate Sydora	Experience of Menopause in Women with Inflammatory Bowel Diseases: Lessons from Analysis of Patient Recruitment and Data Collection
191	Nadia du Toit	Nese Yuksel	The safety and endometrial protection of levonorgestrel IUS in women on estrogen therapy.

*For full abstracts please visit our website at [www.wchri.org/researchday](http://www.wchri.org/researchday)*

## Awards & Wrap-Up - Ballroom

16:45 - 17:30

*The Women and Children's Health Research Institute greatly appreciates the contributions of our members, trainees, reviewers, contributors, committee members and staff in making WCHRI's vision to improve the health of women and children a reality.*

*We would also like to thank the Stollery Children's Hospital Foundation, the Royal Alexandra Hospital Foundation, Alberta Health Services, the University of Alberta and the Faculty of Medicine & Dentistry for their continued support. If not for the contributions of these partners, the work we do would not be possible.*

[www.WCHRI.org](http://www.WCHRI.org)



women & children's  
health research institute

University of Alberta  
4-081 Edmonton Clinic Health Academy (ECHA)  
11405 - 87 Avenue, Edmonton, AB T6G 1C9  
780.248.5602 · [WCHRI@ualberta.ca](mailto:WCHRI@ualberta.ca)

