

Unequal Recombination and Evolution of the Mating-Type (*MAT*) Loci in the Pathogenic Fungus *Grosmannia clavigera* and Relatives

Clement K.-M. Tsui,^{*1} Scott DiGuistini,[†] Ye Wang,[†] Nicolas Feau,^{*} Braham Dhillon,^{*} Jörg Bohlmann,^{*,‡} and Richard C. Hamelin^{*,§}

^{*}Department of Forest and Conservation Sciences, [†]Department of Wood Science, and [‡]Michael Smith Laboratory, The University of British Columbia, Vancouver, BC, Canada V6T 1Z4, and [§]Natural Resources Canada, Laurentian Forestry Centre, Québec, QC, Canada G1V 4C7

ABSTRACT Sexual reproduction in fungi is regulated by the mating-type (*MAT*) locus where recombination is suppressed. We investigated the evolution of *MAT* loci in eight fungal species belonging to *Grosmannia* and *Ophiostoma* (Sordariomycetes, Ascomycota) that include conifer pathogens and beetle symbionts. The *MAT1-2* idiomorph/allele was identified from the assembled and annotated *Grosmannia clavigera* genome, and the *MAT* locus is flanked by genes coding for cytoskeleton protein (*SLA*) and DNA lyase. The synteny of these genes is conserved and consistent with other members in Ascomycota. Using sequences from *SLA* and flanking regions, we characterized the *MAT1-1* idiomorph from other isolates of *G. clavigera* and performed dotplot analysis between the two idiomorphs. Unexpectedly, the *MAT1-2* idiomorph contains a truncated *MAT1-1-1* gene upstream of the *MAT1-2-1* gene that bears the high-mobility-group domain. The nucleotide and amino acid sequence of the truncated *MAT1-1-1* gene is similar to its homologous copy in the *MAT1-1* idiomorph in the opposite mating-type isolate, except that positive selection is acting on the truncated gene and the alpha(α)-box that encodes the transcription factor has been deleted. The *MAT* idiomorphs sharing identical gene organization were present in seven additional species in the Ophiostomatales, suggesting that the presence of truncated *MAT1-1-1* gene is a general pattern in this order. We propose that an ancient unequal recombination event resulted in the ancestral *MAT1-1-1* gene integrated into the *MAT1-2* idiomorph and surviving as the truncated *MAT1-1-1* genes. The α -box domain of *MAT1-1-1* gene, located at the same *MAT* locus adjacent to the *MAT1-2-1* gene, could have been removed by deletion after recombination due to mating signal interference. Our data confirmed a 1:1 *MAT*/sex ratio in two pathogen populations, and showed that all members of the Ophiostomatales studied here including those that were previously deemed asexual have the potential to reproduce sexually. This ability can potentially increase genetic variability and can enhance fitness in new, ecological niches.

KEYWORDS

heterothallism
homothallism
mating system
evolution
outcrossing
selfing

Copyright © 2013 Tsui et al.

doi: 10.1534/g3.112.004986

Manuscript received November 14, 2012; accepted for publication January 2, 2012

This is an open-access article distributed under the terms of the Creative Commons Attribution Unported License (<http://creativecommons.org/licenses/by/3.0/>), which permits unrestricted use, distribution, and reproduction in any medium, provided the original work is properly cited.

Supporting information is available online at <http://www.g3journal.org/lookup/suppl/doi:10.1534/g3.112.004986/-/DC1>

Sequence data from this article have been deposited with the EMBL/GenBank Data Libraries under accession nos. JX402930–JX402996.

[†]Corresponding author: 2424 Main Mall, Department of Forest and Conservation Sciences, The University of British Columbia, Vancouver, BC, Canada V6T 1Z4.

E-mail: clementsui@gmail.com

Sexual reproduction in fungi is controlled by the mating-type (*MAT*) loci, in which the genes determine mating incompatibility and regulate key mating processes (Coppin *et al.* 1997; Debuchy *et al.* 2010). Most haploid ascomycete fungi have a single *MAT* locus termed *MAT1*, which has two alleles called *MAT1-1* and *MAT1-2* (Turgeon and Yoder 2000). Like large portions of the human X and Y chromosomes, the DNA and amino acid sequences of *MAT1-1* and *MAT1-2* are no more similar than expected by chance; thus, they have been termed idiomorphs (Metzenberg and Glass 1990). The idiomorphs encode transcription factors with conserved DNA binding domains involved in the regulation of mating identity and sexual development (Coppin *et al.* 1997). The two idiomorphs are distinguished by the presence of either an alpha(α)-box domain in *MAT1-1* or a high-mobility-group

(HMG) domain in *MAT1-2* (Coppin *et al.* 1997). Heterothallic (outcrossing) ascomycete fungi carry either one of the two idiomorphs at the *MAT* locus, and two isolates bearing complementary *MAT1* idiomorphs are required to mate. In contrast, homothallic ascomycetes can undergo haploid selfing (completion of the sexual cycle with a clone-mate) because *MAT* genes with α -box and HMG domains are both present in the mating partners (Debuchy *et al.* 2010; Billiard *et al.* 2011). This gene arrangement may have evolved under selection for universal compatibility (Billiard *et al.* 2011, 2012). The *MAT1-1* idiomorph usually comprises a gene, *MAT1-1-1*, whereas the *MAT1-2* idiomorph has a different gene, *MAT1-2-1*. However, additional genes such as *MAT1-1-2* and *MAT1-1-3* have been reported in the *MAT1-1* idiomorphs in various sordariomycetous ascomycetes (Turgeon and Yoder 2000; Debuchy *et al.* 2010). The questions of which mode of sexual reproduction, heterothallism or homothallism, is ancestral and which genetic/evolutionary mechanism mediates the change from one to the other have received much attention from fungal biologists (Debuchy *et al.* 2010). Therefore, understanding the *MAT* locus organization can provide insight into the genetics and evolution of mating systems and life history in ascomycetes.

The fungi in Ophiostomatales (Sordariomycetes, Ascomycota) are diverse, with more than 100 species, including many important or aggressive tree pathogens responsible for wilt diseases, blue stain in commercial timber; in addition, they play an important role as insect symbionts and associates, as well as saprophytes (Zipfel *et al.* 2006). Most species belong to sexual genera *Grosmannia*, *Ophiostoma*, and the asexual genus *Leptographium*. In North America, *Grosmannia clavigera* is an important conifer pathogen that has a symbiotic relationship with its vector the mountain pine beetle (*Dendroctonus ponderosae*). *Grosmannia clavigera* and other fungal pathogens and symbionts, such as *Leptographium longiclavatum* and *Ophiostoma montium*, are carried in the mycangia and on the exoskeleton of mountain pine beetles because these fungi produce abundant slimy spores that attach themselves to the insect's body. These fungi can grow into the sapwood and damage the host tree's water transport system (Yamaoka *et al.* 1995; Solheim and Krokene 1998). The mountain pine beetles and its fungal symbionts have destroyed more than 17.5 million ha of lodgepole pine forests in western Canada in the last decade (http://www.for.gov.bc.ca/hfp/mountain_pine_beetle/facts.htm), and the magnitude of devastation is the largest in recorded history in Canada (Kurz *et al.* 2008; Safranyik *et al.* 2010).

G. clavigera is very aggressive and it may be capable of detoxifying terpenoids that are an important class of defense compounds in pines (DiGuistini *et al.* 2011). Because *G. clavigera* plays an important role in the pine-beetle-fungus dynamics and epidemics, it is essential to understand its biology, genetics, and population structure. Populations of *G. clavigera* are polymorphic and form distinct genetic clusters yet with some gene flow and admixture among clusters (Lee *et al.* 2007; Tsui *et al.* 2012). Evidence of random mating and linkage equilibrium were also revealed, indicating sexual reproduction occurred in *G. clavigera* populations (Tsui *et al.* 2012). However, the sexual fruiting bodies of *G. clavigera* are rarely observed (Lee *et al.* 2005), even though *G. clavigera* is reported to have a life cycle comprising both the asexual and sexual stages. It is important to understand the ability of a fungal pathogen to perform sexual reproduction because such information could provide clues to the population biology of these fungi, which could be useful to further our understanding of the recent unprecedented epidemic.

Grosmannia clavigera lineage *Gs sensu* (Alamouti *et al.* 2011) is heterothallic because a gene homologous to *MAT1-2-1* is characterized at the *MAT* locus in the isolate for which the genome was

sequenced but no gene coding for the α -box domain was reported (DiGuistini *et al.* 2011). Although fungi in Ophiostomatales are diverse in breeding strategies with worldwide distribution, the *MAT* locus has been characterized in only a limited number of species, such as *Ophiostoma ulmi*, *O. novo-ulmi*, and *O. himal-ulmi*, which are responsible for the Dutch elm disease epidemic in Europe and North America (Paoletti *et al.* 2005a; Jacobi *et al.* 2010). The genes corresponding to opposite mating-types recently were reported in the *MAT* locus of *Ophiostoma quercus*, which causes significant sapstain in hardwood (Wilken *et al.* 2012). Because the *MAT1-1* idiomorph has not been characterized in *G. clavigera* and the *MAT* locus organization has not been well investigated in other fungi of Ophiostomatales, we used genomics and primer walking approaches to study the organization and evolution of the *MAT* locus in *G. clavigera* and eight related fungi. To address the question of whether heterothallism or homothallism is a derived character state, we also compared the *MAT* locus organization with other ascomycete species in the Sordariomycetes. The aim of the present investigation was (1) to characterize the mating-type locus organization of *G. clavigera* bearing a *MAT1-1* idiomorph; (2) to investigate the evolution of *MAT* genes and mating systems in fungi belonging to Ophiostomatales with respect to other ascomycetes; and (3) to determine the mating-type ratio in the populations of *G. clavigera*.

MATERIALS AND METHODS

Fungal materials and culture collection

Thirty-four fungal isolates belonging to nine species of Ophiostomatales were studied: *G. clavigera* (*Gc*), *L. longiclavatum* (*Llo*), *Leptographium terebrantis* (*Lt*), *Grosmannia aurea* (*Ga*), *Leptographium wingfieldii* (*Lw*), *Grosmannia robusta* (*Gr*), *Grosmannia huntii* (*Gh*), *Leptographium lundbergii* (*Llum*), and *Ophiostoma montium* (Table 1). The identities of many isolates were previously characterized and confirmed using the DNA sequences of rRNA genes and additional protein coding genes (Lim *et al.* 2004). They were cultured and maintained in malt extract agar (MEA) (Tsui *et al.* 2012). Twenty isolates have *MAT1-1* idiomorphs, and 14 isolates have *MAT1-2* idiomorphs.

DNA extraction, polymerase chain reaction (PCR) amplification, sequencing

DNA was extracted from all isolates using the procedures described in Roe *et al.* (2011) and Tsui *et al.* (2012). The genome sequencing, assembly, and annotation of *G. clavigera* has been previously described in DiGuistini *et al.* (2011). Based on the genome sequence of *G. clavigera* (GenBank accession number: ACXQ02000000), genes homologous to cytoskeleton assembly protein (*SLA*), HMG-domain of *MAT*, and DNA lyase (*APN*), as well as a few hypothetical proteins without known functions, were identified and characterized (Figure 1) (DiGuistini *et al.* 2011). To characterize the *MAT1-1* idiomorph, we used a long-range PCR amplification approach coupled with primer walking sequencing. Primers ER and UP2-2F targeting the *SLA*, and a hypothetical protein-encoding gene (*CMQ_5208*) located downstream from the *MAT* locus were designed for long-range PCR reaction (Figure 1A) (Table 2). Primers UP2-2R and APN3R, which targeting *CMQ_5208* and *APN*, were also designed to amplify a 15 kb fragment of a putative *MAT1-1* isolate (Figure 1A).

Long-range PCR amplifications of DNA were carried out in 50 μ L using a PTC-100 thermocycler (MJ Research Inc., Watertown, MA). Reaction mixtures contained 100 ng of DNA, 1 \times PCR buffer, 200 μ M each dNTP, 0.6 μ M of each primer (Eurofins MWG Operon,

■ Table 1 Taxa and isolates used to characterize the mating-type (MAT) loci

Species	Isolate Code	Geographic Origin	Substrate	Year of Isolation	Idiomorph	GenBank Accession No.
<i>Grosmannia clavigera</i> (Gc)	SL-KW1407/UAMH11150 (genome isolate)	Kamloops, Canada	<i>Pinus contorta</i>	2001	MAT1-2	ACXQ02000000 (locus GL629756)
	B13	Banff, Canada	<i>Pinus contorta</i>	2003	MAT1-2	JX402933
	SS274	Fairview, Canada	<i>Pinus contorta</i> × <i>banksiana</i> hybrid	2007	MAT1-2	JX402934
	B101	Banff, Canada	<i>Pinus contorta</i>	2003	MAT1-1	JX402947
	ATCC18086 (holotype)	Cache Creek, Canada	<i>Pinus ponderosa</i>	1965	MAT1-1	JX402948
	SS278	Canmore, Canada	<i>Pinus contorta</i>	2007	MAT1-1	JX402945
	M6	Manning Park, Canada	<i>Pinus contorta</i>	2003	MAT1-1	JX402943
	M11	Manning Park, Canada	<i>Pinus contorta</i>	2003	MAT1-1	JX402944
	BW28	Banff, Canada	<i>Pinus contorta</i>	2003	MAT1-1	JX402946
	<i>Leptographium longiclavatum</i> (Llo)	SS86	Kakwa, Canada	<i>Pinus contorta</i>	2007	MAT1-2
HV7		Hidden Valley, USA	<i>Dendroctonus ponderosae</i>	2003	MAT1-2	JX402932
SS88		Kakwa, Canada	<i>Pinus contorta</i>	2007	MAT1-1	JX402953
SL-KW1436 (holotype)		Williams Lake, Canada	<i>Pinus contorta</i>	2004	MAT1-1	JX402954
HV18		Hidden Valley, USA	<i>Dendroctonus ponderosae</i>	2003	MAT1-1	JX402955
<i>Leptographium terebrantis</i> (Lt)	T26 (LPKRLT-3)	BC, Canada	<i>Pinus contorta</i>	2003	MAT1-2	JX402936
	T27 (CBS337.7)	Louisiana, USA	<i>Pinus taeda</i>	1966	MAT1-2	JX402937
	SS394	Fox Creek, Canada	<i>Pinus contorta</i> × <i>banksiana</i> hybrid	2007	MAT1-2	JX402935
	SS403	Crowsnest Pass, Canada	<i>Pinus contorta</i>	2007	MAT1-1	JX402956
<i>Grosmannia aurea</i> (Ga)	SS419	Grande Prairie, Canada	<i>Pinus contorta</i> × <i>banksiana</i> hybrid	2007	MAT1-2	JX402938
	SS471	Fox Creek, Canada	<i>Pinus contorta</i> × <i>banksiana</i> hybrid	2007	MAT1-2	JX402939
	CBS438.69 (OA18-A27) (holotype)	Invermore, Canada	<i>Pinus contorta</i> var. <i>latifolia</i>	1969	MAT1-1	JX402951
<i>Leptographium wingfieldii</i> (Lw)	AU98-Pr2-169	Princeton, Canada	<i>Pinus contorta</i>	NA	MAT1-1	JX402952
	CMW2095	NA	<i>Pinus strobus</i>	2004	MAT1-1	JX402950
<i>Leptographium lundbergii</i> (Llun)	CMW2096	NA	<i>Pinus sylvestris</i>	NA	MAT1-1	JX402949
	UAMH9584	Skutskar, Uppland, Sweden	<i>Pinus sylvestris</i>	NA	MAT1-2	JX402940
	UM1434	NA	NA	2004	MAT1-1	JX402941
<i>Grosmannia huntii</i> (Gh)	DAOM64706	Ontario, Canada	<i>P. strobus</i>	1961	MAT1-1	JX402958
	CBS398.77	NY	<i>P. monticola</i>	1963	MAT1-1	JX402942
<i>Grosmannia robusta</i> (Gr)	CMW185	South Africa	NA	2001	MAT1-2	JX402930
	CMW668	South Africa	<i>Picea abies</i>	2001	MAT1-1	JX402957
<i>Ophiostoma montium</i> (Om)	UAMH 1363	British Columbia, Canada	<i>Pinus contorta</i>	1959	MAT1-1	JX402993
	UAMH 4875	Alberta, Canada	<i>Pinus contorta</i>	1983	MAT1-1	JX402995
	UAMH 11095	Fox Creek, Canada	<i>Pinus contorta</i> × <i>banksiana</i> hybrid	2007	MAT1-2	JX402994
	UAMH 4838	Alberta, Canada	<i>Pinus contorta</i>	1986	MAT1-2	JX402996

Huntsville, AL), 1.5 µL of dimethyl sulfoxide and 2 U of Phusion DNA polymerase (Finnzymes; New England BioLabs, Ipswich, MA). The PCR amplifications were performed for 30 sec at 98°, followed by 35 cycles of 10 sec at 98°, 30 sec at 60–62° and 4 min at 72°, and final extension at 72° for 10 min. Sequencing reactions with primer walking were performed at the Centre de recherche du CHUQ, Québec,

Canada. Primers for sequencing are listed in (Supporting Information, Table S1).

After MAT idiomorph characterization, mating-type specific PCR assay was performed by designing primers HMG1 and HMG2 targeting the HMG domain, as well as primers MAT1x1 and MAT1x2 targeting the α-box domain (Figure 1B, Table 2). Fragments of

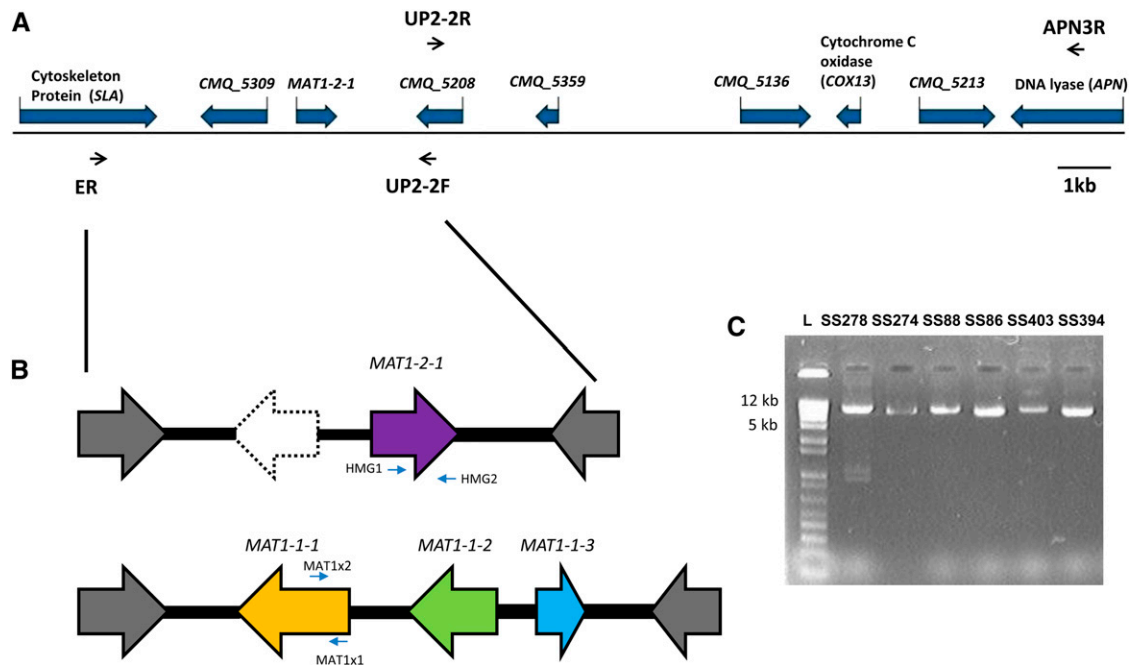


Figure 1 (A) Sequence arrangement and annotation of the *MAT* idiomorph and adjacent genes from annotated genome of *Grosmannia clavigera* SL-KW1407. (B) The *MAT* genes of opposite mating-type isolates as determined from long-range PCR and primer walking using primers ER and UP2-2F. Genes are indicated by different colors, and the arrows indicate the predicted directions of gene translation. (C) Amplicons of *MAT* fragments after long-range PCR were run in an agarose gel to indicate the size variation between *MAT1-2* and *MAT1-1* isolates.

cytochrome c oxidase subunit gene *Via* (*COX13*) and *APN* also were amplified for selected species and representatives (Table 2). PCR amplifications were carried out in 25 μ L using a PTC-100 thermocycler (MJ Research Inc.). Reaction mixtures contained 20–40 ng DNA, 1 \times PCR buffer, 200 μ M each dNTP, 1.5 μ M of each primer (Eurofins MWG Operon), and 1 U of Paq polymerase (Stratagene, Integrated Sciences). The PCR amplifications were performed for 3 min at 94 $^{\circ}$, followed by 30 cycles of 35 sec at 94 $^{\circ}$, 35 sec at 52–55 $^{\circ}$, and 35 sec at 72 $^{\circ}$, and final extension at 72 $^{\circ}$ for 7 min.

Gene annotation and analyses

The genome and transcriptomes of *G. clavigera* were assembled and annotated as described in (DiGuistini *et al.* 2011). Gene models were predicted using GLEAN, and the putative gene function assignments were generated from searches of the NCBI nr and Swiss-Prot databases using BLAST with PFAM domain assignments (DiGuistini *et al.* 2011).

Sequence reads after primer walking were assembled using the Staden package (Staden 1996) and Geneious Pro (<http://www.geneious.com/>), and they were compared with genes present in GenBank using BLASTx and BLASTn. The assembled sequences were submitted to FGENESH+ within Softberry (http://www.softberry.ru/berry.phtml?topic=fgenes_plus&group=programs&subgroup=gfs) for gene prediction and to determine the location of the coding/non coding regions, and manually annotated with Artemis (Rutherford *et al.* 2000).

The nucleotide sequences of both *MAT* idiomorphs were compared using dotplot (matrix) analyses implemented in Geneious. The sequences of the *MAT* loci were also compared across different species using the online Artemis Comparison Tool (<http://www.webact.org/WebACT/home>) with BLASTn algorithm.

Evolutionary analyses of *MAT* genes

The amino acid sequences encoded by the *MAT1-1* α -box and the *MAT1-2* HMG domain were aligned to sequences of other ascomy-

cetes from GenBank with Clustal W (Thompson *et al.* 1997) implemented in Geneious. Phylogenetic analysis was carried out with the Neighbor-joining (NJ) and maximum likelihood algorithm in MEGA 5 (Tamura *et al.* 2011), PhyML (Dereeper *et al.* 2008) implemented in (<http://www.phylogeny.fr/version2.cgi/index.cgi>), as well as PRODIST and PROML in PHYLIP 3.69 (Felsenstein 2005).

The nucleotide sequences were aligned in Geneious and manually adjusted with Se-Al v2 (Rambaut 1999) and analyzed with PAUP v4. b10 (Swofford 2003) and MEGA 5 (Tamura *et al.* 2011). Nucleotide data of different genes were subjected to parsimony analysis implemented in PAUP. Bootstrap support for the branches was based on 1000 replicates with TBR branch swapping algorithms and simple sequence addition. The individual data sets were also subjected to NJ implemented in PAUP using GTR model corrections with the proportion of variable sites and gamma shape estimated from Modeltest 3.7 (Posada 2006). Bootstrap values were estimated based on 1000 replicates. Sequences were deposited in GenBank (accession numbers of *MAT* idiomorphs: JX402930–JX402958, JX402993–JX402996; of other genes: JX402959–JX402992).

Signatures of purifying or positive selection acting on the *MAT* genes were tested at the codon level. A maximum likelihood analysis was used to fit codon substitution models to the data using the CODEML program within PAML (Yang 2007). Four random site models were used to describe the variation of ω ($= dN/dS$) among codon sites in an alignment containing the full length *MAT1-1-1* and truncated *MAT1-1-1* genes of six species. Random site models M1A (neutral), M2A (selection), M7 (beta), and M8 (beta and selection) were used to describe the variation of ω among codon sites within each *MAT1* gene. M1a assumes two site classes in proportions p_0 and $p_1 = 1 - p_0$ with $0 < \omega_0 < 1$ (purifying selection) and $\omega_1 = 1$ (neutral). M2a adds an additional class of site with ω_2 as a free parameter, allowing for sites with $\omega_2 > 1$ (positive selection) with proportion p_2 . M7 is a flexible null model in which a v ratio for each codon is

randomly selected from a beta distribution between 0 and 1. M8 adds one additional site class to M7 allowing for positive selection. A test for positive selection was implemented using likelihood ratio tests that compare models pair M1a/M2a (Yang 2007). Three different starting ω values (0.2, 1.0, and 2.0) were implemented for each model fitting, as described in (Joly *et al.* 2010). Codon sites under positive selection were then identified using the empirical Bayes method to calculate the posterior probability that a particular amino acid belongs to a given selection class (neutral, deleterious, or advantageous) (Yang 2007).

Analysis of mating-type distribution in populations of *G. clavigera* and *L. longiclavatum*

We used the aforementioned mating-type primers (HMG 1, HMG2, MAT1x1, MAT1x2) to identify mating-types in populations from Canada and the USA (Table 2). We performed PCR on DNA extracted from 335 isolates of *G. clavigera* characterized in a previous study (Tsui *et al.* 2012), as well as more than 100 isolates of *L. longiclavatum* currently being investigated (Farfan *et al.* 2011). Mating-type distributions were tested for deviation from the expected ratios of 1:1 using chi-square goodness-of-fit tests.

Reverse transcriptase (RT) quantitative PCR amplification

RNA was extracted and RT was performed from *G. clavigera* isolate SL-KW1407 cultured on 1% MEA overlaid with cellophane for 4 d (DiGuistini *et al.* 2011) to determine the level of expression from hypothetical protein encoding gene *CMQ_5309* (truncated *MAT1-1-1* gene) and *MAT1-2-1*. RT-quantitative PCR was also carried out with SsoFast EvaGreen Supermix (Bio-Rad) in a volume of 20 μ L in a Bio-Rad CFX384 system. Primer pairs were internal to regions of *MAT1-2-1* and truncated *MAT1-1-1* to yield amplicons of 100–120 bp (Table 2). PCRs were described as follows: 96° for 45 sec, followed by 35 cycles of 95° for 15 sec, and 57.5° for 30 s, followed by a melt-curve analysis. The Cq value for amplification of the β -tubulin gene was used as a reference.

RESULTS

Organization of the mating-type locus in *G. clavigera*

The *MAT1-2* idiomorph and flanking genes of *G. clavigera* isolate SL-KW1407 were identified from the genome (Figure 1A), and the amplification of the *MAT1-2* idiomorph from isolate *G. clavigera* SS274 demonstrated greater than 99.9% sequence similarity to the sequence of the reference genome. The gene order and orientation near the *MAT* locus was syntenic with other Sordariomycetes. Two ORFs were predicted in the *MAT1-2* idiomorph. One of the translated proteins bearing the HMG domain (285 amino acids; EFX05114) was homologous to the *MAT1-2-1* of other ascomycetes and shared 65% similarity to that of *Ophiostoma himal-ulmi*. In contrast, *CMQ_5309*, encoding a hypothetical protein (EFX04946.1), had no significant similarity to any genes in the NCBI sequence database. *SLA2*, which encodes the cytoskeleton assembly control protein (EFX04935.1), was located upstream from the *MAT* locus, whereas cytochrome c oxidase subunit (EFX05020.1) gene *COX13* and DNA lyase (EFX04950.1) gene *APN2* were located downstream from the *MAT* (Figure 1A). The deduced amino acids of *SLA* and *APN* had 68% and 62% identities, respectively, to those of *Neurospora crassa*, a relative in the Sordariomycetes. However, the intergenic distance between *MAT* and *APN* loci in *G. clavigera* was large, spanning greater than 10 kb with several putative proteins coding genes of unknown functions identified (Figure 1A). One of the putative proteins (*CMQ_5213*; EFX04951) had a protease-associated domain and was homologous (35% similarity) to a RING-9 protein in *Verticillium albo-atrum* (XP_003007854). The functions of these additional genes to mating activity are not yet established. tBLAST searches using the α -box domain containing genes from different ascomycetes as queries did not return any significant matches in the SL-KW1407 genome, confirming the absence of *MAT1-1-1* gene in the reference isolate.

Using the primer walking approach, we obtained the full sequence (22,910 bp) of the *MAT1-1* idiomorph of *G. clavigera* isolate B101. The gene arrangement was syntenic to the assembled genome of

■ Table 2 Major primers used in this investigation

Target Gene	Primer Name	Sequence (5'-3')
Regular PCR		
<i>SLA</i> of <i>G. clavigera</i>	ER	GCCACGTCGTTCAACAACATA
Hypothetical protein (<i>CMQ_5309</i> of <i>G. clavigera</i>)	UP2-2F	AGATGGTCATCTCCCCTGAC
	UP2-2R	AGATGGTCATCTCCCCTGAC
HMG domain in <i>G. clavigera</i>	HMG1	CCGCGCCACCCAATGCGTACAT
	HMG2	CGAGGGTTGTATCTGTAGTCAGG
alpha-box domain in <i>G. clavigera</i>	MAT1x1	CGTCCACTGAATGCCTTCATG
	MAT1x2	GTGGGCAATCATAGCCAAAGT
Cytochrome C oxidase of <i>G. clavigera</i>	COX13A	GCTTGACGCAACTATCTCTGC
	COX13B	TGCATCCCCTACTCGATACAC
DNA lyase (<i>APN</i>) of <i>G. clavigera</i>	cAPNR	GATTCCTTTTACAGCTTTCCCAC
	APN2R	GACGAGGAGCTGCATCAGG
	APN3F	GACAGGATCACGAACACAACC
	APN3R	TCTTCGATTGGCTCTTTAGGG
<i>SLA</i> of <i>O. montium</i>	OM7R	CAACACGCTCATTGAGAC
HMG domain in <i>O. montium</i>	OM-HMG1	CGCCCCCAATGCCTACATTC
	OM-HMG2	CGGGGATTGACTTGTAGTGCGG
alpha-box domain in <i>O. montium</i>	OM-A1	GAATGCCTTCATGGCCTTCC
	OM-A2	ACCTTTGCCATCAACGTCCATTT
Real-time PCR		
truncated <i>MAT1-1-1</i>	pMF2	GATCAGATGGGCAAGCTCAG
	pMR2	AAGGCTTGAAGGACGTGTT

PCR, polymerase chain reaction.

G. clavigera isolate SL-KW1407. The genes of *SLA*, *MAT*, *COX13*, and *APN* were located in the identical order and orientation in both *MAT1-1* and *MAT1-2* idiomorphs. At the nucleotide level, the sequence of the >15-kb fragment spanning from hypothetical protein coding gene *CMQ_5208* to *APN* was 99.9% identical in isolates B101 and SL-KW1407.

Three open reading frames (ORFs) were predicted in the *MAT1-1* idiomorph of isolate B101, encoding proteins of 619, 340, and 171 amino acids, respectively (Figure 1B). The first protein had α -box domain and was homologous (52% similarity) to the *MAT1-1-1* (ACZ53927.1) of *Ophiostoma novo-ulmi* subsp. *novo-ulmi*. The second and third proteins were also 24% and 52% similar to the *MAT1-1-2* (ACZ53926.1) and *MAT1-1-3* (ACZ53925.1) of *O. novo-ulmi* subsp. *novo-ulmi*, respectively.

Dotplot comparison of the *MAT1-1* and *MAT1-2* idiomorphs revealed nucleotide sequence similarity (99%) in the *SLA* encoding gene, regions upstream from the *MAT* locus, as well as the gene encoding protein *CMQ_5208* (Figure 2A). Surprisingly the gene encoding putative protein (*CMQ_5309*; EFX05047.1) located upstream from the *MAT1-2-1* gene in isolate SL-KW1407 was homologous (>80% similarity in amino acids) to the *MAT1-1-1* gene in the *MAT1-1* idiomorph but shorter in length and without introns. Sequence comparison revealed α -box domain truncation/deletion (89 amino acids) at the N-terminus of the putative protein. The start codon was, however, present in the putative protein coding sequence (now called truncated *MAT1-1-1*) followed by five codons that are not homologous to the *MAT1-1-1* on the *MAT1-1* idiomorph (Figure 2B). This 15bp 5' end sequence was used to search the *G. clavigera* genome as well as the NCBI database but no significant match was returned.

The *MAT* loci of additional *G. clavigera* isolates from different geographic locations were also sequenced using the identical long-range PCR approach to investigate whether the truncated *MAT1-1-1* gene could be unique solely to isolate SL-KW1407 (Table 1). Sequencing data confirmed that the isolates bearing the same mating-type have identical idiomorph size (data not shown). The presence of this truncated gene in multiple *G. clavigera* isolates confirms that it is not a spurious result or a unique feature of the reference isolate.

Organization of the *MAT* idiomorphs in fungal species related to *G. clavigera*

The presence of the truncated/incomplete gene suggested that the ancestor of *G. clavigera* may have had both *MAT1-1* and *MAT1-2* copies and was homothallic. To understand the evolutionary history leading to the presence of the truncated *MAT1-1-1* gene, we used the same primer pair ER and UP2-2F (targeting *SLA* and hypothetical protein-coding gene *CMQ_5208*) to characterize the *MAT* loci of several fungi related to *G. clavigera* (Lim *et al.* 2004) (Table 1). If the truncated gene has been inherited from a common ancestor, it may be preserved in other related species since it may confer an evolutionary or ecological advantage.

Sequences containing orthologous genes of the *MAT* locus and flanking regions were characterized from 21 isolates belonging to seven species within the Ophiostomatales: *Llo*, *Lw*, *Lt*, *Llun*, *Ga*, *Gr*, and *Gh* (Table 1, Figure 1C). Interspecific variations in fragment size ranged from 5787 to 8011 bp in *MAT1-1* isolates, and from 5209 to 7727 bp in *MAT1-2* isolates among different species. The variations in fragment size are also partly due to incomplete sequencing of the flanking sequences of *SLA* and the putative protein-coding gene *CMQ_5208*. The 3' end of mating-type loci in *Llun* and *Gh* were

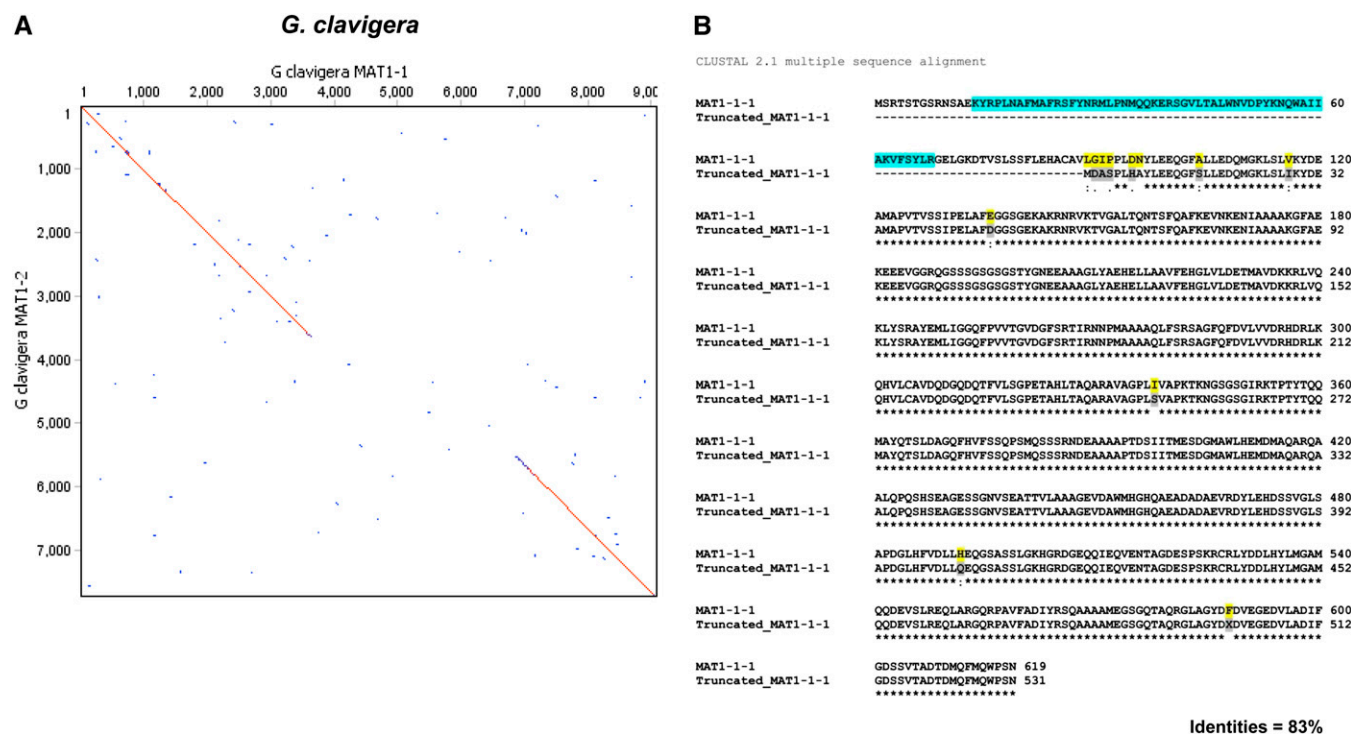


Figure 2 Comparison of *MAT* loci in *Grosmannia clavigera*. (A) Dotplot comparison/pairwise alignment of DNA sequence data for *MAT1-1* and *MAT1-2* idiomorphs of *G. clavigera*. Sequence lengths are given along the axes. (B) The amino acid alignment of *MAT1-1-1* in *MAT1-2* idiomorph to the truncated *MAT1-1-1* in *MAT1-2* idiomorph of *G. clavigera* by Clustal W. The comparison indicates the deletion of α -box domain (in square) in truncated *MAT1-1-1*.

incomplete because the primers targeting the *CMQ_5208* failed to amplify, and a new primer GCM3 was designed to target the conserved regions in the *MAT1-1-3* for *MAT1-1* idiomorph characterization. Conversely, primer HMG2 targeting *MAT1-2-1* gene was used to amplify the partial *MAT1-2* idiomorph fragment. Only the *MAT1-1* idiomorphs of *Lw* and *Gr* were obtained because *MAT1-2* isolates were not available (Table 1). The *MAT1-1* idiomorph of *L. lundbergii* isolate DAOM64706 was shorter and incomplete when compared with other taxa, so its sequence was not included in the analyses.

Dotplot comparison of the *MAT1-1* and *MAT1-2* idiomorphs in each of the species also revealed nucleotide sequence similarity (95–99%) in the SLA protein-coding regions, regions upstream from the *MAT* locus, as well as the *CMQ_5208* (Figure S1). The organization of the idiomorphs among these seven species was identical, with the presence of three predicted ORFs in the *MAT1-1* idiomorph and two ORFs in the *MAT1-2* idiomorph, in addition to the truncated *MAT1-1-1* gene (the comparison among *Gh*, *Gc*, and *Llo* is illustrated in Figure 3). The nucleotide sequence of the *MAT* idiomorphs was similar among these seven species within *Grosmannia*: it ranged from 72% between *G. clavigera* and *G. huntii* to 97.5% between *G. clavigera* and *L. longiclavatum* (Table S2 and Figure 3, A and B). Sequence similarity was much lower when compared to other ascomycetes.

Ophiostoma is a sister genus to *Grosmannia* (Zipfel *et al.* 2006). A genomic DNA library of *O. montium* populations (R. C. Hamelin, unpublished data) was searched to design primers anchoring the *SLA* and the flanking regions of the *MAT* locus in both mating-types. Using a long-range PCR amplification and primer walking approach, we also amplified the *MAT* locus from four isolates of *O. montium* including both mating-types (Tables 1 and 2). We found fragments of ca. 6 kb and 5 kb in size that corresponded to both *MAT1-1* and *MAT1-2* idiomorphs. Dotplot comparison of the *MAT1-1* and *MAT1-2* idiomorphs were similar to the orthologs from *Grosmannia* species and revealed nucleotide sequence similarity in the *SLA* protein and intergenic regions upstream from the *MAT* locus (Figure 4A). The *MAT1-1* idiomorph had three putative ORFs that corresponded to *MAT1-1-1*, *MAT1-1-2*, and *MAT1-1-3* genes, and they were similar (53–76% at amino acids level) to those of *O. novo-ulmi* subsp. *novo-ulmi* (Figure S2). The *MAT1-2* idiomorph contained a *MAT1-2-1* gene encoding a protein (263 aa) with HMG domain (75% similar to that of

O. novo-ulmi subsp. *novo-ulmi*), as well as a truncated *MAT1-1-1* gene without the α -box domain located upstream from the *MAT1-2-1* gene. The truncated *MAT1-1-1* (224 amino acids) was short when compared with the original *MAT1-1-1* (714 aa) in the *MAT1-2* idiomorph (Figure 4B) and the extent of deletion/truncation was greater than that in *Grosmannia* species.

Evolutionary analyses of the *MAT* loci

Phylogenetic analysis inferred from 129 amino acid characters from HMG-domain of 74 ascomycetes supported the monophyletic origin of fungi in Ophiostomatales, and *Grosmannia* and *Ophiostoma* formed a sister relationship with strong statistical support (Figure 5). Representatives of these two genera also clustered with the members of *Neurospora* and *Sordaria* in Sordariomycetes, with strong likelihood support. Within the cluster of Ophiostomatales, *G. clavigera*, *L. longiclavatum*, and *L. terebrantis* together with either *G. aurea* or *L. wingfieldii* formed a monophyletic clade with >90% bootstrap support. *O. montium* formed a sister relationship to a cluster containing *O. novo-ulmi* and its relatives. *Sporothrix schenckii*, a human pathogen, also nested within the same cluster with strong support (93%). Sequence analysis of α -box domain from 39 ascomycetes species also supported the same sister relationship between *Grosmannia* and *Ophiostoma* but the relationships among the major ascomycete families were not well resolved (Figure S3).

MAT genes have been useful for evaluating the phylogenetic relationships among different fungal species (Debuchy and Turgeon 2006; Devier *et al.* 2009). Gene genealogies of *MAT1-1-2*, *MAT1-1-3*, and *MAT1-2-1* (Figure S4) were concordant with previous species relationships established based on rRNA and other protein coding genes (Lim *et al.* 2004). Also, phylogenetic analyses of *SLA*, intergenic regions upstream of full-length *MAT1-1-1* and truncated *MAT1-1-1*, *COX13*, and *APN*, demonstrated that sequences of opposite mating-types corroborate species phylogenies rather than showing *trans*-specific polymorphism (Figure S5). There were no strong conflicts in tree topologies inferred from genes at and flanking the *MAT* locus. Also there was no conflict in topologies among various tree-building algorithms.

Phylogenetic analyses of the nucleotide sequences inferred that recombination occurred in the flanking sequences upstream from

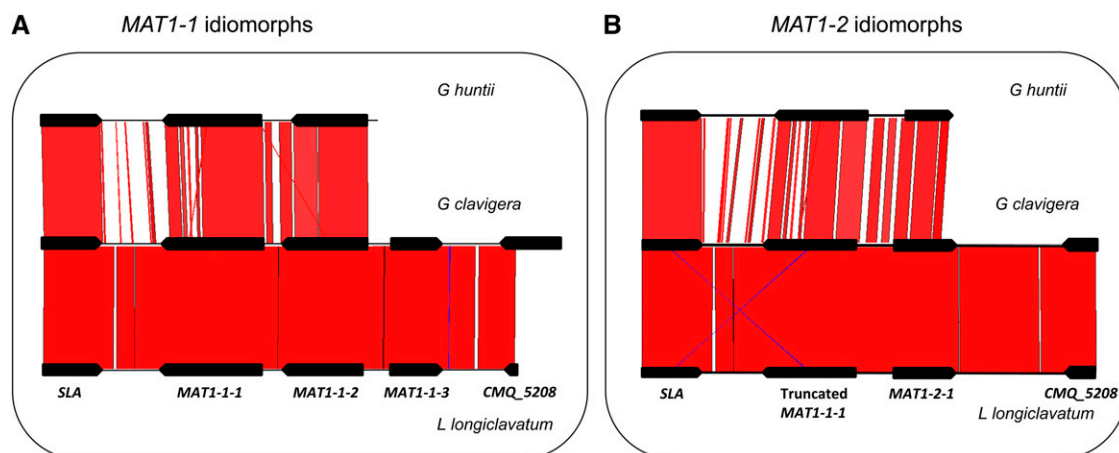


Figure 3 Homology among the *MAT* locus. (A) *MAT1-1* idiomorph; (B) *MAT1-2* idiomorph, of *G. huntii*, *G. clavigera*, and *L. longiclavatum*. The diagram was prepared from the output of Artemis Comparison Tool. Regions of strong homology are shaded and connected by lines. The intensity of shading indicates the strength of homology. Genes are represented by box arrows. The *MAT1-2* sequence of *G. clavigera* SL-KW1407 was obtained from the genome sequence, while the *MAT1-1* sequence of *G. clavigera* and opposite *MAT* isolates of other fungi were obtained in this investigation.

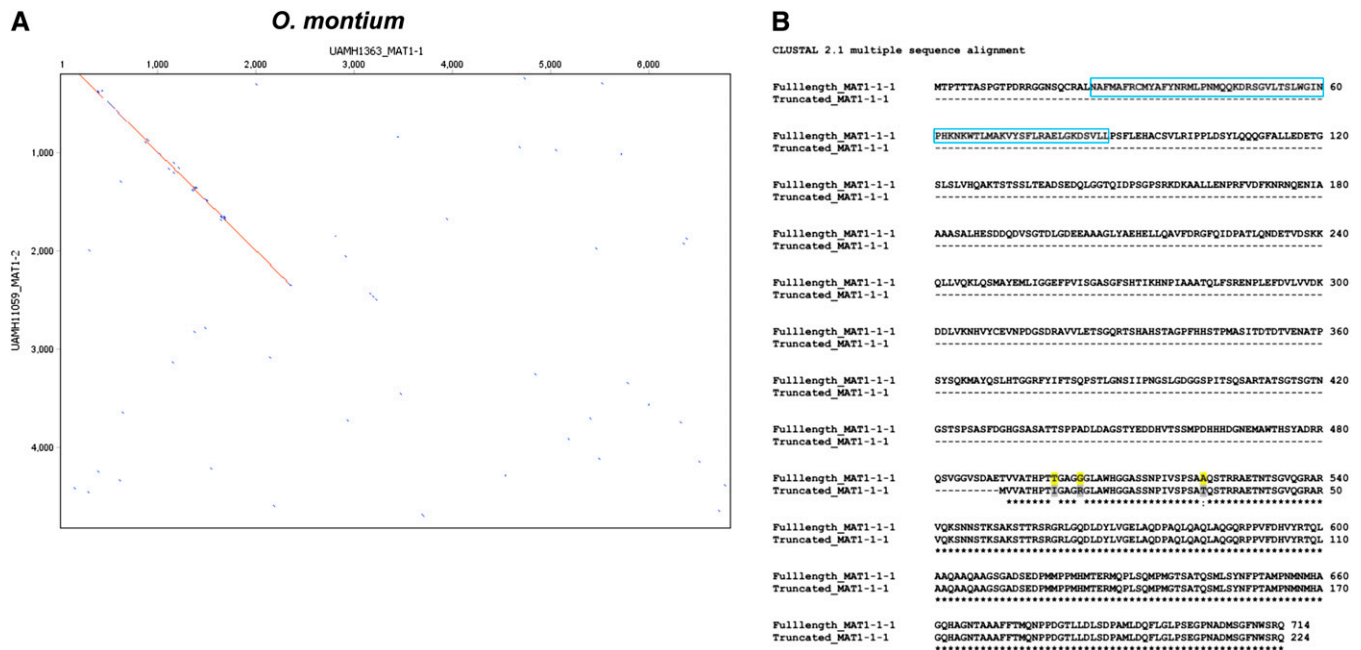


Figure 4 Comparison of *MAT* loci in *Ophiostoma montium*. (A) Dotplot comparison/pairwise alignment of DNA sequence data for *MAT1-1* and *MAT1-2* idiomorphs of *O. montium*. Sequence lengths are given along the axes. (B) The amino acid alignment of *MAT1-1-1* in *MAT1-2* idiomorph to the truncated *MAT1-1-1* in *MAT1-1* idiomorph of *O. montium* by Clustal W. The comparison indicates the truncated *MAT1-1-1* was highly eroded and the absence of α -box domain (in square in full length *MAT1-1-1*).

MAT1-1-1 and truncated *MAT1-1-1* genes (Figure 6, A and B). The tree topology of flanking sequence did not conflict with that of *SLA* coding sequences (Figure S5) because representatives of both mating-types clustered within a species (Figure 6A). Without recombination, the flanking sequence on *MAT1-1* idiomorph would be expected to cluster separately to the flanking sequence on the *MAT1-2* idiomorph in the gene genealogy. The nucleotide sequence of truncated *MAT1-1-1* genes diverged from the full-length *MAT1-1-1* genes as a result of independent accumulation of mutations (Figure 6B). Sequences of the opposite mating-type within a species did not cluster together as for the *SLA* gene, but were divergent even though they had high similarity (83%) at the amino acid level.

Based on the tests of selection using likelihood ratio tests, diversifying (positive) selection was detected in the truncated *MAT1-1-1* from the full-length *MAT1-1-1* at the intraspecific level (Tables 3, A and B). The truncated *MAT1-1-1* genes in the *MAT1-2* idiomorph are under positive selection from the full-length *MAT1-1-1* genes on the *MAT1-1* idiomorph in *G. clavigera*, *L. longiclavatum* and *G. aurea*, but not *L. terebrantis* (Tables 3, A and B). The truncated/incomplete *MAT1-1-1* gene may go through neutral evolution due to loss of function or adaptive evolution. In contrast, tests of selection on *MAT* genes (*MAT1-2-1*, *MAT1-1-1*, and truncated *MAT1-1-1* individually) at the interspecific level revealed purifying selection (Table S3C), indicating that these genes are preserved for proper function of the sexual cycle.

Transcript analysis of *MAT* genes

The *MAT1-1-1* gene with α -box domain is a master regulator of sexual reproduction and is involved in gamete fertilization and the formation of ascogenous hyphae; the deletion of *MAT1-1-1* gene can lead to incomplete development of perithecia in some ascomycetes (Debuchy *et al.* 2010). To determine whether the truncated *MAT1-1-1* gene is transcribed, PCR and RT-qPCR experiments were performed on the

cDNA. The *MAT1-2-1* gene ($C_q = 28$) and truncated *MAT1-1-1* gene ($C_q = 32.9$) were expressed during the vegetative stage in mycelia (4d culture with cellophane overlaid on MEA plates), even though the expression level was low compared with the reference β -tubulin gene ($C_q = 25.5$). The data were also consistent with the low level of sex gene expression reported in transcriptomic data in various terpenoid compound treatments (DiGuistini *et al.* 2011) (Table S4).

Determination of *MAT* type ratio in populations of *G. clavigera* and *L. longiclavatum*

Using specific primers targeting the α -domain and HMG domain, we detected both the *MAT1-1* and *MAT1-2* idiomorphs in *G. clavigera*. We tested the null hypothesis of balanced numbers of the two *MAT* idiomorphs within the epidemic population samples in Tsui *et al.* (2012). Both mating-types were present in the populations at all of the spatial scales. *MAT1-1* and *MAT1-2* frequencies did not significantly deviate from a 1:1 ratio in any of the 19 populations, the four genetic clusters inferred from Bayesian estimation during population genetic studies, nor the entire population ($P < 0.05$) (Table 4A). Similarly both *MAT1-1* and *MAT1-2* also were detected in populations of *L. longiclavatum*, and its mating-type ratio did not deviate significantly from 1:1 at small spatial scale (Table 4B). However the *MAT* ratio was significantly different at larger landscape level, where *MAT1-1* isolates appeared more frequent in the Rocky Mountain (Cluster Rocky) whereas *MAT1-2* isolates were predominant in the new epidemics area (Cluster North; northern British Columbia and Alberta) (Table 4B).

DISCUSSION

The *MAT* locus organization indicates heterothallism

All fungal species in this study are heterothallic because they have a locus with one of the two alternative single-copy idiomorphs, *MAT1-1* or *MAT1-2*. The organization of opposite *MAT* loci was

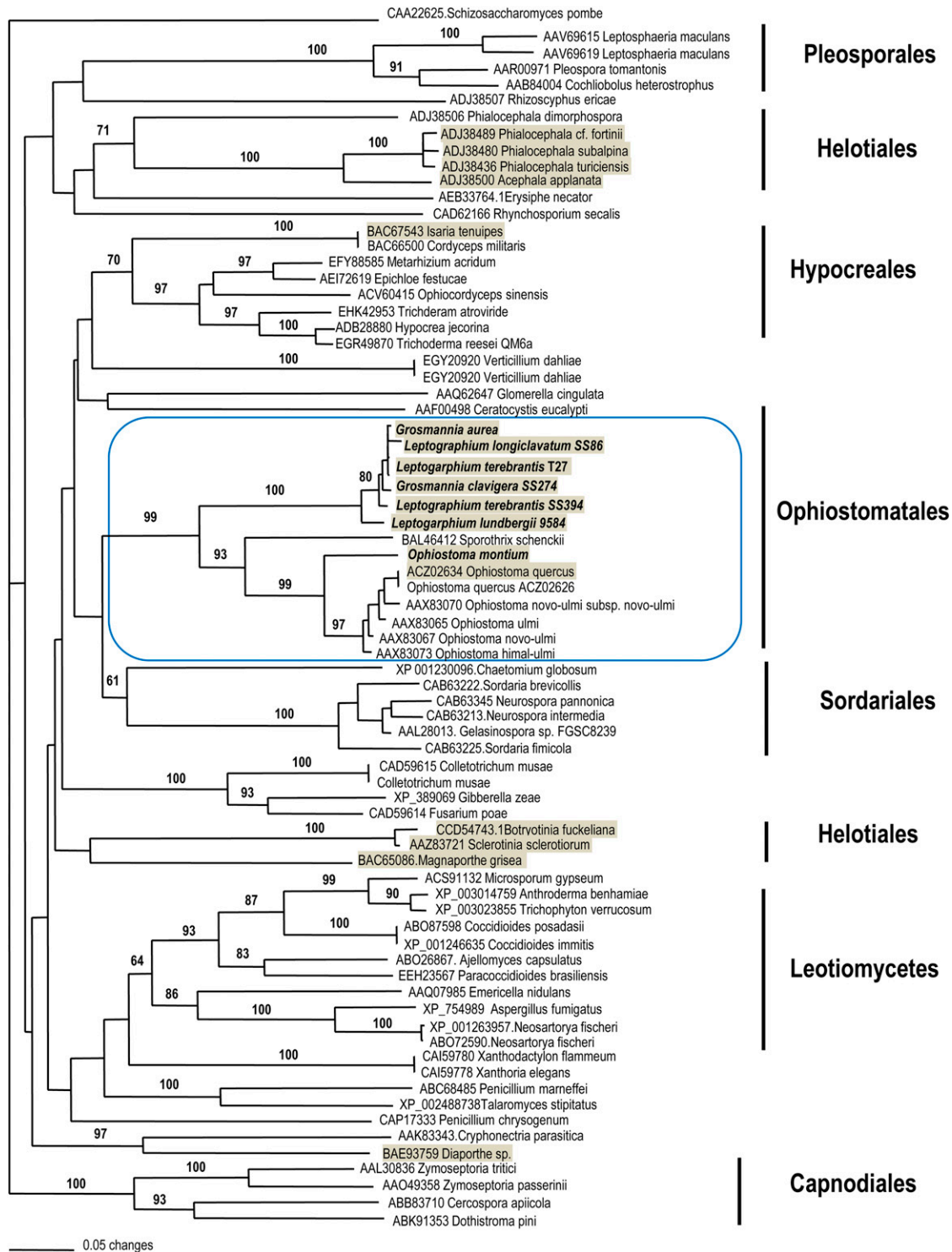


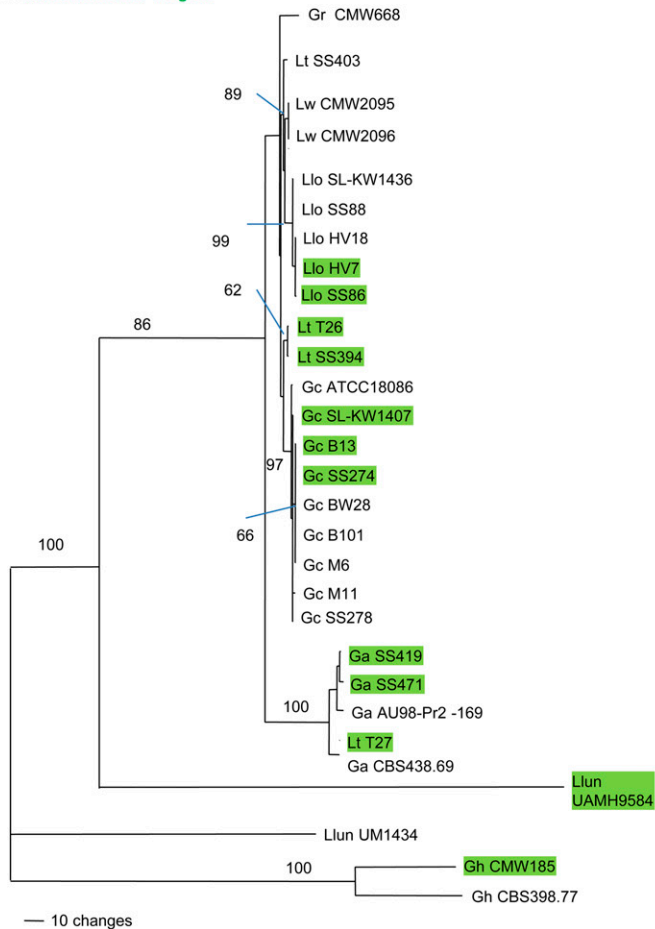
Figure 5 NJ tree generated from MEGA showing the phylogenetic relationships among ascomycetes inferred from the HMG domain (129 amino acid characters) of the MAT1-2-1. Number on branches indicated bootstrap support (1000 pseudoreplicates) more than 60% from NJ and PhyML (from left to right). The taxa shaded in gray indicate the presence of truncated *MAT* genes in opposite *MAT* isolates.

highly conserved among *L. longiclavatum*, *L. terebrantis*, *G. aurea*, *G. huntii*, *L. lundbergii*, *L. wingfieldii*, and *O. montium*, thus supporting a common origin in Ophiostomatales (Butler 2007). Also the general *SLA-MAT-APN* pattern, as well as the synteny and orientation of *MAT1-1-1*, *MAT1-1-2*, and *MAT1-1-3* genes on *MAT1-1* idiomorph are consistent with other representatives within Sordariomycetes, such

as *Neurospora*, and *Podospora* (Debuchy and Turgeon 2006). This suggests a common evolutionary origin of the *MAT* organization/structure for members of the Ophiostomatales and even the Sordariomycetes.

Whether heterothallism is the ancestral state in ascomycetes has been a major biological question in fungal evolution (Coppin *et al.*

A Intergenic sequence between SLA and *MAT1-1-1* genes and truncated *MAT1-1-1* gene



B *MAT1-1-1* & Truncated *MAT1-1-1* genes

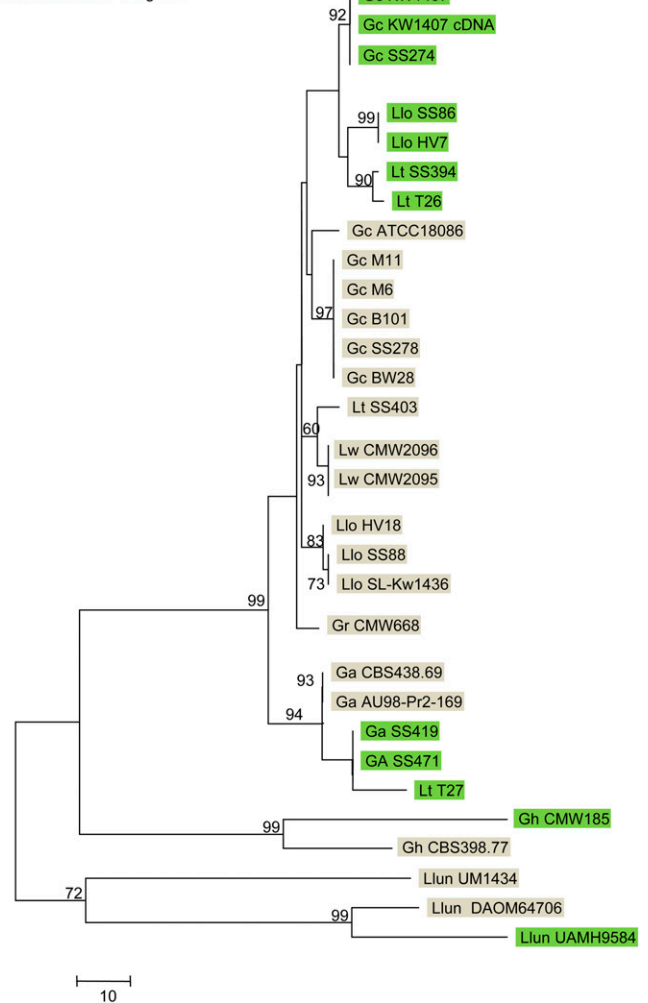


Figure 6 Gene genealogies showing the phylogenetic relationships between *G. clavigera* and relatives. (A) Intergenic sequences after 3' end of SLA to the 5' end of the truncated *MAT1-1-1* and *MAT1-1-1* genes (1349 characters), and (B) the full-length and truncated *MAT1-1-1* genes. *MAT1-2* isolates are indicated in green while *MAT1-1* isolates are highlighted in gray (1968 characters). Number on branches indicated bootstrap support (500 pseudoreplicates) greater than 60%.

1997; Butler 2007). Evolution from heterothallism (outcrossing) to homothallism (haploid selfing) could be the most likely scenario based on population genetics models (Nauta and Hoekstra 1992; Billiard *et al.* 2011). Recent analyses of mating-type evolution have ascertained *Neurospora* to be heterothallic in ancestry (Strandberg *et al.* 2010; Nygren *et al.* 2011; Gioti *et al.* 2012). We speculate that the representative of *Grosmannia* and *Ophiostoma* may have diverged from the same common heterothallic ancestor as *Neurospora*. However, it is important to determine the mating-type organization from additional species in Ophiostomatales because their mating systems and breeding strategies (Wilken *et al.* 2012) may be different from other Sordariomycetes.

Another special feature in the *MAT* locus is that *COX13* is located between *MAT* and *APN* genes in *G. clavigera*, and this is similar to the organization found in the human pathogen *Histoplasma capsulatum* (Fraser *et al.* 2007). Although the *MAT* and *APN* loci were at least 15 kb apart, there was no evidence to suggest the presence of transposable elements, which have been reported in *MAT* locus expansion in the obligate biotroph *Blumeria graminis* (Spanu *et al.* 2010), *H. capsulatum*

(Fraser *et al.* 2007) and the endophyte *Phialocephala fortinii* (Zaffarano *et al.* 2010).

Unequal recombination defined the evolution of the truncated *MAT1-1-1* genes in *Grosmannia* and *Ophiostoma*

Most fungi in this investigation carried the truncated *MAT1-1-1* in the *MAT1-2* idiomorphs. The polymorphism between full-length and truncated *MAT1-1-1* indicated that the event leading to the current *MAT* loci organization was ancient—before the radiation of *G. clavigera* from other species. A number of competing scenarios may account for the evolutionary origin of this unique organization.

Unequal recombination/crossover at the *MAT* locus between opposite mating-type idiomorphs during the pairing of chromosomes should be the most favorable mechanism to account for the truncated *MAT1-1-1* (Gioti *et al.* 2012) (Figure 7). The ancestral *MAT1-2* idiomorph of *Grosmannia* and *Ophiostoma* members contained one ORF corresponding to the *MAT1-2-1* gene bearing the HMG domain. A fragment of the *MAT1-1* idiomorph, for instance the *MAT1-1-1* gene

■ Table 3 Parameter estimates and likelihood values of the various models of codon evolution using CODEML in PAML

Model	Model Parameters	-lnL	Models Comparison	2ΔL	Pr.	Sites Under Positive Selection (Bayes Empirical Bayes, Pr. $\omega > 1$)
A. Test on the truncated and full-length MAT1-1 genes within a species (datasets with positive selection detected)						
<i>G. clavigera</i> (9 isolates)	$P_0 = 0.26, P_1 = 0.74$	2172.75	M1a vs. M2a	17.70	<0.001	2 G (0.99**), 3 I (0.99**), 8 N (0.99**)
M2a (selection)	$P_0 = 0.99, P_1 = 0.00, P_2 = 0.004, \omega_2 = 227.05$	2163.90				
M7 (beta)	$P = 2.30, q = 0.005$	2172.75	M7 vs. M8	17.41	<0.001	2 G (0.99**), 3 I (0.99**), 8 N (0.99**)
M8 (beta + ω)	$P_0 = 0.98, P = 0.005, q = 3.27, P_1 = 0.02, \omega = 81.42$	2164.05				
M1a (neutral)	$P_0 = 0.77, P_1 = 0.23$	2102.86	M1a vs. M2a	21.18	<0.001	3 A (0.94), 8 A (0.94)
<i>G. aurea</i> (four isolates)						
M2a (selection)	$P_0 = 0.99, P_1 = 0.00, P_2 = 0.003, \omega_2 = 282.78$	2092.27				
M7 (beta)	$P = 0.005, q = 0.012$	2102.96	M7 vs. M8	21.37	<0.001	3 A (0.97*), 8 A (0.97*)
M8 (beta + ω)	$P_0 = 0.99, P = 0.005, q = 15.47, P_1 = 0.003, \omega = 282.82$	2092.27				
M1a (neutral)	$P_0 = 0.72, P_1 = 0.28$	2183.24	M1a vs. M2a	18.88	<0.001	3 A (0.93), 8 A (0.93)
<i>L. longiclavatum</i> (five isolates)						
M2a (selection)	$P_0 = 0.99, P_1 = 0.00, P_2 = 0.002, \omega_2 = 209.51$	2173.80				
M7 (beta)	$P = 0.005, q = 0.011$	2183.25	M7 vs. M8	18.90	<0.001	3 A (0.97*), 8 A (0.97*)
M8 (beta + ω)	$P_0 = 0.99, P = 0.51, q = 1.49, P_1 = 0.001, \omega = 209.58$	2173.80				
B. Test on the truncated and full-length MAT1-1 genes within a species (dataset without positive selection detected)						
<i>L. terebrantis</i> (4 isolates)		2462.37	M1a vs. M2a	1.30	ns	
M2a (selection)		2461.72				
M7 (beta)		2462.54	M7 vs. M8	1.65	ns	
M8 (beta + ω)		2461.72				

Parameter estimates and likelihood values of the various models of codon evolution using CODEML in PAML. Notes for *G. clavigera*: Models assuming positive selection (M2a and M8) fit better the data than neutral models (M1a and M7) according to likelihood ratio tests. Model M2 assumes that 0.4% of the sites have dN/dS value = 227.05. Three sites under strong positive selection ($P > 0.99$) are identified by this model with Bayes empirical Bayes methods. Model M8 showed that approximately 98% of sites have dN/dS from a U-shaped beta distribution (hence, data fit strongly this model) and approximately 2% of sites are under strong positive selection with $dN/dS = 81.4$. Both models M2 and M8 identified the same positive selection sites with Bayes empirical Bayes methods (even if model M8 would assume more sites under positive selection).

■ Table 4 MAT ratio tests on populations of *Grosmannia clavigera* and *Leptogaphium longiclavatum*

Population (Location, Province, or State)	Number Total	Clone Corrected (293 Isolates)		
		MAT1-1	MAT1-2	χ^2 (P Value)
A. MAT ratio of <i>Grosmannia clavigera</i> population, including location and sample size (after clone correction) (*$p < 0.05$)				
Houston, BC	16	5	11	2.25, $P = 0.133$
Fort St. James, BC	23	13	10	0.39, $P = 0.532$
Tumbler Ridge, BC	13	6	7	0.0769, $P = 0.7815$
Fairview, BC	11	4	7	0.8182, $P = 0.3657$
Grande Prairie, AB	20	8	12	0.8, 0.3722
Fox Creek, AB	12	5	7	0.333, 0.5637
Kakwa, AB	17	5	12	2.8824, 0.08956
Valemount, BC	8	4	4	0, 1
Williams Lake, BC	15	4	11	3.2667, 0.0707
Manning Park, BC	19	10	9	0.0526, 0.8185
Golden, BC	8	4	4	0, 1
Yoho, BC	7	3	4	0.1429, 0.7055
Banff, AB	20	11	9	0.2, 0.6547
Canmore, AB	39	14	25	3.1026, 0.07817
Cypress Hills, AB	5	2	3	0.2, 0.6547
Sparwood, BC	7	3	4	0.1429, 0.7055
Crowsnest Pass, AB	9	5	4	0.1111, 0.7389
Hidden Valley, MT, USA	20	11	9	0.2, 0.6547
Hell Roaring, ID, USA	24	15	9	1.5, 0.2207
Total	293	132	161	2.8703, 0.09023
Genetic clusters inferred from Tsui <i>et al.</i> (2012)				
NBC	39	18	21	0.231, 0.63
NORTH	81	32	49	3.57, 0.059
SBC	34	14	20	1.059, 0.303
ROCKY	139	68	71	0.065, 0.799
B. MAT ratio of <i>Leptogaphium longiclavatum</i> populations, including locations and sample size (after clone correction) (*$p < 0.05$)				
Canmore	15	4	11	3.27, 0.07
Crowsnest Pass	6	2	4	0.667, 0.414
Cypress Hills	2	1	1	0, 1
Golden	8	3	5	0.5, 0.48
Sparwood	7	3	4	0.143, 0.705
Yoho	5	2	3	0.2, 0.655
Cluster Rocky	43	15	28	3.93, 0.047*
Fairview	15	9	6	0.6, 0.439
Fox Creek	21	12	9	0.429, 0.512
Grande Prairies	29	19	10	2.793, 0.09
Kakwa	22	11	11	0, 1
Tumbler Ridge	26	16	10	1.385, 0.239
Valemount	7	4	3	0.143, 0.705
Cluster North	120	71	49	4.033, 0.045*
Total	163	86	77	0.497, 0.48

MAT, mating type.

and the 5' end flanking sequence, could have become integrated into the ancestral MAT1-2 idiomorph during the crossover in sexual reproduction (Figure 7). Afterward the α -box domain had been deleted over evolutionary time (Figure 7).

Unequal recombination at the MAT locus is not unique to members of *Grosmannia* and *Ophiostoma*. This event has clearly happened many times, and its footprints have been demonstrated in other ascomycete species (Yokoyama *et al.* 2003; Paoletti *et al.* 2005b; Seidl *et al.* 2009; Amselem *et al.* 2011; Wilken *et al.* 2012) (Figure 5). Fragments of the MAT1-1-1 and MAT1-1-3 genes were reported in 10 isolates of *O. quercus* that contained the full, complete MAT1-2-1 gene in their MAT1-2 idiomorphs (Wilken *et al.* 2012). Similarly, truncated MAT1-1-1 genes were identified in the MAT1-2 idiomorphs of at least five *Phialocephala* species (Zaffarano *et al.* 2010) and the one in *Hypocrea jecorina* (Seidl *et al.* 2009). In contrast, a partial

MAT1-2-1 sequence was found in the MAT1-1 idiomorph of *Aspergillus fumigatus* (Paoletti *et al.* 2005b). Also fragments of homologous MAT1-2-1 and MAT1-1-1 genes were detected bordering the mating-type idiomorphs in *Botrytis cinerea* isolates (Amselem *et al.* 2011).

Recombination is supposed to be suppressed and rare at the MAT locus in ascomycetes (Idnurm 2011), but recombination or crossover events have been reported. Homologs of MAT1-1-2 and MAT1-1-3 also were reported in the MAT1-2 idiomorph of *Diaporthe W-* and *G-* type species, possibly due to recombination of idiomorphs (Kanematsu *et al.* 2007). The MAT1-2-2 gene in the MAT1-2 idiomorph of *Magnaporthe oryzae* was partially homologous to the MAT1-1-3 gene in opposite mating-types (Kanamori *et al.* 2007). Recombination breakpoints and unequal crossover events have been revealed in the MAT loci of *Neurospora*, *Cochliobolus*, *Stemphylium*, *Ascochyta* and *Phoma* during the comparison of MAT idiomorphs between

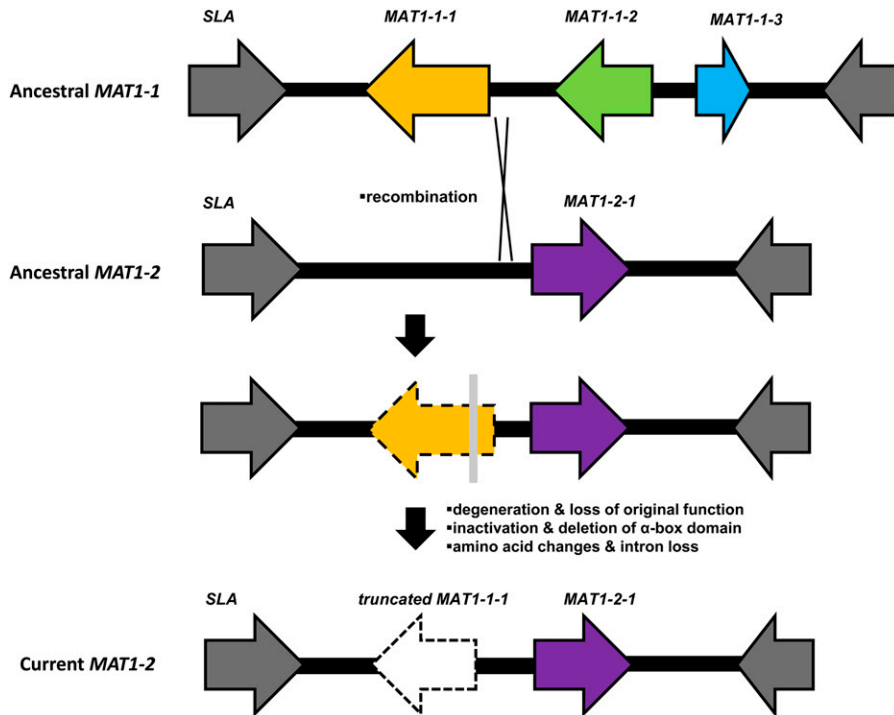


Figure 7 Proposed model for the evolution of MAT locus in the common ancestor of *Grosmannia* and *Ophiostoma* (Ophiostomatales).

heterothallic to homothallic representatives (Yun *et al.* 1999; Inderbitzin *et al.* 2005; Gioti *et al.* 2012; Woudenberg *et al.* 2012).

Acquisition of *MAT* genes by transposition has been independently reported in several ascomycetes (Rydholm *et al.* 2007; Poggeler *et al.* 2011; Gioti *et al.* 2012). Therefore, the intronless *MAT1-1-1* in *MAT1-2* idiomorph may have arisen by retrotransposition from the *MAT1-1-1* cDNA from the ancestral *MAT1-1* idiomorph, but the *MAT* loci do not contain transposon-related and repetitive sequences. Interspecific introgression of *MAT1-1-1* gene and vegetative incompatibility genes from *Ophiostoma ulmi* into *O. novo-ulmi* has been proposed (Paoletti *et al.* 2006). Introgression or non-random acquisition of *MAT* genes was also demonstrated in the evolutionary histories among multiple *Neurospora* species (Menkis *et al.* 2010; Strandberg *et al.* 2010). However, the molecular data do not support introgression to account for the presence of the truncated *MAT1-1-1* gene because the gene genealogies of *MAT* and flanking genes do not contradict the species phylogeny of *Grosmannia* and *Ophiostoma* known from the housekeeping genes (Lim *et al.* 2004), suggesting all these genes shared the same evolutionary history.

The occurrence of truncated mating-type genes in opposite *MAT* idiomorphs may suggest a common homothallic ancestor carrying a complete set of *MAT* genes, for instance all *MAT1-1-1*, *MAT1-1-2*, *MAT1-1-3*, and *MAT1-2-1* located at a single locus in the same order as *Sordaria macrospora* [Figure 15.2 in (Debuchy and Turgeon 2006)]. The *MAT1-1* and *MAT1-2* idiomorphs could have arisen from the loss of HMG and α -box domain sequences as a result of multiple translocation breaks and segregations (Paoletti *et al.* 2005b). This scenario had been proposed to explain the *MAT* locus evolution in *Cordyceps takamontana* (Yokoyama *et al.* 2003), members of *Botrytis* and *Sclerotium* (Amselem *et al.* 2011), as well as the *Aspergilli* (Galagan *et al.* 2005; Paoletti *et al.* 2005b). However, this model of evolution is very unlikely based on the criterion of parsimony. Also *G. clavigera* and related fungi have syntenic order of *MAT* genes and may share a common heterothallic ancestor within the Sordariomycetes as discussed above.

Deletion of the α -box domain due to evolutionary degeneration of *MAT1-1-1* genes

The deletion/removal of the α -box domain in the truncated *MAT1-1-1* gene may have been selected to avoid universal compatibility or haploid selfing (self-fertility) that involves no sexual recombination in reproduction (Billiard *et al.* 2011, 2012). In fact, the expression of additional α -box domain may interfere or compete with the signal from the “resident/ original” HMG domain at the same locus (Coppin *et al.* 1997), therefore the “additional” *MAT1-1-1* gene may have been “inactivated” for functions in mating (Coppin *et al.* 1997) after the integration into the *MAT* locus as a result of unequal recombination. Under laboratory conditions, artificial association of both mating-type loci in the same nucleus of a heterothallic *Neurospora crassa* isolate led to inhibition of growth and the formation of barren perithecia in crosses with a tester (Perkins 1972). Transgenic dual maters (carrying genes of both mating-types) were also unable to produce progeny in isolates of *N. crassa* (Glass *et al.* 1990), *Podospora anserina* (Coppin and Debuchy 2000) and *Cochliobolus heterostrophus* (Turgeon *et al.* 1993).

In the absence of purifying selection, genes that have lost their original functions accumulate mutations and degenerate to become pseudogenes. Our data illustrated that the truncated *MAT1-1-1* gene in *O. montium* is highly eroded (31% in length compared with its ‘full length’ homolog) and could be a pseudogene. Similarly, the truncated *MAT1-1-1* gene reported in *Cordyceps takamontana* (known as *Isaria tenuipes*) was a pseudogene with accumulated mutations and stop codons (Yokoyama *et al.* 2005). The 3’-end of the *MAT1-1-1* gene in the *MAT1-2* idiomorph of *H. jecorina* was also considered to be nonfunctional because the flanking region contained multiple stop codons with no translational start point detected (Seidl *et al.* 2009). Also, the duplicated homeodomain transcription factors at *A* mating-type locus in *Coprinopsis cinerea* (Basidiomycota) were deleted and inactivated progressively (Kues *et al.* 2012). The *MAT* locus in yeasts was considered a “deletion hotspot” with a continued process of evolutionary deletions, gene truncation and transpositions on chromosomal

genes located beside the *MAT* locus after the mating-type switching event (Gordon *et al.* 2011).

The truncated *MAT1-1-1* genes in *G. clavigera* and relatives could have lost their original function in sexual reproduction but the degree of degeneration is not the same as the homolog in *O. montium*. However, these genes do not contain any stop codons and introns. The CODMEL tests indicated purifying selection at the inter-specific level due to accelerated rate of amino acid changes. The deletion of the α -box domain in the truncated *MAT1-1-1* genes also did not prevent its expression as it has already been demonstrated in *Magnaporthe oryzae* (Kanamori *et al.* 2007). It is possible that the truncated genes have evolved new functions through adaptive evolution because the organization has been maintained in the entire phylogenetic clade. In contrast, the 3'-terminal truncated *SXI1 α* gene at the *MAT* locus of *Cryptococcus neoformans* serotype-AD hybrid (Basidiomycota) is still functional in sexual reproduction and may even promote cell fusion (Lin *et al.* 2007). Additional in-depth molecular genetics studies and experiments are necessary to elucidate the possible biological functions of the truncated *MAT1-1-1* gene.

Implications for the mating strategies and breeding systems in fungi

Fungi within the Ophiostomatales have complex mating behavior that range from strict outcrossing (heterothallism) to haploid-selfing (homothallism) (Gorton and Webber 2000; Carlier *et al.* 2006). Also, *Ophiostoma ulmi* had been thought to perform 'pseudoselfing' by a process involved in mutation at the *MAT* locus or introgressed *MAT* genes that led to a mating-type switch (Brasier and Gibbs 1975). Our results reflected that most members in *Grosmannia* are heterothallic in genetic makeup and they require a partner (outcrossing) to produce perithecia in life histories. These molecular data are largely congruent to the classical data from pairing-cultures, except that *G. robusta* was reported to produce perithecia readily in culture without pairing cultures (Jacobs and Wingfield 2001). Also evidence of incongruence between molecular data and classical data were reported in *O. quercus*, as *MAT1-2-1* genes appeared to be present in both mating partners that are able to cross (Wilken *et al.* 2012). Previous phylogenetic data demonstrated that homothallism has evolved multiple times independently from within heterothallic ascomycetes (Yun *et al.* 1999; Strandberg *et al.* 2010; Billiard *et al.* 2011). Further characterization of the *MAT* loci from selfing species in Ophiostomatales based on classical mating studies could verify if homothallic members have been derived from a heterothallic ancestor, infer the phylogenetic relationships between the *MAT* locus organizations and reveal the mechanisms underlying the lifestyle changes.

Heterothallic (outcrossing) fungi gain benefits from recombination by increased genetic diversity and repaired mutation (Heitman *et al.* 2007). The presence of both mating-type isolates in *G. clavigera* at different spatial scales is consistent with high levels of genotypic diversity found in this fungus (Tsui *et al.* 2012). The finding of linkage equilibrium among microsatellite markers further indicated that sexual reproduction is a major factor influencing the population genetic structure and epidemiology of *G. clavigera* (Tsui *et al.* 2012). If *G. clavigera* undergoes a sexual cycle regularly, the ascospores and ascogonia should be discovered without difficulty. It was proposed that the inability to find the ascogonia in nature is due to the inappropriate sampling methodology, or collecting plant material at the wrong stage in the life cycle (Sommerhalder *et al.* 2006). Unfortunately, several attempts to cross complement isolates *in vitro* proved unsuccessful. Other possible explanations may be mutations in genes regulating the

sexual development or environmental factors that reduce ascogonia formation (Bennett *et al.* 2003).

Finally, our results revealed the presence of homologous *MAT* genes in *Llo*, *Lt*, *Lw*, and *Llun*, which have long been considered to be asexual (Jacobs and Wingfield 2001). We also found 1:1 mating-type ratio in *L. longiclavatum* populations. Evidence of purifying selection on the *MAT* genes at the inter-specific level indicated that sexual reproduction is important in nature or occurs regularly (López-Villavicencio *et al.* 2010). Our data showed that these fungi previously deemed asexual have the potential to reproduce sexually, as was demonstrated for other asexual fungi such as *Penicillium*, *Aspergillus*, and *Fusarium* (Butler 2007; Ropars *et al.* 2012). This ability potentially increases genetic variability and can enhance fitness of fungal pathogens in new, ecological niches (Coppin *et al.* 1997).

ACKNOWLEDGMENTS

We are grateful to the associate editor and the anonymous reviewers for their comments on the submitted manuscript. We acknowledge Paul Dyer and Carly Eagle (University of Nottingham, UK) for technical advice on the long-range PCR experiment; Tatiana Giraud, Evelyne Coppin, and Robert Debuchy (Université Paris-Sud, France); Colette Breuil, Jim Kronstad, and Mary Berbee (University of British Columbia, Canada) for advice and discussion on experimental design and data analyses. We are also grateful to Amanda Roe, Adrienne Rice, Felix Sperling, and Janice Cooke (University of Alberta, Canada) for providing additional cultures and DNA samples. We also thank Sepideh Alamouti, H.-J. Chen, Juan Valle, Ben Lai (UBC, Canada), and Forest Health Officers from the Alberta Sustainable Resource Development Fund for technical assistance, as well as Marc-André Rodrigue (Centre de recherche du CHUQ, Québec) for assistance in primer-walking sequencing. Financial assistance for this research was provided by Genome Canada, Genome British Columbia, Genome Alberta, and the Government of Alberta (AAET/AFRI-859-G07) in support of the Tria I and Tria II Projects <<http://www.thetriaproject.ca>>, of which J.B. and R.C.H. are Principal Investigators. Funding was also provided by the Genomic Research and Development Initiative of Natural Resources Canada.

LITERATURE CITED

- Alamouti, S. M., V. Wang, S. DiGiustini, D. Six, J. Bohlmann *et al.*, 2011 Gene genealogies reveal cryptic species and host preferences for the pine fungal pathogen *Grosmannia clavigera*. *Mol. Ecol.* 12: 2581–2602.
- Amselem, J., C. A. Cuomo, J. A. van Kan, M. Viaud, E. P. Benito *et al.*, 2011 Genomic analysis of the necrotrophic fungal pathogens *Sclerotinia sclerotiorum* and *Botrytis cinerea*. *PLoS Genet.* 7: e1002230.
- Bennett, R. S., S. Yun, T. Y. Lee, B. G. Turgeon, E. Arseniuk *et al.*, 2003 Identity and conservation of mating type genes in geographically diverse isolates of *Phaeosphaeria nodorum*. *Fungal Genet. Biol.* 40: 25–37.
- Billiard, S., M. López-Villavicencio, B. Devier, M. E. Hood, C. Fairhead *et al.*, 2011 Having sex, yes, but with whom? Inferences from fungi on the evolution of anisogamy and mating types. *Biol. Rev. Camb. Philos. Soc.* 86: 421–442.
- Billiard, S., M. Lopez-Villavicencio, M. E. Hood, and T. Giraud, 2012 Sex, outcrossing and mating types: unsolved questions in fungi and beyond. *J. Evol. Biol.* 25: 1020–1038.
- Brasier, C. M., and J. N. Gibbs, 1975 Highly fertile form of the aggressive strain of *Ceratocystis ulmi*. *Nature* 257: 128–131.
- Butler, G., 2007 The evolution of *MAT*: the ascomycetes, pp. 3–18 in *Sex in Fungi: Molecular Determination and Evolutionary Implications*, edited by J. Heitman, J. W. Kronstad, J. W. Taylor, and L. A. Casselton. ASM Press, Washington, DC.
- Carlier, F.-X., C. Decock, K. Jacobs, and H. Maraité, 2006 *Ophiostoma arduennense* sp. nov. (Ophiostomatales, Ascomycota) from *Fagus sylvatica* in southern Belgium. *Mycol. Res.* 110: 801–810.

- Coppin, E., R. Debuchy, S. Arnaise, and M. Picard, 1997 Mating types and sexual development in filamentous ascomycetes. *Microbiol. Mol. Biol. Rev.* 61: 411–428.
- Coppin, E., and R. Debuchy, 2000 Co-expression of the mating-type genes involved in internuclear recognition is lethal in *Podospora anserina*. *Genetics* 155: 657–669.
- Debuchy, R., and B. G. Turgeon, 2006 Mating-type structure, function, and evolution in Euscomycetes, pp. 293–323 in *The Mycota I Growth, Differentiation, and Sexuality*, edited by U. Kues, and R. Fischer. Springer-Verlag, Berlin, Heidelberg.
- Debuchy, R., V. Berteaux-Lecellier, and P. Silar, 2010 Mating systems and sexual morphogenesis in ascomycetes, pp. 501–535 in *Cellular and Molecular Biology of Filamentous Fungi*, edited by K. A. Borkovich, and D. J. Ebbole. American Society for Microbiology Press, Washington, DC.
- Dereeper, A., V. Guignon, G. Blanc, S. Audic, S. Buffet *et al.*, 2008 Phylogeny.fr: robust phylogenetic analysis for the non-specialist. *Nucleic Acids Res.* 36: W465–W469.
- Devier, B., G. Aguilera, M. E. Hood, and T. Giraud, 2009 Ancient trans-specific polymorphism at pheromone receptor genes in Basidiomycetes. *Genetics* 181: 209–223.
- DiGuistini, S., Y. Wang, N. Y. Liao, G. Taylor, P. Tanguay *et al.*, 2011 Genome and transcriptome analyses of the mountain pine beetle-fungal symbiont *Grosmannia clavigera*. *Proc. Natl. Acad. Sci. USA* 108: 2504–2509.
- Farfan, L., C. K. M. Tsui, Y. A. El-Kassaby, and R. C. Hamelin, 2011 Population genetic analysis of *Leptographium longiclavatum* a pathogen associate with the mountain pine beetle *Dendroctonus ponderosae*. *Phytopathology* 101: S51.
- Felsenstein, J., 2005 *PHYLIP (Phylogeny Inference Package), version 3.6a3*. Department of Genome Science. University of Washington, Seattle, WA.
- Fraser, J. A., J. E. Stajich, E. J. Tarcha, G. T. Cole, D. O. Inglis *et al.*, 2007 Evolution of the mating type locus: Insights gained from the dimorphic primary fungal pathogens *Histoplasma capsulatum*, *Coccidioides immitis*, and *Coccidioides posadasii*. *Eukaryot. Cell* 6: 622–629.
- Galagan, J. E., S. E. Calvo, C. Cuomo, L. J. Ma, J. R. Wortman *et al.*, 2005 Sequencing of *Aspergillus nidulans* and comparative analysis with *A. fumigatus* and *A. oryzae*. *Nature* 438: 1105–1115.
- Gioti, A., A. A. Mushegian, R. Strandberg, J. E. Stajich, and H. Johannesson, 2012 Unidirectional evolutionary transitions in fungal mating systems and the role of transposable elements. *Mol. Biol. Evol.* 29: 3215–3226.
- Glass, N. L., J. Grotelueschen, and R. L. Metzberg, 1990 *Neurospora crassa* A mating-type region. *Proc. Natl. Acad. Sci. USA* 87: 4912–4916.
- Gordon, J. L., D. Armisen, E. Proux-Wéra, S. S. Óhéigeartaigh, K. P. Byrne *et al.*, 2011 Evolutionary erosion of yeast sex chromosomes by mating-type switching accidents. *Proc. Natl. Acad. Sci. USA* 108: 20024–20029.
- Gorton, C., and J. F. Webber, 2000 Reevaluation of the status of the bluestain fungus and bark beetle associate *Ophiostoma minus*. *Mycologia* 92: 1071–1079.
- Heitman, J., J. W. Kronstad, J. W. Taylor, and L. A. Casselton (Editors), 2007 *Sex in Fungi: Molecular Determination and Evolutionary Implications*. ASM Press, Washington, DC.
- Idnurm, A., 2011 Sex and speciation: The paradox that non-recombining DNA promotes recombination. *Fungal Biol. Rev.* 25: 121–127.
- Inderbitzin, P., J. Harkness, B. G. Turgeon, and M. L. Berbee, 2005 Lateral transfer of mating system in *Stemphylium*. *Proc. Natl. Acad. Sci. USA* 102: 11390–11395.
- Jacobi, V., J. Dufour, G. F. Bouvet, M. Aoun, and L. Bernier, 2010 Identification of transcripts up-regulated in asexual and sexual fruiting bodies of the Dutch elm disease pathogen *Ophiostoma novo-ulmi*. *Can. J. Microbiol.* 58: 697–705.
- Jacobs, K., and M. J. Wingfield, 2001 *Leptographium Species: Tree Pathogens, Insect Associates, and Agents of Blue-Stain*. American Phytopathological Society Press, St. Paul, MN.
- Joly, D. L., N. Feau, P. Tanguay, and R. C. Hamelin, 2010 Comparative analysis of secreted protein evolution using expressed sequence tags from four poplar leaf rusts (*Melampsora* spp.). *BMC Genomics* 11: 422.
- Kanamori, M., H. Kato, N. Yasuda, S. Koizumi, T. L. Peever *et al.*, 2007 Novel mating type-dependent transcripts at the mating type locus in *Magnaporthe oryzae*. *Gene* 403: 6–17.
- Kanematsu, S., Y. Adachi, and T. Ito, 2007 Mating-type loci of heterothallic *Diaporthe* spp.: homologous genes are present in opposite mating-types. *Curr. Genet.* 52: 11–22.
- Kues, U., Y.-D. Yu, and M. Navarro-Gonzalez, 2012 A mating loci in *Coprinospora cinerea* differ in numbers of homeodomain transcription factor genes, p. 37 in Abstract Book of 11th European Conference on Fungal Genetics, Marburg, Germany.
- Kurz, W. A., C. C. Dymond, G. Stinson, G. J. Rampley, E. T. Neilson *et al.*, 2008 Mountain pine beetle and forest carbon feedback to climate change. *Nature* 452: 987–990.
- Lee, S., J. Kim, and C. Breuil, 2005 *Leptographium longiclavatum* sp. nov., a new species associated with the mountain pine beetle, *Dendroctonus ponderosae*. *Mycol. Res.* 109: 1162–1170.
- Lee, S., R. C. Hamelin, D. L. Six, and C. Breuil, 2007 Genetic diversity and the presence of two distinct groups in *Ophiostoma clavigerum* associated with *Dendroctonus ponderosae* in British Columbia and the Northern Rocky Mountains. *Phytopathology* 97: 1177–1185.
- Lim, Y. W., S. M. Alamouti, J. Kim, S. Lee, and C. Breuil, 2004 Multigene phylogenies of *Ophiostoma clavigerum* and closely related species from bark beetle-attacked *Pinus* in North America. *FEMS Microbiol. Lett.* 237: 89–96.
- Lin, X., A. P. Litvintseva, K. Nielsen, S. Patel, A. Floyd *et al.*, 2007 alpha AD alpha hybrids of *Cryptococcus neoformans*: evidence of same-sex mating in nature and hybrid fitness. *PLoS Genet.* 3: 1975–1990.
- López-Villavicencio, M., G. Aguilera, T. Giraud, D. M. de Vienne, S. Lacoste *et al.*, 2010 Sex in *Penicillium*: Combined phylogenetic and experimental approaches. *Fungal Genet. Biol.* 47: 693–706.
- Menkis, A., C. A. Whittle, and H. Johannesson, 2010 Gene genealogies indicate abundant gene conversions and independent evolutionary histories of the mating-type chromosomes in the evolutionary history of *Neurospora tetrasperma*. *BMC Evol. Biol.* 10: 234.
- Metzberg, R. L., and N. L. Glass, 1990 Mating type and mating strategies in *Neurospora*. *Bioessays* 12: 53–59.
- Nauta, M. J., and H. F. Hoekstra, 1992 Evolution of reproductive systems in filamentous ascomycetes. I. Evolution of mating types. *Evolution* 68: 405–410.
- Nygren, K., R. Strandberg, A. Wallberg, B. Nabholz, T. Gustafsson *et al.*, 2011 A comprehensive phylogeny of *Neurospora* reveals a link between reproductive mode and molecular evolution in fungi. *Mol. Phylogenet. Evol.* 59: 649–663.
- Paoletti, M., K. W. Buck, and C. M. Brasier, 2005a Cloning and sequence analysis of the *MAT-B (MAT-2)* genes from the three Dutch elm disease pathogens, *Ophiostoma ulmi*. *Mycol. Res.* 109: 983–991.
- Paoletti, M., C. Rydholm, E. U. Schwier, M. J. Anderson, G. Szakacs *et al.*, 2005b Evidence for sexuality in the opportunistic fungal pathogen *Aspergillus fumigatus*. *Curr. Biol.* 15: 1242–1248.
- Paoletti, M., K. W. Buck, and C. M. Brasier, 2006 Selective acquisition of novel mating type and vegetative incompatibility genes via interspecies gene transfer in the globally invading eukaryote *Ophiostoma novo-ulmi*. *Mol. Ecol.* 15: 249–262.
- Perkins, D. D., 1972 An insertional translocation in *Neurospora* that generates duplications heterozygous for mating type. *Genetics* 71: 25–51.
- Poggeler, S., C. M. O’Gorman, B. Hoff, and U. Kuck, 2011 Molecular organization of the mating-type loci in the homothallic Ascomycete *Eupeenicillium crustaceum*. *Fungal Biol.* 115: 615–624.
- Posada, D., 2006 ModelTest Server: a web-based tool for the statistical selection of models of nucleotide substitution online. *Nucleic Acids Res.* 34: W700–S703.
- Rambaut, A., 1999 Se-AL: Sequence Alignment Editor. Available at: <<http://evolve.zoo.ox.ac.uk/>>. Accessed: January 15, 2013.
- Roe, A., S. V. Rice, D. W. Coltman, J. E. K. Cooke, and F. A. H. Sperling, 2011 Comparative phylogeography, genetic differentiation and contrasting reproductive modes in three fungal symbionts of a multipartite bark beetle symbiosis. *Mol. Ecol.* 20: 584–600.
- Ropars, J., J. Dupont, E. Fontanillas, R. C. Rodríguez de la Vega, F. Malagnac *et al.*, 2012 Sex in cheese: evidence for sexuality in the fungus *Penicillium roqueforti*. *PLoS ONE* 7: e49665.

- Rutherford, K., J. Parkhil, J. Crook, T. Horsnell, and P. Rice, 2000 Artemis: sequence visualization and annotation. *Bioinformatics* 16: 944–945.
- Rydholm, C., P. S. Dyer, and F. Lutzoni, 2007 DNA sequence characterization and molecular evolution of *MAT1* and *MAT2* mating-type loci of the self-compatible ascomycete mold *Neosartorya fischeri*. *Eukaryot. Cell* 6: 868–874.
- Safranyik, L., A. L. Carroll, J. Régnière, D. W. Langor, W. G. Riel *et al.*, 2010 Potential for range expansion of mountain pine beetle into the boreal forest of North America. *Canadian Entomologist* 142: 415–442.
- Seidl, V., C. Seibel, C. P. Kubicek, and M. Schmoll, 2009 Sexual development in the industrial workhorse *Trichoderma reesei*. *Proc. Natl. Acad. Sci. USA* 106: 13909–13914.
- Solheim, H., and P. Krokene, 1998 Growth and virulence of mountain pine beetle associated blue-stain fungi, *Ophiostoma clavigerum* and *Ophiostoma montium*. *Can. J. Bot.* 76: 561–566.
- Sommerhalder, R. J., B. A. McDonald, and J. Zhan, 2006 The frequencies and spatial distribution of mating types in *Stagonospora nodorum* are consistent with recurring sexual reproduction. *Phytopathology* 96: 234–239.
- Spanu, P. D., J. C. Abbott, J. Amselem, T. A. Burgis, D. M. Soanes *et al.*, 2010 Genome expansion and gene loss in powdery mildew fungi reveal tradeoffs in extreme parasitism. *Science* 330: 1543–1546.
- Staden, R., 1996 The Staden sequence analysis package. *Mol. Biotechnol.* 5: 233–241.
- Strandberg, R., K. Nygren, A. Menkis, T. Y. James, L. Wik, J. E. Stajich *et al.*, 2010 Conflict between reproductive gene trees and species phylogeny among heterothallic and pseudohomothallic members of the filamentous ascomycete genus *Neurospora*. *Fungal Genet. Biol.* 47: 869–878.
- Swofford, D. L., 2003 *PAUP**. *Phylogenetic Analysis Using Parsimony (*and Other Methods)*. Sinauer Associates, Sunderland, MA.
- Tamura, K., D. Peterson, N. Peterson, G. Stecher, M. Nei *et al.*, 2011 MEGA5: molecular evolutionary genetics analysis using maximum likelihood, evolutionary distance, and maximum parsimony methods. *Mol. Biol. Evol.* 28: 2731–2739.
- Thompson, J. D., T. J. Gibson, F. Plewniak, F. Jeanmougin, and D. G. Higgins, 1997 The CLUSTAL_X windows interface: flexible strategies for multiple sequence alignment aided by quality analysis tools. *Nucleic Acids Res.* 25: 4876–4882.
- Tsui, C. K. M., A. D. Roe, Y. A. El-Kassaby, A. V. Rice, S. M. Alamounti *et al.*, 2012 Population structure and migration pattern of a conifer pathogen, *Grosmannia clavigera*, as influenced by its symbiont, the mountain pine beetle. *Mol. Ecol.* 21: 71–86.
- Turgeon, B. G., and O. C. Yoder, 2000 Proposed nomenclature for Mating type genes of filamentous ascomycetes. *Fungal Genet. Biol.* 31: 1–5.
- Turgeon, B. G., H. Bohlmann, L. M. Ciuffetti, S. K. Christiansen, G. Yang *et al.*, 1993 Cloning and analysis of the mating type genes from *Cochliobolus heterostrophus*. *Mol. Gen. Genet.* 238: 270–284.
- Wilken, P. M., E. T. Steenkamp, T. A. Hall, Z. W. de Beer, M. J. Wingfield *et al.*, 2012 Both mating types in the heterothallic fungus *Ophiostoma quercus* contain *MAT1-1* and *MAT1-2* genes. *Fungal Biol.* 116: 427–437.
- Woudenberg, J. H. C., J. de Gruyter, P. W. Crous, and L. H. Zwieters, 2012 Analysis of the mating-type loci of co-occurring and phylogenetically related species of *Ascochyta* and *Phoma*. *Mol. Plant Pathol.* 13: 350–362.
- Yamaoka, Y., Y. Hiratsuka, and P. J. Maruyama, 1995 The ability of *Ophiostoma clavigerum* to kill mature lodgepole-pine trees. *Eur. J. Forest Pathol.* 25: 401–404.
- Yang, Z., 2007 PAML 4: phylogenetic analysis by maximum likelihood. *Mol. Biol. Evol.* 24: 1586–1591.
- Yokoyama, E., K. Yamagishi, A. Hara, E. Yokoyama, K. Yamagishi *et al.*, 2003 Structures of the mating-type loci of *Cordyceps takaomontana*. *Appl. Environ. Microbiol.* 69: 5019–5022.
- Yokoyama, E., K. Yamagishi, and A. Hara, 2005 Heterothallism in *Cordyceps takaomontana*. *FEMS Microbiol. Lett.* 250: 145–150.
- Yun, S. H., M. L. Berbee, O. C. Yoder, and B. G. Turgeon, 1999 Evolution of the fungal self-fertile reproductive life style from self-sterile ancestors. *Proc. Natl. Acad. Sci. USA* 96: 5592–5597.
- Zaffarano, P. L., A. Duò, and C. R. Grünig, 2010 Characterization of the mating-type (MAT) locus in the *Phialocephala fortinii* s. l. – *Acephala applanata* species complex. *Fungal Genet. Biol.* 47: 761–772.
- Zipfel, R. D., Z. W. de Beer, K. Jacobs, B. D. Wingfield, and M. J. Wingfield, 2006 Multi-gene phylogeny define *Ceratocystiopsis* and *Grosmannia* distinct from *Ophiostoma*. *Stud. Mycol.* 55: 75–97.

Communicating editor: J. H. McCusker