

datasummit.library.ualberta.ca

University of Alberta  
Campus Data Summit  
March 22-23 2012

Please join our Survey on  
Data Sharing & Management.  
The highlights will be shared  
at the Data Summit.








**Research Data Management and Stewardship**

Data are the lifeblood of research. Whether the product of observation, experimentation or simulation, data are the evidence upon which research is conducted. Given the long-standing importance of data to research, it has only been in the past few years that attention has been expressed about the treatment of data. For one thing, data are increasingly being viewed and managed as an asset of research, especially because of the substantial public investments now being made in the production of high-quality data. Rarely are data now looked upon as something to be discarded at the end of a project. As an asset, however, data need some form of stewardship to ensure their long-term preservation and usability.

March 23, 2012

**Polar Research, Data Management and Archiving** (ECHA 2-490)



9:00 - 9:30 Polar Data Commons: national infrastructure to support international research (*Dave Carlson*)

9:30 - 10:00 Inuit Tapiriit Kanatami: working with Inuit communities to preserve their data (*Scot Nickels*)


10:00 - 10:15 Open Data: legal and conceptual issues (*Tania Bubela*)

10:15 - 10:30 Data Assembly Centre Network Infrastructure: making it all work (*Lindsay Johnston*)

10:30 - 10:45 Sanity Break

10:45 - 11:30 Panel: Coordinating Northern Research Data Practices and Infrastructure  
*David Hik, David Carlson, Scot Nickels, Tania Bubela, Chuck Humphrey*

11:30 - 12:00 University Service & Academic Unit Responses  
*Susan Babcock* (Research Ethics Office)  
*Lorraine Deydey* (Research Services Office)  
*Cindy Paszkowski* (Associate Chair Research, Biological Sciences)  
AICT, FGSR, and others



**Mapping the Data Landscape:**  
Report of the 2011 Canadian Research Data Summit

December 2011

Produced by the Research Data Strategy Working Group  
<http://rdswg.ualberta.ca/rdswg-report-2011>

**Framework for Action**

- **Researchers** ensure data management standards are taken into account when creating and analyzing research data.
- **Universities** further develop the infrastructure for collecting and preserving research data.
- **Funding agencies** require that funded projects adopt appropriate standards for data management and that data management plans are part of funding applications.
- **Canadian governments** establish policies that make recipients of public research funding accountable for managing research data.

\* Policies  
 \* Infrastructure  
 \* Coordination and Leadership  
 \* Standards and Interoperability

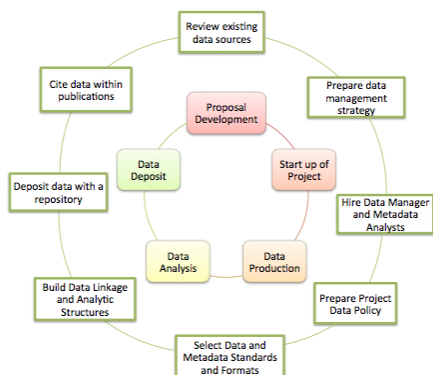
\* Capabilities and Education  
 \* Research Culture  
 \* Funding and Sustainability

**Research Data**

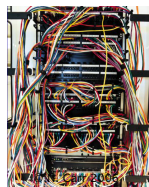
“factual records used as primary sources for research, and that are commonly accepted in the research community as necessary to validate research findings”

Virtually all types of digital information have the potential to be research data but it isn't until this digital content is structured through a methodology or practice for analysis purposes that it specifically becomes research data.

### Research Lifecycle and Data Curation



Common perception of  
data systems

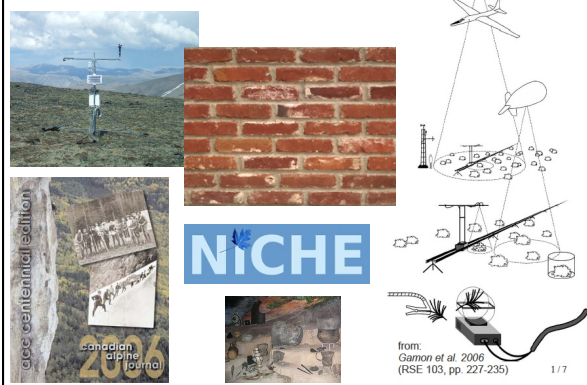


What most people  
want to see

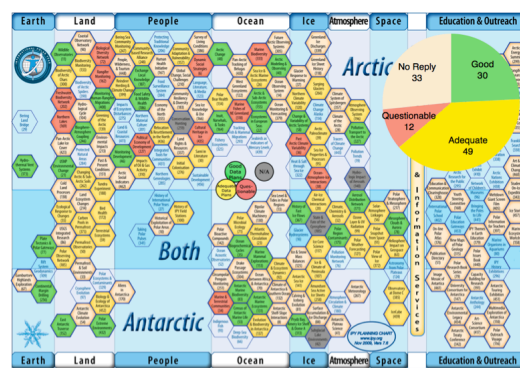


courtesy Mark Parsons

Yesterday: "Data Summit Vingettes"



### The State of Polar Data—the IPY Experience



(as of June 2010)

## The State of Polar Data at the end of IPY

- Data sharing and publication



- Interoperability across systems, data, and standards



- Sustainable preservation and stewardship of diverse data



- Governance and conduct of the virtual organization



*Parsons et al. 2011*

March 23, 2012



**Polar Research, Data Management and Archiving** (ECHA 2-490)

- 9:00 - 9:30 Polar Data Commons: national infrastructure to support international research (*Dave Carlson*)
- 9:30 - 10:00 Inuit Tapiriit Kanatami: working with Inuit communities to preserve their data (*Scot Nickels*)
- 10:00 - 10:15 Open Data: legal and conceptual issues (*Tania Bubela*)
- 10:15 - 10:30 Data Assembly Centre Network Infrastructure: making it all work (*Lindsay Johnston*)
- 10:30 - 10:45 Sanity Break
- 10:45 - 11:30 Panel: Coordinating Northern Research Data Practices and Infrastructure  
*David Hik, David Carlson, Scot Nickels, Tania Bubela, Chuck Humphrey*
- 11:30 - 12:00 University Service & Academic Unit Responses  
*Susan Babcock* (Research Ethics Office)  
*Lorraine Deydey* (Research Services Office)  
*Cindy Paszkowski* (Associate Chair Research, Biological Sciences)  
AICT, FGSR, and others