



2017 Competition Statistics Discovery Grants (DG) and Research Tools and Instruments (RTI) Programs

Welcome to the new NSERC Competition Statistics Package for the Discovery Grants and RTI Programs.

What's New?

- All figures and tables are now based on Discovery Grants Individual and RTI only.
- The data used is from a point-in-time in our corporate database. The date used for this year is March 17th, 2017.
- This package includes additional funding received resulting from Federal Budgets 2014 and 2016.

SECTION 1 – OVERALL STATISTICS	2
<i>Figure 1 Competition Funding, Success Rates, Number of Awards and Average Award 2013-2017</i>	<i>2</i>
<i>Table 1 Overall Comparative Statistics Discovery Grants Competitions, 2013-17</i>	<i>3</i>
<i>Table 2 Number of Applications and Awards by Category of Applicants, 2013-17</i>	<i>3</i>
<i>Table 3 Discovery Grants Competition Results by University (including Affiliated University Research Centers), 2017 Competition</i>	<i>4</i>
<i>Table 4 Statistics by University Size, 2017 Competition</i>	<i>5</i>
<i>Table 5 Success Rate by Category of Applicants and University Size, 2013-17</i>	<i>5</i>
<i>Table 6 Number of Applications by Quality Bins by University Size, 2017 Competition</i>	<i>6</i>
<i>Figure 2 Percentage of Occurrences of Various Combinations of Ratings¹ in Bin K by University Size for the 2017 Competition</i>	<i>7</i>
SECTION 2 – STATISTICS BY EVALUATION GROUP	8
<i>Table 7 Success Rate, Average Grant and Total Amount Awarded by Category of Applicant for Each Evaluation Group, 2017 Competition</i>	<i>8</i>
<i>Figure 3 Distribution of the Percentage of Applications by Quality Bin for Each Evaluation Group, 2017 Competition</i>	<i>10</i>
SECTION 3 – SEX-DISAGGREGATED COMPETITION STATISTICS	16
<i>Table 8 Number of Applicants by Sex and Career Stage, 2017 Competition</i>	<i>16</i>
<i>Table 9 Discovery Grant Success Rate and Average Awarded Amount by Career Stage and Sex, 2017 Competition</i>	<i>16</i>
<i>Table 10 Discovery Grant Success Rate and Average Grant by Applicant Status and Sex, 2017 Competition</i>	<i>16</i>
<i>Table 11 Discovery Grant Success Rate by Sex and Evaluation Group, 2017 Competition</i>	<i>17</i>
SECTION 4 – RESEARCH TOOLS AND INSTRUMENTS	18
<i>Table 12 Overall Comparative Statistics, 2015-2017 Research Tools and Instruments Competitions</i>	<i>18</i>
<i>Table 13 Research Tools and Instruments 2017 Competition Results by Selection Committee</i>	<i>18</i>
APPENDIX 1	19
<i>Figure 4 Change in Grant Level, 2017 Competition</i>	<i>19</i>

SECTION 1 – OVERALL STATISTICS

Figure 1 Competition Funding, Success Rates, Number of Awards and Average Award 2013-2017

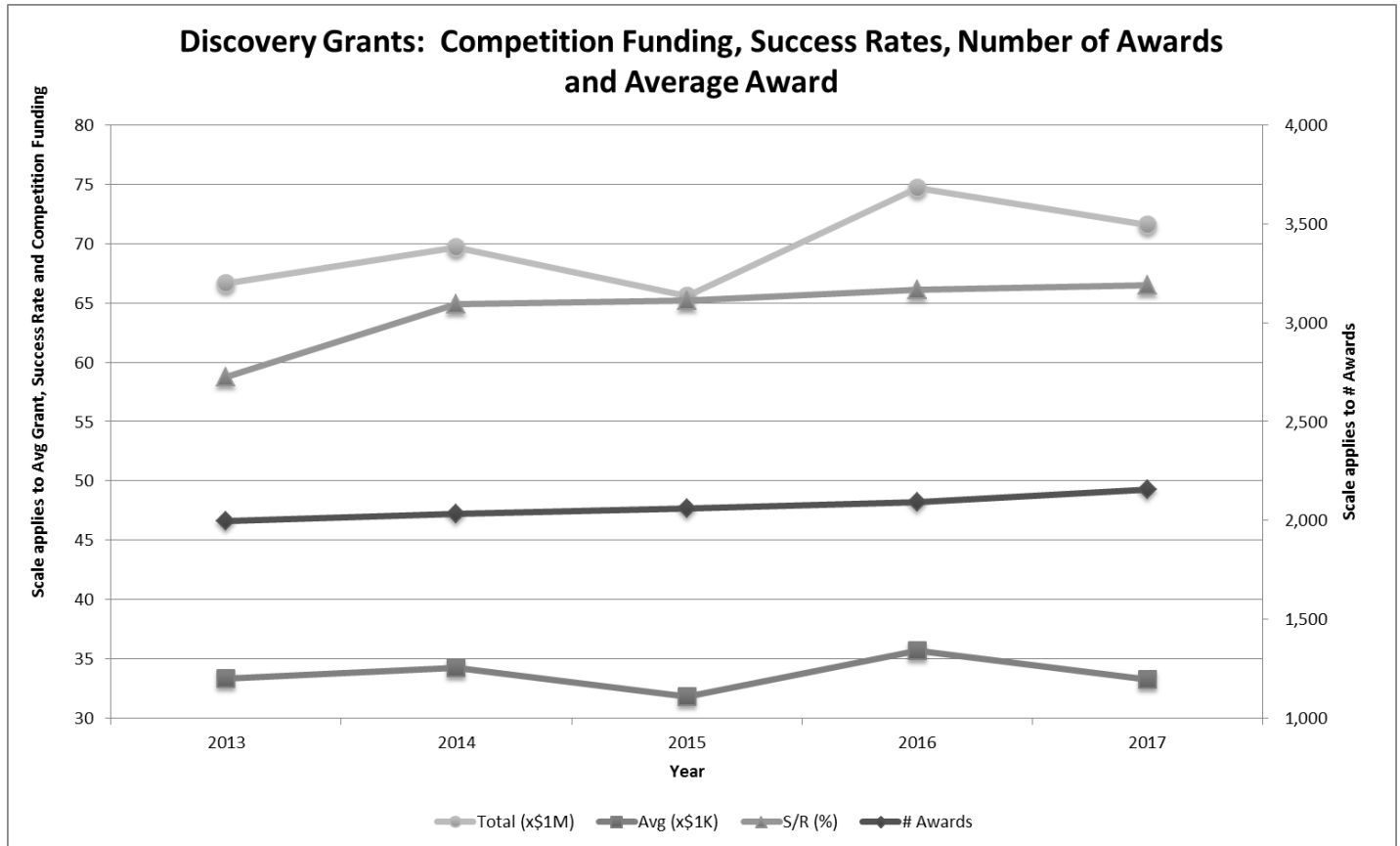


Table 1 Overall Comparative Statistics Discovery Grants Competitions, 2013-17

	2013		2014		2015		2016		2017	
	Success Rate	Average Grant (\$)	Success Rate	Average Grant (\$)	Success Rate	Average Grant (\$)	Success Rate	Average Grant (\$)	Success Rate	Average Grant (\$)
Early Career Researchers (ECR)	60%	\$27,438	70%	\$27,237	65%	\$26,120	75%	\$28,771	69%	\$25,409
Established Researchers (ER)	59%	\$34,323	64%	\$35,477	65%	\$32,903	65%	\$37,138	66%	\$34,948

Table 2 Number of Applications and Awards by Category of Applicants, 2013-17

Competition	Number of Applications				Number of Awards ¹			
	Year	ECR	ER-R	ER-NHG	Total	ECR	ER-R	ER-NHG
2013	471	1,825	1,102	3,398	281	1,382	334	1,997
2014	427	1,647	1,060	3,134	298	1,328	407	2,033
2015	489	1,632	1,038	3,159	317	1,342	400	2,059
2016	494	1,622	1,051	3,167	369	1,333	392	2,094
2017	562	1,636	1,042	3,240	385	1,360	409	2,154

Discovery Grants – Applicant Categories: http://www.nserc-crsng.gc.ca/Professors-Professeurs/Grants-Subs/DGCategories-SDCategories_eng.asp

Table 3 Discovery Grants Competition Results by University (including Affiliated University Research Centers), 2017 Competition

Universities	Early Career Researchers			Established Researchers - Returning			Established Researchers - Not Holding a Grant		
	Success Rate (%)	Total Awarded (\$)	Average Grant (\$)	Success Rate (%)	Total Awarded (\$)	Average Grant (\$)	Success Rate (%)	Total Awarded (\$)	Average Grant (\$)
Acadia University	*	*	*	100%	168,050	33,610	*	*	*
Algoma University	*	*	*	*	*	*	*	*	*
Athabasca University	*	*	*	*	*	*	29%	61,000	30,500
Bishop's University	*	*	*	*	*	*	*	*	*
Brandon University	*	*	*	*	*	*	*	*	*
Brock University	*	*	*	80%	420,000	35,000	50%	90,000	30,000
Cape Breton University	*	*	*	*	*	*	*	*	*
Carleton University	74%	357,501	25,536	81%	776,000	29,846	38%	235,000	26,111
Centre de recherche informatique de Montréal	*	*	*	*	*	*	*	*	*
Centre for Cold Ocean Resources Engineering	*	*	*	*	*	*	*	*	*
Concordia University	53%	202,000	22,444	83%	1,392,400	34,810	32%	199,000	24,875
Dalhousie University	67%	265,000	26,500	82%	1,042,700	32,584	58%	411,000	27,400
École de technologie supérieure	*	*	*	75%	325,000	27,083	27%	70,000	23,333
École Polytechnique de Montréal	88%	172,000	24,571	84%	1,256,000	39,250	20%	40,000	20,000
Grant MacEwan University	*	*	*	*	*	*	*	*	*
HEC Montréal	*	*	*	*	*	*	*	*	*
Institut national de la recherche scientifique	80%	122,000	30,500	70%	251,000	35,857	20%	25,000	25,000
Lakehead University	*	*	*	100%	134,000	26,800	27%	71,000	23,667
Laurentian University	*	*	*	56%	120,000	24,000	17%	43,000	21,500
McGill University	77%	561,000	28,050	89%	4,085,000	42,113	51%	714,800	27,492
McMaster University	86%	311,000	25,917	87%	1,671,658	41,791	18%	118,000	39,333
Memorial University of Newfoundland	79%	342,965	22,864	86%	533,723	29,651	32%	212,000	23,556
Mount Allison University	*	*	*	*	*	*	*	*	*
Mount Royal University	*	*	*	*	*	*	*	*	*
Mount Saint Vincent University	*	*	*	*	*	*	*	*	*
Nipissing University	*	*	*	*	*	*	*	*	*
OCAD University	*	*	*	*	*	*	*	*	*
Queen's University	55%	139,000	23,167	83%	1,195,880	47,835	31%	132,000	26,400
Redeemer University College	*	*	*	*	*	*	*	*	*
Royal Military College of Canada	*	*	*	*	*	*	15%	56,000	28,000
Royal Roads University	*	*	*	*	*	*	*	*	*
Ryerson University	71%	115,000	23,000	80%	673,000	33,650	31%	185,000	23,125
Saint Mary's University	60%	77,000	25,667	*	*	*	*	*	*
Simon Fraser University	*	*	*	80%	1,352,000	37,556	22%	86,000	21,500
St. Francis Xavier University	*	*	*	80%	96,000	24,000	*	*	*
St. Thomas University	*	*	*	*	*	*	*	*	*
Télé-université	*	*	*	*	*	*	*	*	*
The King's University (Edmonton)	*	*	*	*	*	*	*	*	*
The University of British Columbia	74%	456,000	26,824	91%	4,997,200	43,079	57%	817,000	27,233
The University of Western Ontario	64%	234,000	26,000	87%	2,462,800	39,723	33%	423,500	28,233
The University of Winnipeg	*	*	*	33%	64,000	32,000	0%	0	N/A
Thompson Rivers University	60%	69,000	23,000	*	*	*	*	*	*
Trent University	50%	63,000	21,000	86%	175,000	29,167	*	*	*
Trinity Western University	*	*	*	*	*	*	*	*	*
TRIUMF	*	*	*	*	*	*	*	*	*
Université de Moncton	67%	89,000	22,250	*	*	*	20%	47,000	23,500
Université de Montréal	52%	304,000	25,333	91%	1,516,000	36,976	38%	430,000	30,714
Université de Sherbrooke	63%	167,000	33,400	79%	1,018,000	37,704	48%	276,000	25,091
Université du Québec à Chicoutimi	*	*	*	*	*	*	38%	66,000	22,000
Université du Québec à Montréal	88%	156,000	22,286	93%	459,000	35,308	56%	263,000	29,222
Université du Québec à Rimouski	*	*	*	83%	152,000	30,400	*	*	*
Université du Québec à Trois-Rivières	*	*	*	40%	128,000	32,000	38%	121,000	24,200
Université du Québec en Abitibi-Témiscamingue	*	*	*	*	*	*	*	*	*
Université du Québec en Outaouais	*	*	*	*	*	*	*	*	*
Université Laval	85%	292,000	26,545	84%	1,753,600	35,788	31%	292,000	26,545
Université Sainte-Anne	*	*	*	*	*	*	*	*	*
University of Alberta	64%	436,000	24,222	90%	3,012,500	36,738	45%	585,000	26,591
University of Calgary	74%	383,000	27,357	78%	1,884,000	36,231	58%	679,000	26,115
University of Guelph	77%	248,000	24,800	76%	933,000	32,172	52%	404,000	25,250
University of Lethbridge	100%	165,000	27,500	83%	200,100	40,020	22%	67,000	33,500
University of Manitoba	69%	213,000	23,667	83%	1,256,000	32,205	38%	265,000	26,500
University of New Brunswick	50%	76,000	19,000	65%	332,000	30,182	44%	181,000	22,625
University of Northern British Columbia	*	*	*	63%	162,000	32,400	*	*	*
University of Ontario Institute of Technology	*	*	*	50%	214,000	30,571	58%	165,000	23,571
University of Ottawa	74%	459,000	27,000	80%	1,334,000	40,424	39%	482,000	32,133
University of Prince Edward Island	*	*	*	*	*	*	27%	62,000	20,667
University of Regina	33%	50,000	25,000	79%	296,000	26,909	18%	44,000	22,000
University of Saskatchewan	75%	257,000	21,417	77%	1,105,000	36,833	57%	430,000	26,875
University of the Fraser Valley	*	*	*	*	*	*	*	*	*
University of Toronto	73%	1,056,000	27,789	83%	5,326,900	45,143	44%	818,000	29,214
University of Victoria	89%	200,000	25,000	83%	938,380	31,279	50%	130,000	26,000
University of Waterloo	78%	455,000	25,278	94%	3,656,352	36,933	60%	440,000	29,333
University of Windsor	71%	115,000	23,000	78%	518,000	28,778	32%	207,000	25,875
Vancouver Island University	*	*	*	*	*	*	*	*	*
Wilfrid Laurier University	*	*	*	83%	132,000	26,400	*	*	*
York University	88%	353,000	25,214	77%	797,823	29,549	27%	193,355	27,622
Grand Total	69%	9,782,303	25,409	83%	50,859,066	37,396	39%	10,963,655	26,806

* Less than five applications

Table 4 Statistics by University Size, 2017 Competition

Category of Applicants	Data	University Size		
		Large	Medium	Small
Early Career Researchers	Number of Applications	354	111	97
	Number of grants	255	80	50
	Success Rate	72%	72%	52%
	Total Amount	\$6,665,000	\$1,912,466	\$1,204,837
	Average Grant	\$26,137	\$23,906	\$24,097
Established Researchers - Returning	Number of Applications	1248	250	138
	Number of grants	1,069	197	94
	Success Rate	86%	79%	68%
	Total Amount	\$41,796,970	\$6,177,946	\$2,884,150
	Average Grant	\$39,099	\$31,360	\$30,682
Established Researchers - Not Holding a Grant	Number of Applications	648	217	177
	Number of grants	289	72	48
	Success Rate	45%	33%	27%
	Total Amount	\$7,973,300	\$1,813,355	\$1,177,000
	Average Grant	\$27,589	\$25,185	\$24,521

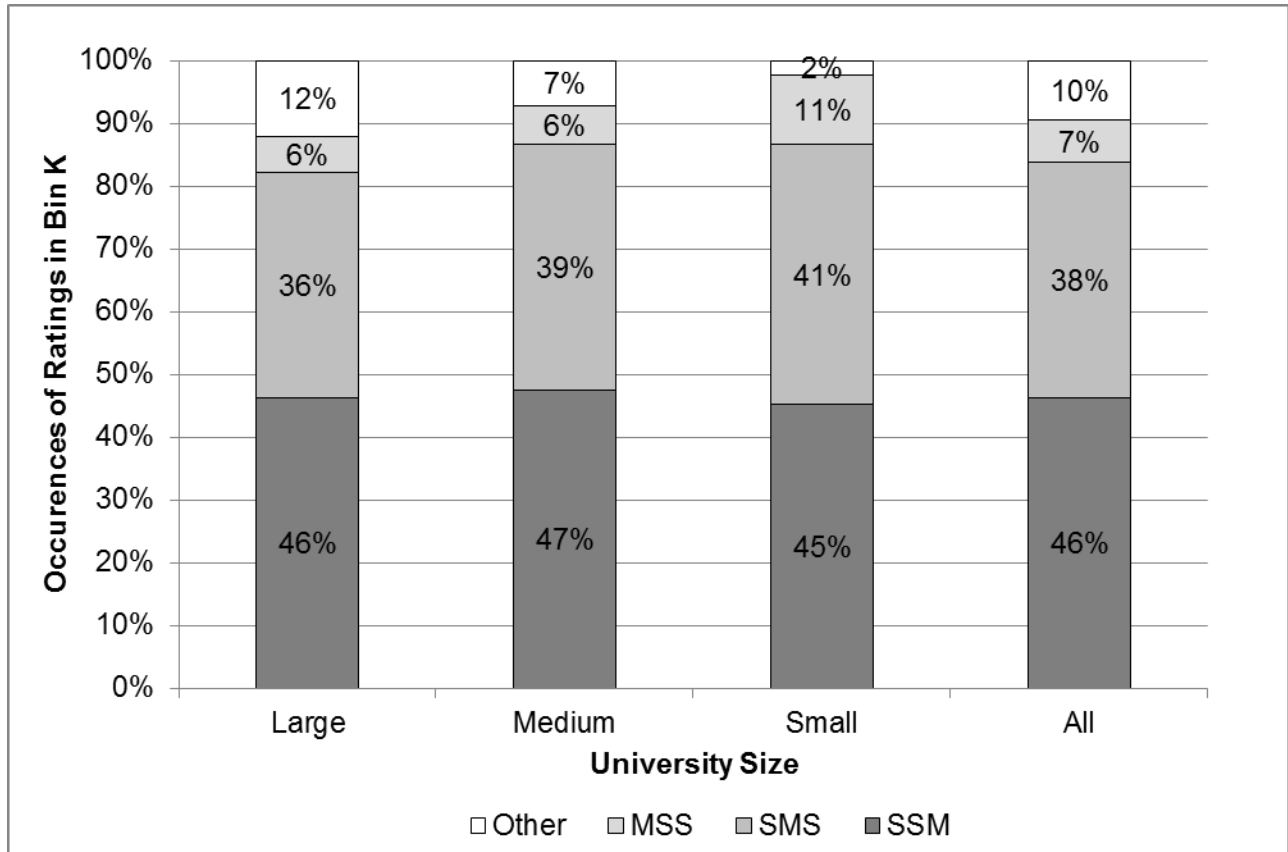
Table 5 Success Rate by Category of Applicants and University Size, 2013-17

	Large					Medium					Small				
	2013	2014	2015	2016	2017	2013	2014	2015	2016	2017	2013	2014	2015	2016	2017
Early Career Researchers	63%	74%	67%	80%	72%	58%	65%	75%	73%	72%	43%	55%	47%	49%	52%
Established Researchers - Returning	80%	84%	85%	85%	86%	69%	76%	75%	77%	79%	57%	64%	72%	66%	68%
Established Researchers - Not Holding a Grant	35%	43%	45%	43%	45%	25%	37%	32%	33%	33%	20%	24%	25%	20%	27%

Table 6 Number of Applications by Quality Bins by University Size, 2017 Competition

Bin	University Size					
	Large		Medium		Small	
	Number	Percentage	Number	Percentage	Number	Percentage
A	4	0.2%	0	0.0%	0	0.0%
B	17	0.8%	0	0.0%	0	0.0%
C	33	1.5%	1	0.2%	1	0.2%
D	59	2.6%	8	1.4%	3	0.7%
E	113	5.0%	11	1.9%	3	0.7%
F	153	6.8%	20	3.5%	6	1.5%
G	210	9.3%	43	7.4%	17	4.1%
H	225	10.0%	48	8.3%	21	5.1%
I	277	12.3%	53	9.2%	37	9.0%
J	403	17.9%	112	19.4%	72	17.5%
K	303	13.5%	97	16.8%	82	19.9%
L	233	10.4%	91	15.7%	72	17.5%
M	152	6.8%	68	11.8%	67	16.3%
N	47	2.1%	13	2.2%	24	5.8%
O	15	0.7%	9	1.6%	6	1.5%
P	6	0.3%	4	0.7%	1	0.2%
Total	2250	100.0%	578	100.0%	412	100.0%

Figure 2 Percentage of Occurrences of Various Combinations of Ratings¹ in Bin K by University Size for the 2017 Competition



¹MSS: Moderate for EoR, Strong for MoP, Strong for HQP
 SMS: Strong for EoR, Moderate for MoP, Strong for HQP
 SSM: Strong for EoR, Strong for MoP, Moderate for HQP

SECTION 2 – STATISTICS BY EVALUATION GROUP

Table 7 Success Rate, Average Grant and Total Amount Awarded by Category of Applicant for Each Evaluation Group, 2017 Competition

1501 - Genes, Cells and Molecules	Early Career Researchers	Established Researchers	
		Returning	Not Holding a Grant
Success Rate	54%	78%	45%
Average Grant	\$29,705	\$38,534	\$28,847
Total Amount Awarded	\$1,307,000	\$6,589,338	\$3,202,000

1502 - Biological Systems and Functions	Early Career Researchers	Established Researchers	
		Returning	Not Holding a Grant
Success Rate	66%	78%	31%
Average Grant	\$27,500	\$37,850	\$28,857
Total Amount Awarded	\$1,980,000	\$5,791,000	\$1,616,000

1503 - Evolution and Ecology	Early Career Researchers	Established Researchers	
		Returning	Not Holding a Grant
Success Rate	73%	80%	51%
Average Grant	\$27,520	\$38,739	\$25,333
Total Amount Awarded	\$660,489	\$2,982,920	\$532,000

1504 - Chemistry	Early Career Researchers	Established Researchers	
		Returning	Not Holding a Grant
Success Rate	62%	92%	34%
Average Grant	\$26,625	\$57,131	\$28,133
Total Amount Awarded	\$426,000	\$5,598,880	\$422,000

1505 - Physics	Early Career Researchers	Established Researchers	
		Returning	Not Holding a Grant
Success Rate	80%	84%	48%
Average Grant	\$27,928	\$42,043	\$29,167
Total Amount Awarded	\$446,849	\$4,120,192	\$612,500

1506 - Geosciences	Early Career Researchers	Established Researchers	
		Returning	Not Holding a Grant
Success Rate	62%	85%	39%
Average Grant	\$26,556	\$36,781	\$26,458
Total Amount Awarded	\$478,000	\$3,199,980	\$635,000

1507 - Computer Science	Early Career Researchers	Established Researchers	
		Returning	Not Holding a Grant
Success Rate	59%	79%	34%
Average Grant	\$24,700	\$31,868	\$24,647
Total Amount Awarded	\$741,000	\$4,557,100	\$838,000

1508 - Mathematics and Statistics	Early Career Researchers	Established Researchers	
		Returning	Not Holding a Grant
Success Rate	83%	97%	57%
Average Grant	\$19,446	\$26,735	\$19,436
Total Amount Awarded	\$738,965	\$3,368,633	\$408,155

1509 - Civil, industrial and Systems Engineering	Early Career Researchers	Established Researchers	
		Returning	Not Holding a Grant
Success Rate	81%	89%	44%
Average Grant	\$22,647	\$34,081	\$23,438
Total Amount Awarded	\$1,155,000	\$3,237,723	\$750,000

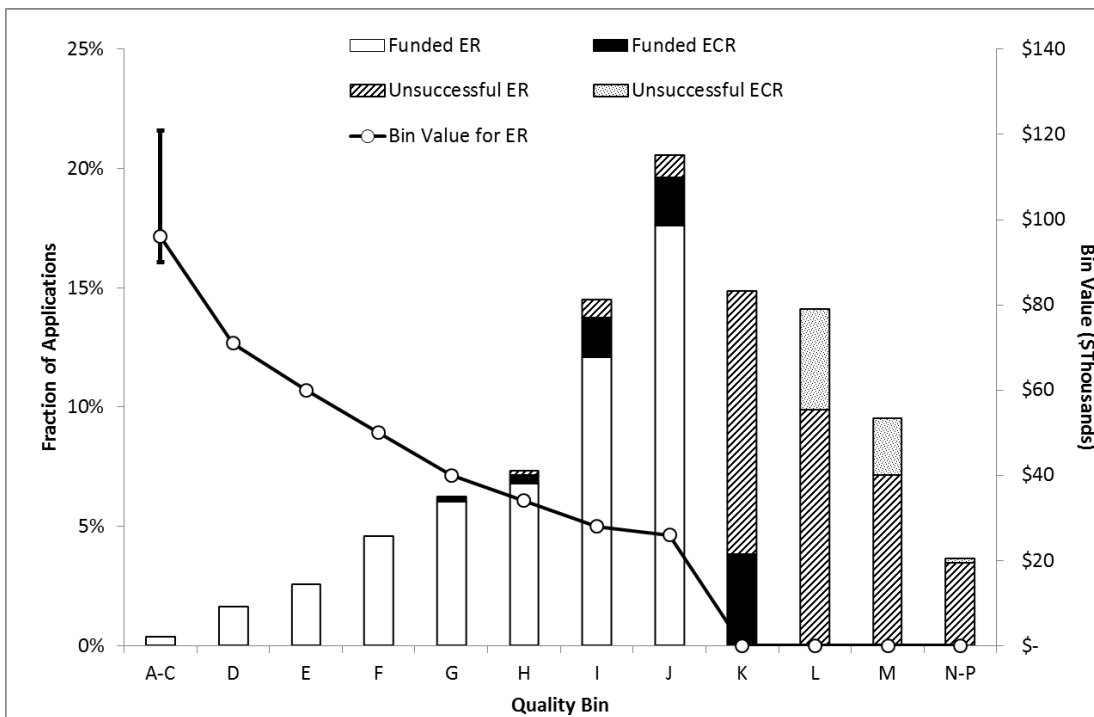
1510 - Electrical and Computer Engineering	Early Career Researchers	Established Researchers	
		Returning	Not Holding a Grant
Success Rate	61%	80%	36%
Average Grant	\$26,182	\$38,961	\$26,563
Total Amount Awarded	\$576,000	\$4,987,000	\$850,000

1511 - Materials and Chemical Engineering	Early Career Researchers	Established Researchers	
		Returning	Not Holding a Grant
Success Rate	81%	85%	34%
Average Grant	\$23,720	\$34,215	\$27,870
Total Amount Awarded	\$593,000	\$3,182,000	\$641,000

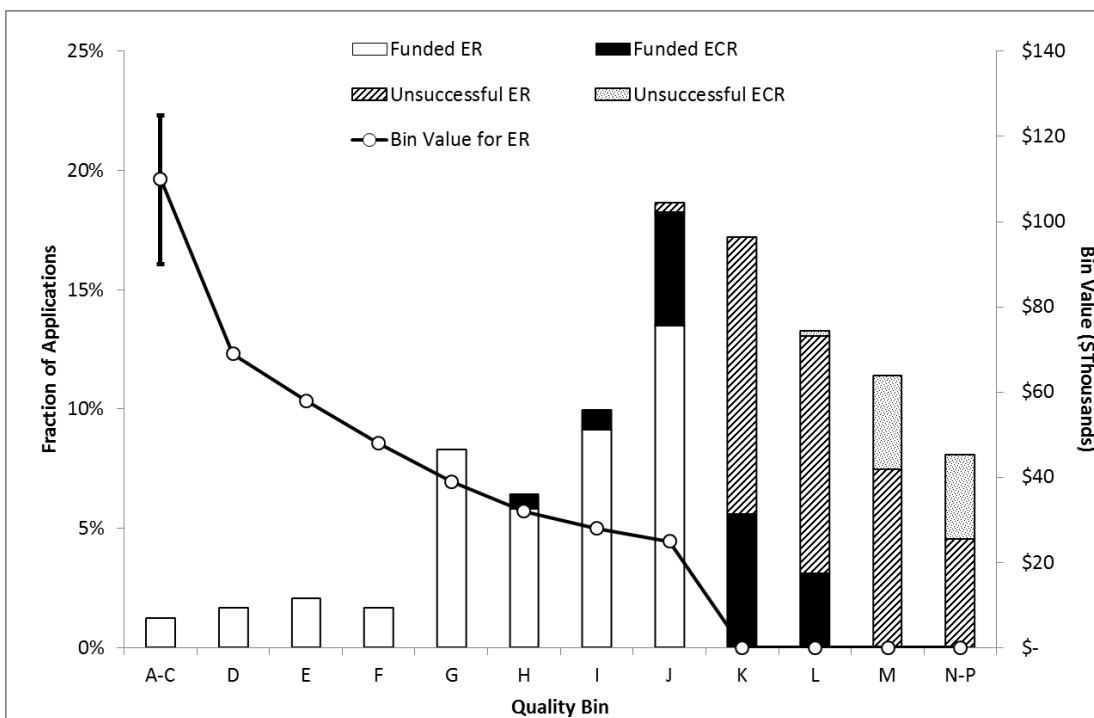
1512 - Mechanical Engineering	Early Career Researchers	Established Researchers	
		Returning	Not Holding a Grant
Success Rate	78%	79%	31%
Average Grant	\$23,448	\$35,652	\$24,053
Total Amount Awarded	\$680,000	\$3,244,300	\$457,000

Figure 3 Distribution of the Percentage of Applications by Quality Bin for Each Evaluation Group, 2017 Competition

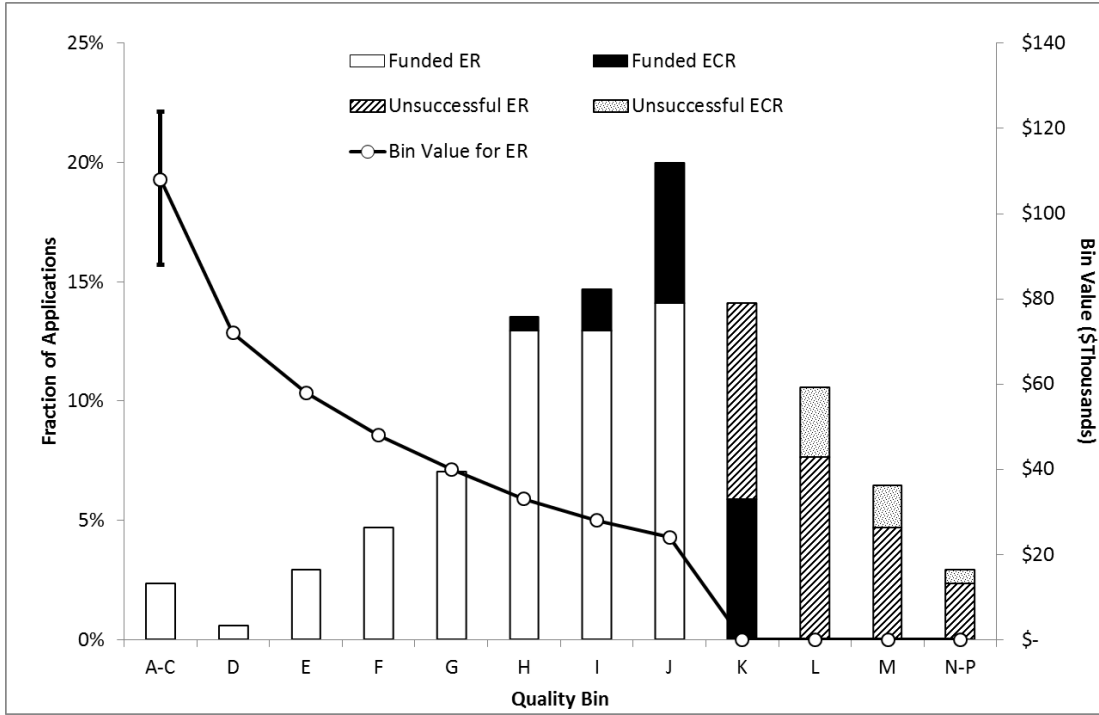
Gene, Cells and Molecules



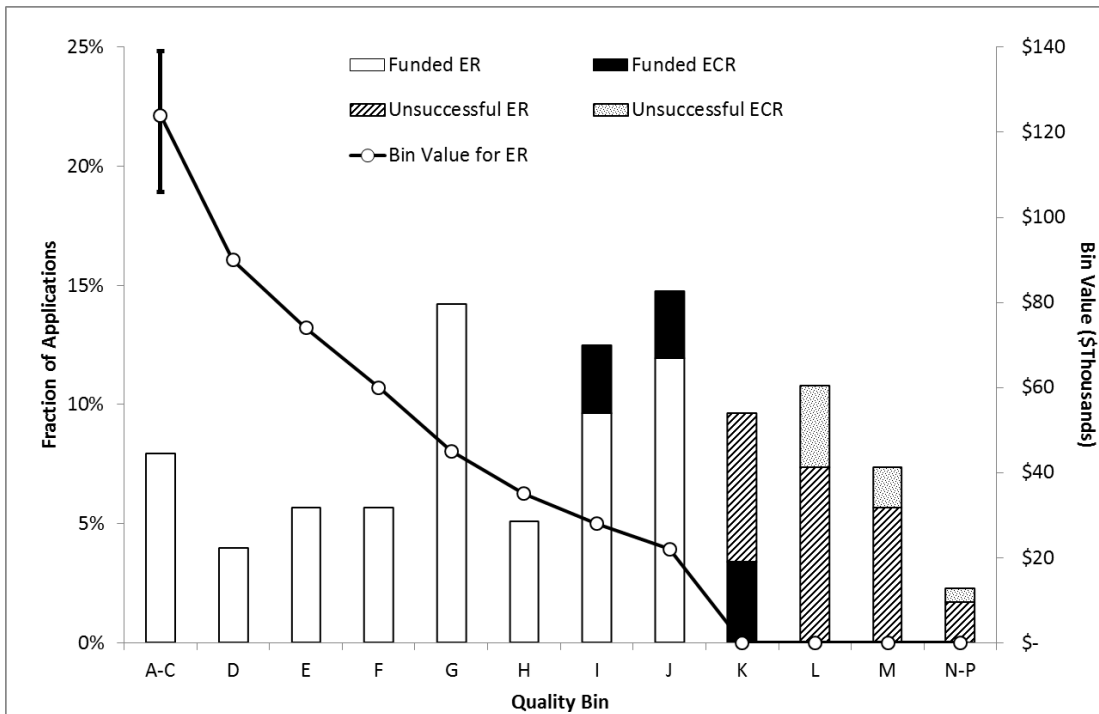
Biological Systems and Functions



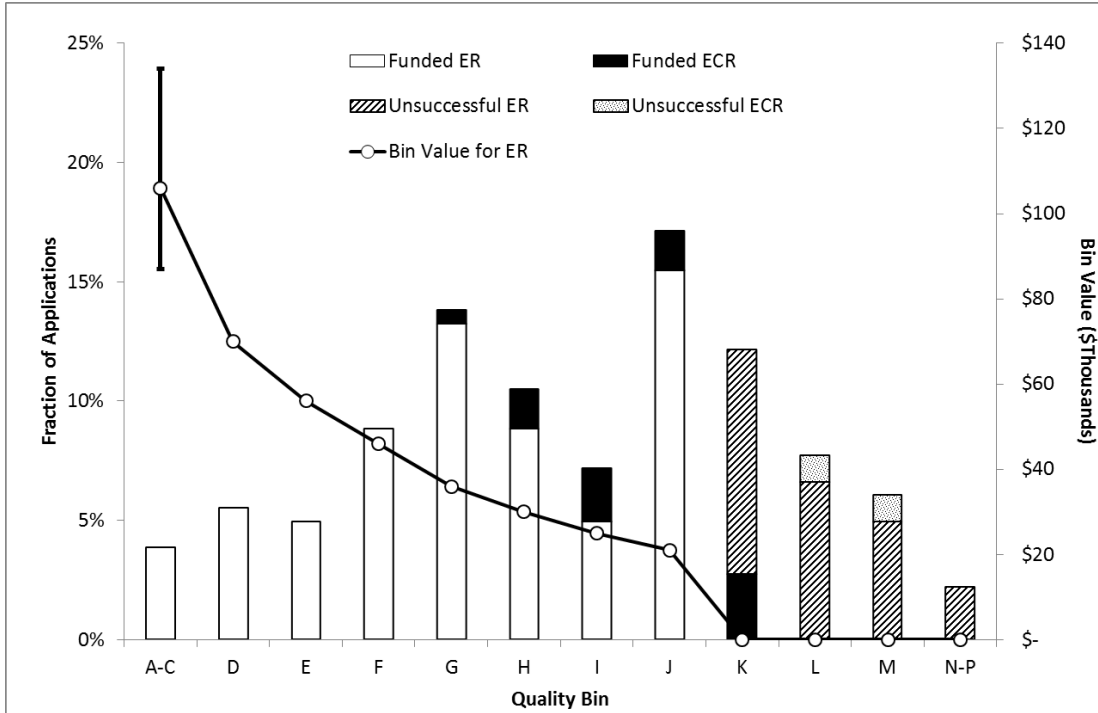
Evolution and Ecology



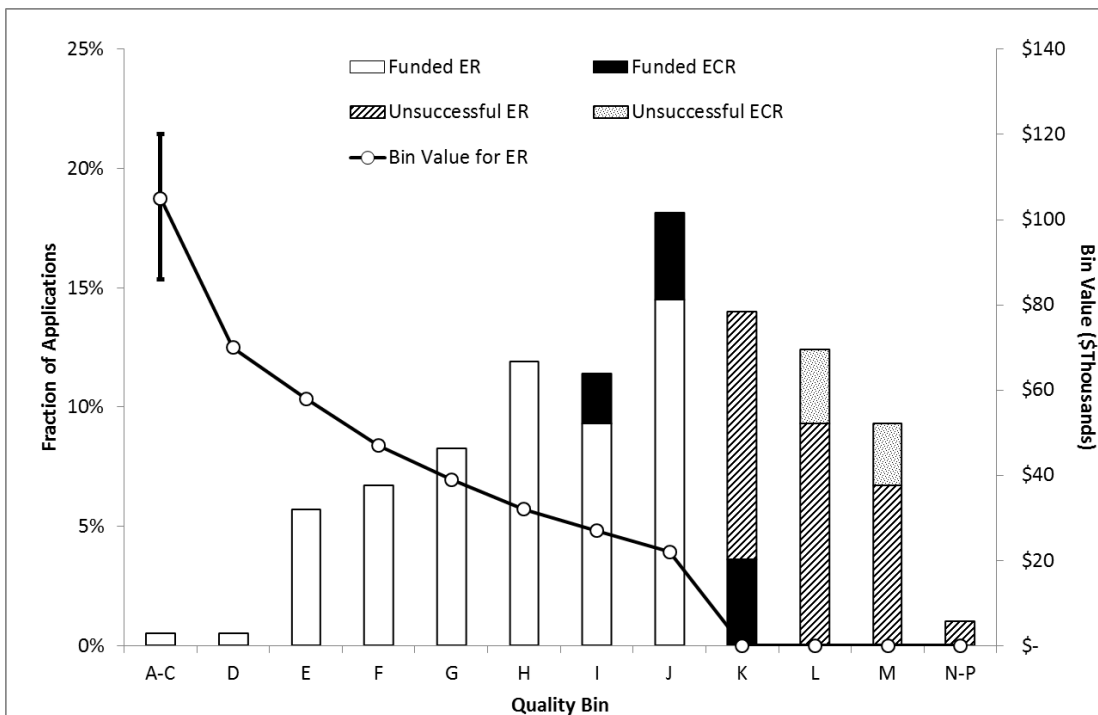
Chemistry



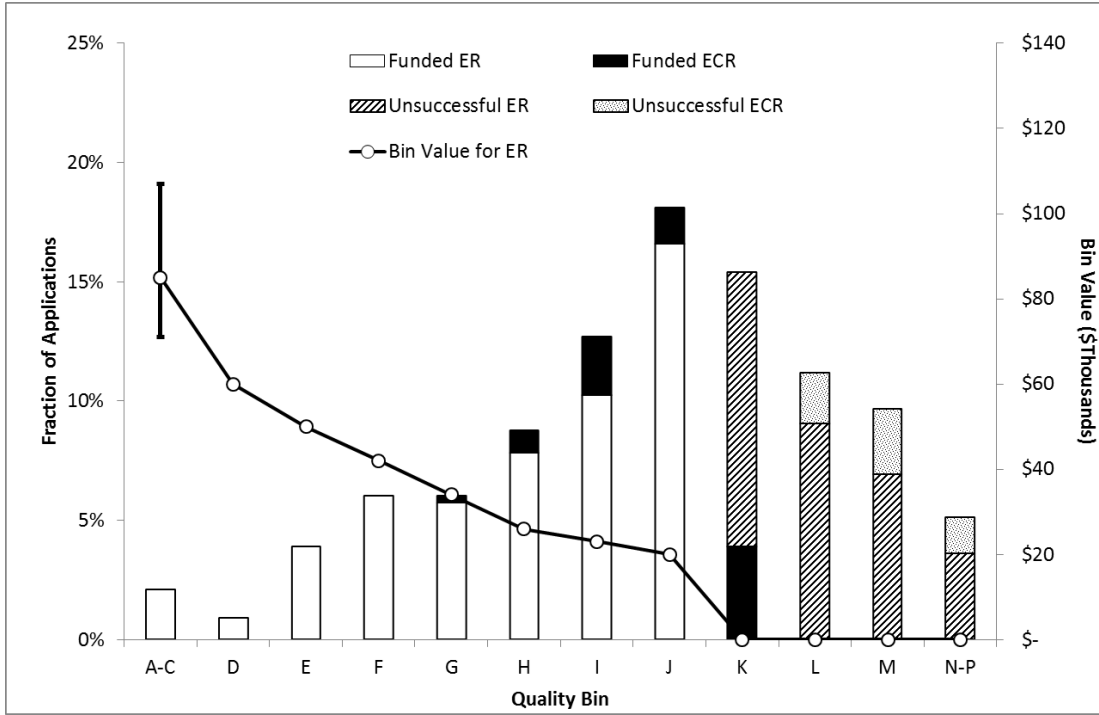
Physics



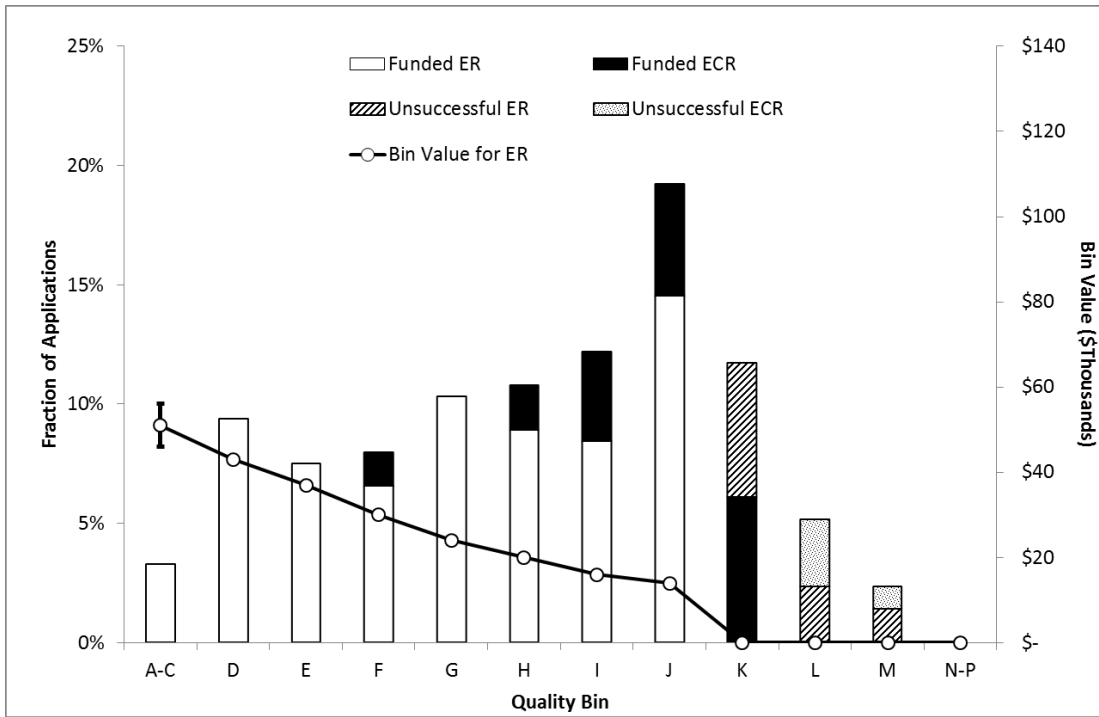
Geoscience



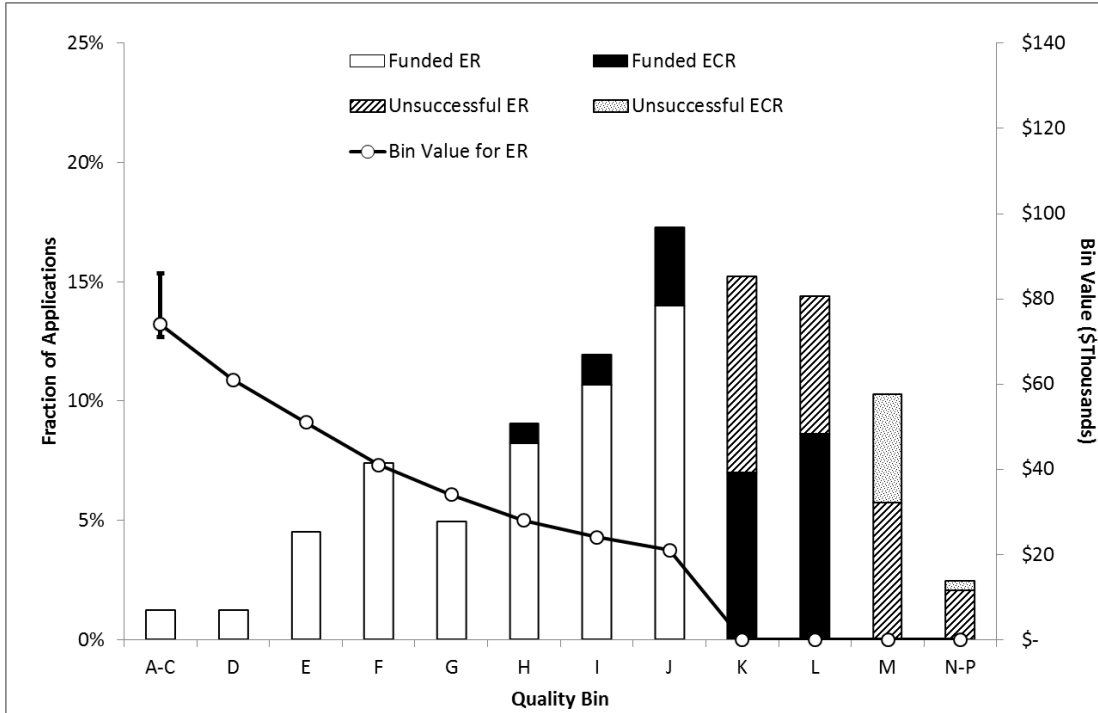
Computer Science



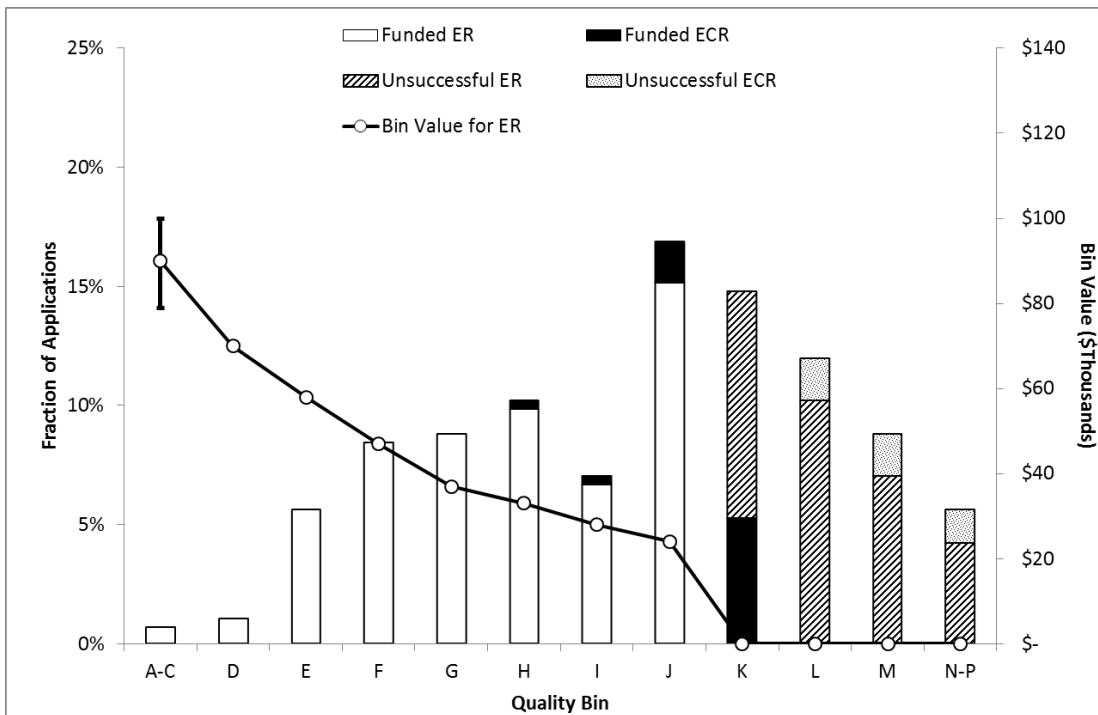
Mathematics and Statistics



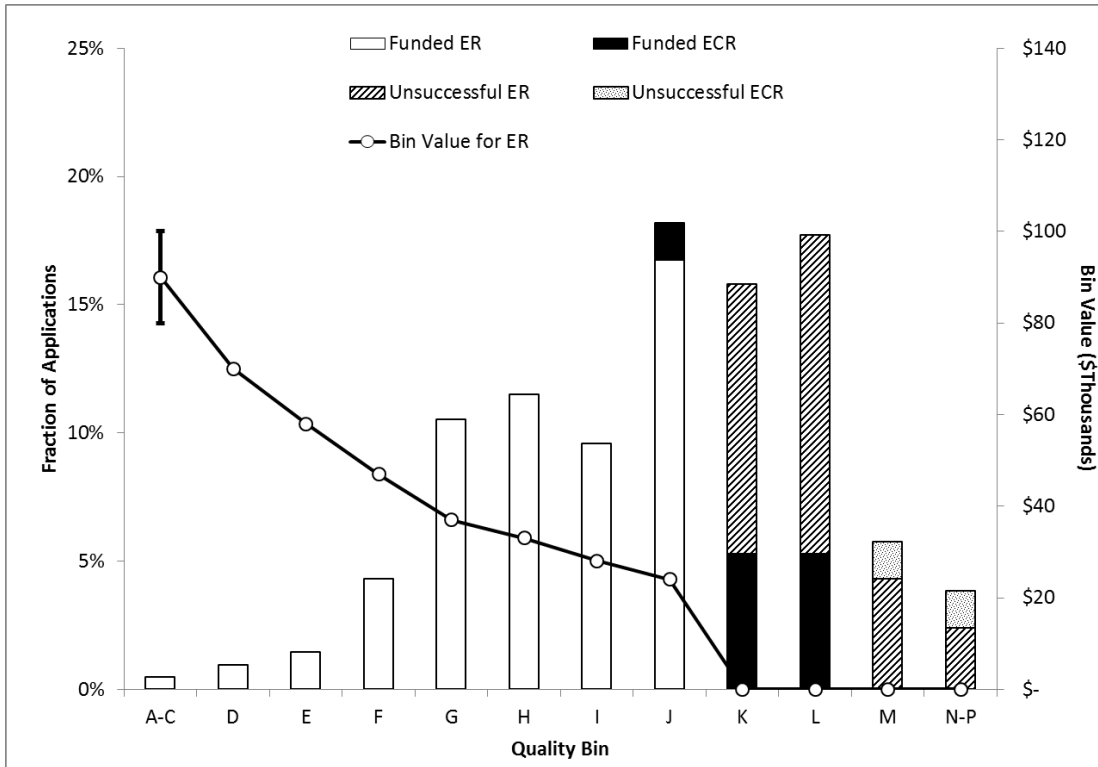
Civil, Industrial and Systems Engineering



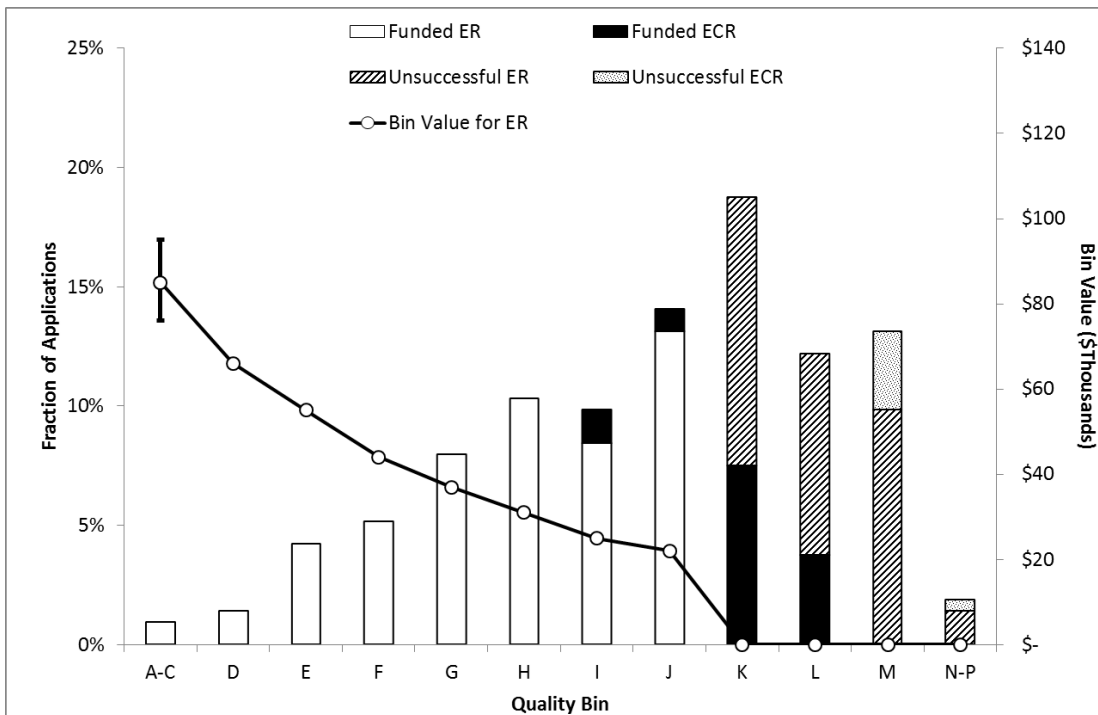
Electrical and Computer Engineering



Materials and Chemical Engineering



Mechanical Engineering



What is the distribution of applications by “quality bin”: http://www.nserc-crsng.gc.ca/NSERC-CRSNG/FundingDecisions-DecisionFinancement/Questions-Questions_eng.asp

SECTION 3 – SEX-DISAGGREGATED COMPETITION STATISTICS

The data used in this section was taken from the CCV portion of the 2017 applications where applicants are asked to indicate their sex. NSERC is committed to using more inclusive gender language in the future.

Table 8 Number of Applicants by Sex and Career Stage, 2017 Competition

	Sex		
	Female	Male	Not Indicated
Adjunct, Emeriti & Other	17	86	41
Assistant Professor	181	398	162
Associate Professor	166	536	208
Professor	187	1007	251
Total	551	2027	662

Table 9 Discovery Grant Success Rate and Average Awarded Amount by Career Stage and Sex, 2017 Competition

	Success Rate			Average Award		
	Female	Male	Not Indicated	Female	Male	Not Indicated
Adjunct, Emeriti & Other	18%	47%	61%	\$23,000	\$27,663	\$33,324
Assistant Professor	56%	65%	62%	\$25,821	\$25,616	\$25,544
Associate Professor	64%	57%	54%	\$31,674	\$31,168	\$28,000
Professor	80%	75%	77%	\$37,717	\$38,859	\$34,310

Table 10 Discovery Grant Success Rate and Average Grant by Applicant Status and Sex, 2017 Competition

	Success Rate			Average Award		
	Female	Male	Not Indicated	Female	Male	Not Indicated
ECR	61%	71%	70%	\$25,962	\$25,261	\$25,268
ER	67%	67%	64%	\$34,330	\$35,922	\$32,103
Total	66%	67%	65%	\$32,475	\$34,294	\$30,565

Table 11 Discovery Grant Success Rate by Sex and Evaluation Group, 2017 Competition

Evaluation Groups	Success Rate			Percentage of Applicants		
	Female	Male	Not Indicated	Female	Male	Not Indicated
1501 Genes, Cells and Molecules	62.5%	58.6%	63.2%	23.5%	69.5%	7.0%
1502 Biological Systems and Functions	54.4%	61.6%	50.9%	28.2%	60.0%	11.8%
1503 Evolution and Ecology	71.9%	74.7%	66.0%	18.8%	53.5%	27.6%
1504 Chemistry	77.4%	73.3%	68.0%	17.6%	68.2%	14.2%
1505 Physics	80.0%	73.9%	73.9%	11.0%	63.5%	25.4%
1506 Geosciences	69.6%	71.6%	57.4%	11.9%	56.5%	31.6%
1507 Computer Science	66.0%	57.5%	69.5%	14.2%	54.1%	31.7%
1508 Mathematics and Statistics	88.9%	87.0%	85.9%	12.7%	54.0%	33.3%
1509 Civil, Industrial and Systems Engineering	68.6%	76.0%	68.5%	14.4%	63.4%	22.2%
1510 Electrical and Computer Engineering	72.2%	67.0%	54.2%	6.3%	68.3%	25.4%
1511 Materials and Chemical Engineering	64.7%	71.4%	57.1%	16.3%	63.6%	20.1%
1512 Mechanical Engineering	70.0%	65.8%	61.4%	9.4%	70.0%	20.7%

SECTION 4 – RESEARCH TOOLS AND INSTRUMENTS

Table 12 Overall Comparative Statistics, 2015-2017 Research Tools and Instruments Competitions

	2015	2016	2017
Requested Amount	\$73,990,321	\$79,110,834	\$91,616,517
Awarded Amount	\$25,207,106	\$26,133,975	\$30,471,770
Funding Rate	34%	33%	33%
Number of Applications	666	657	748
Number of Awarded Applications	218	215	241
Success Rate	33%	33%	32%

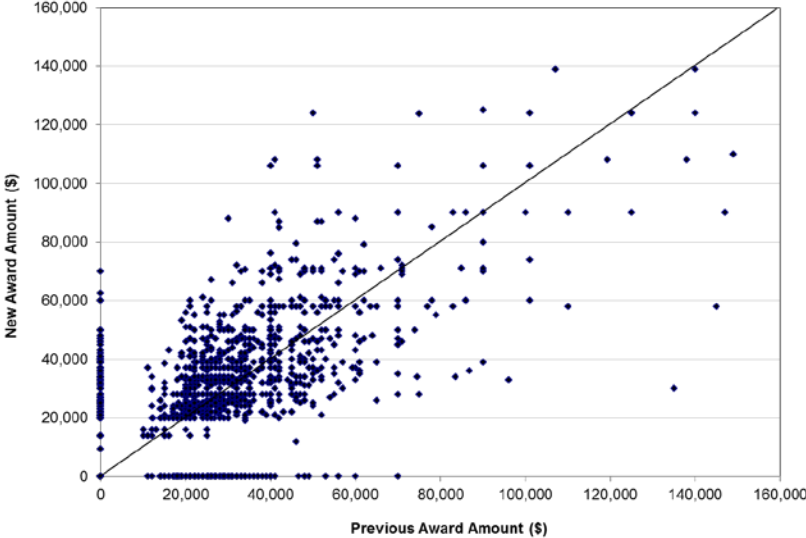
Table 13 Research Tools and Instruments 2017 Competition Results by Selection Committee

	Requested	Awarded	Funding Rate	Applied	Awarded	Success Rate	Average Requested	Average Awarded
Genes, Cells and Molecules (RTI)	\$11,983,400	\$4,027,855	33.6%	95	29	30.5%	\$126,141	\$138,892
Biological Systems and Functions (RTI)	\$12,526,283	\$4,164,838	33.2%	114	35	30.7%	\$109,880	\$118,995
Environmental Sciences (RTI)	\$9,844,159	\$3,361,197	34.1%	91	33	36.3%	\$108,178	\$101,854
Chemistry (RTI)	\$13,827,418	\$4,540,681	32.8%	107	34	31.8%	\$129,228	\$133,549
Physics (RTI)	\$7,553,476	\$2,553,185	33.8%	60	18	30.0%	\$125,891	\$141,844
Computer, Mathematical and Statistical Sciences (RTI)	\$3,719,621	\$1,257,191	33.8%	34	12	35.3%	\$109,401	\$104,766
Engineering (RTI)	\$32,162,160	\$10,566,823	32.9%	247	80	32.4%	\$130,211	\$132,085
Operation and Maintenance Support for Research Equipment (RTI)	\$18,824,043	\$4,008,624	21.3%	149	28	18.8%	\$126,336	\$143,165
Grand Total	\$110,440,560	\$34,480,394	31.2%	897	269	30.0%	\$123,122	\$128,180

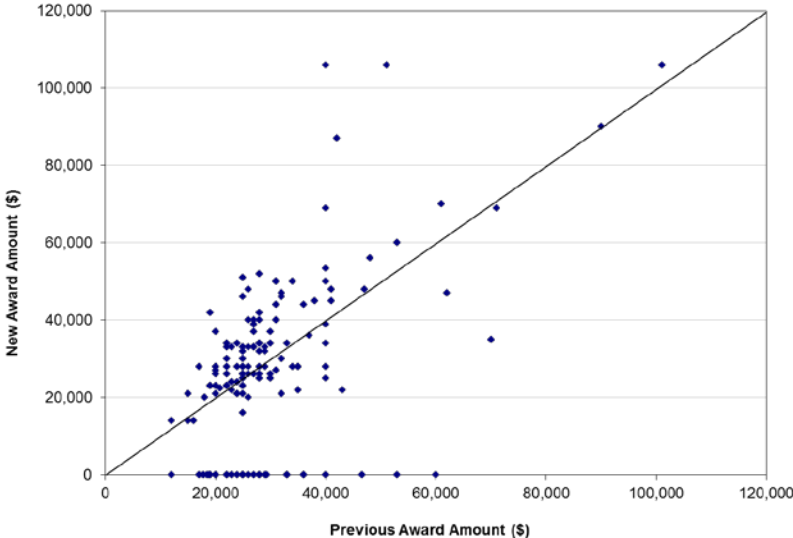
APPENDIX 1

Figure 4 Plot Showing Changes in Grant Level from one Competition to the Next for Individual* Grantees

a) All Established Researchers:



b) Established Researchers – First Renewal:



*In some cases one data point may represent several researchers.