

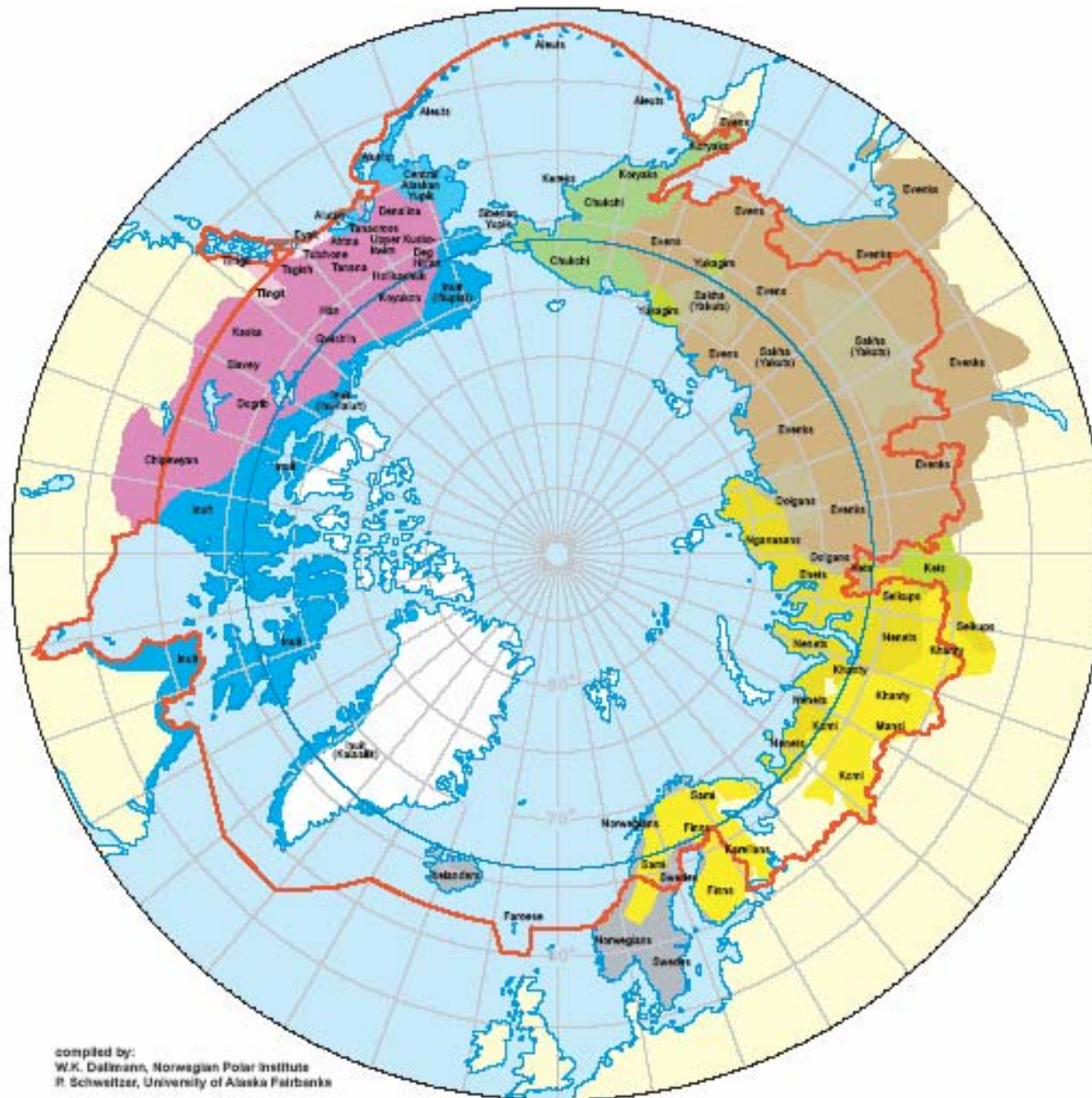
Circumpolar Cancer Review

Working Group Meeting
Vancouver, BC, Canada
June 20, 2007

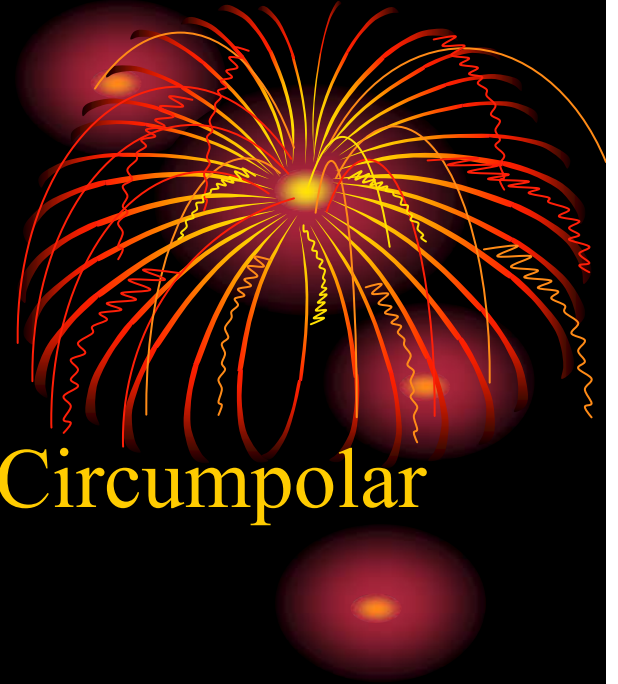
Supported by a workshop grant from the
CIHR Institute of Aboriginal People's Health



Peoples of the Circumpolar World



Background



- 1980s – International Union of Circumpolar Health cancer working group:
 - Alaska – Anne Lanier
 - Denmark/Greenland – Hans Storm, Niels Højgaard Nielsen
 - Canada – Leslie Gaudette, Anthony Miller
- Limited to Inuit only
- Pooled data from regional registries -> analysis and report

ISSN 0284-186X

Volume 35, No. 5, 1996

ACTA ONCOLOGICA

Contents:

Papers from
THE INTERNATIONAL UNION FOR CIRCUMPOLAR HEALTH'S
WORKING GROUP ON CANCER

- 521 Editorial
- 523 Cancer in Circumpolar Inuit—Background information for Alaska
Lanier A. P.
- 527 Cancer in Circumpolar Inuit—Background information for cancer patterns in Canadian Inuit
Gaudette L. A., Freitag S., Dufour R., Baikie M., Gao R.-N., Wileman M.
- 535 Cancer in Circumpolar Inuit—Background information for the cancer pattern in Greenland
Nielsen N. H., Storm H. H.
- 539 Cancer among Circumpolar Inuit 1969–1988—Introduction and methods
Nielsen N. H., Storm H. H., Christensen N., Gaudette L. A., Lanier A. P.
- 545 Cancers of the buccal cavity and pharynx in Circumpolar Inuit
Lanier A. P., Alberts S. R.
- 553 Cancer of the digestive system in Circumpolar Inuit
Storm H. H., Nielsen N. H.
- 571 Cancer of the respiratory system in Circumpolar Inuit
Miller A. B., Gaudette L. A.
- 577 Breast cancer in Circumpolar Inuit 1969–1988
Miller A. B., Gaudette L. A.
- 581 Cancer of the female genital tract in Circumpolar Inuit
Kjer S. K., Nielsen N. H.
- 589 Cancer of the male genital tract in Circumpolar Inuit
Prenner A., Storm H. H., Nielsen N. H.

(Continued on back cover)



SCANDINAVIAN UNIVERSITY PRESS
Oslo - Copenhagen - Stockholm - Boston

- Collection of papers in *Acta Oncologica* vol 35, no. 5, 1996
- 4 5-year periods:
 - 1969-1973
 - 1974-1978
 - 1979-1983
 - 1984-1988
- Overview and individual sites

Since then?

- >15 years have passed
- Individual regions have updated surveillance reports to early 2000s
- Time for an international update from 1989 to 2003?
- Discussion in 13th International Congress on Circumpolar Health, Novosibirsk, Russia
- Other international initiatives – eg. Canada-US Indigenous Cancer Collaborative



Recent reviews: Alaska

Cancer in Alaska Natives 1969-2003

35-Year Report



Office of Alaska Native Health Research and
Alaska Native Epidemiology Center
Alaska Native Tribal Health Consortium
January 2006

- Longest continuous cancer registry of Native population
- Highly prolific scientific output
- Can provide separate data for Eskimo, Indian and Aleut but most reports refer to Alaska Native collectively

SUPPLEMENTUM NO. 20, VOL. 99, 1991

APMIS

ACTA PATHOLOGICA,
MICROBIOLOGICA
ET IMMUNOLOGICA
SCANDINAVICA

**Cancer in Greenland
1953-1985**

by Anne Prener, Nils Højgaard
Nielsen, Hans H. Storm, Jens
Peder Hart Hansen, Ole Møller
Jensen

Greenland

- Greenland Inuit [\approx “born in Greenland”] data maintained by Danish Cancer Registry
- Data up to 2003 already extracted

Int. J. Cancer: 107, 1017–1022 (2003)
© 2003 Wiley-Liss, Inc.



Publication of the International Union Against Cancer

CANCER IN GREENLANDIC INUIT 1973–1997: A COHORT STUDY

Jeppe FRIBORG^{1*}, Anders KOCH¹, Jan WOHLFARHT¹, Hans-Henrik STORM² and Mads MELBYE¹

¹Department of Epidemiology Research, Danish Epidemiology Science Center, Statens Serum Institute, Copenhagen, Denmark

²Department of Cancer Prevention and Documentation, Danish Cancer Society, Copenhagen, Denmark

Canada



Cancer in the
Northwest Territories
1990-2000
A Descriptive Report

December 2003



Northwest
Territories Health and Social Services



Nunavut Department of Health and Social Services

1992 - 2001



A TEN-YEAR

PROFILE
OF CANCER
IN NUNAVUT

November 2003



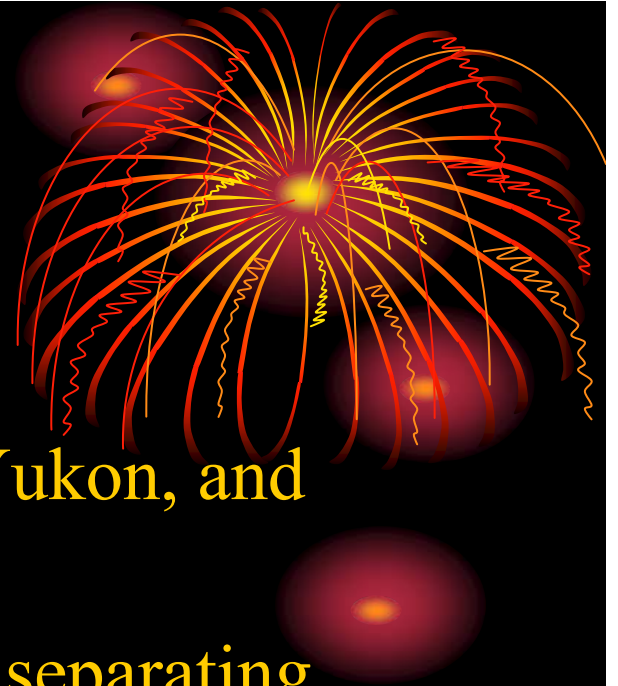
- Original 1969-1988 dataset included Northwest Territories (pre-Nunavut), Nunavik (northern Quebec) and Labrador – not been updated since
- Northwest Territories report already provides data separately for Inuit, First Nations and others
- Nunavut report does not separate Inuit (85% of population) from others -> but can be done -> just completed in May, 2007
- No ready means of extracting Inuit cases from Quebec or Labrador provincial registries

Why an update now?



- What are recent trends? Increasing? What sites? “traditional” vs “modern” cancers
- Inuit population small – worldwide around 165,000 – many cancers very rare
- Cancer an increasing community concern
- Evidence-based public health action – primary prevention and screening
- Inuit organizations (eg. ITK) involved in cancer care planning need Inuit-specific data

What about other indigenous peoples?



- Dene/Athapaskan people – Alaska, Yukon, and NWT – explore feasibility now
- Alaska and NWY already capable of separating Indian/First Nations data; Yukon?
- Interest nationally – Assembly of First Nations meeting on cancer surveillance in June, 2007
- Arctic Athabaskan Council informed [what about Gwichin International and Aleut International?]
- Longer term – Sami in Scandinavia and Russian indigenous peoples

Issues for discussion

Principles of Collaboration/Cooperation

- Data sharing and access
- Privacy and confidentiality
- Resource requirements
- Dissemination of results
- Knowledge translation – influencing policies, programs and services

Note: different stages of development [and hence outstanding issues] for Inuit review vs Dene/Athapaskan review

