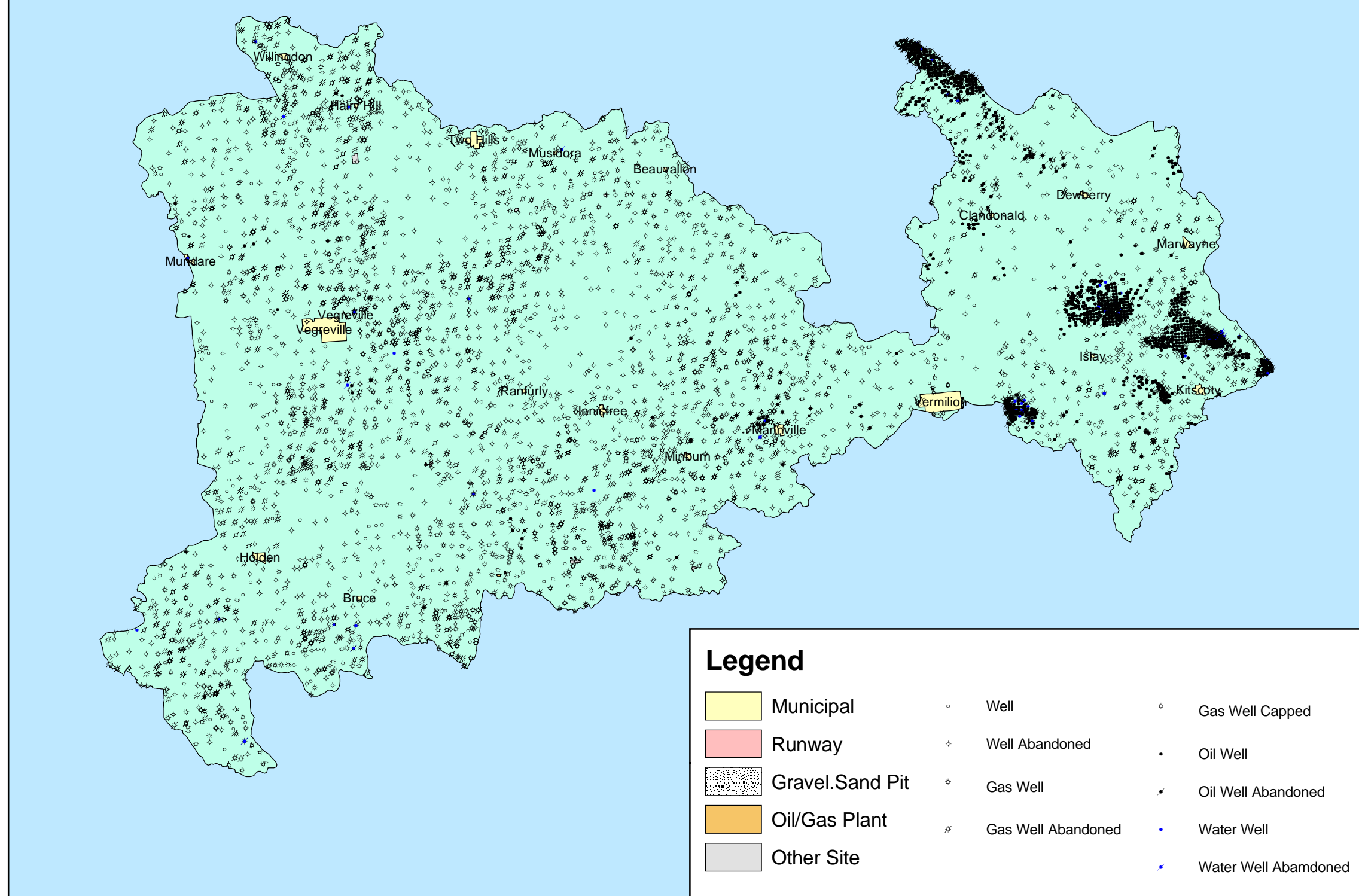
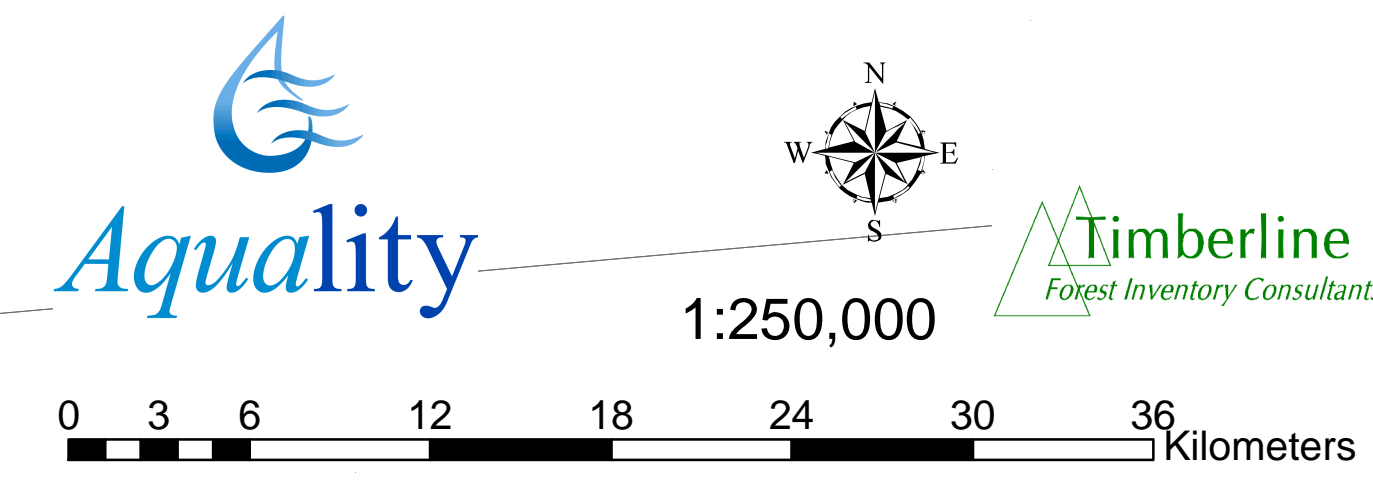
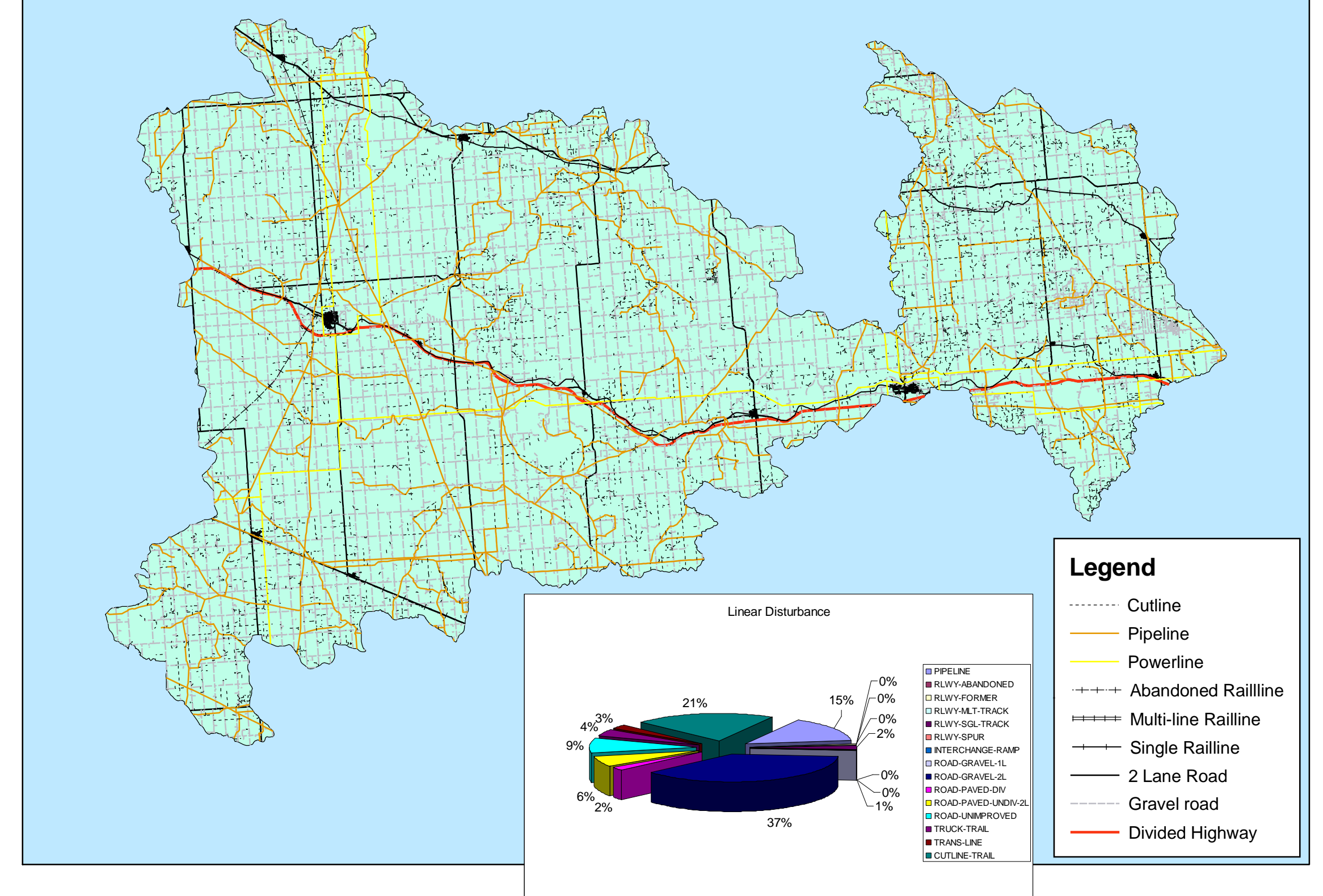


Vermilion Hydrological Overview

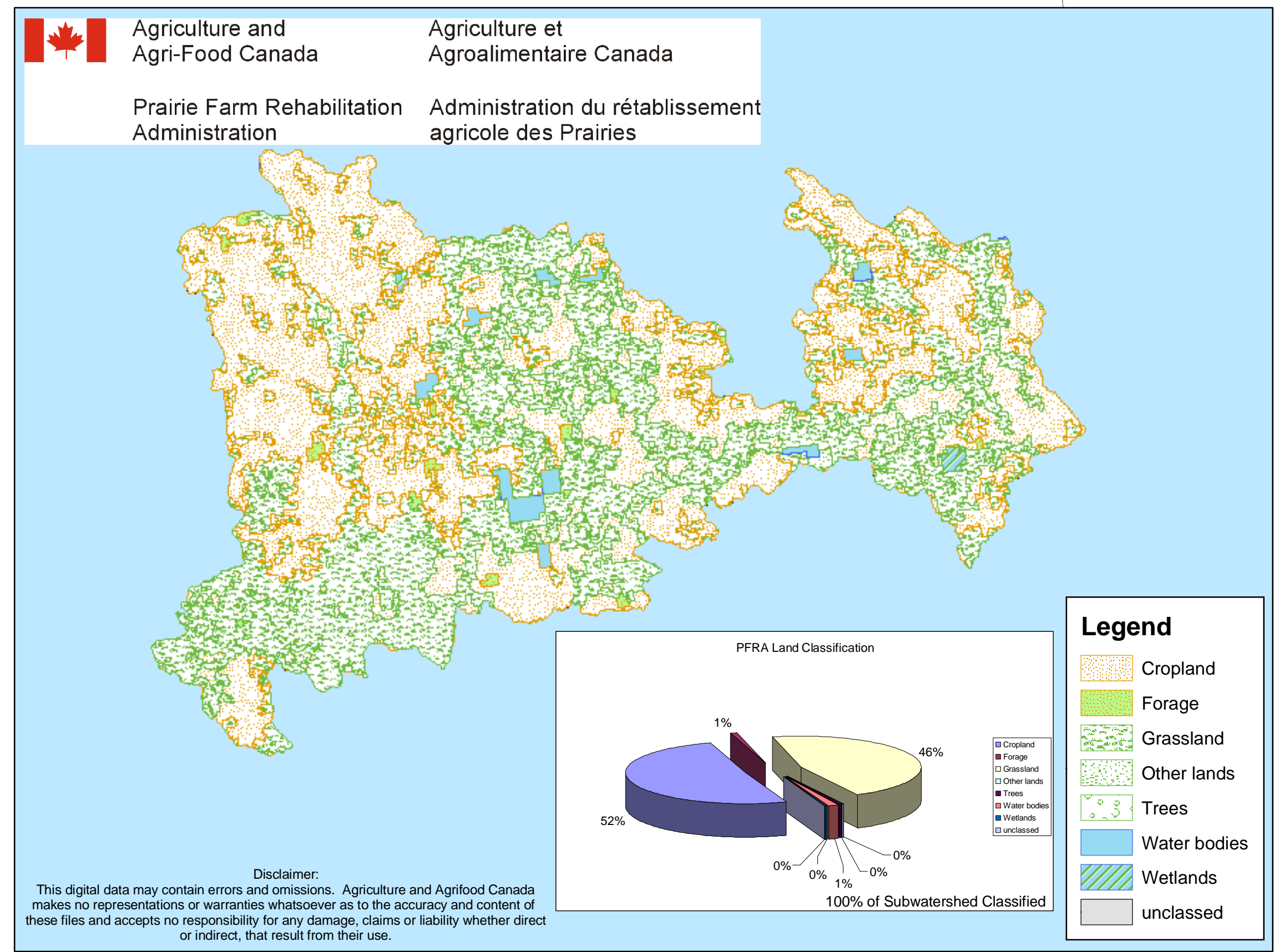
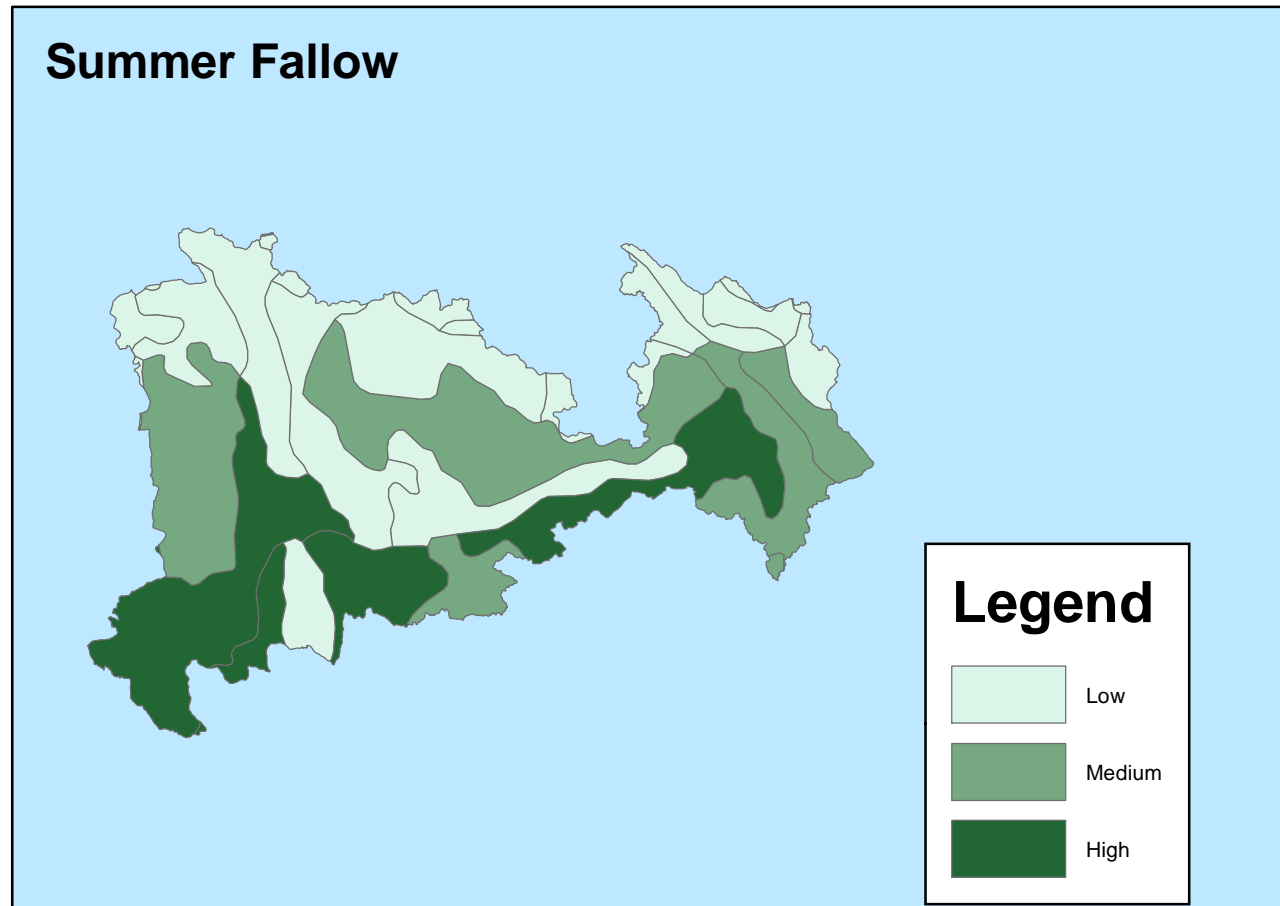
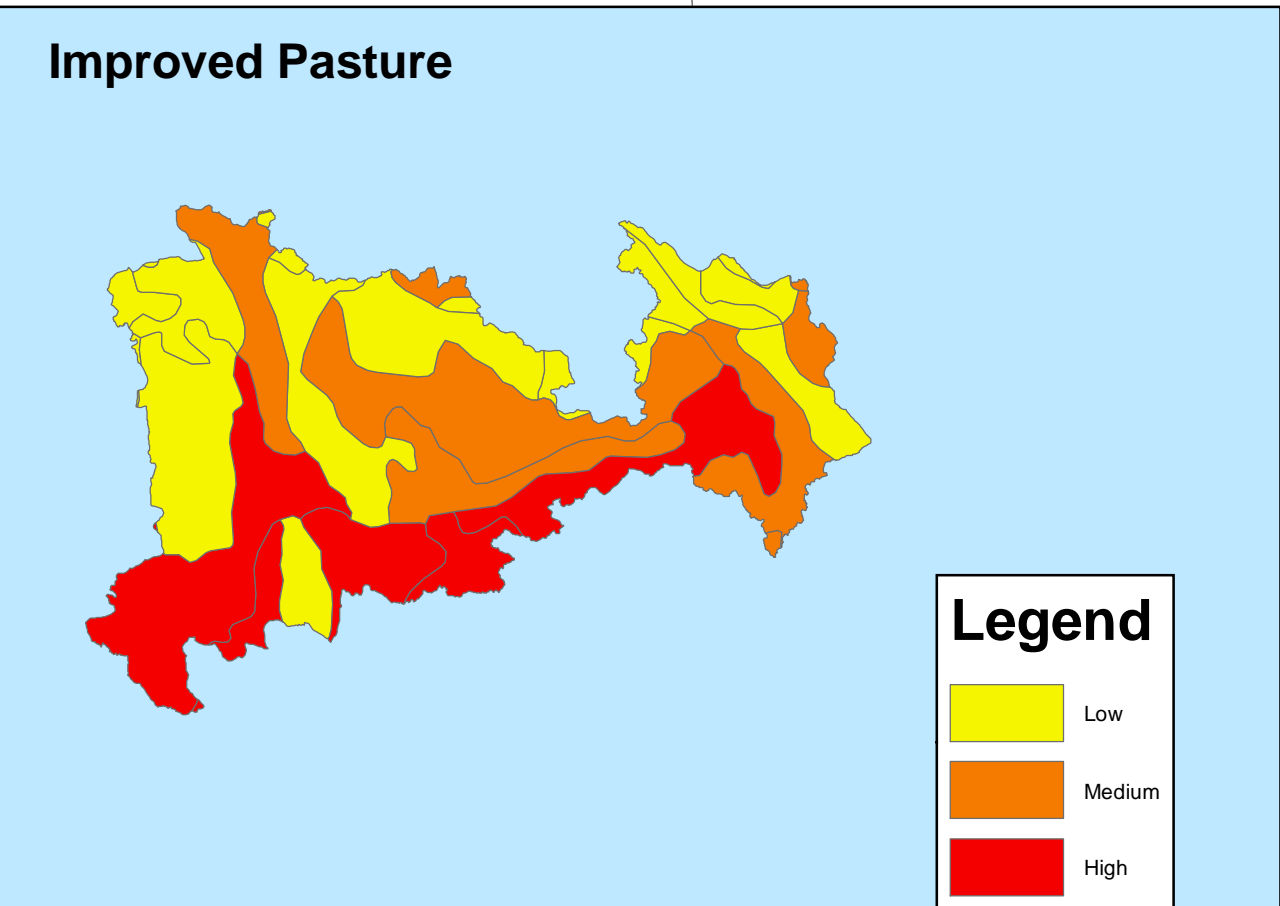
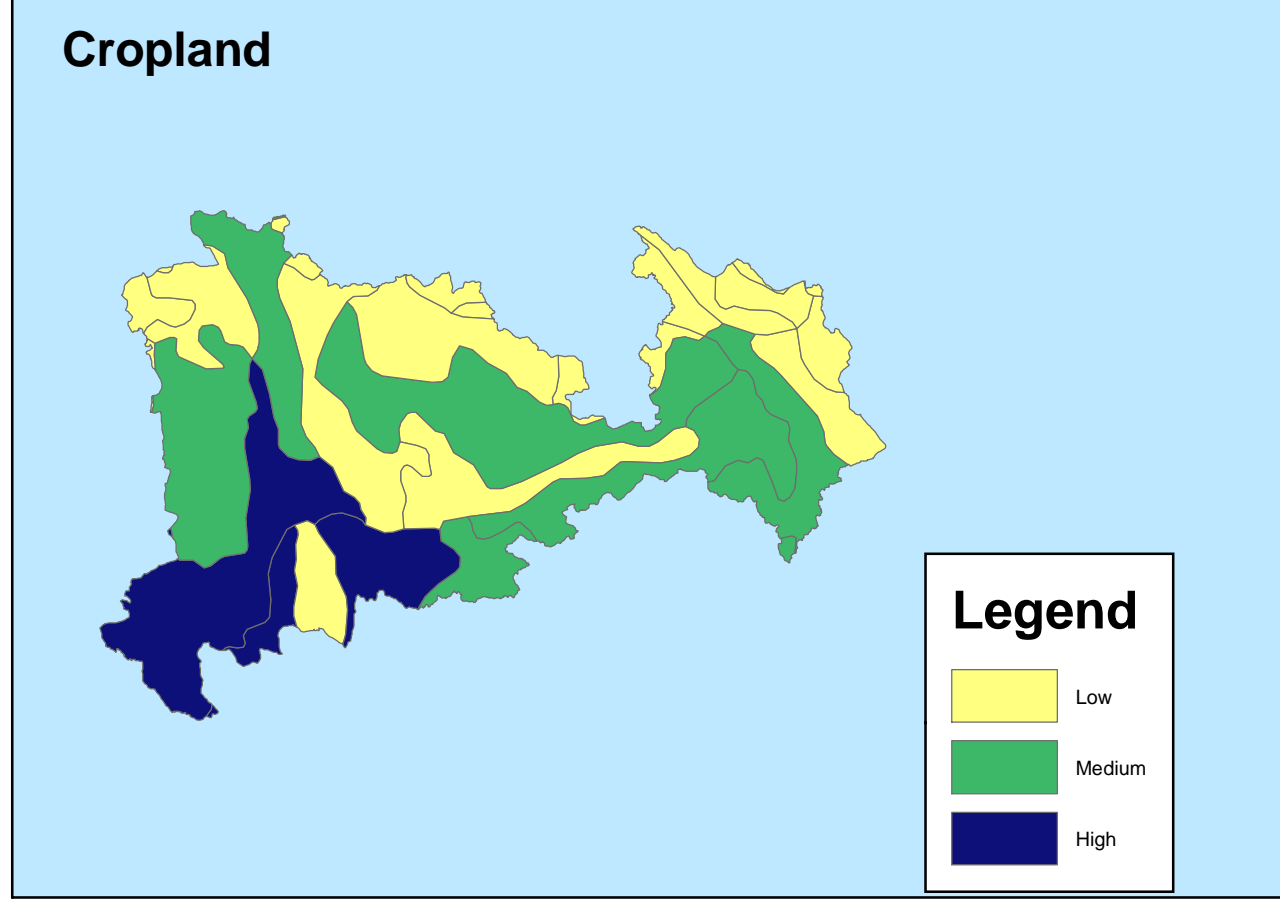
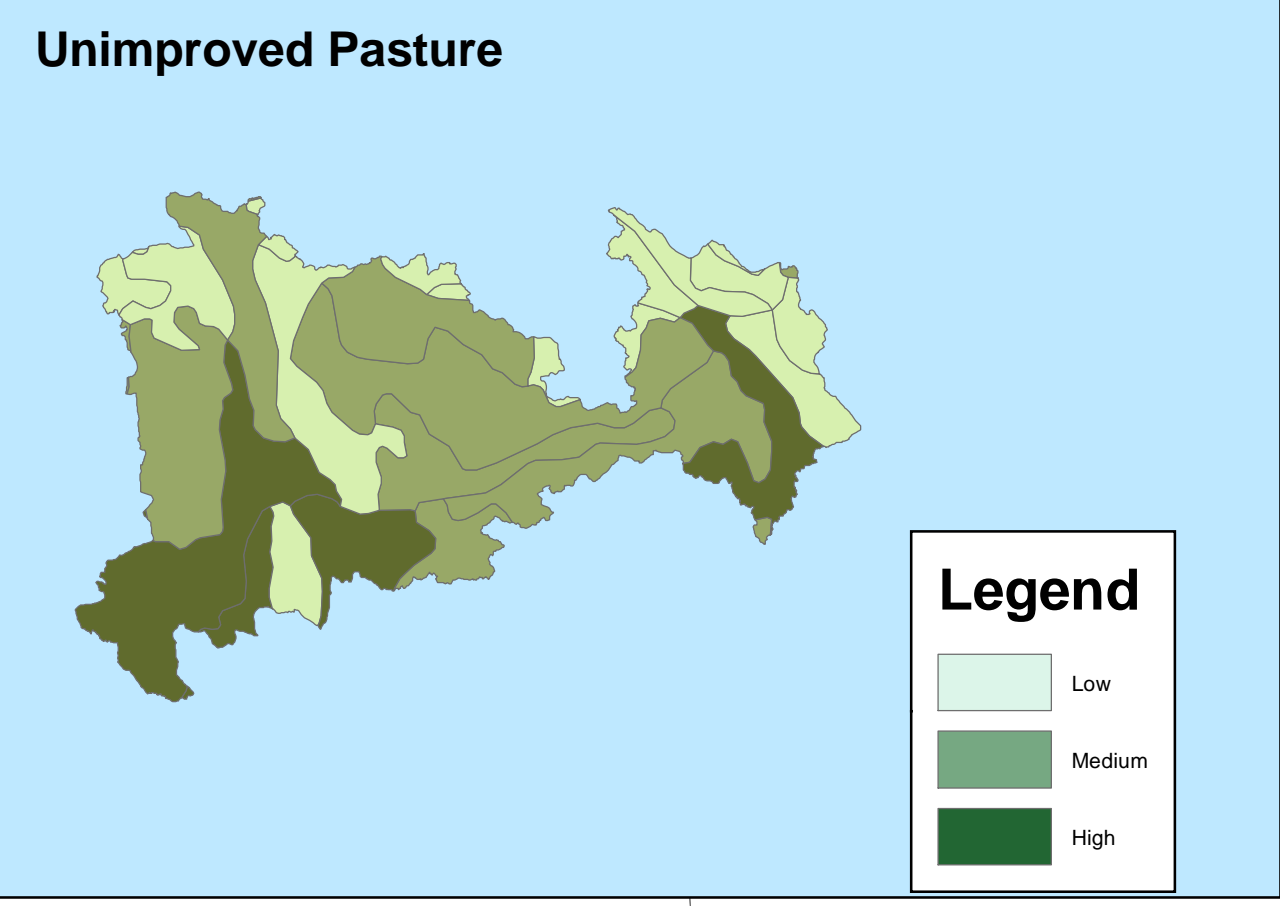
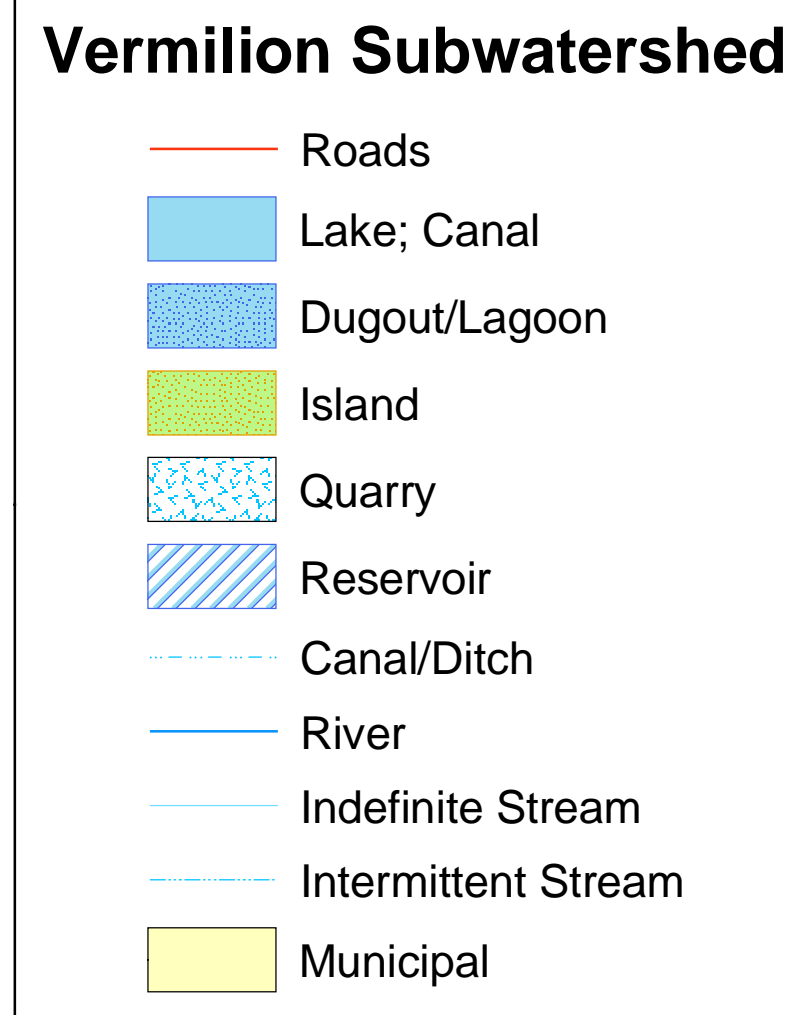
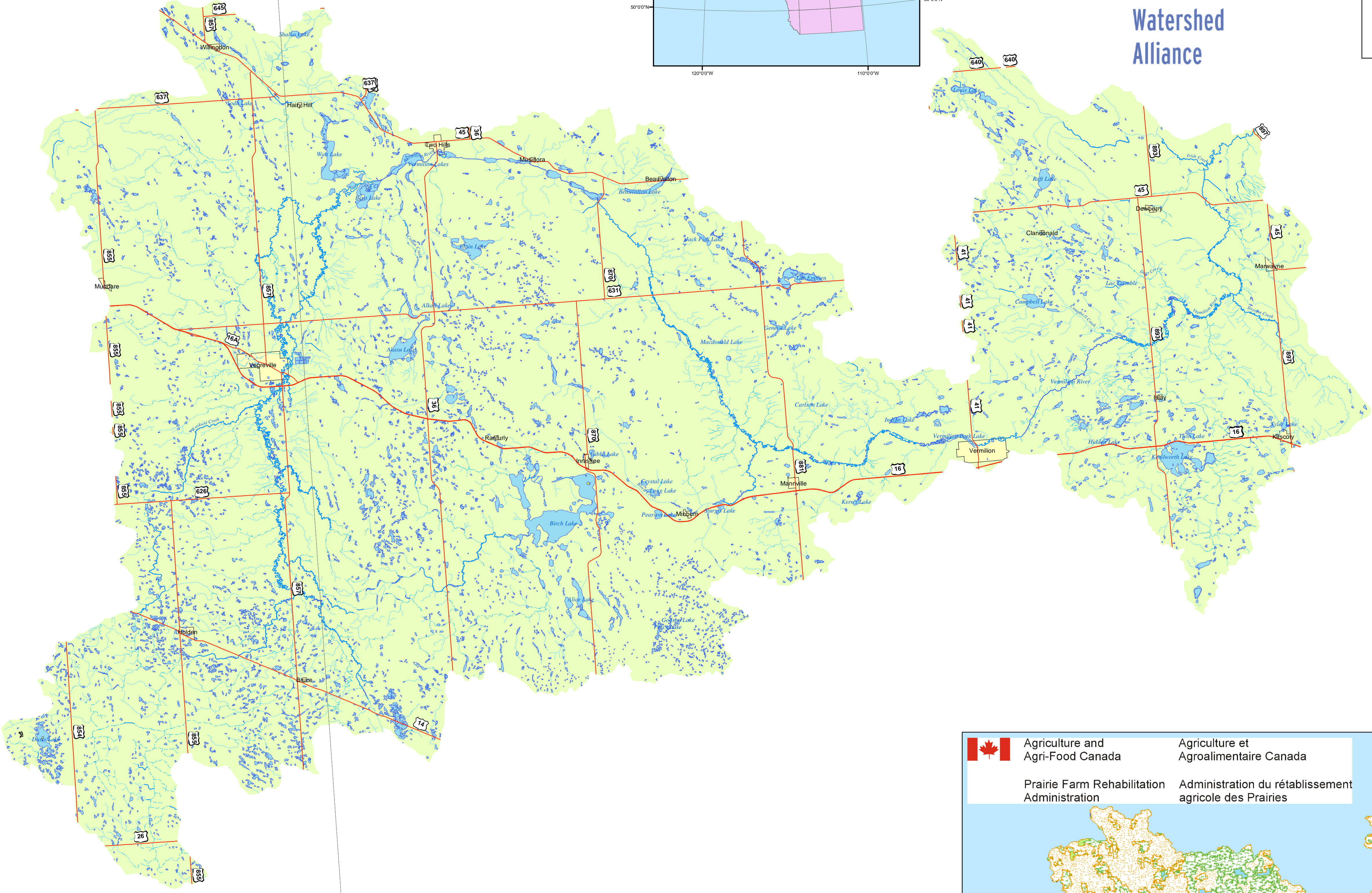
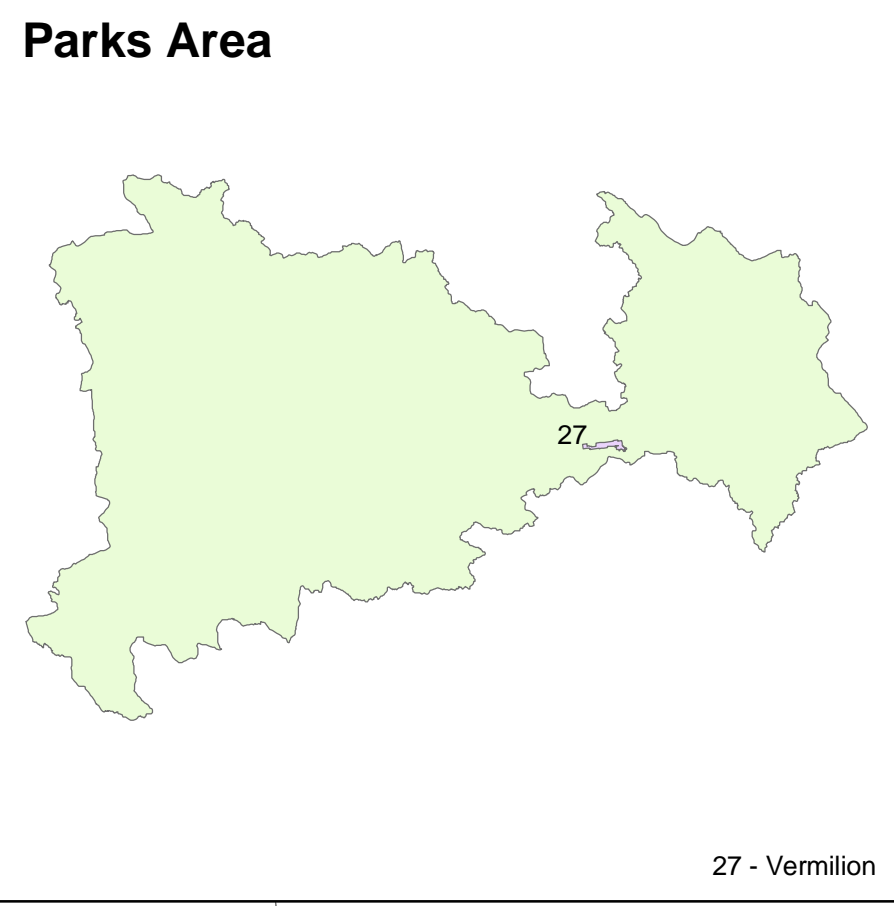
Industrial, Commercial and Municipal Disturbance



Linear Disturbance



North Saskatchewan Watershed Alliance



Disclaimer: This digital data may contain errors and omissions. Agriculture and Agri-Food Canada makes no representations or warranties whatsoever as to the accuracy and content of these files and accepts no responsibility for any damage, claims or liability whether direct or indirect, that result from their use.

Vermilion Subwatershed
UTM Zone 11, Datum NAD83

Map created: April 20, 2004
Created By: Paul Elliott
Timberline Forest Inventory Consultants

Hiley, J.C. and W. Lindwall. (October 1998). Land-based Census of Agriculture in Canada (as reprocessed by farm headquarters) to the Soil Landscapes of Canada map. Version 1.0 in the Prairie Region with variable roads from the 1996 Census. (Dataset). Based on: Statistics Canada, 1996 Census of Agriculture custom tabulation.