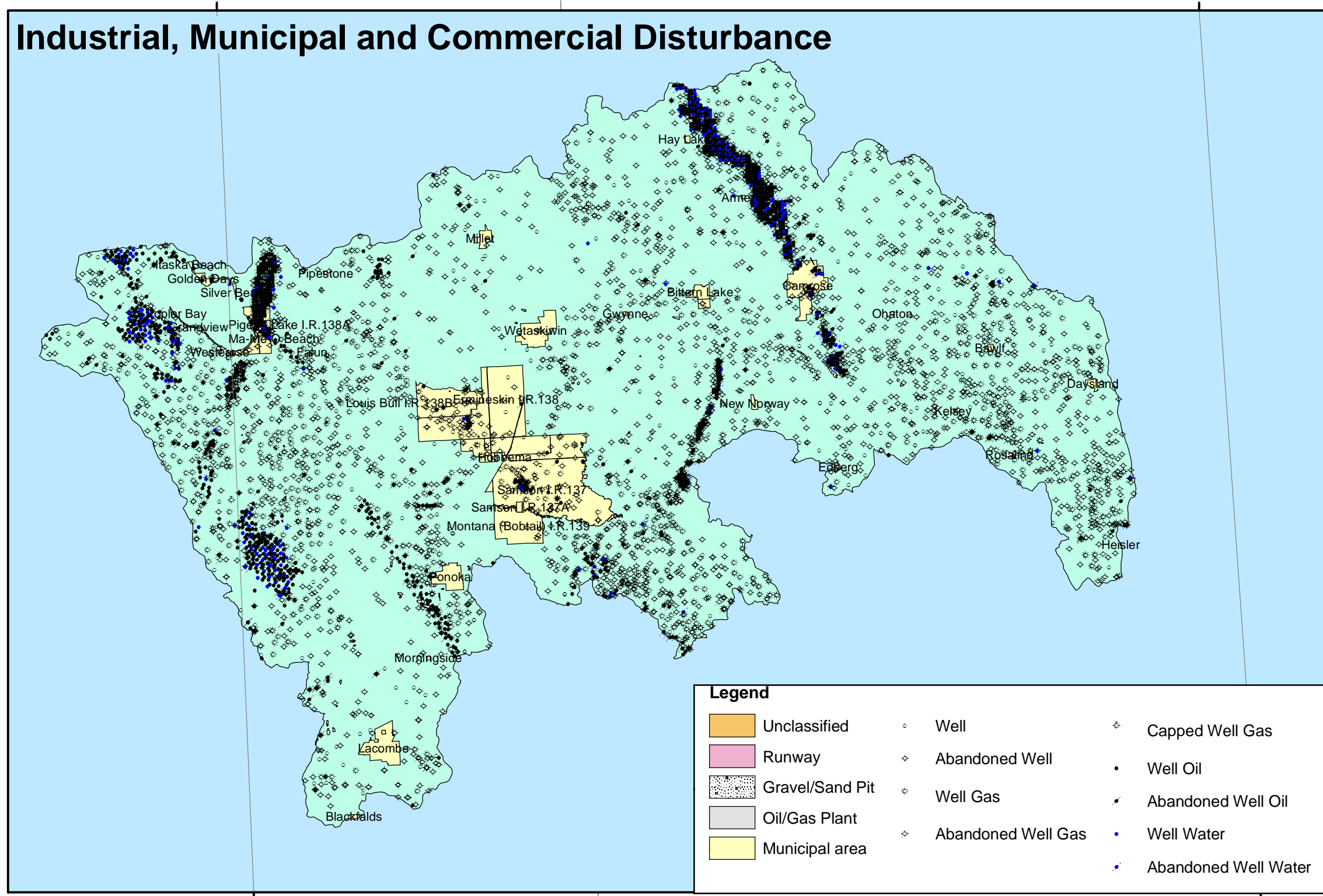
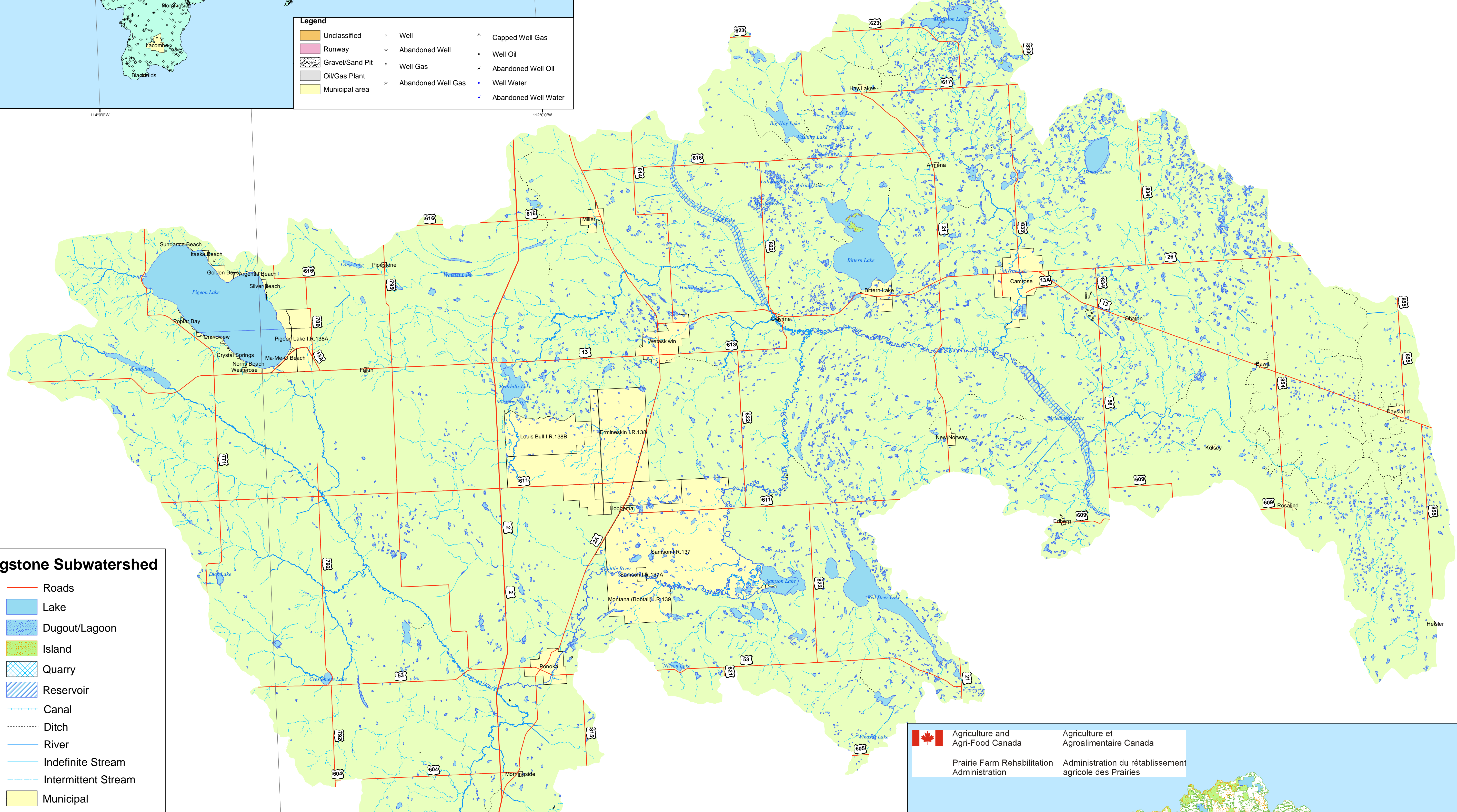
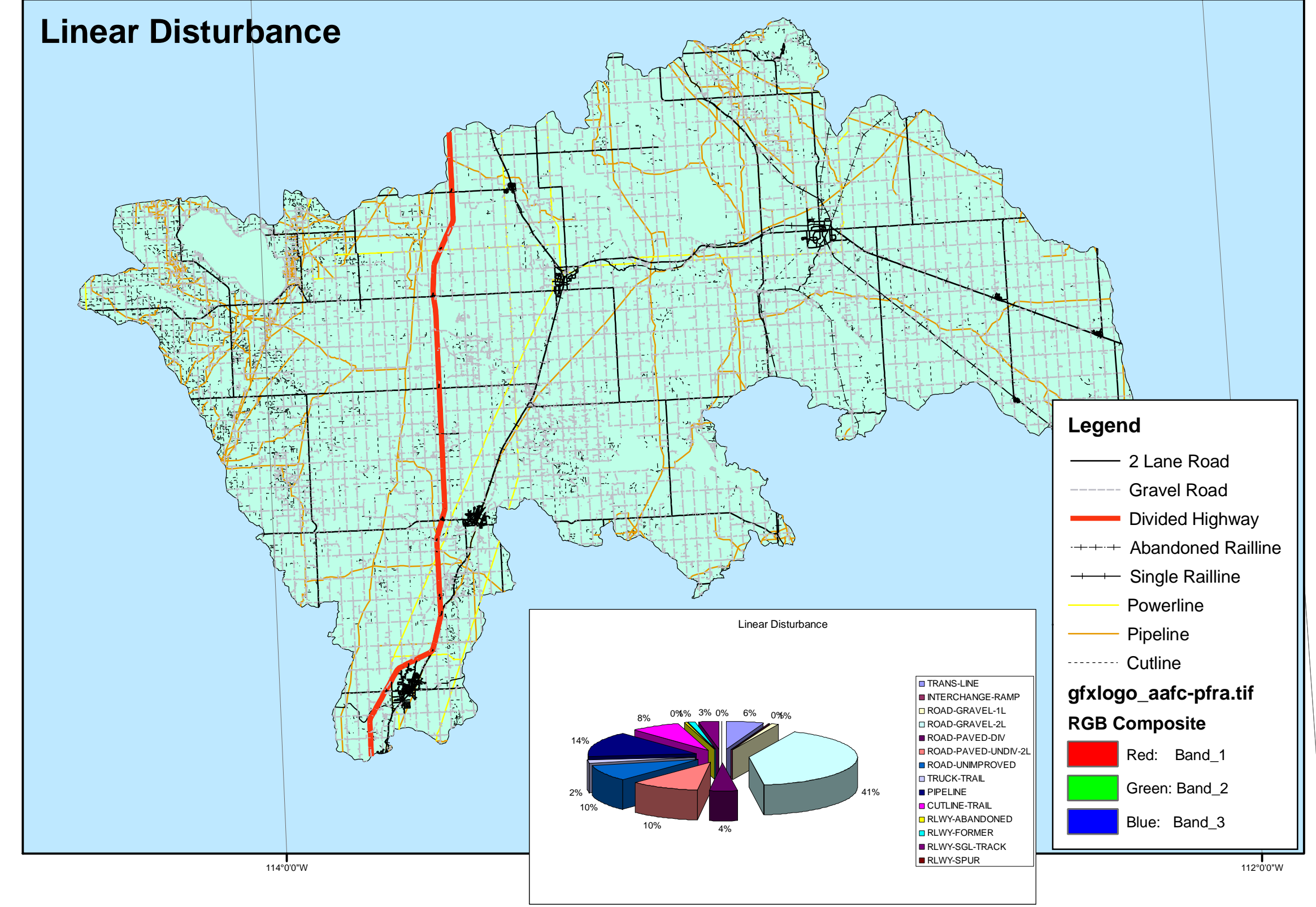


# Bigstone Hydrological Overview

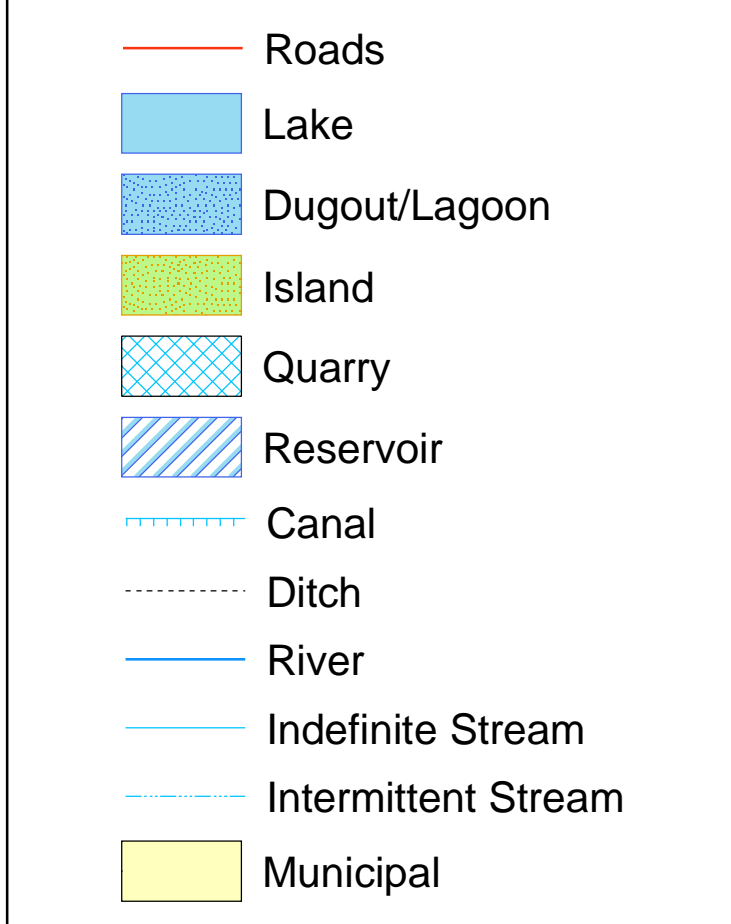
## Industrial, Municipal and Commercial Disturbance



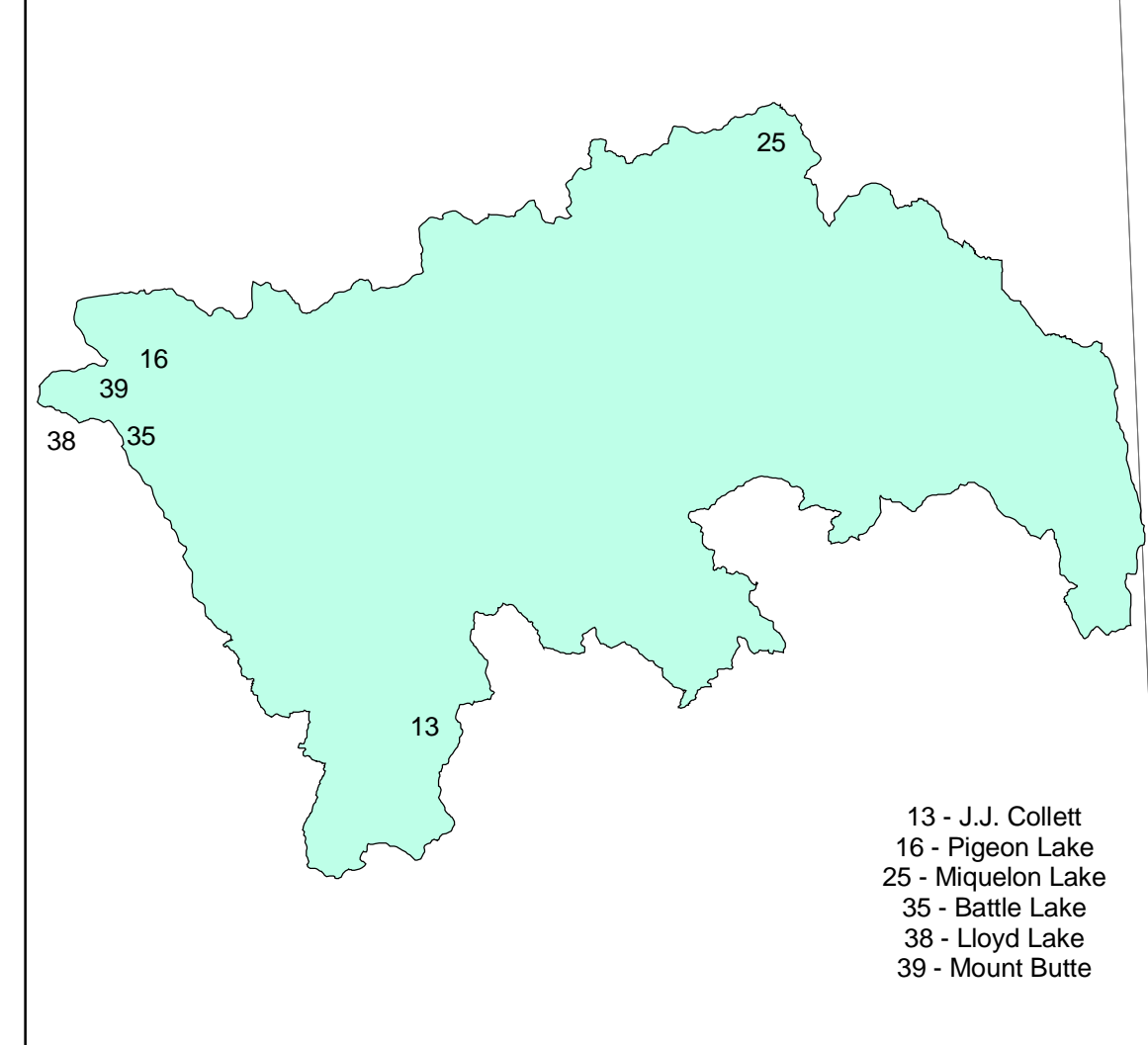
## Linear Disturbance



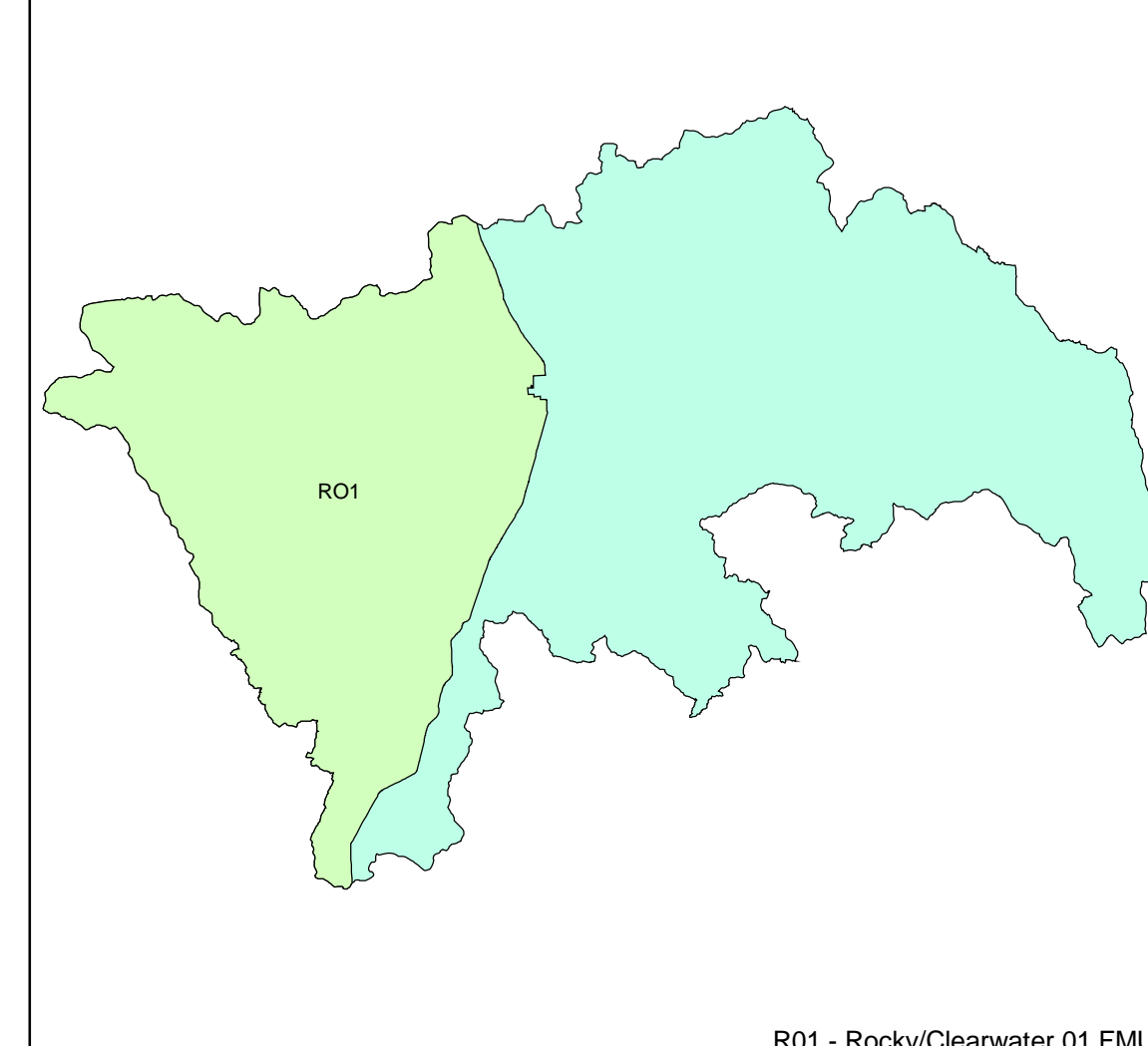
## Bigstone Subwatershed



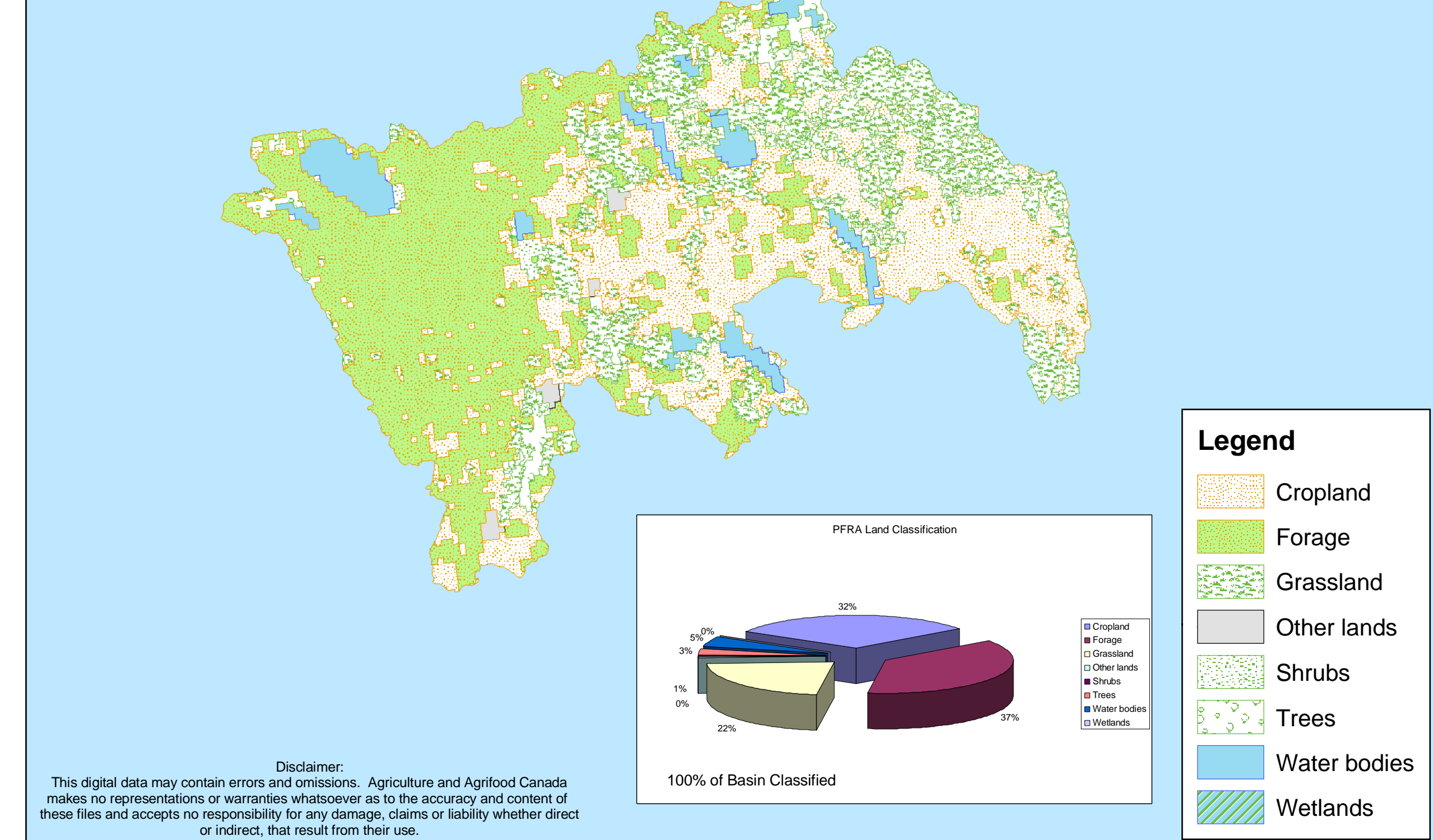
## Parks and Natural Areas



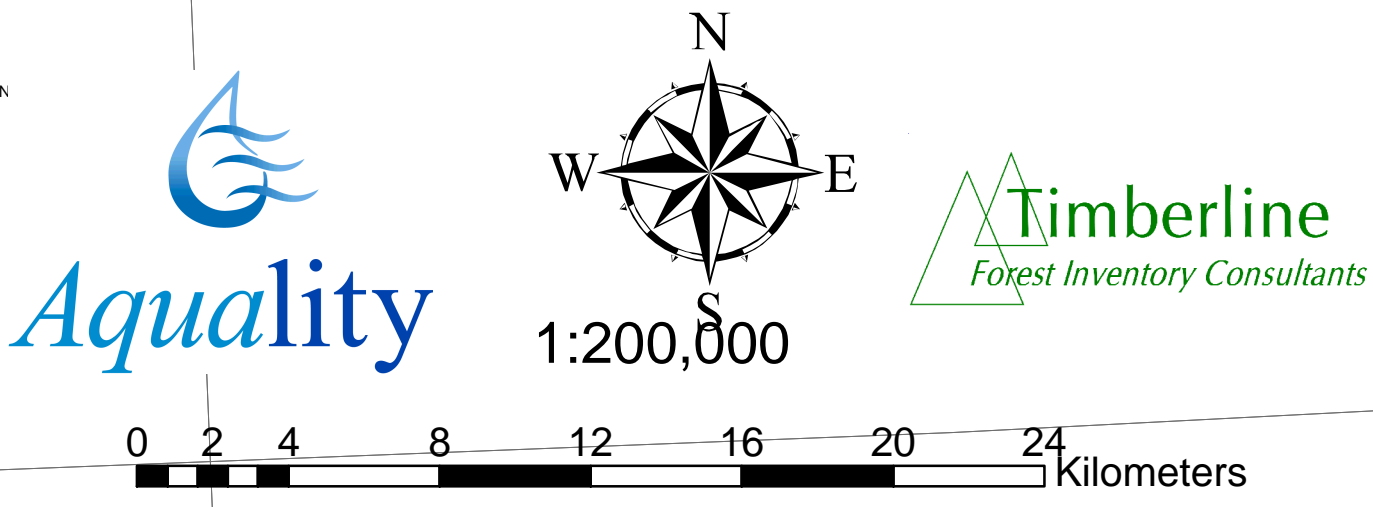
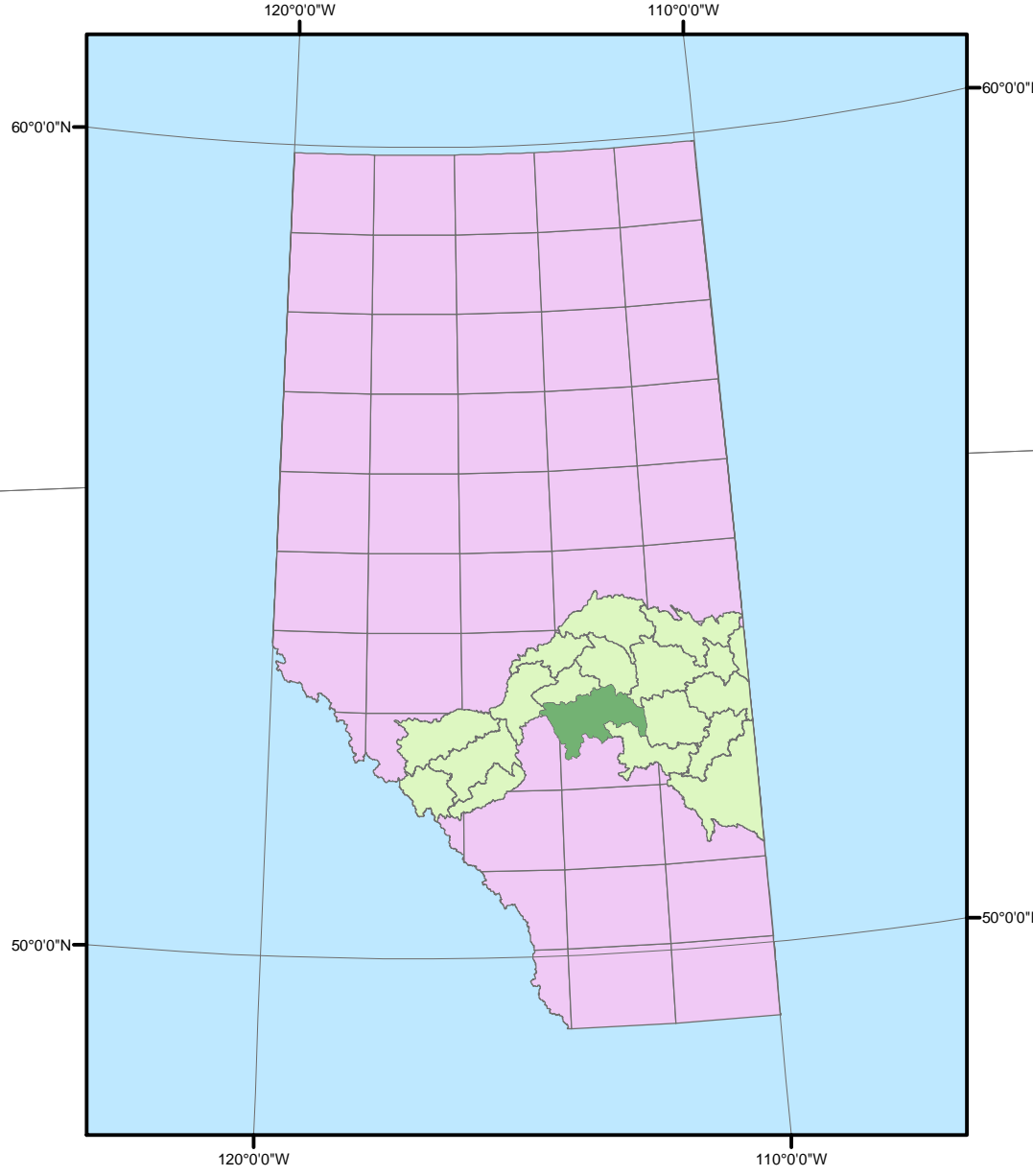
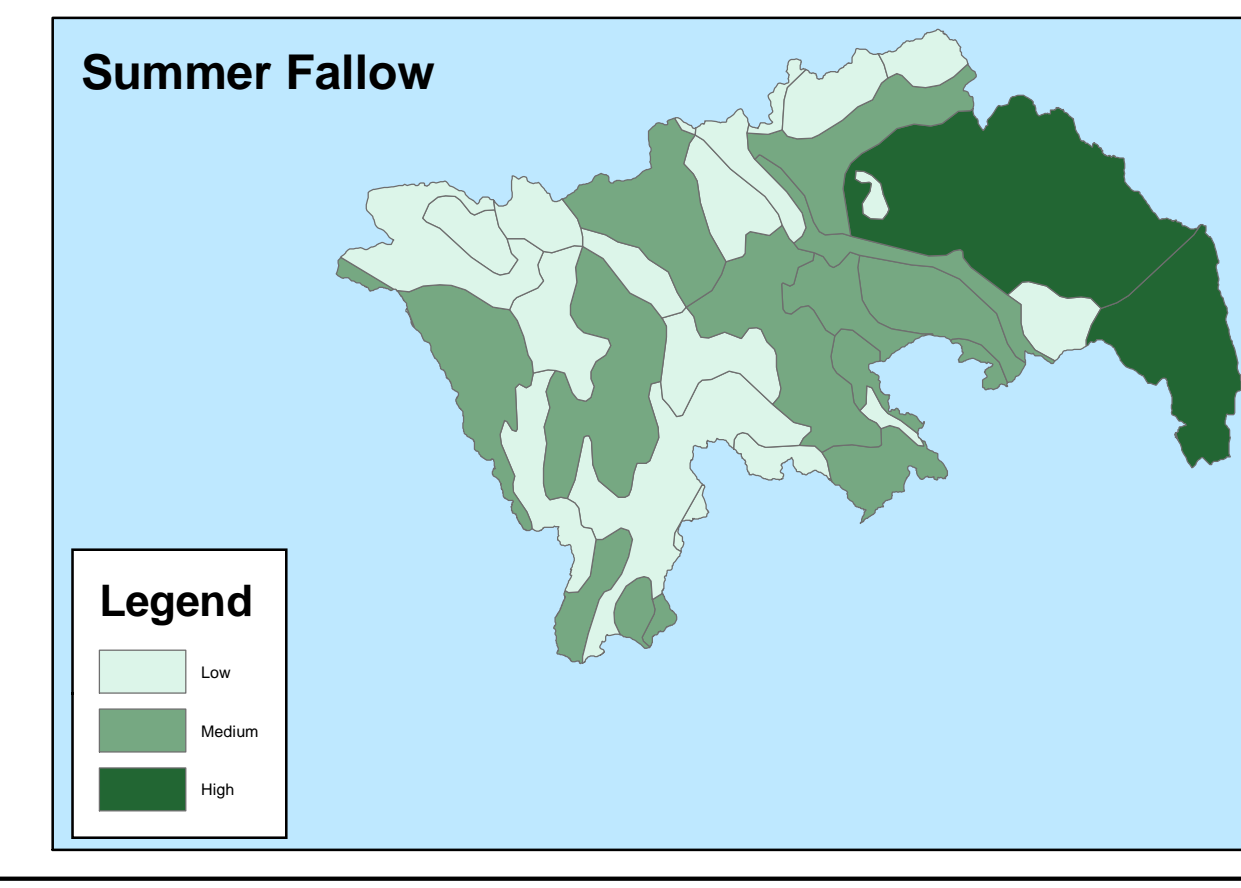
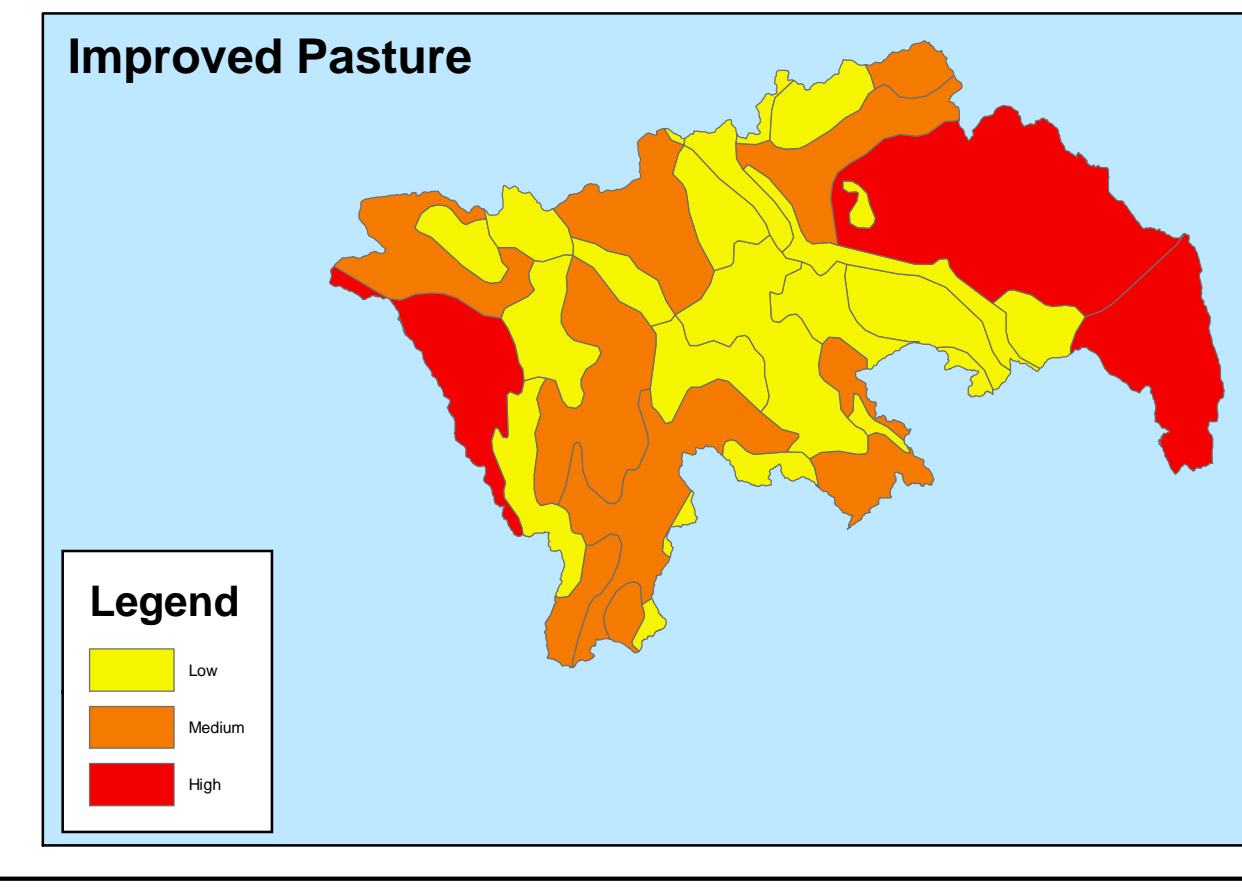
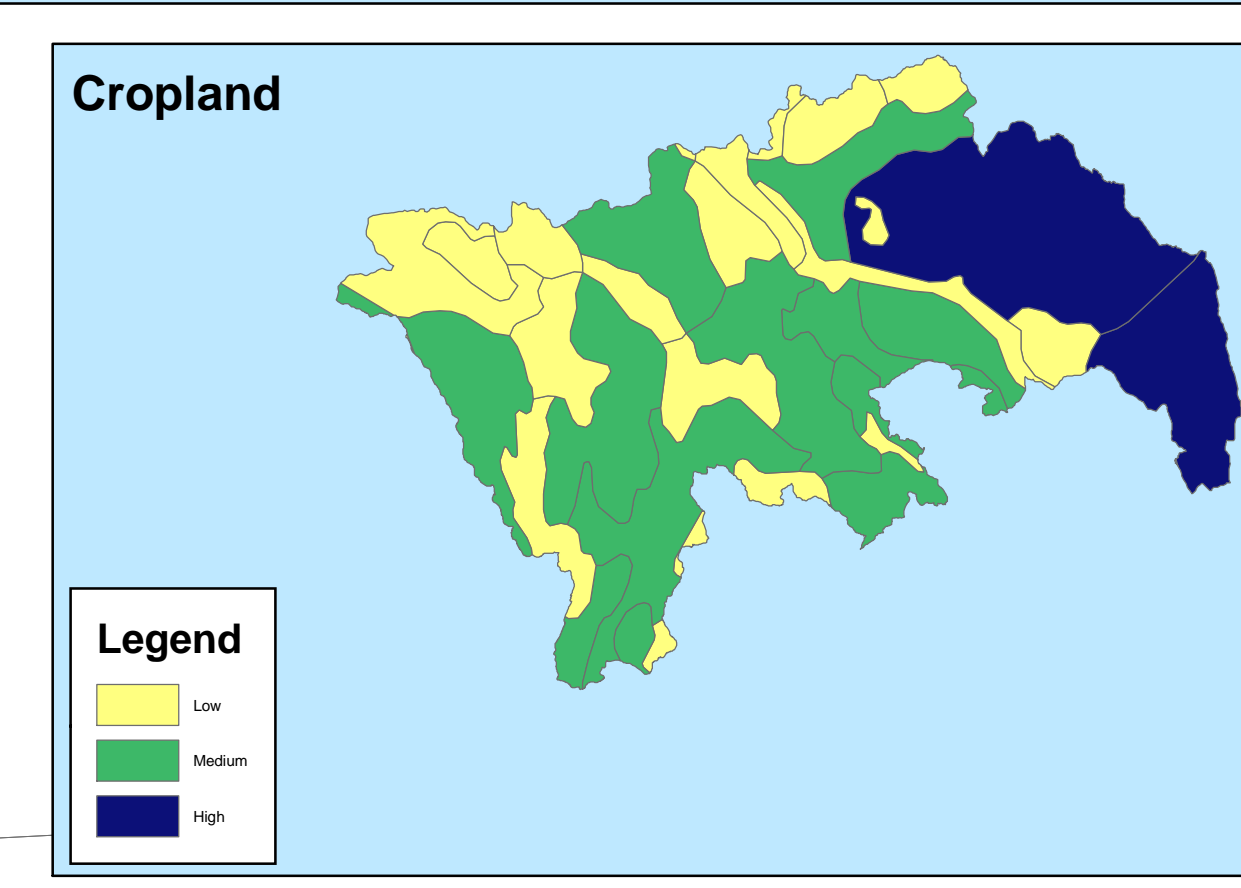
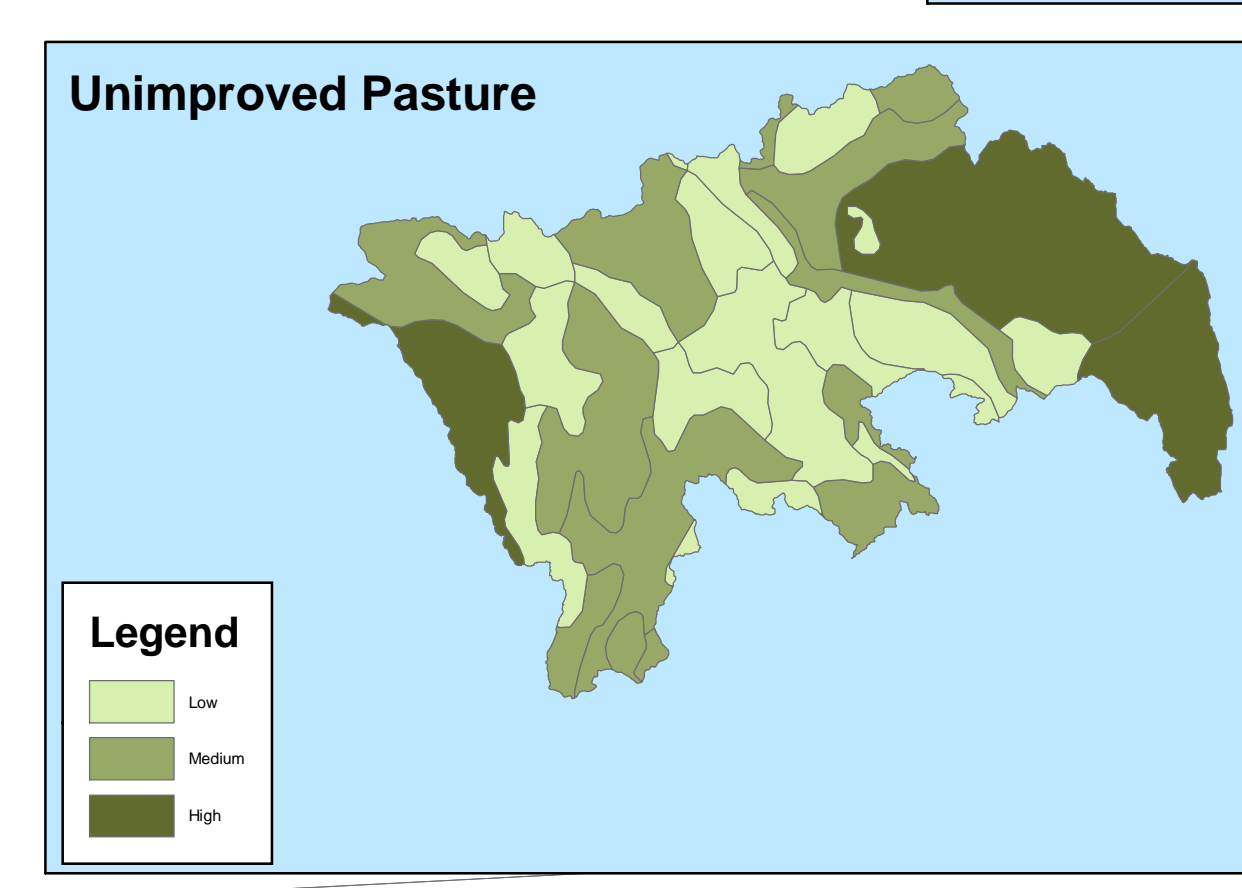
## Forest Management Units



## Prairie Farm Rehabilitation Administration



Bigstone Subwatershed  
UTM Zone 11, Datum NAD83  
Map created: April 5, 2004  
Created By: Paul Elliott  
Timberline Forest Inventory Consultants



Hiley, J.C. and W. Lindwall, (October 1998). Land-based Census of Agriculture in Canada (as reprocessed by farm headquarters to the Soil Landscapes of Canada map, Version 1.9 in the Prairie Region with variable totals from the 1996 Census). (Diskette). Based on: Statistics Canada, 1996 Census of Agriculture custom tabulation.