

## Introduction

- Coke is a porous material produced from coal, with a higher carbon content and fewer impurities, used mainly as a support in iron production. It is produced by heating metallurgical coal to high temperatures in the absence of oxygen [1,2].
- Coke characteristics and quality affect performance in the blast furnace and the quality of the iron.
  - Weight loss when reacting with CO<sub>2</sub> at high temperatures should be low [1].
  - Total porosity is low in strong cokes [3].
  - The content of graphitic carbon compared to disoriented carbon is generally higher in a good coke [4].
- The objective of this research is to characterize various coke samples. In broad, this is done in order to screen coke quality on a smaller scale and in a more cost effective manner than industrial scale testing.

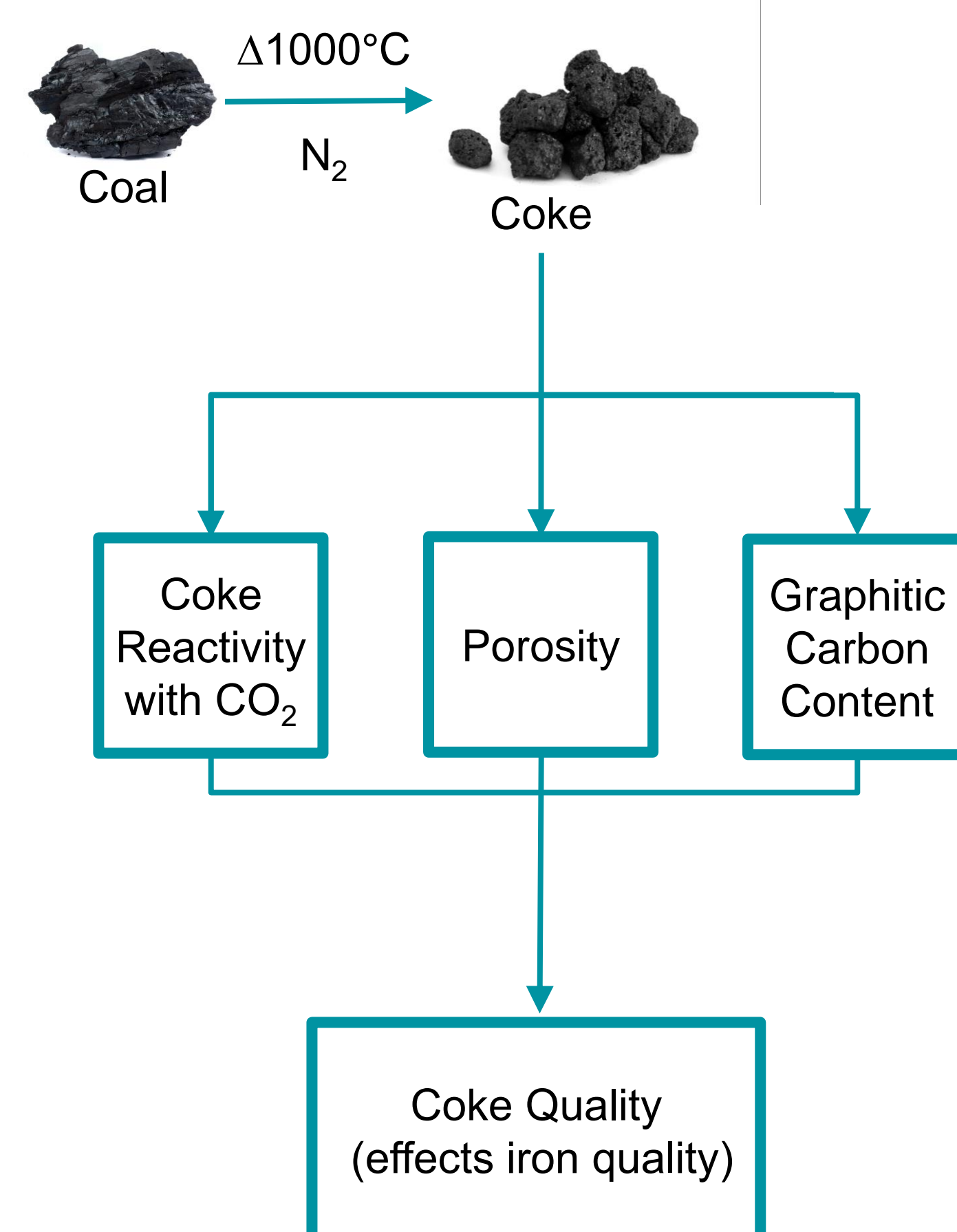


Figure 1: Coke characterization

## Raman Spectroscopy

- Raman Spectroscopy was used to observe the inelastic scattering of light from the sample's molecules.
- The contents of graphitic carbon and disoriented carbon were compared.



Figure 4: Raman Spectroscopy

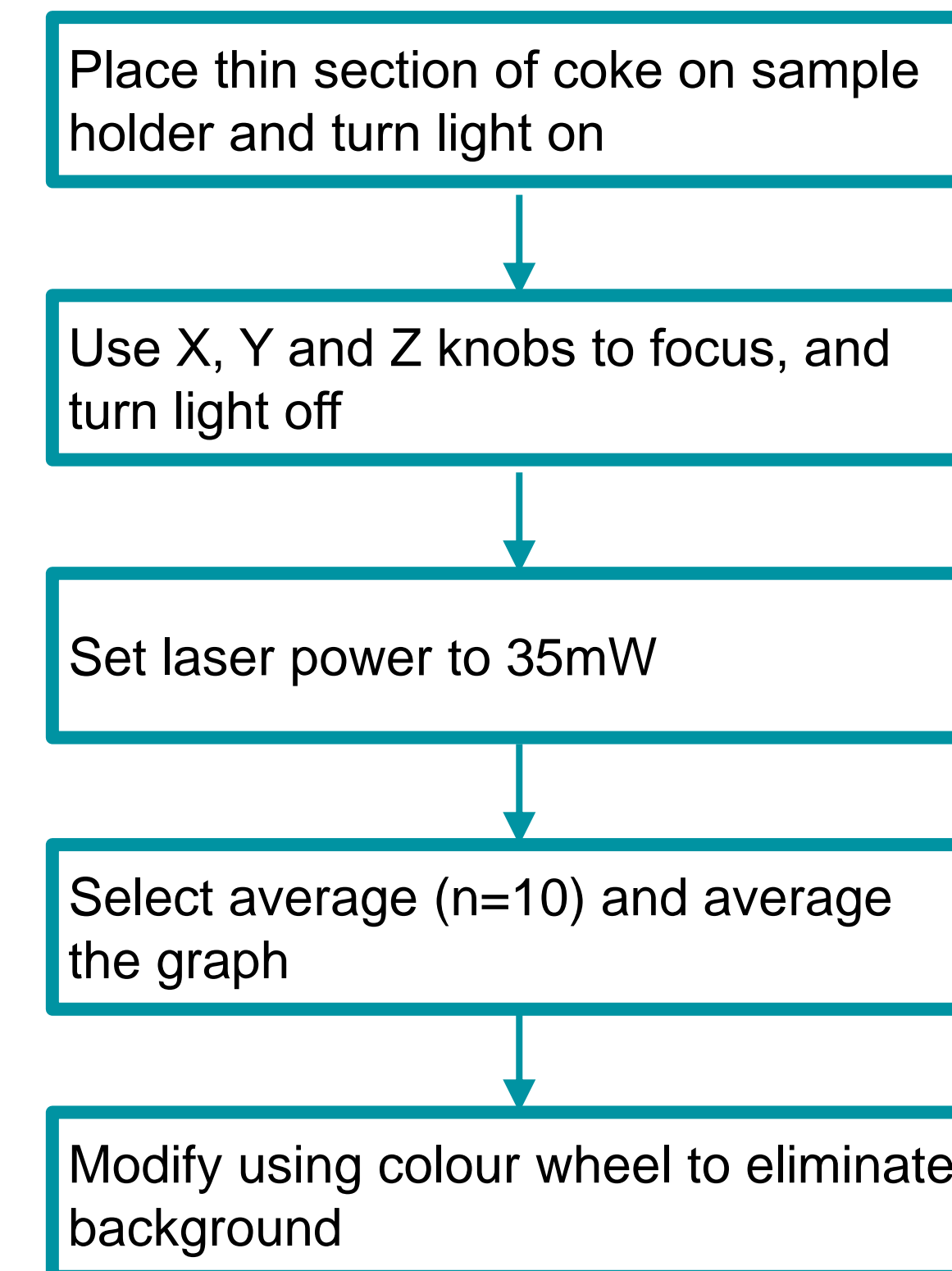


Figure 5: Raman Spectroscopy procedure

## Results

### CO<sub>2</sub> Gasification Mass Vs Time Plot

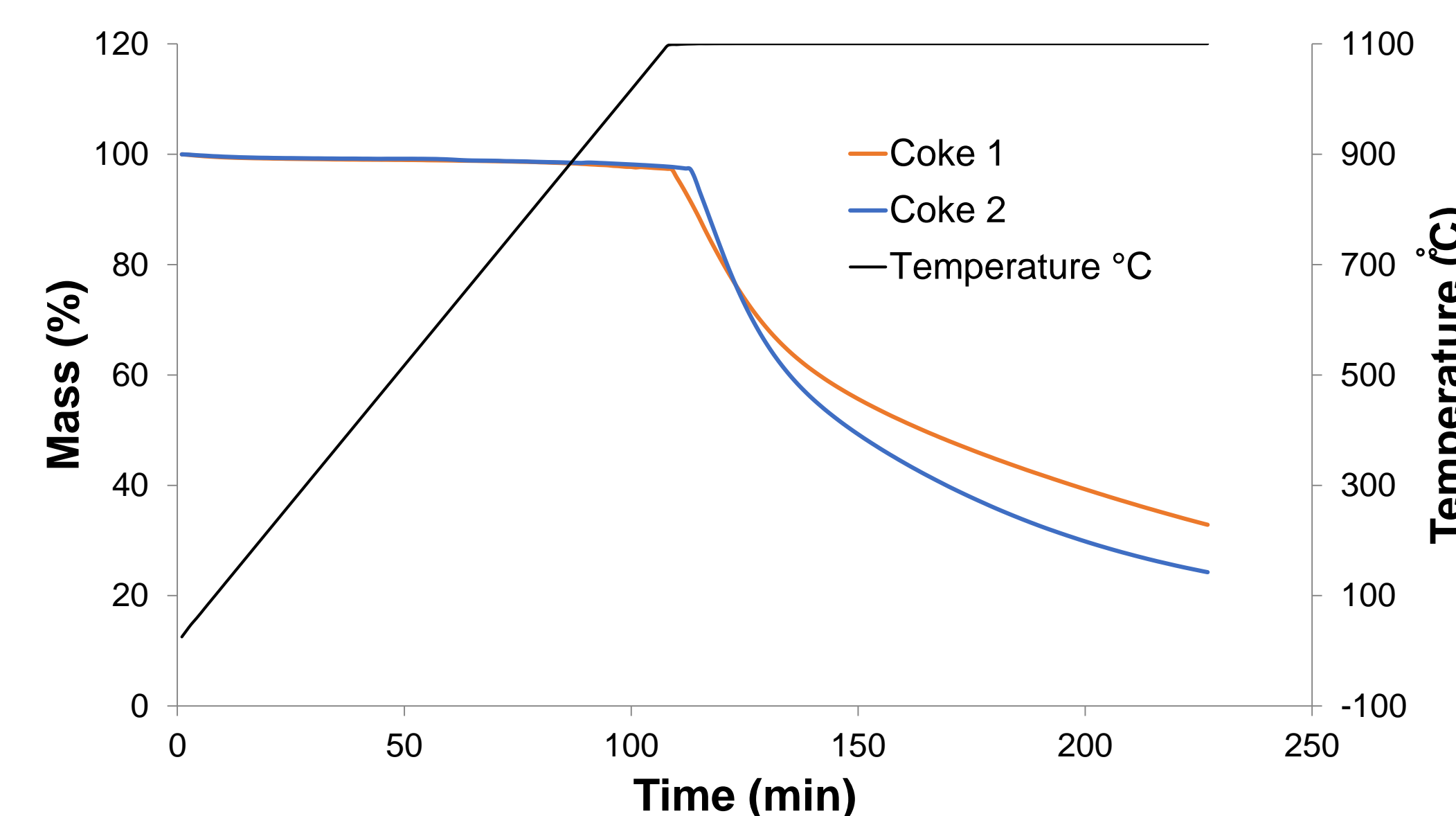


Figure 6: TGA plot of weight loss behaviour while reacting with CO<sub>2</sub>

Sample	Total mass loss (%)	Mass loss (%) during isothermal period at 1100°C
Coke 1	67.5	75.3
Coke 2	75.8	88.7

Coke 1 lost less mass, and mass loss was slower than coke 2.

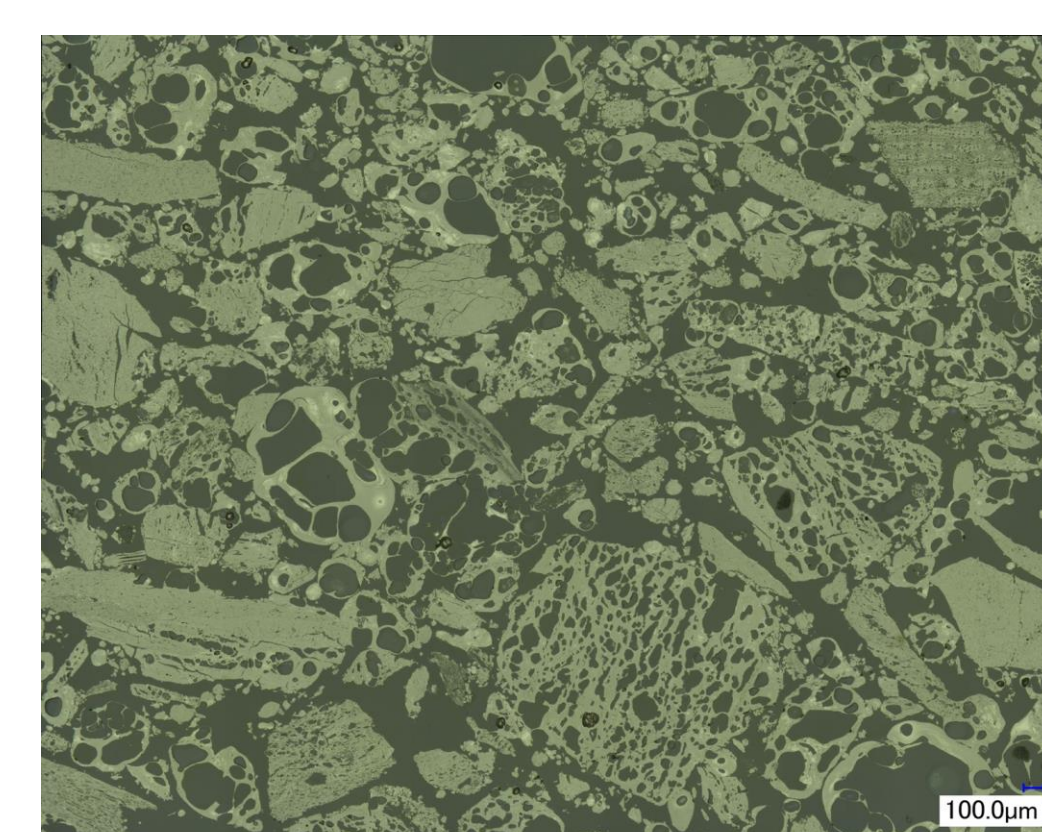


Figure 7a: Microscope image of coke 1 (25X magnification)

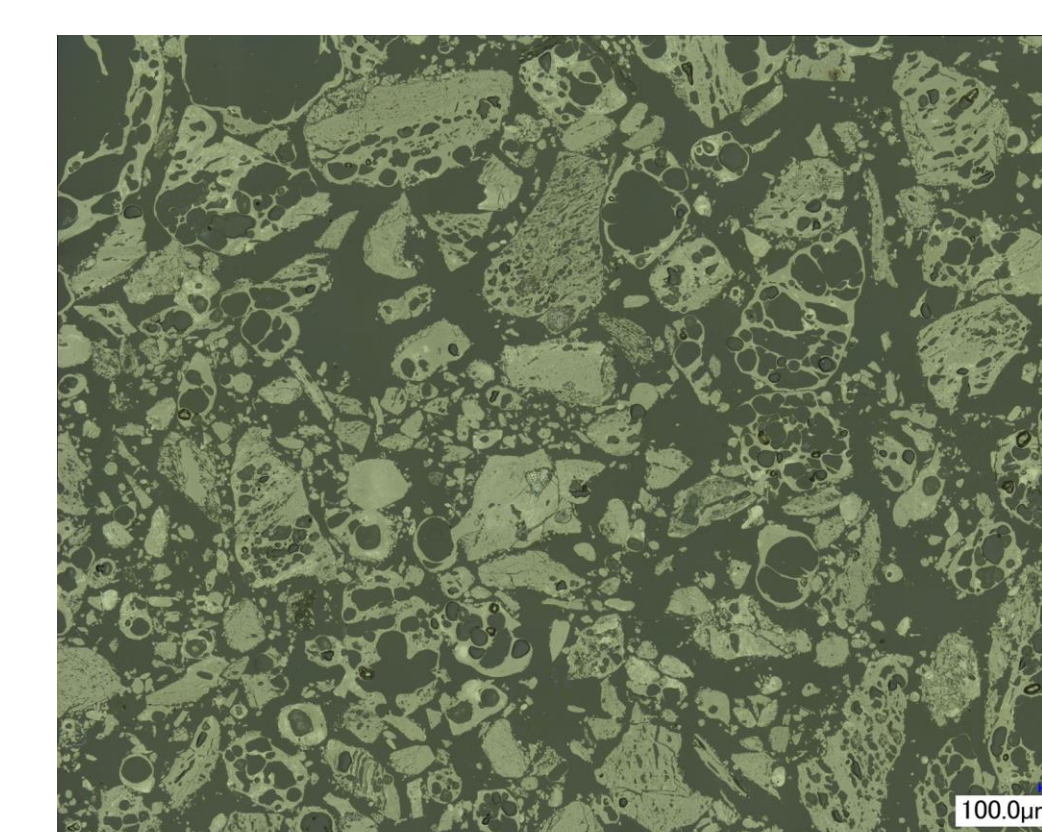


Figure 7b: Microscope image of coke 2 (25X magnification)

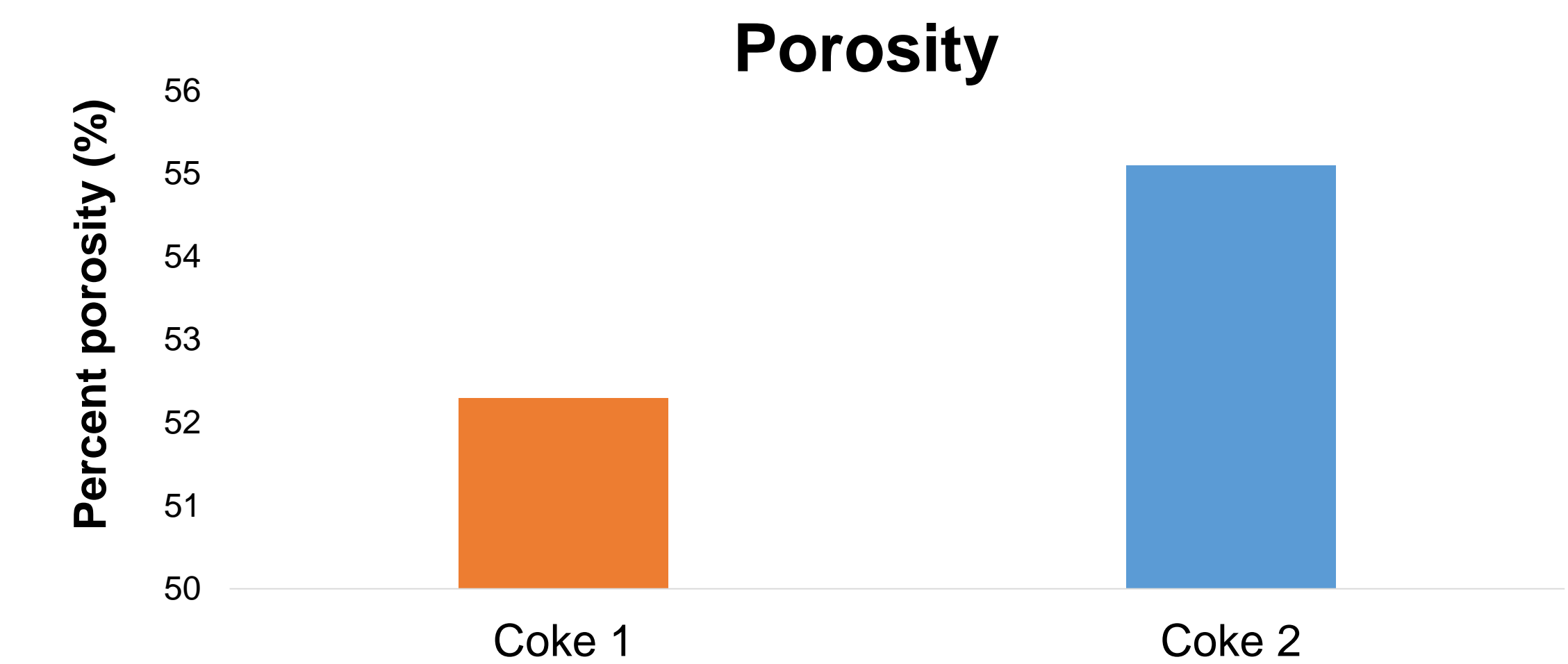


Figure 8: Percent porosity of samples

Coke 1's total porosity is less than that of coke 2.

### Raman Spectra

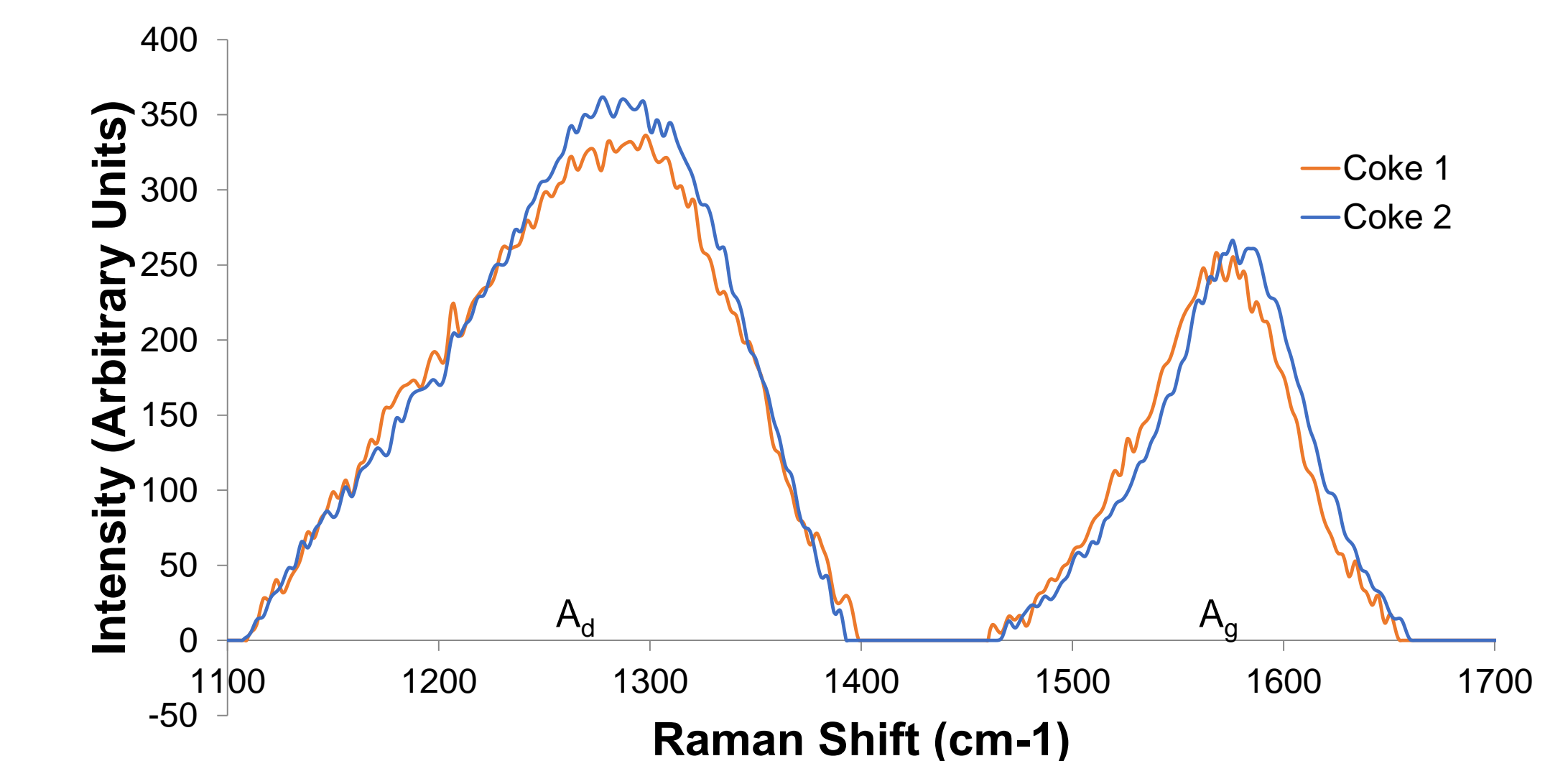


Figure 9: Raman spectra of samples showing disoriented and graphitic carbon

Sample	Area under Disoriented Carbon Peak (A <sub>d</sub> )	Area under Graphitic Carbon Peak (A <sub>g</sub> )	Ratio of Graphitic Carbon (A <sub>g</sub> /(A <sub>d</sub> +A <sub>g</sub> ))
Coke 1	54352	22359	0.291
Coke 2	55914	22231	0.284

Coke 1 has a higher graphitic carbon content compared to the total carbon than coke 2.

## Conclusions

- Coke 1 lost less mass, and mass loss was slower than coke 2 when reacting with CO<sub>2</sub> (at 1100°C for 2 hours).
- Coke 1 has a higher graphitic carbon content than coke 2.
- Coke 1 is less porous than coke 2.
- Coke 1 is a higher quality coke than coke 2 as it is less reactive with CO<sub>2</sub>, a lower porosity and has a higher graphitic carbon content.

## Acknowledgements

- This research was possible due to the contributions of my sponsor, NSERC PromoScience, and the facilitation of the WISEST Summer Research Program.
- Thanks go out to Professor R. Gupta's research group for their continued support throughout this research.

## References

- [1] Diez, M.A., Alvarez, R., & Barriocanal, C. (2002). Coal for metallurgical coke production: predictions of coke quality and future requirements for cokemaking. *International Journal of Coal Geology*, 50(1), 389-412. [https://doi.org/10.1016/S0166-5162\(02\)00123-4](https://doi.org/10.1016/S0166-5162(02)00123-4)
- [2] Geerdes, M., Toxopeus, H., & van der Vliet, C. (2009). *Modern blast furnace ironmaking: An introduction*. Retrieved from <https://www.scopus.com/home.uri>
- [3] Patrick, J.W., & Walker, A. (1989). Macroporosity in cokes: Its significance, measurement, and control. *Carbon*, 27(1), 117-123. [https://doi.org/10.1016/0008-6223\(89\)90164-4](https://doi.org/10.1016/0008-6223(89)90164-4)
- [4] Rantitsch, G., Bhattacharyya, A., Schenk, J., & Lünsdorf, N. K. (2014) Assessing the quality of metallurgical coke by Raman spectroscopy. *International Journal of Coal Geology*, 130, 1-7. <https://doi.org/10.1016/j.coal.2014.05.005>

## Methodology

### Thermogravimetric Analysis

- In order to study the weight loss behaviour of coke, thermogravimetric analysis (TGA) was carried out with CO<sub>2</sub> at 1100°C for 2 hours.
- From the TGA plot, weight loss over time was observed and total weight loss was calculated.



Figure 2: TGA SDT Q600 instrument

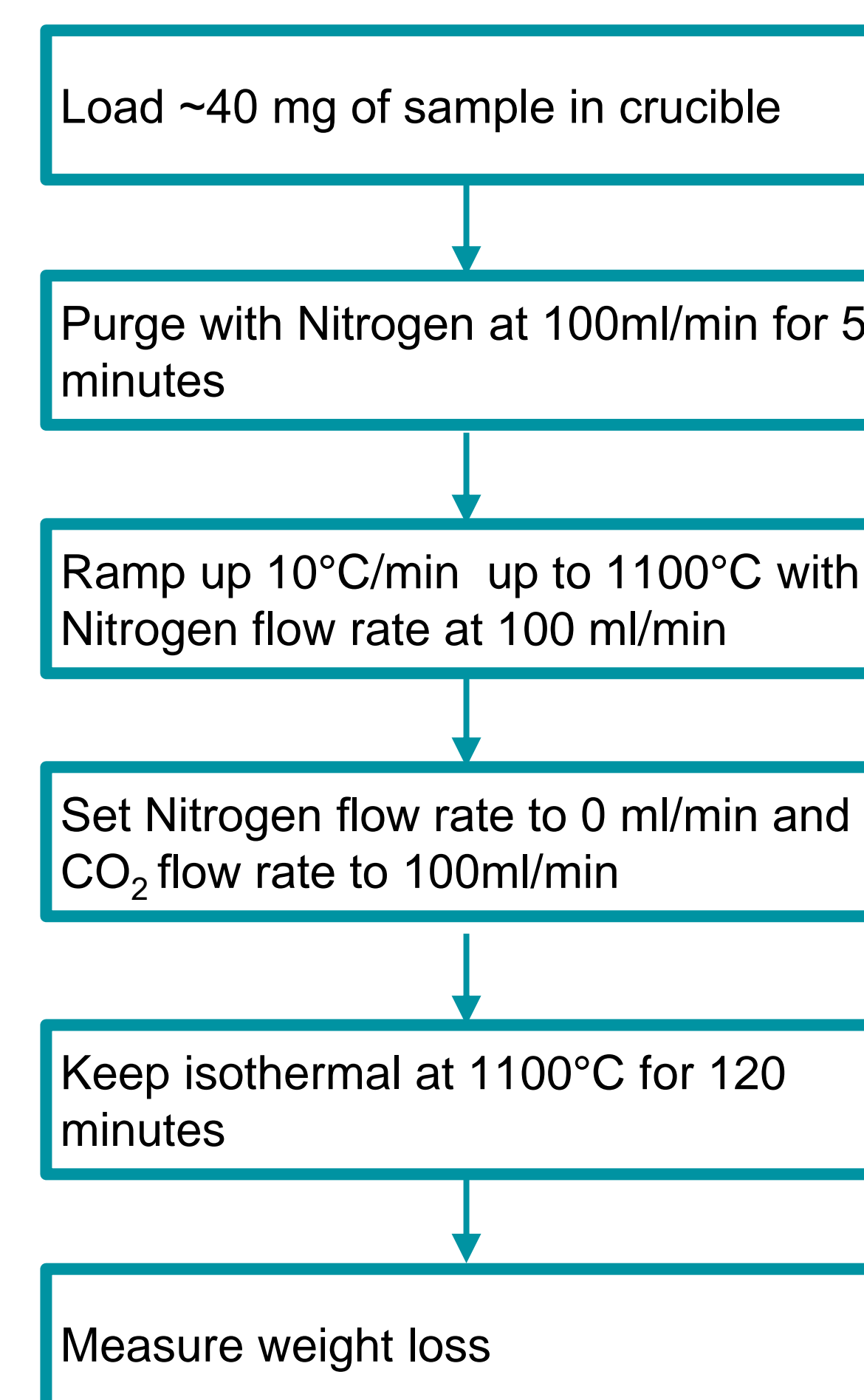


Figure 3: TGA experimental procedure