

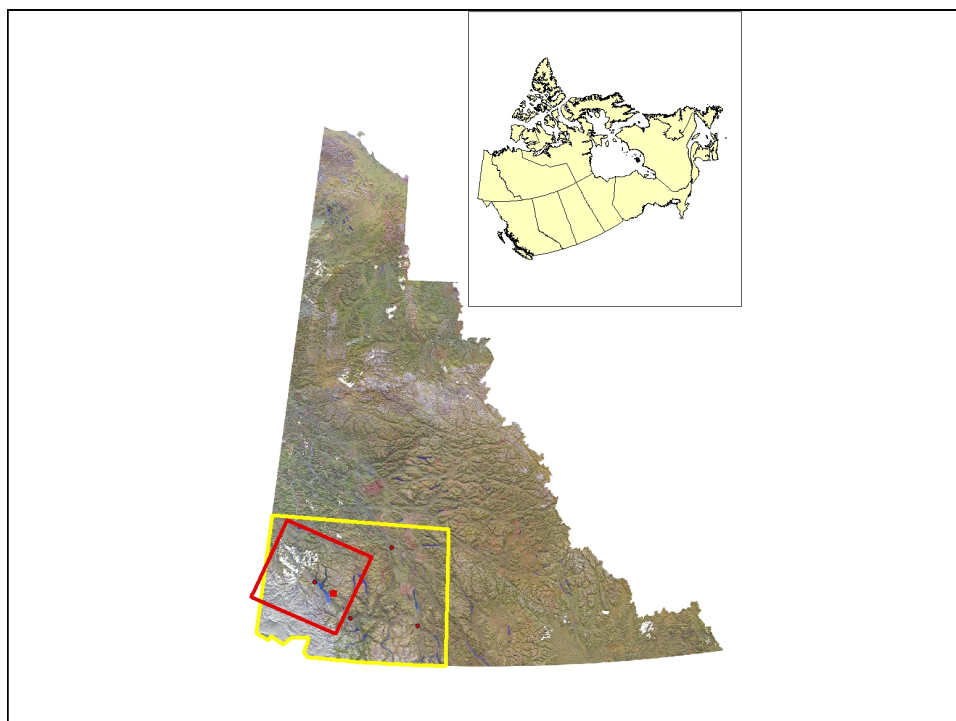
Campus Data Summit 2012

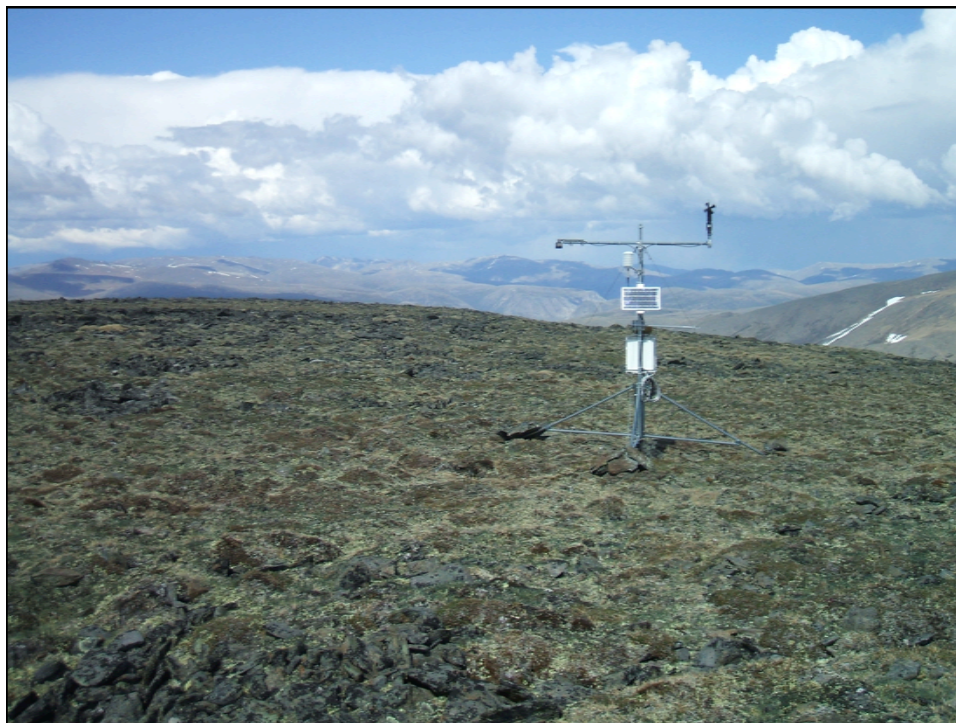
Perspectives on Large Volume & Diverse
Data Sets

Tundra and Climate Interactions in the
Southwest Yukon

Scott Williamson
David Hik
John Gamon

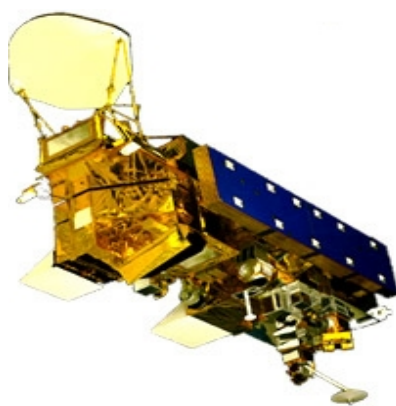
Department of Biological Sciences
University of Alberta
March 22-23, 2012





MODIS

- 36 channels ranging from VIR to LWIR
- Raster grids of 250, 500, 1000 meters
- Daily overpass
- Data provided as raw or pre-processed product
- Products packaged as daily, 8 day or 16 day composites
- Sinusoidal Projection



<http://www.esl.lsu.edu/satellites/images/aqua.jpg>



Data

- Range of formats from text to numeric arrays
- Multiple files which are to but used ensemble
- Often raw data is accompanied by meta-data which is descriptive and potentially searchable (e.g. xml)
- Algorithms which 'describe' processing steps, in the form of computer code
- Raw data ➡ Intermediates ➡ Final product

Concerns

- **Compatibility & Continuity**
 - Ensure that ancillary programs and structures are archived
- **Access to data that is currently free**
 - Current climate of free data
 - Which data to store?
- **Storage of data and products as part of the scientific method**