

# Shaping CIHR-IHSPR's 2020-2025 Strategic Plan

*Town Hall, University of Alberta*

**Dr. Rick Glazier**

**Scientific Director, CIHR Institute of Health Services and Policy Research**

**Dr. Meg McMahon & Dr. Jessica Nadigel**

**Associate Directors, CIHR Institute of Health Services and Policy Research**

**Mr. Tim Murphy**

**Vice President, Health, Alberta Innovates**

**February 13, 2020**



# Agenda

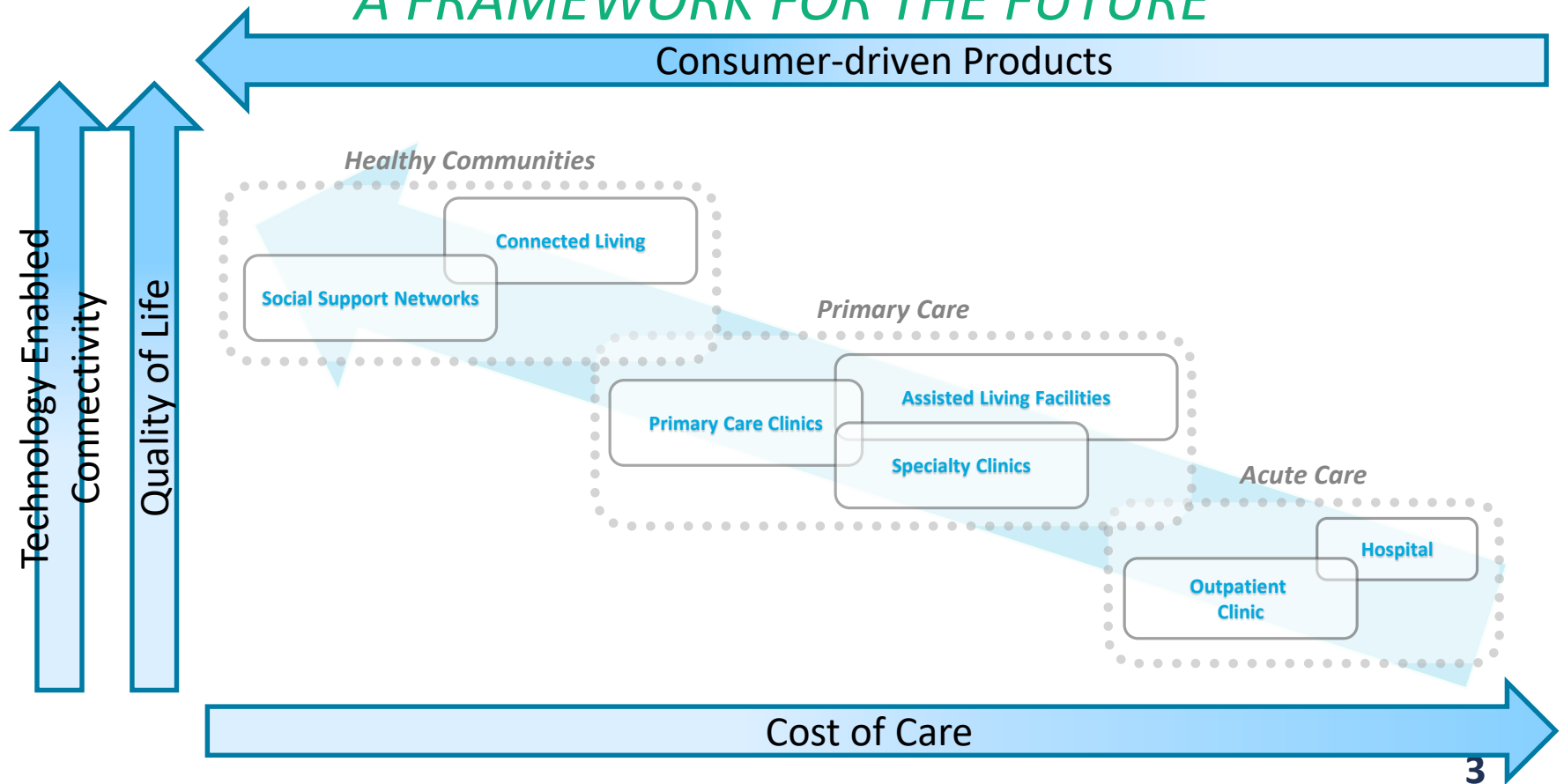


- Background: About CIHR and IHSPR
- IHSPR strategic planning: context and process
- Engagement questions



# Health Business Unit

## A FRAMEWORK FOR THE FUTURE





# About CIHR

**Canadian Institutes of Health Research (CIHR) is Canada's health research investment agency with an annual budget of \$1 billion.**

CIHR's mandate is to excel, according to internationally accepted standards of scientific excellence, in the creation of new knowledge and its translation into improved health for Canadians, more effective health services and products and a strengthened Canadian health system.





# Four Pillars of Research





# CIHR funds two streams of research

## Investigator-Initiated Research

Formerly Open Operating  
Grants Program (OOGP)

Any area of health  
research

~ 70% total funding

e.g. Project Scheme, CIHR  
Fellowship and Training Awards

## Priority-Driven Research

Strategic areas identified  
by Institutes, Branches,  
in consultation with  
partners & stakeholders

~ 30% total funding

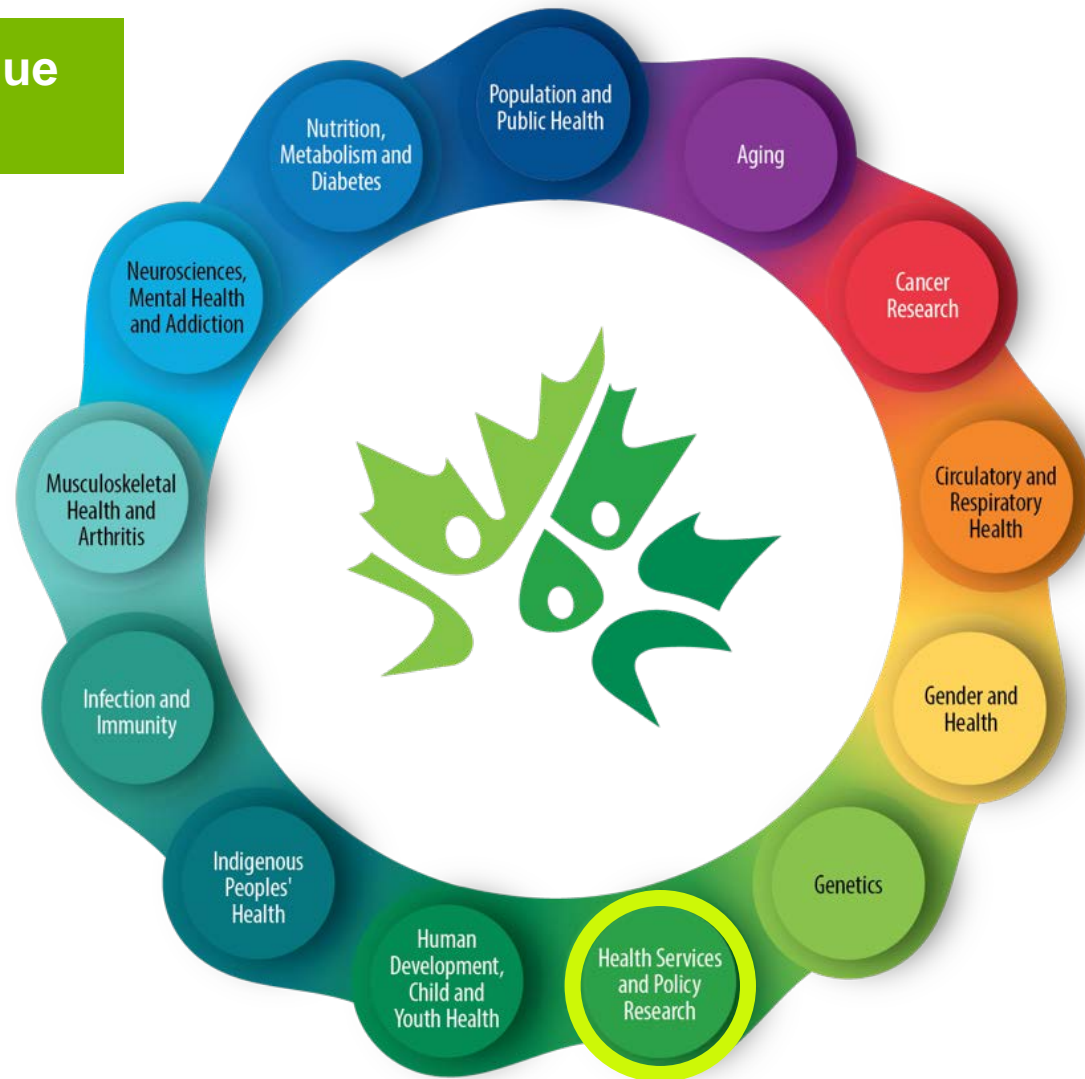
e.g. Institutes, multi-institute  
initiatives, single institute initiatives  
(e.g., SPOR, CBPHC, Transitions in  
Care, eHealth Innovations)



# 13 CIHR Institutes

Created in 2000, CIHR is a unique model for health research.

CIHR has 13 virtual Institutes, each dedicated to a specific area of focus, that link and support researchers pursuing common goals within their mandate area.



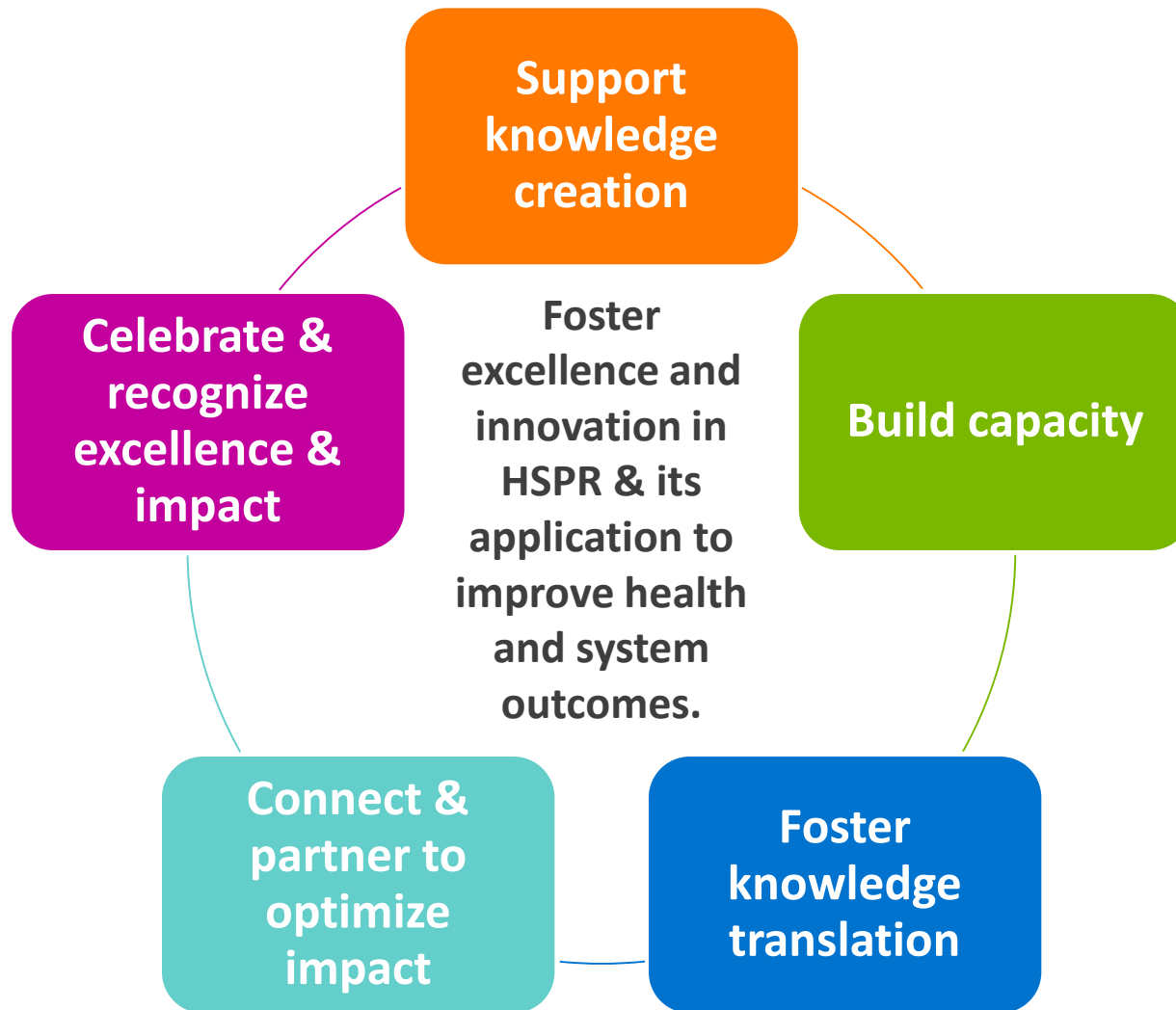


# IHSPR Mandate

The Institute of Health Services and Policy Research (IHSPR) is dedicated to supporting innovative research, capacity-building and knowledge translation initiatives designed to improve the way health care services are organized, regulated, managed, financed, paid for, used and delivered, in the interest of improving the health and quality of life of all Canadians.



# What we do and why





# We do this with the advice of our Institute Advisory Board

## IHSPR Institute Advisory Board Members



**Stirling Bryan (Chair)**  
Director  
Centre for Clinical  
Epidemiology & Evaluation  
Vancouver Coastal Health  
Research Institute



**Tom Noseworthy**  
President & CEO, British  
Columbia Academic Health  
Science Network



**Marcel Saulnier**  
Associate Assistant Deputy  
Minister  
Strategic Policy Branch  
Health Canada



**Anne Snowden**  
Professor, Strategy and  
Entrepreneurship  
Chair, World Health  
Innovation Network (WIN)  
University of Windsor  
Odette School of Business



**Vasanthi Srinivasan**  
Executive Director  
Ontario Strategy for  
Patient-Oriented Research  
(SPOR) SUPPORT Unit



**Ross Upshur**  
Head, Division of Clinical  
Public Health  
Dalla Lana School of Public  
Health



**Pamela Valentine**  
President & CEO  
MS Society of Canada



**Christina Weise**  
CEO  
Research Manitoba



**Katie Aubrecht**  
Canada Research Chair in  
Health Equity and Social  
Justice  
Assistant Professor in the  
Department of Sociology,  
St. Francis Xavier  
University



**Thomas Beaudry**  
Engagement and  
Reconciliation  
Community Coordinator,  
Department of  
Sustainable  
Development, Province  
of Manitoba



**Arlene Bierman**  
Director of Center for  
Evidence and Practice  
Improvement, Agency  
for Healthcare  
Research and Quality



**Antoine Groulx**  
Family Physician  
Full Professor,  
Clinical Medicine, Université Laval  
Clinical Lead, PULSAR



**Alies Maybee**  
Patient Partner  
Co-founder, Patient  
Advisors Network (PAN)



**Verna Yiu**  
President and CEO,  
Alberta Health Services



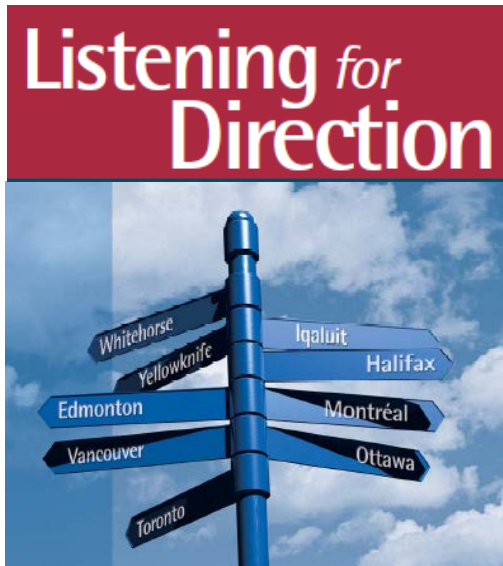
# And in partnership with other organizations





# IHSPR priorities through time

2000 - 2008



Health workforce • Timely access to care • Managing for quality & safety • Sustainable funding & ethical resource allocation • Governance & accountability • Managing & adapting to change • Understanding & responding to public expectations • Linking care across place, time & settings • Linking public health to health services

2009 - 2014



- Drug Policy
- Access to appropriate care across the continuum
- Health information
- Financing, sustainability, governance

2015 - 2019



- Learning Health Systems
- eHealth
- Healthy aging in the community
- Financing, funding, sustainability



# Examples of IHSPR funding programs



Health System Impact Fellowship



eHealth Innovations



Community Based Primary Health Care



Transitions in Care



# Examples of IHSPR Capacity Building and Community Recognition programs

Health System Impact Fellowship (deadline: April 2020)

Rising Star Award (deadline: February 12, 2020)

Travel Awards (deadline: March 5, 2020)

CAHSPR Student Poster Prize

Article of the Year Award (deadline: February 12, 2020)

Planning and Dissemination Grants (deadline: March 17, 2020)

<http://www.cihr-irsc.gc.ca/e/35097.html>



# IHSPR's Investments by Strategic Priority

**Institute  
Community  
Support**  
\$2,3M

**Learning Health  
Systems and  
Next Generation  
of Researchers**  
\$34.2M

**eHealth  
and Aging**  
\$10,0M

Canadian Health Services and  
Policy Research Alliance



## Making an Impact:

A shared framework for assessing the  
impact of health services and policy  
research on decision-making

PREPARED BY THE IMPACT ANALYSIS WORKING GROUP OF THE CANADIAN HEALTH  
SERVICES AND POLICY RESEARCH ALLIANCE (IHSPRA)  
AUGUST 2018

**IHSPR Mandate**  
\$3.5M

**Health System  
Funding, Financing,  
Sustainability**  
\$4.0M





# IHSPR has Strong Links to SPOR

**SPOR Vision: By 2025, Canada will have demonstrably improved health outcomes and enhanced the care experience for patients through the integration of evidence at all levels of the health care system**

## 1. Primary and Integrated Health Care Network (PIHCI)

Network of networks with a goal to foster a new alliance between research, policy and practice to create dynamic and responsive learning systems across the country that develop, evaluate and scale up new approaches to the delivery of horizontally and vertically integrated services within and across sectors of health care sector

## 2. Rewarding Success Initiative

Incentivizing frugal innovations and process transformations that improve outcomes and value for our investment in healthcare by rewarding the multi-disciplinary research team for strong partnership and effective and efficient implementation

## 3. National Data Platform

The National Data Platform will:

- address major barriers and inefficiencies in accessing or using multi-jurisdictional/ national data for patient-oriented research that cannot be addressed by the individual provincial and territorial SUPPORT Units;
- leverage unique Canadian assets enabling international leadership in patient-oriented research;
- be pan-Canadian in scope

## 4. Working Groups

- Co-lead of CIHR's SPOR Working Group
- CIHR SUPPORT Unit Champion
- Co-Chair of the SUPPORT Unit Council
- Co-Chair of the SUPPORT Unit Data Working Group
- Observer on the PIHCI Leadership Council

\* SPOR = Strategy for Patient Oriented Research





## IHSPR Strategic Planning: Context and Process



# IHSPR Strategic Planning: 2020-2025

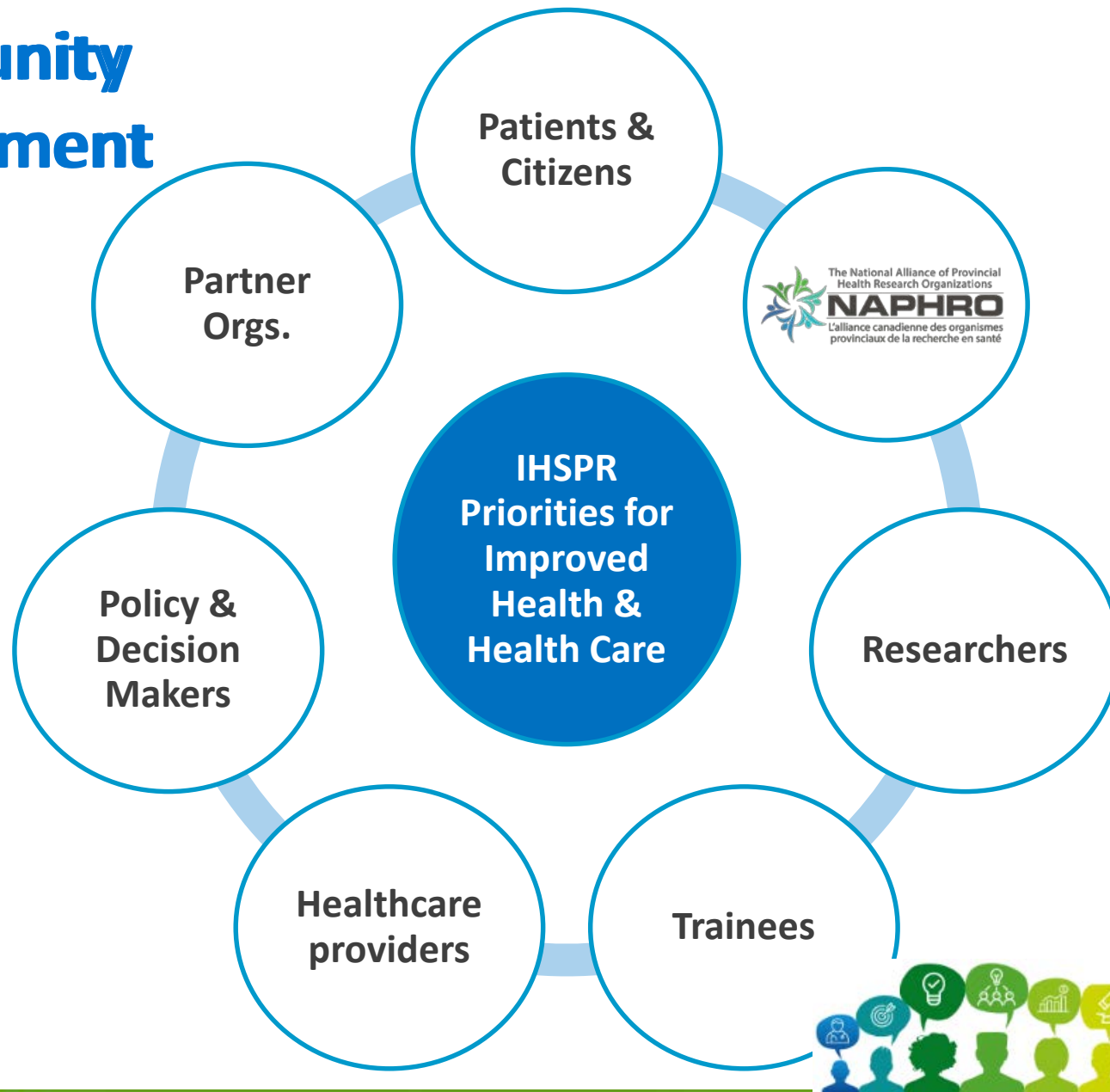


**Our goal:** Engage the community to identify **strategic directions** and **research priorities** that will support Canada's health services and policy research community to **tackle the most serious challenges** facing our health care system.





# Community Engagement





# Engagement Plan

Key  
Informant  
Interviews

Analysis &  
Draft  
Priorities

Draft  
Strategic  
Plan

Community  
Engagement:  
Webinars, Survey,  
Town Halls,  
Engagement Sessions

Validate:  
CAHSPR  
2020 &  
Web-based

Finalize &  
Launch  
IHSPR  
Strategic  
Plan

IHSPR Advisory Board Input

Fall

Winter

Spring

Summer

Fall





## IHSPR Strategic Planning: 2020-2025 Engagement Questions



# Small group discussion

1. What is the most important contribution a strong health services and policy research (HSPR) community can make in Canadian health care?
2. To optimize this contribution, what are your top three recommendations for investment in health services and policy research priorities in each of:
  - *Knowledge creation*: In what areas is new knowledge/ research most needed?
  - *Building capacity*: To best support the HSPR workforce, where is new or strengthened capacity most needed (e.g., trainees, embedded researchers, early career researchers, teams)?
  - *Knowledge translation*: How can we best support the translation and uptake of HSPR to inform health and health system improvement?
3. How and in what areas should Alberta Innovates and IHSPR work together and partner in the coming years to progress Albertan and Canadian HSPR priorities?



# Next steps

- Have additional input to share?
  - Complete our community survey and/or join as at an upcoming in-person engagement
- Help validate the resulting strategic directions and research priorities
  - Join us at CAHSPR 2020 in Saskatoon in May and/or share feedback virtually
- IHSPR will align with the CIHR strategic plan (launch: June 2020)
- Launch strategic plan in Fall 2020
- Engage with us! Let's work together to fund, conduct, and use HSPR to improve health and healthcare



**YOUR VOICE COUNTS!**

Help to shape  
**CIHR-IHSPR's**  
**2020-2025 STRATEGIC PLAN**

Complete a short online survey:  
[www.cihr-irsc.gc.ca/e/27284.html](http://www.cihr-irsc.gc.ca/e/27284.html)

 **CIHR**  
**IRSC** Institute of Health  
Services and Policy Research  
Institut des services et  
des politiques de la santé

Discoveries for life

Canada





**Thank you**

[rglazier.ihspr@ices.on.ca](mailto:rglazier.ihspr@ices.on.ca)

[mmcmahon.ihspr@ices.on.ca](mailto:mmcmahon.ihspr@ices.on.ca)

[jnadigel.ihspr@ices.on.ca](mailto:jnadigel.ihspr@ices.on.ca)